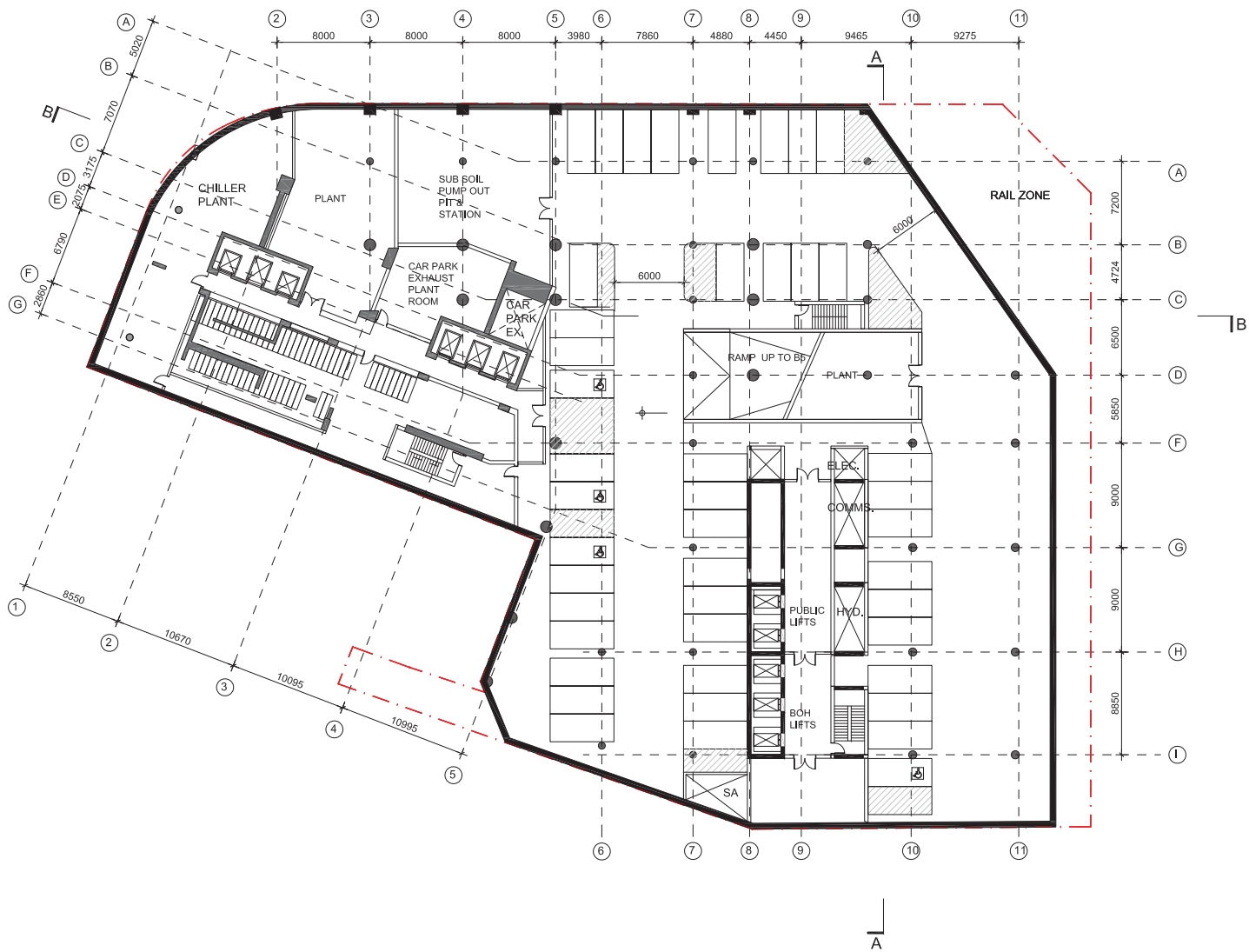


# C ————— Indicative Scheme





notes  
All dimensions and setbacks to be verified prior to commencement, omissions or discrepancies to be notified to the architect.

quality assurance system

authorised by:

date: 09.06.2015

architect  
**cronepartners**  
level 2, 364 kent street,  
sydney, nsw, 2000

client  
**万达集团**  
**WANDA GROUP**  
WANDA ONE SYDNEY  
1 Alfred Street  
Sydney, NSW, 2000

| no. | revision note                      | by. | date       |
|-----|------------------------------------|-----|------------|
| A   | PRELIMINARY ISSUE                  | SH  | 12.08.2015 |
| B   | ISSUE FOR CONSULTANT REVIEW        | SH  | 16.08.2015 |
| C   | INDICATIVE PLANS FOR DA SUBMISSION | SH  | 22.08.2015 |

client  
WANDA ONE SYDNEY PTY LTD  
level 19, 1 Alfred St, Sydney, NSW, 2000, Australia  
Ph: +61 2 8223 2101 Fax: 61 2 9252 4540

architect  
CRONE PARTNERS PTY LTD  
level 2, 364 Kent Street, Sydney, NSW, 2000, Australia  
Ph: +61 2 8295 5300 Fax: 61 2 8295 5301

| no. | revision note | by. | date |
|-----|---------------|-----|------|
|     |               |     |      |
|     |               |     |      |
|     |               |     |      |

structural engineer  
ROBERT BRID GROUP  
Level 11, 551 Castlereagh St,  
Sydney, NSW 2000, Australia

hydraulic  
AECOM  
Level 21, 420 George Street  
Sydney, NSW 2000, Australia

| no. | revision note | by. | date |
|-----|---------------|-----|------|
|     |               |     |      |
|     |               |     |      |
|     |               |     |      |

mechanical  
AECOM  
Level 21, 420 George Street  
Sydney, NSW 2000, Australia

electrical  
AECOM  
Level 21, 420 George Street  
Sydney, NSW 2000, Australia

| no. | revision note | by. | date |
|-----|---------------|-----|------|
|     |               |     |      |
|     |               |     |      |
|     |               |     |      |

scale  
1:200 @ A1, 1:400 @ A3

0m 2 4 6 8 10

project  
SYDNEY ONE PROJECT  
1 ALFRED STREET, 19-31 PITT STREET & 31A  
PITT STREET, SYDNEY NSW 2000

drawn: SH checked: BS date: 09.06.2015

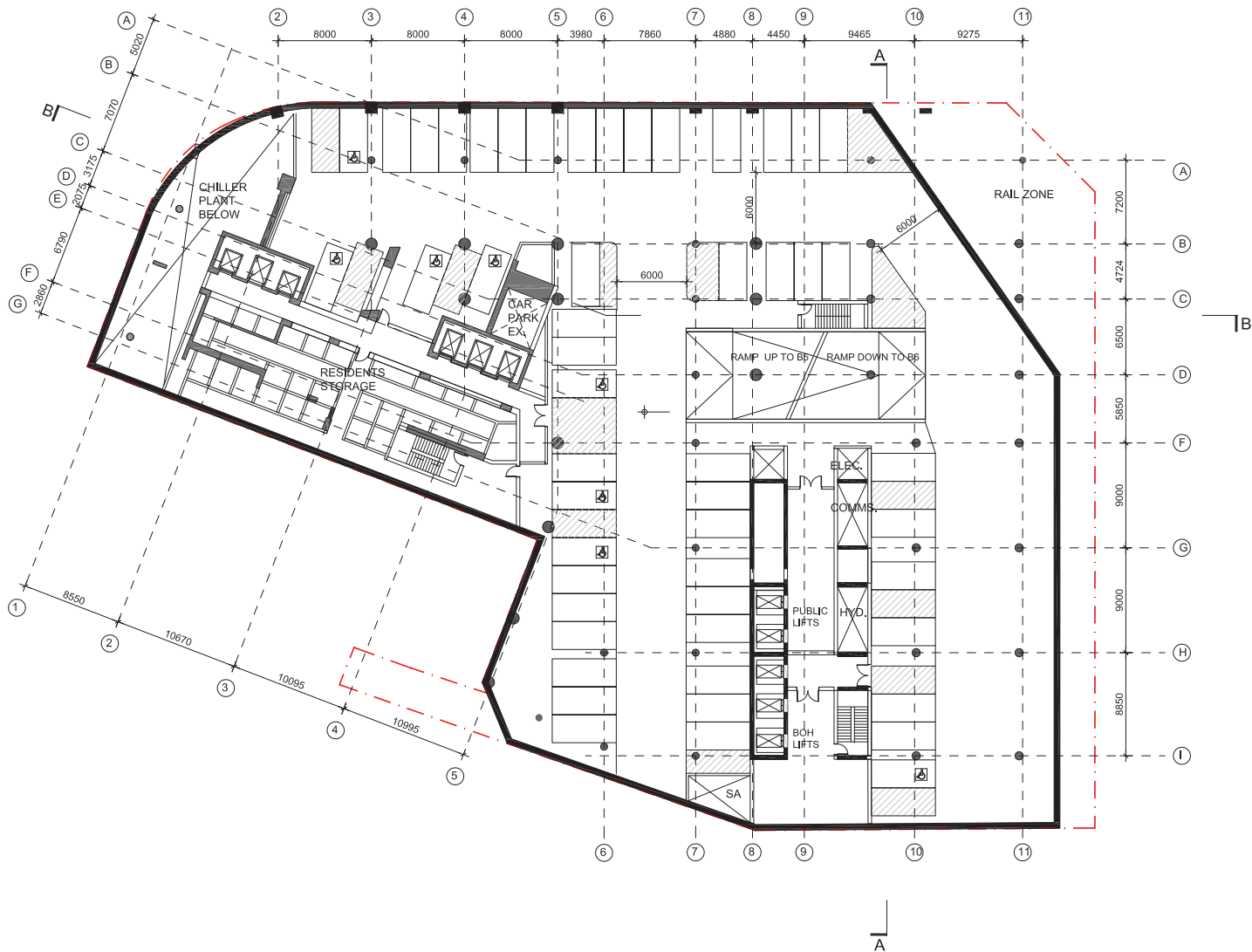
Cronepartners Pty Ltd  
level 2, 364 Kent Street,  
Sydney, NSW 2000, Australia  
Ph: +61 2 8295 5300  
Fax: 61 2 8295 5301

**cronepartners**

drawing title  
INDICATIVE DRAWING  
BASEMENT 6

DEVELOPMENT APPLICATION

|             |                |             |     |
|-------------|----------------|-------------|-----|
| CA 3054     | SK             | 00          | C   |
| project no. | drawing phase. | drawing no. | rev |



notes  
All dimensions and setbacks to be verified prior to commencement, omissions or discrepancies to be notified to the architect.

quality assurance system  
authorised by:  
date: 09.06.2015

architect  
**cronepartners**  
level 2, 364 kent street,  
sydney, nsw, 2000  
client  
**万达集团**  
**WANDA GROUP**  
WANDA ONE SYDNEY  
1 Alfred Street  
Sydney, NSW 2000

| no. | revision note                      | by. | date       |
|-----|------------------------------------|-----|------------|
| A   | PRELIMINARY ISSUE                  | SH  | 09.06.2015 |
| B   | PRELIMINARY ISSUE TO BCA           | SH  | 11.06.2015 |
| C   | ISSUE FOR CONSULTANT REVIEW        | SH  | 16.06.2015 |
| D   | INDICATIVE PLANS FOR DA SUBMISSION | SH  | 22.06.2015 |

client  
WANDA ONE SYDNEY PTY LTD  
level 19, 1 Alfred St, Sydney, NSW, 2000, Australia  
P/O: +61 2 8295 5300 Fax: +61 2 8295 5340

architect  
CRONE PARTNERS PTY LTD  
level 2, 364 Kent Street, Sydney, NSW, 2000, Australia  
P/O: +61 2 8295 5300 Fax: +61 2 8295 5301

| no. | revision note | by. | date |
|-----|---------------|-----|------|
|     |               |     |      |
|     |               |     |      |
|     |               |     |      |

structural engineer  
AECOM  
Level 21, 420 George Street  
Sydney, NSW 2000, Australia

hydraulic  
AECOM  
Level 21, 420 George Street  
Sydney, NSW 2000, Australia

| no. | revision note | by. | date |
|-----|---------------|-----|------|
|     |               |     |      |
|     |               |     |      |
|     |               |     |      |

mechanical  
AECOM  
Level 21, 420 George Street  
Sydney, NSW 2000, Australia

electrical  
AECOM  
Level 21, 420 George Street  
Sydney, NSW 2000, Australia

scale  
1:200 @ A1, 1:400 @ A3

project  
SYDNEY ONE PROJECT  
1 ALFRED STREET, 19-31 PITT STREET & 31A  
PITT STREET, SYDNEY NSW 2000

drawn: SH checked: BS date: 09.06.2015

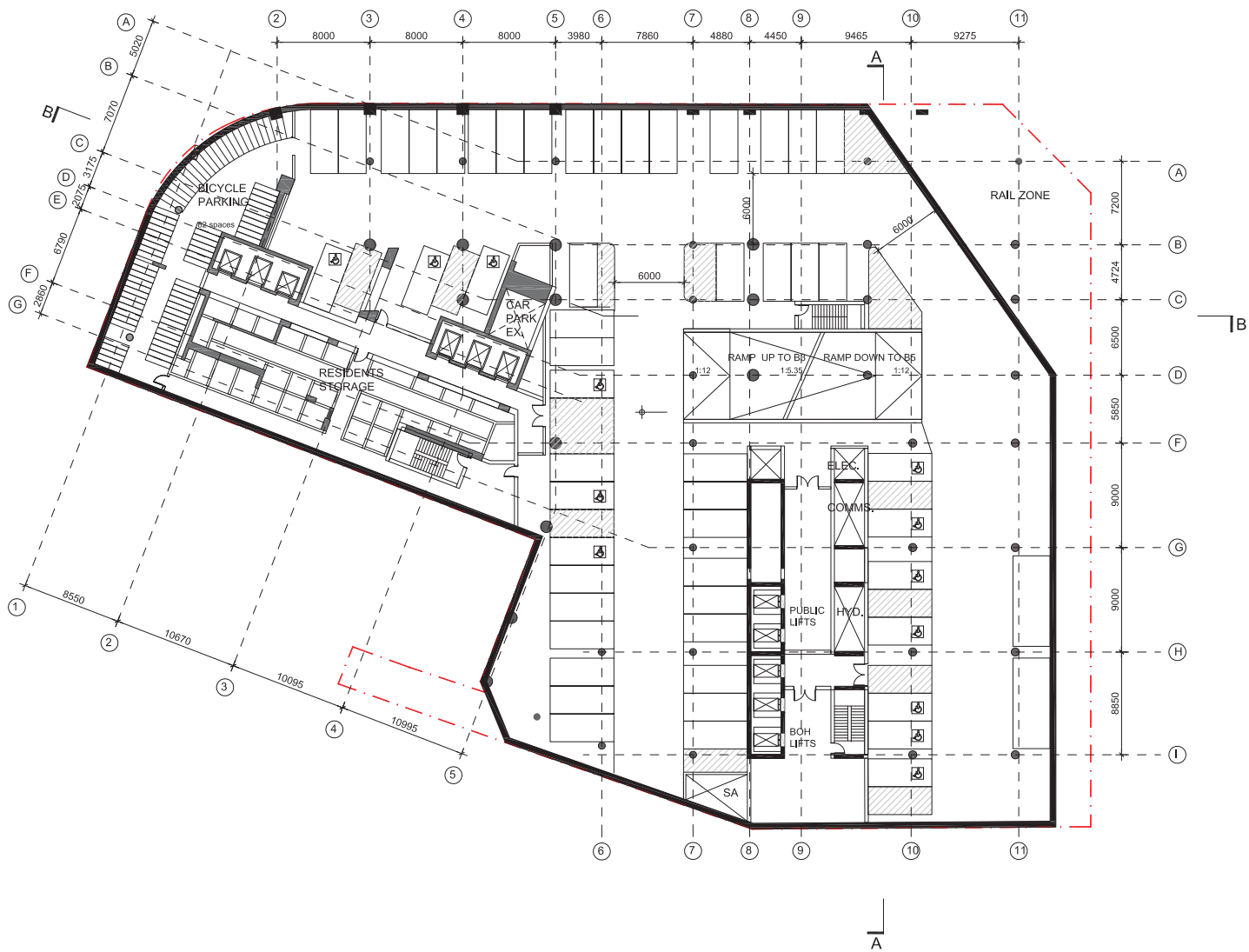
Cronepartners Pty Ltd  
level 2, 364 Kent Street,  
Sydney, NSW 2000, Australia  
P/O: +61 2 8295 5300  
Fax: +61 2 8295 5301

**cronepartners**

drawing title  
INDICATIVE DRAWING  
BASEMENT 5

DEVELOPMENT APPLICATION

|             |                |             |     |
|-------------|----------------|-------------|-----|
| CA 3054     | SK             | 01          | D   |
| project no. | drawing phase. | drawing no. | rev |



notes  
All dimensions and setbacks to be verified prior to commencement, omissions or discrepancies to be notified to the architect.

quality assurance system  
authorised by:

date: 09.06.2015

architect  
**cronepartners**

client  
**万达集团**  
**WANDA GROUP**

WANDA ONE SYDNEY  
1 Alfred Street  
Sydney, NSW 2000

| no. | revision note                      | by. | date       |
|-----|------------------------------------|-----|------------|
| A   | PRELIMINARY ISSUE                  | SH  | 09.06.2015 |
| B   | PRELIMINARY ISSUE TO BCA           | SH  | 11.06.2015 |
| C   | ISSUE FOR CONSULTANT REVIEW        | SH  | 16.06.2015 |
| D   | INDICATIVE PLANS FOR DA SUBMISSION | SH  | 22.06.2015 |

client  
WANDA ONE SYDNEY PTY LTD  
Level 19, 1 Alfred St, Sydney, NSW 2000, Australia  
Ph: +61 2 8295 5300 Fax: +61 2 8295 5340

architect  
CRONE PARTNERS PTY LTD  
Level 2, 364 Kent Street, Sydney, NSW 2000, Australia  
Ph: +61 2 8295 5300 Fax: +61 2 8295 5301

| no. | revision note | by. | date |
|-----|---------------|-----|------|
|     |               |     |      |
|     |               |     |      |
|     |               |     |      |

structural engineer  
AECOM  
Level 21, 420 George Street  
Sydney, NSW 2000, Australia

hydraulic  
AECOM  
Level 21, 420 George Street  
Sydney, NSW 2000, Australia

| no. | revision note | by. | date |
|-----|---------------|-----|------|
|     |               |     |      |
|     |               |     |      |
|     |               |     |      |

mechanical  
AECOM  
Level 21, 420 George Street  
Sydney, NSW 2000, Australia

electrical  
AECOM  
Level 21, 420 George Street  
Sydney, NSW 2000, Australia

| no. | revision note | by. | date |
|-----|---------------|-----|------|
|     |               |     |      |
|     |               |     |      |
|     |               |     |      |

scale  
1:200 @ A1, 1:400 @ A3

project  
SYDNEY ONE PROJECT  
1 ALFRED STREET, 19-31 PITT STREET & 31A  
PITT STREET, SYDNEY NSW 2000

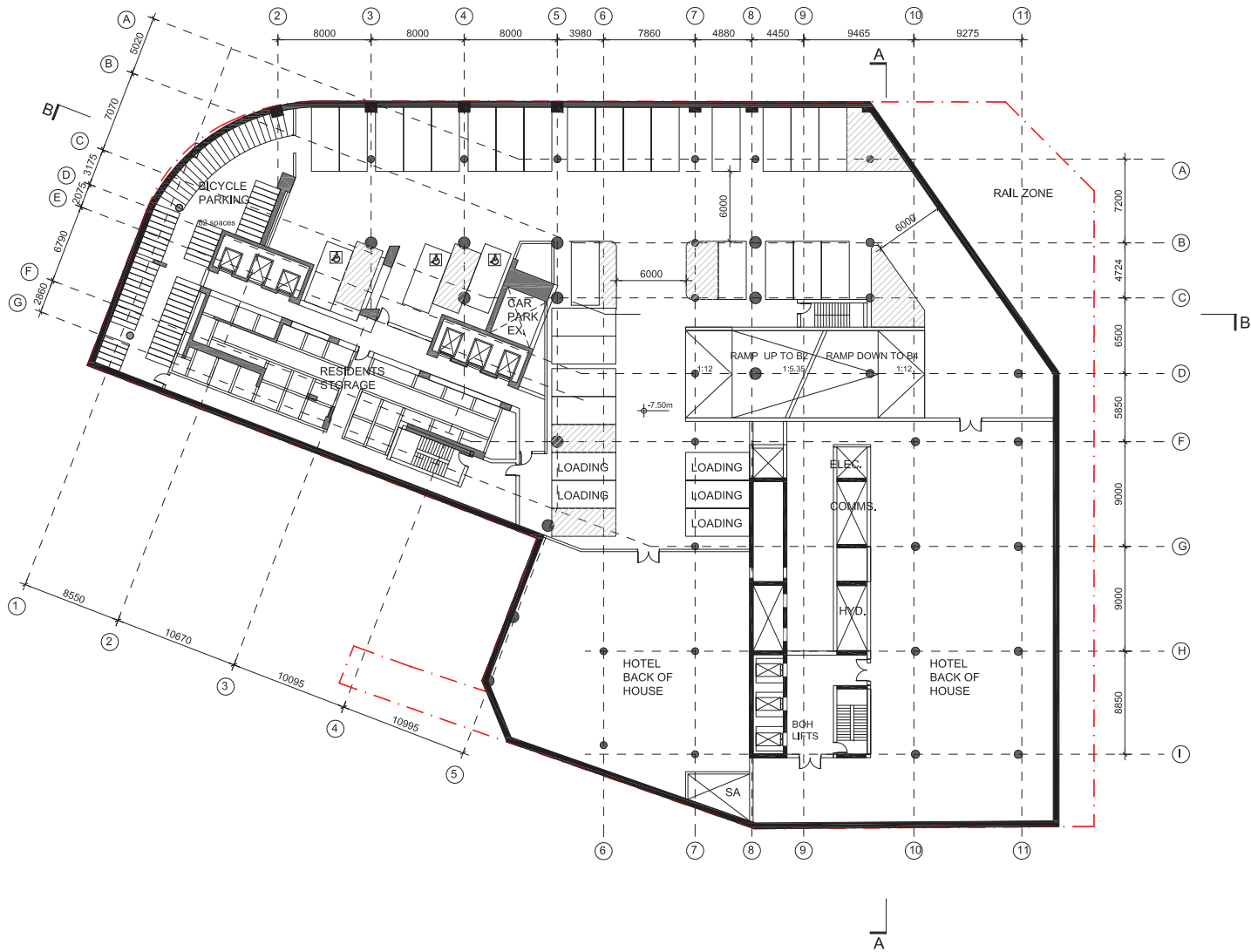
drawn: SH checked: BS date: 09.06.2015

drawing title  
INDICATIVE DRAWING  
BASEMENT 4

DEVELOPMENT APPLICATION

|             |                |             |     |
|-------------|----------------|-------------|-----|
| CA 3054     | SK             | 02          | D   |
| project no. | drawing phase. | drawing no. | rev |





notes  
All dimensions and setbacks to be verified prior to commencement, omissions or discrepancies to be notified to the architect.

quality assurance system

authorised by:

date: 09.06.2015

architect  
**cronepartners**  
level 2, 364 kent street,  
sydney, nsw, 2000

client  
**万达集团**  
**WANDA GROUP**  
WANDA ONE SYDNEY  
1 Alfred Street  
Sydney, NSW, 2000

| no. | revision note                      | by. | date       |
|-----|------------------------------------|-----|------------|
| A   | PRELIMINARY ISSUE                  | SH  | 09.06.2015 |
| B   | PRELIMINARY ISSUE TO BCA           | SH  | 11.06.2015 |
| C   | ISSUE FOR CONSULTANT REVIEW        | SH  | 16.06.2016 |
| D   | INDICATIVE PLANS FOR DA SUBMISSION | SH  | 22.06.2015 |

client  
WANDA ONE SYDNEY PTY LTD  
level 19, 1 Alfred St, Sydney, NSW, 2000, Australia  
Ph: +61 2 8295 5300 Fax: +61 2 8295 5340

architect  
CRONE PARTNERS PTY LTD  
level 2, 364 kent street, Sydney, NSW, 2000, Australia  
Ph: +61 2 8295 5300 Fax: +61 2 8295 5301

| no. | revision note | by. | date |
|-----|---------------|-----|------|
|     |               |     |      |
|     |               |     |      |
|     |               |     |      |

structural engineer  
AECOM  
Level 21, 420 George Street  
Sydney, NSW, 2000, Australia

hydraulic  
AECOM  
Level 21, 420 George Street  
Sydney, NSW, 2000, Australia

| no. | revision note | by. | date |
|-----|---------------|-----|------|
|     |               |     |      |
|     |               |     |      |
|     |               |     |      |

mechanical  
AECOM  
Level 21, 420 George Street  
Sydney, NSW, 2000, Australia

electrical  
AECOM  
Level 21, 420 George Street  
Sydney, NSW, 2000, Australia

| no. | revision note | by. | date |
|-----|---------------|-----|------|
|     |               |     |      |
|     |               |     |      |
|     |               |     |      |

scale  
1:200 @ A1, 1:400 @ A3

0m 2 4 6 8 10

project  
SYDNEY ONE PROJECT  
1 ALFRED STREET, 19-31 PITT STREET & 31A  
PITT STREET, SYDNEY NSW 2000

drawn: SH checked: BS date: 09.06.2015

Cronepartners Pty Ltd  
level 2, 364 kent street,  
sydney, nsw 2000, Australia  
Ph: +61 2 8295 5300  
Fax: +61 2 8295 5301

**cronepartners**

drawing title  
INDICATIVE DRAWING  
BASEMENT 3

DEVELOPMENT APPLICATION

|             |                |             |     |
|-------------|----------------|-------------|-----|
| CA 3054     | SK             | 03          | D   |
| project no. | drawing phase. | drawing no. | rev |