

COLORBOND® STEEL COLOURS FOR BUILDING PROFESSIONALS

ROOFING AND WALLING SYSTEMS

Colorbond®

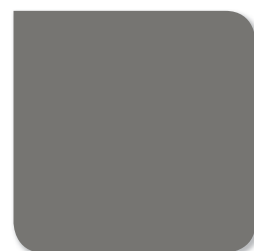
COL OURS



SURFMIST®
SA = 0.32. BCA = L



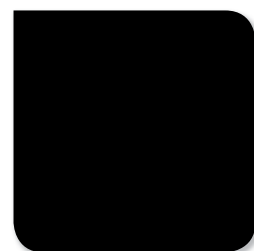
COVE™
SA = 0.54. BCA = M



WALLABY®
SA = 0.64. BCA = D



WOODLAND GREY®
SA = 0.71. BCA = D



NIGHT SKY®
SA = 0.96. BCA = D

COLORBOND® STEEL

COLOURS FOR BUILDING PROFESSIONALS

WITH A WIDE RANGE OF COLOURS AND FINISHES, COLORBOND® STEEL IS THE IDEAL SOLUTION FOR ROOFING AND WALLING SYSTEMS THAT DEMAND DESIGN FLEXIBILITY AND THERMAL EFFICIENCY. YOU'RE FREE TO CREATE WITH CONFIDENCE KNOWING COLORBOND® STEEL HAS BEEN CREATED WITH WARRANTY, COMPLIANCE AND SUSTAINABILITY IN MIND, FOR BOTH INTERIOR AND EXTERIOR APPLICATIONS.

COLORBOND®

Metallic steel range¹

NEW



GALACTIC™

SA = 0.34. BCA = L



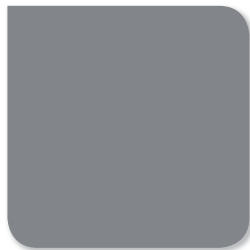
COSMIC™

SA = 0.39. BCA = L



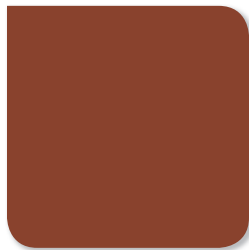
RHEA™

SA = 0.49. BCA = M



ASTRO™

SA = 0.62. BCA = D



ARIES™

SA = 0.70. BCA = D



CELESTIAN™

SA = 0.93. BCA = D

COLORBOND®

Coolmax® steel¹



WHITEHAVEN®

SA = 0.23. BCA = L

Whitehaven® has the lowest solar absorptance value in the COLORBOND® steel range.

COLORBOND® steel custom colours

Should you require a colour not shown in the COLORBOND® steel colour range, custom colours are available. Please speak to your supplier regarding availability.

LEGEND

SA = Solar Absorptance. The classification of colours in the BCA is based on solar absorptance, which is the inverse of solar reflectance, expressed as a ratio between 0 and 1. A SA value of 0 indicates that a roof absorbs none and a value of 1 indicates that a roof absorbs 100% of the incoming solar radiation. The solar absorptance values shown are not applicable for COLORBOND® Stainless steel. See the individual colour swatches for the SA value for each product and colour.

BCA = The Building Code of Australia (BCA) has classified roof colour on the basis of their solar absorptance, referred herein as Light (L < 0.40), Medium (M < 0.60), Dark (D > 0.60). See the individual colour swatches for the ratings available for each product and colour. BCA classification is correct at the time of printing but may be subject to change. Check your local state building regulations at the time of your project.

For information on the Solar Reflectance Index (SRI) visit steel.com.au/colorbond

ⓘ Also available in COLORBOND® Stainless steel for severe coastal and industrial environments.

For further technical information on products and colours and to determine the most suitable material for your project please contact your supplier or visit steel.com.au/colorbond

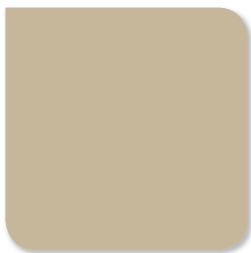
COLORBOND® steel
Standard colour range¹



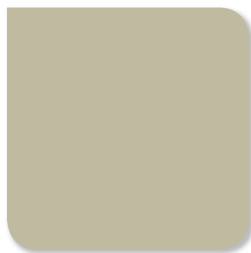
CLASSIC CREAM™
SA = 0.32. BCA = L



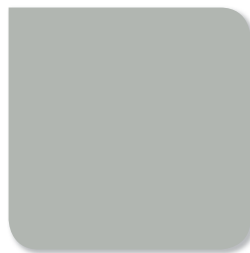
SURFMIST® ③
SA = 0.32. BCA = L



PAPERBARK®
SA = 0.42. BCA = M



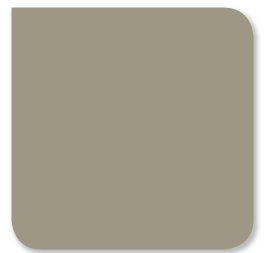
EVENING HAZE®
SA = 0.43. BCA = M



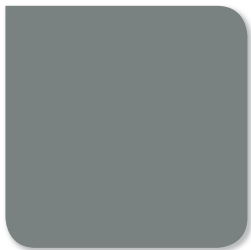
SHALE GREY™
SA = 0.43. BCA = M



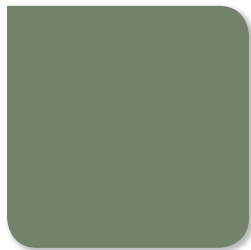
DUNE® ③
SA = 0.47. BCA = M



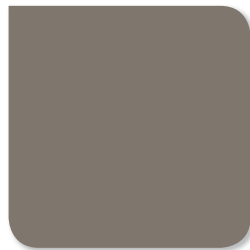
COVE™
SA = 0.54. BCA = M



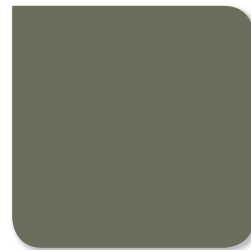
WINDSPRAY® ③
SA = 0.58. BCA = M



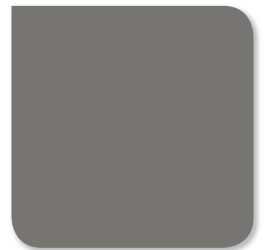
PALE EUCALYPT®
SA = 0.60. BCA = M



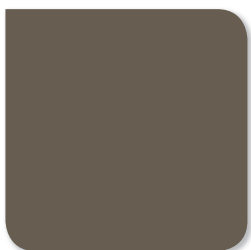
GULLY™
SA = 0.63. BCA = D



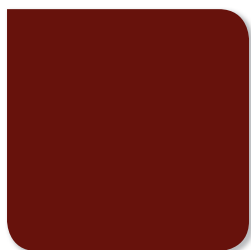
MANGROVE®
SA = 0.64. BCA = D



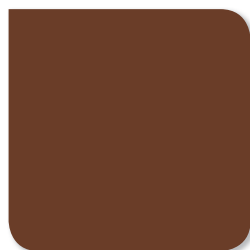
WALLABY®
SA = 0.64. BCA = D



JASPER®
SA = 0.68. BCA = D



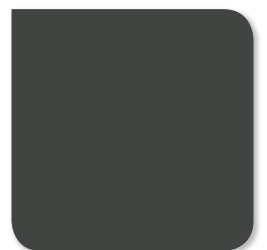
MANOR RED®
SA = 0.69. BCA = D



TERRAIN®
SA = 0.69. BCA = D



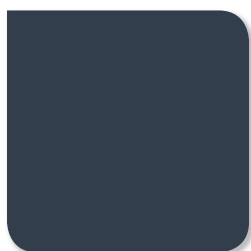
BASALT®
SA = 0.69. BCA = D



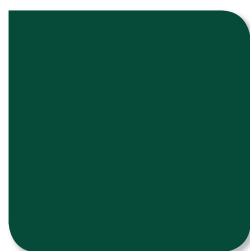
WOODLAND GREY®
SA = 0.71. BCA = D



MONUMENT®
SA = 0.73. BCA = D



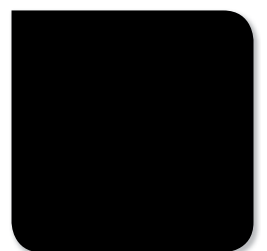
IRONSTONE®
SA = 0.74. BCA = D



COTTAGE GREEN®
SA = 0.75. BCA = D



DEEP OCEAN® ③
SA = 0.75. BCA = D



NIGHT SKY®
SA = 0.96. BCA = D

All colours in the COLORBOND® steel standard colour range are available in COLORBOND® Ultra steel for coastal and industrial environments. Please speak to your supplier for more information regarding availability.

COLORBOND® STEEL COLOURS FOR BUILDING PROFESSIONALS

Colorbond®

WITH A WIDE RANGE OF COLOURS AND FINISHES, INCLUDING SIX STRIKING METALLICS AND COLORBOND® COOLMAX® STEEL, YOU HAVE A CONTEMPORARY PALETTE TO COMPLEMENT ANY BUILDING DESIGN.

001

THERMALLY EFFICIENT COLOURS

Standard COLORBOND® steel colours², as well as COLORBOND® Coolmax® steel, include Thermatech® technology to give you optimal thermal efficiency. Thermatech® boosts the reflectance of solar energy from surfaces, increasing internal thermal comfort especially in warmer weather. Dark colours with high solar absorbance capture heat and when used in applications like solar thermal walls may increase passive thermal comfort in cooler weather.



Roof: Shale Grey™

002

LONGER WARRANTY
COLORBOND® steel now provides a longer warranty of up to 36 years³, backed by BlueScope. Class leading paint technology together with advanced substrate technology ensures better corrosion resistance.

003

GUARANTEED COMPLIANCE

In order for any pre-painted steel to meet AS2728 and deemed to satisfy requirements of the BCA, the substrate must meet AS1397. COLORBOND® steel is guaranteed to meet both AS2728 and AS1397.



Walls: Night Sky®



Roof and walls: Dune®

004

TESTED INSIDE AND OUT
COLORBOND® steel undergoes accelerated corrosion tests in the laboratory as well as extended testing in severe Australian environments.

005

SMALLER ENVIRONMENTAL FOOTPRINT

COLORBOND® steel now has a smaller environmental footprint⁴ as a result of innovation in the metal coating substrate formulation that delivers an increased lifespan while using fewer metal resources.

FOR MATERIALS, COLOUR AND DESIGN AND SPECIFICATION TOOLS VISIT
STEEL.COM.AU/COLORBOND OR CALL 1800 064 384

TO APPLY FOR OR ACTIVATE YOUR WARRANTY³
BLUESCOPESTEEL.COM.AU/WARRANTIES

1. The COLORBOND® steel colour swatches and images shown in this brochure have been reproduced to represent actual product colours as accurately as possible. However, we recommend checking your chosen colour against an actual sample of the product before purchasing, as varying light conditions and limitations of the printing process may affect colour tones. To determine the most suitable material for your project, please contact your supplier or see steel.com.au/colorbond. 2. Excluding Night Sky®. Thermatech® is not available in COLORBOND® Stainless steel. 3. Warranty subject to application and eligibility criteria. For full terms and conditions and to determine the eligibility of your building for the warranty visit bluescopesteel.com.au/warranties or call BlueScope Steel on 1800 064 384. 4. Standard COLORBOND® steel (AM100 coating) compared to previous COLORBOND® steel (AZ150 coating), in all 18 Life Cycle Assessment (LCA) environmental impact categories when used in commercial and industrial roofing applications. The results of the LCA study are not applicable to COLORBOND® Ultra steel and COLORBOND® Stainless steel. COLORBOND®, Coolmax®, Thermatech®, BlueScope® and ® colour names are registered trademarks of BlueScope Steel Limited.™ Colour names are trade marks of BlueScope Steel Limited. © 2013 BlueScope Steel Limited ABN 16 000 011 058. All rights reserved.

