

THE UNIVERSITY OF SYDNEY  
FACULTY OF ARTS & SOCIAL SCIENCES

Prepared on behalf of  
**Lend Lease**



**LANDSCAPE DESIGN REPORT**  
For Development Application (SSD-7081)

Revision C  
June 2016

**OCULUS**

Level 1, 5 Wilson Street  
Newtown NSW 2042  
p. 02 9557 5533  
f. 02 9519 8323

## CONTENTS

SECTION A – DESIGN DESCRIPTION.....	3
1.0 Introduction.....	3
2.0 The Site .....	3
3.0 Public Domain .....	4
4.0 Access and Circulation .....	4
5.0 Landscape Spaces .....	5
5.1 Science Road .....	5
5.2 Lower Forecourt .....	5
5.3 Upper Courtyard .....	5
5.4 Parramatta Road Frontage.....	5
5.5 Level 6 Roof Terrace .....	6
5.6 Hardscape .....	6
5.7 Furniture .....	6
5.8 Planting.....	6
5.9 Lighting .....	6
5.10 Response to Wingara Mura Strategy .....	7
SECTION B - SCHEDULES .....	8
B1. Indicative Plant Schedule.....	8
B2. Indicative Materials Schedule .....	9
B3. Drawing Schedule:.....	9
SECTION C – APPENDICES.....	10
C1. Landscape DA Drawings .....	10

## SECTION A – DESIGN DESCRIPTION

### 1.0 Introduction

This report has been prepared as part of the Development Application (SSD-7081) documentation for the Faculty of Arts and Social Sciences at the University of Sydney. It describes the public domain and landscape design associated with the new building and its surrounds.

The public domain and landscape design for the Faculty of Arts and Social Sciences has been developed with reference to a number of key documents and design principles contained therein, including:

- The University of Sydney Landscape Master Plan (1993);
- Sydney University Concept Landscape Plan (2014);
- Campus Grounds Conservation Plan (2013) (GCP);
- University of Sydney Campus Improvement Plan (SSD 13\_6123);
- University of Sydney Wingara Mura Strategy (2012);
- University of Sydney Draft Wingara Mura Design Principles (2016); and
- CIS Landscape Standards (2013).

### 2.0 The Site

The site of the Faculty of Arts and Social Sciences is bounded by Parramatta Road to the north, Science Road to the south, the existing Heydon Laurence building to the east, and an existing building and cricket nets to the west. The existing R D Watt building occupies the southern part of the site fronting onto Science Road and will be retained. There is a general fall of across the site from east to west with a high point at approximately RL 35 near the north-east corner of the site and a low point of approximately RL 26 in the south-west corner of the site at Science Road.

There a number of existing trees within or adjacent to the site as identified in the Arboricultural Report prepared by TreeIQ. The most significant of these is the row of *Lophostemon confertus* (Brushbox) along Science Road which have been given a Very High Landscape Significance and which are identified in Council's Register of Significant Trees (2013). This includes trees 228-232 and 248-249 located on the north side of Science Road adjacent to the site. These trees will be retained as part of this development with the exception of tree 230 which will be removed in order to provide the new pedestrian access to the building from Science Road.

There are a number of other existing trees of lesser significance located between the R D Watt and Heydon Laurence buildings which will require to be removed as part of the development of the Faculty of Arts and Social Sciences building and associated works. There is also a group of trees in the north-west part of the site adjacent to Parramatta Road including two Port Jackson Figs and a Lillypilly which will be removed as part of other works by the University to install a new electrical kiosk and HV cable route in this vicinity.

There are also a number of items of heritage significance as noted in the GCP, namely the existing Sub Station building and associated stair off Parramatta Road. There are being removed as part of a separate approval (Ref. 3-2016 FASS Early Works Stage 2, Camperdown Campus) but will be interpreted in the new design.

### 3.0 Public Domain

The Faculty of Arts and Social Sciences occupies a key site within the University of Sydney. The Ross Street Gate to the west of the site acts as an important pedestrian and vehicle entry into the Camperdown Campus from the north. The Sydney University Concept Landscape Plan (2014) identifies opportunities to upgrade this gateway with the redevelopment of a number of adjacent sites including the Faculty of Arts and Social Sciences and the adjoining future Life Sciences Building. Collectively, there is the opportunity for the redevelopment of these sites over time to reinforce this as a key entry and gateway into the University.

Science Road forms an important visual and physical link within this part of the campus. This road, rising up from the Ross St Gate to the Great Hall and University Lawn, and lined by significant trees and buildings, forms one of the key axes and connections in the Camperdown Campus. The primary pedestrian access to the new Faculty of Arts and Social Sciences will be from Science Road, and there is the opportunity not only to provide generous and welcoming pathways but also to create a number of usable spaces adjoining the road.

The northern edge of the site interfaces with Parramatta Road. Currently, north of the Ross St Gate there is a fence and hedge to the Parramatta Road frontage. Further east, as the level difference between the Campus and the road increases, this becomes a retaining wall topped by a fence with planting on the batter behind. As part of the architectural design, it is intended to reduce the levels of this batter to the north of the building to allow more light to enter the lower levels and create a more permeable visual interface with the street.

The eastern part of the site adjoins the Heydon Laurence building. The existing vehicular access from Science Road around the west side of this building will be maintained with a change in level between here and the pedestrian pathway and upper courtyard space at level 2 of the Faculty of Arts and Social Sciences building.

Whilst the western part of the site currently adjoins existing cricket nets and a building, these are proposed to be removed and the site redeveloped for a future Life Sciences building. This will create the opportunity for enhanced pedestrian connections from the Ross St Gate and to further define the lower forecourt space located off Science Road west of the RD Watt building, which forms the main pedestrian entry to the Faculty of Arts and Social Sciences from the west.

### 4.0 Access and Circulation

The pedestrian entries to the Faculty of Arts and Social Sciences building will be from Science Road, between the existing R D Watt and future Life Sciences building at level 1, and between the existing R D Watt and Heydon Laurence buildings at level 2. A grand stair, both internal and external, will connect these levels. A new access will also be created from the rear (north) of the R D Watt building to the Faculty of Arts and Social Sciences building via the proposed new upper courtyard.

Vehicular access along Science Road will be maintained with service access to the new building provided off Science Road using the pedestrian walkway located west of the R D Watt building.

## 5.0 Landscape Spaces

### 5.1 Science Road

The landscape design aims to respect Science Road as a key visual and physical link within the Camperdown Campus. Two pedestrian access routes to the new building will be created off Science Road, one to the east between the existing RD Watt and Heydon Laurence buildings, and the other to the west of the RD Watt building. The existing Brushbox trees along Science Road (trees 228-232 and 248-249) will be retained as part of this development with the exception of tree 230 which will be removed. The existing raised planter beds defined by low sandstone walls in front of the RD Watt building will also largely be retained except where a short section is required to be removed for the eastern pedestrian accessway. West of the RD Watt building, a new forecourt space will be created off Science Road which will form not only a pedestrian entry to the Faculty of Arts and Social Sciences building but also a gathering space which will eventually be defined on three sides by the existing RD Watt, proposed FASS, and future Life Sciences buildings.

### 5.2 Lower Forecourt

The Lower Forecourt is a generous new arrival and gathering space adjacent to Science Road which will form the entry not only to the Faculty of Arts and Social Sciences but also the future proposed Life Sciences building to the west. Paved walkways will be provided to level 1 of the FASS building and along the interface with the future proposed Life Sciences building. A simple raised triangular lawn area will provide a breakout space and opportunity for occasional seating. A single line of deciduous trees will help define the space and provide shade. Another raised lawn area will be provided on the east side of the space with a seating wall on its edge creating further seating opportunities. From here, the landscape will terrace up in a series of planted terraces and retaining walls to the level of the RD Watt building.

### 5.3 Upper Courtyard

The upper courtyard sits between the existing RD Watt and proposed FASS building (at level 2). This space forms as the transition space between these two buildings and is intended to act as a gathering and meeting space. It will allow for clear pedestrian circulation to the main entry of the FASS building as well as to the new northern entry to the RD Watt building. There is the potential for outdoor café seating beneath the undercroft of the new building to activate this space. The courtyard is treated as a simple paved space with a feature tree and associated seating creating a focus within it.

The courtyard is connected to the lower forecourt space via a generous stairway which is partly internal and partly external. It is also linked to Science Road by a paved walkway which passes between the RD Watt and Heydon Laurence buildings. The change in level between this walkway and the driveway on the west side of Heydon Laurence is accommodated in a series of planted landscape terraces.

### 5.4 Parramatta Road Frontage

It is intended to reduce the levels of this batter to the north of the building to allow more light to enter the lower levels and create a more permeable visual interface with Parramatta Road. To the west towards the Ross St Gate, the existing Ficus hedge will be extended along the existing fence line. Further east, as the level difference between the Campus and the road increases, the batters between here and the new building will be planted with generally low mass planting species.

A maintenance path will be provided along the north edge of the FASS building to provide access to the plant room. An egress stair will be provided at the north east corner of the building exiting onto the driveway around the Heydon Laurence building. The existing Sub Station building which lies partly within the footprint of the new building and is being removed as part of a separate approval (Ref. 3-2016 FASS Early Works Stage 2, Camperdown Campus) will be interpreted in the landscape design by means of a corten plate highlighting its location and an information plaque.

## 5.5 Level 6 Roof Terrace

The level 6 roof terrace is located on the south-east corner of the building and will provide valuable outdoor break-out space from the seminar room and atrium, as well as views out over the campus to the south and east. The western part of the roof terrace adjoining the seminar room will be largely paved as a flexible gathering space with the ability to provide movable outdoor furniture. The eastern part of the terrace adjacent to the plant room will have a series of linked raised planters, the largest accommodating a small feature tree, and built in seating. The planting will include a significant proportion of indigenous 'edible' plant species.

## 5.6 Hardscape

The proposed hardscape treatments to public domain areas will generally follow the CIS Landscape Standards including:

- Granite flagstones to pedestrian spaces and walkways (paving type P2); and
- Asphalt Pavements to the Science Road footpaths (paving type P7).

The main staircase connecting level 1 and 2 will also be granite with stainless steel tactile indicators provided top and bottom in accordance with AS1428.1. The maintenance path along the north side of the building will be decomposed granite (paving type P6).

New walls will be class 2 insitu concrete (wall type W2) and edges to raised lawns will be corten (untreated steel edging type E3). The existing sandstone walls forming the edges to planting beds in front of the RD Watt building on Science Road will be retained with one new entry created between the RD Watt and Heydon Laurence buildings. Sandstone will be salvaged from this section of wall to be reused where the existing walls require to be extended or reinstated. Stair handrails will be freestanding stainless steel.

## 5.7 Furniture

Opportunities for new furniture within the site around the building are limited by the need to provide clear circulation routes. Custom designed seating is proposed within the upper courtyard space under the proposed feature tree. Seating walls will be provided along the main pedestrian walkways on the south and west sides of the building. Bike racks will be provided along both of the main pedestrian access paths to the building. Furniture elements such as bollards, bins and bike racks will follow the CIS Landscape Standards and will be carefully located to integrate with the overall public domain design.

## 5.8 Planting

Proposed new planting will follow the requirements noted in the CIS Landscape Standards. The main areas of new planting will be:

- Within the upper courtyard space including a deciduous feature tree and shade tolerant ground cover planting;
- Around the RD Watt building and along the interface with the Heydon Laurence building consisting of small evergreen trees for wind amelioration and low, shade-tolerant mass planting building off the existing heritage planting style in front of RD Watt;
- Raised lawn areas in the lower forecourt space west of RD Watt;
- New/replacement planting to the Parramatta Road interface consisting of an extended Ficus hedge along the existing fence line and mass planting to the batters between here and the new building; and
- A feature tree and indigenous 'edible' planting on the level 6 roof terrace.

## 5.9 Lighting

Public domain lighting will be designed to comply with relevant Australian Standards and the University of Sydney Lighting Master Plan. Overall lighting will be provided to external areas for public safety along with select feature lighting to elements such as feature trees.

## 5.10 Response to Wingara Mura Strategy

The public domain and landscape design will incorporate Aboriginal & Torres Strait Islander Culture and Story into the design as part of The University of Sydney's Wingara Mura strategy. This reflects the University's vision for inclusion of Aboriginal values, art and culture in all developments.

The landscape design aims to tell a story about the past, present and future. The site's history offers a unique opportunity to reflect the land of the past in the landscape planting and materiality while the staff and students now and in the future can provide art, words and stories to interact with the landscape as an overlay. The landscape approach will celebrate the now and then:

### **Now:**

- The work of current, future and past students and staff;
  - The work of the members of the local indigenous community;
  - Using art work or stories to generate the form in built landscape elements (i.e. seating areas); and
  - Celebrating spaces naming them with words from the Dharug (Eora) language (Gadigal).
- Key treatments are proposed to include planting palette, materiality and patterns in the landscape design.

### **Then:**

- Reference the Orphan School Creek and its tributaries in the area;
- Create a plant palette with endemic plant species; and
- Emphasise previous use of land in materiality, paths and walls etc.

Proposed treatments include landscape design forms and indigenous naming and artworks.

All detailed proposals will need to be worked through with the University of Sydney and the local indigenous community to insure its sensitive placement, durability, cultural relevance and appropriateness to this project.

## SECTION B - SCHEDULES

### B1. Indicative Plant Schedule

#### PLANT SCHEDULE - GROUND

##### TREES

Symbol	Species	Common Name	Pot Size	Height	Spread	Spacing
Er	<i>Elaeocarpus reticulatus</i>	Blueberry Ash	200L	3-5m	1m	As shown
Fr	<i>Ficus rubiginosa</i>	Port Jackson Fig	400L	3m	2m	As shown
Gb	<i>Ginkgo biloba</i>	Ginko	200L	3-5m	1.5m	As shown
Qp	<i>Quercus palustris</i>	Pin Oak	200L	3-5m	2m	As shown
TI	<i>Tristanopsis laurina</i>	Water gum	200L	3m	1.5m	As shown
Wf	<i>Waterhousia floribunda</i>	Weeping Lilly Pilly	200L	3m	1.5m	As shown

##### HEDGE

Symbol	Species	Common Name	Pot Size	Height	Spread	Spacing
Fm	<i>Ficus microcarpa</i> var <i>hillii</i>	Hills Weeping Fig	100L	2.5m	1-1.5m	1000mm

##### SHRUBS / GROUNDCOVERS

Symbol	Species	Common Name	Pot Size	Height	Spread	Spacing
Am	<i>Acanthus mollis</i>	Oyster Plant	200mm	600mm	400mm	500mm
Aj	<i>Acuba japonica</i>	Gold Dust Plant	200mm	600mm	400mm	500mm
Ai	<i>Azalea indica</i>	Pink Azalea	200mm	600mm	400mm	500mm
Bm	<i>Buxus microphylla japonica</i>	Japanese Box	200mm	600mm	400mm	500mm
Cm	<i>Clivea miniata</i>	Clivea	200mm	400mm	300mm	300mm
Cr	<i>Cycas revoluta</i>	Cycad	200mm	600mm	600mm	600mm
Cs	<i>Camelia sasanqua</i>	Camelia	300mm	1m	600mm	600mm
Cz	<i>Calathea zebrina</i>	Zebra Plant	300mm	60mm	600mm	600mm
Dc	<i>Dianella caerulea</i>	Blue flax lily	200mm	600mm	400mm	400mm
Hq	<i>Hydrangea quercifolia</i>	Hydrangea	200mm	400mm	500mm	400mm
Lm	<i>Liriope muscari</i> 'Evergreen Giant'	Lily Turf	150mm	300mm	300mm	300mm
LI	<i>Lomandra longifolia</i> 'Tanika'	Matt Rush	150mm	300mm	300mm	300mm
Ng	<i>Neomarica gracilis</i>	Walking Iris	150mm	600mm	400mm	400mm
Pa	<i>Pennisetum alopecuroides</i>	Fountain Grass	150mm	300mm	300mm	300mm
Pl	<i>Poa labillardieri</i>	Tussock Grass	150mm	300mm	300mm	300mm
Px	<i>Philodendron xanadu</i>	Xanadu Philodendron	200mm	400mm	500mm	400mm
Tj	<i>Trachelospermum jasminoides</i>	Star Jasmine	200mm	300mm	300mm	300mm
Vh	<i>Viola hederacea</i>	Native Violet	200mm	200mm	300mm	300mm

#### PLANT SCHEDULE - ROOF

##### TREES

Symbol	Species	Common Name	Pot Size	Height	Spread	Spacing
Bc	<i>Backhousia citriodora</i>	Lemon Myrtle	200L	3m	1.5m	As Shown

##### SHRUBS / GROUNDCOVERS

Symbol	Species	Common Name	Pot Size	Height	Spread	Spacing
Ca	<i>Correa alba</i>	White Correa	300mm	500mm	500mm	500mm
Cg	<i>Carpobrotus glaucescens</i>	Pig Face	300mm	300mm	300mm	300mm
Mp	<i>Myoporum parvifolium</i>	Creeping boobiala	300mm	200mm	300mm	300mm
Re	<i>Russelia equisetiformis</i>	Fountainbush	200mm	500mm	500mm	400mm
Sa	<i>Scaevola aemula</i>	Fairy fan flower	200mm	200mm	300mm	300mm

##### EDIBLE SPECIES

Symbol	Species	Common Name	Size	Height	Spread	Spacing
An	<i>Atriplex nummularia</i>	Saltbush	300mm	500mm	500mm	As Shown
Ca	<i>Citrus australasica</i>	Finger Lime	150mm	1.2m	600mm	As Shown
Tt	<i>Tetragonia tetragonioides</i>	Warrigal Greens	150mm	200mm	300mm	300mm



## B2. Indicative Materials Schedule

Element	Material
Paving to main spaces and walkways	Granite flags (P2)
Paving to Science Road footpath	Asphaltic concrete (P7)
Maintenance path	Decomposed granite (P6)
Main Staircase	Solid granite (S4)
New landscape walls	Class 2 insitu concrete with light grit blast finish (W2)
Existing stone wall reinstatement	Sandstone (W1)
Steel Edging	Corten untreated steel edging (E3)
Litter Bin	Standard litter bin (L1)
Bollards	Standard bollard (B1)
Bike racks	Standard bike rack (C1)

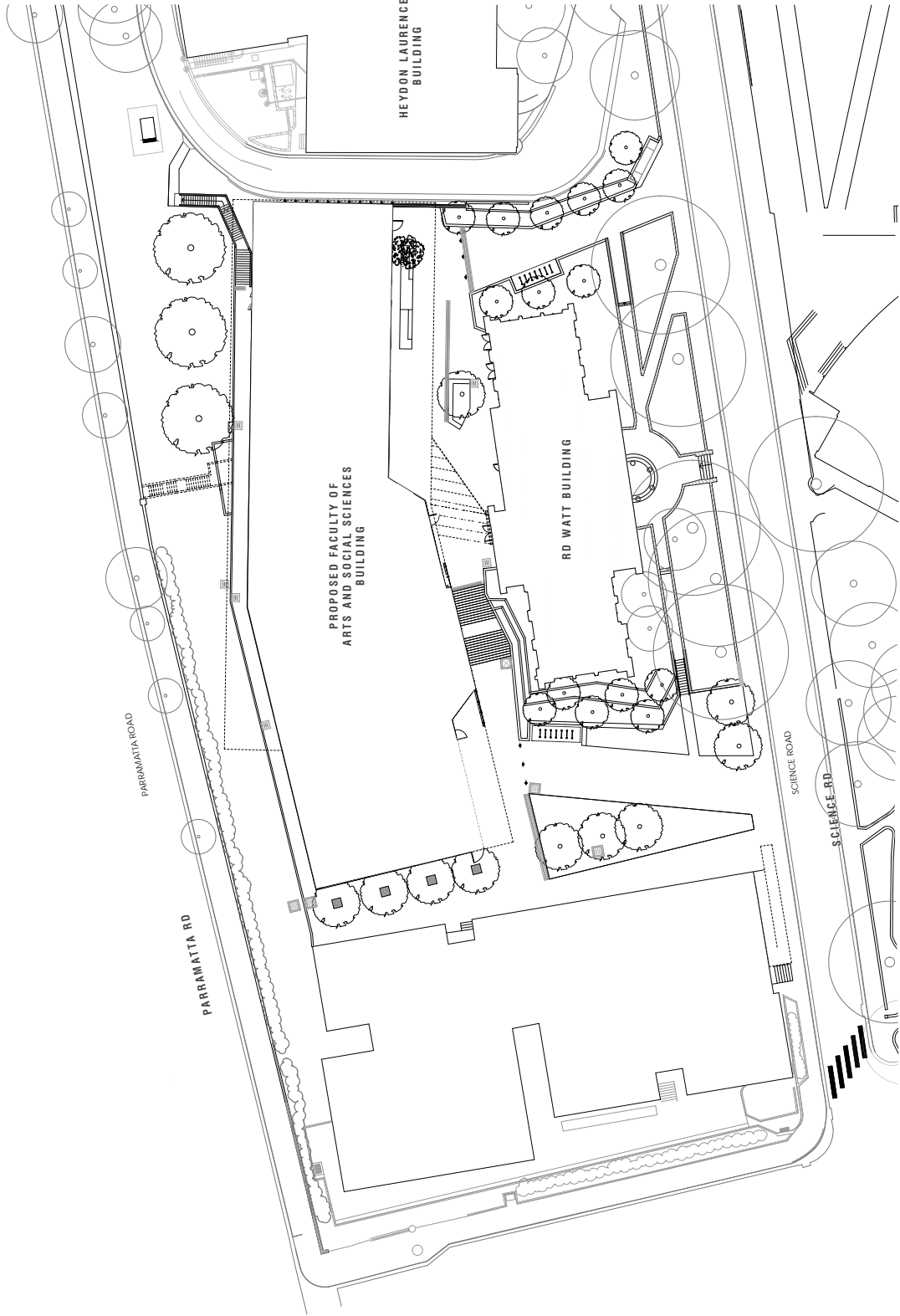
## B3. Drawing Schedule:

Drawing Number	Drawing Title
DA-L001	Landscape Cover Sheet
DA-L100	Landscape Plan - Ground
DA-L101	Tree Protection/Removal Plan
DA-L110	Landscape Finishes Plan - Ground
DA-L120	Landscape Plan – Roof
DA-L121	Landscape Finishes Plan - Roof
DA-L200	Landscape Sections - Ground
DA-L201	Landscape Sections - Ground
DA-L202	Landscape Sections - Ground
DA-L203	Landscape Sections - Ground
DA-L204	Landscape Sections - Roof
DA-L400	Planting and Material Images Sheet – Ground
DA-L401	Planting and Material Images Sheet – Roof

## **SECTION C – APPENDICES**

### **C1. Landscape DA Drawings**

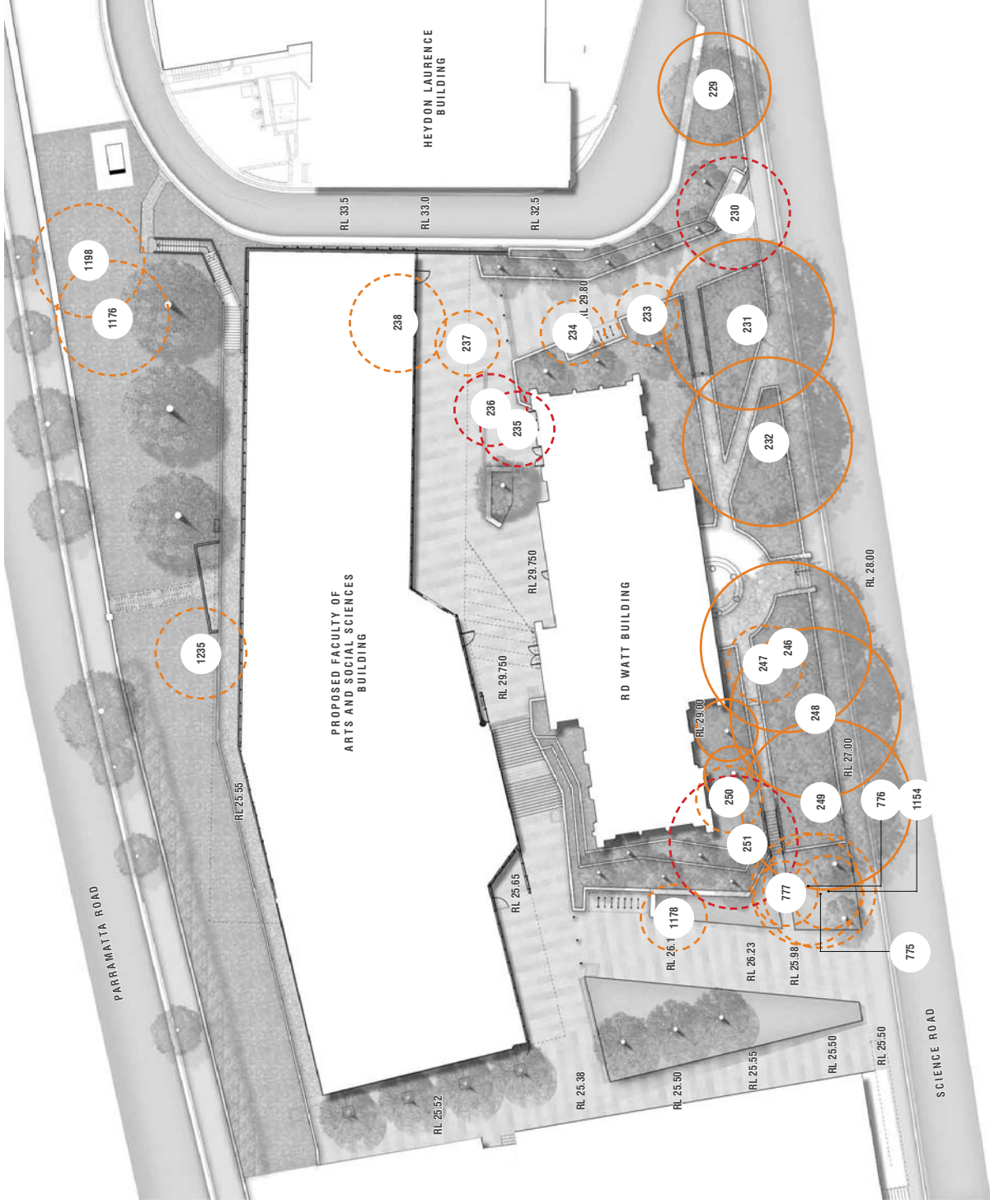
FACULTY OF ARTS AND SOCIAL SCIENCES  
UNIVERSITY OF SYDNEY  
DEVELOPMENT APPLICATION (SSD - 7081)



DRAWING SCHEDULE

DWG NUMBER	TITLE
FASS-LDA-000	COVER SHEET
FASS-LDA-100	LANDSCAPE PLAN - GROUND
FASS-LDA-101	TREE PROTECTION / REMOVAL PLAN
FASS-LDA-110	LANDSCAPE FINISHES PLAN - GROUND
FASS-LDA-120	LANDSCAPE FINISHES PLAN - ROOF
FASS-LDA-121	LANDSCAPE FINISHES PLAN - ROOF
FASS-LDA-200	LANDSCAPE SECTIONS 1
FASS-LDA-201	LANDSCAPE SECTIONS 2
FASS-LDA-202	LANDSCAPE SECTIONS 3
FASS-LDA-203	LANDSCAPE SECTIONS 4
FASS-LDA-204	LANDSCAPE SECTIONS 5
FASS-LDA-400	PLANTING AND MATERIAL IMAGES - GROUND
FASS-LDA-401	PLANTING IMAGES - ROOF & PLANTING SCHEDULES

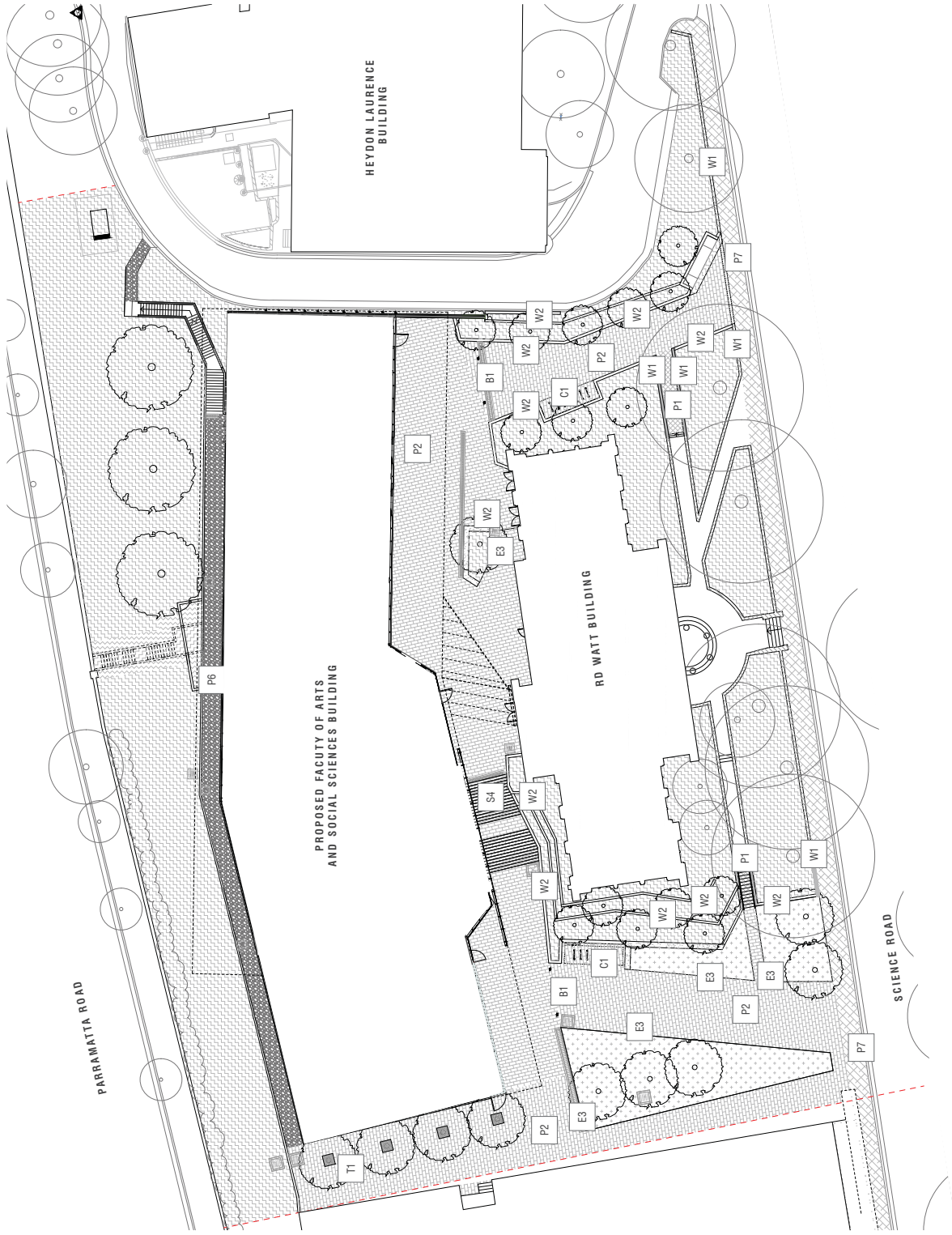


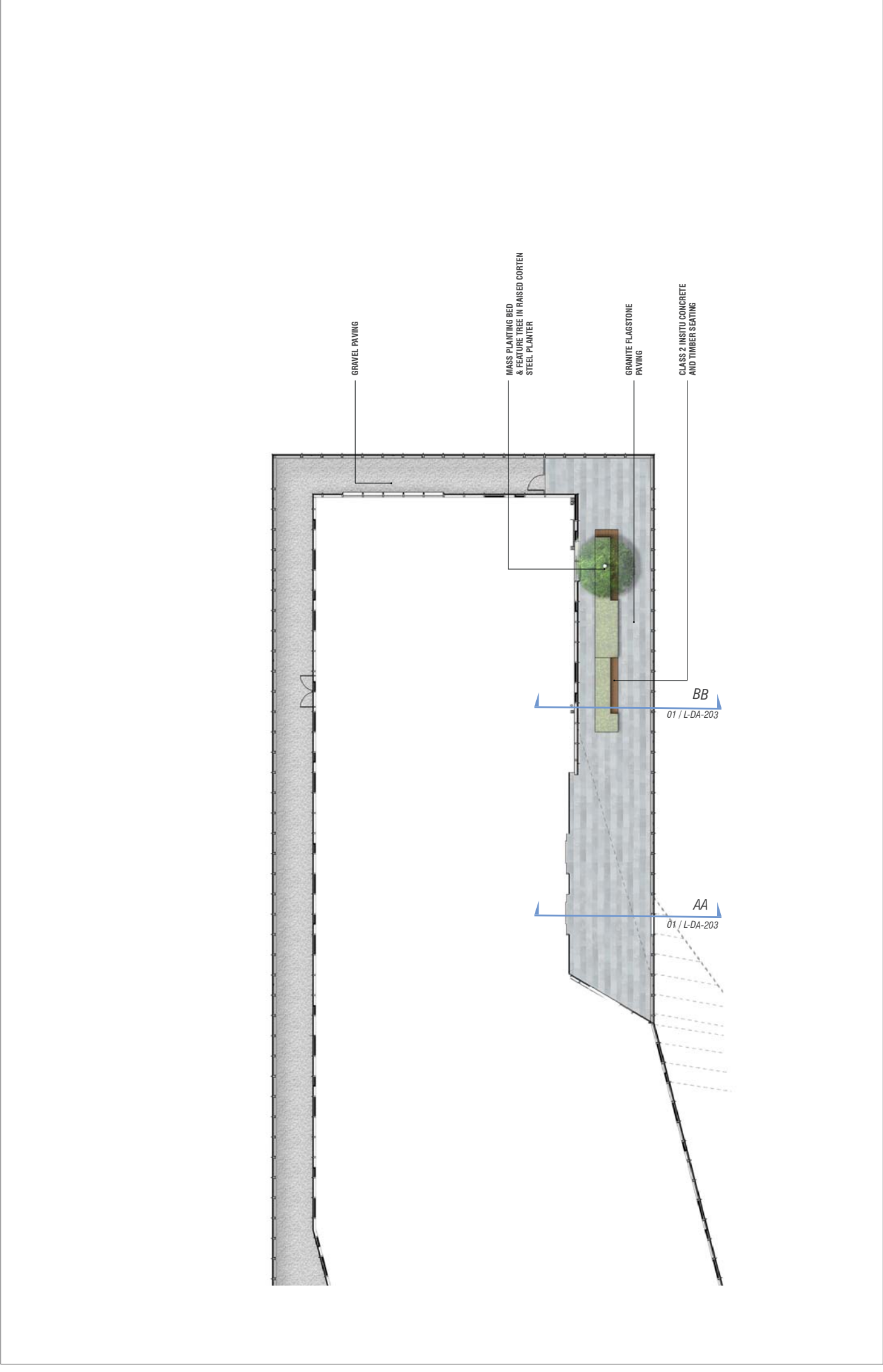


- LEGEND**
- EXISTING TREES RETAINED AND PROTECTED
  - EXISTING TREES REMOVED UNDER REF3  
-2016 -FASS EARLY WORKS STAGE 2,  
CAMPERDOWN CAMPUS
  - EXISTING TREES REMOVED UNDER SSDA

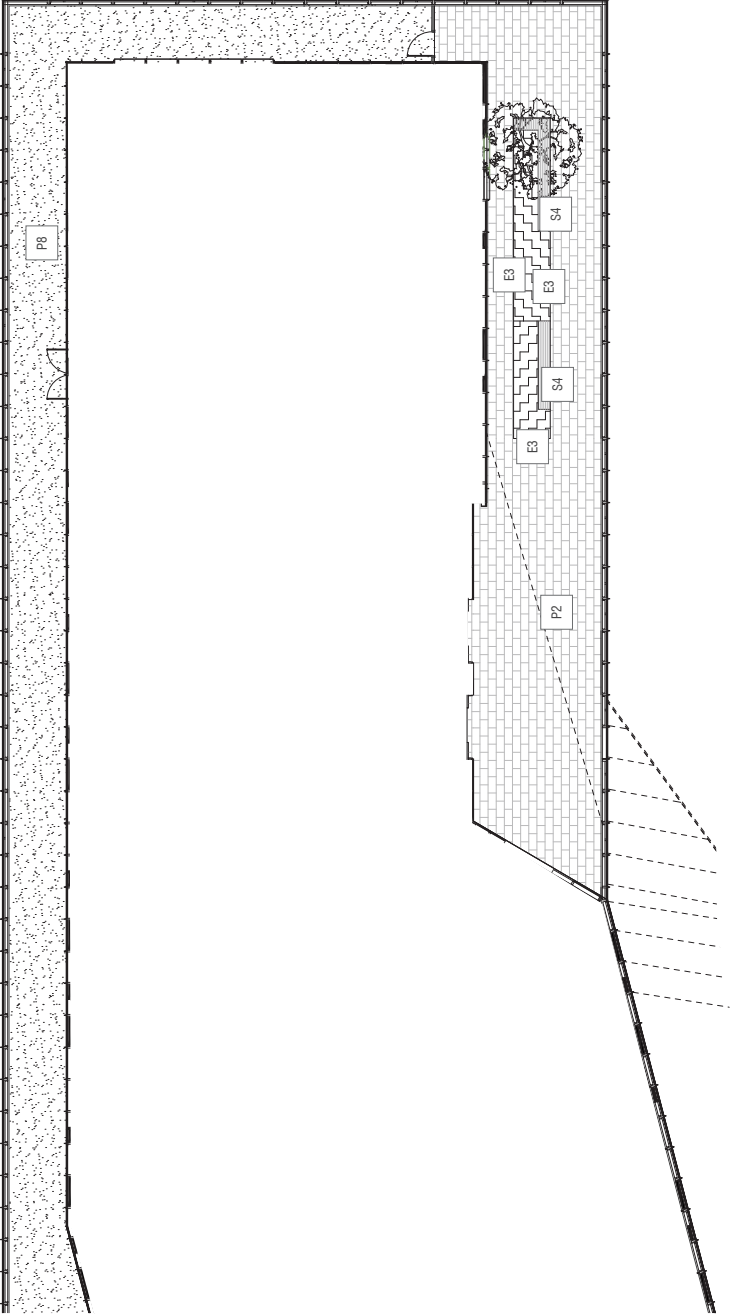
NOTE: REFER TO AIA PREPARED BY TREE IQ







REV	DATE	REASON	REV	DATE	STATUS
01	15.04.16	LANDSCAPE ARCHITECTURE	01	15.04.16	01
02	15.04.16	LANDSCAPE ARCHITECTURE	02	15.04.16	02
03	15.04.16	LANDSCAPE ARCHITECTURE	03	15.04.16	03



- MASS PLANTING
- P2 GRANITE FLAGS
- P8 GRAVEL
- E3 UNTREATED STEEL EDGING
- S4 CUSTOM SEATING STEEL AND HARDWOOD TIMBER SEAT
- PROPOSED TREE

REV	DATE	DESCRIPTION	REV	DATE	STATUS
01	10/05/16	LANDSCAPE FINISHES PLAN	01	10/05/16	REVISED
02	10/05/16	LANDSCAPE FINISHES PLAN	02	10/05/16	REVISED
03	10/05/16	LANDSCAPE FINISHES PLAN	03	10/05/16	REVISED



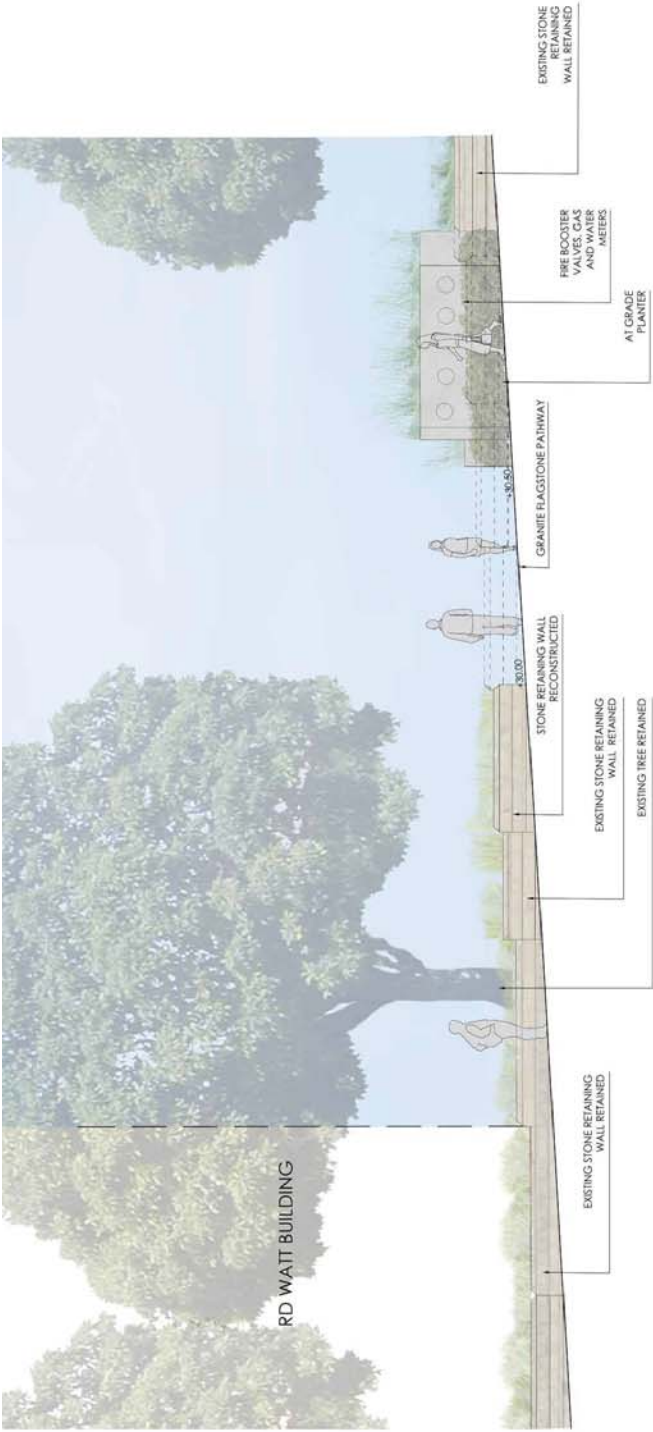


HEYDON LAURENCE  
BUILDING

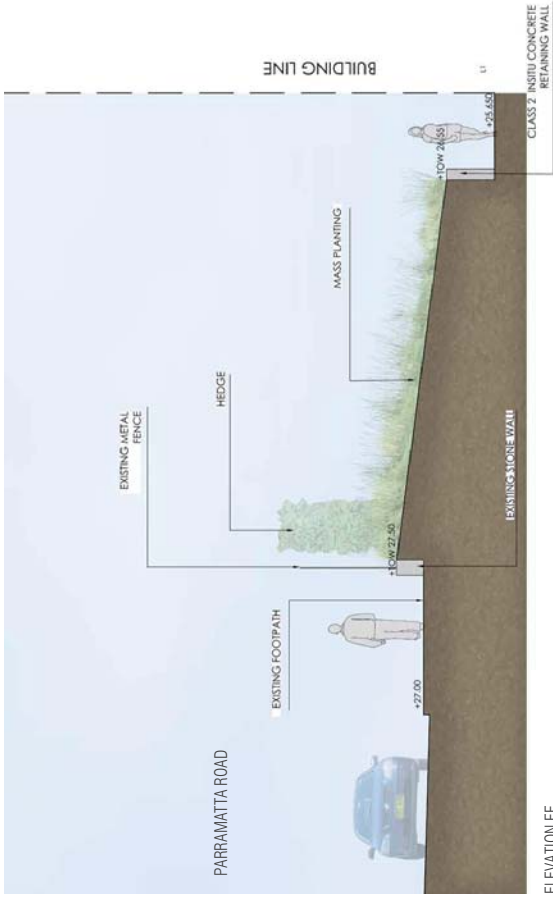


HEYDON LAURENCE  
BUILDING

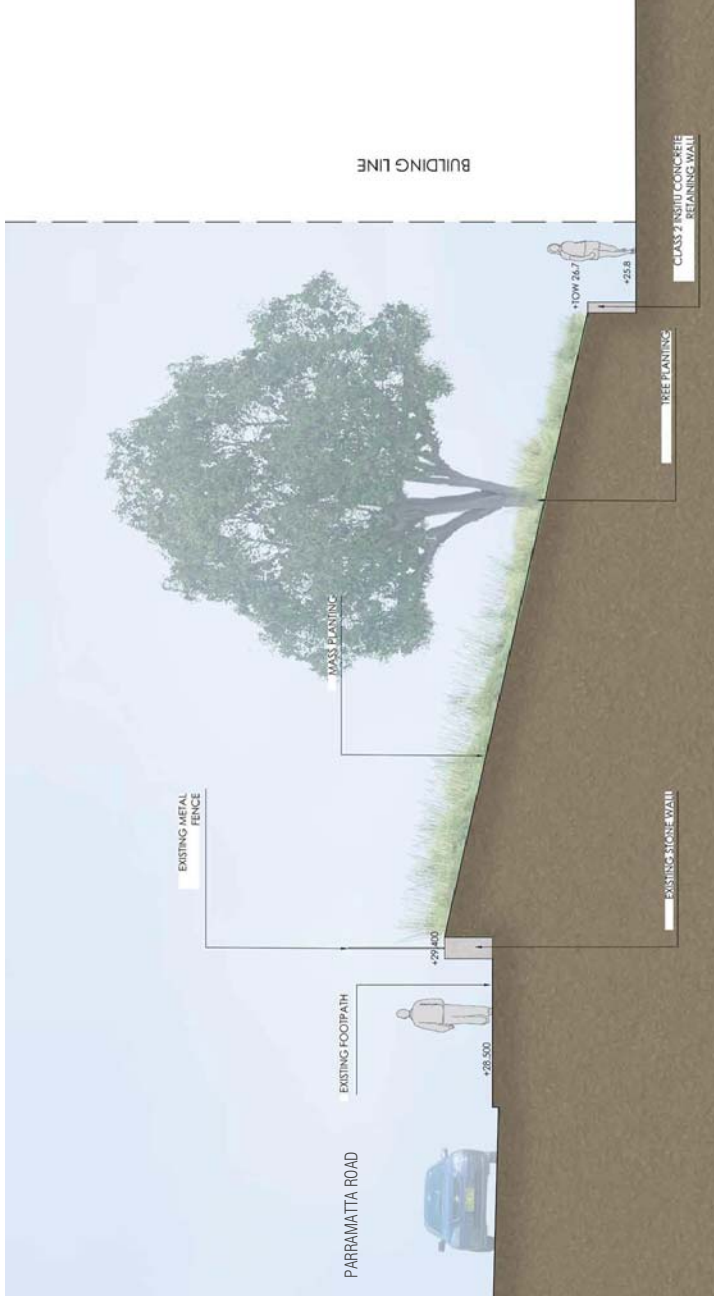




ELEVATION EE  
SCALE 1:50 @ A1



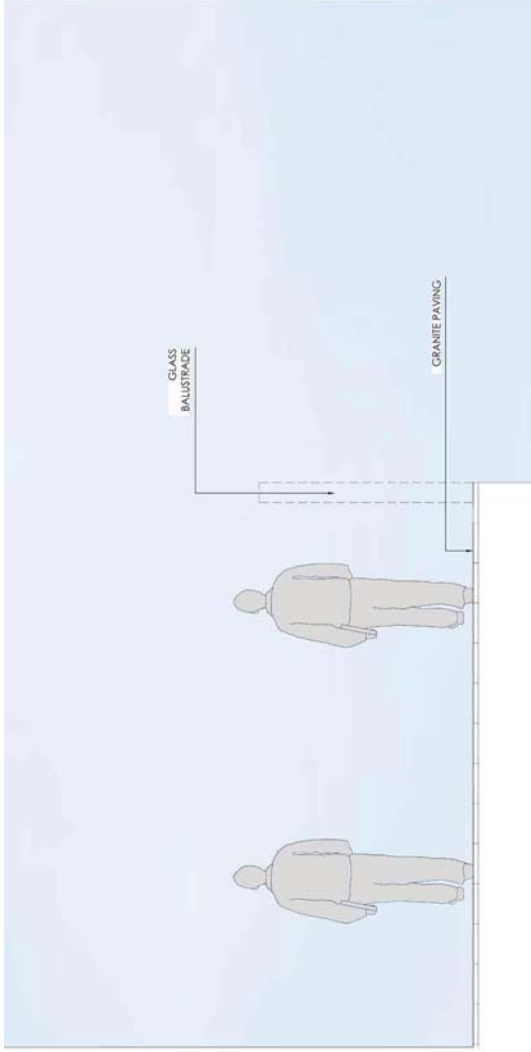
ELEVATION FF  
SCALE 1:50 @ A1



ELEVATION GG  
SCALE 1:50 @ A1

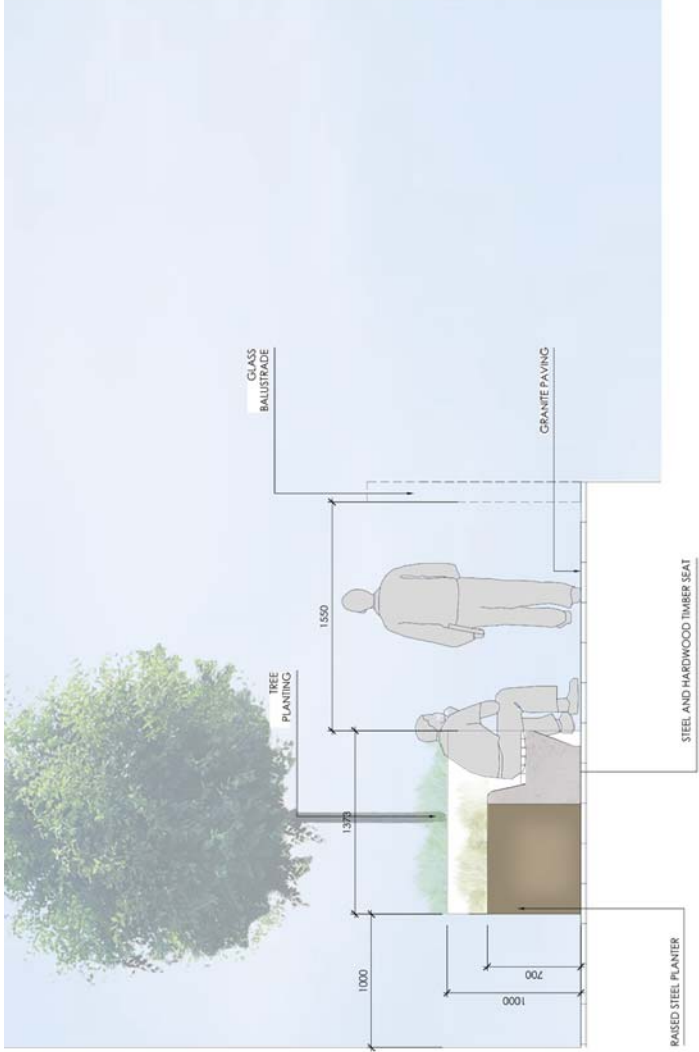
REV	DATE	REASON	BY	CHECKED	DATE	STATUS
01	10/05/16	CONCEPT APPROVAL	B			
02	10/05/16	CONCEPT APPROVAL	C			





BUILDING LINE

ELEVATION FF  
SCALE 1:50 @ A1



BUILDING LINE

ELEVATION GG  
SCALE 1:50 @ A1

REV	DATE	DESCRIPTION	BY	DATE	STATUS
01	15/06/16	LANDSCAPE ARCHITECTURE	B		
02	15/06/16	LANDSCAPE ARCHITECTURE	C		



MATERIALS



P2 - GRANITE FLAGS



P7 - ASPHALTIC CONCRETE ROAD SURFACES S4 - GRANITE STEPS



E3 - UNTREATED STEEL EDGING



W1 - CUSTOM SANDSTONE WALL



B1 - STANDARD BOLLARD



W2 - INSITU CONCRETE CUSTOM WALL



C1 UNIVERSITY STANDARD RACK T1 - TREE PIT SURROUND

TREE PLANTING - GROUND LEVEL



*Eucalyptus refulgens*



*Ficus rubiginosa*



*Ficus microcarpa var. hillii*



*Ginkgo biloba*



*Quercus palustris*



*Tristanopsis laurina*



*Weierhansia northbunda*

MASS PLANTING - GROUND LEVEL



*Acanthus mollis*



*Acaha japonica*



*Azalea indica 'Pink'*



*Buxus microphylla japonica*



*Cilea miniata*



*Cycas revoluta*



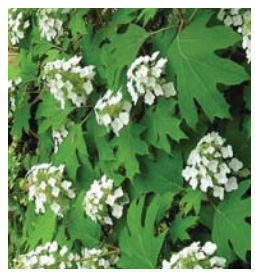
*Camellia sasanqua*



*Calathea zebrina*



*Dianella caerulea*



*Hydrangea quercifolia*



*Lirioden muscari 'Evergreen Giant'*



*Lomatia longifolia 'Banke'*



*Nonnatis gracilis*



*Pennisetum alopecuroides*



*Poa labillardieri*



*Philodendron xanadu*



*Trachelogasterum lasiocarpus*



*Viola hederaea*



