

A1

NOTES :

- * BOUNDARIES HAVE NOT BEEN DEFINED BY SURVEY AND ARE DIAGRAMMATIC ONLY.
- * LAND DIMENSIONS AND AREAS HAVE BEEN COMPILED FROM PLANS OBTAINED FROM LPMA.
- * BEARINGS RELATE TO ISG (TRUE) NORTH ORIGINATING FROM DP 809537
- * LEVEL DATUM IS AHD ORIGINATING FROM PM 46916 RL 28.577
- * VISIBLE, ACCESSIBLE SERVICES ONLY HAVE BEEN LOCATED.
- * THE EXISTENCE OF UNDERGROUND SERVICES HAS NOT BEEN INVESTIGATED. IF THESE ARE CRITICAL IT IS ESSENTIAL THE APPROPRIATE AUTHORITIES BE NOTIFIED AND THE SERVICES LOCATED BY UNDERGROUND DETECTION METHODS OR POT-HOLING AND THEN SURVEYED.
- * NEIGHBOURING HOUSES, WINDOWS AND ROOF POSITIONS ARE APPROXIMATE ONLY.
- * FLOOR LEVELS GENERALLY SURVEYED AT DOOR THRESHOLDS. INTERNAL ROOMS NOT SURVEYED.
- * CONTOURS SHOWN ARE INDICATIVE OF LAND FORM. SPOT LEVELS SHOULD TAKE PRECEDENCE.
- * REFER TO FACE OF PLAN FOR SUBJECT TITLE NOTATIONS.
- * THIS TRIANGLE IS AN INTEGRAL PART OF THIS DRAWING AND SHOULD NOT BE REMOVED

LEGEND

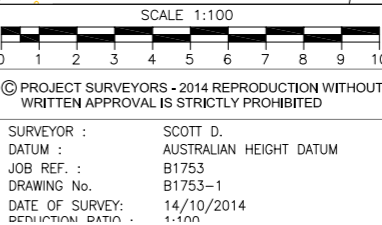
SV - STOP VALVE
HYD - HYDRANT
WM - WATER METER
SP - SIGN POST
PP - POWER POLE
ELP - ELECTRIC LIGHT POLE
PC - PRAM CROSSING
VC - VEHICLE CROSSING

L - STORMWATER LINTEL
MH - MANHOLE
SW - STORMWATER
TEL - TELSTRA PIT
SIP - SEWER INSPECTION POINT
SMH - SEWER MANHOLE



B	FINAL ISSUE	15/10/14
A	PRELIMINARY ISSUE	14/10/14
REV	AMENDMENTS	DATE

CLIENT: JPRA
PLAN OF: 175 CLEVELAND STREET REDFERN
SHOWING: GENERAL DETAIL AND SITE LEVELS
PURPOSE: ARCHITECTURAL DESIGN COUNCIL SUBMISSION
SHEET 1 OF 1



MACQUARIE PARK
PO Box 4004
MACQUARIE CENTRE NSW 2113
SUITE 404, LEVEL 4
No13-15 LYON PARK ROAD,
MACQUARIE PARK NSW 2113
PHONE : 9888 3848
FAX : 9888 3875
email: office@projectsurveyors.com.au
www.projectsurveyors.com.au



ISG COORDINATES:
CORNER 'A'
E 318 417.47
N 1248 676.77
CORNER 'B'
E 318447.74
N 1248 671.75