

Comparison between original DA submitted drawings current drawings

The following drawings provide a comparison between the originally submitted DA drawings and the current drawings, by a visual overlay.

Primarily changes comprise of:

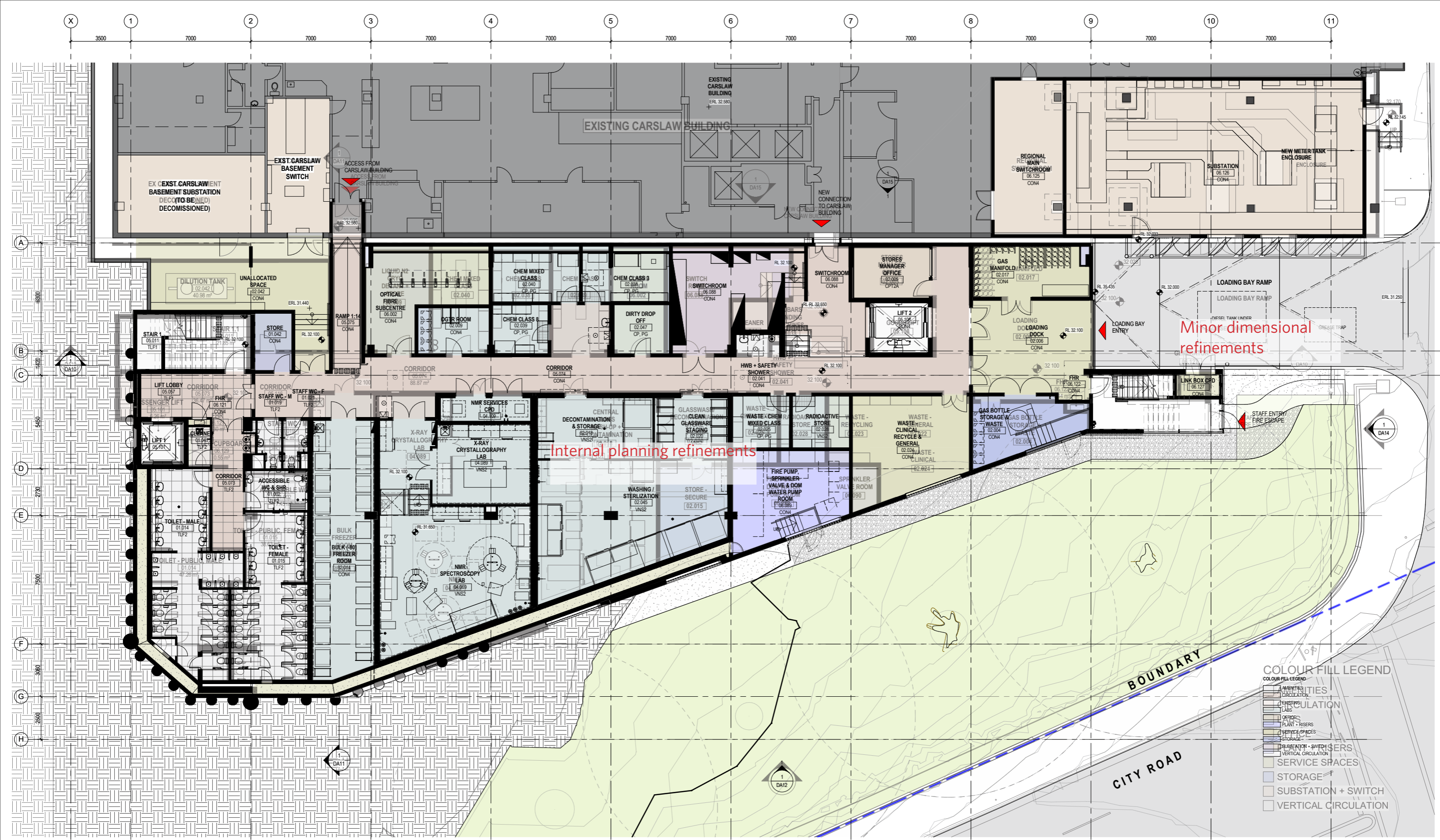
- refinements to the internal planning;
- refinement of plant layouts in level 8 effecting roof top exhaust cluster locations;
- minor dimensional adjustments to suit design development detailing.

More significant adjustments include:

- refinement of south-west corner entry structure (impacts are internal to the building) reducing the bulk of structure on this corner;
- extending width of existing external southern stairs on Level 2 to address proportion of the southern entry properly.

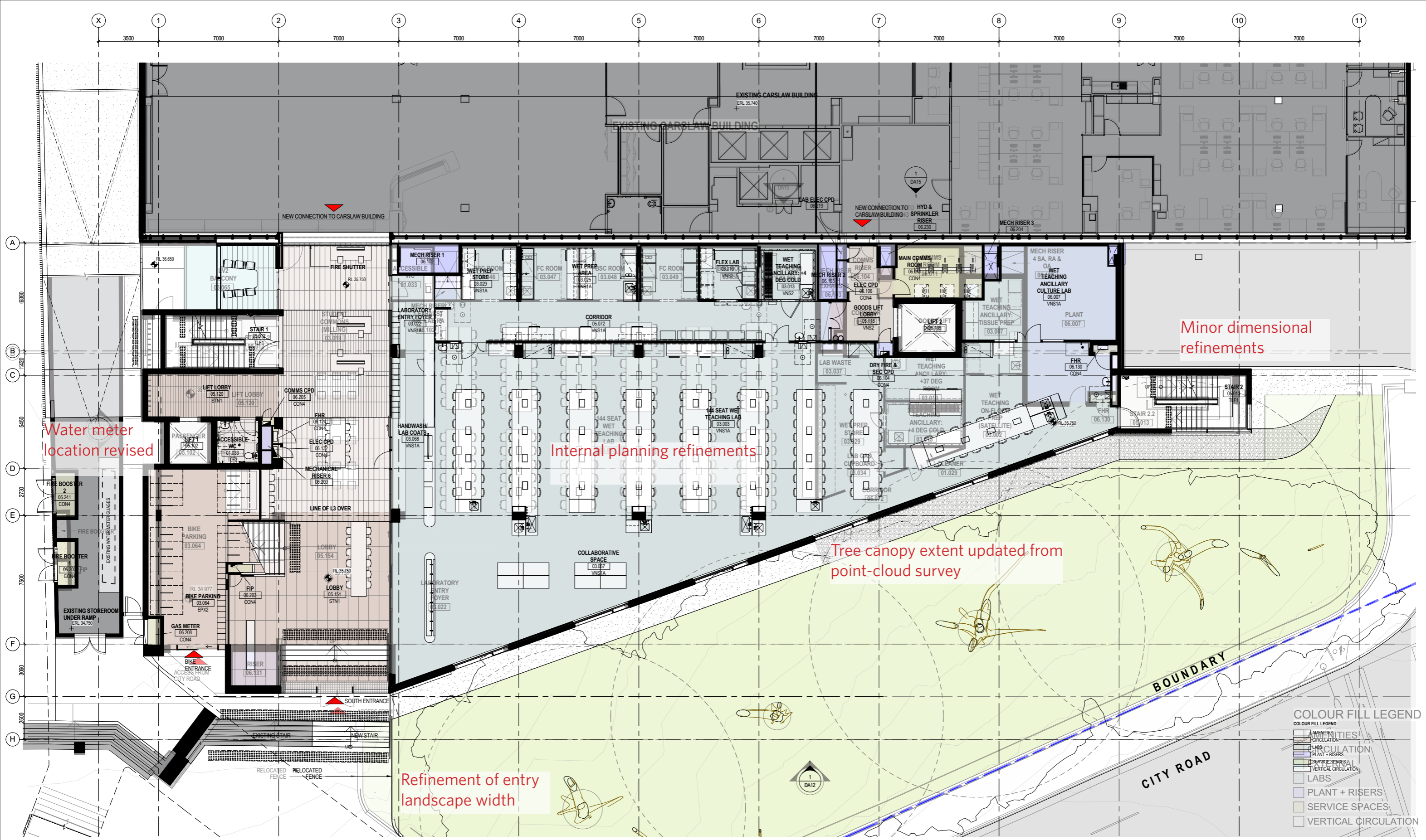
The overall dimension, heights, materials, and facade setout is consistent with the original drawings.

In addition to these drawings, updated shadow diagrams have been provided clearly articulating the shadow projected by the new building compared to existing context.



Updated DA drawing overlay behind original DA for comparison of changes

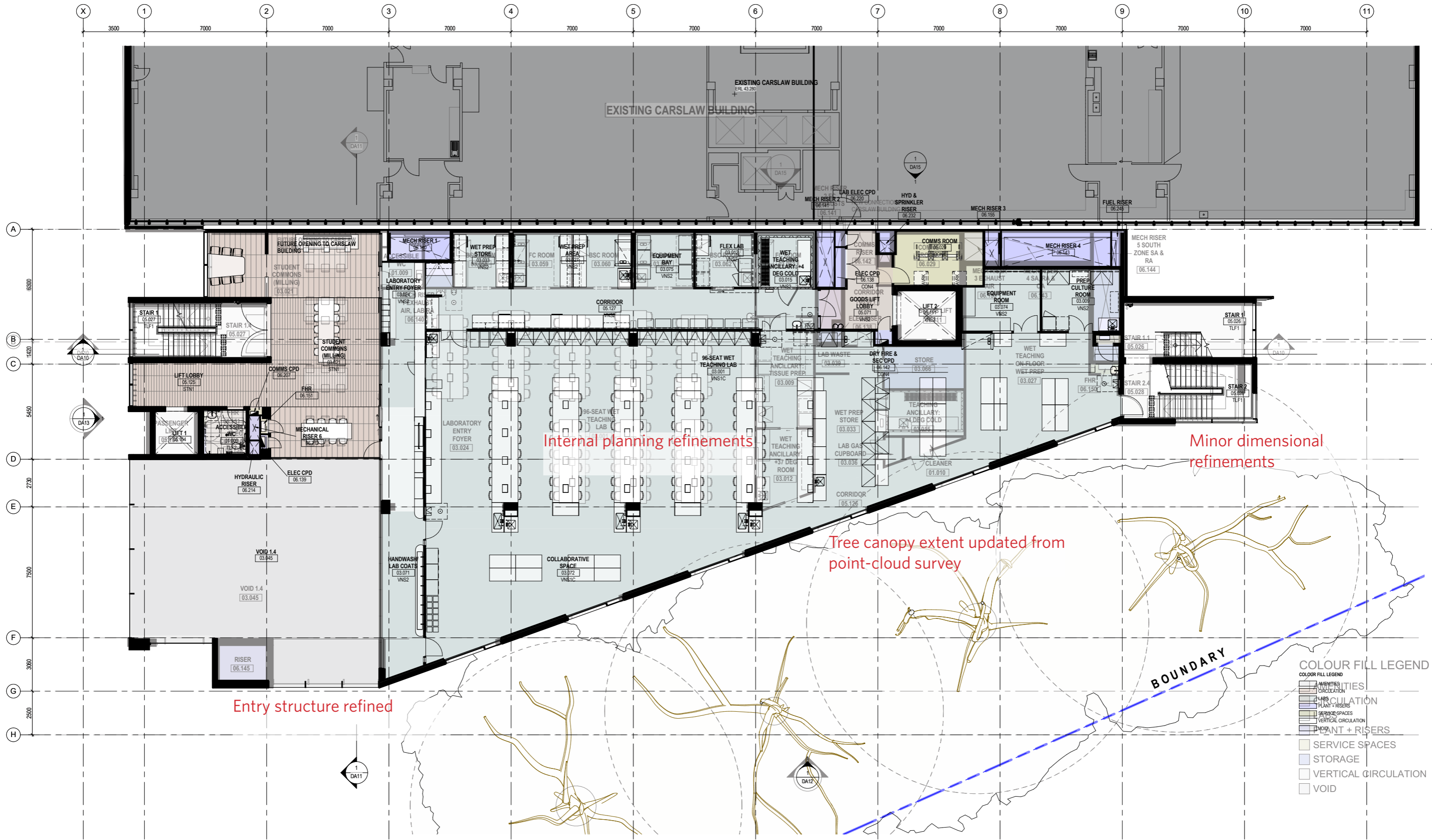
5/16/2016 11:38:11 AM G FOR INFORMATION REV DESCRIPTION OF CHANGE MS 13.09.2016 CHD DATE		CONSULTANT Access Consultant Cheung Access Code Compliance B M + G Pty Ltd Comm/Security Engineer JHA Consulting Engineers Electrical Engineer JHA Consulting Engineers	ESD Consultant JHA Consulting Engineers Facade Engineer Surface Design Consult. Pty Ltd Fire Engineer Defire Pty Limited Landscape Architects OCULUS Pty Ltd	Mechanical Engineer JHA Consulting Engineers Plumbing Engineer JHA Consulting Engineers Structural Engineer Northrop Engineers Pty Ltd	CLIENT RICHARD CROOKES CONSTRUCTIONS THE UNIVERSITY OF SYDNEY Level 1, 110 Walker Street, North Sydney NSW 2060, Australia +61 2 9956 2666 hdr@riceaubney.com hdrinc.com	ARCHITECTS RICE DAUBNEY PROJECT LEES1 BUILDING (F07) THE UNIVERSITY OF SYDNEY CITY ROAD, CAMPERDOWN PROJECT NUMBER 271821.15H	DRAWING TITLE PLAN LEVEL 01	SCALE 1:100 @ A1	CHECKED MS	DATE 13.09.2016
		CONTRACT NUMBER TBC	DRAWING NUMBER HDR-AR-DWG-DA01	ISSUE G	THIS DOCUMENT IS THE COPYRIGHT OF THE RICE DAUBNEY GROUP (NSW) PTY LTD. ALL INFORMATION ILLUSTRATED ON THIS DOCUMENT IS TO BE CHECKED AND VERIFIED ON SITE. IN THE EVENT OF DISCREPANCIES REFER TO ARCHITECT PRIOR TO COMMENCEMENT OF WORK. DO NOT SCALE DRAWINGS MANUALLY OR ELECTRONICALLY.			C:\v\2016\15H LEES1_BASE BUILDING_samh.hoang@hdrinc.com.au		



Updated DA drawing overlay behind original DA for comparison of changes

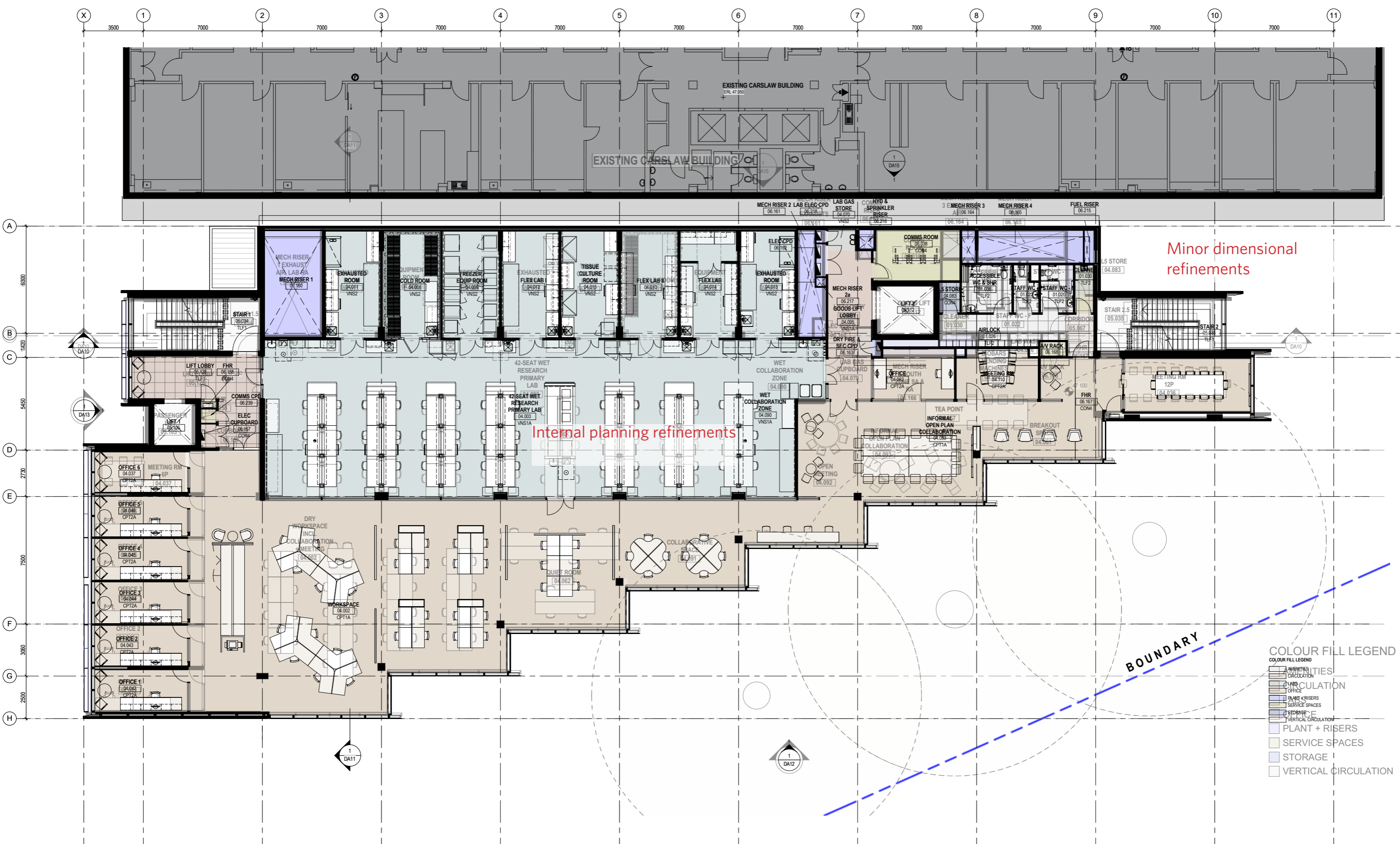
9/10/2016 11:38:32 AM FOR INFORMATION DESCRIPTION OF CHANGE MS 13.09.2016 CHD DATE	CONSULTANT Access Consultant Cheung Access Code Compliance B M + G Pty Ltd Comm/Security Engineer JHA Consulting Engineers Electrical Engineer JHA Consulting Engineers	ESD Consultant JHA Consulting Engineers Facade Engineer Surface Design Consult. Pty Ltd Fire Engineer JHA Consulting Engineers Landscape Architects OCULUS Pty Ltd	MECHANICAL ENGINEER JHA Consulting Engineers PLUMBING ENGINEER JHA Consulting Engineers STRUCTURAL ENGINEER JHA Consulting Engineers Northrop Engineers Pty Ltd	CLIENT RICHARD CROOKES CONSTRUCTIONS  THE UNIVERSITY OF SYDNEY	ARCHITECTS  RICE DAUBNEY Level 1, 110 Walker Street, North Sydney NSW 2060, Australia +61 2 9956 2666 hdr@ricedaubney.com hdrinc.com	PROJECT LEES 1 BUILDING (F07) THE UNIVERSITY OF SYDNEY CITY ROAD, CAMPERDOWN PROJECT NUMBER 271821.15H	DRAWING TITLE PLAN LEVEL 02	SCALE 1:100 @ A1	CHECKED MS	DATE 13.09.2016
								CONTRACT NUMBER TBC	DRAWING NUMBER HDR-AR-DWG-DA02	ISSUE G

THIS DOCUMENT IS THE COPYRIGHT OF THE RICE DAUBNEY GROUP (NSW) PTY LTD. ALL INFORMATION ILLUSTRATED ON THIS DOCUMENT IS TO BE CHECKED AND VERIFIED ON SITE. IN THE EVENT OF DISCREPANCIES REFER TO ARCHITECT PRIOR TO COMMENCEMENT OF THE WORK. DO NOT SCALE DRAWINGS MANUALLY OR ELECTRONICALLY.
 C:\v2016\15H LEES 1_BASE BUILDING_samh.hoony@hdrinc.com.nz



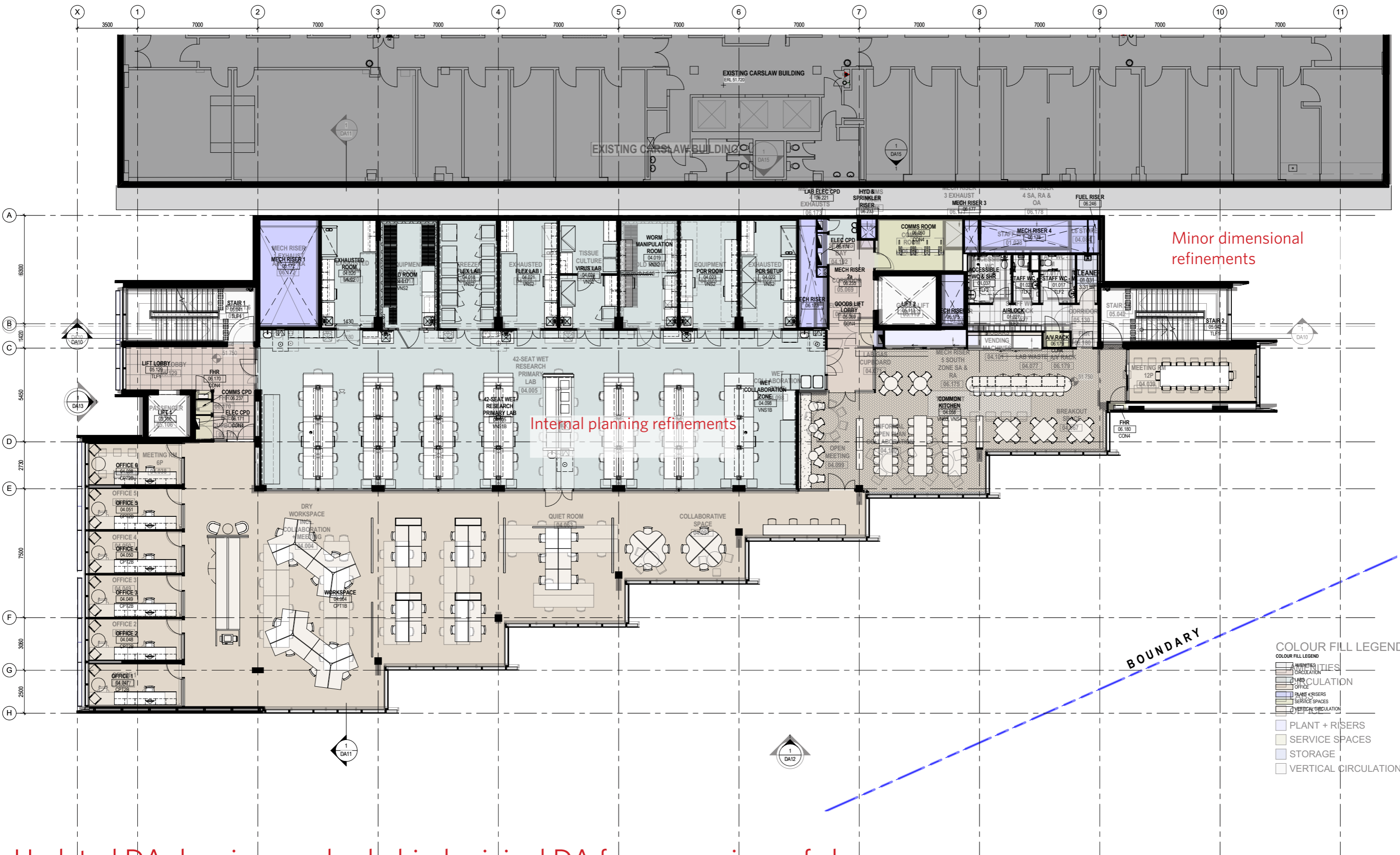
Updated DA drawing overlay behind original DA for comparison of changes

9/10/2016 11:39:28 AM FOR INFORMATION MS 13.09.2016 CHD DATE	0 1m 20m A1	CONSULTANT Access Consultant Cheung Access Code Compliance B M + G Pty Ltd Comms/Security Engineer JHA Consulting Engineers Electrical Engineer JHA Consulting Engineers	ESD Consultant JHA Consulting Engineers Facade Engineer Surface Design Consult. Pty Ltd Fire Engineer JHA Consulting Engineers Landscape Architects OCULUS Pty Ltd	MECHANICAL ENGINEER JHA Consulting Engineers PLUMBING ENGINEER JHA Consulting Engineers STRUCTURAL ENGINEER Northrop Engineers Pty Ltd	CLIENT RICHARD CROOKES CONSTRUCTIONS THE UNIVERSITY OF SYDNEY	ARCHITECTS HDR RICE DAUBNEY Level 1, 110 Walker Street, North Sydney NSW 2060, Australia +61 2 9956 2666 hdr@ricedaubney.com hdrinc.com	PROJECT LEES1 BUILDING (F07) THE UNIVERSITY OF SYDNEY CITY ROAD, CAMPERDOWN PROJECT NUMBER 271821.15H	DRAWING TITLE PLAN LEVEL 04	SCALE 1:100 @ A1	CHECKED MS	DATE 13.09.2016
									CONTRACT NUMBER TBC	DRAWING NUMBER HDR-AR-DWG-DA04	ISSUE G



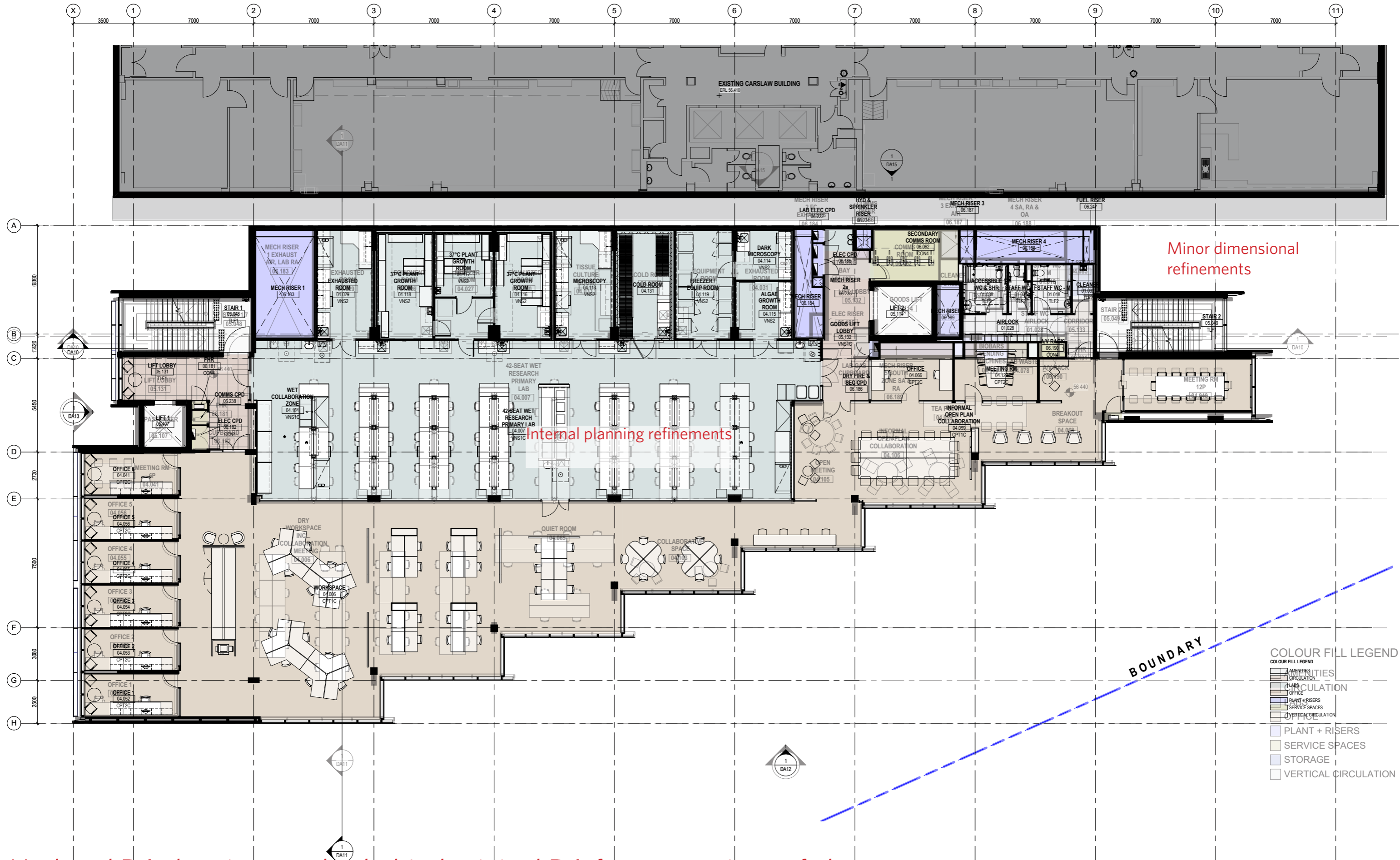
Updated DA drawing overlay behind original DA for comparison of changes

9/16/2016 11:35:33 AM FOR INFORMATION DESCRIPTION OF CHANGE MS CHD DATE 13.09.2016 0 1m 20m A1	CONSULTANT Access Consultant Cheung Access Code Compliance B M + G Pty Ltd Comms/Security Engineer JHA Consulting Engineers Electrical Engineer JHA Consulting Engineers	CONSULTANT ESD Consultant JHA Consulting Engineers Facade Engineer Surface Design Consult. Pty Ltd Fire Engineer JHA Consulting Engineers Landscape Architects OCULUS Pty Ltd	CONSULTANT Mechanical Engineer JHA Consulting Engineers Plumbing Engineer JHA Consulting Engineers Structural Engineer Northrop Engineers Pty Ltd	CLIENT RICHARD CROOKES CONSTRUCTIONS THE UNIVERSITY OF SYDNEY Level 1, 110 Walker Street, North Sydney NSW 2060, Australia +61 2 9956 2666 hrd@riceandaubney.com hrdinc.com	ARCHITECTS RICE DAUBNEY PROJECT LEES1 BUILDING (F07) THE UNIVERSITY OF SYDNEY CITY ROAD, CAMPERDOWN PROJECT NUMBER 271821.15H	DRAWING TITLE PLAN LEVEL 05	SCALE 1:100 @ A1 CONTRACT NUMBER TBC	CHECKED MS DRAWING NUMBER HDR-AR-DWG-DA05	DATE 13.09.2016 ISSUE G
	<small>THIS DOCUMENT IS THE COPYRIGHT OF THE RICE DAUBNEY GROUP (NSW) PTY LTD. ALL INFORMATION ILLUSTRATED ON THIS DOCUMENT IS TO BE CHECKED AND VERIFIED ON SITE. IN THE EVENT OF DISCREPANCIES REFER TO ARCHITECT PRIOR TO COMMENCEMENT OF THE WORK. DO NOT SCALE DRAWINGS MANUALLY OR ELECTRONICALLY.</small> C:\v\201615H\LEES_1_BUILDING_samh.hoony@hdrinc.com.au								



Updated DA drawing overlay behind original DA for comparison of changes

9/16/2016 11:39:40 AM FOR INFORMATION MS 13.09.2016 CHD DATE	0 1m 20m A1	CONSULTANT Access Consultant Cheung Access Code Compliance B M + G Pty Ltd Comms/Security Engineer JHA Consulting Engineers Electrical Engineer JHA Consulting Engineers	CONSULTANT ESD Consultant JHA Consulting Engineers Facade Engineer Surface Design Consult. Pty Ltd Fire Engineer JHA Consulting Engineers Landscape Architects OCULUS Pty Ltd	CONSULTANT Mechanical Engineer JHA Consulting Engineers Plumbing Engineer JHA Consulting Engineers Structural Engineer Northrop Engineers Pty Ltd	CLIENT RICHARD CROOKES CONSTRUCTIONS THE UNIVERSITY OF SYDNEY Level 1, 110 Walker Street, North Sydney NSW 2060, Australia +61 2 9956 2666 hrd@riceaubney.com hrdinc.com	ARCHITECTS RICE DAUBNEY Level 1, 110 Walker Street, North Sydney NSW 2060, Australia +61 2 9956 2666 hrd@riceaubney.com hrdinc.com	PROJECT LEES1 BUILDING (F07) THE UNIVERSITY OF SYDNEY CITY ROAD, CAMPERDOWN PROJECT NUMBER 271821.15H	DRAWING TITLE PLAN LEVEL 06	SCALE 1:100 @ A1 CONTRACT NUMBER TBC	CHECKED MS DRAWING NUMBER HDR-AR-DWG-DA06	DATE 13.09.2016 ISSUE G
		THIS DOCUMENT IS THE COPYRIGHT OF THE RICE DAUBNEY GROUP (NSW) PTY LTD. ALL INFORMATION ILLUSTRATED ON THIS DOCUMENT IS TO BE CHECKED AND VERIFIED ON SITE. IN THE EVENT OF DISCREPANCIES REFER TO ARCHITECT PRIOR TO COMMENCEMENT OF THE WORK. DO NOT SCALE DRAWINGS MANUALLY OR ELECTRONICALLY.									



Minor dimensional refinements

Internal planning refinements

BOUNDARY

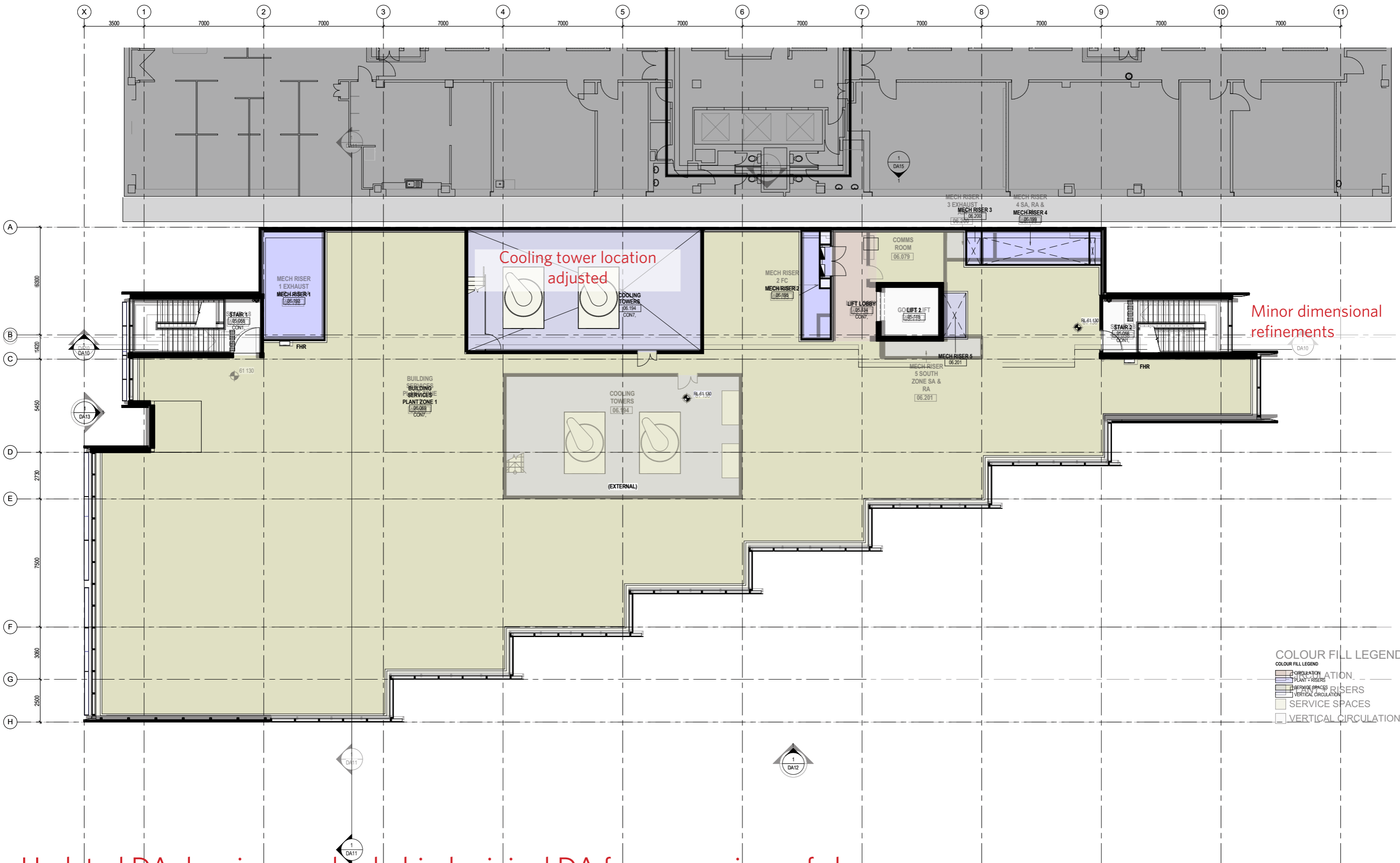
COLOUR FILL LEGEND

[Pattern]	MECHANICAL
[Pattern]	VERTICAL CIRCULATION
[Pattern]	LABS
[Pattern]	COLLABORATION
[Pattern]	OFFICE
[Pattern]	PLANT + RISERS
[Pattern]	SERVICE SPACES
[Pattern]	STORAGE
[Pattern]	VERTICAL CIRCULATION

Updated DA drawing overlay behind original DA for comparison of changes

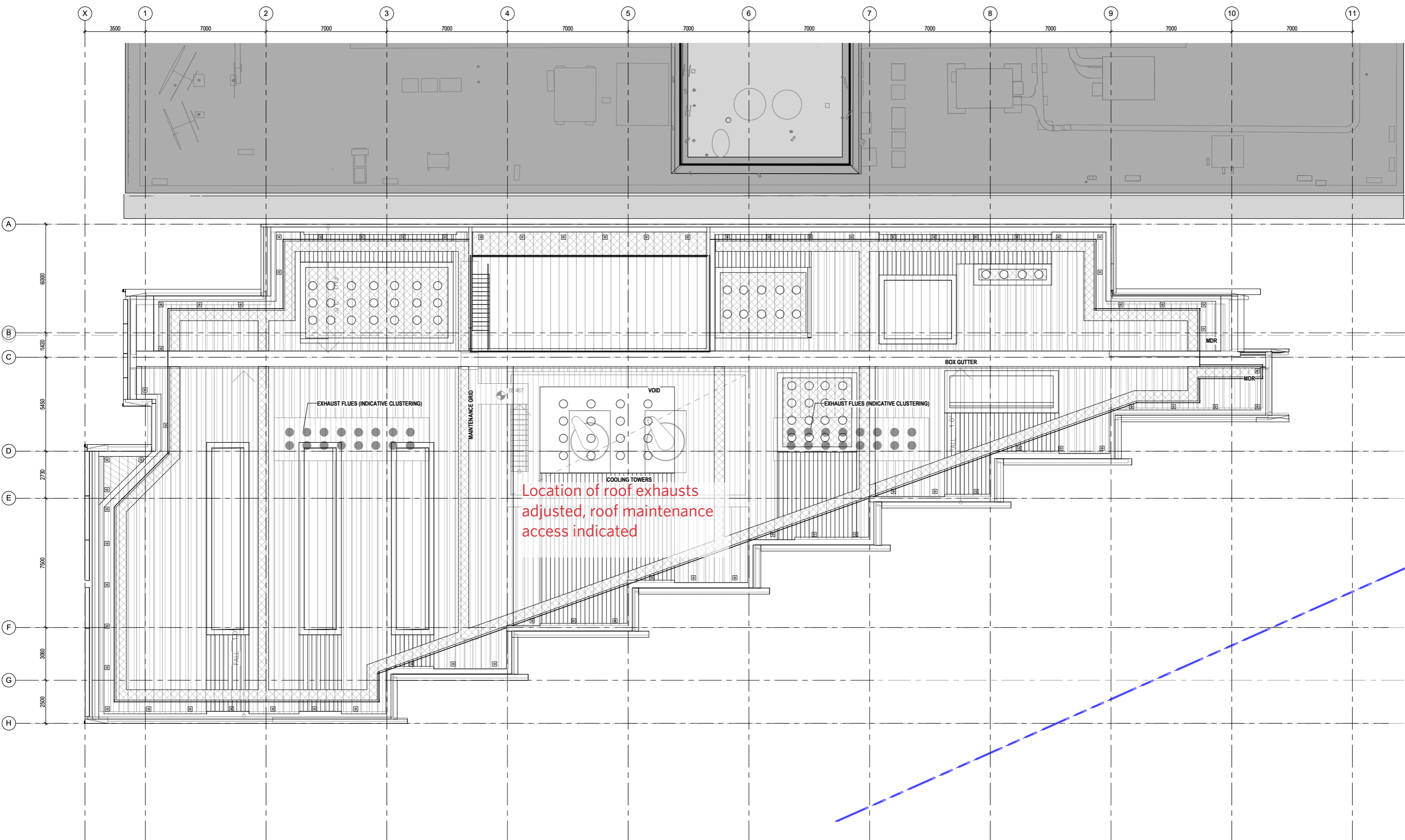
9/16/2016 11:39:46 AM G FOR INFORMATION REV DESCRIPTION OF CHANGE MS 13.09.2016 CHD DATE	CONSULTANT Access Consultant Cheung Access Code Compliance B M + G Pty Ltd Comms/Security Engineer JHA Consulting Engineers Electrical Engineer JHA Consulting Engineers	ESD Consultant JHA Consulting Engineers Facade Engineer Surface Design Consult. Pty Ltd Fire Engineer JHA Consulting Engineers Landscape Architects OCULUS Pty Ltd	MECHANICAL ENGINEER JHA Consulting Engineers Plumbing Engineer JHA Consulting Engineers Structural Engineer Northrop Engineers Pty Ltd	CLIENT RICHARD CROOKES CONSTRUCTIONS THE UNIVERSITY OF SYDNEY	ARCHITECTS HDR RICE DAUBNEY Level 1, 110 Walker Street, North Sydney NSW 2060, Australia +61 2 9956 2666 hdr@ricedaubney.com hdrinc.com	PROJECT LEES1 BUILDING (F07) THE UNIVERSITY OF SYDNEY CITY ROAD, CAMPERDOWN PROJECT NUMBER 271821.15H	DRAWING TITLE PLAN LEVEL 07	SCALE 1:100 @ A1	CHECKED MS	DATE 13.09.2016
								CONTRACT NUMBER TBC	DRAWING NUMBER HDR-AR-DWG-DA07	ISSUE G

THIS DOCUMENT IS THE COPYRIGHT OF THE RICE DAUBNEY GROUP (NSW) PTY LTD. ALL INFORMATION ILLUSTRATED ON THIS DOCUMENT IS TO BE CHECKED AND VERIFIED ON SITE. IN THE EVENT OF DISCREPANCIES REFER TO ARCHITECT PRIOR TO COMMENCEMENT OF THE WORK. DO NOT SCALE DRAWINGS MANUALLY OR ELECTRONICALLY.



Updated DA drawing overlay behind original DA for comparison of changes

9/16/2016 11:35:51 AM G FOR INFORMATION REV DESCRIPTION OF CHANGE	MS 13.09.2016 CHD DATE		CONSULTANT Access Consultant Cheung Access Code Compliance B M + G Pty Ltd Comms/Security Engineer JHA Consulting Engineers Electrical Engineer JHA Consulting Engineers	ESD Consultant JHA Consulting Engineers Facade Engineer Surface Design Consult. Pty Ltd Fire Engineer JHA Consulting Engineers Landscape Architects OCULUS Pty Ltd	Mechanical Engineer JHA Consulting Engineers Plumbing Engineer JHA Consulting Engineers Structural Engineer Northrop Engineers Pty Ltd	CLIENT RICHARD CROOKES CONSTRUCTIONS THE UNIVERSITY OF SYDNEY	ARCHITECTS RICE DAUBNEY Level 1, 110 Walker Street, North Sydney NSW 2060, Australia +61 2 9956 2666 hdricedaubney.com hdrinc.com	PROJECT LEES1 BUILDING (F07) THE UNIVERSITY OF SYDNEY CITY ROAD, CAMPERDOWN PROJECT NUMBER 271821_15H	DRAWING TITLE PLAN LEVEL 08	SCALE 1:100 @ A1	CHECKED MS	DATE 13.09.2016
			CONTRACT NUMBER TBC	DRAWING NUMBER HDR-AR-DWG-DA08	ISSUE G	THIS DOCUMENT IS THE COPYRIGHT OF THE RICE DAUBNEY GROUP (NSW) PTY LTD. ALL INFORMATION ILLUSTRATED ON THIS DOCUMENT IS TO BE CHECKED AND VERIFIED ON SITE. IN THE EVENT OF DISCREPANCIES REFER TO ARCHITECT PRIOR TO COMMENCEMENT OF THE WORK. DO NOT SCALE DRAWINGS MANUALLY OR ELECTRONICALLY.						



Updated DA drawing overlay behind original DA for comparison of changes

9/10/2016 11:39:54 AM FOR INFORMATION MS 13.09.2016 REV DESCRIPTION OF CHANGE CHD DATE		CONSULTANT Access Consultant Cheung Access Code Compliance B.M. + G Pty Ltd Comm/Security Engineer JHA Consulting Engineers Electrical Engineer JHA Consulting Engineers	ESD Consultant JHA Consulting Engineers Facade Engineer Surface Design Consult. Pty Ltd Fire Engineer JHA Consulting Engineers Landscape Architects OCULUS Pty Ltd	Mechanical Engineer JHA Consulting Engineers Plumbing Engineer JHA Consulting Engineers Structural Engineer Northrop Engineers Pty Ltd	CLIENT RICHARD CROOKES CONSTRUCTIONS THE UNIVERSITY OF SYDNEY Level 1, 110 Walker Street, North Sydney NSW 2060, Australia +61 2 9956 2666 hdr@riceaubney.com hdrinc.com	ARCHITECTS RICE DAUBNEY Level 1, 110 Walker Street, North Sydney NSW 2060, Australia +61 2 9956 2666 hdr@riceaubney.com hdrinc.com	PROJECT LEES1 BUILDING (F07) THE UNIVERSITY OF SYDNEY CITY ROAD, CAMPERDOWN PROJECT NUMBER 271821.15H	DRAWING TITLE PLAN ROOF SCALE 1 : 100 @ A1 CONTRACT NUMBER TBC CHECKED MS DRAWING NUMBER HDR-AR-DWG-DA09 DATE 13.09.2016 ISSUE G	THIS DOCUMENT IS THE COPYRIGHT OF THE RICE DAUBNEY GROUP (NSW) PTY LTD. ALL INFORMATION ILLUSTRATED ON THIS DOCUMENT IS TO BE CHECKED AND VERIFIED ON SITE. IN THE EVENT OF DISCREPANCIES REFER TO ARCHITECT PRIOR TO COMMENCEMENT OF THE WORK. DO NOT SCALE DRAWINGS MANUALLY OR ELECTRONICALLY. C:\v\2016\15H LEES 1_BASE BUILDING_samh.hosny@hdrinc.com.au
---	--	--	---	---	--	---	--	---	---