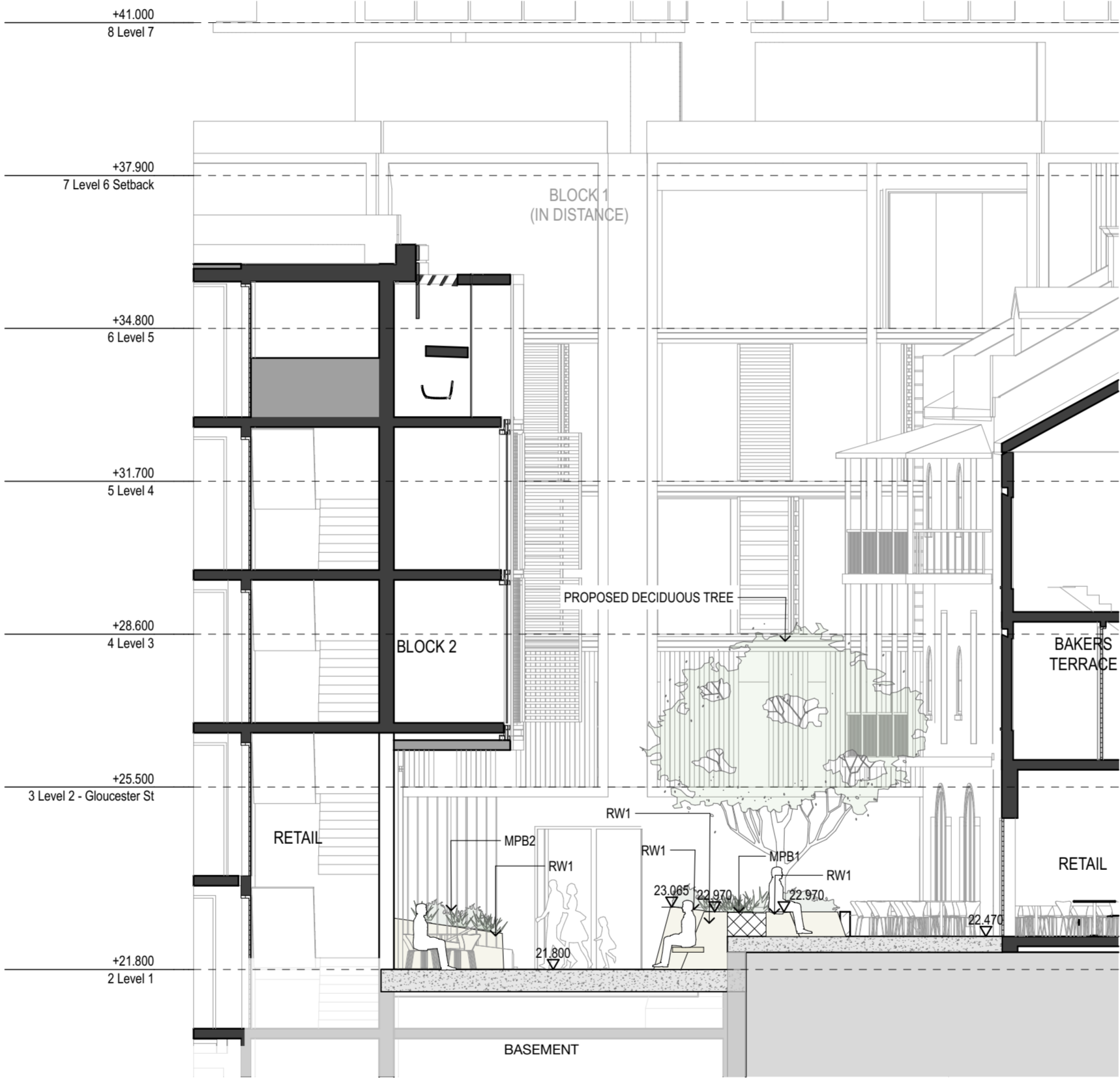


- GENERAL NOTES**
- ALL DIMENSIONS AND EXISTING CONDITIONS SHALL BE CHECKED AND VERIFIED BY THE CONTRACTOR BEFORE PROCEEDING WITH THE WORK
 - ALL LEVELS RELATIVE TO 'AUSTRALIAN HEIGHT DATUM'
 - DO NOT SCALE DRAWINGS. USE FIGURED DIMENSIONS ONLY

KEYPLAN



1 SECTION / ELEVATION Section 2 Bakers Terrace
1:100

EXTERNAL WORKS FINISHES LEGEND

- | | |
|--------------|---|
| CB | Existing Clay Brick Paving to be protected / reinstated
reuse exist paving where possible |
| B1 | Bluestone paving
(ref The Rocks Public Domain Manual - SHFA Draft Jan 2016) |
| S1 | Sandstone paving
(ref The Rocks Public Domain Manual - SHFA Draft Jan 2016) |
| PAV1 | Bluestone paving 800x400 Natural Stone Units –
Sandblasted finish |
| PAV2 | Natural Stone Setts 100x100 – Bluestone colour with split
face finish |
| PAV3 | Natural Stone Stairs: 150x350 Units – Granite to match
Sandstone colour with exfoliated finish |
| PAV4 | Stone paving 800x400 – Granite to match Sandstone
colour with exfoliated finish |
| GRD1 | Grated Drain 200 wide |
| BAL1 | Balustrade to penthouse rooftop terraces |
| BNCH1 | Timber bench seat (Cumberland Place) |
| BYRK1 | Bicycle parking custom Stainless steel curved |
| HR1 | Stainless Steel handrail |
| MPB1 | Mass planting Bed on grade |
| MPB2 | Mass planting in raised planter box over structure |
| RW1 | Sandstone clad wall/raised planter–Syd Sandstone unit size varies |
| RW2 | Raised planter wall - cladding to match architectural finishes |

CODES

- | | |
|--------------|---------------------------------|
| EX RL | Existing Relative Level |
| FFL | Finished Floor Level (internal) |
| RL | Relative Level |
| SSL | Structural Slab Level |
| TK | Top of kerb Level (Survey) |

05	8/8/17	DA Submission	EG
04	10/3/17	Issue for DA	KK
03	2/2/16	Issue for DA	CHS
02	12/1/16	For Coordination	CHS
01	25/11/15	For Coordination	CHS

REVISION	DATE	DESCRIPTION	BY
----------	------	-------------	----



francis-jones morehen thorp

SYDNEY
Level 5, 70 King Street
Sydney NSW 2000 Australia
T +61 2 9251 7077
F +61 2 9251 7072
E fjmt@fjmt.com.au
W www.fjmt.com.au

NOMINATED ARCHITECT: RICHARD FRANCIS-JONES (REG NO 5301)

PROJECT

85 Harrington Street
The Rocks
GOLDEN AGE & HANNAS THE ROCKS

TITLE

Landscape
Section/Elevations

SCALE	1:100 @ A2	PROJECT CODE
DATE	06-08-15	GA85H
SHEET NO.	DA-8011	REVISION
		05

For Approval