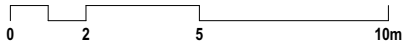


Description:
Please also confirm proposed privacy measures between the balcony of Unit 312 in Building 1 and the balcony serving southern Baker's Terraces townhouse.

Response

An acceptable level of privacy is achieved through the use of fixed screening. The view corridor and primary visual outlook for Unit 312 (Building 1) are directed towards the Cumberland place and beyond. Thus visual privacy is maintained for the residents of the southern Baker's Terrace.



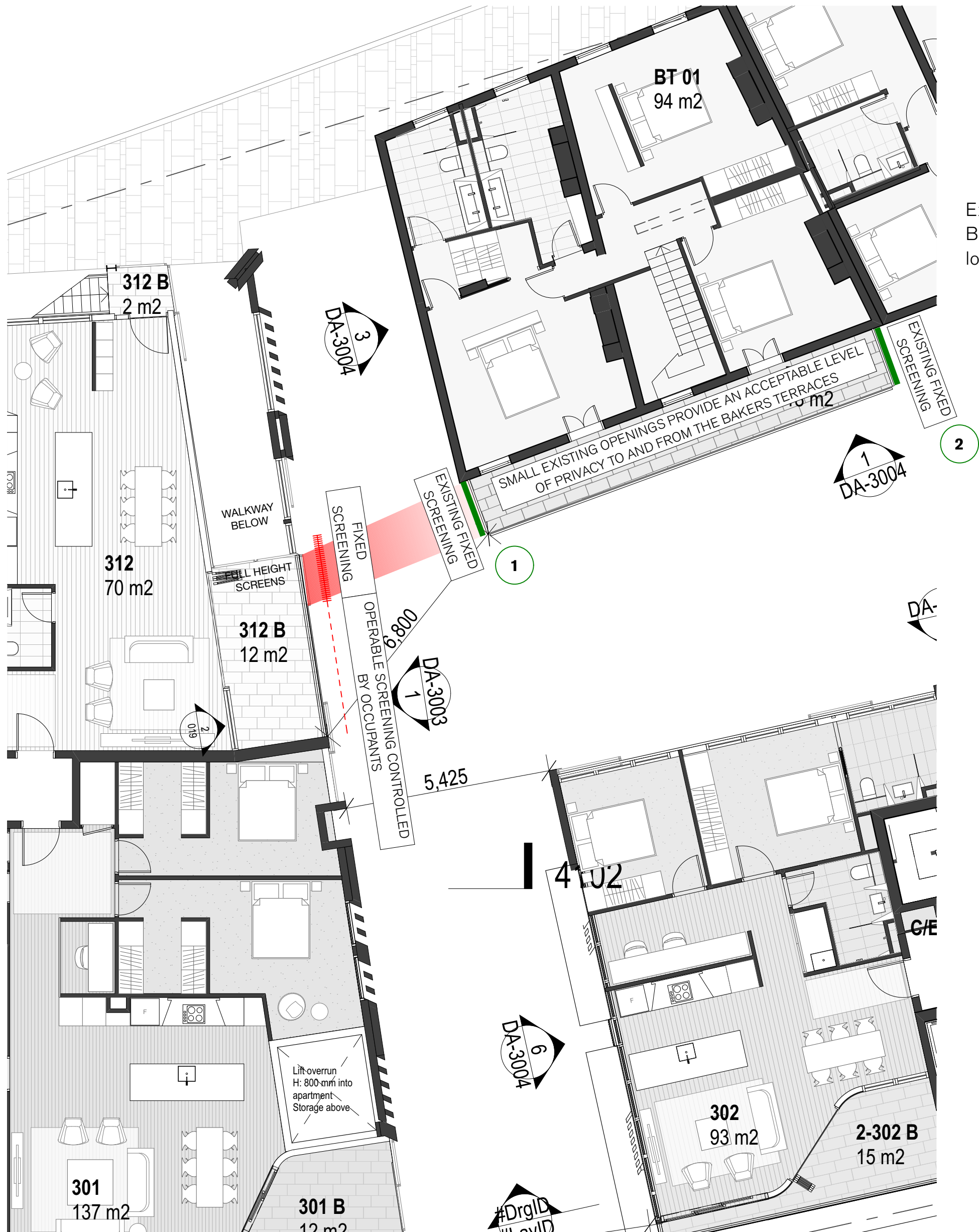
GENERAL NOTES

ALL DIMENSIONS AND EXISTING CONDITIONS SHALL BE CHECKED AND VERIFIED BY THE CONTRACTOR BEFORE PROCEEDING WITH THE WORK

ALL LEVELS RELATIVE TO 'AUSTRALIAN HEIGHT DATUM'

DO NOT SCALE DRAWINGS. USE FIGURED DIMENSIONS ONLY

LEGEND




Existing screen on
Baker's Terrace
lower balcony



1 Existing Baker's Terrace balcony screen (Level 2)



2 Existing Baker's Terrace balcony screen (Level 2)

REVISION		DATE	DESCRIPTION	BY
		SYDNEY Level 5, 70 King Street Sydney NSW 2000 Australia T +61 2 9251 7077 F +61 2 9251 7072 E fjmt@fjmt.com.au W www.fjmt.com.au		
NOMINATED ARCHITECT: RICHARD FRANCIS-JONES (REG NO 5301)				
PROJECT				
85 Harrington Street The Rocks GOLDEN AGE & HANNAS THE ROCKS				
TITLE				
RESPONSE TO DoPE ITEM 1.1 (d)				
SCALE 1:200 @ A2			PROJECT CODE	
DATE 18/10/2017			GA85H	
SHEET NO.			REVISION	
005				

For Review