


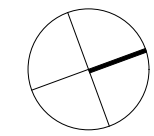
ITEM 1.9

Issue/ Objection:  
Crime Prevention  
Assessment

Description:  
Please provide evidence of measures taken in preventing crime around  
Level 2 public lift, lift access ramp and to the adjacent apartments.

ADG Objective:  
Part 1, Design Quality  
Principle No. 7,  
and  
Objective 4S




Response  
See Below



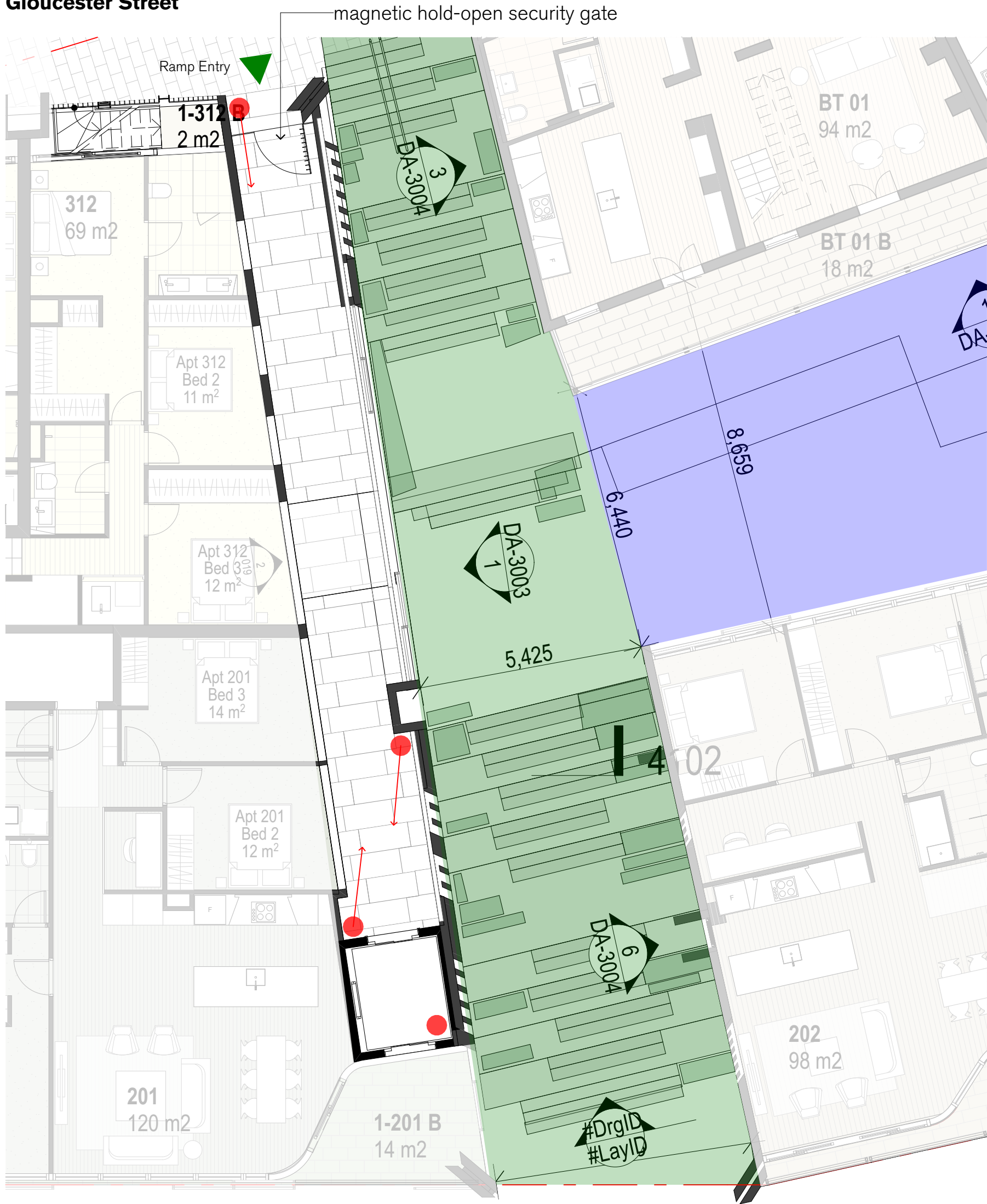
**GENERAL NOTES**

- ALL DIMENSIONS AND EXISTING CONDITIONS SHALL BE CHECKED AND VERIFIED BY THE CONTRACTOR BEFORE PROCEEDING WITH THE WORK
- ALL LEVELS RELATIVE TO 'AUSTRALIAN HEIGHT DATUM'
- DO NOT SCALE DRAWINGS. USE FIGURED DIMENSIONS ONLY

LEGEND

-  Indicative location of  
CCTV camera
-  Through-site link
-  Public open space on Level 2

Gloucester Street



Measures in Crime Prevention

Access

- Restriction of lift access at 10pm
- Provision of a gate on Gloucester Street at the public entry of the lift access ramp
- Gate is accessed controlled with residential over-ride to allow residents in Baker's Terraces to access basement carpark
- Both the gate access and lift access restrictions are operated by building management

Surveillance

Active

- CCTV in locations indicated, feeding to 24/7 building management

Passive


- Passive surveillance from adjacent through-site link and public open space

- Additional passive surveillance from Baker's Terrace balconies and Unit 312 Gloucester Street entry

- Adjacent apartments 201 and 312 achieve acoustic privacy through the utility of double glazing to its windows interfacing with the public ramp.

Signage

- Wayfinding signage will be provided indicating that the area is under surveillance

REVISION	DATE	DESCRIPTION	BY
			<b>SYDNEY</b> Level 5, 70 King Street Sydney NSW 2000 Australia T +61 2 9251 7077 F +61 2 9251 7072 E fjmt@fjmt.com.au W www.fjmt.com.au
NOMINATED ARCHITECT: RICHARD FRANCIS-JONES (REG NO 5301)			
PROJECT			
85 Harrington Street The Rocks GOLDEN AGE & HANNAS THE ROCKS			
TITLE			
RESPONSE TO DoPE ITEM 1.9			
SCALE	1:200 @ A2	PROJECT CODE	
DATE	18/10/2017	GA85H	
SHEET NO.	024	REVISION	