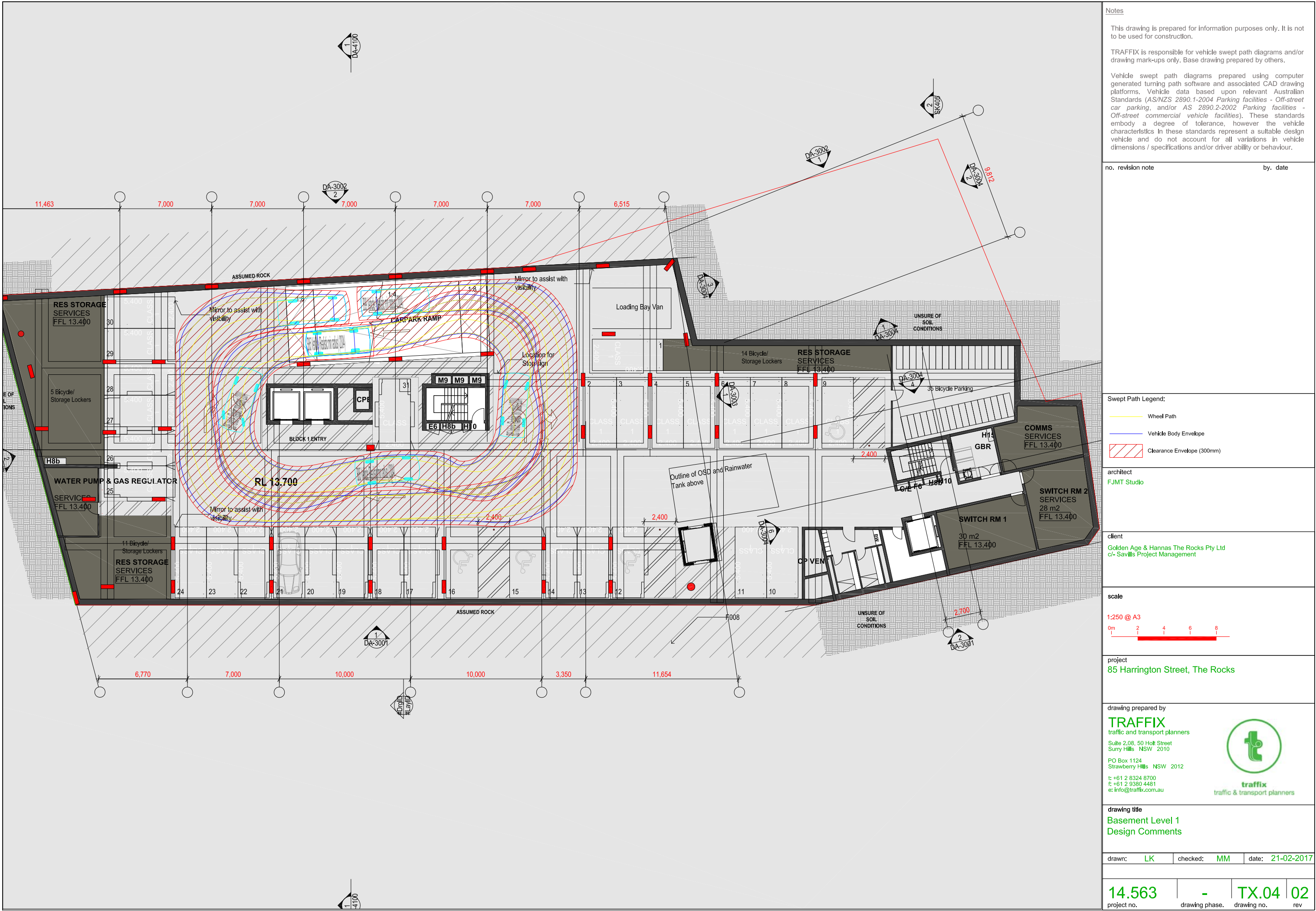


<h1>ITEM 5.5 (a)</h1>	<p><b>Issue/ Objection:</b> Car Parking</p>	<p><b>Description:</b> Note that proposed car park layout does not comply with the relevant Australian Standard AS/NZS 2890.1 with regard to aisle turning, clearances and ramps</p>	<p><b>ADG Objective:</b></p>	<p><b>Response</b> Please refer to additional information provided by Traffic Consultant</p>
-----------------------	---	--	------------------------------	--

## Basement 1 - Swept Paths from Traffic Engineer



REVISION	DATE	DESCRIPTION	BY
PROJECT			
<b>85 Harrington Street</b> <b>The Rocks</b> <b>GOLDEN AGE &amp; HANNAS THE ROCKS</b>			
TITLE			
<b>RESPONSE TO DoPE</b> <b>ITEM 5.5 (a)</b>			
SCALE	1:200 @ A2	PROJECT CODE	
DATE	18/10/2017	<b>GA85H</b>	
SHEET NO.		REVISION	
<b>043</b>			

## For Review