

MAIN BUILDING ENTRIES

ISSUE C

DEVELOPMENT APPLICATION SCHEME



SITE ACCESS AND MAIN BUILDING ENTRIES



GROUND PLANE ACCESSIBILITY

SOPA SITE 53 - MARCH 2016

STREET ACTIVATION



STREET LEVEL ENTRANCES

-  TO COMMON AREAS
-  TO RETAIL
-  TO INDIVIDUAL APARTMENTS

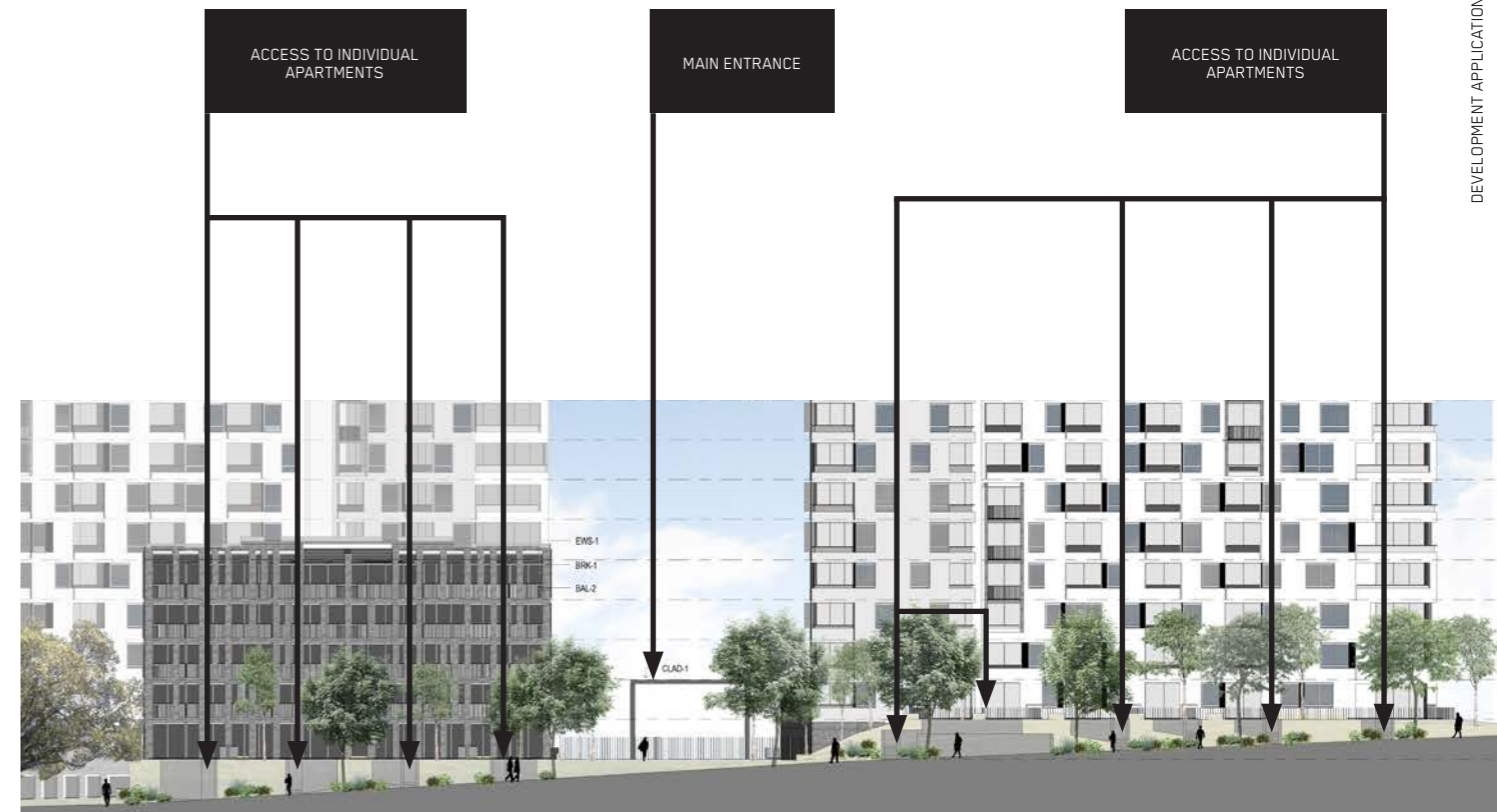
To improve street activation, street level entrances to ground floor apartments are provided wherever possible, although due to significant level differences along New Street (up to 3m between the footpath and ground floor units) it was impracticable to provide steps to every apartment.

The landscape articulation along Figtree drive integrates access stairs to ground floor apartments, and green areas.

A large number of apartments have their primary or secondary outlook onto the linear park, ensuring passive surveillance.

The retail windows along Australia Avenue wrap around the corner, along the linear park for the full extent of the retail lot.

Two entrances address the linear park, one via stairs and one via accessible ramp and lift, providing a direct connection between the private communal garden and the linear park. Additional access to the linear park is provided for pedestrians on New Street



STREET LEVEL ENTRANCES ALONG FIGTREE DRIVE