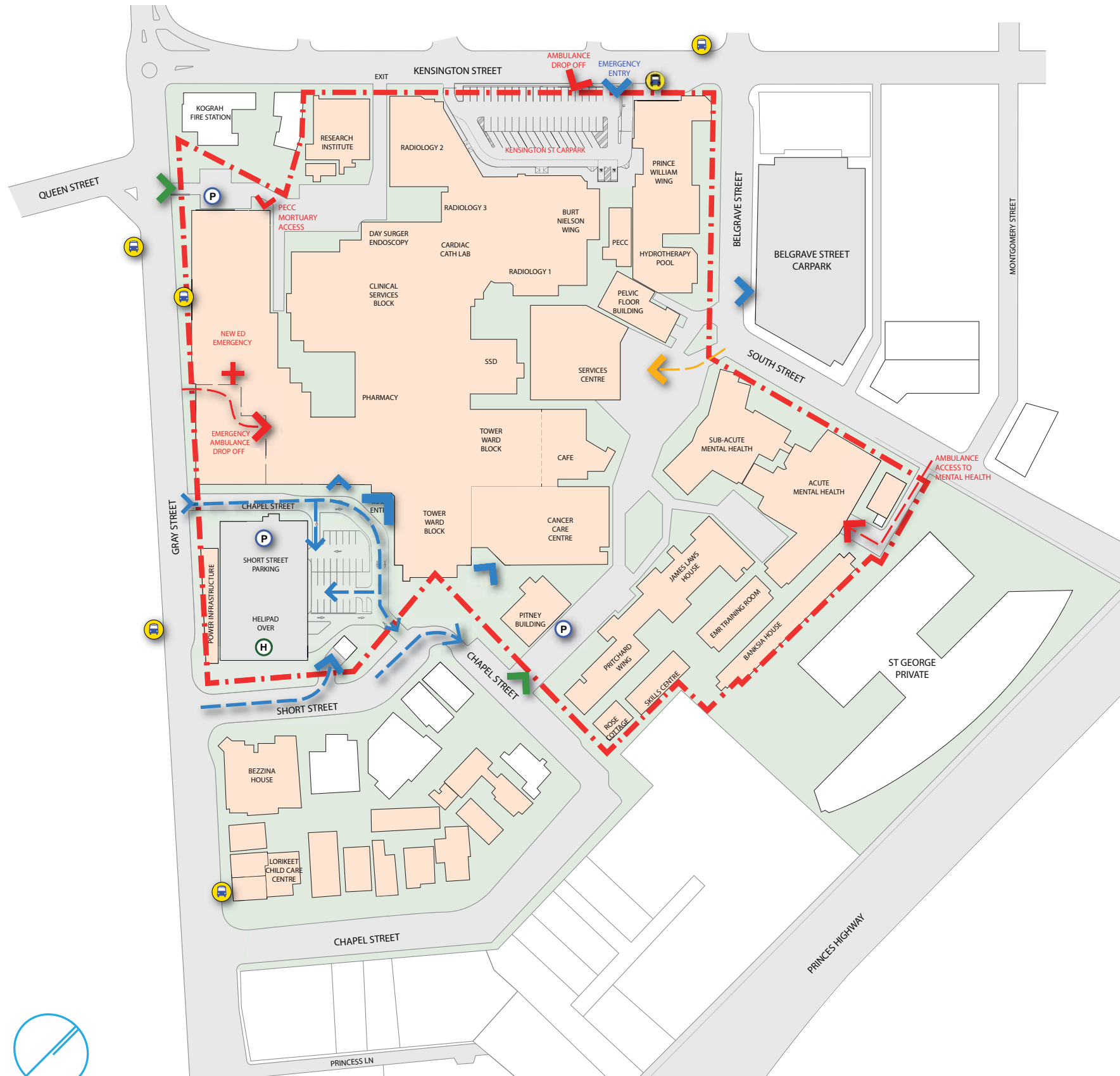


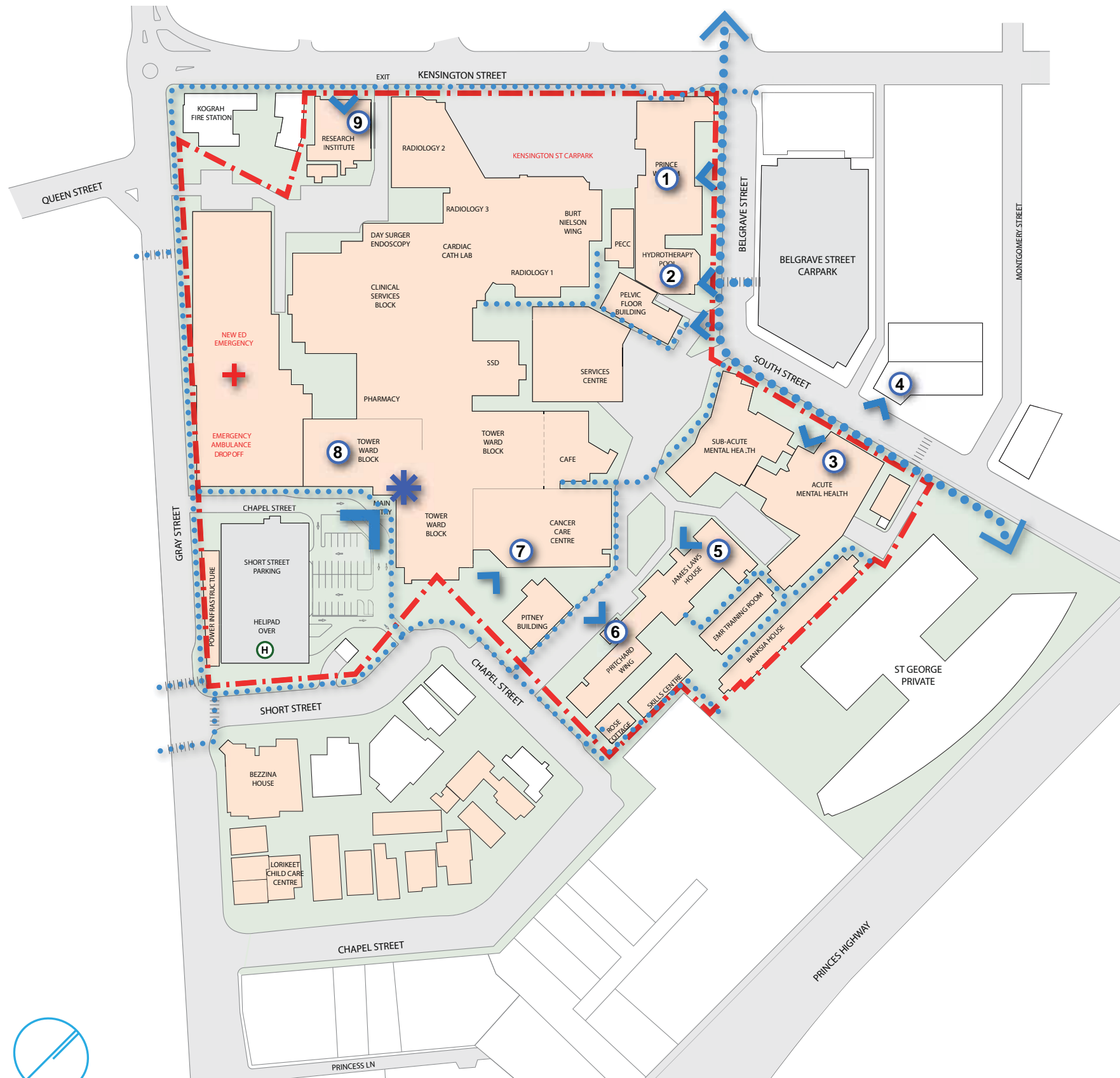
# Site Analysis - Vehicular Access



## LEGEND:

- PUBLIC VEHICLES
- EMERGENCY VEHICLES
- SITE BOUNDARY
- MINOR PUBLIC ENTRANCE
- MAIN PUBLIC ENTRANCE
- SERVICES ENTRANCE
- AMBULANCE ENTRANCE
- STAFF ENTRANCE
- HELI PAD
- BUS STOP
- EMERGENCY DEPARTMENT

# Site Analysis - Pedestrian Access



## LEGEND:

- ● ● ● MAJOR PEDESTRIAN ACCESS
- ● ● ● MINOR PEDESTRIAN ACCESS
- - - - SITE BOUNDARY
- ★ MAIN ENTRY
- SECONDARY PUBLIC ENTRY
- MAIN PUBLIC ENTRY
- ✚ EMERGENCY DEPARTMENT

## DEPARTMENT ENTRY:

- ① REHABILITATION CLINIC
- ② HYDROTHERAPY POOL
- ③ MENTAL HEALTH
- ④ RESEARCH BUILDING
- ⑤ ADMINISTRATION
- ⑥ CLINIC OFFICE
- ⑦ CANCER CENTRE
- ⑧ PROPOSED EMERGENCY ENTRY
- ⑨ RESEARCH BUILDING
- ⑩ EXISTING EMERGENCY ENTRY

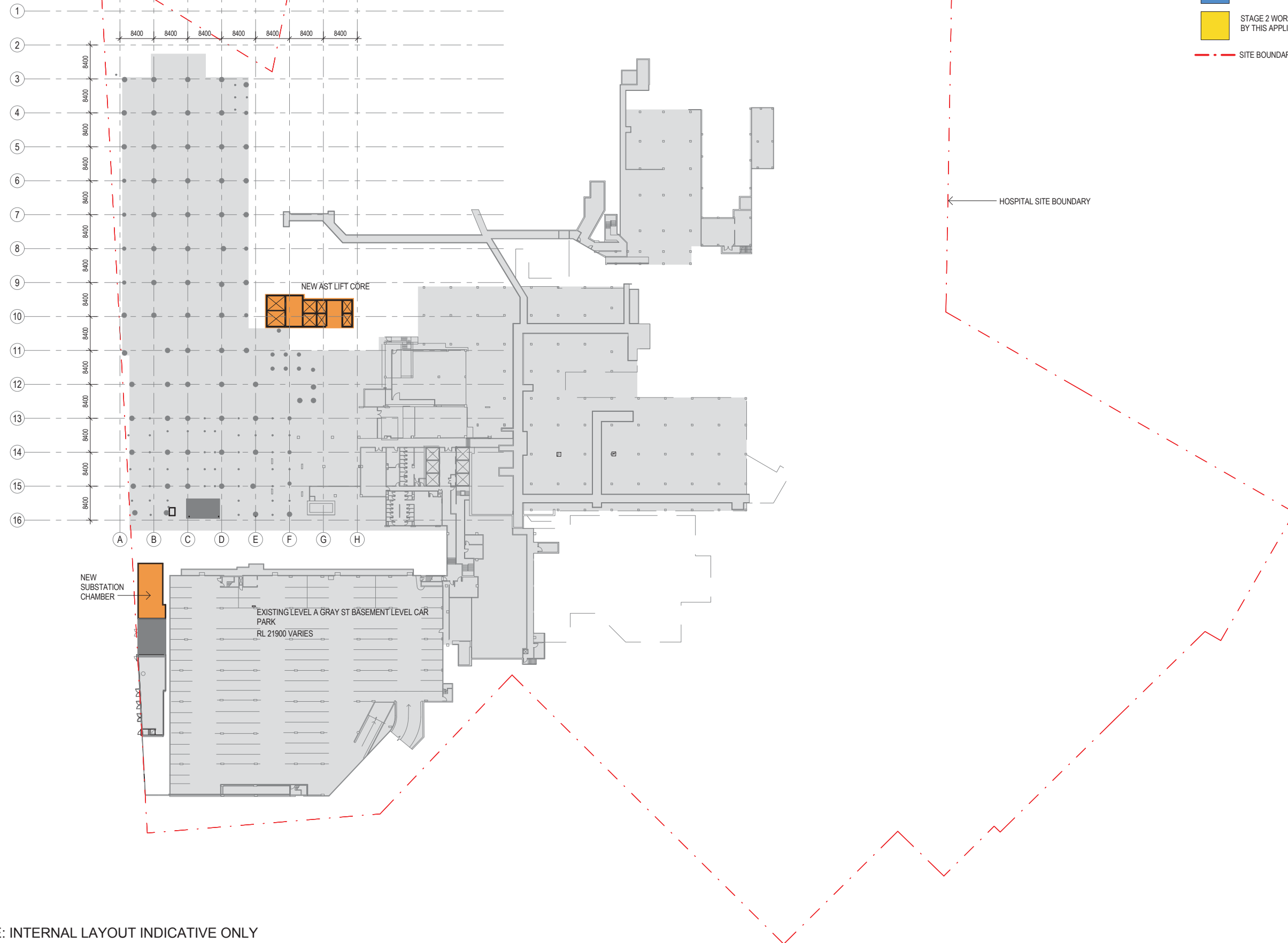


# Site Analysis - Topography



# LEGEND

- STAGE 2 NEW BUILD WORKS COVERED BY THIS APPLICATION
- STAGE 2 REFURBISHMENT WORKS COVERED BY THIS APPLICATION
- STAGE 2 WORKS NOT COVERED BY THIS APPLICATION
- SITE BOUNDARY



NOTE: INTERNAL LAYOUT INDICATIVE ONLY

0 5m 15m 30m 50m

ASB DA 0101  
Basement Plan  
Scale : 1 : 500 Date : 10.12.14 Rev : 5

**JACOBS**  
A/CN 001 004 000  
Jacobs  
100 Collins Street  
Melbourne, VIC 3000  
AUSTRALIA  
Tel: +61 3 9592 2100  
Fax: +61 3 9592 2000  
Email: www.jacobs.com

**aurora**

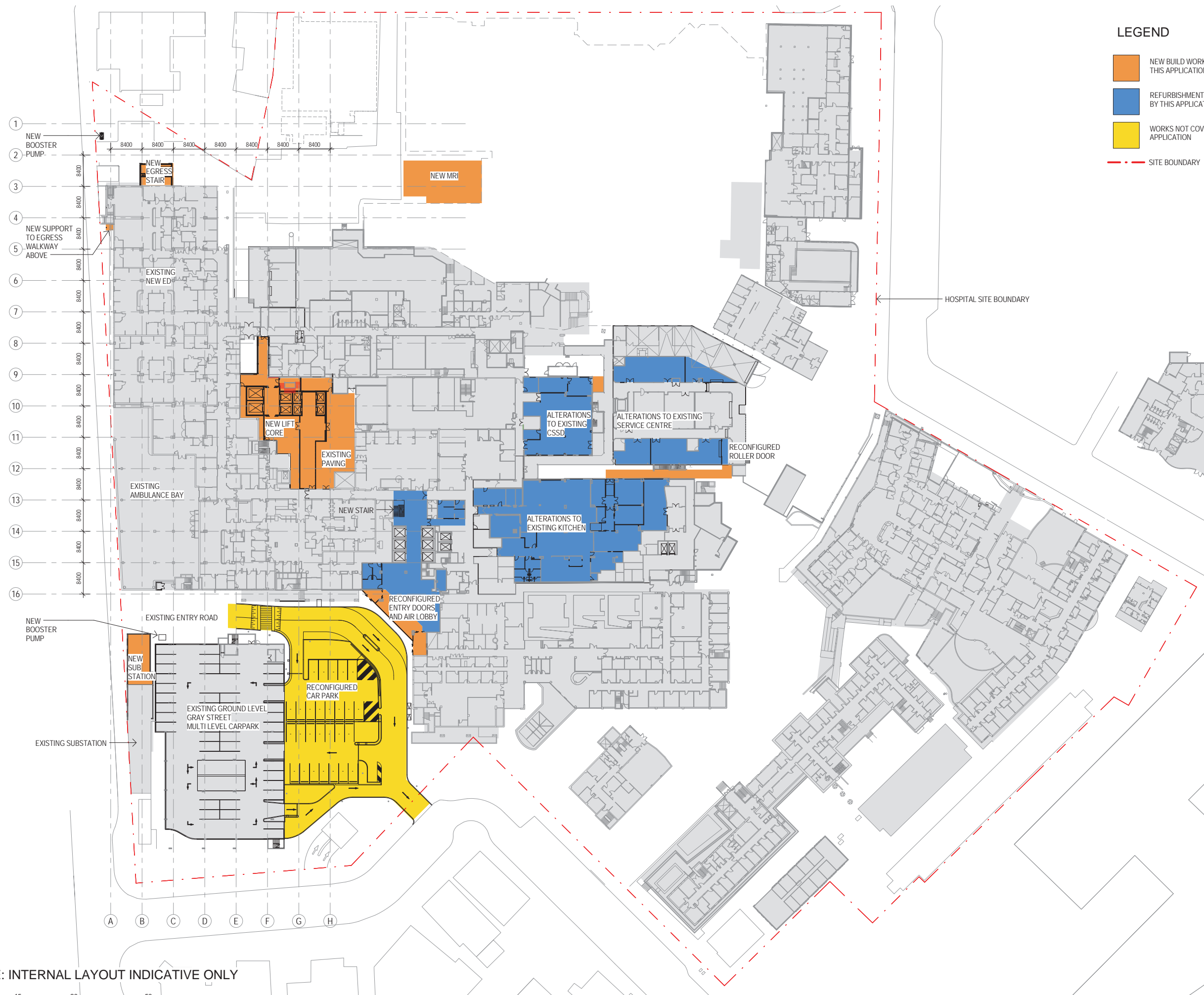
**NSW** Health  
Infrastructure

ST GEORGE HOSPITAL  
ACUTE SERVICES  
BUILDING  
REDEVELOPMENT



# LEGEND

- NEW BUILD WORKS COVERED BY THIS APPLICATION
- REFURBISHMENT WORKS COVERED BY THIS APPLICATION
- WORKS NOT COVERED BY THIS APPLICATION
- SITE BOUNDARY



NOTE: INTERNAL LAYOUT INDICATIVE ONLY

0 5m 15m 30m 50m

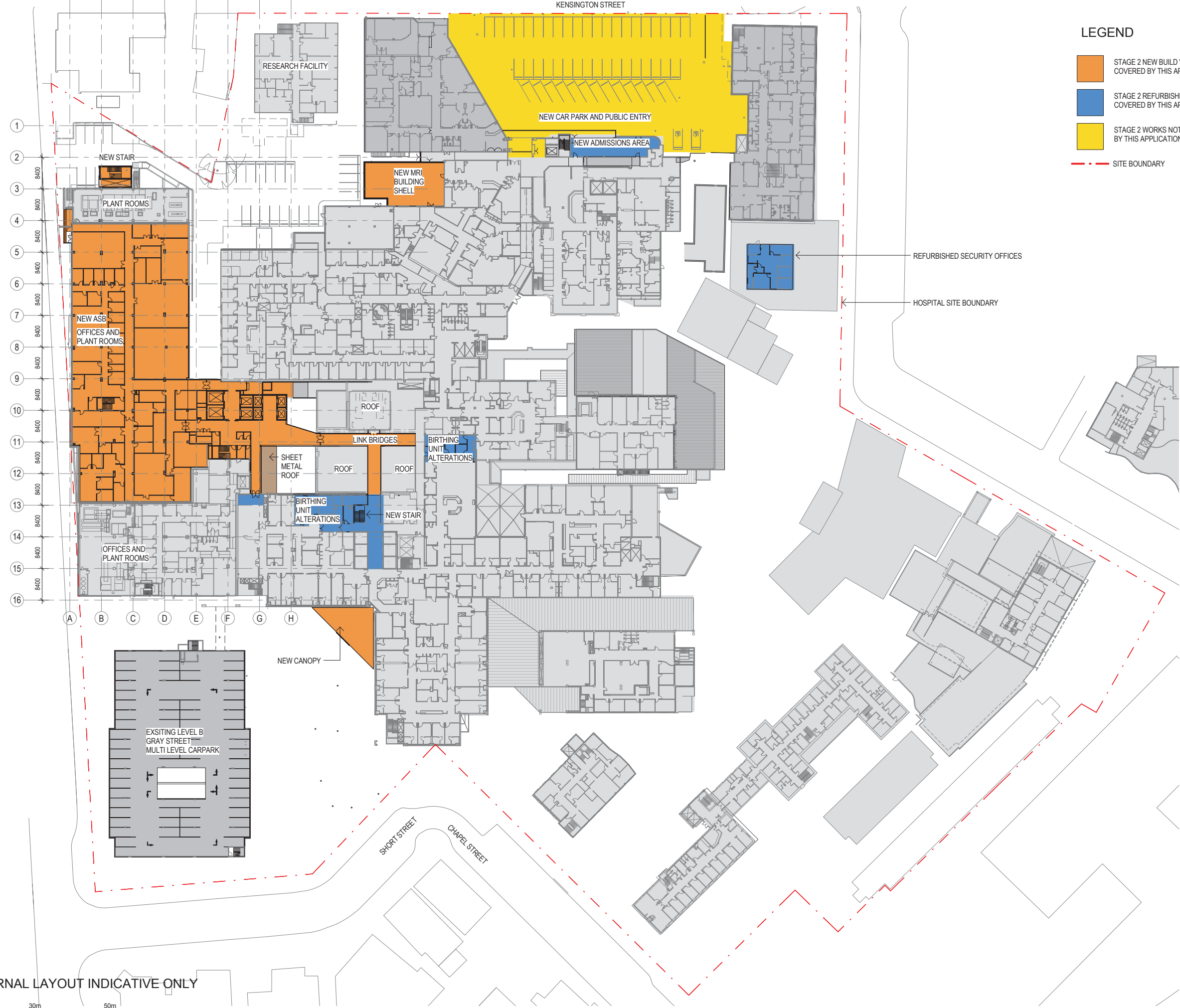
ASB DA 0102  
Ground Floor Plan  
Scale: 1 : 500 Date: 10.12.14 Rev: 5

**JACOBS**  
ACIA 001 04106 Tel: +61 2 9238 2300  
100 Stirling Street Fax: +61 2 9238 2300  
Sydney NSW 2000  
Australia

**aurora**

**NSW** Health  
Infrastructure

ST GEORGE HOSPITAL  
ACUTE SERVICES  
BUILDING  
REDEVELOPMENT



LEGEND

- STAGE 2 NEW BUILD WORKS COVERED BY THIS APPLICATION
- STAGE 2 REFURBISHMENT WORKS COVERED BY THIS APPLICATION
- STAGE 2 WORKS NOT COVERED BY THIS APPLICATION
- SITE BOUNDARY

NOTE: INTERNAL LAYOUT INDICATIVE ONLY

0 5m 15m 30m 50m

ASB DA 0103  
Level 1  
Scale: 1:500 Date: 10.12.14 Rev: 5

JACOBS  
ACN 001 04 000  
100 St Georges Road  
Sydney, NSW 2000  
Australia  
Tel: +61 2 9550 2100  
Fax: +61 2 9550 2100  
Email: www.jacobs.com

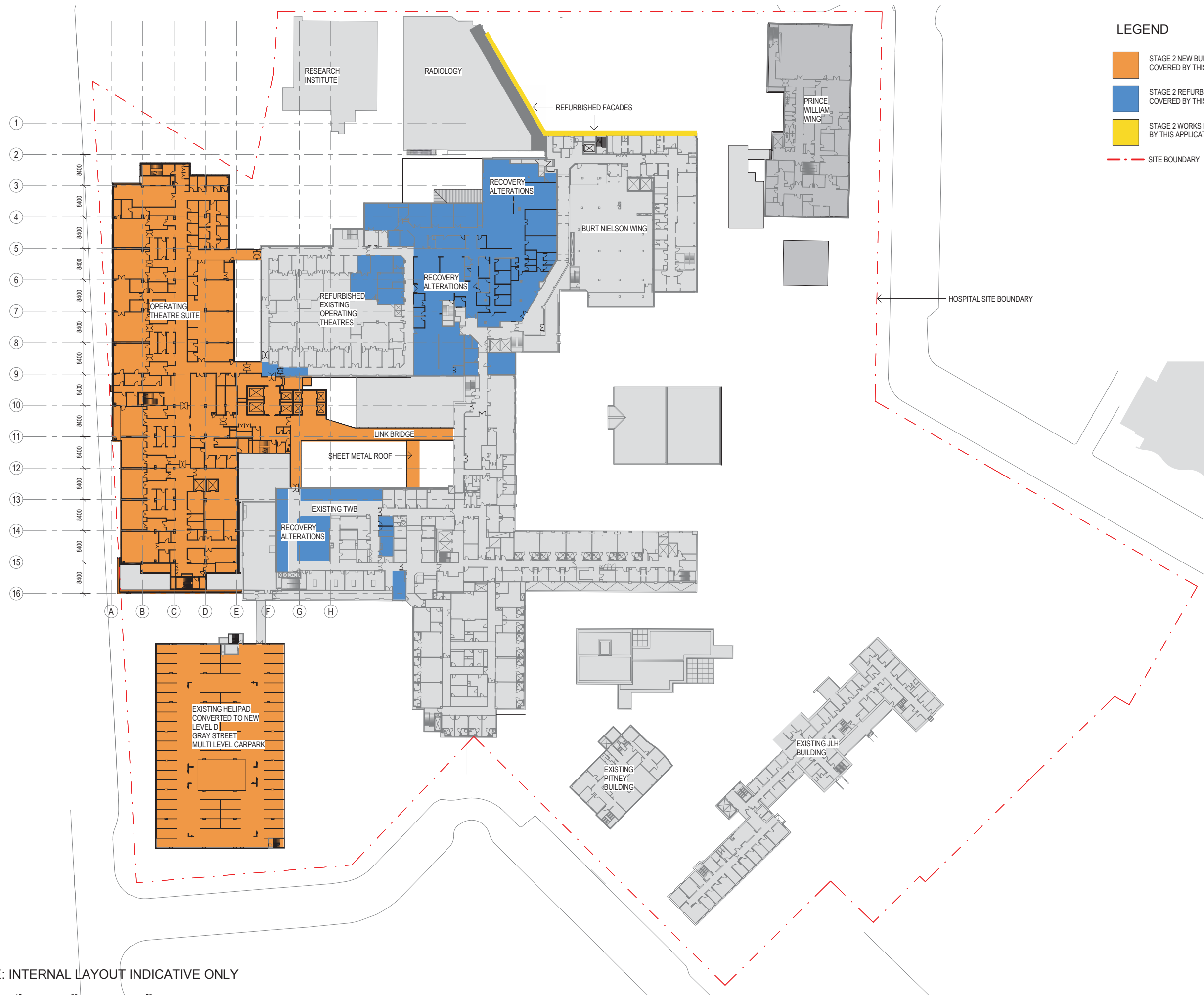
aurora

NSW Health  
Infrastructure

ST GEORGE HOSPITAL  
ACUTE SERVICES  
BUILDING  
REDEVELOPMENT

# LEGEND

- STAGE 2 NEW BUILD WORKS COVERED BY THIS APPLICATION
- STAGE 2 REFURBISHMENT WORKS COVERED BY THIS APPLICATION
- STAGE 2 WORKS NOT COVERED BY THIS APPLICATION
- SITE BOUNDARY



NOTE: INTERNAL LAYOUT INDICATIVE ONLY

0 5m 15m 30m 50m

ASB DA 0104  
Level 2  
Scale: 1:500 Date: 10.12.14 Rev: 5

**JACOBS**  
A/CN 001 024 000 Tel: 401 2300 2100  
Jacobs Fax: 401 2300 2000  
100 Creek Street  
Sydney, NSW 2000  
www.jacobs.com  
AUSTRALIA

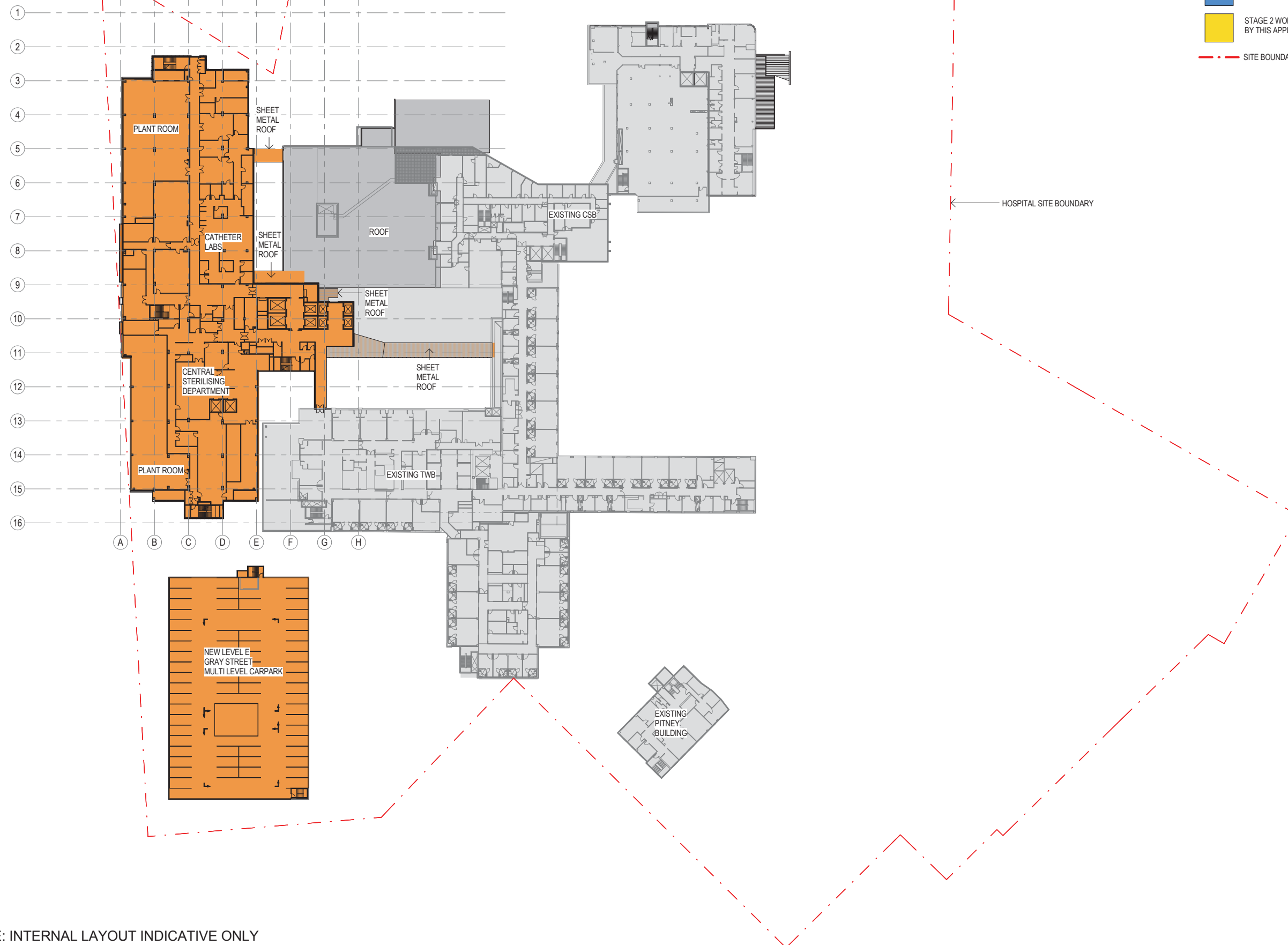
**aurora**

**NSW** Health  
Infrastructure

ST GEORGE HOSPITAL  
ACUTE SERVICES  
BUILDING  
REDEVELOPMENT

# LEGEND

- STAGE 2 NEW BUILD WORKS COVERED BY THIS APPLICATION
- STAGE 2 REFURBISHMENT WORKS COVERED BY THIS APPLICATION
- STAGE 2 WORKS NOT COVERED BY THIS APPLICATION
- SITE BOUNDARY



NOTE: INTERNAL LAYOUT INDICATIVE ONLY

0 5m 15m 30m 50m

ASB DA 0105  
Level 3  
Scale : 1 : 500 Date : 10.12.14 Rev : 5

**JACOBS**  
A/CN 001 024 000  
Jacobs  
100 Collins Street  
Melbourne, VIC 3000  
Australia  
Tel: +61 3 9592 2100  
Fax: +61 3 9592 2000  
Email: www.jacobs.com

**aurora**

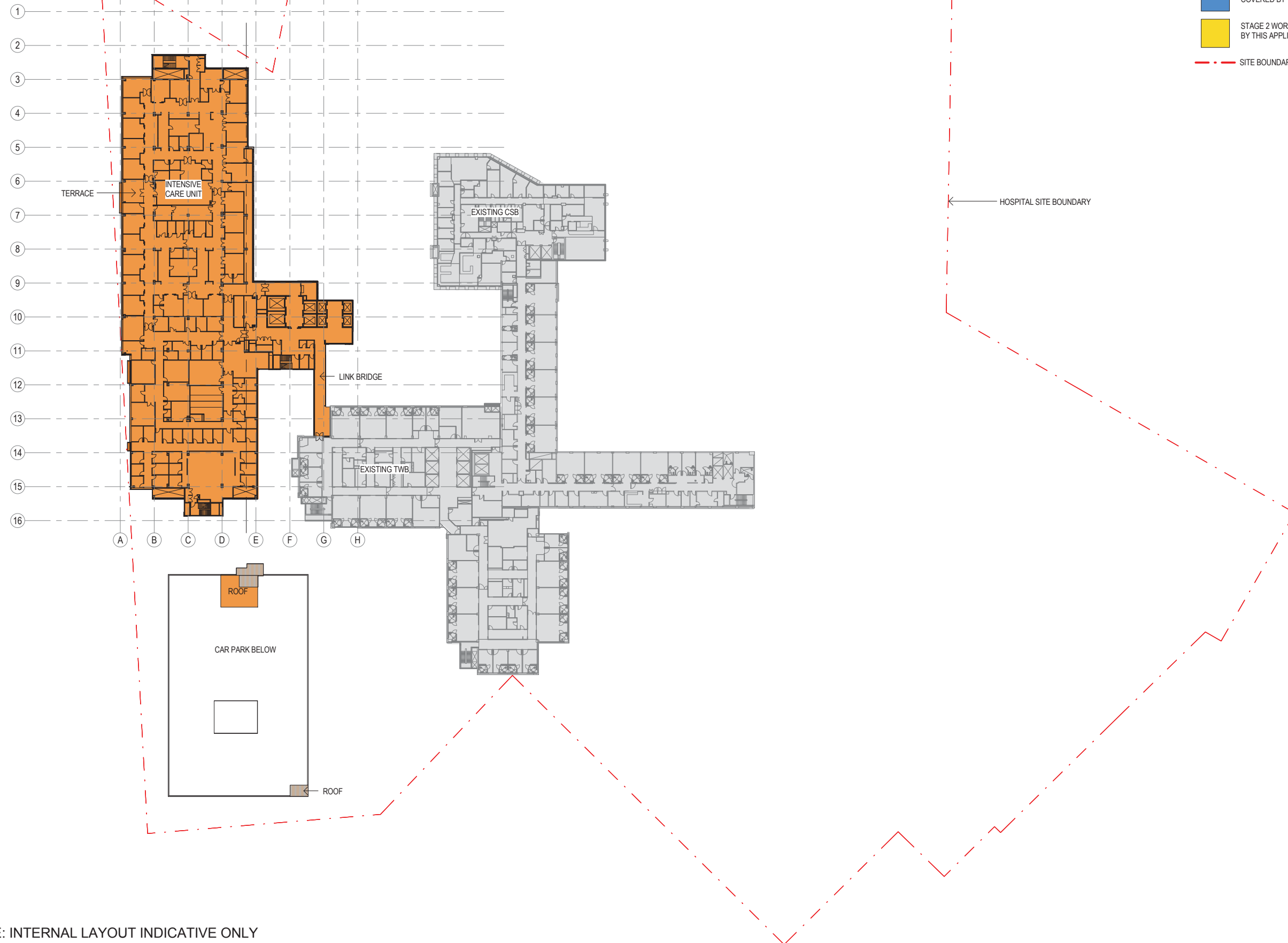
**NSW** Health  
Infrastructure

ST GEORGE HOSPITAL  
ACUTE SERVICES  
BUILDING  
REDEVELOPMENT



# LEGEND

- STAGE 2 NEW BUILD WORKS COVERED BY THIS APPLICATION
- STAGE 2 REFURBISHMENT WORKS COVERED BY THIS APPLICATION
- STAGE 2 WORKS NOT COVERED BY THIS APPLICATION
- SITE BOUNDARY



NOTE: INTERNAL LAYOUT INDICATIVE ONLY

0 5m 15m 30m 50m

ASB DA 0106  
Level 4  
Scale : 1 : 500 Date : 10.12.14 Rev : 4

**JACOBS**  
A/CN 001 004 000  
Jacobs  
100 Collins Street  
Melbourne, VIC 3000  
AUSTRALIA  
Tel: +61 3 9592 2100  
Fax: +61 3 9592 2000  
Email: www.jacobs.com

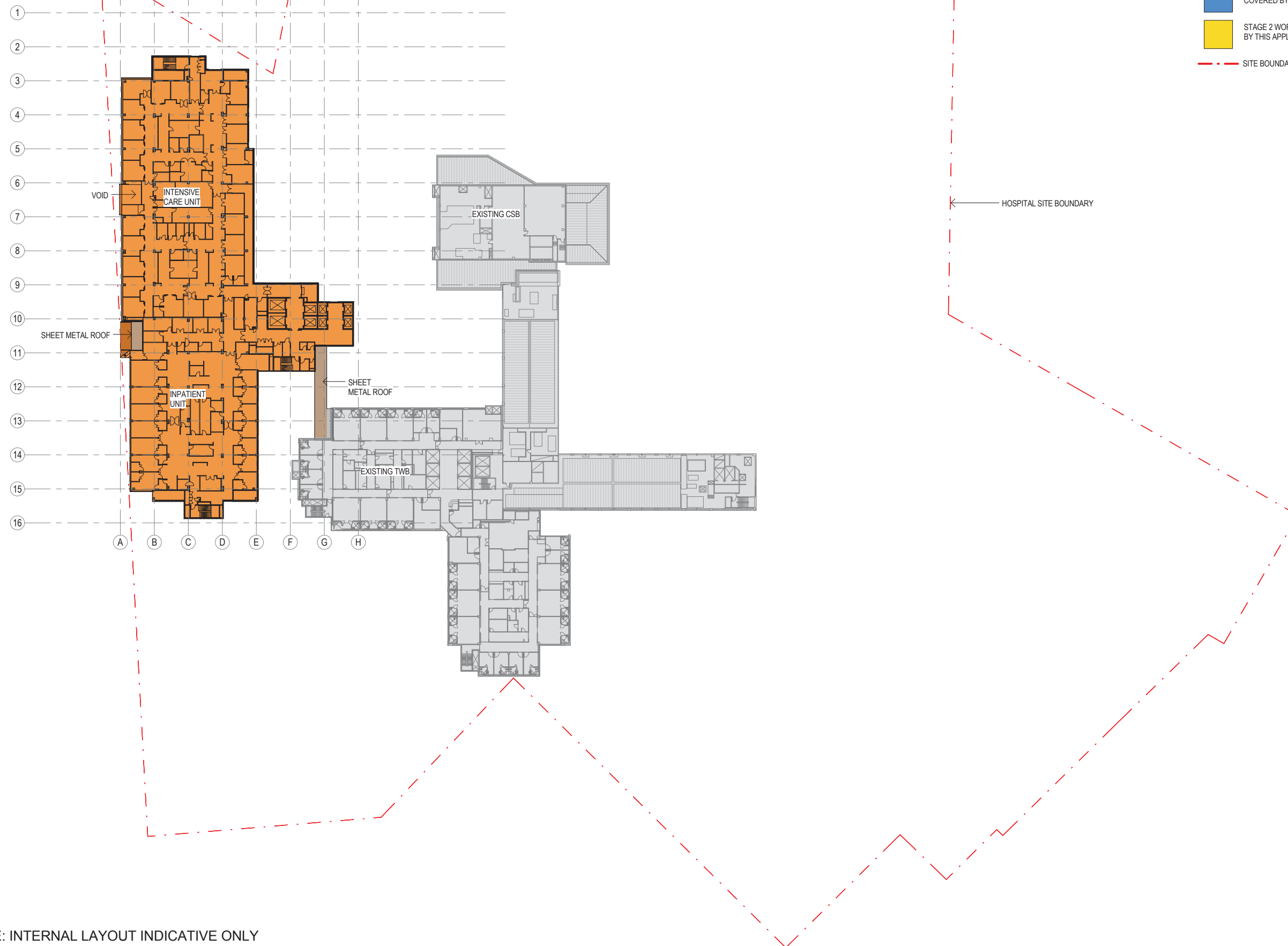
**aurora**

**NSW** Health  
Infrastructure

ST GEORGE HOSPITAL  
ACUTE SERVICES  
BUILDING  
REDEVELOPMENT

# LEGEND

- STAGE 2 NEW BUILD WORKS COVERED BY THIS APPLICATION
- STAGE 2 REFURBISHMENT WORKS COVERED BY THIS APPLICATION
- STAGE 2 WORKS NOT COVERED BY THIS APPLICATION
- SITE BOUNDARY



NOTE: INTERNAL LAYOUT INDICATIVE ONLY

0 5m 15m 30m 50m

ASB DA 0107  
Level 5  
Scale : 1 : 500 Date : 10.12.14 Rev : 4

**JACOBS**  
A/CN 001 004 000  
Jacobs  
100 Creek Road  
St Leonards, SYDNEY,  
NSW 1585  
AUSTRALIA  
Tel: +61 2 9550 2100  
Fax: +61 2 9550 2000  
Email: [www.jacobs.com](mailto:www.jacobs.com)

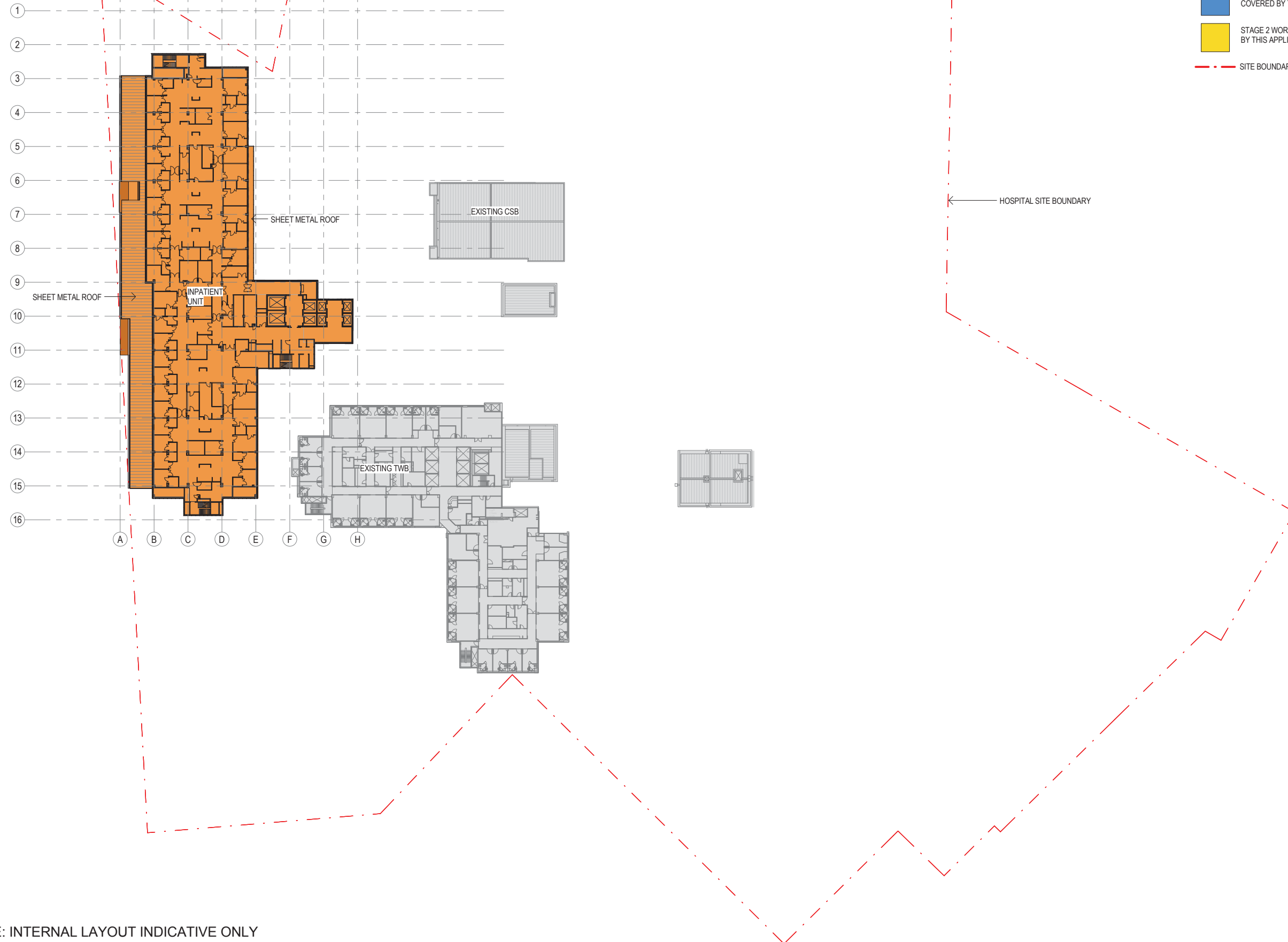
**aurora**

**NSW** Health  
Infrastructure

ST GEORGE HOSPITAL  
ACUTE SERVICES  
BUILDING  
REDEVELOPMENT

# LEGEND

- STAGE 2 NEW BUILD WORKS COVERED BY THIS APPLICATION
- STAGE 2 REFURBISHMENT WORKS COVERED BY THIS APPLICATION
- STAGE 2 WORKS NOT COVERED BY THIS APPLICATION
- SITE BOUNDARY



NOTE: INTERNAL LAYOUT INDICATIVE ONLY

0 5m 15m 30m 50m

ASB DA 0108  
Level 6  
Scale : 1 : 500 Date : 10.12.14 Rev : 4

**JACOBS**  
A/CN 001 024 000  
Jacobs  
100 Collins Street  
Melbourne, VIC 3000  
AUSTRALIA  
Tel: +61 3 9592 2100  
Fax: +61 3 9592 2000  
Email: www.jacobs.com

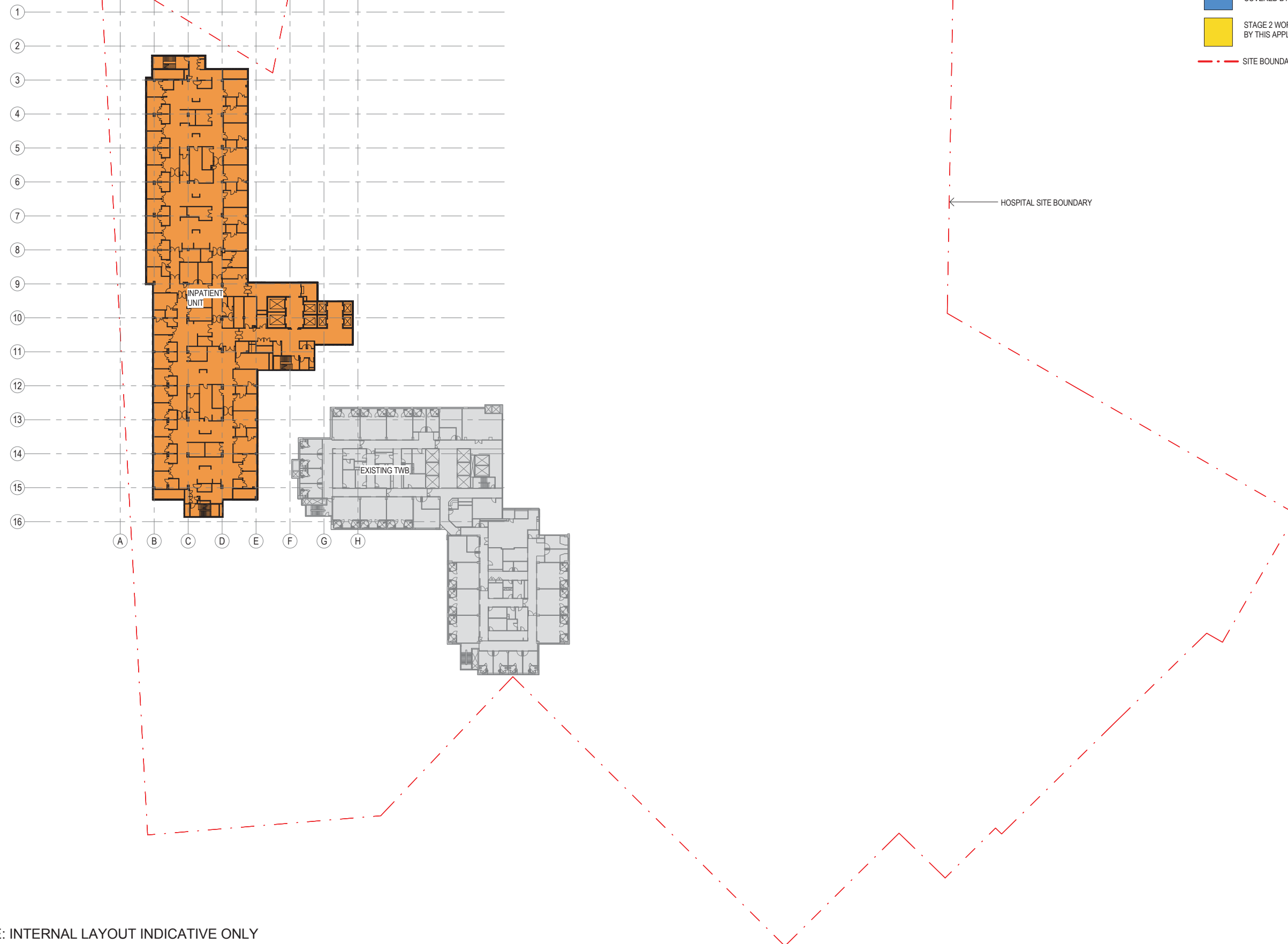
**aurora**

**NSW** Health  
Infrastructure

ST GEORGE HOSPITAL  
ACUTE SERVICES  
BUILDING  
REDEVELOPMENT

# LEGEND

- STAGE 2 NEW BUILD WORKS COVERED BY THIS APPLICATION
- STAGE 2 REFURBISHMENT WORKS COVERED BY THIS APPLICATION
- STAGE 2 WORKS NOT COVERED BY THIS APPLICATION
- SITE BOUNDARY



NOTE: INTERNAL LAYOUT INDICATIVE ONLY

0 5m 15m 30m 50m

ASB DA 0109  
Level 7  
Scale : 1 : 500 Date : 10.12.14 Rev : 4

**JACOBS**  
A/CN 001 024 000  
Jacobs  
100 Collins Street  
Melbourne, VIC 3000  
AUSTRALIA  
Tel: +61 3 9592 2100  
Fax: +61 3 9592 2000  
Email: www.jacobs.com

**aurora**

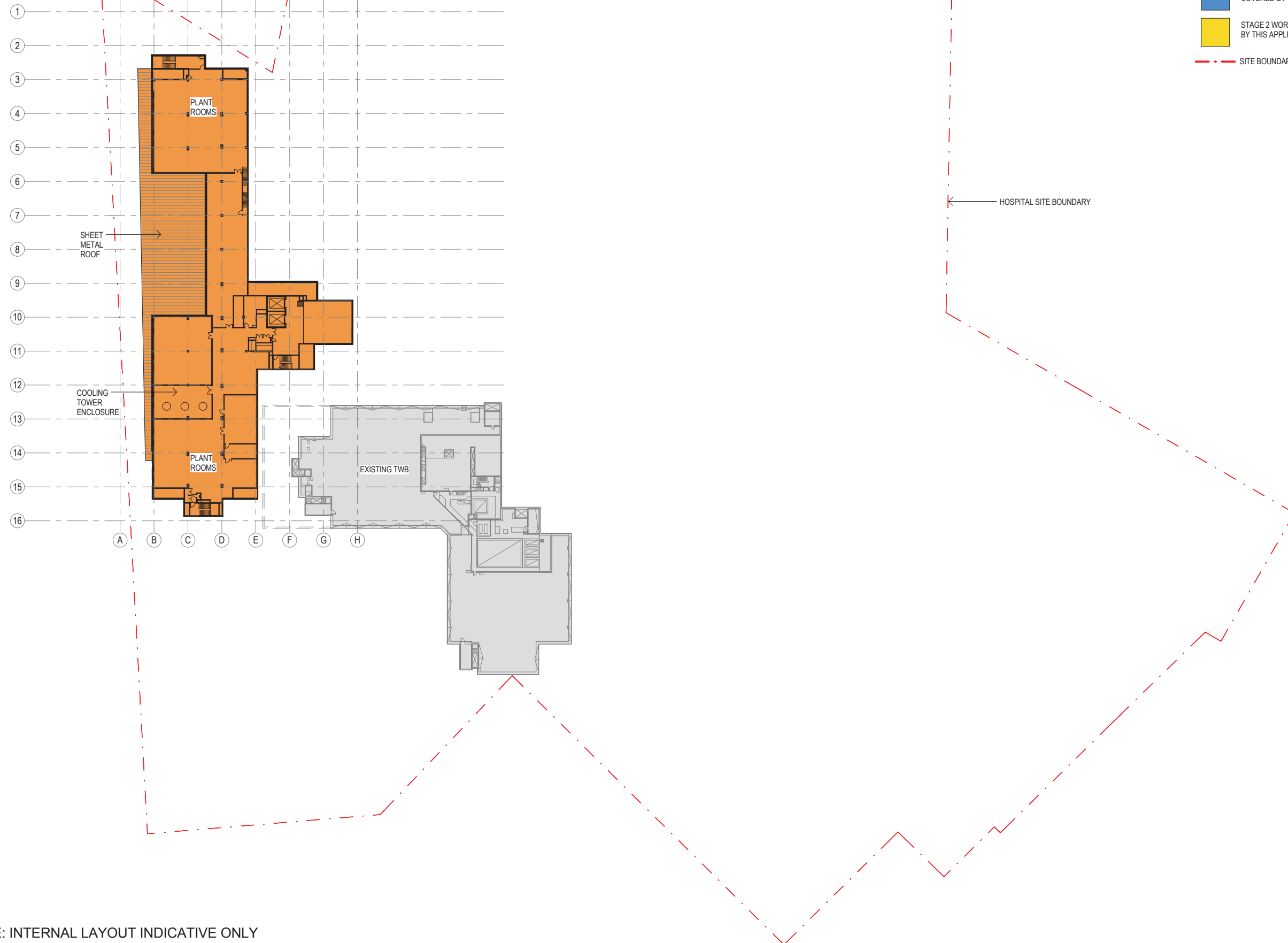
**NSW** Health  
Infrastructure

ST GEORGE HOSPITAL  
ACUTE SERVICES  
BUILDING  
REDEVELOPMENT



# LEGEND

- STAGE 2 NEW BUILD WORKS COVERED BY THIS APPLICATION
- STAGE 2 REFURBISHMENT WORKS COVERED BY THIS APPLICATION
- STAGE 2 WORKS NOT COVERED BY THIS APPLICATION
- SITE BOUNDARY



NOTE: INTERNAL LAYOUT INDICATIVE ONLY

0 5m 15m 30m 50m

ASB DA 0110  
Level 8  
Scale : 1 : 500 Date : 10.12.14 Rev : 4

**JACOBS**  
A/CN 001 004 000  
Jacobs  
100 Collins Street  
Melbourne, VIC 3000  
AUSTRALIA  
Tel: +61 3 9592 2100  
Fax: +61 3 9592 2000  
Email: www.jacobs.com

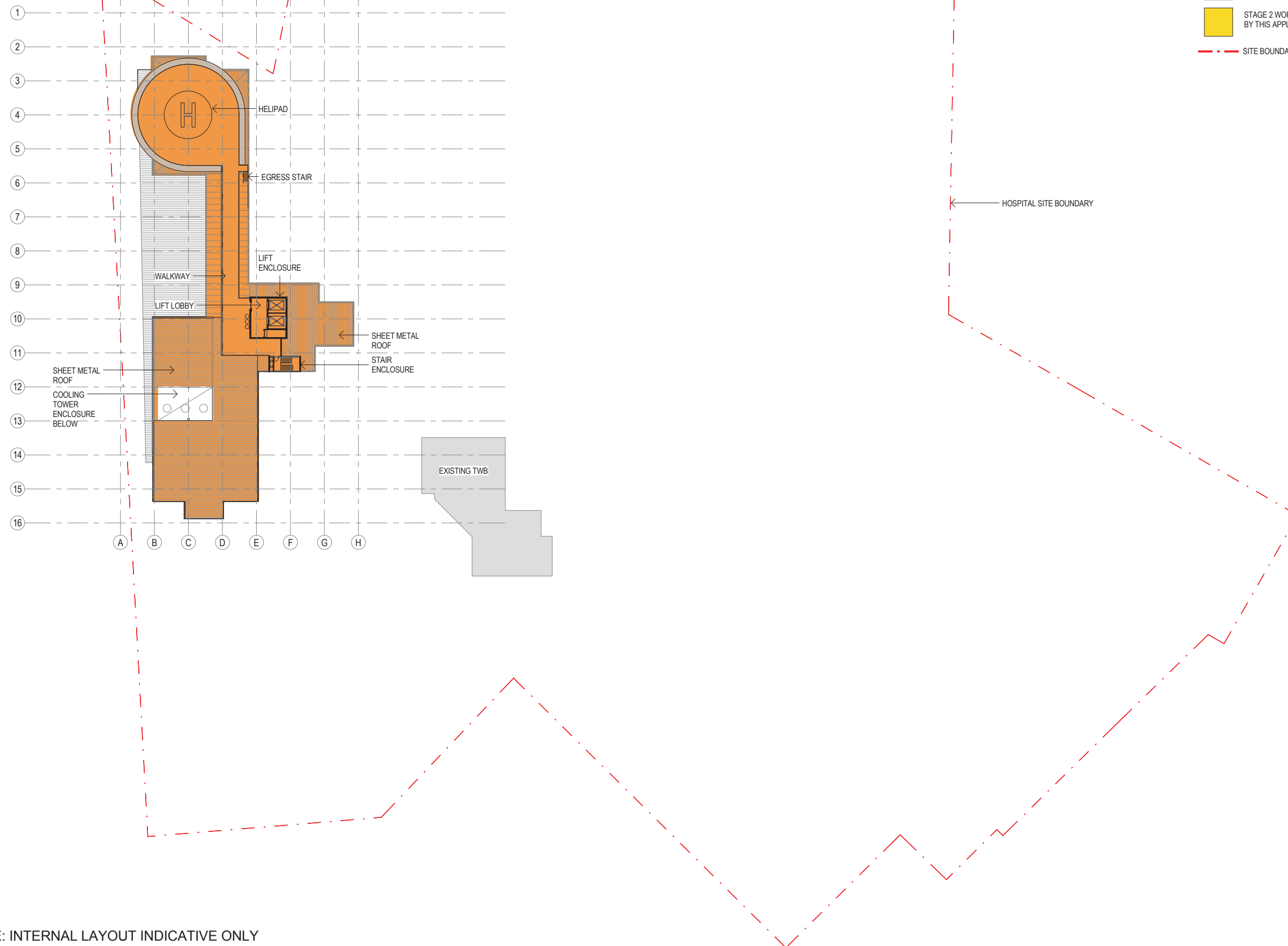
**aurora**

**NSW** Health  
Infrastructure

ST GEORGE HOSPITAL  
ACUTE SERVICES  
BUILDING  
REDEVELOPMENT

# LEGEND

- STAGE 2 NEW BUILD WORKS COVERED BY THIS APPLICATION
- STAGE 2 REFURBISHMENT WORKS COVERED BY THIS APPLICATION
- STAGE 2 WORKS NOT COVERED BY THIS APPLICATION
- SITE BOUNDARY



NOTE: INTERNAL LAYOUT INDICATIVE ONLY

0 5m 15m 30m 50m

ASB DA 0111  
Level 9  
Scale: 1:500 Date: 10.12.14 Rev: 4

**JACOBS**  
A/CN 001 04 000  
Jacobs  
100 Creek Road  
St Leonards, SYDNEY,  
NSW 1585  
AUSTRALIA  
Tel: +61 2 9550 2100  
Fax: +61 2 9550 2000  
Email: www.jacobs.com

**aurora**

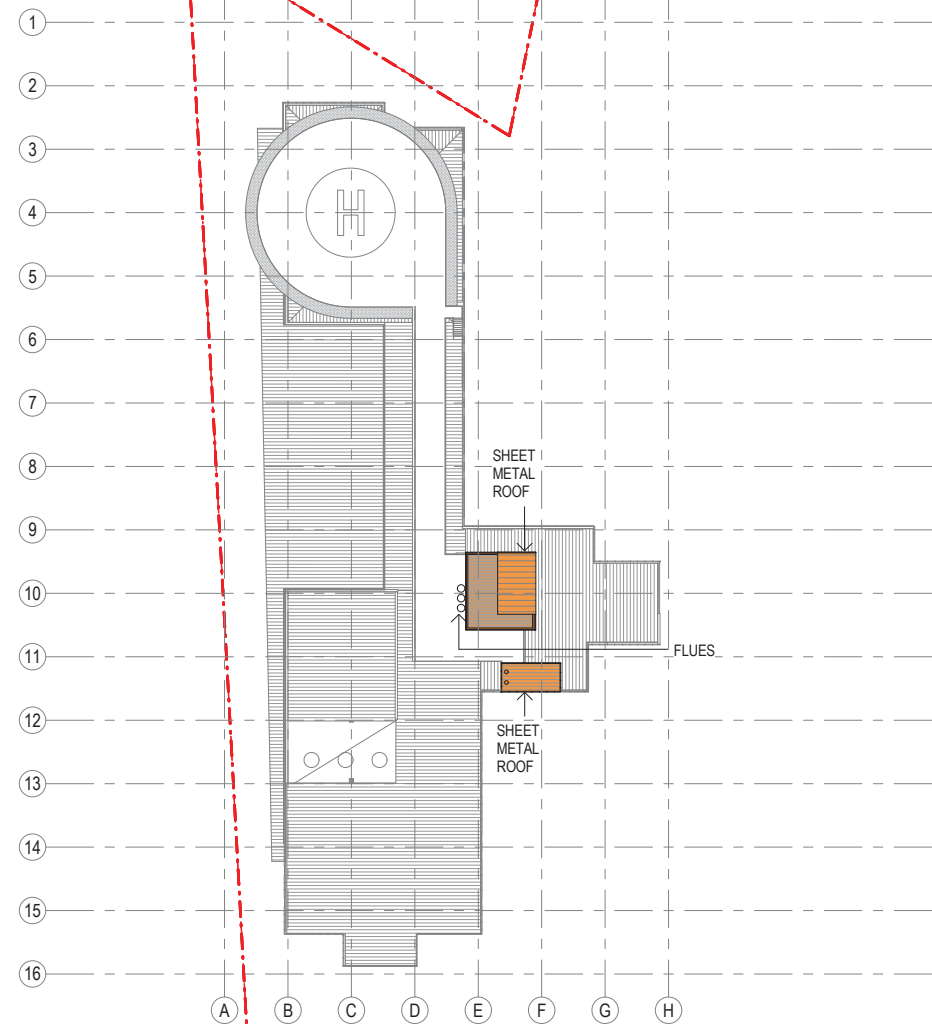
**NSW** Health  
Infrastructure

ST GEORGE HOSPITAL  
ACUTE SERVICES  
BUILDING  
REDEVELOPMENT

10/12/2014 9:38:42 AM

# LEGEND

- STAGE 2 NEW BUILD WORKS COVERED BY THIS APPLICATION
- STAGE 2 REFURBISHMENT WORKS COVERED BY THIS APPLICATION
- STAGE 2 WORKS NOT COVERED BY THIS APPLICATION
- SITE BOUNDARY



HOSPITAL SITE BOUNDARY

NOTE: FLUE LAYOUT INDICATIVE ONLY

0 5m 15m 30m 50m



ASB DA 0112  
Roof Plan  
Scale : 1 : 500 Date : 10.12.14 Rev : 4

**JACOBS**  
A/CN 001 04 000  
Jacobs  
100 Creek Road  
St Leonards, SYDNEY,  
NSW 1585  
AUSTRALIA  
Tel: +61 2 9550 2100  
Fax: +61 2 9550 2000  
Email: [www.jacobs.com](mailto:www.jacobs.com)

**aurora**

**NSW** Health  
Infrastructure

ST GEORGE HOSPITAL  
ACUTE SERVICES  
BUILDING  
REDEVELOPMENT

10/12/2014 9:38:43 AM