

Peak Apartments

Position: P3B

Level: 40

RL: 126.725 (Camera Height)

FOR INFORMATION ONLY

These images have been produced for view analysis purposes only.
Building forms shown include those approved which include State Significant Development Applications SSD 5752 (SSDA1 ICC Core Facilities), SSD 6010 (SSDA3 W2 Site - Student Accommodation), SSD 6013 (SSDA4 NW Plot Mixed Use), SSD 6011 (SSDA5 SW Plot Mixed Use), SSD 6116 (SSDA6 ICC Hotel) and SSD 6626 (SSDA7 NE Plot Mixed Use) and SSD 7133 (SSDA12 W1 Site - Student Accommodation). Building forms currently under assessment are also shown and include SSD 6633 (SSDA9 SE Plot Mixed Use) and SSD 7021 (SSDA10 North Plot (Darling Exchange) and Square.

LEGEND:

Key Building

View Direction (50mm Camera)

Parameter Boxes in the Haymarket Precinct

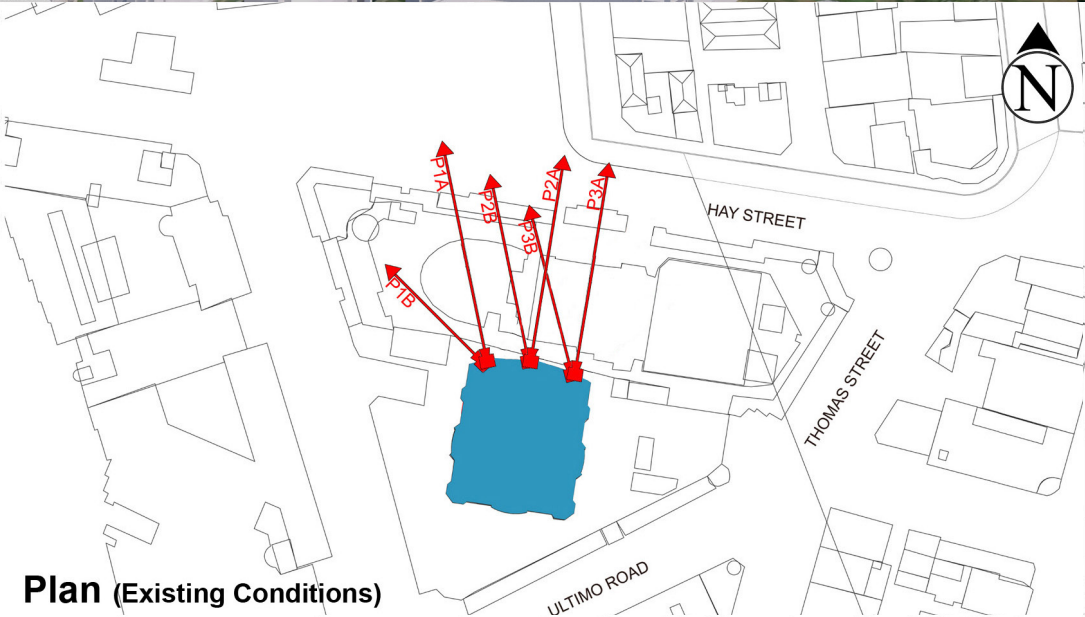
42



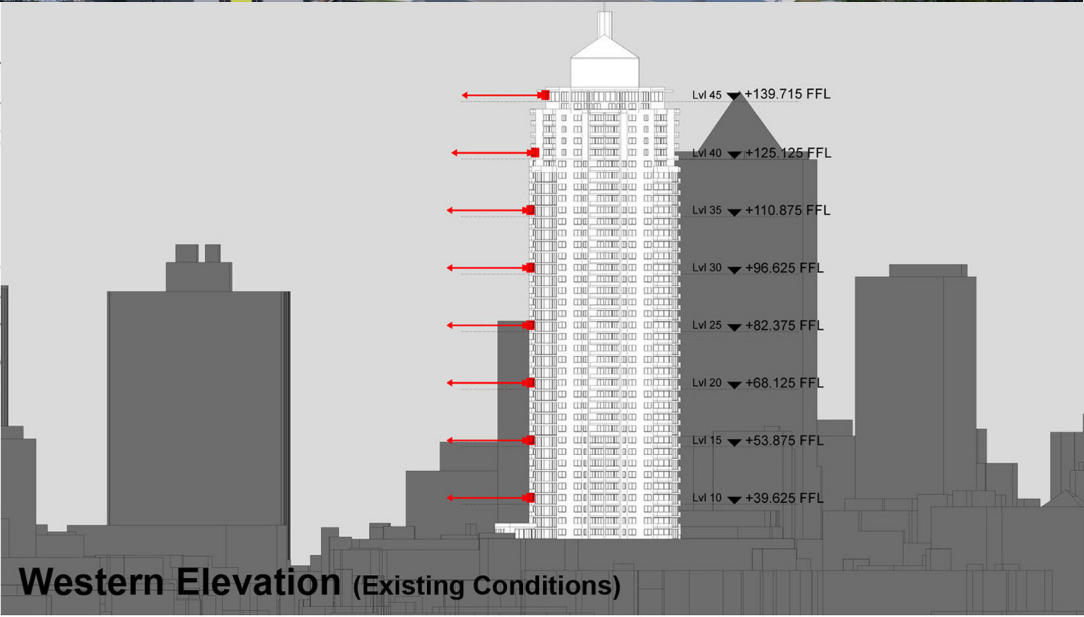
Existing View 2013 (Pre-demolition and construction activity)



Proposed View



Plan (Existing Conditions)



Western Elevation (Existing Conditions)

Peak Apartments

Position: P3B
Level: 35
RL: 112.475 (Camera Height)

FOR INFORMATION ONLY

These images have been produced for view analysis purposes only.
Building forms shown include those approved which include State Significant Development Applications SSD 5752 (SSDA1 ICC Core Facilities), SSD 6010 (SSDA3 W2 Site - Student Accommodation), SSD 6013 (SSDA4 NW Plot Mixed Use), SSD 6011 (SSDA5 SW Plot Mixed Use), SSD 6116 (SSDA6 ICC Hotel) and SSD 6626 (SSDA7 NE Plot Mixed Use) and SSD 7133 (SSDA12 W1 Site – Student Accommodation). Building forms currently under assessment are also shown and include SSD 6633 (SSDA9 SE Plot Mixed Use) and SSD 7021 (SSDA10 North Plot (Darling Exchange) and Square.

LEGEND:

Key Building

View Direction (50mm Camera)

Parameter Boxes in the Haymarket Precinct

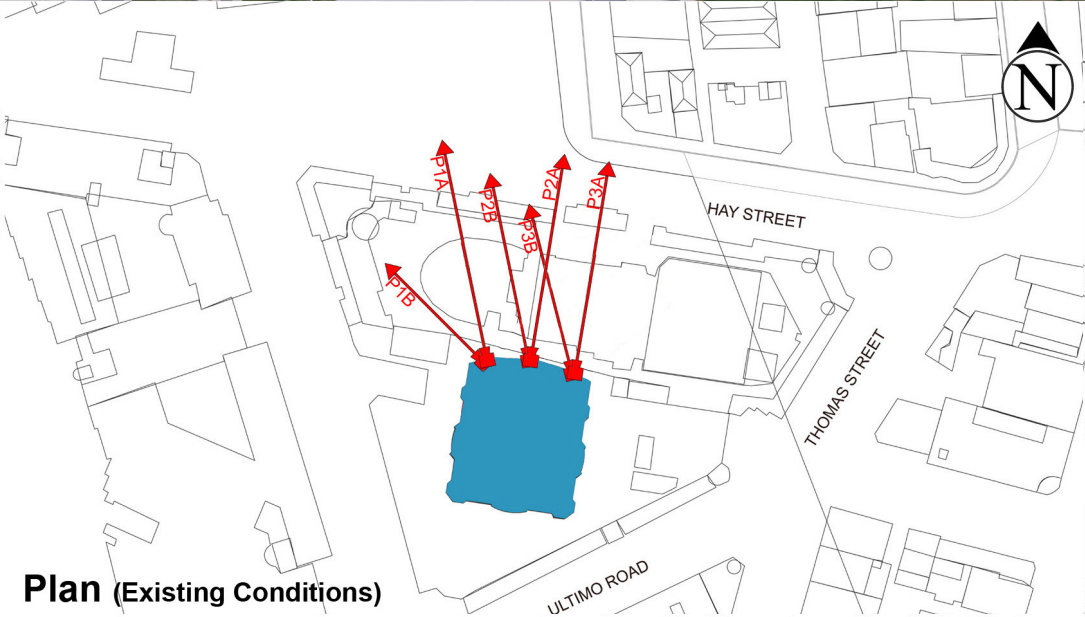
43



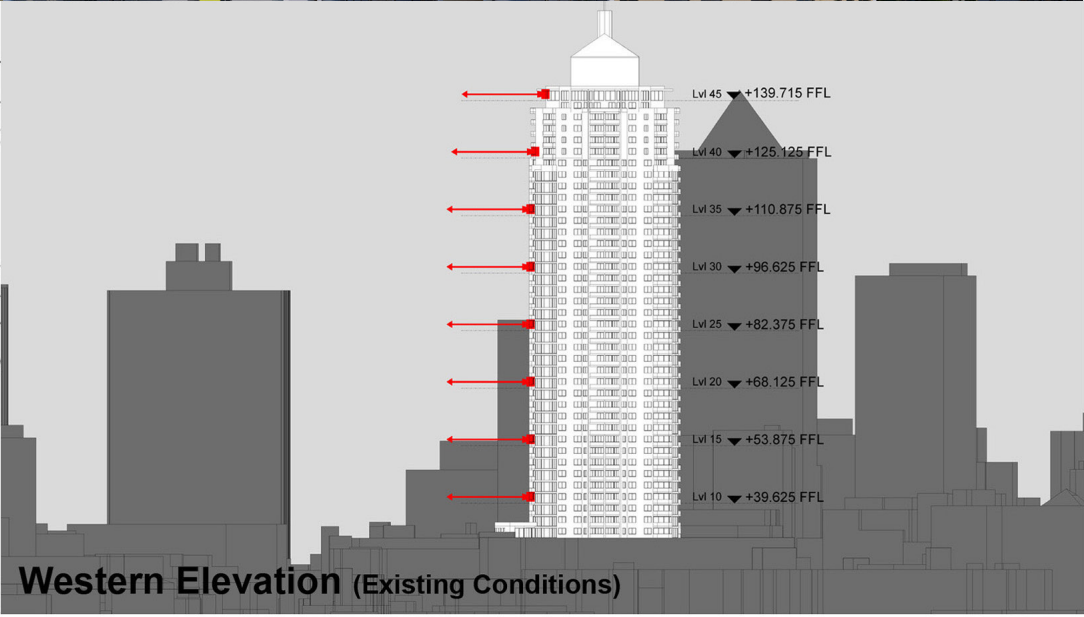
Existing View 2013 (Pre-demolition and construction activity)



Proposed View



Plan (Existing Conditions)



Western Elevation (Existing Conditions)

Peak Apartments

Position: P3B

Level: 30

RL: 98.225 (Camera Height)

FOR INFORMATION ONLY

These images have been produced for view analysis purposes only.

Building forms shown include those approved which include State Significant Development Applications SSD 5752 (SSDA1 ICC Core Facilities), SSD 6010 (SSDA3 W2 Site - Student Accommodation), SSD 6013 (SSDA4 NW Plot Mixed Use), SSD 6011 (SSDA5 SW Plot Mixed Use), SSD 6116 (SSDA6 ICC Hotel) and SSD 6626 (SSDA7 NE Plot Mixed Use) and SSD 7133 (SSDA12 W1 Site - Student Accommodation). Building forms currently under assessment are also shown and include SSD 6633 (SSDA9 SE Plot Mixed Use) and SSD 7021 (SSDA10 North Plot (Darling Exchange) and Square.

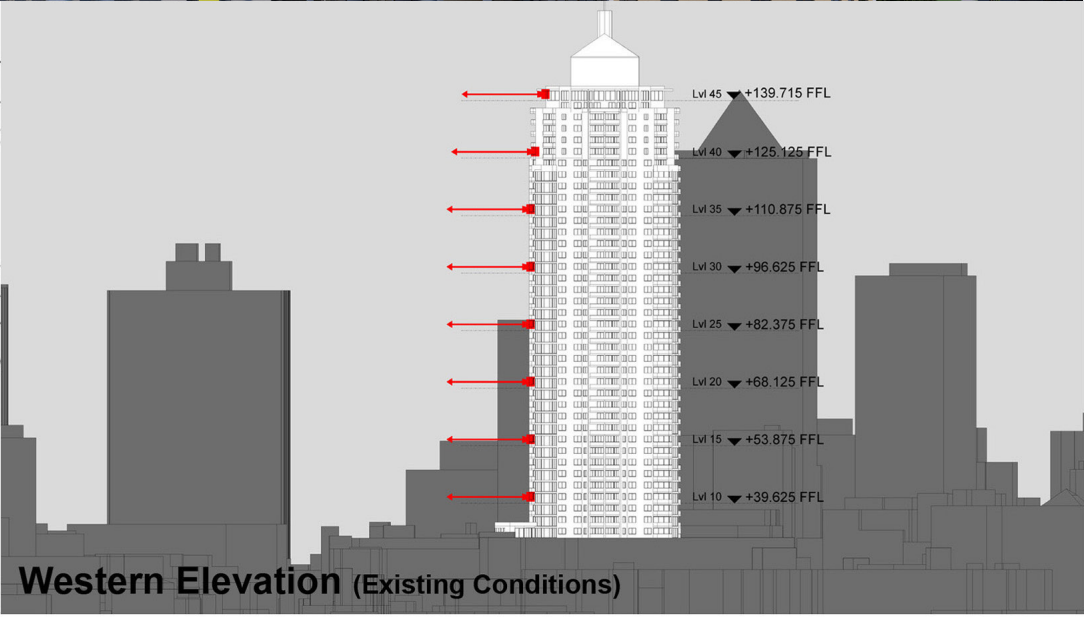
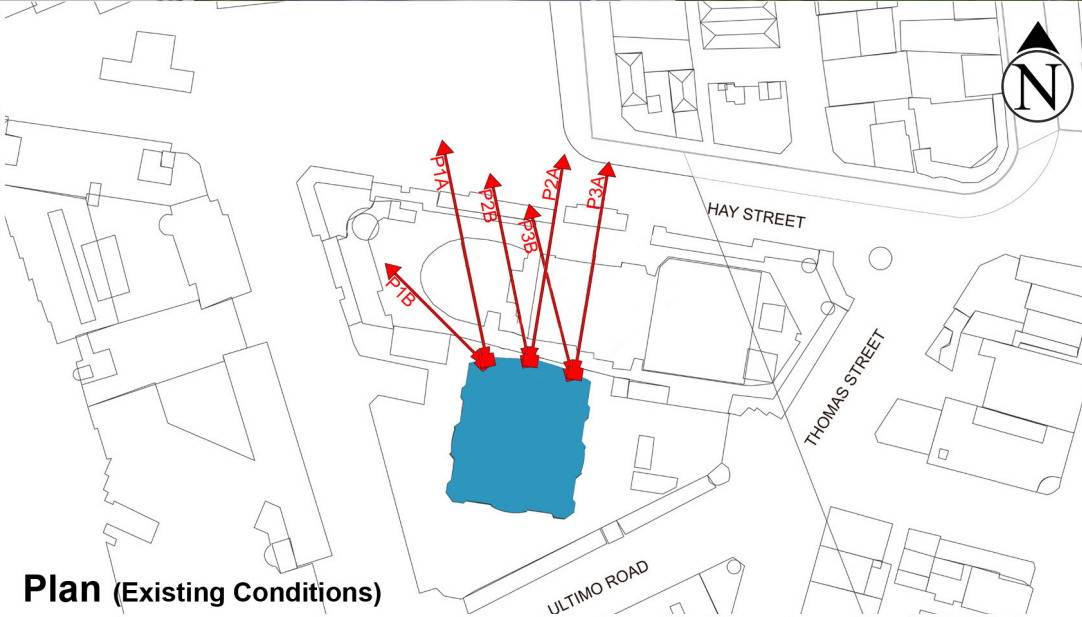
LEGEND:

44

Key Building

View Direction (50mm Camera)

Parameter Boxes in the Haymarket Precinct



Peak Apartments

Position: P3B

Level: 25

RL: 83.975 (Camera Height)

FOR INFORMATION ONLY

These images have been produced for view analysis purposes only.
Building forms shown include those approved which include State Significant Development Applications SSD 5752 (SSDA1 ICC Core Facilities), SSD 6010 (SSDA3 W2 Site - Student Accommodation), SSD 6013 (SSDA4 NW Plot Mixed Use), SSD 6011 (SSDA5 SW Plot Mixed Use), SSD 6116 (SSDA6 ICC Hotel) and SSD 6626 (SSDA7 NE Plot Mixed Use) and SSD 7133 (SSDA12 W1 Site - Student Accommodation). Building forms currently under assessment are also shown and include SSD 6633 (SSDA9 SE Plot Mixed Use) and SSD 7021 (SSDA10 North Plot (Darling Exchange) and Square.

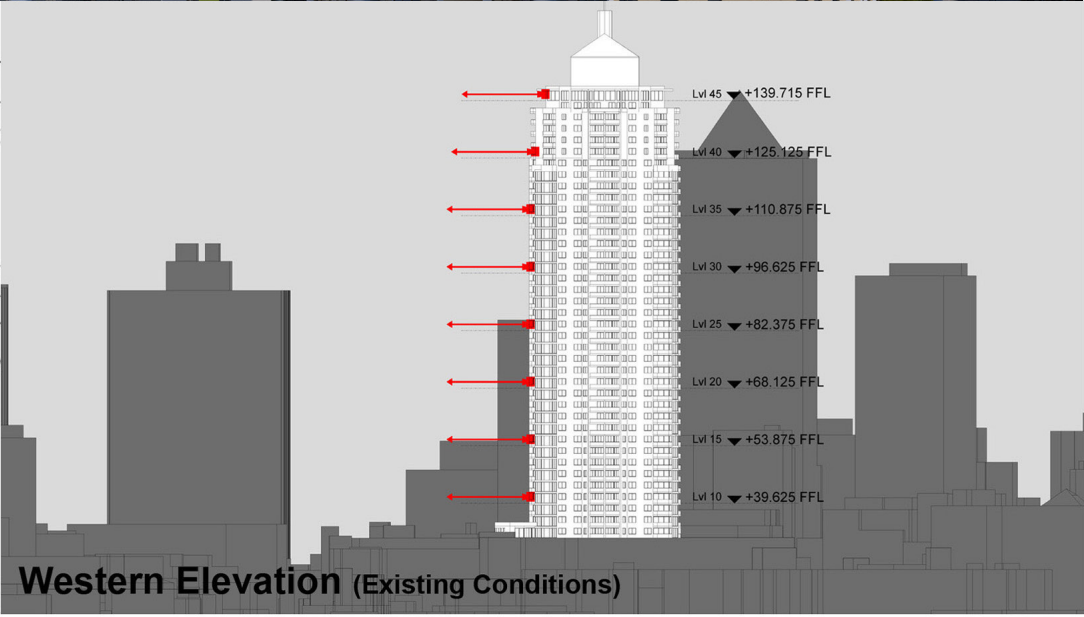
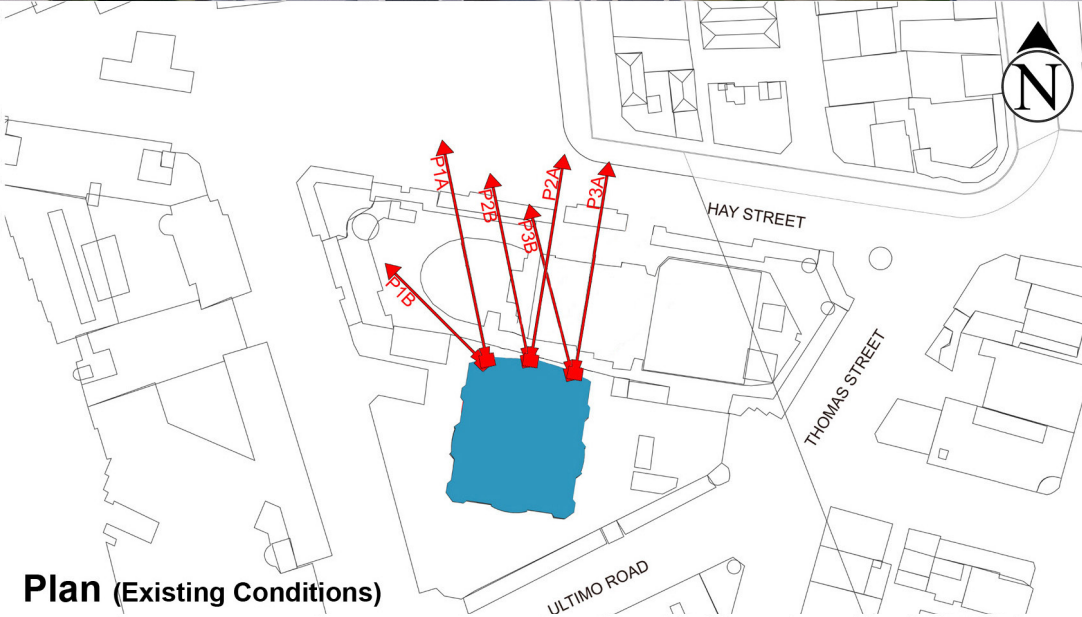
LEGEND:

45

Key Building

View Direction (50mm Camera)

Parameter Boxes in the Haymarket Precinct



Peak Apartments

Position: P3B

Level: 20

RL: 69.725 (Camera Height)

FOR INFORMATION ONLY

These images have been produced for view analysis purposes only.

Building forms shown include those approved which include State Significant Development Applications SSD 5752 (SSDA1 ICC Core Facilities), SSD 6010 (SSDA3 W2 Site - Student Accommodation), SSD 6013 (SSDA4 NW Plot Mixed Use), SSD 6011 (SSDA5 SW Plot Mixed Use), SSD 6116 (SSDA6 ICC Hotel) and SSD 6626 (SSDA7 NE Plot Mixed Use) and SSD 7133 (SSDA12 W1 Site - Student Accommodation). Building forms currently under assessment are also shown and include SSD 6633 (SSDA9 SE Plot Mixed Use) and SSD 7021 (SSDA10 North Plot (Darling Exchange) and Square.

LEGEND: 46

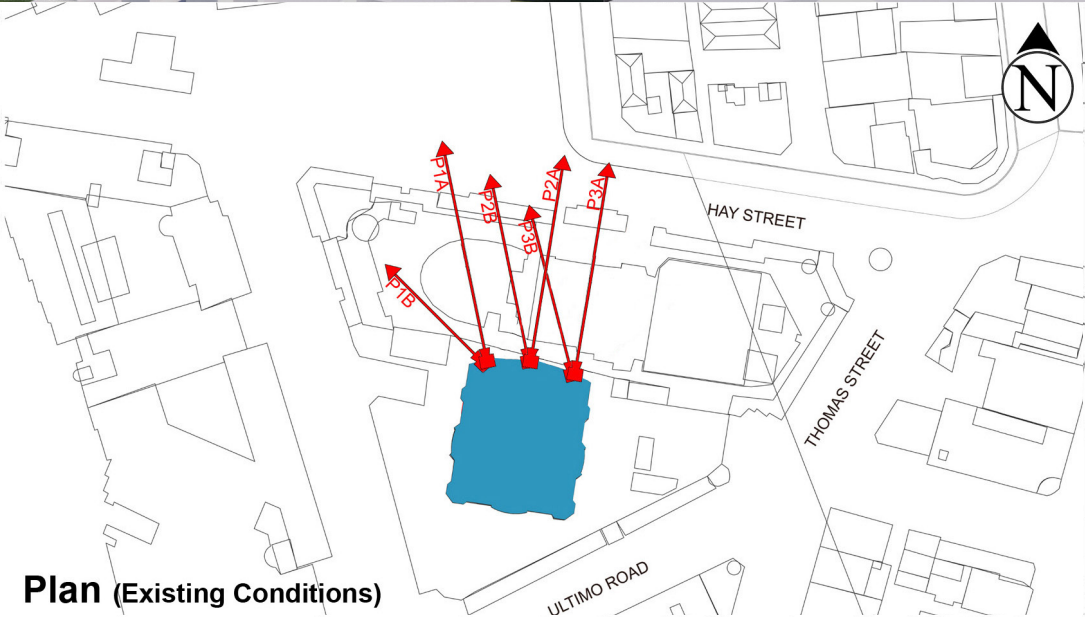
- Key Building
- View Direction (50mm Camera)
- Parameter Boxes in the Haymarket Precinct



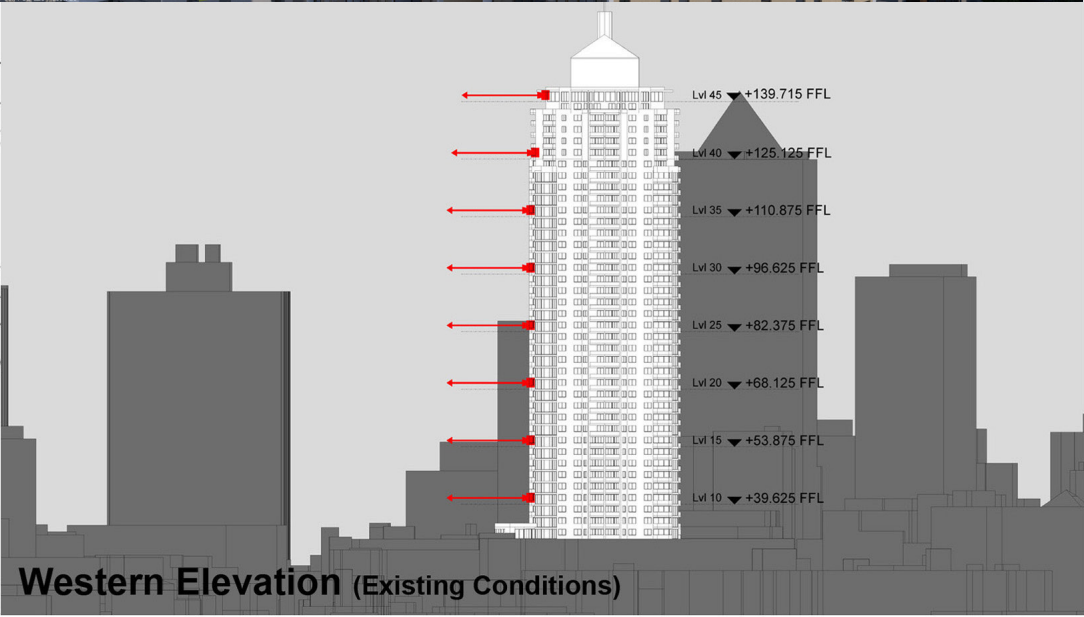
Existing View 2013 (Pre-demolition and construction activity)



Proposed View



Plan (Existing Conditions)



Western Elevation (Existing Conditions)

Peak Apartments

Position: P3B

Level: 15

RL: 55.475 (Camera Height)

FOR INFORMATION ONLY

These images have been produced for view analysis purposes only.

Building forms shown include those approved which include State Significant Development Applications SSD 5752 (SSDA1 ICC Core Facilities), SSD 6010 (SSDA3 W2 Site - Student Accommodation), SSD 6013 (SSDA4 NW Plot Mixed Use), SSD 6011 (SSDA5 SW Plot Mixed Use), SSD 6116 (SSDA6 ICC Hotel) and SSD 6626 (SSDA7 NE Plot Mixed Use) and SSD 7133 (SSDA12 W1 Site - Student Accommodation). Building forms currently under assessment are also shown and include SSD 6633 (SSDA9 SE Plot Mixed Use) and SSD 7021 (SSDA10 North Plot (Darling Exchange) and Square.

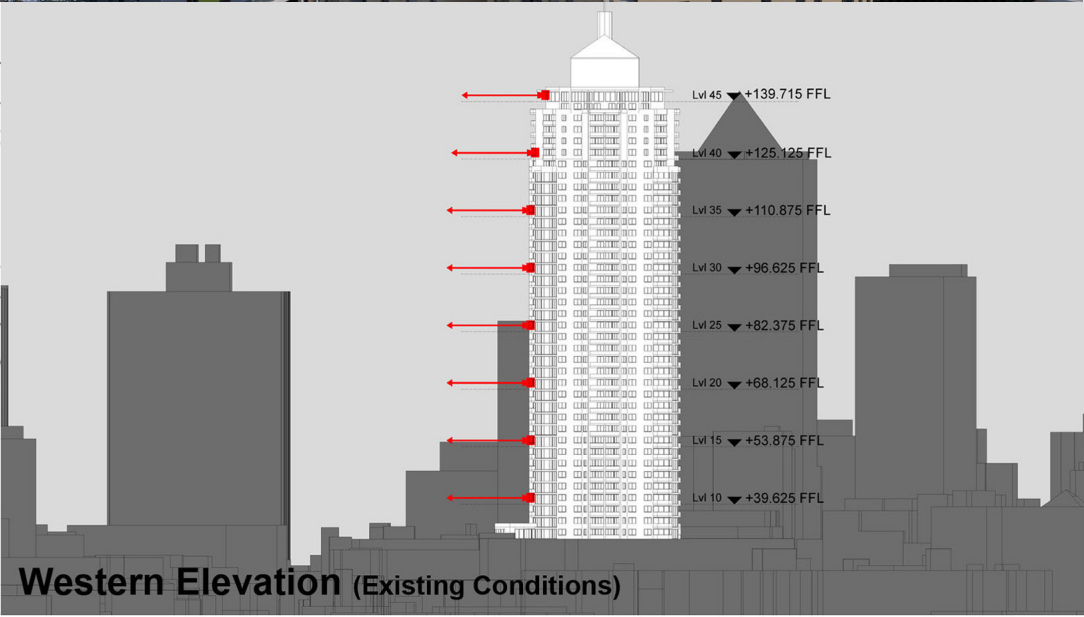
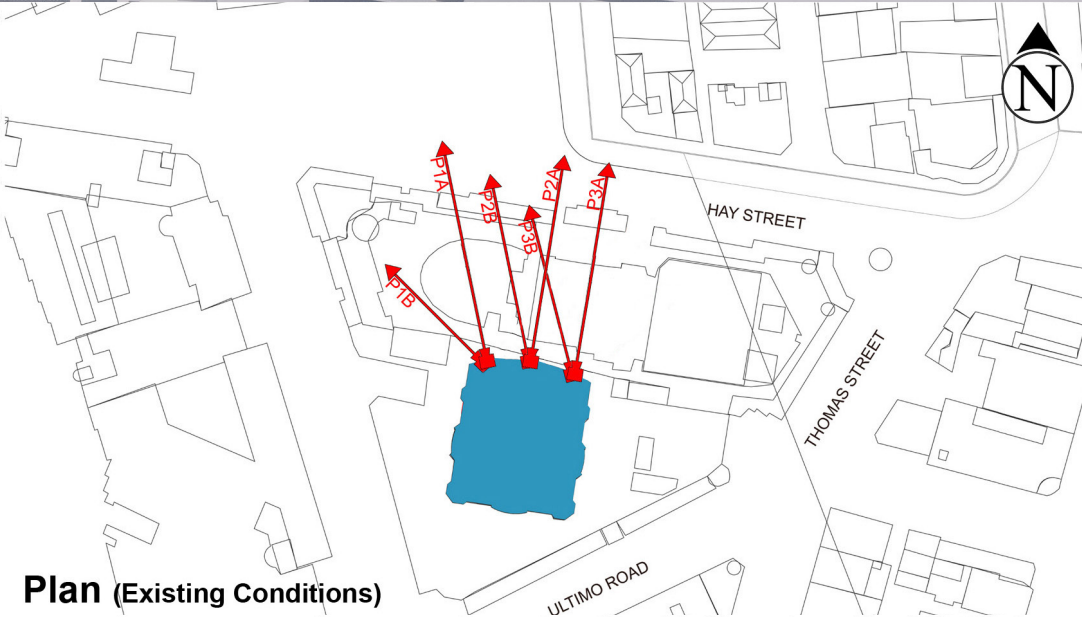
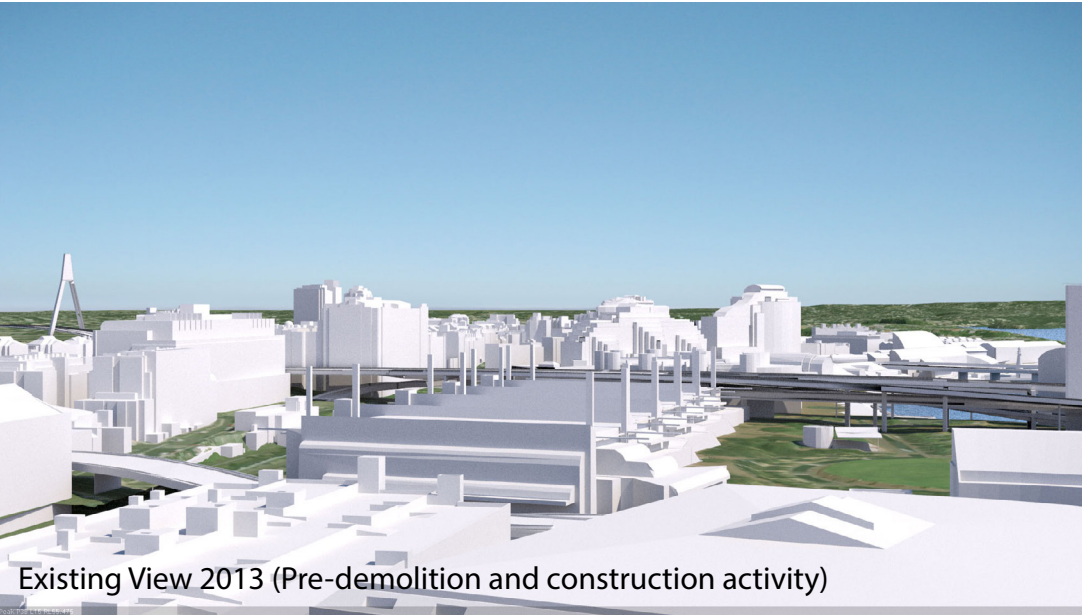
LEGEND:

47

Key Building

View Direction (50mm Camera)

Parameter Boxes in the Haymarket Precinct



Peak Apartments

Position: P3B

Level: 10

RL: 41.225 (Camera Height)

FOR INFORMATION ONLY

These images have been produced for view analysis purposes only.
Building forms shown include those approved which include State Significant Development Applications SSD 5752 (SSDA1 ICC Core Facilities), SSD 6010 (SSDA3 W2 Site - Student Accommodation), SSD 6013 (SSDA4 NW Plot Mixed Use), SSD 6011 (SSDA5 SW Plot Mixed Use), SSD 6116 (SSDA6 ICC Hotel) and SSD 6626 (SSDA7 NE Plot Mixed Use) and SSD 7133 (SSDA12 W1 Site - Student Accommodation). Building forms currently under assessment are also shown and include SSD 6633 (SSDA9 SE Plot Mixed Use) and SSD 7021 (SSDA10 North Plot (Darling Exchange) and Square.

LEGEND:

Key Building

View Direction (50mm Camera)

Parameter Boxes in the Haymarket Precinct

48

