

1 SITE PLAN
SCALE 1 : 750

NOTE:

"THIS ELEVATION/MONTAGE/MODEL INCLUDES DETAILS OF PROPOSED MODIFICATIONS TO SSD 4972 INCLUDING: SECTION 96(2) MODIFICATION 4 TO SSD 4972 TO PROVIDE TWO ADDITIONAL COMMERCIAL LEVELS TO THE SOUTHERN TOWER; AND SECTION 96(1A) MODIFICATION 5 TO SSD 4972 TO PROVIDE A 6TH LIFT TO THE EASTERN ELEVATION OF THE HOTEL LIFT LOBBY. THESE MODIFICATIONS ARE SUBJECT TO SEPEARATE ASSESSMENT AND DETERMINATION FROM THE MINISTER FOR PLANNING AND DO NOT FORM PART OF THE SUBJECT STATE SIGNIFICANT DEVELOPMENT APPLICATION."

SCALE IN METRES
SCALE 1:750 0 15m 30m

REV	DESCRIPTION	BY	DATE
1	DRAFT ISSUE	RJ	16/04/2015
2	DRAFT ISSUE	RJ	05/05/2015
3	DRAFT ISSUE	RJ	08/05/2015
4	DA ISSUE	RJ	27/05/2015

ARCHITECTS:

Cox Richardson
Level 6, 155 Clarence Street,
Sydney NSW 2000 Australia
T + 612 9267 9599 F + 612 9264 9599
Email : sydney@cox.com.au
The Cox Group Pty Ltd ACN 002 535 891



PROJECT MANAGER:



APPLICANT:

GL InvestmentCo Pty Ltd ATF GL No 1 Trust

**161 SUSSEX STREET REDEVELOPMENT
EXECUTIVE LOUNGE AND BAR**

Drawing Title:
SITE PLAN

Drawing Number:
A-DA2-0101

Scale:
As indicated @ A3

Revision:
04



LEGEND

- Lounge
- Servery
- Bar
- Foyer and ramp
- Restrooms
- Kitchen
- Services

XT

01
A-DA2-0404

01
A-DA2-0301

02
A-DA2-0302

01
A-DA2-0401

EFFL 45.10

EFFL 45.10

ADDITIONAL 6TH LIFT AS PART OF A
SEPERATE SECTION 96(1A)
MODIFICATION 5 APPLICATION SSD4972

FIRE STAIR
EXTENDED FROM
EXISTING LEVEL 09
BELOW

02
A-DA2-0301

NOTE:

"THIS ELEVATION/MONTAGE/MODEL INCLUDES DETAILS OF PROPOSED MODIFICATIONS TO SSD 4972 INCLUDING: SECTION 96(2) MODIFICATION 4 TO SSD 4972 TO PROVIDE TWO ADDITIONAL COMMERCIAL LEVELS TO THE SOUTHERN TOWER; AND SECTION 96(1A) MODIFICATION 5 TO SSD 4972 TO PROVIDE A 6TH LIFT TO THE EASTERN ELEVATION OF THE HOTEL LIFT LOBBY. THESE MODIFICATIONS ARE SUBJECT TO SEPEARATE ASSESSMENT AND DETERMINATION FROM THE MINISTER FOR PLANNING AND DO NOT FORM PART OF THE SUBJECT STATE SIGNIFICANT DEVELOPMENT APPLICATION."

SCALE IN METRES
SCALE 1:200
0 5 m 10 m

1

NORTH TOWER EXISTING HOTEL LEVEL 10

A-DA2-0302 SCALE 1:200

REV	DESCRIPTION	BY	DATE
1	DRAFT ISSUE	RJ	05/05/2015
2	DA ISSUE	RJ	27/05/2015

ARCHITECTS:

Cox Richardson

Level 6, 155 Clarence Street,
Sydney NSW 2000 Australia
T + 612 9267 9599 F + 612 9264 9599
Email : sydney@cox.com.au
The Cox Group Pty Ltd ACN 002 535 891

COX

PROJECT MANAGER:

savills

project
management

APPLICANT:

GL InvestmentCo Pty Ltd ATF GL No 1 Trust

161 SUSSEX STREET REDEVELOPMENT
EXECUTIVE LOUNGE AND BAR

Drawing Title:

EXISTING HOTEL LEVEL 10

Drawing Number:

A-DA2-0201

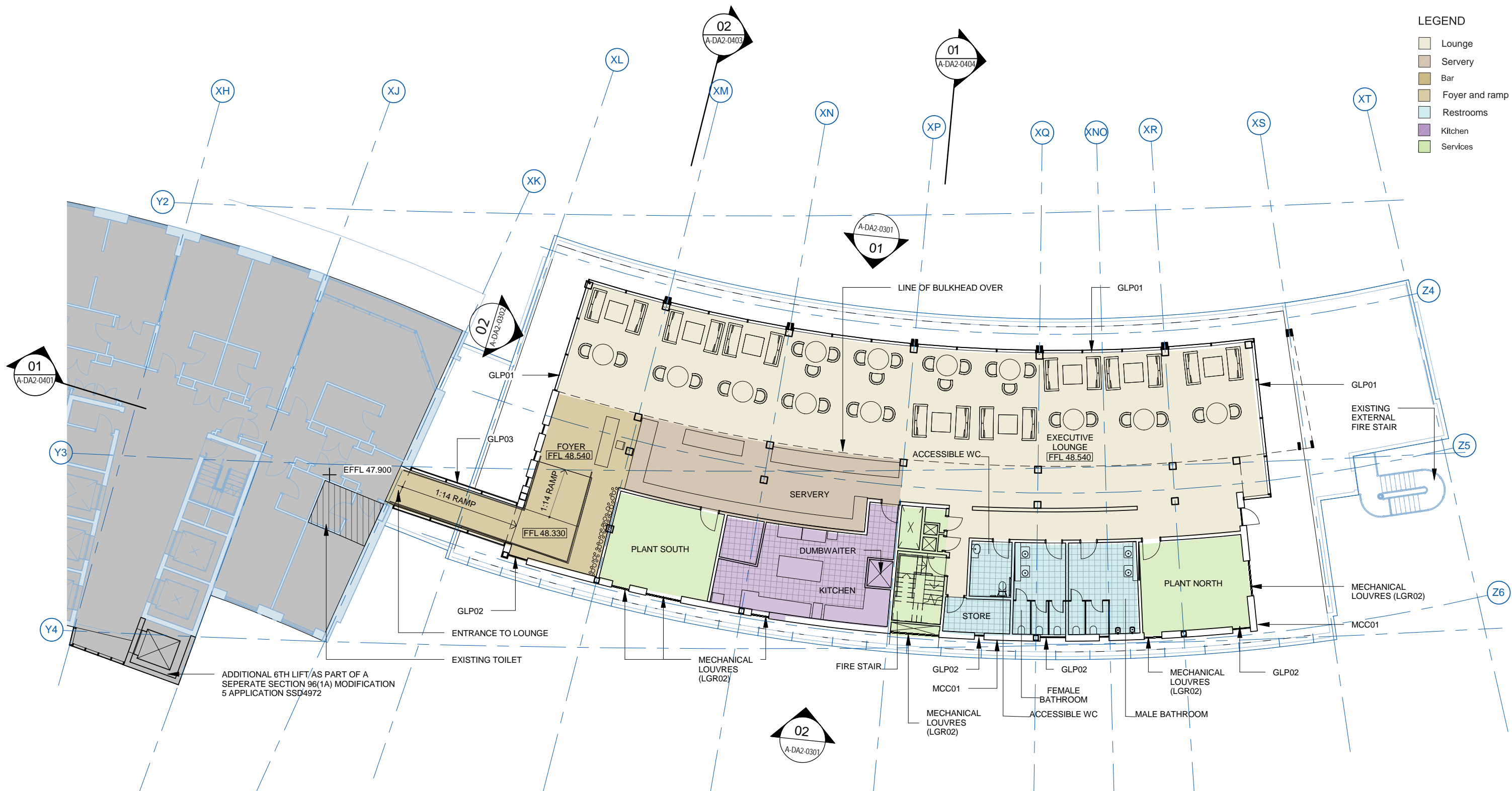
Scale:

As indicated @ A3

Revision:

02





- LEGEND
- Lounge
 - Servery
 - Bar
 - Foyer and ramp
 - Restrooms
 - Kitchen
 - Services

1 EXECUTIVE LOUNGE LEVEL 11
A-DA2-0301 SCALE 1:200

NOTE:
"THIS ELEVATION/MONTAGE/MODEL INCLUDES DETAILS OF PROPOSED MODIFICATIONS TO SSD 4972 INCLUDING: SECTION 96(2) MODIFICATION 4 TO SSD 4972 TO PROVIDE TWO ADDITIONAL COMMERCIAL LEVELS TO THE SOUTHERN TOWER; AND SECTION 96(1A) MODIFICATION 5 TO SSD 4972 TO PROVIDE A 6TH LIFT TO THE EASTERN ELEVATION OF THE HOTEL LIFT LOBBY. THESE MODIFICATIONS ARE SUBJECT TO SEPEARATE ASSESSMENT AND DETERMINATION FROM THE MINISTER FOR PLANNING AND DO NOT FORM PART OF THE SUBJECT STATE SIGNIFICANT DEVELOPMENT APPLICATION."



REV	DESCRIPTION	BY	DATE
1	DRAFT ISSUE	RJ	16/04/2015
2	DRAFT ISSUE	RJ	05/05/2015
3	DA ISSUE	RJ	27/05/2015
4	DA ISSUE	RJ	03/06/2015

ARCHITECTS:
Cox Richardson
Level 6, 155 Clarence Street,
Sydney NSW 2000 Australia
T + 612 9267 9599 F + 612 9264 9599
Email : sydney@cox.com.au
The Cox Group Pty Ltd ACN 002 535 891

PROJECT MANAGER:
COX
savills project management

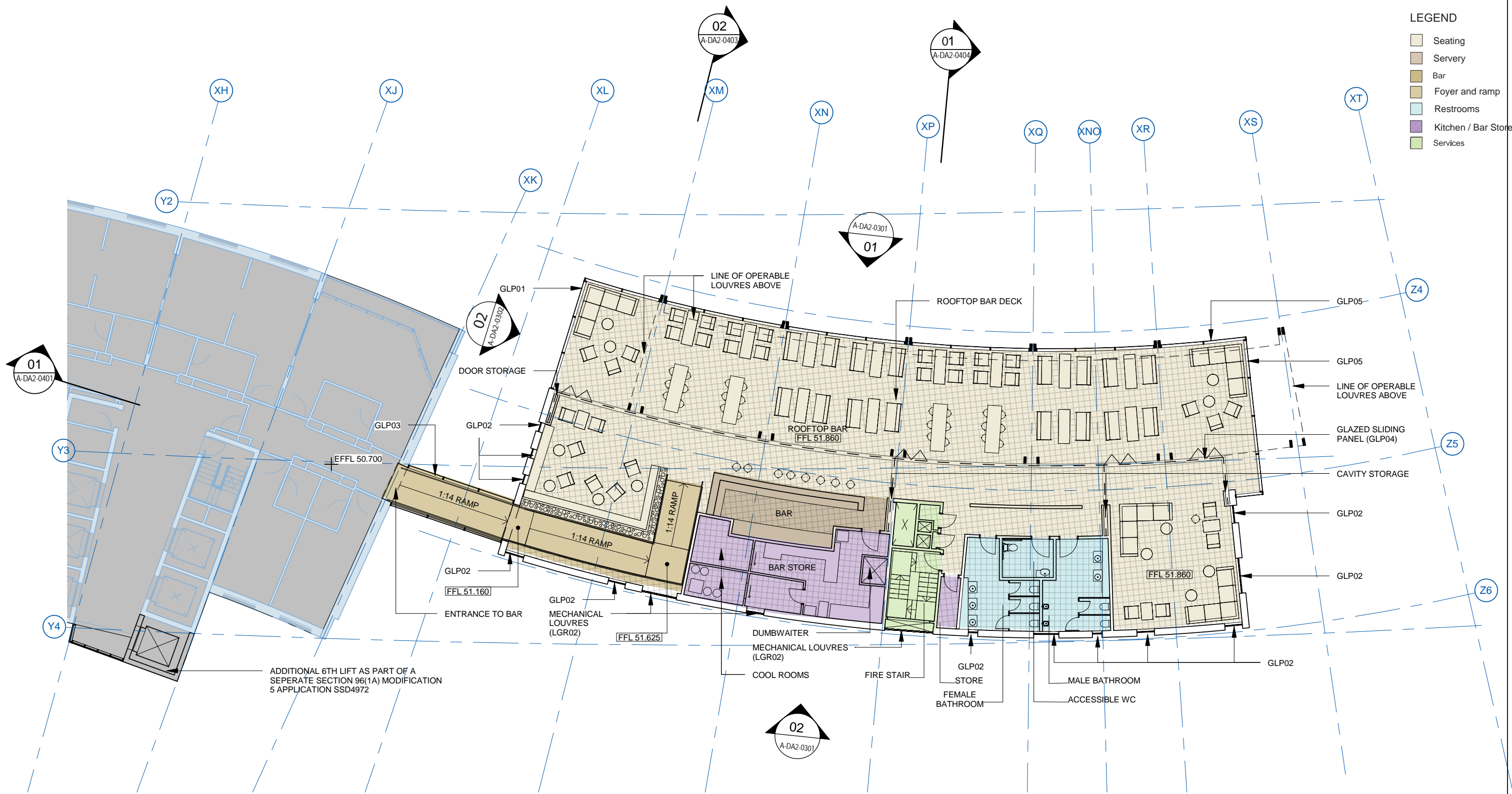
APPLICANT:
GL InvestmentCo Pty Ltd ATF GL No 1 Trust

161 SUSSEX STREET REDEVELOPMENT
EXECUTIVE LOUNGE AND BAR

Drawing Title:
EXECUTIVE LOUNGE - LEVEL 11
Drawing Number:
A-DA2-0202
Scale:
As indicated @ A3

Revision:
04





- LEGEND
- Seating
 - Servery
 - Bar
 - Foyer and ramp
 - Restrooms
 - Kitchen / Bar Store
 - Services

1 EXECUTIVE BAR LEVEL 12
A-DA2-0301 SCALE 1:200

NOTE:
"THIS ELEVATION/MONTAGE/MODEL INCLUDES DETAILS OF PROPOSED MODIFICATIONS TO SSD 4972 INCLUDING: SECTION 96(2) MODIFICATION 4 TO SSD 4972 TO PROVIDE TWO ADDITIONAL COMMERCIAL LEVELS TO THE SOUTHERN TOWER; AND SECTION 96(1A) MODIFICATION 5 TO SSD 4972 TO PROVIDE A 6TH LIFT TO THE EASTERN ELEVATION OF THE HOTEL LIFT LOBBY. THESE MODIFICATIONS ARE SUBJECT TO SEPEARATE ASSESSMENT AND DETERMINATION FROM THE MINISTER FOR PLANNING AND DO NOT FORM PART OF THE SUBJECT STATE SIGNIFICANT DEVELOPMENT APPLICATION."



REV	DESCRIPTION	BY	DATE
1	DRAFT ISSUE	RJ	16/04/2015
2	DRAFT ISSUE	RJ	05/05/2015
3	DA ISSUE	RJ	27/05/2015
4	DA ISSUE	RJ	03/06/2015

ARCHITECTS:
Cox Richardson
Level 6, 155 Clarence Street,
Sydney NSW 2000 Australia
T + 612 9267 9599 F + 612 9264 9599
Email : sydney@cox.com.au
The Cox Group Pty Ltd ACN 002 535 891

PROJECT MANAGER:
COX

APPLICANT:
savills project management

GL InvestmentCo Pty Ltd ATF GL No 1 Trust

161 SUSSEX STREET REDEVELOPMENT
EXECUTIVE LOUNGE AND BAR

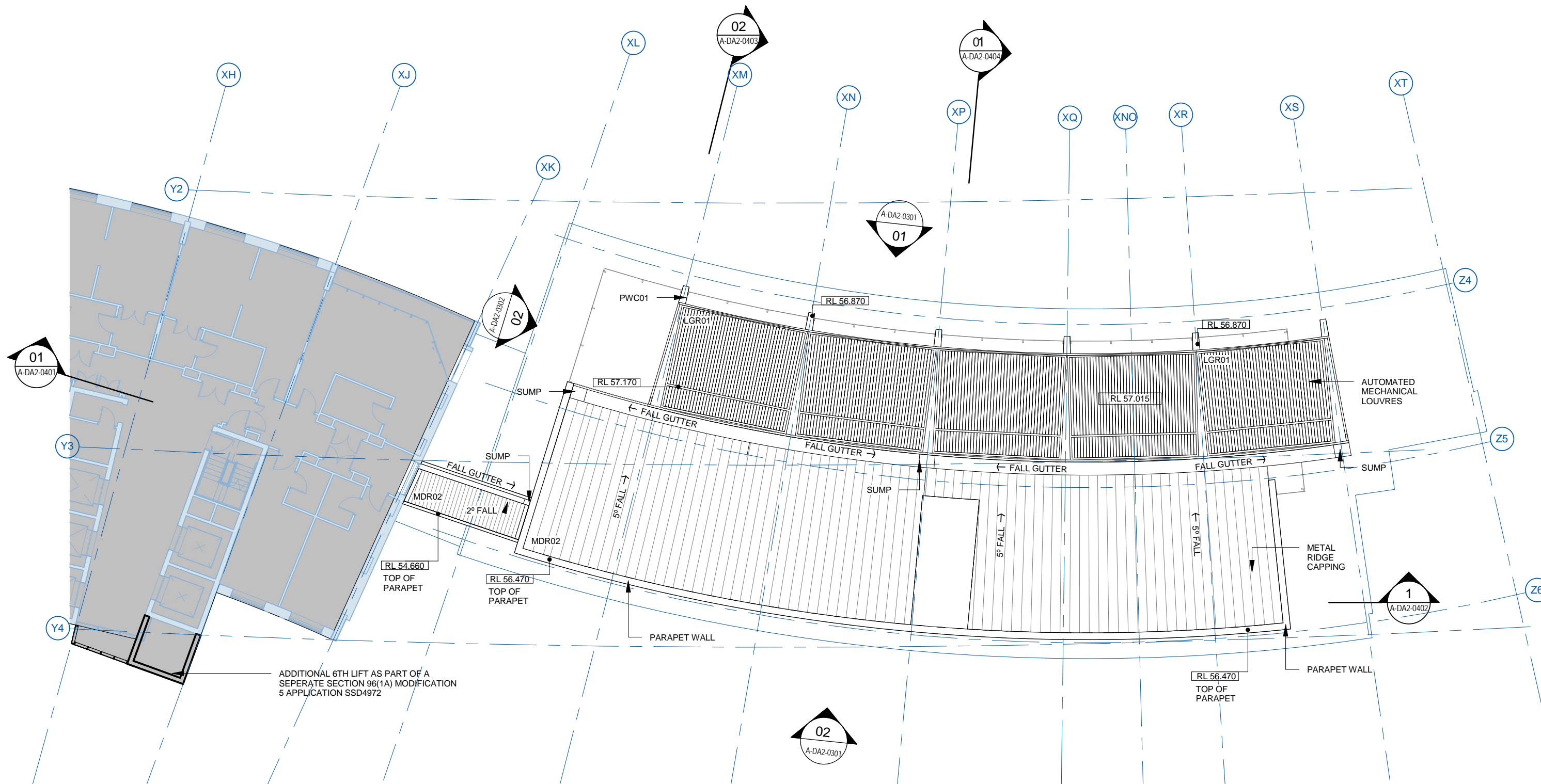
Drawing Title:
EXECUTIVE BAR - LEVEL 12

Drawing Number:
A-DA2-0203

Scale:
As indicated @ A3

Revision:
04





1 ROOF LEVEL
A-DA2-0301 SCALE 1 : 200

NOTE:
"THIS ELEVATION/MONTAGE/MODEL INCLUDES DETAILS OF PROPOSED MODIFICATIONS TO SSD 4972 INCLUDING: SECTION 96(2) MODIFICATION 4 TO SSD 4972 TO PROVIDE TWO ADDITIONAL COMMERCIAL LEVELS TO THE SOUTHERN TOWER; AND SECTION 96(1A) MODIFICATION 5 TO SSD 4972 TO PROVIDE A 6TH LIFT TO THE EASTERN ELEVATION OF THE HOTEL LIFT LOBBY. THESE MODIFICATIONS ARE SUBJECT TO SEPEARATE ASSESSMENT AND DETERMINATION FROM THE MINISTER FOR PLANNING AND DO NOT FORM PART OF THE SUBJECT STATE SIGNIFICANT DEVELOPMENT APPLICATION."



REV	DESCRIPTION	BY	DATE
1	DRAFT ISSUE	RJ	16/04/2015
2	DRAFT ISSUE	RJ	05/05/2015
3	DA ISSUE	RJ	27/05/2015
4	DA ISSUE	RJ	03/06/2015

ARCHITECTS:

Cox Richardson

Level 6, 155 Clarence Street,
Sydney NSW 2000 Australia
T + 612 9267 9599 F + 612 9264 9599
Email : sydney@cox.com.au
The Cox Group Pty Ltd ACN 002 535 891



PROJECT MANAGER:



project
management

APPLICANT:

GL InvestmentCo Pty Ltd ATF GL No 1 Trust

161 SUSSEX STREET REDEVELOPMENT
EXECUTIVE LOUNGE AND BAR

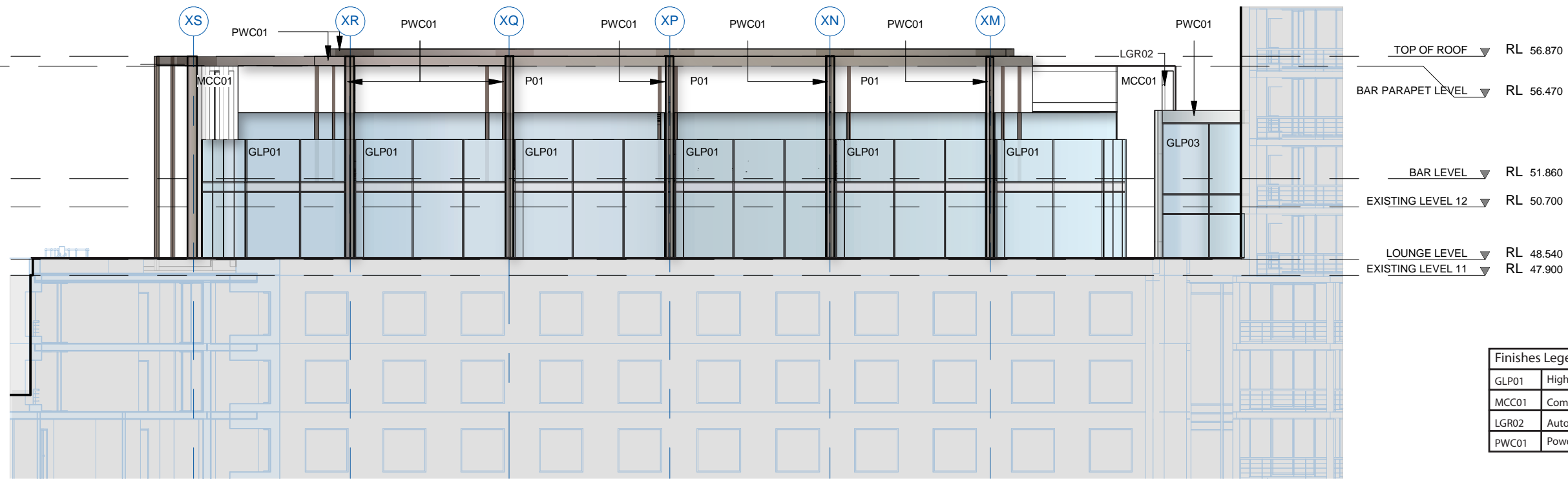
Drawing Title:
ROOF LEVEL

Drawing Number:
A-DA2-0204

Scale:
As indicated @ A3

Revision:
04





Finishes Legend	
GLP01	High Performance Glass - Clear
MCC01	Composite Metal cladding - White
LGR02	Automated Louvers - Powdercoat brown / black
PWC01	Powder Coated Steelwork - brown black

01 WEST ELEVATION
A-DA2-0201 SCALE 1 : 200



02 EAST ELEVATION
A-DA2-0201 SCALE 1 : 200

NOTE:

"THIS ELEVATION/MONTAGE/MODEL INCLUDES DETAILS OF PROPOSED MODIFICATIONS TO SSD 4972 INCLUDING: SECTION 96(2) MODIFICATION 4 TO SSD 4972 TO PROVIDE TWO ADDITIONAL COMMERCIAL LEVELS TO THE SOUTHERN TOWER; AND SECTION 96(1A) MODIFICATION 5 TO SSD 4972 TO PROVIDE A 6TH LIFT TO THE EASTERN ELEVATION OF THE HOTEL LIFT LOBBY. THESE MODIFICATIONS ARE SUBJECT TO SEPEARATE ASSESSMENT AND DETERMINATION FROM THE MINISTER FOR PLANNING AND DO NOT FORM PART OF THE SUBJECT STATE SIGNIFICANT DEVELOPMENT APPLICATION."

SCALE IN METRES
SCALE 1:200
0 5 m 10 m

REV	DESCRIPTION	BY	DATE
1	DRAFT ISSUE	RJ	16/04/2015
2	DRAFT ISSUE	RJ	05/05/2015
3	DA ISSUE	RJ	27/05/2015
4	DA ISSUE	RJ	03/06/2015

ARCHITECTS:

Cox Richardson
Level 6, 155 Clarence Street,
Sydney NSW 2000 Australia
T + 612 9267 9599 F + 612 9264 9599
Email : sydney@cox.com.au
The Cox Group Pty Ltd ACN 002 535 891



PROJECT MANAGER:



APPLICANT:

GL InvestmentCo Pty Ltd ATF GL No 1 Trust

161 SUSSEX STREET REDEVELOPMENT
EXECUTIVE LOUNGE AND BAR

Drawing Title:

EAST & WEST ELEVATIONS

Drawing Number:
A-DA2-0301

Revision:
04

Scale:
As indicated @ A3