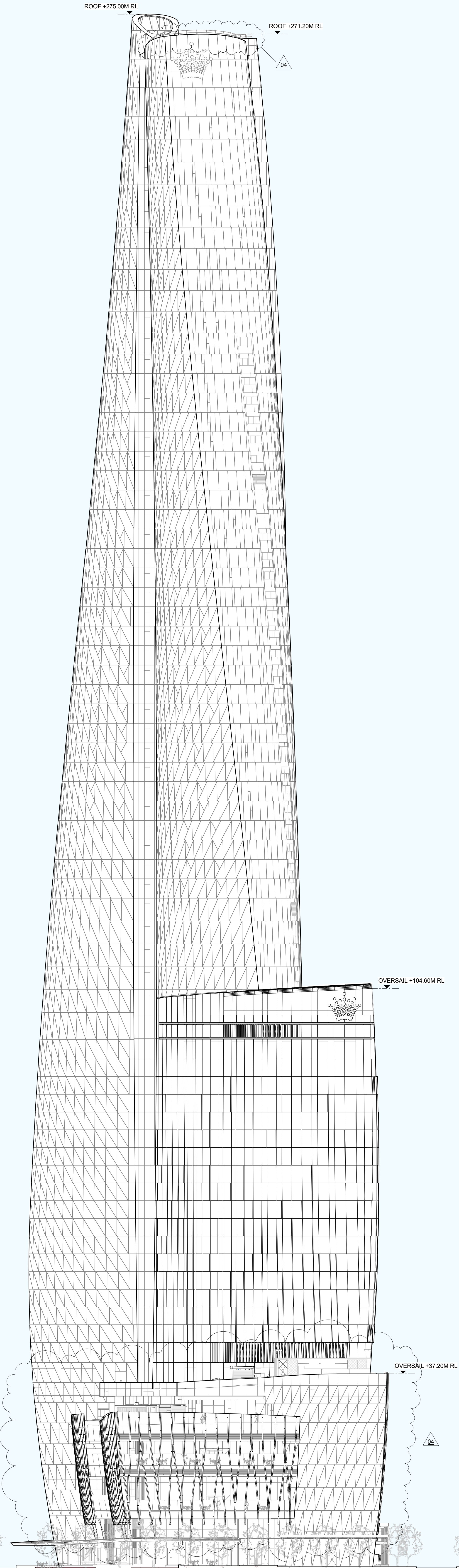


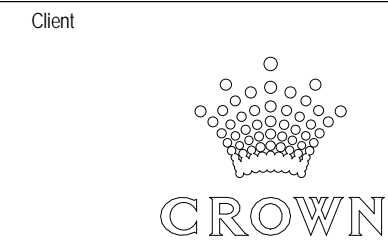
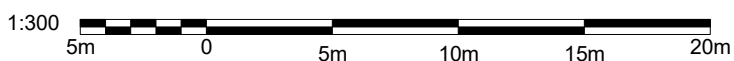
7.8	275.00 RL ... Roof	Plant
5	287.20 RL ... Level 71	BMU Plant
5	285.00 RL ... Level 70	Lifts Plant
5	282.20 RL ... Level 69	Sky Villa
4	267.20 RL ... Level 68	Sky Villa
4	263.20 RL ... Level 67	Super Villa
4	249.20 RL ... Level 66	BMU Plant
3.7	245.20 RL ... Level 65	Apartment
3.7	241.50 RL ... Level 64	Duplex
3.7	237.80 RL ... Level 63	1 Aptmt.
3.7	234.10 RL ... Level 62	1 Aptmt.
3.7	230.40 RL ... Level 61	2 Apts.
3.7	226.70 RL ... Level 60	2 Apts.
3.7	223.00 RL ... Level 59	2 Apts.
3.7	219.30 RL ... Level 58	2 Apts.
3.7	215.60 RL ... Level 57	2 Apts.
3.4	212.20 RL ... Level 56	3 Apts.
3.4	208.80 RL ... Level 55	3 Apts.
3.4	205.40 RL ... Level 54	3 Apts.
3.4	202.00 RL ... Level 53	3 Apts.
3.4	198.60 RL ... Level 52	3 Apts.
3.4	195.20 RL ... Level 51	3 Apts.
3.4	191.80 RL ... Level 50	Plant
3.4	188.40 RL ... Level 49	3 Apts.
3.4	185.00 RL ... Level 48	3 Apts.
3.4	181.60 RL ... Level 47	3 Apts.
3.4	178.20 RL ... Level 46	3 Apts.
3.4	174.80 RL ... Level 45	3 Apts.
3.4	171.40 RL ... Level 44	3 Apts.
3.4	168.00 RL ... Level 43	3 Apts.
3.4	164.60 RL ... Level 42	3 Apts.
3.4	161.20 RL ... Level 41	3 Apts.
3.4	157.80 RL ... Level 40	3 Apts.
3.4	154.40 RL ... Level 39	3 Apts.
3.4	151.00 RL ... Level 38	3 Apts.
3.4	147.60 RL ... Level 37	4 Apts.
3.4	144.20 RL ... Level 36	4 Apts.
3.4	140.80 RL ... Level 35	4 Apts.
3.4	137.40 RL ... Level 34	4 Apts.
3.4	134.00 RL ... Level 33	4 Apts.
3.4	130.60 RL ... Level 32	5 Villas
3.4	127.20 RL ... Level 31	1 King Room
3.4	123.80 RL ... Level 30	5 Villas
3.4	120.40 RL ... Level 29	1 King Room
4	116.40 RL ... Level 28	Villa Plant
4	112.40 RL ... Level 27	Villa Sky Gaming
4	108.40 RL ... Level 26	Villa Sky Gaming
4	104.40 RL ... Level 25	Villa Sky Gaming Plant
4	100.40 RL ... Level 24	Crystal Club
5	96.40 RL ... Level 23	Crystal Club Plant
3.1	92.30 RL ... Level 22	Hotel
3.1	89.20 RL ... Level 21	Hotel
3.1	86.10 RL ... Level 20	Hotel
3.1	83.00 RL ... Level 19	Hotel
3.1	79.90 RL ... Level 18	Hotel
3.1	76.80 RL ... Level 17	Hotel
3.1	73.70 RL ... Level 16	Hotel
3.1	70.60 RL ... Level 15	Hotel
3.1	67.50 RL ... Level 14	Hotel
3.1	64.40 RL ... Level 13	Hotel
3.1	61.30 RL ... Level 12	Hotel
3.1	58.20 RL ... Level 11	Hotel
3.1	55.10 RL ... Level 10	Hotel
3.1	52.00 RL ... Level 9	Hotel
3.1	48.90 RL ... Level 8	Hotel
3.1	45.80 RL ... Level 7	Hotel
3.1	42.70 RL ... Level 6	Hotel
4.1	38.60 RL ... Level 5	Plant/Exec Offices
4	34.60 RL ... Level 4	Gym/Salon/Spa
3.25	31.35 RL ... Mezz 3	Plant
3.2	28.70 RL ... Level 3	Function Room / All Day Dining / Pool
4.1	25.50 RL ... Mezz 2	Plant
3.8	21.40 RL ... Level 2	Restaurant / VIP Gaming
4.3	17.60 RL ... Mezz 1	Plant
3.75	13.30 RL ... Level 1	Restaurant / VIP Gaming
5.85	9.55 RL ... Mezz 0	Self Facilities
3.4	3.70 RL ... Ground	Retail / F&B
2.95	0.30 RL ... Mezz B1	Basement Mezzanine
2.95	-2.25 RL ... B1	Basement
2.95	-5.3 RL ... B2	Basement
2.95	-8.25 RL ... B3	Basement

04 SOUTH ELEVATION
ELEVATION - SCALE 1:300 @ A0



Rev	Date	Description	By	Chkd
00	17.03.2015	Planning Submission	AD	AE
01	04.03.2016	DAP Submission	RR	AE
02	21.12.2017	Section 96 Amendment	HE	WE
03	06.07.2018	Section 96 Amendment	WE	WE
04	30.01.2019	Section 96 Amendment	WE	WE

Do not Scale: Use figured dimensions only. All dimensions to be checked on site.
All drawings to be read in conjunction with the Engineers' drawings.
Any discrepancies between consultants drawings to be reported to the Architect before any work commences.
The contractor's attention is drawn to the Health & Safety matters identified in the Health & Safety plan as being priority hazardous.
These items should not be considered as a complete and final list.
The Work Package Contractor's normal Health & Safety obligations still apply when undertaking constructional operations both on and off site.



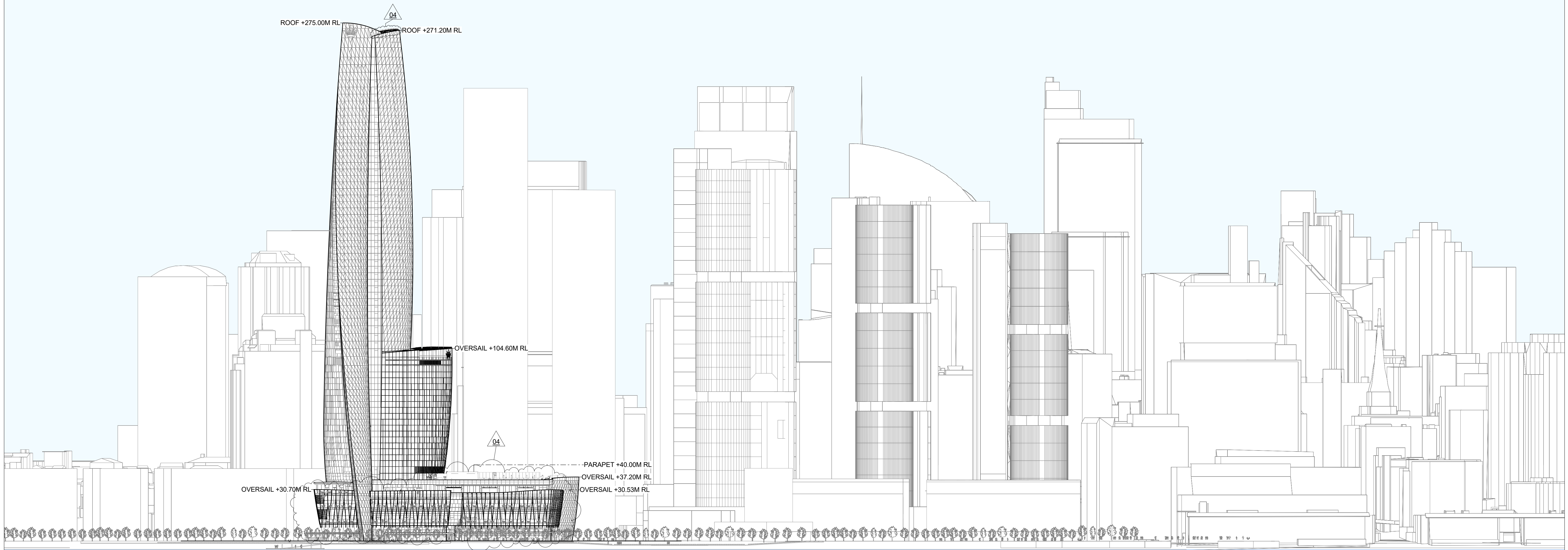
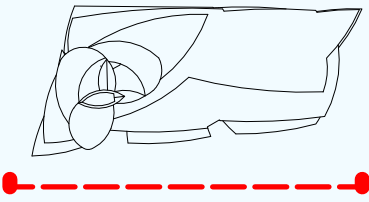
WilkinsonEyre
Wilkinson Eyre Architects
33 Bowling Green Lane, London
EC1R 0BU, United Kingdom
+44 (0) 20 7608 7900 T
+44 (0) 20 7608 7901 F
www.wilkinsonseyre.com

Project
915.11 Crown Hotel Sydney
Title
South Elevation

Scale @ A0
1:300

Drawing and CAD File Number:
00915 - E - 3003 - TP

Rev.
04

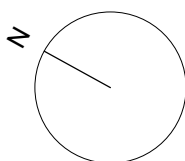


Rev	Date	Description	By	Chkd
00	17.03.2015	Planning Submission	AD	AK
01	04.03.2016	DAP Submission	RR	AK
02	01.12.2017	Section 96 Amendment	WE	WE
03	05.07.2018	Section 96 Amendment	WE	WE
04	30.01.2019	Section 96 Amendment	WE	WE

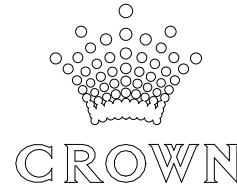
Do not Scale. Use figured dimensions only. All dimensions to be checked on site.

All drawings to be read in conjunction with the Engineers' drawings.
Any discrepancies between consultants drawings to be reported to the Architect before any work commences.
The Contractor's attention is drawn to the Health & Safety matters identified in the Health & Safety plan as being potentially hazardous.
These items should not be considered as a complete and final list.
The Work Package Contractor's normal Health & Safety obligations still apply when undertaking constructional operations both on and off site.

Issue Status



Client



WilkinsonEyre

Wilkinson Eyre Architects
33 Bowling Green Lane, London
EC1R 0BJ, United Kingdom

+44 (0) 20 7608 7900 T
+44 (0) 20 7608 7901 F
www.wilkinsonseyre.com

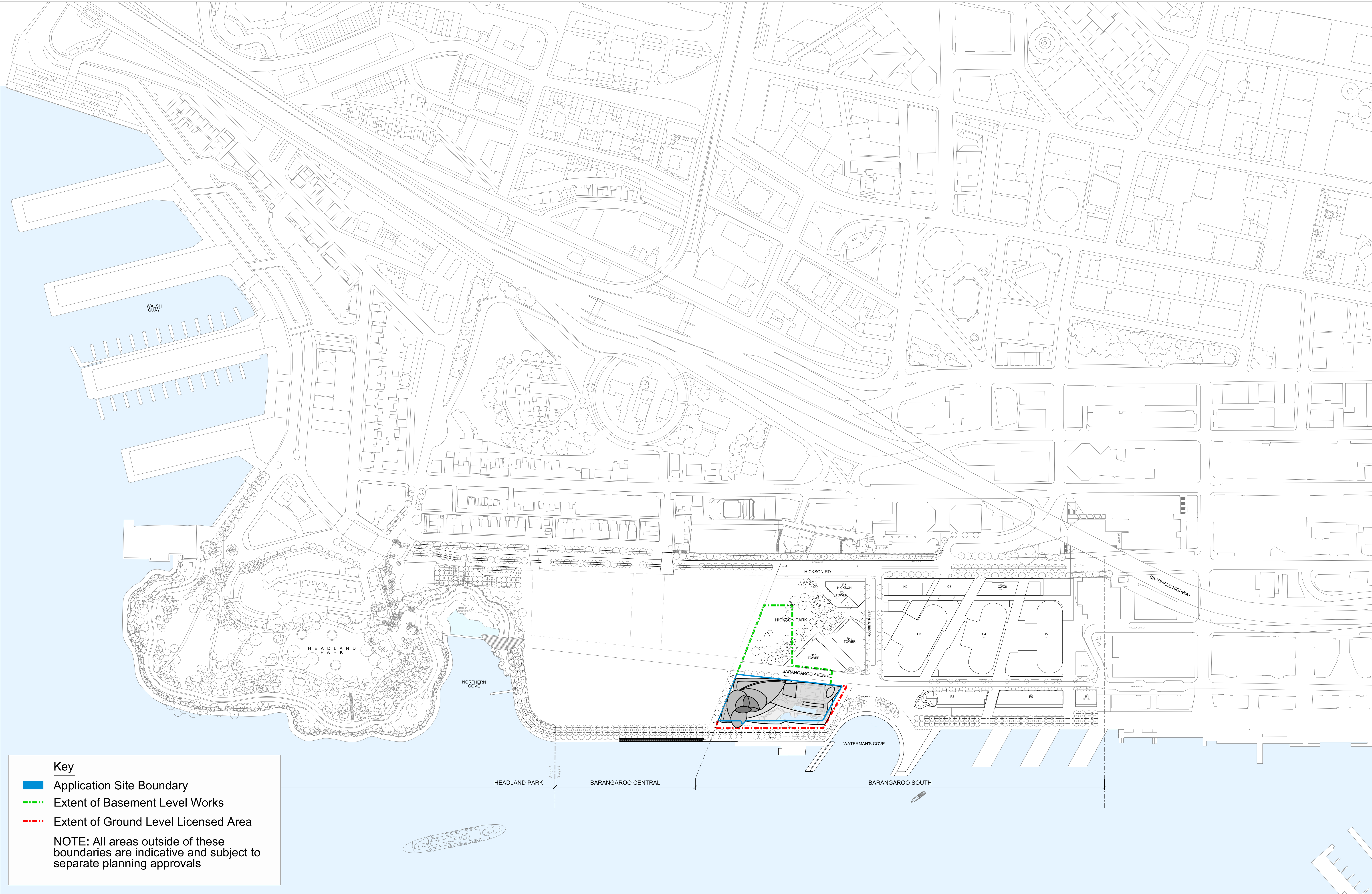
Project:
915.11 Crown Hotel Sydney

Title:
Context Elevation West

Scale @ A1:
1 : 1000

Drawing and CAD File Number:
00915 - E - 3004 - TP

Rev
04

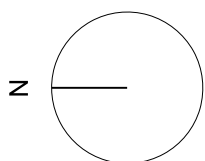


Rev	Date	Description	By	Chkd
00	17.03.2015	Planning Submission	TI	AK
01	04.03.2016	DAP Submission	AT	AK
02	01.12.2017	Section 96 Amendment	WE	WE

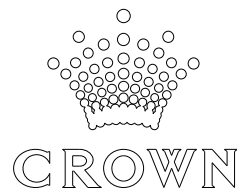
Do not Scale. Use figured dimensions only. All dimensions to be checked on site.

All drawings to be read in conjunction with the Engineers' drawings.
Any discrepancies between consultants drawings to be reported to the Architect before any work commences.
The Contractor's attention is drawn to the Health & Safety matters identified in the Health & Safety plan as being potentially hazardous.
These items should not be considered as a complete and final list.
The Work Package Contractor's normal Health & Safety obligations still apply when undertaking constructional operations both on and off site.

Issue Status



Client



WilkinsonEyre

Wilkinson Eyre Architects
33 Bowling Green Lane, London
EC1R 0BJ, United Kingdom

+44 (0) 20 7608 7900 T
+44 (0) 20 7608 7901 F
www.wilkinsonseyre.com

Project:
915.11 Crown Hotel Sydney
Title:
Context Plan

Scale @ A1:
1 : 2000

Drawing and CAD File Number:
00915 - P - 0100 - TP

Rev:
02

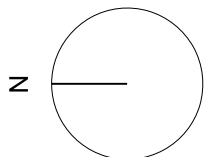


Rev	Date	Description	By	Chkd
00	17.03.2015	Planning Submission	TI	AK
01	04.03.2016	DAP Submission	AT	AK
02	01.12.2017	Section 96 Amendment	WE	WE

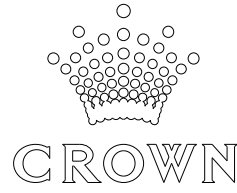
Do not Scale. Use figured dimensions only. All dimensions to be checked on site.

All drawings to be read in conjunction with the Engineers' drawings.
Any discrepancies between consultants drawings to be reported to the Architect before any work commences.
The Contractor's attention is drawn to the Health & Safety matters identified in the Health & Safety plan as being potentially hazardous.
These items should not be considered as a complete and final list.
The Work Package Contractor's normal Health & Safety obligations still apply when undertaking constructional operations both on and off site.

Issue Status



Client



WilkinsonEyre

Wilkinson Eyre Architects
33 Bowling Green Lane, London
EC1R 0BJ, United Kingdom

+44 (0) 20 7608 7900 T
+44 (0) 20 7608 7901 F
www.wilkinsonseyre.com

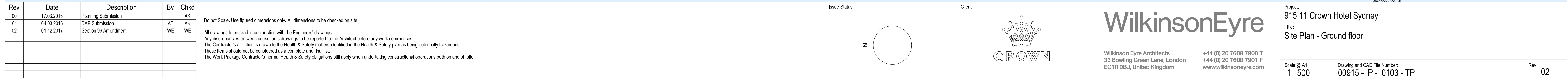
Project:
915.11 Crown Hotel Sydney

Title:
Site Plan - Roof Plan

Scale @ A1:
1 : 500

Drawing and CAD File Number:
00915 - P - 0102 - TP

Rev: 02





1 Basement Level 01 Mez West
1 : 200

Car Park Summary					Bicycle & Motorcycle Summary				
Level	Valet	Resi Parking	Self Parking	Total / Floor	Bicycles Staff	Bicycles Resi	Bicycles Visitor	Motorcycles	Total / Floor
0	0	0	0	0	0	0	37	0	37
B1	271	0	0	271	83	0	0	0	83
B2	0	157	41	198	0	87	0	0	87
B3	0	0	172	172	0	0	0	35	35
Total	271	157	213	641	83	87	37	35	242

- VALET

RESIDENTIAL PARKING

SELF PARKING
- BICYCLES RESIDENTS

MOTORCYCLES (MCB)

BICYCLES STAFF
- SMALL CARS

PLANT

BACK OF HOUSE
- RESIDENTIAL STORAGE

Rev	Date	Description	By	Chkd
00	17.03.2015	Planning Submission	AD	AK
01	01.12.2017	Section 96 Amendment	WE	WE

Do not Scale. Use figured dimensions only. All dimensions to be checked on site.

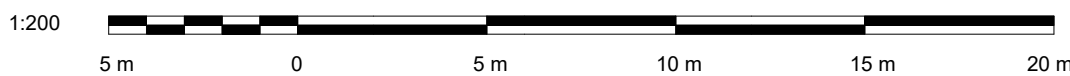
All drawings to be read in conjunction with the Engineers' drawings.

Any discrepancies between consultants drawings to be reported to the Architect before any work commences.

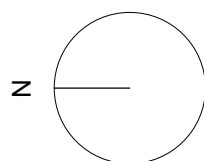
The Contractor's attention is drawn to the Health & Safety matters identified in the Health & Safety plan as being potentially hazardous.

These items should not be considered as a complete and final list.

The Work Package Contractor's normal Health & Safety obligations still apply when undertaking constructional operations both on and off site.



Issue Status



Client



WilkinsonEyre

Wilkinson Eyre Architects
33 Bowling Green Lane, London
EC1R 0BJ, United Kingdom

+44 (0) 20 7608 7900 T
+44 (0) 20 7608 7901 F
www.wilkinsonseyre.com

Project: 915.11 Crown Hotel Sydney
Title: Basement Level 1 Mez West

Scale @ A1:
As indicated

Drawing and CAD File Number:
00915 - P - 0510 - TP

Rev: 01

REFER TO DRAWING
P-0513-TP

SB CROWN EASTERN BOUNDARY

SC CROWN WESTERN BOUNDARY

S2 CROWN SOUTHERN BOUNDARY

1 Basement Level 1 West

1 : 200

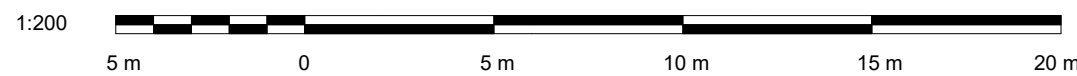
Car Park Summary					Bicycle & Motorcycle Summary				
Level	Valet	Resi Parking	Self Parking	Total / Floor	Bicycles Staff	Bicycles Resi	Bicycles Visitor	Motorcycles	Total / Floor
0	0	0	0	0	0	0	37	0	37
B1	271	0	0	271	83	0	0	0	83
B2	0	157	41	198	0	87	0	0	87
B3	0	0	172	172	0	0	0	35	35
Total	271	157	213	641	83	87	37	35	242

VALET	BICYCLES RESIDENTS	SMALL CARS	RESIDENTIAL STORAGE
RESIDENTIAL PARKING	MOTORCYCLES (MCB)	PLANT	
SELF PARKING	BICYCLES STAFF	BACK OF HOUSE	

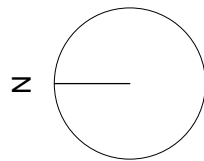
Rev	Date	Description	By	Chkd
00	17.03.2015	Planning Submission	AD	AK
01	01.12.2017	Section 96 Amendment	WE	WE

Do not Scale. Use figured dimensions only. All dimensions to be checked on site.

All drawings to be read in conjunction with the Engineer's drawings.
Any discrepancies between consultants drawings to be reported to the Architect before any work commences.
The Contractor's attention is drawn to the Health & Safety matters identified in the Health & Safety plan as being potentially hazardous.
These items should not be considered as a complete and final list.
The Work Package Contractor's normal Health & Safety obligations still apply when undertaking constructional operations both on and off site.



Issue Status



Client



WilkinsonEyre

Wilkinson Eyre Architects
33 Bowling Green Lane, London
EC1R 0BJ, United Kingdom

+44 (0) 20 7608 7900 T
+44 (0) 20 7608 7901 F
www.wilkinsoneyre.com

Project:
915.11 Crown Hotel Sydney
Title:
Basement Level 1 West

Scale @ A1:
As indicated

Drawing and CAD File Number:
00915 - P - 0512 - TP

Rev
01