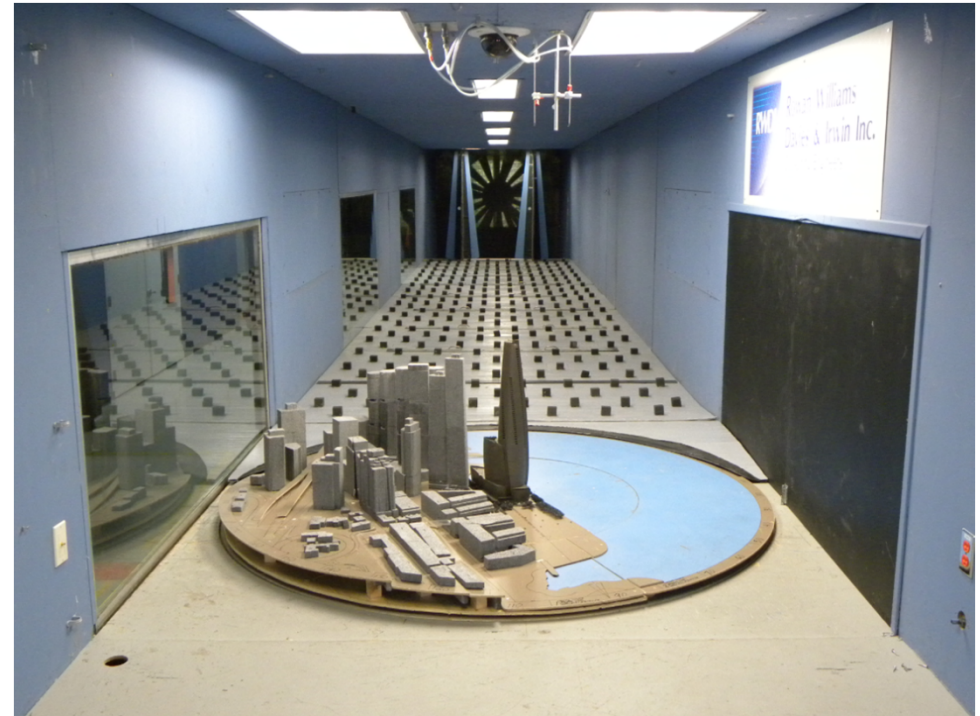


### 3. METHODOLOGY – WIND TUNNEL MODELING

The wind tunnel model represented the existing site and the proposed Crown Sydney Hotel Resort development, including all relevant surrounding buildings and topography within a 460 m radius of the study site (as shown in Figures 1 through 6). The mean speed profile and turbulence of the natural wind approaching the modeled area were also simulated in RWDI's boundary layer wind tunnel (Image 9).

The scale model was equipped with 93 specially designed wind speed sensors that were connected to the wind tunnel data acquisition system to record the mean and fluctuating components of wind speed at a full scale height of 1.5 m above grade in pedestrian areas throughout the study site. Wind speeds were measured for 36 wind directions, in 10 degree increments, starting from true north. The measurements at each sensor location were recorded in the form of ratios of local mean and gust speeds to the reference wind speed in the free stream above the model.

The results were then combined with long term meteorological data, recorded during the years 1986 through 1994 at the Sydney International Airport, in order to predict full scale wind conditions. The analysis was performed separately for the summer and winter seasons, the results of which are presented in this report. In addition, tabulated results are presented in Table 1 for wind comfort and safety criterions.



**Image 9**– Crown Sydney Hotel Resort test model in RWDI's Boundary Layer Wind Tunnel.

## 4. EXPLANATION OF CRITERIA

### 4.1 RWDI Criteria

The RWDI pedestrian wind criteria are used in the current study. These criteria have been developed by RWDI through research and consulting practice since 1974 (References 1 through 6). They have also been widely accepted by municipal authorities as well as by the building design and city planning community.

The perception of wind comfort among individuals is variable. Variations in age, individual health, clothing, and other human factors can change a particular response of an individual. The comfort limits used in this report represent an average for the total population. Changes in the project area, such as the construction or removal of buildings, can also affect the wind conditions experienced at the site. Finally, the prediction of wind speeds is a statistical procedure. The wind speeds reported are for the frequency of occurrence stated (for example, winds comfortable for walking 20% of the time). Higher wind speeds will occur but on a less frequent basis.

A few additional comments are provided below to further explain the wind criteria and their applications.

- Both mean and gust speeds can affect pedestrian's comfort and their combined effect is typically quantified by a Gust Equivalent Mean (GEM) speed, with a gust factor of 1.85 (References 1, 5, 7 and 8).
- A 20% exceedance is used in these criteria to determine the comfort category, which suggests that wind speeds would be comfortable for the corresponding activity at least 80% of the time or four out of five days.

- Only gust winds need to be considered in the wind safety criterion. These are usually rare events, but deserve special attention in city planning and building design due to their potential safety impact on pedestrians.

#### RWDI Pedestrian Wind Criteria

Comfort Category	GEM Speed (km/h)	Description
Sitting	≤ 10	Calm or light breezes desired for outdoor restaurants and seating areas where one can read a paper without having it blown away
Standing	≤ 14	Gentle breezes suitable for main building entrances and bus stops
Strolling	≤ 17	Moderate winds that would be appropriate for window shopping and strolling along a downtown street, plaza or park
Walking	≤ 20	Relatively high speeds that can be tolerated if one's objective is to walk, run or cycle without lingering
Uncomfortable	> 20	Strong winds of this magnitude are considered a nuisance for most activities, and wind mitigation is typically recommended
<b>Notes:</b> (1) Gust Equivalent Mean (GEM) speed = $\max(\text{mean speed}, \text{gust speed}/1.85)$ ; and (2) GEM speeds listed above are based on a seasonal exceedance of 20% of the time between 6:00 and 23:00.		
Safety Criterion	Gust Speed (km/h)	Description
Exceeded	> 90	Excessive gust speeds that can adversely affect a pedestrian's balance and footing. Wind mitigation is typically required.
<b>Note:</b> Based on an annual exceedance of 9 hours or 0.1% of the time for 24 hours a day.		

## 4.2 Lawson Criteria

The pedestrian wind comfort criteria used in this study were developed by T.V. Lawson at Bristol University. These criteria are well-established in the UK as the benchmark against which to assess the wind microclimate around buildings. The following categories are based on these criteria.

- **Pedestrian Sitting:** Sitting requires low wind speed where, for example, one could read a newspaper without having it blown away. Mean wind speeds of 4 m/s should not be exceeded for more than 5% of the time.
- **Pedestrian Standing:** Comfortable for standing for a short time of exposure. Mean wind speeds of 6 m/s should not be exceeded for more than 5% of the time.
- **Pedestrian Walking:** Wind speeds that would be acceptable for window shopping or strolling along a downtown street. Mean wind speeds of 8 m/s should not be exceeded more than 5% of the time.
- **Business Walking:** Wind conditions where the objective is to walk from A to B or for cycling. Mean wind speed of 10 m/s should not be exceeded more than 5% of the time.

Generally, wind conditions are considered acceptable if they produce conditions suitable for the intended activities in the area. Note that the Pedestrian Sitting category, which is the most sedentary activity for wind comfort, has the most stringent criteria.

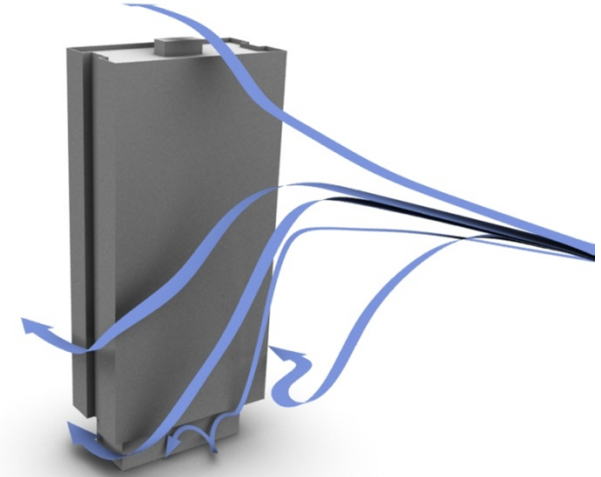
Gust wind speeds were also used to assess the pedestrian level wind conditions on and around the proposed development site. Gust speeds are determined by dividing the recorded wind speed history into ten equal intervals (each interval is approximately six minutes in duration at full scale), finding the maximum speed for each interval and then computing the average maximum. Gust wind speeds were divided by 1.85 to obtain the Gust Equivalent Mean (GEM) which was then compared to the criteria listed above.

The onset of distress, or pedestrian safety, is defined in terms of a mean or GEM wind speed that should not be exceeded more than once per year (Annually 0.022% and Seasonally 0.04%). For most areas, where the general public are allowed, a wind speed of 15 m/s should not be exceeded. In infrequently used pedestrian areas, a more lenient criterion of 20 m/s can be applied.

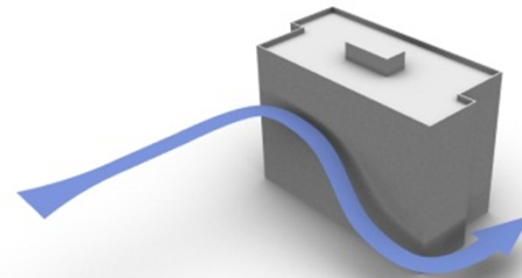
## 5. OVERVIEW

Wind speeds increase with elevation above the ground surface, and taller buildings intercept these faster winds and deflect them down to the pedestrian level. When winds accelerate around building corners at pedestrian level, a localized increase in the wind activity can be expected in that area. Conversely, if a building is surrounded by other buildings of equivalent height, it may be protected from the prevailing upper level winds, resulting in no significant changes to the local pedestrian level wind environment. The most effective way to assess potential pedestrian level wind impacts around a proposed new building is to conduct scale model tests in a wind tunnel.

The consideration of wind in planning outdoor activity areas is important since high winds in an area tend to deter pedestrian use. For example, winds should be light or relatively light in areas where people would be sitting, such as outdoor cafes or playgrounds. For bus stops and other locations where people would be standing, somewhat higher winds can be tolerated. For frequently used sidewalks, where people are primarily walking, stronger winds are acceptable. The actual effects of wind can range from pedestrian inconvenience, due to the blowing of dust and other loose material in a moderate breeze, to severe difficulty with walking due to the wind forces on the pedestrian.



**Image 10** – Deflected winds into pedestrian areas



**Image 11** – Corner acceleration of wind around structures



## 6. PREDICTED WIND CONDITIONS

Tables 1a through 2b, attached to this report, present the wind comfort and safety conditions for each of the test configurations. This information is presented graphically in Figures 3a through 11e. The RWDI and T.V. Lawson analyses produced very similar results. The RWDI conditions are referenced throughout this section, and the T.V. Lawson analysis is mentioned where a difference between the two criteria occurs.

### 6.1 Entrances and Covered Areas (Locations 1 through 17)

Wind speeds comfortable for sitting or standing are preferred in locations where passive activities are expected.

Winds comfortable for sitting or standing are generally expected near the base of the proposed Crown Sydney Hotel Resort. The only exception to these appropriate conditions is at the northwest tower corner, where winds are expected to be suitable for walking in the winter and uncomfortable during the summer (Location 9 in Figures 3a and 4a). Improved wind conditions are predicted with the addition of the Revised Landscaping Plan (Location 9 in Figures 3c, 3d, 3e, 4c, 4d and 4e).

Safe wind conditions are expected at all locations near the proposed development, except for the northwest building corner (Location 9 in Figure 5a). The addition of the Revised Landscaping Plan is predicted to result in safe conditions (Location 9 in Figures 5c through 5e).

### 6.2 Surrounding Grade Level Areas (Locations 18 through 72)

A comfort categorization of walking or strolling is considered appropriate for sidewalks and parking lots.

Due to the open nature of the site, the addition of any large building will result in increased wind speeds at corners and along the base. The overall massing of the proposed development is a positive feature relating to pedestrian level winds. The streamlined building shape reduces the effect of wind acceleration at building corners, and the presence of the podium provides a buffer to downwashing winds along the tower.

Wind conditions suitable for walking or better are expected at all locations surrounding the proposed Crown Sydney Hotel Resort during the summer and winter (Locations 18 through 72 in Figures 3a through 4e). These wind conditions are expected to be suitable for the given pedestrian activity intended.

During the summer, however, winds from the north and north-northeast may result in elevated wind conditions at the northwest building corner. The wind safety criterion is predicted to be met at most locations around the proposed development, aside from the area to the northwest (Location 72 in Figure 5a, and multiple locations around Location 72 in Figure 11a). The addition of the Revised Landscaping Plan is predicted to result in safe conditions according to the RWDI safety criterion (Figures 5c through 5d). In relation to the Lawson safety criterion, generally safe conditions are predicted, with only borderline unsafe conditions expected at the northwest building corner (Table 2b and Figures 11c through 11e).

### 6.3 Above Grade Areas (Locations 73 through 93)

Wind speeds comfortable for sitting or standing are preferred in locations where passive activities are expected.

Winds comfortable for strolling or better are expected at amenity areas on the proposed Crown Sydney Hotel Resort (Locations 73 through 93). These wind conditions may be suitable, given the windy climate in Sydney.

The wind safety criterion is expected to be met at all locations above grade on the proposed development, except for the area immediately north of the pool on the Level 24 pool deck (Location 92).

## 7. MITIGATION STRATEGY

The following measures for wind control have been adopted by the design team resulting in acceptable and safe conditions:

- Inclusion of landscaping as described in the Revised Landscaping Plan - provided in Appendix A and tested in Configuration C - is predicted to improve the wind conditions to appropriate levels;
- The addition of horizontal blinds and glass blades at various locations along the west side of the building would further improve local wind comfort conditions (Images 12 and 13);
- In RWDI's opinion the overhead vegetated trellises at the Level 24 pool deck (Image 14) would have similar wind effect to those tested in the wind tunnel. These trellises would improve local wind comfort conditions.  
**Note** – Access to the area immediately north of the pool (Location 92) should be restricted on windy days during the winter, as unsafe wind conditions are expected.



Image 12 – Rendering of horizontal blinds

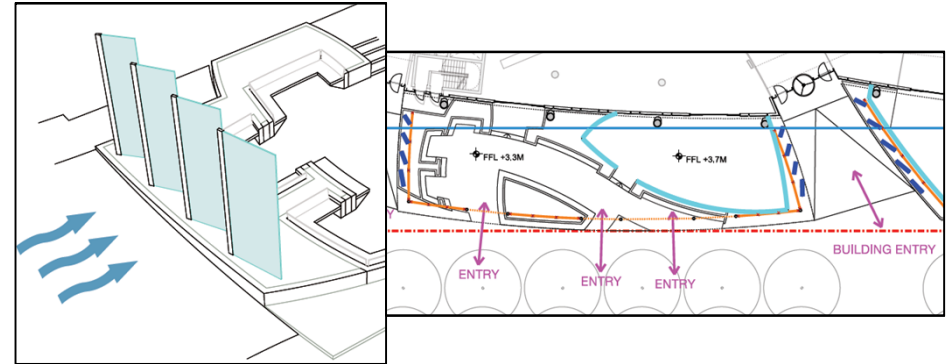


Image 13 – Schematic of glass blades (left) and location (right)



Image 14 – Overhead vegetated trellises at the Level 24 pool deck

## 8. SUMMARY OF WIND CONDITIONS

The wind conditions around the proposed Crown Sydney Hotel Resort may be summarized as follows:

- Appropriate wind conditions are expected surrounding the site with the addition of the proposed development;
- Summer winds from the Northeast and North-Northeast result in some elevated wind conditions at the site. These winds are somewhat mitigated by the curved shape of the building façade, which is a positive design feature, and is further mitigated to suitable conditions through the use of the Revised Landscaping Plan. The effectiveness of this plan is demonstrated in this report. Additional improvement in wind conditions in the dining area is expected as a result of the proposed horizontal blinds and glass blades along the west side of the building;
- All grade level locations are expected to pass the wind criterion used to assess pedestrian wind safety, with the inclusion of the Revised Landscaping Plan;
- Appropriate wind comfort conditions are expected at the Level 24 pool deck in the summer and winter. An exceedance of the wind safety criterion is expected at the area immediately north of the pool. However, with the incorporation of overhead trellises as discussed in the report, conditions that are acceptable and manageable by operational means such as restricting access are predicted.

## 9. APPLICABILITY

The wind conditions presented in this report pertain to the proposed Crown Sydney Hotel Resort and site as modeled using the architectural design drawings provided by the design team. Should there be any design changes that deviate from this list of drawings, the wind conditions presented may change. Therefore, if changes in the design are made, it is recommended that RWDI be contacted and requested to review their potential effects on wind conditions.

## 10. REFERENCES

- 1) ASCE Task Committee on Outdoor Human Comfort (2004). *Outdoor Human Comfort and Its Assessment*, 68 pages, American Society of Civil Engineers, Reston, Virginia, USA.
- 2) Williams, C.J., Hunter, M.A. and Waechter, W.F. (1990). "Criteria for Assessing the Pedestrian Wind Environment," *Journal of Wind Engineering and Industrial Aerodynamics*, Vol.36, pp.811-815.
- 3) Williams, C.J., Soligo M.J. and Cote, J. (1992). "A Discussion of the Components for a Comprehensive Pedestrian Level Comfort Criteria," *Journal of Wind Engineering and Industrial Aerodynamics*, Vol.41-44, pp.2389-2390.
- 4) Soligo, M.J., Irwin, P.A., and Williams, C.J. (1993). "Pedestrian Comfort Including Wind and Thermal Effects," *Third Asia-Pacific Symposium on Wind Engineering*, Hong Kong.
- 5) Soligo, M.J., Irwin, P.A., Williams, C.J. and Schuyler, G.D. (1998). "A Comprehensive Assessment of Pedestrian Comfort Including Thermal Effects," *Journal of Wind Engineering and Industrial Aerodynamics*, Vol.77&78, pp.753-766.
- 6) Williams, C.J., Wu, H., Waechter, W.F. and Baker, H.A. (1999). "Experiences with Remedial Solutions to Control Pedestrian Wind Problems," *Tenth International Conference on Wind Engineering*, Copenhagen, Denmark.
- 7) Lawson, T.V. (1973). "Wind Environment of Buildings: A Logical Approach to the Establishment of Criteria", *Report No. TVL 7321*, Department of Aeronautic Engineering, University of Bristol, Bristol, England.
- 8) Durgin, F. H. (1997). "Pedestrian Level Wind Criteria Using the Equivalent average", *Journal of Wind Engineering and Industrial Aerodynamics*, Vol. 66, pp. 215-226.

# APPENDIX A





# TABLES

**Table 1a: Pedestrian Wind Comfort and Safety Conditions (RWDI Criteria)**

Location	Configuration	Wind Comfort (20% Seasonal Exceedance)				Wind Safety (0.1% Exceedance)	
		Summer		Winter		Annual	
		Speed (km/h)	Rating	Speed (km/h)	Rating	Speed (km/h)	Rating
1	A	8	Sitting	7	Sitting	36	Pass
	B	7	Sitting	6	Sitting	33	Pass
2	A	10	Sitting	8	Sitting	49	Pass
	B	10	Sitting	8	Sitting	48	Pass
3	A	14	Standing	12	Standing	68	Pass
	B	13	Standing	12	Standing	66	Pass
4	A	11	Standing	9	Sitting	48	Pass
	B	10	Sitting	8	Sitting	43	Pass
5	A	9	Sitting	8	Sitting	40	Pass
	B	7	Sitting	7	Sitting	37	Pass
6	A	10	Sitting	10	Sitting	50	Pass
	B	9	Sitting	9	Sitting	48	Pass
7	A	10	Sitting	9	Sitting	48	Pass
	B	10	Sitting	9	Sitting	48	Pass
8	A	9	Sitting	12	Standing	70	Pass
	B	9	Sitting	12	Standing	69	Pass
9	A	21	Uncomfortable	20	Walking	94	Exceeded
	B	20	Walking	19	Walking	89	Pass
10	A	12	Standing	9	Sitting	67	Pass
	B	12	Standing	8	Sitting	72	Pass
11	A	10	Sitting	9	Sitting	50	Pass
	B	7	Sitting	7	Sitting	40	Pass
12	A	9	Sitting	9	Sitting	52	Pass
	B	9	Sitting	8	Sitting	41	Pass
13	A	11	Standing	11	Standing	63	Pass
	B	11	Standing	10	Sitting	54	Pass
14	A	13	Standing	14	Standing	86	Pass
	B	11	Standing	10	Sitting	53	Pass
15	A	10	Sitting	12	Standing	82	Pass
	B	9	Sitting	8	Sitting	48	Pass

<b>Seasons</b> Summer = November to April Winter = May to October	<b>Hours</b> 6:00 to 23:00 for Comfort 0:00 to 23:00 for Safety	<b>Wind Comfort Category</b> (20% Seasonal Exceedance)  ≤ 10 km/h      Sitting 11 to 14        Standing 15 to 17        Strolling 18 to 20        Walking > 20 km/h      Uncomfortable	<b>Wind Safety Category</b> (0.1% Annual Exceedance)  ≤ 90 km/h      Pass > 90 km/h     Exceeded
---	---	---	--

<b>Configuration</b> A = without the proposed landscaping plan B = with the proposed landscaping plan
---

**Table 1a: Pedestrian Wind Comfort and Safety Conditions (RWDI Criteria)**

Location	Configuration	Wind Comfort (20% Seasonal Exceedance)				Wind Safety (0.1% Exceedance)	
		Summer		Winter		Annual	
		Speed (km/h)	Rating	Speed (km/h)	Rating	Speed (km/h)	Rating
16	A	14	Standing	13	Standing	76	Pass
	B	14	Standing	14	Standing	78	Pass
17	A	11	Standing	10	Sitting	54	Pass
	B	8	Sitting	7	Sitting	43	Pass
18	A	16	Strolling	13	Standing	67	Pass
	B	14	Standing	11	Standing	58	Pass
19	A	10	Sitting	9	Sitting	44	Pass
	B	9	Sitting	8	Sitting	37	Pass
20	A	11	Standing	9	Sitting	47	Pass
	B	10	Sitting	8	Sitting	42	Pass
21	A	12	Standing	11	Standing	57	Pass
	B	12	Standing	10	Sitting	52	Pass
22	A	13	Standing	12	Standing	59	Pass
	B	12	Standing	11	Standing	51	Pass
23	A	14	Standing	12	Standing	61	Pass
	B	13	Standing	11	Standing	55	Pass
24	A	15	Strolling	12	Standing	61	Pass
	B	12	Standing	10	Sitting	49	Pass
25	A	13	Standing	11	Standing	60	Pass
	B	9	Sitting	9	Sitting	47	Pass
26	A	14	Standing	13	Standing	65	Pass
	B	11	Standing	10	Sitting	50	Pass
27	A	13	Standing	11	Standing	60	Pass
	B	9	Sitting	9	Sitting	46	Pass
28	A	13	Standing	12	Standing	59	Pass
	B	10	Sitting	10	Sitting	49	Pass
29	A	14	Standing	13	Standing	62	Pass
	B	11	Standing	11	Standing	50	Pass
30	A	12	Standing	12	Standing	66	Pass
	B	11	Standing	11	Standing	55	Pass

<b>Seasons</b> Summer = November to April Winter = May to October	<b>Hours</b> 6:00 to 23:00 for Comfort 0:00 to 23:00 for Safety	<b>Wind Comfort Category</b> (20% Seasonal Exceedance)  ≤ 10 km/h      Sitting 11 to 14        Standing 15 to 17        Strolling 18 to 20        Walking > 20 km/h      Uncomfortable	<b>Wind Safety Category</b> (0.1% Annual Exceedance)  ≤ 90 km/h      Pass > 90 km/h     Exceeded
---	---	---	--

<b>Configuration</b> A = without the proposed landscaping plan B = with the proposed landscaping plan
---

**Table 1a: Pedestrian Wind Comfort and Safety Conditions (RWDI Criteria)**

Location	Configuration	Wind Comfort (20% Seasonal Exceedance)				Wind Safety (0.1% Exceedance)	
		Summer		Winter		Annual	
		Speed (km/h)	Rating	Speed (km/h)	Rating	Speed (km/h)	Rating
31	A	17	Strolling	16	Strolling	75	Pass
	B	17	Strolling	14	Standing	70	Pass
32	A	20	Walking	18	Walking	89	Pass
	B	16	Strolling	14	Standing	73	Pass
33	A	14	Standing	12	Standing	71	Pass
	B	13	Standing	11	Standing	72	Pass
34	A	10	Sitting	10	Sitting	55	Pass
	B	12	Standing	10	Sitting	50	Pass
35	A	13	Standing	13	Standing	65	Pass
	B	14	Standing	13	Standing	64	Pass
36	A	14	Standing	14	Standing	64	Pass
	B	13	Standing	13	Standing	64	Pass
37	A	16	Strolling	16	Strolling	78	Pass
	B	16	Strolling	15	Strolling	72	Pass
38	A	15	Strolling	15	Strolling	77	Pass
	B	15	Strolling	14	Standing	77	Pass
39	A	14	Standing	15	Strolling	87	Pass
	B	11	Standing	12	Standing	63	Pass
40	A	14	Standing	15	Strolling	90	Pass
	B	11	Standing	11	Standing	63	Pass
41	A	17	Strolling	15	Strolling	72	Pass
	B	13	Standing	11	Standing	56	Pass
42	A	13	Standing	11	Standing	61	Pass
	B	10	Sitting	9	Sitting	46	Pass
43	A	18	Walking	16	Strolling	75	Pass
	B	13	Standing	12	Standing	57	Pass
44	A	13	Standing	11	Standing	57	Pass
	B	12	Standing	11	Standing	56	Pass
45	A	13	Standing	11	Standing	68	Pass
	B	12	Standing	11	Standing	55	Pass

<b>Seasons</b> Summer = November to April Winter = May to October	<b>Hours</b> 6:00 to 23:00 for Comfort 0:00 to 23:00 for Safety	<b>Wind Comfort Category</b> (20% Seasonal Exceedance)  ≤ 10 km/h      Sitting 11 to 14        Standing 15 to 17        Strolling 18 to 20        Walking > 20 km/h      Uncomfortable	<b>Wind Safety Category</b> (0.1% Annual Exceedance)  ≤ 90 km/h      Pass > 90 km/h      Exceeded
---	---	---	---

**Configuration**  
A = without the proposed landscaping plan  
B = with the proposed landscaping plan



**Table 1a: Pedestrian Wind Comfort and Safety Conditions (RWDI Criteria)**

Location	Configuration	Wind Comfort (20% Seasonal Exceedance)				Wind Safety (0.1% Exceedance)	
		Summer		Winter		Annual	
		Speed (km/h)	Rating	Speed (km/h)	Rating	Speed (km/h)	Rating
46	A	13	Standing	13	Standing	68	Pass
	B	13	Standing	13	Standing	68	Pass
47	A	13	Standing	13	Standing	63	Pass
	B	13	Standing	13	Standing	65	Pass
48	A	14	Standing	14	Standing	68	Pass
	B	15	Strolling	14	Standing	70	Pass
49	A	15	Strolling	14	Standing	69	Pass
	B	15	Strolling	14	Standing	67	Pass
50	A	14	Standing	12	Standing	65	Pass
	B	13	Standing	12	Standing	64	Pass
51	A	14	Standing	12	Standing	63	Pass
	B	14	Standing	12	Standing	62	Pass
52	A	11	Standing	10	Sitting	46	Pass
	B	11	Standing	10	Sitting	46	Pass
53	A	11	Standing	11	Standing	68	Pass
	B	12	Standing	11	Standing	65	Pass
54	A	12	Standing	11	Standing	65	Pass
	B	10	Sitting	10	Sitting	61	Pass
55	A	9	Sitting	9	Sitting	58	Pass
	B	9	Sitting	9	Sitting	58	Pass
56	A	11	Standing	11	Standing	57	Pass
	B	11	Standing	11	Standing	58	Pass
57	A	10	Sitting	10	Sitting	56	Pass
	B	10	Sitting	10	Sitting	53	Pass
58	A	10	Sitting	10	Sitting	62	Pass
	B	10	Sitting	10	Sitting	61	Pass
59	A	11	Standing	11	Standing	66	Pass
	B	12	Standing	12	Standing	65	Pass
60	A	13	Standing	13	Standing	81	Pass
	B	13	Standing	12	Standing	73	Pass

<b>Seasons</b> Summer = November to April Winter = May to October	<b>Hours</b> 6:00 to 23:00 for Comfort 0:00 to 23:00 for Safety	<b>Wind Comfort Category</b> (20% Seasonal Exceedance)  ≤ 10 km/h      Sitting 11 to 14      Standing 15 to 17      Strolling 18 to 20      Walking > 20 km/h      Uncomfortable	<b>Wind Safety Category</b> (0.1% Annual Exceedance)  ≤ 90 km/h      Pass > 90 km/h      Exceeded
---	---	---	---

<b>Configuration</b> A = without the proposed landscaping plan B = with the proposed landscaping plan
---

**Table 1a: Pedestrian Wind Comfort and Safety Conditions (RWDI Criteria)**

Location	Configuration	Wind Comfort (20% Seasonal Exceedance)				Wind Safety (0.1% Exceedance)	
		Summer		Winter		Annual	
		Speed (km/h)	Rating	Speed (km/h)	Rating	Speed (km/h)	Rating
61	A	14	Standing	14	Standing	77	Pass
	B	14	Standing	13	Standing	75	Pass
62	A	13	Standing	12	Standing	76	Pass
	B	13	Standing	12	Standing	78	Pass
63	A	14	Standing	13	Standing	69	Pass
	B	14	Standing	13	Standing	71	Pass
64	A	16	Strolling	14	Standing	73	Pass
	B	15	Strolling	14	Standing	74	Pass
65	A	17	Strolling	14	Standing	66	Pass
	B	16	Strolling	14	Standing	66	Pass
66	A	17	Strolling	15	Strolling	82	Pass
	B	16	Strolling	14	Standing	74	Pass
67	A	14	Standing	14	Standing	76	Pass
	B	14	Standing	13	Standing	66	Pass
68	A	15	Strolling	15	Strolling	87	Pass
	B	13	Standing	13	Standing	74	Pass
69	A	18	Walking	16	Strolling	82	Pass
	B	16	Strolling	14	Standing	70	Pass
70	A	18	Walking	16	Strolling	80	Pass
	B	18	Walking	16	Strolling	77	Pass
71	A	20	Walking	18	Walking	88	Pass
	B	17	Strolling	15	Strolling	77	Pass
72	A	18	Walking	18	Walking	95	Exceeded
	B	15	Strolling	16	Strolling	93	Exceeded
73	A	8	Sitting	7	Sitting	38	Pass
	B	7	Sitting	6	Sitting	38	Pass
74	A	8	Sitting	7	Sitting	44	Pass
	B	7	Sitting	7	Sitting	44	Pass
75	A	11	Standing	11	Standing	60	Pass
	B	10	Sitting	11	Standing	59	Pass

<b>Seasons</b> Summer = November to April Winter = May to October	<b>Hours</b> 6:00 to 23:00 for Comfort 0:00 to 23:00 for Safety	<b>Wind Comfort Category</b> (20% Seasonal Exceedance)  ≤ 10 km/h      Sitting 11 to 14        Standing 15 to 17        Strolling 18 to 20        Walking > 20 km/h      Uncomfortable	<b>Wind Safety Category</b> (0.1% Annual Exceedance)  ≤ 90 km/h      Pass > 90 km/h      Exceeded
<b>Configuration</b> A = without the proposed landscaping plan B = with the proposed landscaping plan			

**Table 1a: Pedestrian Wind Comfort and Safety Conditions (RWDI Criteria)**

Location	Configuration	Wind Comfort (20% Seasonal Exceedance)				Wind Safety (0.1% Exceedance)	
		Summer		Winter		Annual	
		Speed (km/h)	Rating	Speed (km/h)	Rating	Speed (km/h)	Rating
76	A	9	Sitting	9	Sitting	53	Pass
	B	8	Sitting	8	Sitting	52	Pass
77	A	11	Standing	11	Standing	64	Pass
	B	11	Standing	11	Standing	63	Pass
78	A	11	Standing	11	Standing	63	Pass
	B	11	Standing	11	Standing	64	Pass
79	A	10	Sitting	8	Sitting	49	Pass
	B	10	Sitting	8	Sitting	49	Pass
80	A	15	Strolling	13	Standing	65	Pass
	B	15	Strolling	13	Standing	63	Pass
81	A	13	Standing	11	Standing	57	Pass
	B	13	Standing	11	Standing	56	Pass
82	A	11	Standing	12	Standing	73	Pass
	B	11	Standing	11	Standing	73	Pass
83	A	9	Sitting	8	Sitting	52	Pass
	B	8	Sitting	8	Sitting	49	Pass
84	A	17	Strolling	15	Strolling	70	Pass
	B	16	Strolling	14	Standing	69	Pass
85	A	15	Strolling	13	Standing	64	Pass
	B	14	Standing	13	Standing	66	Pass
86	A	16	Strolling	13	Standing	76	Pass
	B	15	Strolling	13	Standing	76	Pass
87	A	17	Strolling	13	Standing	81	Pass
	B	17	Strolling	13	Standing	81	Pass
88	A	16	Strolling	13	Standing	75	Pass
	B	16	Strolling	13	Standing	71	Pass
89	A	14	Standing	12	Standing	64	Pass
	B	13	Standing	12	Standing	61	Pass
90	A	14	Standing	13	Standing	67	Pass
	B	14	Standing	13	Standing	68	Pass

<b>Seasons</b> Summer = November to April Winter = May to October	<b>Hours</b> 6:00 to 23:00 for Comfort 0:00 to 23:00 for Safety	<b>Wind Comfort Category</b> (20% Seasonal Exceedance)  ≤ 10 km/h      Sitting 11 to 14        Standing 15 to 17        Strolling 18 to 20        Walking > 20 km/h      Uncomfortable	<b>Wind Safety Category</b> (0.1% Annual Exceedance)  ≤ 90 km/h      Pass > 90 km/h      Exceeded
---	---	---	---

<b>Configuration</b> A = without the proposed landscaping plan B = with the proposed landscaping plan
---

**Table 1a: Pedestrian Wind Comfort and Safety Conditions (RWDI Criteria)**

Location	Configuration	Wind Comfort (20% Seasonal Exceedance)				Wind Safety (0.1% Exceedance)	
		Summer		Winter		Annual	
		Speed (km/h)	Rating	Speed (km/h)	Rating	Speed (km/h)	Rating
91	A	11	Standing	9	Sitting	47	Pass
	B	11	Standing	9	Sitting	46	Pass
92	A	16	Strolling	16	Strolling	98	Exceeded
	B	16	Strolling	16	Strolling	100	Exceeded
93	A	15	Strolling	10	Sitting	56	Pass
	B	16	Strolling	11	Standing	60	Pass

**Seasons**

Summer = November to April  
Winter = May to October

**Hours**

6:00 to 23:00 for Comfort  
0:00 to 23:00 for Safety

**Wind Comfort Category**

(20% Seasonal Exceedance)

≤ 10 km/h	Sitting
11 to 14	Standing
15 to 17	Strolling
18 to 20	Walking
> 20 km/h	Uncomfortable

**Wind Safety Category**

(0.1% Annual Exceedance)

≤ 90 km/h	Pass
> 90 km/h	Exceeded

**Configuration**

A = without the proposed landscaping plan  
B = with the proposed landscaping plan

**Table 1b: Pedestrian Wind Comfort and Safety Conditions (RWDI Criteria)**

Location	Configuration	Wind Comfort (20% Seasonal Exceedance)				Wind Safety (0.1% Exceedance)	
		Summer		Winter		Annual	
		Speed (km/h)	Rating	Speed (km/h)	Rating	Speed (km/h)	Rating
1	C	6	Sitting	5	Sitting	28	Pass
	D	6	Sitting	5	Sitting	28	Pass
	E	6	Sitting	5	Sitting	28	Pass
2	C	9	Sitting	7	Sitting	46	Pass
	D	9	Sitting	7	Sitting	45	Pass
	E	9	Sitting	7	Sitting	45	Pass
3	C	12	Standing	11	Standing	59	Pass
	D	12	Standing	11	Standing	59	Pass
	E	12	Standing	11	Standing	61	Pass
4	C	8	Sitting	8	Sitting	39	Pass
	D	9	Sitting	8	Sitting	41	Pass
	E	8	Sitting	8	Sitting	39	Pass
5	C	7	Sitting	7	Sitting	34	Pass
	D	7	Sitting	7	Sitting	35	Pass
	E	7	Sitting	7	Sitting	33	Pass
6	C	8	Sitting	8	Sitting	46	Pass
	D	8	Sitting	8	Sitting	47	Pass
	E	8	Sitting	8	Sitting	45	Pass
7	C	8	Sitting	8	Sitting	44	Pass
	D	8	Sitting	8	Sitting	47	Pass
	E	8	Sitting	8	Sitting	45	Pass
8	C	8	Sitting	10	Sitting	63	Pass
	D	9	Sitting	11	Standing	65	Pass
	E	9	Sitting	11	Standing	63	Pass
9	C	17	Strolling	16	Strolling	75	Pass
	D	17	Strolling	16	Strolling	76	Pass
	E	17	Strolling	16	Strolling	75	Pass
10	C	9	Sitting	7	Sitting	47	Pass
	D	8	Sitting	6	Sitting	47	Pass
	E	9	Sitting	7	Sitting	46	Pass
11	C	6	Sitting	6	Sitting	33	Pass
	D	6	Sitting	6	Sitting	32	Pass
	E	6	Sitting	6	Sitting	34	Pass

<b>Seasons</b>	<b>Hours</b>	<b>Wind Comfort Category</b>	<b>Wind Safety Category</b>
Summer = November to April	6:00 to 23:00 for Comfort	(20% Seasonal Exceedance)	(0.1% Annual Exceedance)
Winter = May to October	0:00 to 23:00 for Safety		
<b>Configuration</b>			
C = with the revised landscaping plan		≤ 10 km/h Sitting	≤ 90 km/h Pass
D = with the revised landscaping plan and pergola along pathway		11 to 14 Standing	> 90 km/h Exceeded
E = with the revised landscaping plan and underplanting		15 to 17 Strolling	
		18 to 20 Walking	
		> 20 km/h Uncomfortable	



**Table 1b: Pedestrian Wind Comfort and Safety Conditions (RWDI Criteria)**

Location	Configuration	Wind Comfort (20% Seasonal Exceedance)				Wind Safety (0.1% Exceedance)	
		Summer		Winter		Annual	
		Speed (km/h)	Rating	Speed (km/h)	Rating	Speed (km/h)	Rating
12	C	8	Sitting	8	Sitting	40	Pass
	D	8	Sitting	8	Sitting	40	Pass
	E	8	Sitting	8	Sitting	39	Pass
13	C	9	Sitting	8	Sitting	40	Pass
	D	9	Sitting	7	Sitting	39	Pass
	E	10	Sitting	8	Sitting	40	Pass
14	C	6	Sitting	6	Sitting	44	Pass
	D	7	Sitting	7	Sitting	44	Pass
	E	7	Sitting	7	Sitting	43	Pass
15	C	7	Sitting	8	Sitting	52	Pass
	D	7	Sitting	8	Sitting	55	Pass
	E	7	Sitting	8	Sitting	50	Pass
16	C	12	Standing	12	Standing	67	Pass
	D	12	Standing	12	Standing	70	Pass
	E	12	Standing	12	Standing	67	Pass
17	C	8	Sitting	8	Sitting	45	Pass
	D	8	Sitting	8	Sitting	46	Pass
	E	9	Sitting	8	Sitting	45	Pass
18	C	12	Standing	10	Sitting	48	Pass
	D	12	Standing	10	Sitting	47	Pass
	E	12	Standing	10	Sitting	48	Pass
19	C	9	Sitting	7	Sitting	37	Pass
	D	9	Sitting	7	Sitting	37	Pass
	E	9	Sitting	7	Sitting	38	Pass
20	C	6	Sitting	6	Sitting	29	Pass
	D	6	Sitting	5	Sitting	28	Pass
	E	6	Sitting	6	Sitting	29	Pass
21	C	8	Sitting	8	Sitting	43	Pass
	D	8	Sitting	8	Sitting	42	Pass
	E	8	Sitting	8	Sitting	43	Pass
22	C	12	Standing	10	Sitting	48	Pass
	D	12	Standing	9	Sitting	46	Pass
	E	12	Standing	9	Sitting	47	Pass

**Seasons**

Summer = November to April

Winter = May to October

**Configuration**

C = with the revised landscaping plan

D = with the revised landscaping plan and pergola along pathway

E = with the revised landscaping plan and underplanting

**Hours**

6:00 to 23:00 for Comfort

0:00 to 23:00 for Safety

**Wind Comfort Category**

(20% Seasonal Exceedance)

≤ 10 km/h

11 to 14

15 to 17

18 to 20

> 20 km/h

Sitting

Standing

Strolling

Walking

Uncomfortable

**Wind Safety Category**

(0.1% Annual Exceedance)

≤ 90 km/h

> 90 km/h

Pass

Exceeded

**Table 1b: Pedestrian Wind Comfort and Safety Conditions (RWDI Criteria)**

Location	Configuration	Wind Comfort (20% Seasonal Exceedance)				Wind Safety (0.1% Exceedance)	
		Summer		Winter		Annual	
		Speed (km/h)	Rating	Speed (km/h)	Rating	Speed (km/h)	Rating
23	C	6	Sitting	5	Sitting	33	Pass
	D	6	Sitting	5	Sitting	34	Pass
	E	7	Sitting	6	Sitting	33	Pass
24	C	9	Sitting	8	Sitting	47	Pass
	D	9	Sitting	8	Sitting	48	Pass
	E	9	Sitting	8	Sitting	46	Pass
25	C	9	Sitting	8	Sitting	46	Pass
	D	9	Sitting	8	Sitting	47	Pass
	E	9	Sitting	8	Sitting	44	Pass
26	C	10	Sitting	9	Sitting	51	Pass
	D	10	Sitting	9	Sitting	53	Pass
	E	10	Sitting	9	Sitting	51	Pass
27	C	8	Sitting	8	Sitting	44	Pass
	D	8	Sitting	8	Sitting	46	Pass
	E	8	Sitting	8	Sitting	44	Pass
28	C	9	Sitting	9	Sitting	49	Pass
	D	9	Sitting	9	Sitting	50	Pass
	E	9	Sitting	9	Sitting	48	Pass
29	C	11	Standing	10	Sitting	50	Pass
	D	11	Standing	10	Sitting	51	Pass
	E	11	Standing	10	Sitting	50	Pass
30	C	11	Standing	10	Sitting	53	Pass
	D	11	Standing	11	Standing	55	Pass
	E	11	Standing	10	Sitting	52	Pass
31	C	12	Standing	11	Standing	58	Pass
	D	16	Strolling	13	Standing	65	Pass
	E	13	Standing	11	Standing	58	Pass
32	C	12	Standing	10	Sitting	55	Pass
	D	9	Sitting	10	Sitting	64	Pass
	E	12	Standing	11	Standing	58	Pass
33	C	11	Standing	11	Standing	71	Pass
	D	10	Sitting	9	Sitting	48	Pass
	E	11	Standing	11	Standing	71	Pass

**Seasons**

Summer = November to April

Winter = May to October

**Configuration**

C = with the revised landscaping plan

D = with the revised landscaping plan and pergola along pathway

E = with the revised landscaping plan and underplanting

**Hours**

6:00 to 23:00 for Comfort

0:00 to 23:00 for Safety

**Wind Comfort Category**

(20% Seasonal Exceedance)

≤ 10 km/h

11 to 14

15 to 17

18 to 20

> 20 km/h

Sitting

Standing

Strolling

Walking

Uncomfortable

**Wind Safety Category**

(0.1% Annual Exceedance)

≤ 90 km/h

> 90 km/h

Pass

Exceeded

**Table 1b: Pedestrian Wind Comfort and Safety Conditions (RWDI Criteria)**

Location	Configuration	Wind Comfort (20% Seasonal Exceedance)				Wind Safety (0.1% Exceedance)	
		Summer		Winter		Annual	
		Speed (km/h)	Rating	Speed (km/h)	Rating	Speed (km/h)	Rating
34	C	7	Sitting	7	Sitting	40	Pass
	D	8	Sitting	8	Sitting	43	Pass
	E	7	Sitting	7	Sitting	37	Pass
35	C	10	Sitting	9	Sitting	46	Pass
	D	10	Sitting	9	Sitting	45	Pass
	E	10	Sitting	9	Sitting	45	Pass
36	C	11	Standing	10	Sitting	50	Pass
	D	11	Standing	10	Sitting	49	Pass
	E	11	Standing	10	Sitting	50	Pass
37	C	14	Standing	13	Standing	65	Pass
	D	14	Standing	13	Standing	64	Pass
	E	14	Standing	13	Standing	64	Pass
38	C	12	Standing	11	Standing	58	Pass
	D	12	Standing	11	Standing	58	Pass
	E	12	Standing	11	Standing	57	Pass
39	C	10	Sitting	11	Standing	61	Pass
	D	10	Sitting	10	Sitting	60	Pass
	E	10	Sitting	11	Standing	60	Pass
40	C	9	Sitting	10	Sitting	61	Pass
	D	9	Sitting	10	Sitting	61	Pass
	E	9	Sitting	10	Sitting	59	Pass
41	C	13	Standing	11	Standing	56	Pass
	D	13	Standing	11	Standing	55	Pass
	E	13	Standing	11	Standing	55	Pass
42	C	9	Sitting	8	Sitting	47	Pass
	D	9	Sitting	8	Sitting	46	Pass
	E	9	Sitting	8	Sitting	47	Pass
43	C	13	Standing	12	Standing	57	Pass
	D	13	Standing	12	Standing	56	Pass
	E	13	Standing	12	Standing	55	Pass
44	C	12	Standing	11	Standing	58	Pass
	D	12	Standing	11	Standing	57	Pass
	E	12	Standing	11	Standing	57	Pass

**Seasons**

Summer = November to April

Winter = May to October

**Configuration**

C = with the revised landscaping plan

D = with the revised landscaping plan and pergola along pathway

E = with the revised landscaping plan and underplanting

**Hours**

6:00 to 23:00 for Comfort

0:00 to 23:00 for Safety

**Wind Comfort Category**

(20% Seasonal Exceedance)

≤ 10 km/h

11 to 14

15 to 17

18 to 20

> 20 km/h

Sitting

Standing

Strolling

Walking

Uncomfortable

**Wind Safety Category**

(0.1% Annual Exceedance)

≤ 90 km/h

> 90 km/h

Pass

Exceeded

**Table 1b: Pedestrian Wind Comfort and Safety Conditions (RWDI Criteria)**

Location	Configuration	Wind Comfort (20% Seasonal Exceedance)				Wind Safety (0.1% Exceedance)	
		Summer		Winter		Annual	
		Speed (km/h)	Rating	Speed (km/h)	Rating	Speed (km/h)	Rating
45	C	12	Standing	11	Standing	61	Pass
	D	12	Standing	11	Standing	59	Pass
	E	12	Standing	11	Standing	60	Pass
46	C	13	Standing	12	Standing	64	Pass
	D	12	Standing	12	Standing	63	Pass
	E	12	Standing	12	Standing	64	Pass
47	C	14	Standing	13	Standing	72	Pass
	D	14	Standing	13	Standing	71	Pass
	E	14	Standing	13	Standing	70	Pass
48	C	14	Standing	14	Standing	68	Pass
	D	13	Standing	14	Standing	67	Pass
	E	13	Standing	14	Standing	67	Pass
49	C	15	Strolling	13	Standing	68	Pass
	D	15	Strolling	14	Standing	68	Pass
	E	15	Strolling	14	Standing	67	Pass
50	C	11	Standing	9	Sitting	46	Pass
	D	11	Standing	9	Sitting	47	Pass
	E	11	Standing	9	Sitting	46	Pass
51	C	13	Standing	12	Standing	65	Pass
	D	14	Standing	12	Standing	64	Pass
	E	13	Standing	12	Standing	64	Pass
52	C	11	Standing	10	Sitting	45	Pass
	D	15	Strolling	12	Standing	63	Pass
	E	11	Standing	10	Sitting	49	Pass
53	C	11	Standing	10	Sitting	56	Pass
	D	10	Sitting	10	Sitting	56	Pass
	E	10	Sitting	10	Sitting	54	Pass
54	C	9	Sitting	10	Sitting	64	Pass
	D	9	Sitting	9	Sitting	61	Pass
	E	9	Sitting	10	Sitting	63	Pass
55	C	9	Sitting	10	Sitting	60	Pass
	D	9	Sitting	10	Sitting	59	Pass
	E	9	Sitting	9	Sitting	57	Pass

<b>Seasons</b>	<b>Hours</b>	<b>Wind Comfort Category</b>	<b>Wind Safety Category</b>
Summer = November to April	6:00 to 23:00 for Comfort	(20% Seasonal Exceedance)	(0.1% Annual Exceedance)
Winter = May to October	0:00 to 23:00 for Safety		
<b>Configuration</b>			
C = with the revised landscaping plan		≤ 10 km/h Sitting	≤ 90 km/h Pass
D = with the revised landscaping plan and pergola along pathway		11 to 14 Standing	> 90 km/h Exceeded
E = with the revised landscaping plan and underplanting		15 to 17 Strolling	
		18 to 20 Walking	
		> 20 km/h Uncomfortable	

**Table 1b: Pedestrian Wind Comfort and Safety Conditions (RWDI Criteria)**

Location	Configuration	Wind Comfort (20% Seasonal Exceedance)				Wind Safety (0.1% Exceedance)	
		Summer		Winter		Annual	
		Speed (km/h)	Rating	Speed (km/h)	Rating	Speed (km/h)	Rating
56	C	11	Standing	10	Sitting	56	Pass
	D	11	Standing	11	Standing	58	Pass
	E	11	Standing	11	Standing	57	Pass
57	C	10	Sitting	10	Sitting	52	Pass
	D	10	Sitting	10	Sitting	53	Pass
	E	10	Sitting	10	Sitting	52	Pass
58	C	10	Sitting	10	Sitting	54	Pass
	D	10	Sitting	10	Sitting	54	Pass
	E	10	Sitting	10	Sitting	55	Pass
59	C	11	Standing	11	Standing	59	Pass
	D	11	Standing	11	Standing	60	Pass
	E	11	Standing	11	Standing	60	Pass
60	C	12	Standing	11	Standing	67	Pass
	D	12	Standing	11	Standing	67	Pass
	E	12	Standing	11	Standing	67	Pass
61	C	12	Standing	11	Standing	58	Pass
	D	12	Standing	11	Standing	59	Pass
	E	12	Standing	11	Standing	60	Pass
62	C	12	Standing	11	Standing	59	Pass
	D	12	Standing	12	Standing	61	Pass
	E	13	Standing	12	Standing	62	Pass
63	C	15	Strolling	13	Standing	74	Pass
	D	15	Strolling	13	Standing	77	Pass
	E	15	Strolling	13	Standing	75	Pass
64	C	14	Standing	13	Standing	61	Pass
	D	14	Standing	13	Standing	64	Pass
	E	14	Standing	13	Standing	63	Pass
65	C	18	Walking	15	Strolling	78	Pass
	D	18	Walking	15	Strolling	80	Pass
	E	18	Walking	15	Strolling	79	Pass
66	C	12	Standing	12	Standing	59	Pass
	D	12	Standing	12	Standing	61	Pass
	E	12	Standing	10	Sitting	57	Pass

**Seasons**

Summer = November to April

Winter = May to October

**Configuration**

C = with the revised landscaping plan

D = with the revised landscaping plan and pergola along pathway

E = with the revised landscaping plan and underplanting

**Hours**

6:00 to 23:00 for Comfort

0:00 to 23:00 for Safety

**Wind Comfort Category**

(20% Seasonal Exceedance)

≤ 10 km/h

11 to 14

15 to 17

18 to 20

> 20 km/h

Sitting

Standing

Strolling

Walking

Uncomfortable

**Wind Safety Category**

(0.1% Annual Exceedance)

≤ 90 km/h

> 90 km/h

Pass

Exceeded



**Table 1b: Pedestrian Wind Comfort and Safety Conditions (RWDI Criteria)**

Location	Configuration	Wind Comfort (20% Seasonal Exceedance)				Wind Safety (0.1% Exceedance)	
		Summer		Winter		Annual	
		Speed (km/h)	Rating	Speed (km/h)	Rating	Speed (km/h)	Rating
67	C	12	Standing	10	Sitting	54	Pass
	D	12	Standing	10	Sitting	53	Pass
	E	12	Standing	10	Sitting	53	Pass
68	C	11	Standing	11	Standing	58	Pass
	D	11	Standing	11	Standing	56	Pass
	E	11	Standing	10	Sitting	56	Pass
69	C	14	Standing	12	Standing	60	Pass
	D	14	Standing	12	Standing	61	Pass
	E	12	Standing	10	Sitting	58	Pass
70	C	15	Strolling	14	Standing	69	Pass
	D	16	Strolling	14	Standing	73	Pass
	E	13	Standing	12	Standing	63	Pass
71	C	13	Standing	12	Standing	71	Pass
	D	14	Standing	13	Standing	75	Pass
	E	12	Standing	11	Standing	62	Pass
72	C	14	Standing	14	Standing	77	Pass
	D	11	Standing	10	Sitting	56	Pass
	E	11	Standing	13	Standing	78	Pass

**Seasons**

Summer = November to April

Winter = May to October

**Configuration**

C = with the revised landscaping plan

D = with the revised landscaping plan and pergola along pathway

E = with the revised landscaping plan and underplanting

**Hours**

6:00 to 23:00 for Comfort

0:00 to 23:00 for Safety

**Wind Comfort Category**

(20% Seasonal Exceedance)

≤ 10 km/h

11 to 14

15 to 17

18 to 20

> 20 km/h

Sitting

Standing

Strolling

Walking

Uncomfortable

**Wind Safety Category**

(0.1% Annual Exceedance)

≤ 90 km/h

> 90 km/h

Pass

Exceeded

**Table 2a: Pedestrian Wind Comfort and Safety Conditions (Lawson Criteria)**

Wind Comfort (5% Seasonal Exceedance)												Wind Safety (0.022% Exceedance)	
Location	Configuration	Spring		Summer		Autumn		Winter		Annual		Annual	
		Speed (m/s)	Rating	Speed (m/s)	Rating	Speed (m/s)	Rating	Speed (m/s)	Rating	Speed (m/s)	Rating	Speed (m/s)	Rating
1	A	4	Pedestrian Sitting	4	Pedestrian Sitting	3	Pedestrian Sitting	3	Pedestrian Sitting	3	Pedestrian Sitting	6	Pass
	B	3	Pedestrian Sitting	3	Pedestrian Sitting	3	Pedestrian Sitting	3	Pedestrian Sitting	3	Pedestrian Sitting	6	Pass
2	A	5	Pedestrian Standing	5	Pedestrian Standing	4	Pedestrian Sitting	4	Pedestrian Sitting	4	Pedestrian Sitting	9	Pass
	B	4	Pedestrian Sitting	4	Pedestrian Sitting	4	Pedestrian Sitting	4	Pedestrian Sitting	4	Pedestrian Sitting	8	Pass
3	A	6	Pedestrian Standing	6	Pedestrian Standing	5	Pedestrian Standing	6	Pedestrian Standing	6	Pedestrian Standing	12	Pass
	B	6	Pedestrian Standing	6	Pedestrian Standing	5	Pedestrian Standing	5	Pedestrian Standing	6	Pedestrian Standing	12	Pass
4	A	5	Pedestrian Standing	5	Pedestrian Standing	4	Pedestrian Sitting	4	Pedestrian Sitting	4	Pedestrian Sitting	8	Pass
	B	4	Pedestrian Sitting	4	Pedestrian Sitting	3	Pedestrian Sitting	4	Pedestrian Sitting	4	Pedestrian Sitting	7	Pass
5	A	4	Pedestrian Sitting	4	Pedestrian Sitting	3	Pedestrian Sitting	4	Pedestrian Sitting	4	Pedestrian Sitting	7	Pass
	B	4	Pedestrian Sitting	3	Pedestrian Sitting	3	Pedestrian Sitting	3	Pedestrian Sitting	3	Pedestrian Sitting	6	Pass
6	A	5	Pedestrian Standing	5	Pedestrian Standing	4	Pedestrian Sitting	4	Pedestrian Sitting	4	Pedestrian Sitting	9	Pass
	B	4	Pedestrian Sitting	4	Pedestrian Sitting	3	Pedestrian Sitting	4	Pedestrian Sitting	4	Pedestrian Sitting	8	Pass
7	A	5	Pedestrian Standing	5	Pedestrian Standing	3	Pedestrian Sitting	4	Pedestrian Sitting	4	Pedestrian Sitting	9	Pass
	B	4	Pedestrian Sitting	4	Pedestrian Sitting	3	Pedestrian Sitting	4	Pedestrian Sitting	4	Pedestrian Sitting	9	Pass
8	A	7	Pedestrian Walking	5	Pedestrian Standing	5	Pedestrian Standing	6	Pedestrian Standing	6	Pedestrian Standing	13	Pass
	B	7	Pedestrian Walking	5	Pedestrian Standing	5	Pedestrian Standing	6	Pedestrian Standing	6	Pedestrian Standing	14	Pass
9	A	11	Uncomfortable	10	Business Walking	8	Pedestrian Walking	9	Business Walking	10	Business Walking	20	Exceeded
	B	10	Business Walking	10	Business Walking	7	Pedestrian Walking	9	Business Walking	9	Business Walking	19	Exceeded

**Seasons**

Spring = September to November  
Summer = December to February  
Autumn = March to May  
Winter = June to August

**Wind Comfort Category**

(5% Seasonal and Annual Exceedance)

≤ 4 m/s	Pedestrian Sitting
4 to 6	Pedestrian Standing
6 to 8	Pedestrian Walking
8 to 10	Business Walking
> 10 m/s	Uncomfortable

**Wind Safety Category**

(0.022% Annual Exceedance)

≤ 15 m/s	Pass
> 15 m/s	Exceeded

**Configuration**

A = without the proposed landscaping plan  
B = with the proposed landscaping plan

**Table 2a: Pedestrian Wind Comfort and Safety Conditions (Lawson Criteria)**

Wind Comfort (5% Seasonal Exceedance)												Wind Safety (0.022% Exceedance)	
Location	Configuration	Spring		Summer		Autumn		Winter		Annual		Annual	
		Speed (m/s)	Rating	Speed (m/s)	Rating	Speed (m/s)	Rating	Speed (m/s)	Rating	Speed (m/s)	Rating	Speed (m/s)	Rating
10	A	6	Pedestrian Standing	7	Pedestrian Walking	4	Pedestrian Sitting	4	Pedestrian Sitting	6	Pedestrian Standing	12	Pass
	B	7	Pedestrian Walking	7	Pedestrian Walking	4	Pedestrian Sitting	4	Pedestrian Sitting	6	Pedestrian Standing	13	Pass
11	A	5	Pedestrian Standing	4	Pedestrian Sitting	4	Pedestrian Sitting	4	Pedestrian Sitting	4	Pedestrian Sitting	9	Pass
	B	4	Pedestrian Sitting	3	Pedestrian Sitting	3	Pedestrian Sitting	3	Pedestrian Sitting	3	Pedestrian Sitting	7	Pass
12	A	4	Pedestrian Sitting	4	Pedestrian Sitting	3	Pedestrian Sitting	4	Pedestrian Sitting	4	Pedestrian Sitting	9	Pass
	B	4	Pedestrian Sitting	4	Pedestrian Sitting	3	Pedestrian Sitting	4	Pedestrian Sitting	4	Pedestrian Sitting	7	Pass
13	A	6	Pedestrian Standing	5	Pedestrian Standing	4	Pedestrian Sitting	5	Pedestrian Standing	5	Pedestrian Standing	11	Pass
	B	5	Pedestrian Standing	5	Pedestrian Standing	4	Pedestrian Sitting	4	Pedestrian Sitting	5	Pedestrian Standing	9	Pass
14	A	8	Pedestrian Walking	6	Pedestrian Standing	6	Pedestrian Standing	8	Pedestrian Walking	7	Pedestrian Walking	18	Exceeded
	B	5	Pedestrian Standing	5	Pedestrian Standing	4	Pedestrian Sitting	4	Pedestrian Sitting	5	Pedestrian Standing	9	Pass
15	A	7	Pedestrian Walking	5	Pedestrian Standing	4	Pedestrian Sitting	7	Pedestrian Walking	6	Pedestrian Standing	16	Exceeded
	B	4	Pedestrian Sitting	4	Pedestrian Sitting	3	Pedestrian Sitting	4	Pedestrian Sitting	4	Pedestrian Sitting	9	Pass
16	A	7	Pedestrian Walking	7	Pedestrian Walking	5	Pedestrian Standing	6	Pedestrian Standing	6	Pedestrian Standing	13	Pass
	B	8	Pedestrian Walking	7	Pedestrian Walking	5	Pedestrian Standing	7	Pedestrian Walking	7	Pedestrian Walking	15	Pass
17	A	6	Pedestrian Standing	6	Pedestrian Standing	4	Pedestrian Sitting	4	Pedestrian Sitting	5	Pedestrian Standing	10	Pass
	B	5	Pedestrian Standing	5	Pedestrian Standing	3	Pedestrian Sitting	3	Pedestrian Sitting	4	Pedestrian Sitting	9	Pass
18	A	8	Pedestrian Walking	8	Pedestrian Walking	6	Pedestrian Standing	5	Pedestrian Standing	7	Pedestrian Walking	14	Pass
	B	7	Pedestrian Walking	7	Pedestrian Walking	5	Pedestrian Standing	5	Pedestrian Standing	6	Pedestrian Standing	12	Pass

**Seasons**

Spring = September to November  
Summer = December to February  
Autumn = March to May  
Winter = June to August

**Wind Comfort Category**

(5% Seasonal and Annual Exceedance)

≤ 4 m/s	Pedestrian Sitting
4 to 6	Pedestrian Standing
6 to 8	Pedestrian Walking
8 to 10	Business Walking
> 10 m/s	Uncomfortable

**Wind Safety Category**

(0.022% Annual Exceedance)

≤ 15 m/s	Pass
> 15 m/s	Exceeded

**Configuration**

A = without the proposed landscaping plan  
B = with the proposed landscaping plan

**Table 2a: Pedestrian Wind Comfort and Safety Conditions (Lawson Criteria)**

Wind Comfort (5% Seasonal Exceedance)												Wind Safety (0.022% Exceedance)	
Location	Configuration	Spring		Summer		Autumn		Winter		Annual		Annual	
		Speed (m/s)	Rating	Speed (m/s)	Rating	Speed (m/s)	Rating	Speed (m/s)	Rating	Speed (m/s)	Rating	Speed (m/s)	Rating
19	A	4	Pedestrian Sitting	4	Pedestrian Sitting	4	Pedestrian Sitting	4	Pedestrian Sitting	4	Pedestrian Sitting	8	Pass
	B	4	Pedestrian Sitting	4	Pedestrian Sitting	3	Pedestrian Sitting	3	Pedestrian Sitting	4	Pedestrian Sitting	7	Pass
20	A	5	Pedestrian Standing	5	Pedestrian Standing	4	Pedestrian Sitting	4	Pedestrian Sitting	4	Pedestrian Sitting	8	Pass
	B	4	Pedestrian Sitting	4	Pedestrian Sitting	3	Pedestrian Sitting	4	Pedestrian Sitting	4	Pedestrian Sitting	7	Pass
21	A	5	Pedestrian Standing	5	Pedestrian Standing	4	Pedestrian Sitting	5	Pedestrian Standing	5	Pedestrian Standing	10	Pass
	B	5	Pedestrian Standing	5	Pedestrian Standing	4	Pedestrian Sitting	4	Pedestrian Sitting	5	Pedestrian Standing	9	Pass
22	A	6	Pedestrian Standing	5	Pedestrian Standing	5	Pedestrian Standing	5	Pedestrian Standing	5	Pedestrian Standing	10	Pass
	B	5	Pedestrian Standing	5	Pedestrian Standing	4	Pedestrian Sitting	5	Pedestrian Standing	5	Pedestrian Standing	9	Pass
23	A	6	Pedestrian Standing	6	Pedestrian Standing	5	Pedestrian Standing	5	Pedestrian Standing	6	Pedestrian Standing	11	Pass
	B	6	Pedestrian Standing	5	Pedestrian Standing	5	Pedestrian Standing	5	Pedestrian Standing	5	Pedestrian Standing	10	Pass
24	A	6	Pedestrian Standing	6	Pedestrian Standing	5	Pedestrian Standing	5	Pedestrian Standing	6	Pedestrian Standing	10	Pass
	B	5	Pedestrian Standing	5	Pedestrian Standing	4	Pedestrian Sitting	4	Pedestrian Sitting	5	Pedestrian Standing	9	Pass
25	A	6	Pedestrian Standing	6	Pedestrian Standing	4	Pedestrian Sitting	5	Pedestrian Standing	5	Pedestrian Standing	11	Pass
	B	5	Pedestrian Standing	4	Pedestrian Sitting	3	Pedestrian Sitting	4	Pedestrian Sitting	4	Pedestrian Sitting	8	Pass
26	A	6	Pedestrian Standing	6	Pedestrian Standing	5	Pedestrian Standing	5	Pedestrian Standing	6	Pedestrian Standing	12	Pass
	B	5	Pedestrian Standing	5	Pedestrian Standing	4	Pedestrian Sitting	4	Pedestrian Sitting	5	Pedestrian Standing	9	Pass
27	A	6	Pedestrian Standing	6	Pedestrian Standing	4	Pedestrian Sitting	5	Pedestrian Standing	5	Pedestrian Standing	11	Pass
	B	4	Pedestrian Sitting	4	Pedestrian Sitting	3	Pedestrian Sitting	4	Pedestrian Sitting	4	Pedestrian Sitting	8	Pass

**Seasons**

Spring = September to November  
Summer = December to February  
Autumn = March to May  
Winter = June to August

**Wind Comfort Category**

(5% Seasonal and Annual Exceedance)

≤ 4 m/s	Pedestrian Sitting
4 to 6	Pedestrian Standing
6 to 8	Pedestrian Walking
8 to 10	Business Walking
> 10 m/s	Uncomfortable

**Wind Safety Category**

(0.022% Annual Exceedance)

≤ 15 m/s	Pass
> 15 m/s	Exceeded

**Configuration**

A = without the proposed landscaping plan  
B = with the proposed landscaping plan

**Table 2a: Pedestrian Wind Comfort and Safety Conditions (Lawson Criteria)**

Wind Comfort (5% Seasonal Exceedance)												Wind Safety (0.022% Exceedance)	
Location	Configuration	Spring		Summer		Autumn		Winter		Annual		Annual	
		Speed (m/s)	Rating	Speed (m/s)	Rating	Speed (m/s)	Rating	Speed (m/s)	Rating	Speed (m/s)	Rating	Speed (m/s)	Rating
28	A	6	Pedestrian Standing	6	Pedestrian Standing	5	Pedestrian Standing	5	Pedestrian Standing	5	Pedestrian Standing	11	Pass
	B	5	Pedestrian Standing	4	Pedestrian Sitting	4	Pedestrian Sitting	4	Pedestrian Sitting	4	Pedestrian Sitting	9	Pass
29	A	6	Pedestrian Standing	6	Pedestrian Standing	5	Pedestrian Standing	6	Pedestrian Standing	6	Pedestrian Standing	12	Pass
	B	5	Pedestrian Standing	5	Pedestrian Standing	4	Pedestrian Sitting	5	Pedestrian Standing	5	Pedestrian Standing	9	Pass
30	A	7	Pedestrian Walking	6	Pedestrian Standing	5	Pedestrian Standing	6	Pedestrian Standing	6	Pedestrian Standing	12	Pass
	B	6	Pedestrian Standing	5	Pedestrian Standing	4	Pedestrian Sitting	5	Pedestrian Standing	5	Pedestrian Standing	11	Pass
31	A	8	Pedestrian Walking	8	Pedestrian Walking	6	Pedestrian Standing	7	Pedestrian Walking	7	Pedestrian Walking	15	Pass
	B	8	Pedestrian Walking	8	Pedestrian Walking	6	Pedestrian Standing	6	Pedestrian Standing	7	Pedestrian Walking	15	Pass
32	A	10	Business Walking	9	Business Walking	8	Pedestrian Walking	9	Business Walking	9	Business Walking	19	Exceeded
	B	8	Pedestrian Walking	7	Pedestrian Walking	6	Pedestrian Standing	7	Pedestrian Walking	7	Pedestrian Walking	15	Pass
33	A	7	Pedestrian Walking	7	Pedestrian Walking	5	Pedestrian Standing	5	Pedestrian Standing	6	Pedestrian Standing	13	Pass
	B	7	Pedestrian Walking	7	Pedestrian Walking	5	Pedestrian Standing	6	Pedestrian Standing	6	Pedestrian Standing	13	Pass
34	A	5	Pedestrian Standing	4	Pedestrian Sitting	4	Pedestrian Sitting	5	Pedestrian Standing	5	Pedestrian Standing	9	Pass
	B	5	Pedestrian Standing	5	Pedestrian Standing	4	Pedestrian Sitting	4	Pedestrian Sitting	5	Pedestrian Standing	9	Pass
35	A	6	Pedestrian Standing	5	Pedestrian Standing	5	Pedestrian Standing	6	Pedestrian Standing	6	Pedestrian Standing	11	Pass
	B	6	Pedestrian Standing	6	Pedestrian Standing	5	Pedestrian Standing	6	Pedestrian Standing	6	Pedestrian Standing	11	Pass
36	A	7	Pedestrian Walking	6	Pedestrian Standing	5	Pedestrian Standing	6	Pedestrian Standing	6	Pedestrian Standing	12	Pass
	B	6	Pedestrian Standing	6	Pedestrian Standing	5	Pedestrian Standing	6	Pedestrian Standing	6	Pedestrian Standing	11	Pass

**Seasons**

Spring = September to November  
Summer = December to February  
Autumn = March to May  
Winter = June to August

**Wind Comfort Category**

(5% Seasonal and Annual Exceedance)

≤ 4 m/s	Pedestrian Sitting
4 to 6	Pedestrian Standing
6 to 8	Pedestrian Walking
8 to 10	Business Walking
> 10 m/s	Uncomfortable

**Wind Safety Category**

(0.022% Annual Exceedance)

≤ 15 m/s	Pass
> 15 m/s	Exceeded

**Configuration**

A = without the proposed landscaping plan  
B = with the proposed landscaping plan

**Table 2a: Pedestrian Wind Comfort and Safety Conditions (Lawson Criteria)**

Wind Comfort (5% Seasonal Exceedance)												Wind Safety (0.022% Exceedance)	
Location	Configuration	Spring		Summer		Autumn		Winter		Annual		Annual	
		Speed (m/s)	Rating	Speed (m/s)	Rating	Speed (m/s)	Rating	Speed (m/s)	Rating	Speed (m/s)	Rating	Speed (m/s)	Rating
37	A	8	Pedestrian Walking	7	Pedestrian Walking	6	Pedestrian Standing	7	Pedestrian Walking	7	Pedestrian Walking	15	Pass
	B	7	Pedestrian Walking	7	Pedestrian Walking	6	Pedestrian Standing	7	Pedestrian Walking	7	Pedestrian Walking	14	Pass
38	A	7	Pedestrian Walking	6	Pedestrian Standing	5	Pedestrian Standing	7	Pedestrian Walking	7	Pedestrian Walking	13	Pass
	B	7	Pedestrian Walking	7	Pedestrian Walking	6	Pedestrian Standing	7	Pedestrian Walking	7	Pedestrian Walking	14	Pass
39	A	8	Pedestrian Walking	6	Pedestrian Standing	5	Pedestrian Standing	8	Pedestrian Walking	7	Pedestrian Walking	18	Exceeded
	B	6	Pedestrian Standing	5	Pedestrian Standing	4	Pedestrian Sitting	6	Pedestrian Standing	5	Pedestrian Standing	14	Pass
40	A	8	Pedestrian Walking	6	Pedestrian Standing	6	Pedestrian Standing	8	Pedestrian Walking	7	Pedestrian Walking	18	Exceeded
	B	6	Pedestrian Standing	5	Pedestrian Standing	4	Pedestrian Sitting	6	Pedestrian Standing	5	Pedestrian Standing	13	Pass
41	A	8	Pedestrian Walking	8	Pedestrian Walking	6	Pedestrian Standing	7	Pedestrian Walking	7	Pedestrian Walking	14	Pass
	B	6	Pedestrian Standing	6	Pedestrian Standing	5	Pedestrian Standing	5	Pedestrian Standing	6	Pedestrian Standing	12	Pass
42	A	7	Pedestrian Walking	7	Pedestrian Walking	5	Pedestrian Standing	5	Pedestrian Standing	6	Pedestrian Standing	13	Pass
	B	5	Pedestrian Standing	5	Pedestrian Standing	4	Pedestrian Sitting	4	Pedestrian Sitting	4	Pedestrian Sitting	9	Pass
43	A	9	Business Walking	8	Pedestrian Walking	7	Pedestrian Walking	7	Pedestrian Walking	8	Pedestrian Walking	14	Pass
	B	7	Pedestrian Walking	6	Pedestrian Standing	5	Pedestrian Standing	6	Pedestrian Standing	6	Pedestrian Standing	12	Pass
44	A	6	Pedestrian Standing	6	Pedestrian Standing	5	Pedestrian Standing	5	Pedestrian Standing	5	Pedestrian Standing	10	Pass
	B	5	Pedestrian Standing	5	Pedestrian Standing	4	Pedestrian Sitting	5	Pedestrian Standing	5	Pedestrian Standing	10	Pass
45	A	6	Pedestrian Standing	7	Pedestrian Walking	5	Pedestrian Standing	5	Pedestrian Standing	6	Pedestrian Standing	12	Pass
	B	5	Pedestrian Standing	5	Pedestrian Standing	4	Pedestrian Sitting	5	Pedestrian Standing	5	Pedestrian Standing	9	Pass

**Seasons**

Spring = September to November  
Summer = December to February  
Autumn = March to May  
Winter = June to August

**Wind Comfort Category**

(5% Seasonal and Annual Exceedance)

≤ 4 m/s	Pedestrian Sitting
4 to 6	Pedestrian Standing
6 to 8	Pedestrian Walking
8 to 10	Business Walking
> 10 m/s	Uncomfortable

**Wind Safety Category**

(0.022% Annual Exceedance)

≤ 15 m/s	Pass
> 15 m/s	Exceeded

**Configuration**

A = without the proposed landscaping plan  
B = with the proposed landscaping plan

**Table 2a: Pedestrian Wind Comfort and Safety Conditions (Lawson Criteria)**

Wind Comfort (5% Seasonal Exceedance)												Wind Safety (0.022% Exceedance)	
Location	Configuration	Spring		Summer		Autumn		Winter		Annual		Annual	
		Speed (m/s)	Rating	Speed (m/s)	Rating	Speed (m/s)	Rating	Speed (m/s)	Rating	Speed (m/s)	Rating	Speed (m/s)	Rating
46	A	6	Pedestrian Standing	5	Pedestrian Standing	5	Pedestrian Standing	6	Pedestrian Standing	6	Pedestrian Standing	13	Pass
	B	6	Pedestrian Standing	5	Pedestrian Standing	5	Pedestrian Standing	6	Pedestrian Standing	6	Pedestrian Standing	12	Pass
47	A	6	Pedestrian Standing	6	Pedestrian Standing	5	Pedestrian Standing	6	Pedestrian Standing	6	Pedestrian Standing	11	Pass
	B	6	Pedestrian Standing	6	Pedestrian Standing	5	Pedestrian Standing	6	Pedestrian Standing	6	Pedestrian Standing	12	Pass
48	A	7	Pedestrian Walking	6	Pedestrian Standing	5	Pedestrian Standing	7	Pedestrian Walking	6	Pedestrian Standing	14	Pass
	B	7	Pedestrian Walking	7	Pedestrian Walking	5	Pedestrian Standing	7	Pedestrian Walking	7	Pedestrian Walking	14	Pass
49	A	7	Pedestrian Walking	6	Pedestrian Standing	5	Pedestrian Standing	6	Pedestrian Standing	6	Pedestrian Standing	12	Pass
	B	7	Pedestrian Walking	6	Pedestrian Standing	5	Pedestrian Standing	6	Pedestrian Standing	6	Pedestrian Standing	12	Pass
50	A	6	Pedestrian Standing	6	Pedestrian Standing	5	Pedestrian Standing	6	Pedestrian Standing	6	Pedestrian Standing	11	Pass
	B	6	Pedestrian Standing	5	Pedestrian Standing	5	Pedestrian Standing	6	Pedestrian Standing	5	Pedestrian Standing	11	Pass
51	A	6	Pedestrian Standing	6	Pedestrian Standing	5	Pedestrian Standing	5	Pedestrian Standing	6	Pedestrian Standing	11	Pass
	B	6	Pedestrian Standing	6	Pedestrian Standing	5	Pedestrian Standing	5	Pedestrian Standing	6	Pedestrian Standing	11	Pass
52	A	5	Pedestrian Standing	4	Pedestrian Sitting	4	Pedestrian Sitting	4	Pedestrian Sitting	4	Pedestrian Sitting	8	Pass
	B	5	Pedestrian Standing	4	Pedestrian Sitting	4	Pedestrian Sitting	4	Pedestrian Sitting	4	Pedestrian Sitting	8	Pass
53	A	6	Pedestrian Standing	5	Pedestrian Standing	4	Pedestrian Sitting	5	Pedestrian Standing	5	Pedestrian Standing	12	Pass
	B	6	Pedestrian Standing	5	Pedestrian Standing	4	Pedestrian Sitting	5	Pedestrian Standing	5	Pedestrian Standing	11	Pass
54	A	6	Pedestrian Standing	5	Pedestrian Standing	4	Pedestrian Sitting	5	Pedestrian Standing	5	Pedestrian Standing	12	Pass
	B	5	Pedestrian Standing	5	Pedestrian Standing	4	Pedestrian Sitting	5	Pedestrian Standing	5	Pedestrian Standing	11	Pass

**Seasons**

Spring = September to November  
Summer = December to February  
Autumn = March to May  
Winter = June to August

**Wind Comfort Category**

(5% Seasonal and Annual Exceedance)

≤ 4 m/s	Pedestrian Sitting
4 to 6	Pedestrian Standing
6 to 8	Pedestrian Walking
8 to 10	Business Walking
> 10 m/s	Uncomfortable

**Wind Safety Category**

(0.022% Annual Exceedance)

≤ 15 m/s	Pass
> 15 m/s	Exceeded

**Configuration**

A = without the proposed landscaping plan  
B = with the proposed landscaping plan



**Table 2a: Pedestrian Wind Comfort and Safety Conditions (Lawson Criteria)**

Wind Comfort (5% Seasonal Exceedance)												Wind Safety (0.022% Exceedance)	
Location	Configuration	Spring		Summer		Autumn		Winter		Annual		Annual	
		Speed (m/s)	Rating	Speed (m/s)	Rating	Speed (m/s)	Rating	Speed (m/s)	Rating	Speed (m/s)	Rating	Speed (m/s)	Rating
55	A	5	Pedestrian Standing	4	Pedestrian Sitting	3	Pedestrian Sitting	5	Pedestrian Standing	4	Pedestrian Sitting	10	Pass
	B	5	Pedestrian Standing	4	Pedestrian Sitting	3	Pedestrian Sitting	5	Pedestrian Standing	4	Pedestrian Sitting	10	Pass
56	A	5	Pedestrian Standing	5	Pedestrian Standing	4	Pedestrian Sitting	5	Pedestrian Standing	5	Pedestrian Standing	10	Pass
	B	6	Pedestrian Standing	5	Pedestrian Standing	4	Pedestrian Sitting	5	Pedestrian Standing	5	Pedestrian Standing	10	Pass
57	A	5	Pedestrian Standing	4	Pedestrian Sitting	4	Pedestrian Sitting	5	Pedestrian Standing	4	Pedestrian Sitting	10	Pass
	B	5	Pedestrian Standing	4	Pedestrian Sitting	4	Pedestrian Sitting	5	Pedestrian Standing	4	Pedestrian Sitting	9	Pass
58	A	5	Pedestrian Standing	4	Pedestrian Sitting	4	Pedestrian Sitting	5	Pedestrian Standing	5	Pedestrian Standing	11	Pass
	B	5	Pedestrian Standing	4	Pedestrian Sitting	4	Pedestrian Sitting	5	Pedestrian Standing	5	Pedestrian Standing	11	Pass
59	A	6	Pedestrian Standing	5	Pedestrian Standing	4	Pedestrian Sitting	6	Pedestrian Standing	5	Pedestrian Standing	12	Pass
	B	6	Pedestrian Standing	5	Pedestrian Standing	4	Pedestrian Sitting	6	Pedestrian Standing	5	Pedestrian Standing	13	Pass
60	A	7	Pedestrian Walking	6	Pedestrian Standing	5	Pedestrian Standing	7	Pedestrian Walking	6	Pedestrian Standing	16	Exceeded
	B	6	Pedestrian Standing	6	Pedestrian Standing	5	Pedestrian Standing	6	Pedestrian Standing	6	Pedestrian Standing	13	Pass
61	A	7	Pedestrian Walking	6	Pedestrian Standing	5	Pedestrian Standing	7	Pedestrian Walking	6	Pedestrian Standing	15	Pass
	B	7	Pedestrian Walking	6	Pedestrian Standing	5	Pedestrian Standing	7	Pedestrian Walking	6	Pedestrian Standing	15	Pass
62	A	7	Pedestrian Walking	6	Pedestrian Standing	6	Pedestrian Standing	6	Pedestrian Standing	6	Pedestrian Standing	14	Pass
	B	7	Pedestrian Walking	6	Pedestrian Standing	6	Pedestrian Standing	6	Pedestrian Standing	6	Pedestrian Standing	14	Pass
63	A	7	Pedestrian Walking	6	Pedestrian Standing	5	Pedestrian Standing	6	Pedestrian Standing	6	Pedestrian Standing	13	Pass
	B	7	Pedestrian Walking	6	Pedestrian Standing	5	Pedestrian Standing	6	Pedestrian Standing	6	Pedestrian Standing	13	Pass

**Seasons**

Spring = September to November  
Summer = December to February  
Autumn = March to May  
Winter = June to August

**Wind Comfort Category**

(5% Seasonal and Annual Exceedance)

≤ 4 m/s	Pedestrian Sitting
4 to 6	Pedestrian Standing
6 to 8	Pedestrian Walking
8 to 10	Business Walking
> 10 m/s	Uncomfortable

**Wind Safety Category**

(0.022% Annual Exceedance)

≤ 15 m/s	Pass
> 15 m/s	Exceeded

**Configuration**

A = without the proposed landscaping plan  
B = with the proposed landscaping plan

**Table 2a: Pedestrian Wind Comfort and Safety Conditions (Lawson Criteria)**

Wind Comfort (5% Seasonal Exceedance)												Wind Safety (0.022% Exceedance)	
Location	Configuration	Spring		Summer		Autumn		Winter		Annual		Annual	
		Speed (m/s)	Rating	Speed (m/s)	Rating	Speed (m/s)	Rating	Speed (m/s)	Rating	Speed (m/s)	Rating	Speed (m/s)	Rating
64	A	7	Pedestrian Walking	7	Pedestrian Walking	6	Pedestrian Standing	6	Pedestrian Standing	7	Pedestrian Walking	14	Pass
	B	7	Pedestrian Walking	7	Pedestrian Walking	6	Pedestrian Standing	6	Pedestrian Standing	7	Pedestrian Walking	14	Pass
65	A	7	Pedestrian Walking	7	Pedestrian Walking	6	Pedestrian Standing	6	Pedestrian Standing	7	Pedestrian Walking	13	Pass
	B	7	Pedestrian Walking	7	Pedestrian Walking	6	Pedestrian Standing	6	Pedestrian Standing	7	Pedestrian Walking	12	Pass
66	A	9	Business Walking	7	Pedestrian Walking	6	Pedestrian Standing	7	Pedestrian Walking	7	Pedestrian Walking	17	Exceeded
	B	8	Pedestrian Walking	7	Pedestrian Walking	6	Pedestrian Standing	7	Pedestrian Walking	7	Pedestrian Walking	15	Pass
67	A	7	Pedestrian Walking	6	Pedestrian Standing	5	Pedestrian Standing	7	Pedestrian Walking	6	Pedestrian Standing	16	Exceeded
	B	7	Pedestrian Walking	6	Pedestrian Standing	5	Pedestrian Standing	6	Pedestrian Standing	6	Pedestrian Standing	13	Pass
68	A	8	Pedestrian Walking	7	Pedestrian Walking	6	Pedestrian Standing	8	Pedestrian Walking	7	Pedestrian Walking	18	Exceeded
	B	7	Pedestrian Walking	6	Pedestrian Standing	5	Pedestrian Standing	7	Pedestrian Walking	6	Pedestrian Standing	15	Pass
69	A	9	Business Walking	8	Pedestrian Walking	7	Pedestrian Walking	8	Pedestrian Walking	8	Pedestrian Walking	17	Exceeded
	B	8	Pedestrian Walking	7	Pedestrian Walking	6	Pedestrian Standing	6	Pedestrian Standing	7	Pedestrian Walking	14	Pass
70	A	9	Business Walking	8	Pedestrian Walking	7	Pedestrian Walking	7	Pedestrian Walking	8	Pedestrian Walking	16	Exceeded
	B	8	Pedestrian Walking	8	Pedestrian Walking	7	Pedestrian Walking	7	Pedestrian Walking	8	Pedestrian Walking	15	Pass
71	A	10	Business Walking	9	Business Walking	8	Pedestrian Walking	8	Pedestrian Walking	9	Business Walking	18	Exceeded
	B	8	Pedestrian Walking	8	Pedestrian Walking	6	Pedestrian Standing	7	Pedestrian Walking	7	Pedestrian Walking	15	Pass
72	A	10	Business Walking	8	Pedestrian Walking	7	Pedestrian Walking	9	Business Walking	9	Business Walking	20	Exceeded
	B	9	Business Walking	7	Pedestrian Walking	6	Pedestrian Standing	9	Business Walking	8	Pedestrian Walking	20	Exceeded

**Seasons**

Spring = September to November

Summer = December to February

Autumn = March to May

Winter = June to August

**Wind Comfort Category**

(5% Seasonal and Annual Exceedance)

≤ 4 m/s

4 to 6

6 to 8

8 to 10

Pedestrian Sitting

Pedestrian Standing

Pedestrian Walking

Business Walking

&gt; 10 m/s

Uncomfortable

**Wind Safety Category**

(0.022% Annual Exceedance)

≤ 15 m/s

&gt; 15 m/s

Pass

Exceeded

**Configuration**

A = without the proposed landscaping plan

B = with the proposed landscaping plan

**Table 2a: Pedestrian Wind Comfort and Safety Conditions (Lawson Criteria)**

Wind Comfort (5% Seasonal Exceedance)												Wind Safety (0.022% Exceedance)	
Location	Configuration	Spring		Summer		Autumn		Winter		Annual		Annual	
		Speed (m/s)	Rating	Speed (m/s)	Rating	Speed (m/s)	Rating	Speed (m/s)	Rating	Speed (m/s)	Rating	Speed (m/s)	Rating
73	A	4	Pedestrian Sitting	4	Pedestrian Sitting	3	Pedestrian Sitting	3	Pedestrian Sitting	3	Pedestrian Sitting	7	Pass
	B	3	Pedestrian Sitting	3	Pedestrian Sitting	2	Pedestrian Sitting	3	Pedestrian Sitting	3	Pedestrian Sitting	7	Pass
74	A	4	Pedestrian Sitting	4	Pedestrian Sitting	3	Pedestrian Sitting	4	Pedestrian Sitting	4	Pedestrian Sitting	8	Pass
	B	4	Pedestrian Sitting	4	Pedestrian Sitting	3	Pedestrian Sitting	4	Pedestrian Sitting	4	Pedestrian Sitting	8	Pass
75	A	6	Pedestrian Standing	5	Pedestrian Standing	4	Pedestrian Sitting	5	Pedestrian Standing	5	Pedestrian Standing	10	Pass
	B	6	Pedestrian Standing	5	Pedestrian Standing	4	Pedestrian Sitting	5	Pedestrian Standing	5	Pedestrian Standing	10	Pass
76	A	5	Pedestrian Standing	4	Pedestrian Sitting	4	Pedestrian Sitting	4	Pedestrian Sitting	4	Pedestrian Sitting	9	Pass
	B	5	Pedestrian Standing	4	Pedestrian Sitting	4	Pedestrian Sitting	4	Pedestrian Sitting	4	Pedestrian Sitting	9	Pass
77	A	6	Pedestrian Standing	5	Pedestrian Standing	4	Pedestrian Sitting	5	Pedestrian Standing	5	Pedestrian Standing	11	Pass
	B	6	Pedestrian Standing	5	Pedestrian Standing	4	Pedestrian Sitting	5	Pedestrian Standing	5	Pedestrian Standing	11	Pass
78	A	5	Pedestrian Standing	5	Pedestrian Standing	4	Pedestrian Sitting	5	Pedestrian Standing	5	Pedestrian Standing	11	Pass
	B	5	Pedestrian Standing	5	Pedestrian Standing	4	Pedestrian Sitting	5	Pedestrian Standing	5	Pedestrian Standing	11	Pass
79	A	5	Pedestrian Standing	5	Pedestrian Standing	4	Pedestrian Sitting	4	Pedestrian Sitting	4	Pedestrian Sitting	9	Pass
	B	4	Pedestrian Sitting	4	Pedestrian Sitting	4	Pedestrian Sitting	4	Pedestrian Sitting	4	Pedestrian Sitting	9	Pass
80	A	7	Pedestrian Walking	7	Pedestrian Walking	5	Pedestrian Standing	5	Pedestrian Standing	6	Pedestrian Standing	11	Pass
	B	6	Pedestrian Standing	6	Pedestrian Standing	5	Pedestrian Standing	5	Pedestrian Standing	6	Pedestrian Standing	11	Pass
81	A	6	Pedestrian Standing	5	Pedestrian Standing	4	Pedestrian Sitting	5	Pedestrian Standing	5	Pedestrian Standing	10	Pass
	B	6	Pedestrian Standing	5	Pedestrian Standing	4	Pedestrian Sitting	5	Pedestrian Standing	5	Pedestrian Standing	10	Pass

**Seasons**

Spring = September to November  
Summer = December to February  
Autumn = March to May  
Winter = June to August

**Wind Comfort Category**

(5% Seasonal and Annual Exceedance)

≤ 4 m/s	Pedestrian Sitting
4 to 6	Pedestrian Standing
6 to 8	Pedestrian Walking
8 to 10	Business Walking
> 10 m/s	Uncomfortable

**Wind Safety Category**

(0.022% Annual Exceedance)

≤ 15 m/s	Pass
> 15 m/s	Exceeded

**Configuration**

A = without the proposed landscaping plan  
B = with the proposed landscaping plan

**Table 2a: Pedestrian Wind Comfort and Safety Conditions (Lawson Criteria)**

Wind Comfort (5% Seasonal Exceedance)												Wind Safety (0.022% Exceedance)	
Location	Configuration	Spring		Summer		Autumn		Winter		Annual		Annual	
		Speed (m/s)	Rating	Speed (m/s)	Rating	Speed (m/s)	Rating	Speed (m/s)	Rating	Speed (m/s)	Rating	Speed (m/s)	Rating
82	A	6	Pedestrian Standing	5	Pedestrian Standing	4	Pedestrian Sitting	6	Pedestrian Standing	5	Pedestrian Standing	14	Pass
	B	6	Pedestrian Standing	5	Pedestrian Standing	4	Pedestrian Sitting	6	Pedestrian Standing	5	Pedestrian Standing	14	Pass
83	A	4	Pedestrian Sitting	4	Pedestrian Sitting	4	Pedestrian Sitting	4	Pedestrian Sitting	4	Pedestrian Sitting	10	Pass
	B	4	Pedestrian Sitting	4	Pedestrian Sitting	4	Pedestrian Sitting	4	Pedestrian Sitting	4	Pedestrian Sitting	9	Pass
84	A	7	Pedestrian Walking	7	Pedestrian Walking	6	Pedestrian Standing	6	Pedestrian Standing	7	Pedestrian Walking	12	Pass
	B	7	Pedestrian Walking	7	Pedestrian Walking	6	Pedestrian Standing	6	Pedestrian Standing	6	Pedestrian Standing	12	Pass
85	A	6	Pedestrian Standing	6	Pedestrian Standing	5	Pedestrian Standing	6	Pedestrian Standing	6	Pedestrian Standing	11	Pass
	B	7	Pedestrian Walking	6	Pedestrian Standing	5	Pedestrian Standing	6	Pedestrian Standing	6	Pedestrian Standing	13	Pass
86	A	7	Pedestrian Walking	8	Pedestrian Walking	5	Pedestrian Standing	5	Pedestrian Standing	7	Pedestrian Walking	14	Pass
	B	7	Pedestrian Walking	7	Pedestrian Walking	5	Pedestrian Standing	5	Pedestrian Standing	6	Pedestrian Standing	14	Pass
87	A	9	Business Walking	10	Business Walking	6	Pedestrian Standing	5	Pedestrian Standing	7	Pedestrian Walking	17	Exceeded
	B	9	Business Walking	10	Business Walking	6	Pedestrian Standing	5	Pedestrian Standing	7	Pedestrian Walking	17	Exceeded
88	A	8	Pedestrian Walking	8	Pedestrian Walking	5	Pedestrian Standing	5	Pedestrian Standing	7	Pedestrian Walking	14	Pass
	B	8	Pedestrian Walking	8	Pedestrian Walking	5	Pedestrian Standing	5	Pedestrian Standing	7	Pedestrian Walking	14	Pass
89	A	6	Pedestrian Standing	6	Pedestrian Standing	5	Pedestrian Standing	5	Pedestrian Standing	6	Pedestrian Standing	11	Pass
	B	6	Pedestrian Standing	6	Pedestrian Standing	4	Pedestrian Sitting	5	Pedestrian Standing	5	Pedestrian Standing	10	Pass
90	A	6	Pedestrian Standing	6	Pedestrian Standing	5	Pedestrian Standing	6	Pedestrian Standing	6	Pedestrian Standing	11	Pass
	B	6	Pedestrian Standing	6	Pedestrian Standing	5	Pedestrian Standing	6	Pedestrian Standing	6	Pedestrian Standing	11	Pass

**Seasons**

Spring = September to November

Summer = December to February

Autumn = March to May

Winter = June to August

**Wind Comfort Category**

(5% Seasonal and Annual Exceedance)

≤ 4 m/s

4 to 6

6 to 8

8 to 10

Pedestrian Sitting

Pedestrian Standing

Pedestrian Walking

Business Walking

&gt; 10 m/s

Uncomfortable

**Wind Safety Category**

(0.022% Annual Exceedance)

≤ 15 m/s

&gt; 15 m/s

Pass

Exceeded

**Configuration**

A = without the proposed landscaping plan

B = with the proposed landscaping plan

**Table 2a: Pedestrian Wind Comfort and Safety Conditions (Lawson Criteria)**

Wind Comfort (5% Seasonal Exceedance)												Wind Safety (0.022% Exceedance)	
Location	Configuration	Spring		Summer		Autumn		Winter		Annual		Annual	
		Speed (m/s)	Rating	Speed (m/s)	Rating	Speed (m/s)	Rating	Speed (m/s)	Rating	Speed (m/s)	Rating	Speed (m/s)	Rating
91	A	5	Pedestrian Standing	5	Pedestrian Standing	4	Pedestrian Sitting	4	Pedestrian Sitting	5	Pedestrian Standing	9	Pass
	B	5	Pedestrian Standing	5	Pedestrian Standing	4	Pedestrian Sitting	4	Pedestrian Sitting	4	Pedestrian Sitting	8	Pass
92	A	8	Pedestrian Walking	7	Pedestrian Walking	6	Pedestrian Standing	8	Pedestrian Walking	7	Pedestrian Walking	17	Exceeded
	B	8	Pedestrian Walking	7	Pedestrian Walking	6	Pedestrian Standing	8	Pedestrian Walking	7	Pedestrian Walking	17	Exceeded
93	A	7	Pedestrian Walking	7	Pedestrian Walking	5	Pedestrian Standing	5	Pedestrian Standing	6	Pedestrian Standing	12	Pass
	B	7	Pedestrian Walking	7	Pedestrian Walking	5	Pedestrian Standing	5	Pedestrian Standing	6	Pedestrian Standing	12	Pass

**Seasons**

Spring = September to November  
Summer = December to February  
Autumn = March to May  
Winter = June to August

**Wind Comfort Category**

(5% Seasonal and Annual Exceedance)

≤ 4 m/s	Pedestrian Sitting
4 to 6	Pedestrian Standing
6 to 8	Pedestrian Walking
8 to 10	Business Walking
> 10 m/s	Uncomfortable

**Wind Safety Category**

(0.022% Annual Exceedance)

≤ 15 m/s	Pass
> 15 m/s	Exceeded

**Configuration**

A = without the proposed landscaping plan  
B = with the proposed landscaping plan

**Table 2b: Pedestrian Wind Comfort and Safety Conditions (Lawson Criteria)**

Wind Comfort (5% Seasonal Exceedance)												Wind Safety (0.022% Exceedance)	
Location	Configuration	Spring		Summer		Autumn		Winter		Annual		Annual	
		Speed (m/s)	Rating	Speed (m/s)	Rating	Speed (m/s)	Rating	Speed (m/s)	Rating	Speed (m/s)	Rating	Speed (m/s)	Rating
1	C	3	Pedestrian Sitting	3	Pedestrian Sitting	2	Pedestrian Sitting	2	Pedestrian Sitting	3	Pedestrian Sitting	5	Pass
	D	3	Pedestrian Sitting	3	Pedestrian Sitting	2	Pedestrian Sitting	2	Pedestrian Sitting	3	Pedestrian Sitting	5	Pass
	E	3	Pedestrian Sitting	3	Pedestrian Sitting	2	Pedestrian Sitting	2	Pedestrian Sitting	3	Pedestrian Sitting	5	Pass
2	C	4	Pedestrian Sitting	4	Pedestrian Sitting	4	Pedestrian Sitting	3	Pedestrian Sitting	4	Pedestrian Sitting	8	Pass
	D	4	Pedestrian Sitting	4	Pedestrian Sitting	4	Pedestrian Sitting	3	Pedestrian Sitting	4	Pedestrian Sitting	8	Pass
	E	4	Pedestrian Sitting	4	Pedestrian Sitting	4	Pedestrian Sitting	3	Pedestrian Sitting	4	Pedestrian Sitting	8	Pass
3	C	6	Pedestrian Standing	5	Pedestrian Standing	5	Pedestrian Standing	5	Pedestrian Standing	5	Pedestrian Standing	11	Pass
	D	6	Pedestrian Standing	5	Pedestrian Standing	5	Pedestrian Standing	5	Pedestrian Standing	5	Pedestrian Standing	11	Pass
	E	6	Pedestrian Standing	5	Pedestrian Standing	5	Pedestrian Standing	5	Pedestrian Standing	5	Pedestrian Standing	11	Pass
4	C	4	Pedestrian Sitting	4	Pedestrian Sitting	3	Pedestrian Sitting	3	Pedestrian Sitting	4	Pedestrian Sitting	7	Pass
	D	4	Pedestrian Sitting	4	Pedestrian Sitting	3	Pedestrian Sitting	3	Pedestrian Sitting	4	Pedestrian Sitting	7	Pass
	E	4	Pedestrian Sitting	4	Pedestrian Sitting	3	Pedestrian Sitting	3	Pedestrian Sitting	4	Pedestrian Sitting	7	Pass
5	C	3	Pedestrian Sitting	3	Pedestrian Sitting	3	Pedestrian Sitting	3	Pedestrian Sitting	3	Pedestrian Sitting	6	Pass
	D	3	Pedestrian Sitting	3	Pedestrian Sitting	3	Pedestrian Sitting	3	Pedestrian Sitting	3	Pedestrian Sitting	6	Pass
	E	3	Pedestrian Sitting	3	Pedestrian Sitting	3	Pedestrian Sitting	3	Pedestrian Sitting	3	Pedestrian Sitting	6	Pass
6	C	4	Pedestrian Sitting	4	Pedestrian Sitting	3	Pedestrian Sitting	4	Pedestrian Sitting	4	Pedestrian Sitting	8	Pass
	D	4	Pedestrian Sitting	4	Pedestrian Sitting	3	Pedestrian Sitting	4	Pedestrian Sitting	4	Pedestrian Sitting	8	Pass
	E	4	Pedestrian Sitting	4	Pedestrian Sitting	3	Pedestrian Sitting	4	Pedestrian Sitting	4	Pedestrian Sitting	8	Pass

**Seasons**

Spring = September to November

Summer = December to February

Autumn = March to May

Winter = June to August

**Configuration**

C = with the revised landscaping plan

D = with the revised landscaping plan and pergola along pathway

E = with the revised landscaping plan and underplanting

**Wind Comfort Category**

(5% Seasonal and Annual Exceedance)

≤ 4 m/s

4 to 6

6 to 8

8 to 10

> 10 m/s

Pedestrian Sitting

Pedestrian Standing

Pedestrian Walking

Business Walking

Uncomfortable

**Wind Safety Category**

(0.022% Annual Exceedance)

≤ 15 m/s

> 15 m/s

Pass

Exceeded

**Table 2b: Pedestrian Wind Comfort and Safety Conditions (Lawson Criteria)**

Wind Comfort (5% Seasonal Exceedance)												Wind Safety (0.022% Exceedance)	
Location	Configuration	Spring		Summer		Autumn		Winter		Annual		Annual	
		Speed (m/s)	Rating	Speed (m/s)	Rating	Speed (m/s)	Rating	Speed (m/s)	Rating	Speed (m/s)	Rating	Speed (m/s)	Rating
7	C	4	Pedestrian Sitting	3	Pedestrian Sitting	3	Pedestrian Sitting	4	Pedestrian Sitting	3	Pedestrian Sitting	8	Pass
	D	4	Pedestrian Sitting	4	Pedestrian Sitting	3	Pedestrian Sitting	4	Pedestrian Sitting	4	Pedestrian Sitting	8	Pass
	E	4	Pedestrian Sitting	3	Pedestrian Sitting	3	Pedestrian Sitting	4	Pedestrian Sitting	3	Pedestrian Sitting	8	Pass
8	C	6	Pedestrian Standing	4	Pedestrian Sitting	4	Pedestrian Sitting	6	Pedestrian Standing	5	Pedestrian Standing	13	Pass
	D	6	Pedestrian Standing	5	Pedestrian Standing	5	Pedestrian Standing	6	Pedestrian Standing	6	Pedestrian Standing	13	Pass
	E	6	Pedestrian Standing	5	Pedestrian Standing	4	Pedestrian Sitting	6	Pedestrian Standing	5	Pedestrian Standing	12	Pass
9	C	9	Business Walking	8	Pedestrian Walking	6	Pedestrian Standing	7	Pedestrian Walking	8	Pedestrian Walking	16	Exceeded
	D	9	Business Walking	8	Pedestrian Walking	6	Pedestrian Standing	7	Pedestrian Walking	8	Pedestrian Walking	17	Exceeded
	E	9	Business Walking	9	Business Walking	6	Pedestrian Standing	7	Pedestrian Walking	8	Pedestrian Walking	16	Exceeded
10	C	5	Pedestrian Standing	5	Pedestrian Standing	3	Pedestrian Sitting	3	Pedestrian Sitting	4	Pedestrian Sitting	9	Pass
	D	5	Pedestrian Standing	5	Pedestrian Standing	3	Pedestrian Sitting	3	Pedestrian Sitting	4	Pedestrian Sitting	9	Pass
	E	5	Pedestrian Standing	5	Pedestrian Standing	3	Pedestrian Sitting	3	Pedestrian Sitting	4	Pedestrian Sitting	9	Pass
11	C	3	Pedestrian Sitting	3	Pedestrian Sitting	2	Pedestrian Sitting	3	Pedestrian Sitting	3	Pedestrian Sitting	6	Pass
	D	3	Pedestrian Sitting	3	Pedestrian Sitting	2	Pedestrian Sitting	3	Pedestrian Sitting	3	Pedestrian Sitting	6	Pass
	E	3	Pedestrian Sitting	3	Pedestrian Sitting	2	Pedestrian Sitting	3	Pedestrian Sitting	3	Pedestrian Sitting	6	Pass
12	C	4	Pedestrian Sitting	4	Pedestrian Sitting	3	Pedestrian Sitting	3	Pedestrian Sitting	4	Pedestrian Sitting	7	Pass
	D	4	Pedestrian Sitting	4	Pedestrian Sitting	3	Pedestrian Sitting	3	Pedestrian Sitting	4	Pedestrian Sitting	7	Pass
	E	4	Pedestrian Sitting	4	Pedestrian Sitting	3	Pedestrian Sitting	3	Pedestrian Sitting	3	Pedestrian Sitting	7	Pass

**Seasons**

Spring = September to November

Summer = December to February

Autumn = March to May

Winter = June to August

**Configuration**

C = with the revised landscaping plan

D = with the revised landscaping plan and pergola along pathway

E = with the revised landscaping plan and underplanting

**Wind Comfort Category**

(5% Seasonal and Annual Exceedance)

≤ 4 m/s

4 to 6

6 to 8

8 to 10

&gt; 10 m/s

Pedestrian Sitting

Pedestrian Standing

Pedestrian Walking

Business Walking

Uncomfortable

**Wind Safety Category**

(0.022% Annual Exceedance)

≤ 15 m/s

&gt; 15 m/s

Pass

Exceeded



**Table 2b: Pedestrian Wind Comfort and Safety Conditions (Lawson Criteria)**

Wind Comfort (5% Seasonal Exceedance)												Wind Safety (0.022% Exceedance)	
Location	Configuration	Spring		Summer		Autumn		Winter		Annual		Annual	
		Speed (m/s)	Rating	Speed (m/s)	Rating	Speed (m/s)	Rating	Speed (m/s)	Rating	Speed (m/s)	Rating	Speed (m/s)	Rating
13	C	4	Pedestrian Sitting	4	Pedestrian Sitting	3	Pedestrian Sitting	4	Pedestrian Sitting	4	Pedestrian Sitting	7	Pass
	D	4	Pedestrian Sitting	4	Pedestrian Sitting	3	Pedestrian Sitting	3	Pedestrian Sitting	3	Pedestrian Sitting	7	Pass
	E	4	Pedestrian Sitting	4	Pedestrian Sitting	4	Pedestrian Sitting	4	Pedestrian Sitting	4	Pedestrian Sitting	7	Pass
14	C	4	Pedestrian Sitting	3	Pedestrian Sitting	3	Pedestrian Sitting	4	Pedestrian Sitting	3	Pedestrian Sitting	8	Pass
	D	4	Pedestrian Sitting	3	Pedestrian Sitting	3	Pedestrian Sitting	4	Pedestrian Sitting	3	Pedestrian Sitting	9	Pass
	E	4	Pedestrian Sitting	3	Pedestrian Sitting	3	Pedestrian Sitting	4	Pedestrian Sitting	3	Pedestrian Sitting	8	Pass
15	C	4	Pedestrian Sitting	3	Pedestrian Sitting	3	Pedestrian Sitting	5	Pedestrian Standing	4	Pedestrian Sitting	11	Pass
	D	4	Pedestrian Sitting	3	Pedestrian Sitting	3	Pedestrian Sitting	5	Pedestrian Standing	4	Pedestrian Sitting	12	Pass
	E	4	Pedestrian Sitting	3	Pedestrian Sitting	3	Pedestrian Sitting	4	Pedestrian Sitting	4	Pedestrian Sitting	10	Pass
16	C	7	Pedestrian Walking	6	Pedestrian Standing	5	Pedestrian Standing	6	Pedestrian Standing	6	Pedestrian Standing	13	Pass
	D	7	Pedestrian Walking	6	Pedestrian Standing	5	Pedestrian Standing	6	Pedestrian Standing	6	Pedestrian Standing	14	Pass
	E	7	Pedestrian Walking	6	Pedestrian Standing	5	Pedestrian Standing	6	Pedestrian Standing	6	Pedestrian Standing	13	Pass
17	C	5	Pedestrian Standing	4	Pedestrian Sitting	3	Pedestrian Sitting	4	Pedestrian Sitting	4	Pedestrian Sitting	8	Pass
	D	4	Pedestrian Sitting	4	Pedestrian Sitting	3	Pedestrian Sitting	4	Pedestrian Sitting	4	Pedestrian Sitting	8	Pass
	E	5	Pedestrian Standing	4	Pedestrian Sitting	3	Pedestrian Sitting	4	Pedestrian Sitting	4	Pedestrian Sitting	8	Pass
18	C	5	Pedestrian Standing	5	Pedestrian Standing	4	Pedestrian Sitting	4	Pedestrian Sitting	5	Pedestrian Standing	9	Pass
	D	5	Pedestrian Standing	5	Pedestrian Standing	4	Pedestrian Sitting	4	Pedestrian Sitting	5	Pedestrian Standing	9	Pass
	E	5	Pedestrian Standing	5	Pedestrian Standing	4	Pedestrian Sitting	4	Pedestrian Sitting	5	Pedestrian Standing	9	Pass

**Seasons**

Spring = September to November

Summer = December to February

Autumn = March to May

Winter = June to August

**Configuration**

C = with the revised landscaping plan

D = with the revised landscaping plan and pergola along pathway

E = with the revised landscaping plan and underplanting

**Wind Comfort Category**

(5% Seasonal and Annual Exceedance)

≤ 4 m/s	Pedestrian Sitting
4 to 6	Pedestrian Standing
6 to 8	Pedestrian Walking
8 to 10	Business Walking
> 10 m/s	Uncomfortable

**Wind Safety Category**

(0.022% Annual Exceedance)

≤ 15 m/s	Pass
> 15 m/s	Exceeded

**Table 2b: Pedestrian Wind Comfort and Safety Conditions (Lawson Criteria)**

Wind Comfort (5% Seasonal Exceedance)												Wind Safety (0.022% Exceedance)	
Location	Configuration	Spring		Summer		Autumn		Winter		Annual		Annual	
		Speed (m/s)	Rating	Speed (m/s)	Rating	Speed (m/s)	Rating	Speed (m/s)	Rating	Speed (m/s)	Rating	Speed (m/s)	Rating
19	C	4	Pedestrian Sitting	4	Pedestrian Sitting	3	Pedestrian Sitting	3	Pedestrian Sitting	4	Pedestrian Sitting	7	Pass
	D	4	Pedestrian Sitting	4	Pedestrian Sitting	3	Pedestrian Sitting	3	Pedestrian Sitting	4	Pedestrian Sitting	7	Pass
	E	4	Pedestrian Sitting	4	Pedestrian Sitting	3	Pedestrian Sitting	3	Pedestrian Sitting	4	Pedestrian Sitting	7	Pass
20	C	3	Pedestrian Sitting	3	Pedestrian Sitting	2	Pedestrian Sitting	3	Pedestrian Sitting	3	Pedestrian Sitting	5	Pass
	D	3	Pedestrian Sitting	3	Pedestrian Sitting	2	Pedestrian Sitting	3	Pedestrian Sitting	3	Pedestrian Sitting	5	Pass
	E	3	Pedestrian Sitting	3	Pedestrian Sitting	2	Pedestrian Sitting	3	Pedestrian Sitting	3	Pedestrian Sitting	5	Pass
21	C	4	Pedestrian Sitting	4	Pedestrian Sitting	3	Pedestrian Sitting	4	Pedestrian Sitting	4	Pedestrian Sitting	8	Pass
	D	4	Pedestrian Sitting	4	Pedestrian Sitting	3	Pedestrian Sitting	3	Pedestrian Sitting	4	Pedestrian Sitting	7	Pass
	E	4	Pedestrian Sitting	4	Pedestrian Sitting	3	Pedestrian Sitting	4	Pedestrian Sitting	4	Pedestrian Sitting	8	Pass
22	C	5	Pedestrian Standing	5	Pedestrian Standing	4	Pedestrian Sitting	4	Pedestrian Sitting	5	Pedestrian Standing	8	Pass
	D	5	Pedestrian Standing	5	Pedestrian Standing	4	Pedestrian Sitting	4	Pedestrian Sitting	5	Pedestrian Standing	8	Pass
	E	5	Pedestrian Standing	5	Pedestrian Standing	4	Pedestrian Sitting	4	Pedestrian Sitting	5	Pedestrian Standing	9	Pass
23	C	3	Pedestrian Sitting	3	Pedestrian Sitting	2	Pedestrian Sitting	3	Pedestrian Sitting	3	Pedestrian Sitting	6	Pass
	D	3	Pedestrian Sitting	3	Pedestrian Sitting	2	Pedestrian Sitting	3	Pedestrian Sitting	3	Pedestrian Sitting	6	Pass
	E	3	Pedestrian Sitting	3	Pedestrian Sitting	2	Pedestrian Sitting	3	Pedestrian Sitting	3	Pedestrian Sitting	6	Pass
24	C	4	Pedestrian Sitting	4	Pedestrian Sitting	3	Pedestrian Sitting	4	Pedestrian Sitting	4	Pedestrian Sitting	8	Pass
	D	4	Pedestrian Sitting	4	Pedestrian Sitting	3	Pedestrian Sitting	4	Pedestrian Sitting	4	Pedestrian Sitting	9	Pass
	E	4	Pedestrian Sitting	4	Pedestrian Sitting	3	Pedestrian Sitting	4	Pedestrian Sitting	4	Pedestrian Sitting	8	Pass

**Seasons**

Spring = September to November

Summer = December to February

Autumn = March to May

Winter = June to August

**Configuration**

C = with the revised landscaping plan

D = with the revised landscaping plan and pergola along pathway

E = with the revised landscaping plan and underplanting

**Wind Comfort Category**

(5% Seasonal and Annual Exceedance)

≤ 4 m/s	Pedestrian Sitting
4 to 6	Pedestrian Standing
6 to 8	Pedestrian Walking
8 to 10	Business Walking
> 10 m/s	Uncomfortable

**Wind Safety Category**

(0.022% Annual Exceedance)

≤ 15 m/s	Pass
> 15 m/s	Exceeded

**Table 2b: Pedestrian Wind Comfort and Safety Conditions (Lawson Criteria)**

Wind Comfort (5% Seasonal Exceedance)												Wind Safety (0.022% Exceedance)	
Location	Configuration	Spring		Summer		Autumn		Winter		Annual		Annual	
		Speed (m/s)	Rating	Speed (m/s)	Rating	Speed (m/s)	Rating	Speed (m/s)	Rating	Speed (m/s)	Rating	Speed (m/s)	Rating
25	C	4	Pedestrian Sitting	4	Pedestrian Sitting	3	Pedestrian Sitting	3	Pedestrian Sitting	4	Pedestrian Sitting	8	Pass
	D	4	Pedestrian Sitting	4	Pedestrian Sitting	3	Pedestrian Sitting	3	Pedestrian Sitting	4	Pedestrian Sitting	8	Pass
	E	4	Pedestrian Sitting	4	Pedestrian Sitting	3	Pedestrian Sitting	3	Pedestrian Sitting	4	Pedestrian Sitting	7	Pass
26	C	5	Pedestrian Standing	5	Pedestrian Standing	4	Pedestrian Sitting	4	Pedestrian Sitting	4	Pedestrian Sitting	9	Pass
	D	5	Pedestrian Standing	5	Pedestrian Standing	4	Pedestrian Sitting	4	Pedestrian Sitting	4	Pedestrian Sitting	10	Pass
	E	5	Pedestrian Standing	4	Pedestrian Sitting	3	Pedestrian Sitting	4	Pedestrian Sitting	4	Pedestrian Sitting	9	Pass
27	C	4	Pedestrian Sitting	4	Pedestrian Sitting	3	Pedestrian Sitting	4	Pedestrian Sitting	4	Pedestrian Sitting	8	Pass
	D	4	Pedestrian Sitting	4	Pedestrian Sitting	3	Pedestrian Sitting	4	Pedestrian Sitting	4	Pedestrian Sitting	8	Pass
	E	4	Pedestrian Sitting	3	Pedestrian Sitting	3	Pedestrian Sitting	3	Pedestrian Sitting	3	Pedestrian Sitting	8	Pass
28	C	5	Pedestrian Standing	4	Pedestrian Sitting	3	Pedestrian Sitting	4	Pedestrian Sitting	4	Pedestrian Sitting	9	Pass
	D	5	Pedestrian Standing	4	Pedestrian Sitting	4	Pedestrian Sitting	4	Pedestrian Sitting	4	Pedestrian Sitting	9	Pass
	E	5	Pedestrian Standing	4	Pedestrian Sitting	4	Pedestrian Sitting	4	Pedestrian Sitting	4	Pedestrian Sitting	9	Pass
29	C	5	Pedestrian Standing	5	Pedestrian Standing	4	Pedestrian Sitting	4	Pedestrian Sitting	5	Pedestrian Standing	9	Pass
	D	5	Pedestrian Standing	5	Pedestrian Standing	4	Pedestrian Sitting	5	Pedestrian Standing	5	Pedestrian Standing	9	Pass
	E	5	Pedestrian Standing	5	Pedestrian Standing	4	Pedestrian Sitting	4	Pedestrian Sitting	5	Pedestrian Standing	9	Pass
30	C	5	Pedestrian Standing	5	Pedestrian Standing	4	Pedestrian Sitting	5	Pedestrian Standing	5	Pedestrian Standing	10	Pass
	D	6	Pedestrian Standing	5	Pedestrian Standing	4	Pedestrian Sitting	5	Pedestrian Standing	5	Pedestrian Standing	10	Pass
	E	5	Pedestrian Standing	5	Pedestrian Standing	4	Pedestrian Sitting	4	Pedestrian Sitting	5	Pedestrian Standing	10	Pass

**Seasons**

Spring = September to November

Summer = December to February

Autumn = March to May

Winter = June to August

**Configuration**

C = with the revised landscaping plan

D = with the revised landscaping plan and pergola along pathway

E = with the revised landscaping plan and underplanting

**Wind Comfort Category**

(5% Seasonal and Annual Exceedance)

≤ 4 m/s

4 to 6

6 to 8

8 to 10

> 10 m/s

Pedestrian Sitting

Pedestrian Standing

Pedestrian Walking

Business Walking

Uncomfortable

**Wind Safety Category**

(0.022% Annual Exceedance)

≤ 15 m/s

> 15 m/s

Pass

Exceeded

**Table 2b: Pedestrian Wind Comfort and Safety Conditions (Lawson Criteria)**

Wind Comfort (5% Seasonal Exceedance)												Wind Safety (0.022% Exceedance)	
Location	Configuration	Spring		Summer		Autumn		Winter		Annual		Annual	
		Speed (m/s)	Rating	Speed (m/s)	Rating	Speed (m/s)	Rating	Speed (m/s)	Rating	Speed (m/s)	Rating	Speed (m/s)	Rating
31	C	6	Pedestrian Standing	6	Pedestrian Standing	5	Pedestrian Standing	5	Pedestrian Standing	5	Pedestrian Standing	11	Pass
	D	8	Pedestrian Walking	8	Pedestrian Walking	6	Pedestrian Standing	6	Pedestrian Standing	7	Pedestrian Walking	13	Pass
	E	6	Pedestrian Standing	7	Pedestrian Walking	5	Pedestrian Standing	4	Pedestrian Sitting	6	Pedestrian Standing	13	Pass
32	C	6	Pedestrian Standing	6	Pedestrian Standing	4	Pedestrian Sitting	5	Pedestrian Standing	5	Pedestrian Standing	11	Pass
	D	6	Pedestrian Standing	5	Pedestrian Standing	4	Pedestrian Sitting	6	Pedestrian Standing	5	Pedestrian Standing	12	Pass
	E	6	Pedestrian Standing	6	Pedestrian Standing	4	Pedestrian Sitting	5	Pedestrian Standing	5	Pedestrian Standing	10	Pass
33	C	6	Pedestrian Standing	6	Pedestrian Standing	4	Pedestrian Sitting	6	Pedestrian Standing	6	Pedestrian Standing	14	Pass
	D	5	Pedestrian Standing	5	Pedestrian Standing	4	Pedestrian Sitting	4	Pedestrian Sitting	5	Pedestrian Standing	10	Pass
	E	6	Pedestrian Standing	5	Pedestrian Standing	4	Pedestrian Sitting	6	Pedestrian Standing	5	Pedestrian Standing	15	Pass
34	C	4	Pedestrian Sitting	3	Pedestrian Sitting	3	Pedestrian Sitting	3	Pedestrian Sitting	3	Pedestrian Sitting	7	Pass
	D	4	Pedestrian Sitting	3	Pedestrian Sitting	3	Pedestrian Sitting	4	Pedestrian Sitting	3	Pedestrian Sitting	7	Pass
	E	3	Pedestrian Sitting	3	Pedestrian Sitting	3	Pedestrian Sitting	3	Pedestrian Sitting	3	Pedestrian Sitting	6	Pass
35	C	4	Pedestrian Sitting	4	Pedestrian Sitting	3	Pedestrian Sitting	4	Pedestrian Sitting	4	Pedestrian Sitting	8	Pass
	D	4	Pedestrian Sitting	4	Pedestrian Sitting	3	Pedestrian Sitting	4	Pedestrian Sitting	4	Pedestrian Sitting	8	Pass
	E	4	Pedestrian Sitting	4	Pedestrian Sitting	3	Pedestrian Sitting	4	Pedestrian Sitting	4	Pedestrian Sitting	8	Pass
36	C	5	Pedestrian Standing	5	Pedestrian Standing	4	Pedestrian Sitting	4	Pedestrian Sitting	5	Pedestrian Standing	9	Pass
	D	5	Pedestrian Standing	5	Pedestrian Standing	4	Pedestrian Sitting	4	Pedestrian Sitting	4	Pedestrian Sitting	9	Pass
	E	5	Pedestrian Standing	5	Pedestrian Standing	4	Pedestrian Sitting	4	Pedestrian Sitting	5	Pedestrian Standing	9	Pass

**Seasons**

Spring = September to November

Summer = December to February

Autumn = March to May

Winter = June to August

**Configuration**

C = with the revised landscaping plan

D = with the revised landscaping plan and pergola along pathway

E = with the revised landscaping plan and underplanting

**Wind Comfort Category**

(5% Seasonal and Annual Exceedance)

≤ 4 m/s	Pedestrian Sitting
4 to 6	Pedestrian Standing
6 to 8	Pedestrian Walking
8 to 10	Business Walking
> 10 m/s	Uncomfortable

**Wind Safety Category**

(0.022% Annual Exceedance)

≤ 15 m/s	Pass
> 15 m/s	Exceeded

**Table 2b: Pedestrian Wind Comfort and Safety Conditions (Lawson Criteria)**

Wind Comfort (5% Seasonal Exceedance)												Wind Safety (0.022% Exceedance)	
Location	Configuration	Spring		Summer		Autumn		Winter		Annual		Annual	
		Speed (m/s)	Rating	Speed (m/s)	Rating	Speed (m/s)	Rating	Speed (m/s)	Rating	Speed (m/s)	Rating	Speed (m/s)	Rating
37	C	6	Pedestrian Standing	6	Pedestrian Standing	5	Pedestrian Standing	6	Pedestrian Standing	6	Pedestrian Standing	12	Pass
	D	6	Pedestrian Standing	6	Pedestrian Standing	5	Pedestrian Standing	6	Pedestrian Standing	6	Pedestrian Standing	12	Pass
	E	6	Pedestrian Standing	6	Pedestrian Standing	5	Pedestrian Standing	6	Pedestrian Standing	6	Pedestrian Standing	12	Pass
38	C	6	Pedestrian Standing	5	Pedestrian Standing	5	Pedestrian Standing	5	Pedestrian Standing	5	Pedestrian Standing	11	Pass
	D	6	Pedestrian Standing	5	Pedestrian Standing	4	Pedestrian Sitting	5	Pedestrian Standing	5	Pedestrian Standing	10	Pass
	E	5	Pedestrian Standing	5	Pedestrian Standing	4	Pedestrian Sitting	5	Pedestrian Standing	5	Pedestrian Standing	10	Pass
39	C	6	Pedestrian Standing	4	Pedestrian Sitting	4	Pedestrian Sitting	6	Pedestrian Standing	5	Pedestrian Standing	14	Pass
	D	6	Pedestrian Standing	4	Pedestrian Sitting	4	Pedestrian Sitting	6	Pedestrian Standing	5	Pedestrian Standing	13	Pass
	E	6	Pedestrian Standing	4	Pedestrian Sitting	4	Pedestrian Sitting	6	Pedestrian Standing	5	Pedestrian Standing	13	Pass
40	C	5	Pedestrian Standing	4	Pedestrian Sitting	4	Pedestrian Sitting	5	Pedestrian Standing	5	Pedestrian Standing	12	Pass
	D	5	Pedestrian Standing	4	Pedestrian Sitting	4	Pedestrian Sitting	5	Pedestrian Standing	5	Pedestrian Standing	13	Pass
	E	5	Pedestrian Standing	4	Pedestrian Sitting	4	Pedestrian Sitting	5	Pedestrian Standing	5	Pedestrian Standing	12	Pass
41	C	6	Pedestrian Standing	6	Pedestrian Standing	5	Pedestrian Standing	5	Pedestrian Standing	6	Pedestrian Standing	11	Pass
	D	6	Pedestrian Standing	6	Pedestrian Standing	5	Pedestrian Standing	5	Pedestrian Standing	6	Pedestrian Standing	11	Pass
	E	6	Pedestrian Standing	6	Pedestrian Standing	5	Pedestrian Standing	5	Pedestrian Standing	6	Pedestrian Standing	11	Pass
42	C	5	Pedestrian Standing	5	Pedestrian Standing	3	Pedestrian Sitting	4	Pedestrian Sitting	4	Pedestrian Sitting	8	Pass
	D	5	Pedestrian Standing	5	Pedestrian Standing	3	Pedestrian Sitting	4	Pedestrian Sitting	4	Pedestrian Sitting	8	Pass
	E	5	Pedestrian Standing	5	Pedestrian Standing	3	Pedestrian Sitting	4	Pedestrian Sitting	4	Pedestrian Sitting	8	Pass

**Seasons**

Spring = September to November

Summer = December to February

Autumn = March to May

Winter = June to August

**Configuration**

C = with the revised landscaping plan

D = with the revised landscaping plan and pergola along pathway

E = with the revised landscaping plan and underplanting

**Wind Comfort Category**

(5% Seasonal and Annual Exceedance)

≤ 4 m/s

4 to 6

6 to 8

8 to 10

> 10 m/s

Pedestrian Sitting

Pedestrian Standing

Pedestrian Walking

Business Walking

Uncomfortable

**Wind Safety Category**

(0.022% Annual Exceedance)

≤ 15 m/s

> 15 m/s

Pass

Exceeded

**Table 2b: Pedestrian Wind Comfort and Safety Conditions (Lawson Criteria)**

Wind Comfort (5% Seasonal Exceedance)												Wind Safety (0.022% Exceedance)	
Location	Configuration	Spring		Summer		Autumn		Winter		Annual		Annual	
		Speed (m/s)	Rating	Speed (m/s)	Rating	Speed (m/s)	Rating	Speed (m/s)	Rating	Speed (m/s)	Rating	Speed (m/s)	Rating
43	C	6	Pedestrian Standing	6	Pedestrian Standing	5	Pedestrian Standing	5	Pedestrian Standing	6	Pedestrian Standing	11	Pass
	D	6	Pedestrian Standing	6	Pedestrian Standing	5	Pedestrian Standing	5	Pedestrian Standing	6	Pedestrian Standing	11	Pass
	E	6	Pedestrian Standing	6	Pedestrian Standing	5	Pedestrian Standing	5	Pedestrian Standing	6	Pedestrian Standing	11	Pass
44	C	5	Pedestrian Standing	5	Pedestrian Standing	4	Pedestrian Sitting	5	Pedestrian Standing	5	Pedestrian Standing	10	Pass
	D	5	Pedestrian Standing	5	Pedestrian Standing	4	Pedestrian Sitting	5	Pedestrian Standing	5	Pedestrian Standing	10	Pass
	E	5	Pedestrian Standing	5	Pedestrian Standing	4	Pedestrian Sitting	5	Pedestrian Standing	5	Pedestrian Standing	10	Pass
45	C	6	Pedestrian Standing	6	Pedestrian Standing	4	Pedestrian Sitting	5	Pedestrian Standing	5	Pedestrian Standing	10	Pass
	D	6	Pedestrian Standing	6	Pedestrian Standing	4	Pedestrian Sitting	5	Pedestrian Standing	5	Pedestrian Standing	10	Pass
	E	6	Pedestrian Standing	6	Pedestrian Standing	4	Pedestrian Sitting	5	Pedestrian Standing	5	Pedestrian Standing	10	Pass
46	C	6	Pedestrian Standing	5	Pedestrian Standing	5	Pedestrian Standing	6	Pedestrian Standing	5	Pedestrian Standing	11	Pass
	D	6	Pedestrian Standing	5	Pedestrian Standing	5	Pedestrian Standing	5	Pedestrian Standing	5	Pedestrian Standing	11	Pass
	E	6	Pedestrian Standing	5	Pedestrian Standing	5	Pedestrian Standing	6	Pedestrian Standing	5	Pedestrian Standing	11	Pass
47	C	7	Pedestrian Walking	7	Pedestrian Walking	5	Pedestrian Standing	6	Pedestrian Standing	6	Pedestrian Standing	13	Pass
	D	7	Pedestrian Walking	6	Pedestrian Standing	5	Pedestrian Standing	6	Pedestrian Standing	6	Pedestrian Standing	13	Pass
	E	7	Pedestrian Walking	6	Pedestrian Standing	5	Pedestrian Standing	6	Pedestrian Standing	6	Pedestrian Standing	13	Pass
48	C	7	Pedestrian Walking	6	Pedestrian Standing	5	Pedestrian Standing	7	Pedestrian Walking	6	Pedestrian Standing	15	Pass
	D	7	Pedestrian Walking	6	Pedestrian Standing	5	Pedestrian Standing	7	Pedestrian Walking	6	Pedestrian Standing	15	Pass
	E	7	Pedestrian Walking	6	Pedestrian Standing	5	Pedestrian Standing	7	Pedestrian Walking	6	Pedestrian Standing	15	Pass

**Seasons**

Spring = September to November

Summer = December to February

Autumn = March to May

Winter = June to August

**Configuration**

C = with the revised landscaping plan

D = with the revised landscaping plan and pergola along pathway

E = with the revised landscaping plan and underplanting

**Wind Comfort Category**

(5% Seasonal and Annual Exceedance)

≤ 4 m/s

4 to 6

6 to 8

8 to 10

> 10 m/s

Pedestrian Sitting

Pedestrian Standing

Pedestrian Walking

Business Walking

Uncomfortable

**Wind Safety Category**

(0.022% Annual Exceedance)

≤ 15 m/s

> 15 m/s

Pass

Exceeded

**Table 2b: Pedestrian Wind Comfort and Safety Conditions (Lawson Criteria)**

Wind Comfort (5% Seasonal Exceedance)												Wind Safety (0.022% Exceedance)	
Location	Configuration	Spring		Summer		Autumn		Winter		Annual		Annual	
		Speed (m/s)	Rating	Speed (m/s)	Rating	Speed (m/s)	Rating	Speed (m/s)	Rating	Speed (m/s)	Rating	Speed (m/s)	Rating
49	C	7	Pedestrian Walking	6	Pedestrian Standing	5	Pedestrian Standing	6	Pedestrian Standing	6	Pedestrian Standing	12	Pass
	D	7	Pedestrian Walking	6	Pedestrian Standing	5	Pedestrian Standing	6	Pedestrian Standing	6	Pedestrian Standing	12	Pass
	E	6	Pedestrian Standing	6	Pedestrian Standing	5	Pedestrian Standing	6	Pedestrian Standing	6	Pedestrian Standing	12	Pass
50	C	5	Pedestrian Standing	5	Pedestrian Standing	4	Pedestrian Sitting	4	Pedestrian Sitting	4	Pedestrian Sitting	8	Pass
	D	5	Pedestrian Standing	5	Pedestrian Standing	4	Pedestrian Sitting	4	Pedestrian Sitting	4	Pedestrian Sitting	8	Pass
	E	5	Pedestrian Standing	5	Pedestrian Standing	4	Pedestrian Sitting	4	Pedestrian Sitting	4	Pedestrian Sitting	8	Pass
51	C	7	Pedestrian Walking	6	Pedestrian Standing	5	Pedestrian Standing	5	Pedestrian Standing	6	Pedestrian Standing	11	Pass
	D	6	Pedestrian Standing	6	Pedestrian Standing	5	Pedestrian Standing	5	Pedestrian Standing	6	Pedestrian Standing	11	Pass
	E	6	Pedestrian Standing	6	Pedestrian Standing	5	Pedestrian Standing	5	Pedestrian Standing	6	Pedestrian Standing	11	Pass
52	C	5	Pedestrian Standing	4	Pedestrian Sitting	4	Pedestrian Sitting	4	Pedestrian Sitting	4	Pedestrian Sitting	8	Pass
	D	6	Pedestrian Standing	6	Pedestrian Standing	5	Pedestrian Standing	5	Pedestrian Standing	6	Pedestrian Standing	11	Pass
	E	5	Pedestrian Standing	5	Pedestrian Standing	4	Pedestrian Sitting	4	Pedestrian Sitting	4	Pedestrian Sitting	9	Pass
53	C	5	Pedestrian Standing	5	Pedestrian Standing	4	Pedestrian Sitting	4	Pedestrian Sitting	5	Pedestrian Standing	10	Pass
	D	5	Pedestrian Standing	5	Pedestrian Standing	4	Pedestrian Sitting	5	Pedestrian Standing	5	Pedestrian Standing	10	Pass
	E	5	Pedestrian Standing	5	Pedestrian Standing	4	Pedestrian Sitting	4	Pedestrian Sitting	5	Pedestrian Standing	10	Pass
54	C	5	Pedestrian Standing	4	Pedestrian Sitting	4	Pedestrian Sitting	5	Pedestrian Standing	5	Pedestrian Standing	11	Pass
	D	5	Pedestrian Standing	4	Pedestrian Sitting	4	Pedestrian Sitting	5	Pedestrian Standing	4	Pedestrian Sitting	11	Pass
	E	5	Pedestrian Standing	4	Pedestrian Sitting	4	Pedestrian Sitting	5	Pedestrian Standing	5	Pedestrian Standing	11	Pass

**Seasons**

Spring = September to November

Summer = December to February

Autumn = March to May

Winter = June to August

**Configuration**

C = with the revised landscaping plan

D = with the revised landscaping plan and pergola along pathway

E = with the revised landscaping plan and underplanting

**Wind Comfort Category**

(5% Seasonal and Annual Exceedance)

≤ 4 m/s

4 to 6

6 to 8

8 to 10

> 10 m/s

Pedestrian Sitting

Pedestrian Standing

Pedestrian Walking

Business Walking

Uncomfortable

**Wind Safety Category**

(0.022% Annual Exceedance)

≤ 15 m/s

> 15 m/s

Pass

Exceeded



**Table 2b: Pedestrian Wind Comfort and Safety Conditions (Lawson Criteria)**

Wind Comfort (5% Seasonal Exceedance)												Wind Safety (0.022% Exceedance)	
Location	Configuration	Spring		Summer		Autumn		Winter		Annual		Annual	
		Speed (m/s)	Rating	Speed (m/s)	Rating	Speed (m/s)	Rating	Speed (m/s)	Rating	Speed (m/s)	Rating	Speed (m/s)	Rating
55	C	5	Pedestrian Standing	4	Pedestrian Sitting	4	Pedestrian Sitting	5	Pedestrian Standing	4	Pedestrian Sitting	11	Pass
	D	5	Pedestrian Standing	4	Pedestrian Sitting	4	Pedestrian Sitting	5	Pedestrian Standing	5	Pedestrian Standing	10	Pass
	E	5	Pedestrian Standing	4	Pedestrian Sitting	4	Pedestrian Sitting	5	Pedestrian Standing	4	Pedestrian Sitting	10	Pass
56	C	5	Pedestrian Standing	5	Pedestrian Standing	4	Pedestrian Sitting	5	Pedestrian Standing	5	Pedestrian Standing	10	Pass
	D	6	Pedestrian Standing	5	Pedestrian Standing	4	Pedestrian Sitting	5	Pedestrian Standing	5	Pedestrian Standing	10	Pass
	E	5	Pedestrian Standing	5	Pedestrian Standing	4	Pedestrian Sitting	5	Pedestrian Standing	5	Pedestrian Standing	10	Pass
57	C	5	Pedestrian Standing	4	Pedestrian Sitting	4	Pedestrian Sitting	5	Pedestrian Standing	4	Pedestrian Sitting	9	Pass
	D	5	Pedestrian Standing	4	Pedestrian Sitting	4	Pedestrian Sitting	5	Pedestrian Standing	4	Pedestrian Sitting	9	Pass
	E	5	Pedestrian Standing	4	Pedestrian Sitting	4	Pedestrian Sitting	5	Pedestrian Standing	4	Pedestrian Sitting	9	Pass
58	C	5	Pedestrian Standing	4	Pedestrian Sitting	4	Pedestrian Sitting	5	Pedestrian Standing	4	Pedestrian Sitting	10	Pass
	D	5	Pedestrian Standing	4	Pedestrian Sitting	4	Pedestrian Sitting	5	Pedestrian Standing	5	Pedestrian Standing	10	Pass
	E	5	Pedestrian Standing	4	Pedestrian Sitting	4	Pedestrian Sitting	5	Pedestrian Standing	4	Pedestrian Sitting	10	Pass
59	C	6	Pedestrian Standing	5	Pedestrian Standing	4	Pedestrian Sitting	5	Pedestrian Standing	5	Pedestrian Standing	11	Pass
	D	6	Pedestrian Standing	5	Pedestrian Standing	4	Pedestrian Sitting	5	Pedestrian Standing	5	Pedestrian Standing	10	Pass
	E	6	Pedestrian Standing	5	Pedestrian Standing	4	Pedestrian Sitting	5	Pedestrian Standing	5	Pedestrian Standing	11	Pass
60	C	6	Pedestrian Standing	5	Pedestrian Standing	4	Pedestrian Sitting	5	Pedestrian Standing	5	Pedestrian Standing	12	Pass
	D	6	Pedestrian Standing	5	Pedestrian Standing	4	Pedestrian Sitting	5	Pedestrian Standing	5	Pedestrian Standing	12	Pass
	E	6	Pedestrian Standing	5	Pedestrian Standing	4	Pedestrian Sitting	5	Pedestrian Standing	5	Pedestrian Standing	12	Pass

**Seasons**

Spring = September to November

Summer = December to February

Autumn = March to May

Winter = June to August

**Configuration**

C = with the revised landscaping plan

D = with the revised landscaping plan and pergola along pathway

E = with the revised landscaping plan and underplanting

**Wind Comfort Category**

(5% Seasonal and Annual Exceedance)

≤ 4 m/s

4 to 6

6 to 8

8 to 10

> 10 m/s

Pedestrian Sitting

Pedestrian Standing

Pedestrian Walking

Business Walking

Uncomfortable

**Wind Safety Category**

(0.022% Annual Exceedance)

≤ 15 m/s

> 15 m/s

Pass

Exceeded

**Table 2b: Pedestrian Wind Comfort and Safety Conditions (Lawson Criteria)**

Wind Comfort (5% Seasonal Exceedance)												Wind Safety (0.022% Exceedance)	
Location	Configuration	Spring		Summer		Autumn		Winter		Annual		Annual	
		Speed (m/s)	Rating	Speed (m/s)	Rating	Speed (m/s)	Rating	Speed (m/s)	Rating	Speed (m/s)	Rating	Speed (m/s)	Rating
61	C	6	Pedestrian Standing	5	Pedestrian Standing	4	Pedestrian Sitting	5	Pedestrian Standing	5	Pedestrian Standing	10	Pass
	D	6	Pedestrian Standing	5	Pedestrian Standing	4	Pedestrian Sitting	5	Pedestrian Standing	5	Pedestrian Standing	10	Pass
	E	6	Pedestrian Standing	5	Pedestrian Standing	4	Pedestrian Sitting	5	Pedestrian Standing	5	Pedestrian Standing	11	Pass
62	C	6	Pedestrian Standing	5	Pedestrian Standing	5	Pedestrian Standing	5	Pedestrian Standing	5	Pedestrian Standing	11	Pass
	D	6	Pedestrian Standing	5	Pedestrian Standing	5	Pedestrian Standing	5	Pedestrian Standing	5	Pedestrian Standing	11	Pass
	E	6	Pedestrian Standing	5	Pedestrian Standing	5	Pedestrian Standing	5	Pedestrian Standing	5	Pedestrian Standing	11	Pass
63	C	7	Pedestrian Walking	6	Pedestrian Standing	6	Pedestrian Standing	6	Pedestrian Standing	6	Pedestrian Standing	13	Pass
	D	7	Pedestrian Walking	7	Pedestrian Walking	6	Pedestrian Standing	6	Pedestrian Standing	6	Pedestrian Standing	13	Pass
	E	7	Pedestrian Walking	6	Pedestrian Standing	6	Pedestrian Standing	6	Pedestrian Standing	6	Pedestrian Standing	13	Pass
64	C	7	Pedestrian Walking	6	Pedestrian Standing	5	Pedestrian Standing	6	Pedestrian Standing	6	Pedestrian Standing	13	Pass
	D	7	Pedestrian Walking	6	Pedestrian Standing	5	Pedestrian Standing	6	Pedestrian Standing	6	Pedestrian Standing	13	Pass
	E	7	Pedestrian Walking	6	Pedestrian Standing	5	Pedestrian Standing	6	Pedestrian Standing	6	Pedestrian Standing	13	Pass
65	C	8	Pedestrian Walking	8	Pedestrian Walking	7	Pedestrian Walking	7	Pedestrian Walking	8	Pedestrian Walking	15	Pass
	D	9	Business Walking	8	Pedestrian Walking	7	Pedestrian Walking	7	Pedestrian Walking	8	Pedestrian Walking	16	Exceeded
	E	8	Pedestrian Walking	8	Pedestrian Walking	7	Pedestrian Walking	7	Pedestrian Walking	8	Pedestrian Walking	16	Exceeded
66	C	6	Pedestrian Standing	5	Pedestrian Standing	4	Pedestrian Sitting	5	Pedestrian Standing	5	Pedestrian Standing	12	Pass
	D	6	Pedestrian Standing	6	Pedestrian Standing	5	Pedestrian Standing	6	Pedestrian Standing	6	Pedestrian Standing	12	Pass
	E	5	Pedestrian Standing	5	Pedestrian Standing	4	Pedestrian Sitting	5	Pedestrian Standing	5	Pedestrian Standing	10	Pass

**Seasons**

Spring = September to November

Summer = December to February

Autumn = March to May

Winter = June to August

**Configuration**

C = with the revised landscaping plan

D = with the revised landscaping plan and pergola along pathway

E = with the revised landscaping plan and underplanting

**Wind Comfort Category**

(5% Seasonal and Annual Exceedance)

≤ 4 m/s

4 to 6

6 to 8

8 to 10

> 10 m/s

Pedestrian Sitting

Pedestrian Standing

Pedestrian Walking

Business Walking

Uncomfortable

**Wind Safety Category**

(0.022% Annual Exceedance)

≤ 15 m/s

> 15 m/s

Pass

Exceeded

**Table 2b: Pedestrian Wind Comfort and Safety Conditions (Lawson Criteria)**

Wind Comfort (5% Seasonal Exceedance)												Wind Safety (0.022% Exceedance)	
Location	Configuration	Spring		Summer		Autumn		Winter		Annual		Annual	
		Speed (m/s)	Rating	Speed (m/s)	Rating	Speed (m/s)	Rating	Speed (m/s)	Rating	Speed (m/s)	Rating	Speed (m/s)	Rating
67	C	5	Pedestrian Standing	5	Pedestrian Standing	4	Pedestrian Sitting	4	Pedestrian Sitting	5	Pedestrian Standing	9	Pass
	D	5	Pedestrian Standing	5	Pedestrian Standing	4	Pedestrian Sitting	4	Pedestrian Sitting	5	Pedestrian Standing	9	Pass
	E	5	Pedestrian Standing	5	Pedestrian Standing	4	Pedestrian Sitting	4	Pedestrian Sitting	5	Pedestrian Standing	9	Pass
68	C	6	Pedestrian Standing	5	Pedestrian Standing	4	Pedestrian Sitting	5	Pedestrian Standing	5	Pedestrian Standing	13	Pass
	D	6	Pedestrian Standing	5	Pedestrian Standing	4	Pedestrian Sitting	5	Pedestrian Standing	5	Pedestrian Standing	12	Pass
	E	6	Pedestrian Standing	5	Pedestrian Standing	4	Pedestrian Sitting	5	Pedestrian Standing	5	Pedestrian Standing	12	Pass
69	C	7	Pedestrian Walking	6	Pedestrian Standing	5	Pedestrian Standing	5	Pedestrian Standing	6	Pedestrian Standing	11	Pass
	D	7	Pedestrian Walking	7	Pedestrian Walking	5	Pedestrian Standing	5	Pedestrian Standing	6	Pedestrian Standing	12	Pass
	E	6	Pedestrian Standing	6	Pedestrian Standing	4	Pedestrian Sitting	4	Pedestrian Sitting	5	Pedestrian Standing	11	Pass
70	C	8	Pedestrian Walking	7	Pedestrian Walking	6	Pedestrian Standing	6	Pedestrian Standing	7	Pedestrian Walking	14	Pass
	D	8	Pedestrian Walking	7	Pedestrian Walking	6	Pedestrian Standing	6	Pedestrian Standing	7	Pedestrian Walking	14	Pass
	E	6	Pedestrian Standing	6	Pedestrian Standing	5	Pedestrian Standing	6	Pedestrian Standing	6	Pedestrian Standing	12	Pass
71	C	7	Pedestrian Walking	6	Pedestrian Standing	5	Pedestrian Standing	6	Pedestrian Standing	6	Pedestrian Standing	13	Pass
	D	7	Pedestrian Walking	6	Pedestrian Standing	6	Pedestrian Standing	6	Pedestrian Standing	6	Pedestrian Standing	14	Pass
	E	6	Pedestrian Standing	6	Pedestrian Standing	5	Pedestrian Standing	5	Pedestrian Standing	6	Pedestrian Standing	12	Pass
72	C	8	Pedestrian Walking	7	Pedestrian Walking	6	Pedestrian Standing	7	Pedestrian Walking	7	Pedestrian Walking	16	Exceeded
	D	6	Pedestrian Standing	6	Pedestrian Standing	4	Pedestrian Sitting	5	Pedestrian Standing	5	Pedestrian Standing	10	Pass
	E	7	Pedestrian Walking	5	Pedestrian Standing	5	Pedestrian Standing	7	Pedestrian Walking	6	Pedestrian Standing	16	Exceeded

**Seasons**

Spring = September to November

Summer = December to February

Autumn = March to May

Winter = June to August

**Configuration**

C = with the revised landscaping plan

D = with the revised landscaping plan and pergola along pathway

E = with the revised landscaping plan and underplanting

**Wind Comfort Category**

(5% Seasonal and Annual Exceedance)

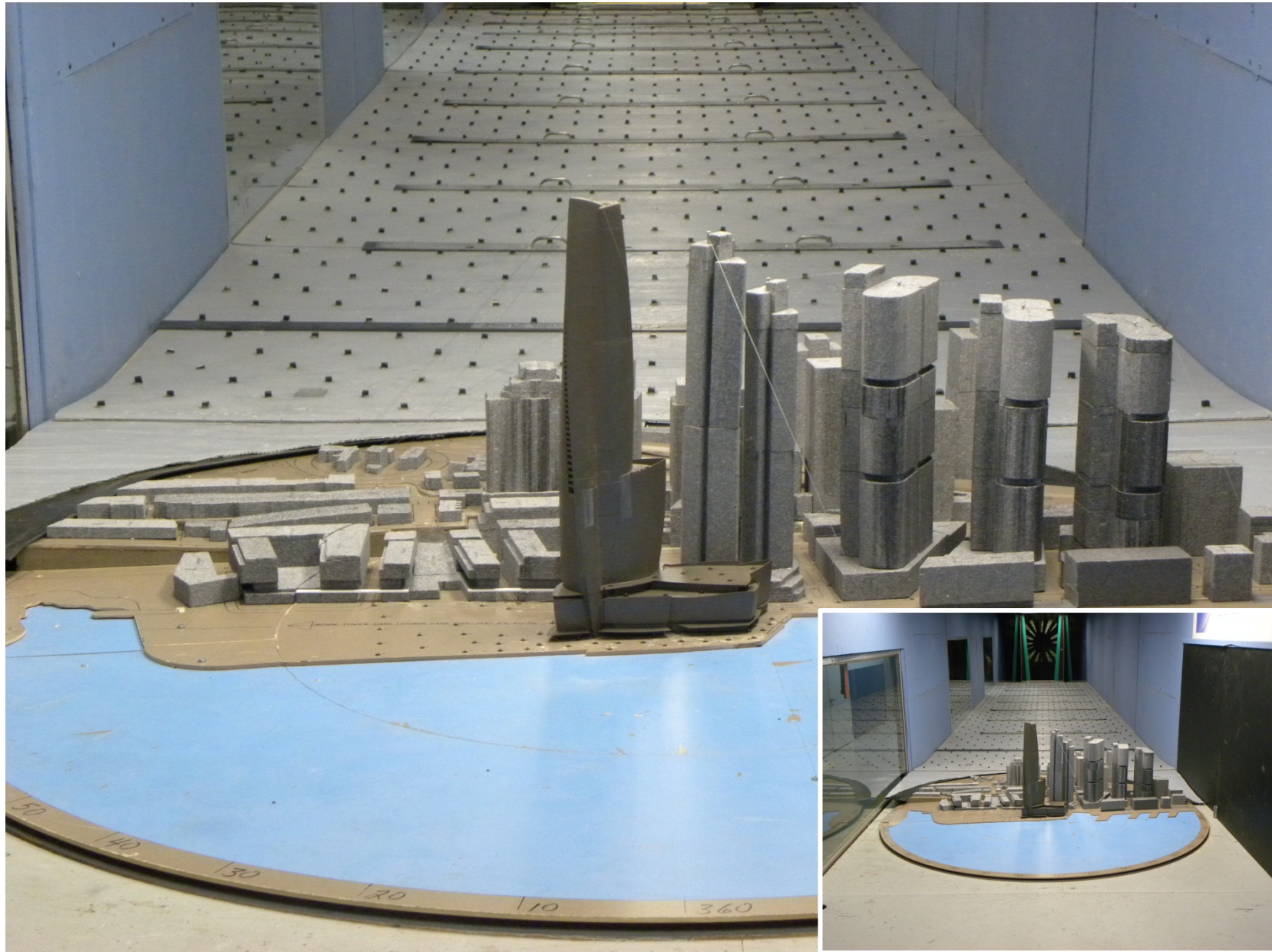
≤ 4 m/s	Pedestrian Sitting
4 to 6	Pedestrian Standing
6 to 8	Pedestrian Walking
8 to 10	Business Walking
> 10 m/s	Uncomfortable

**Wind Safety Category**

(0.022% Annual Exceedance)

≤ 15 m/s	Pass
> 15 m/s	Exceeded

# FIGURES



# **Wind Tunnel Study Model** **No Landscaping**

Crown Tower – Sydney, Australia

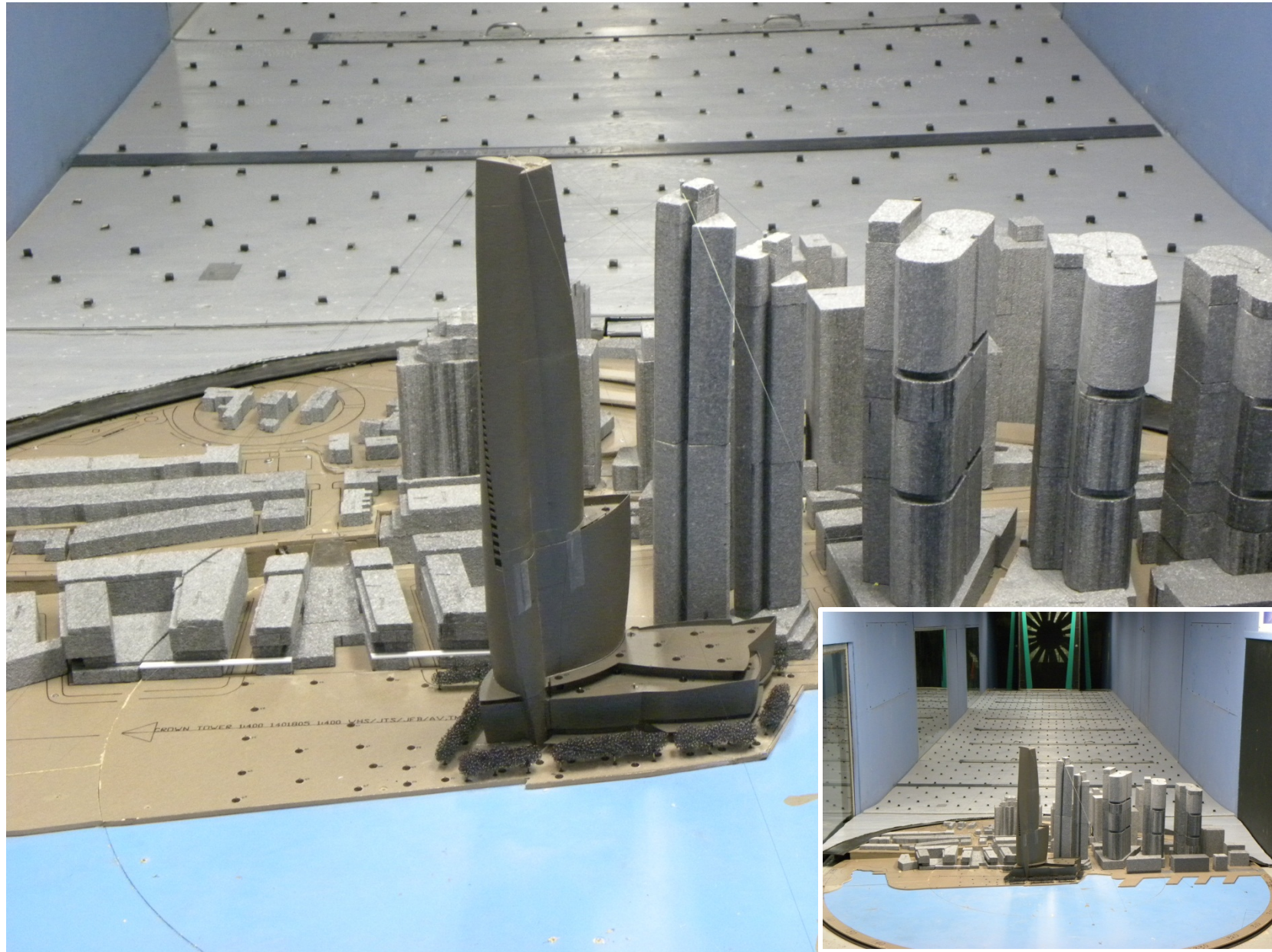
Figure No. 1a

Project #1401805

Date: June 24, 2014







## Wind Tunnel Study Model Landscaping

Crown Tower – Sydney, Australia

Figure No. 1b

Project #1401805

Date: June 24, 2014







# **Wind Tunnel Study Model** **Revised Landscaping**

Crown Tower – Sydney, Australia

Figure No. 1c

Project #1401805

Date: July 18, 2014

