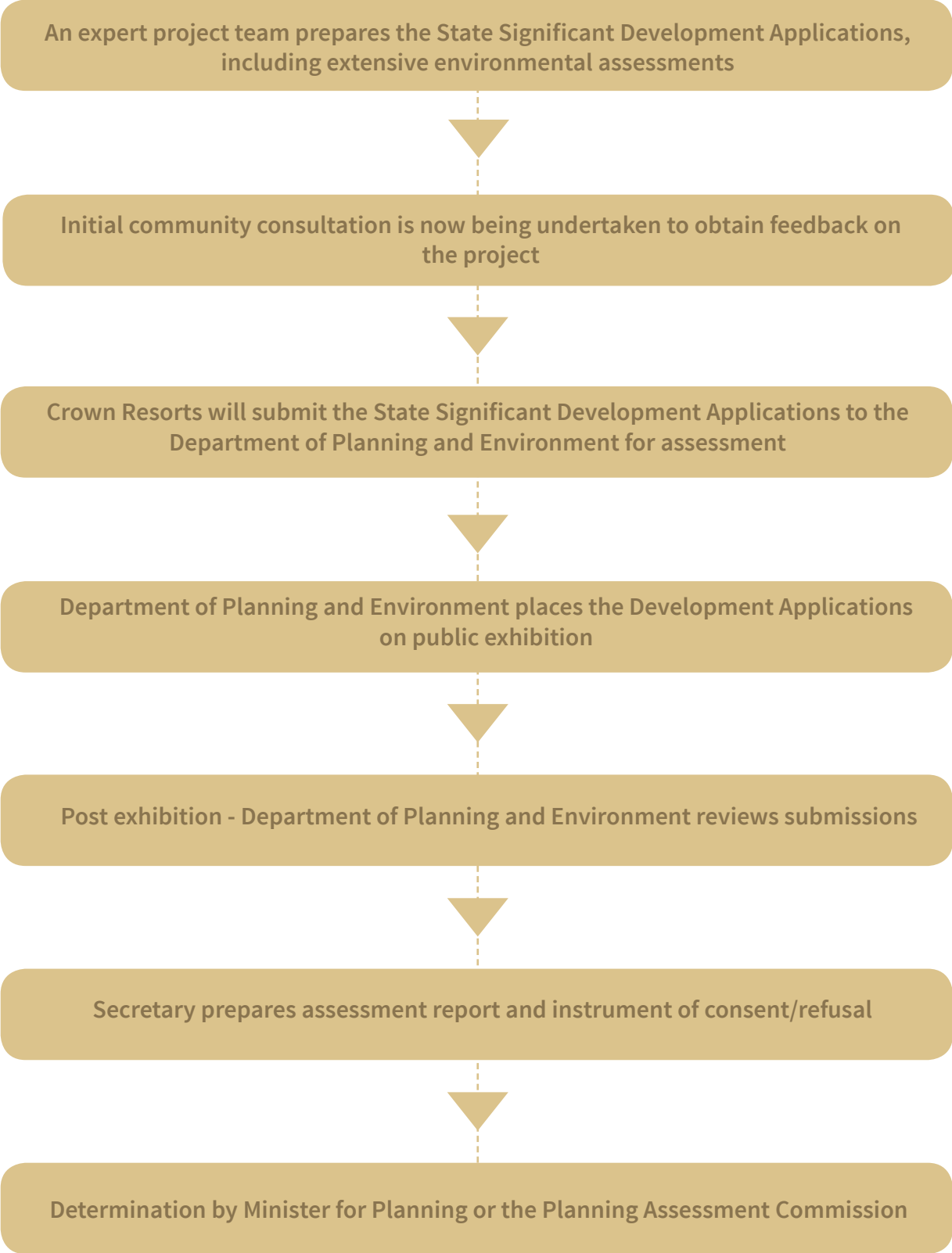


PLANNING PROCESS FLOWCHART

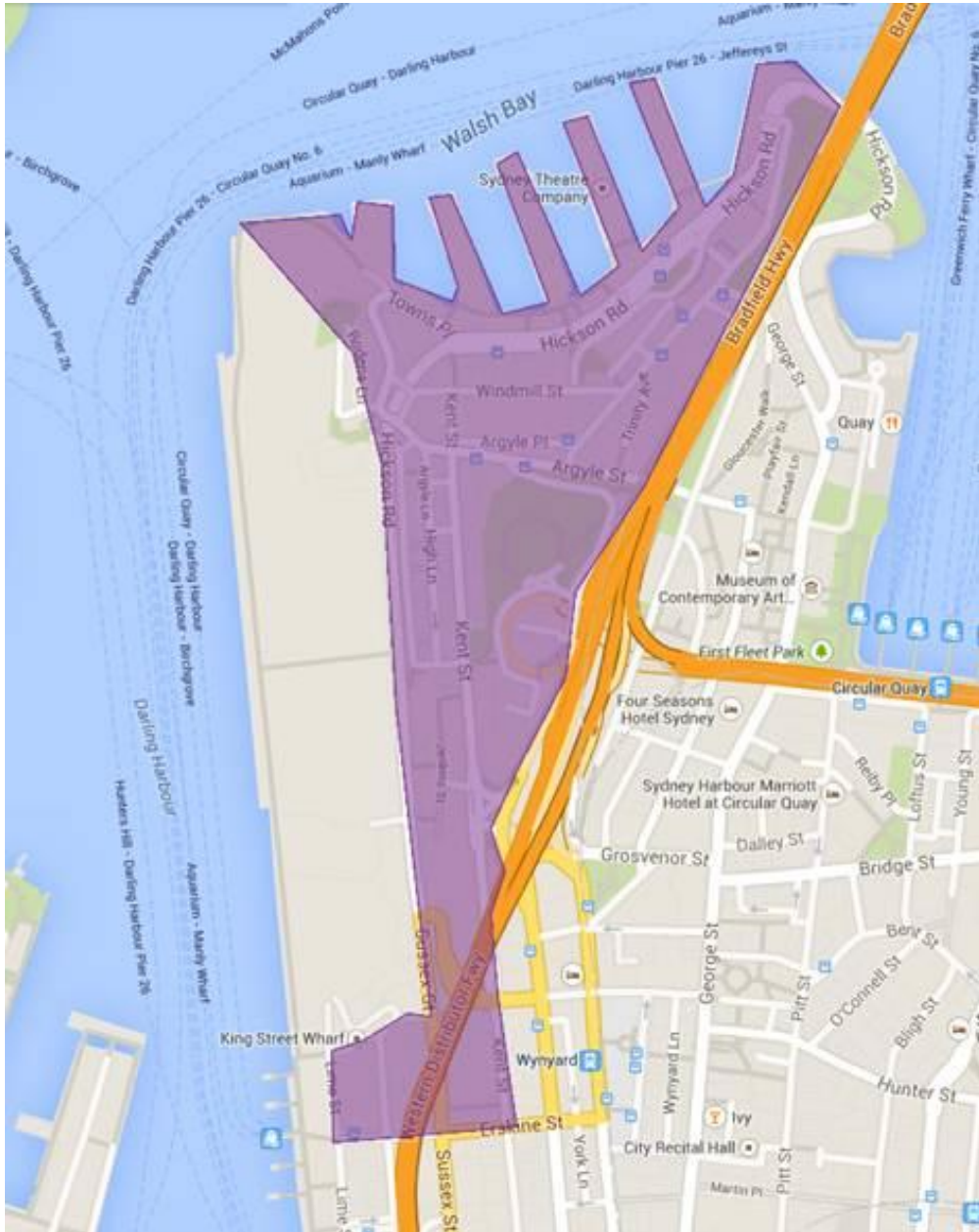


HOW WILL THE HOTEL ACHIEVE A WORLD'S BEST PRACTICE SUSTAINABILITY RATING?

The development incorporates a number of sustainability features that will contribute to achieving a Green Star rating, based on world's best practice for hotels.

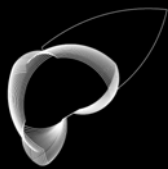
- **97%** of all construction waste and **80%** of all operational waste will be diverted from landfill
- Implementation of extensive energy metering and sub-metering
- Using low embodied carbon practices for materials such as concrete and steel
- Water re-use and black-water treatment systems will be used for the Barangaroo South Precinct, being developed by Lend Lease
- Villas and residential apartments will have operable windows and terraces to enable natural ventilation
- High performance glazing will provide better thermal comfort and a reduction in overall energy consumption

8.0 Attachment B – Postcard distribution



9.0 Attachment C – Planning Focus Group Meeting presentation slides

Crown Sydney Planning Focus Group Briefing April 2015



Crown Employing Thousands of Australian's

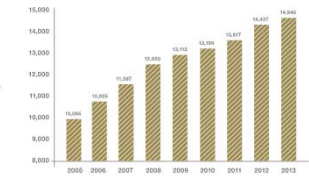


Employment for approx.
8,800 people at Crown Melbourne

Employment for approx.
6,100 people at Crown Perth

- Crown Melbourne is the largest single-site private sector employer in Australia.
- Crown Perth is the largest single-site private sector employer in Western Australia.

People employed at Crown's Melbourne and Perth resorts



Planning Focus Group Briefing: Crown Sydney, Barangaroo

4



Crown Resorts



Planning Focus Group Briefing: Crown Sydney, Barangaroo

2

JBA urban development services



Crown Investing in our People



\$10 million
purpose-built training facility

Employment for approx.
6,000 apprentices and trainees

Our staff are our most valuable asset:

- Developed a purpose-built \$10 million training facility, which has trained over 14,000 employees in the last 13 years.
- Graduated over 6,000 apprentices and trainees.
- Recipient of major training awards
- State and Federal Government awards for employment, training and diversity including the Australian and Victorian Employer of the Year Award for 2013.



Australian Employer of the Year 2013



Victorian Employer of the Year Award 2013

Planning Focus Group Briefing: Crown Sydney, Barangaroo

5



Crown Contribution to Australia's Economy



\$2.1 billion

Annual contribution to the Victorian economy

Economic Contribution

- Crown Melbourne's estimated contribution to the Victorian economy – \$2.1 billion per annum of value-added.
- Crown Perth's estimated contribution to the WA economy – \$800 million per annum of value-added.

\$800 million

Annual contribution to the Western Australian economy

Tax Contribution

- Taxes attributable to Crown's Australian resorts for FY16 were \$700 million.
- Revenue from International Visitors
- More than a third revenue is estimated to be generated from international visitors.

Planning Focus Group Briefing: Crown Sydney, Barangaroo

3

JBA urban development services



Crown a Leader in Indigenous Employment



2,000
job opportunities for Indigenous Australians by 2021

- Crown has been a leader in the Indigenous employment market and its Indigenous Employment Strategy is considered a best practice model.
- Crown has received major industry, State and Federal Government awards for its Indigenous employment programs.

Planning Focus Group Briefing: Crown Sydney, Barangaroo

6



Crown Resorts Foundation



\$200 million contribution over 10 years

As the philanthropic arm of Crown Resorts, the Foundation will engage with and provide financial support to programs with demonstrated success in the areas of community welfare, education, health care and research, the arts and the environment.

Planning Focus Group Briefing: Crown Sydney, Barangaroo

7

Crown Awards & Accolades

Crown and its integrated resorts have won over 150 awards in just a few years, from local to regional and international awards, in recognition of their excellence in IR operation, corporate governance and corporate social responsibility.



Forbes Asia
"Fabulous 50"
2013 & 2014

International Gaming Awards
2014 – "Casino VIP Room of the Year"

Forbes Travel Guide 2014
City of Dreams: 5-star for restaurant & SPA
Alma Macau: 5-star for lodging, restaurant & SPA

International Gaming Awards
– 3 consecutive years at International Gaming Awards:
– Best of Operator Australasia
– Integrated Resort of the Year, 2015
– Best Customer Experience of the Year

TTG Asia Travel Awards 2010 – City of Dreams, "Best Integrated Resort"

Michelin Starred Restaurants 2014
City of Dreams:
– The Tasting Room
– Jade Dragon

Planning Focus Group Briefing: Crown Sydney, Barangaroo

10

Economic value creation from Crown's IRs in Australia



Economic value add: US\$3.0bn
• Crown's Australian IRs contributed US\$3.0 billion¹ of economic value add to the Australian economy

Employment impact: 31,000
• The direct and indirect employment impact from Crown's Australian IRs is approx. 31,000 people¹

Tax paid: US\$820m
• In FY13², Crown's Australian IRs contributed ~US\$820 million in combined taxes to State Governments in Australia

Tourism investment: US\$2.6 billion
• Crown is investing ~US\$2.6 billion³ in large scale tourism infrastructure at its Australian IRs over FY10-FY17

1. FY13-2013 based on 2012 Australian exchange rate of 1:0.94
2. FY13-2013 based on 2012 Australian exchange rate of 1:0.94
3. Based on 2012 Australian exchange rate of 1:0.94

Planning Focus Group Briefing: Crown Sydney, Barangaroo

8

Crown's Vision

To build and operate a six star hotel resort at Barangaroo which will be a world class tourist facility, helping Sydney compete with other global destinations and become a landmark attraction for millions of visitors.

Planning Focus Group Briefing: Crown Sydney, Barangaroo

11

Crown Awards & Accolades



WINNER OF THE INTERNATIONAL GAMING AWARDS 2014
BEST CASINO / INTEGRATED RESORT OF THE YEAR

INTERNATIONAL HOTEL AWARDS
Best Hotel in Australia 2013
Crown Towers Melbourne

Australia's Best Large Luxury Hotel 2013

WINNER GOURMET 2013 TRAVEL AWARDS

CROWN TOWERS VOTED AUSTRALIA'S BEST

For full list of Crown Resorts awards refer:
<http://www.crownresorts.com.au/about-us>
<http://www.crownresorts.com.au/about-us>

Planning Focus Group Briefing: Crown Sydney, Barangaroo

9

Process to Date

- **2012 - 2013** – Crown initiate and participate in NSW unsolicited proposal process
- **December 2012 – April 2013** – Crown undertake Design Competition Process
- **May 2013** – Crown appoint preferred Architect, Wilkinson Eyre Architects
- **May 2013 – October 2014** – Design development and preparation of draft SSDA documentation
- **October 2014** - Issue draft documentation to Barangaroo Development Authority for comment
- **March 2015** – SEPP Amendment and Modification 8 lodged with DP&E
- **March 2015** – Request for SEARs submitted to DP&E

Planning Focus Group Briefing: Crown Sydney, Barangaroo

12

International Design Competition

- Eight world class architects invited to compete in design competition.
- Four architects shortlisted.
- Design Competition Jury consisted of representatives from Crown, Lend Lease, BDA, a prominent architect representing DP&E and an observer from CoS.
- Jury unanimously recommended Wilkinson Eyre Architects design.

Planning Focus Group Briefing: Crown Sydney, Barangaroo

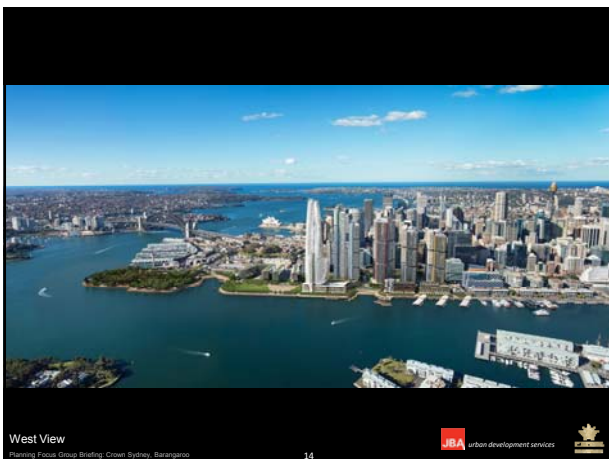
13



Model West View

Planning Focus Group Briefing: Crown Sydney, Barangaroo

16



West View

Planning Focus Group Briefing: Crown Sydney, Barangaroo

14



West Harbour View

Planning Focus Group Briefing: Crown Sydney, Barangaroo

17



The Building Design

"My ambition is to create a sculptural form that will rise up on the skyline like an inhabited artwork, clad in a veil of glass with differing levels of transparency, striking a clear new image against the sky."

Chris Wilkinson - Wilkinson Eyre Architects
16 May 2013

Planning Focus Group Briefing: Crown Sydney, Barangaroo

15

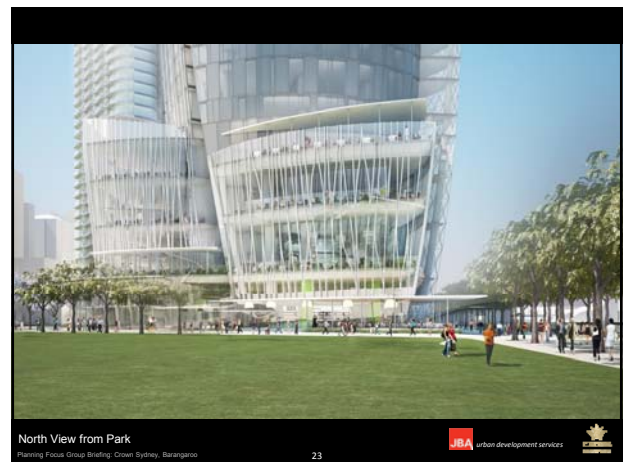
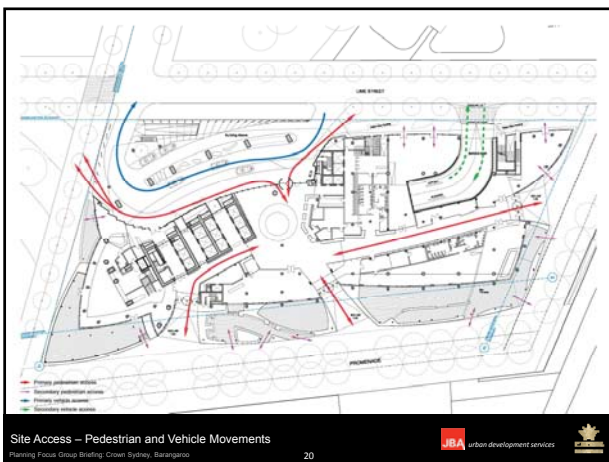
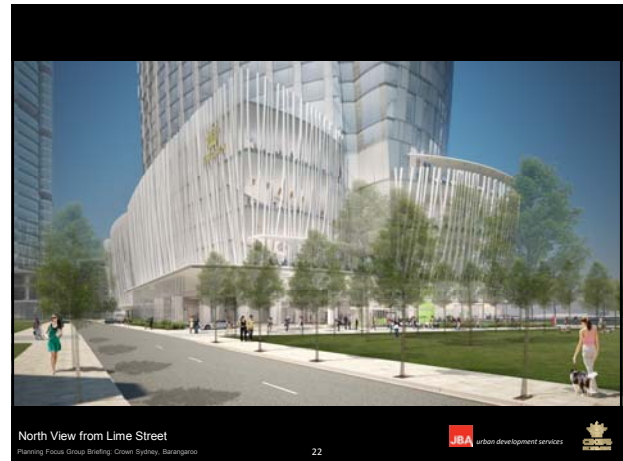


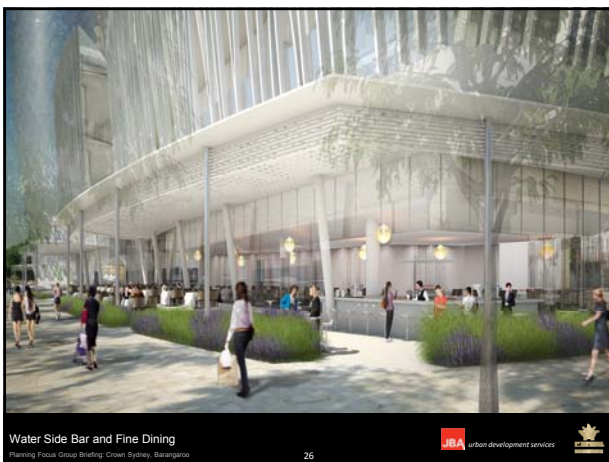
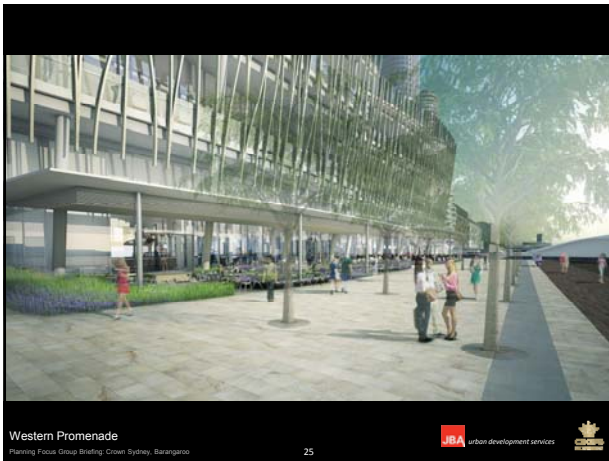
View Across from Barangaroo Central

Planning Focus Group Briefing: Crown Sydney, Barangaroo

18







Crown Sydney – Numerical Summary

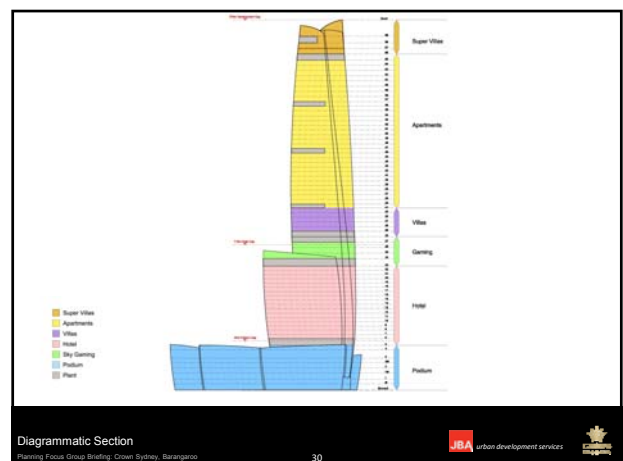
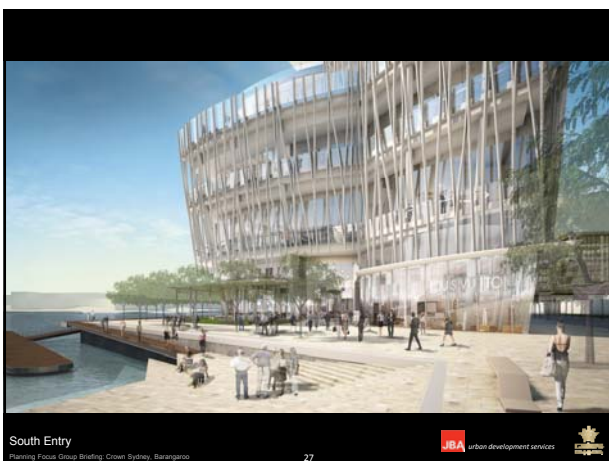
Component	Proposal
Site Area Summary	Application Site Boundary: 6,204m ² Ground Level Domain Works: 1,385m ² Extent of Basement Level Works: 5,062m ² Total Project Site Area: 12,651m²
GFA Summary	Tourism: 48,200m ² Retail: 6,700m ² Apartments: 22,600m ² Total GFA = 77,500m² (Max)
Guest Rooms & Suites	350 (approx.)
Residential Apartments	66 (approx.)
Maximum Height	RL 275m
Car Parking Summary	250 Hotel Valet Spaces 250 Self-Parking Spaces 110 Residential Spaces Total Parking Spaces: 610
Additional End of Trip Facilities	123 Bicycle Spaces 35 Motorcycle Spaces

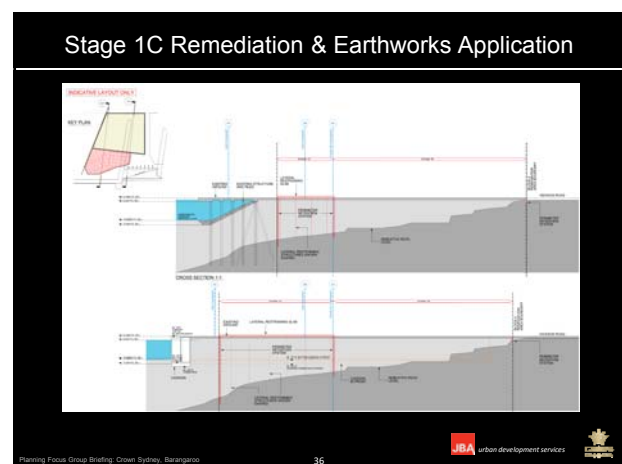
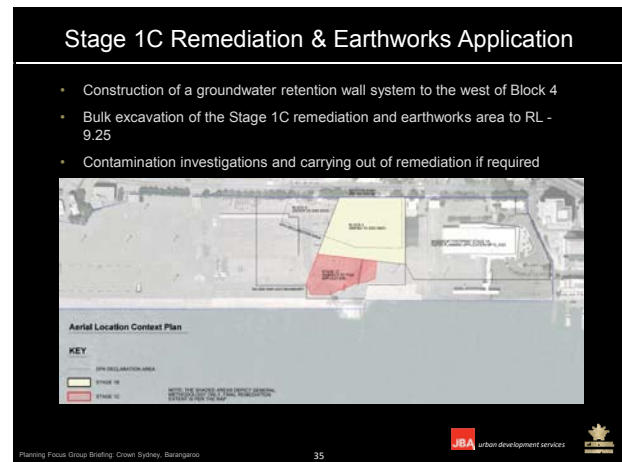
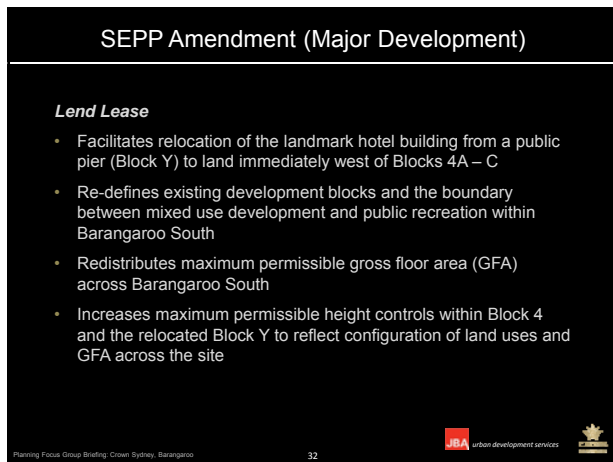
Planning Focus Group Briefing: Crown Sydney, Barangaroo

29

JBA urban development services

Crown Sydney





Crown Sydney Application

- Construction and use of a landmark building including:
 - Six star hotel resort
 - VIP gaming facilities
 - Residential apartments
 - retail/restaurant uses
 - Basement car park
 - Foreshore improvements
- Provision of services and utilities required to service the building

Planning Focus Group Briefing: Crown Sydney, Barangaroo

37



Environmental Impact Statements

- Comprehensive assessment of environmental impacts
- Responds to SEARs issued on 2 April 2015
- Accompanied by a suite of supporting technical studies and documents
- Includes summary of community and stakeholder consultation undertaken
- Project team comprised of industry leaders and experts:

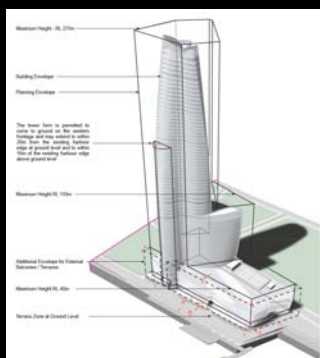


Planning Focus Group Briefing: Crown Sydney, Barangaroo

40



Crown Sydney – Built Form



Planning Focus Group Briefing: Crown Sydney, Barangaroo

38



Project Programme

- SEARs issued – April 2015
- Submit SSDA documentation for Test of Adequacy – Early May 2015
- Formally lodge SSDA – Late May 2015
- Planning Approval for Stage 1C – October 2015 (anticipated)
- Planning Approval for Concept Plan Modification 8 – November 2015 (anticipated)
- Planning Approval for CSHR – Concurrent with Modification 8 above (anticipated)

Planning Focus Group Briefing: Crown Sydney, Barangaroo

41



Crown Sydney – Built Form



Planning Focus Group Briefing: Crown Sydney, Barangaroo

39

