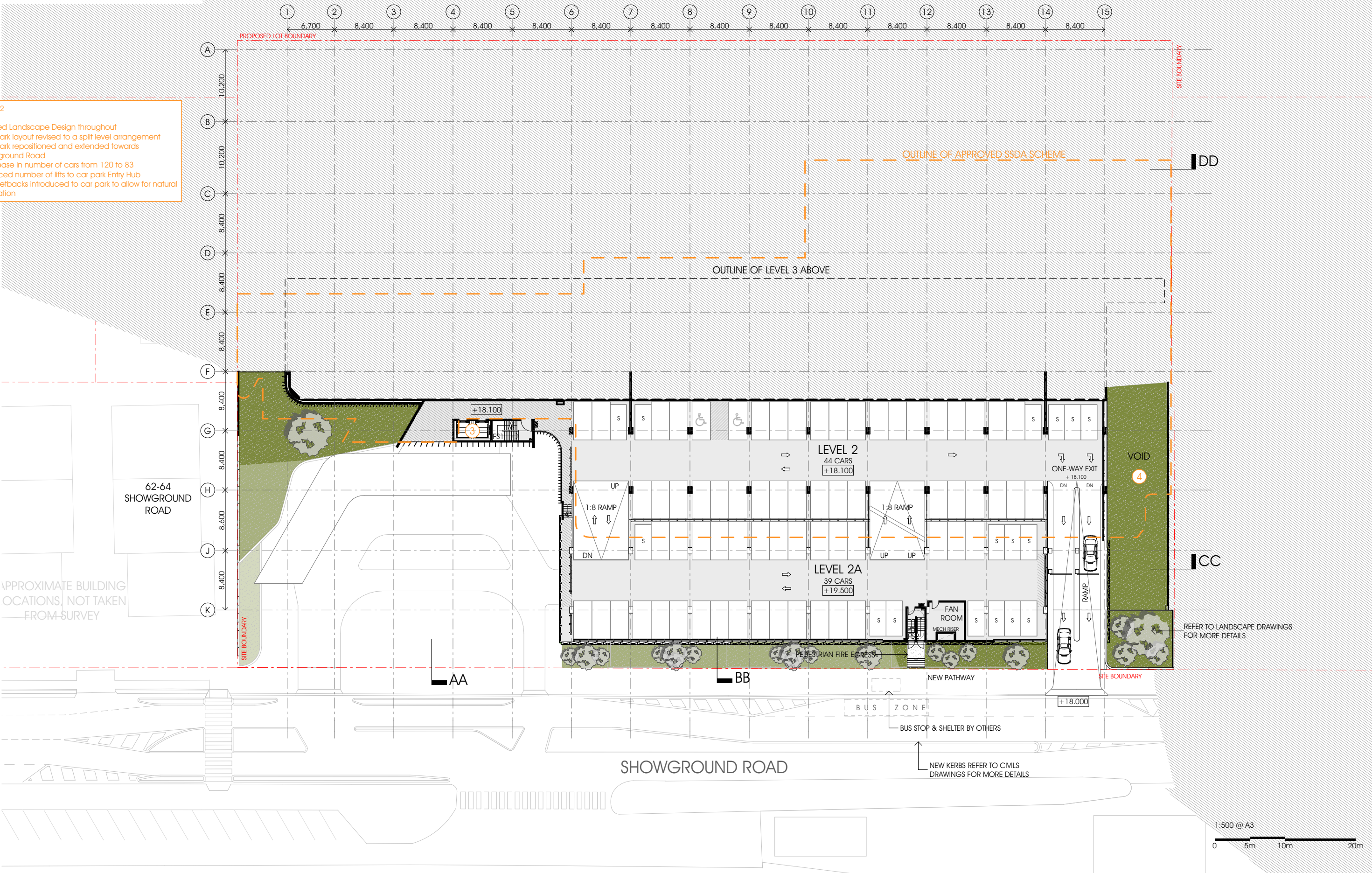


- LEVEL 2
- * Revised Landscape Design throughout
 - * Car park layout revised to a split level arrangement
 - * Car park repositioned and extended towards Showground Road
 - * Decrease in number of cars from 120 to 83
 - 3 Reduced number of lifts to car park Entry Hub
 - 4 Side setbacks introduced to car park to allow for natural ventilation



Gosford Hospital Redevelopment

Section 96 Submission

This drawing is issued upon the condition it is not copied, reproduced, retained or disclosed to any unauthorised person either wholly or in part without prior consent in writing of fitzpatrick+partners.
Do not scale drawings. Check dimensions before commencing work.

Drawings show design intent only. Shop drawings are to be provided for approval prior to construction or manufacture.
Inconsistencies are to be reported to fitzpatrick + partners.

CLIENT
NSW GOVERNMENT
Health Infrastructure

PROJECT NORTH
SCALE @ A3
1:500
PRINT DATE
11/08/2016

fitzpatrick+partners
© Copyright 2016
PJ + 61 2 8274 8200 WJ www.fitzpatrickpartners.com

DRAWING
LEVEL 2

PROJECT NO.
21516
DRAWING NO.
DA-07
ISSUE
A