



GENERATOR SUBJECT TO SEPARATE SSD - SSDA 8963

Colour Legend

	Existing
	Travel & Engineering

Planning, Industry & Environment

Issued under the Environmental Planning and Assessment Act 1979

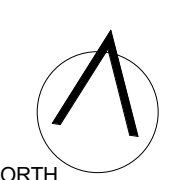
Approved Section: 4.55(1A) Application No: SSD-6848-Mod-6

Granted on the: 4 Sept 2019 Signed: *[Signature]*

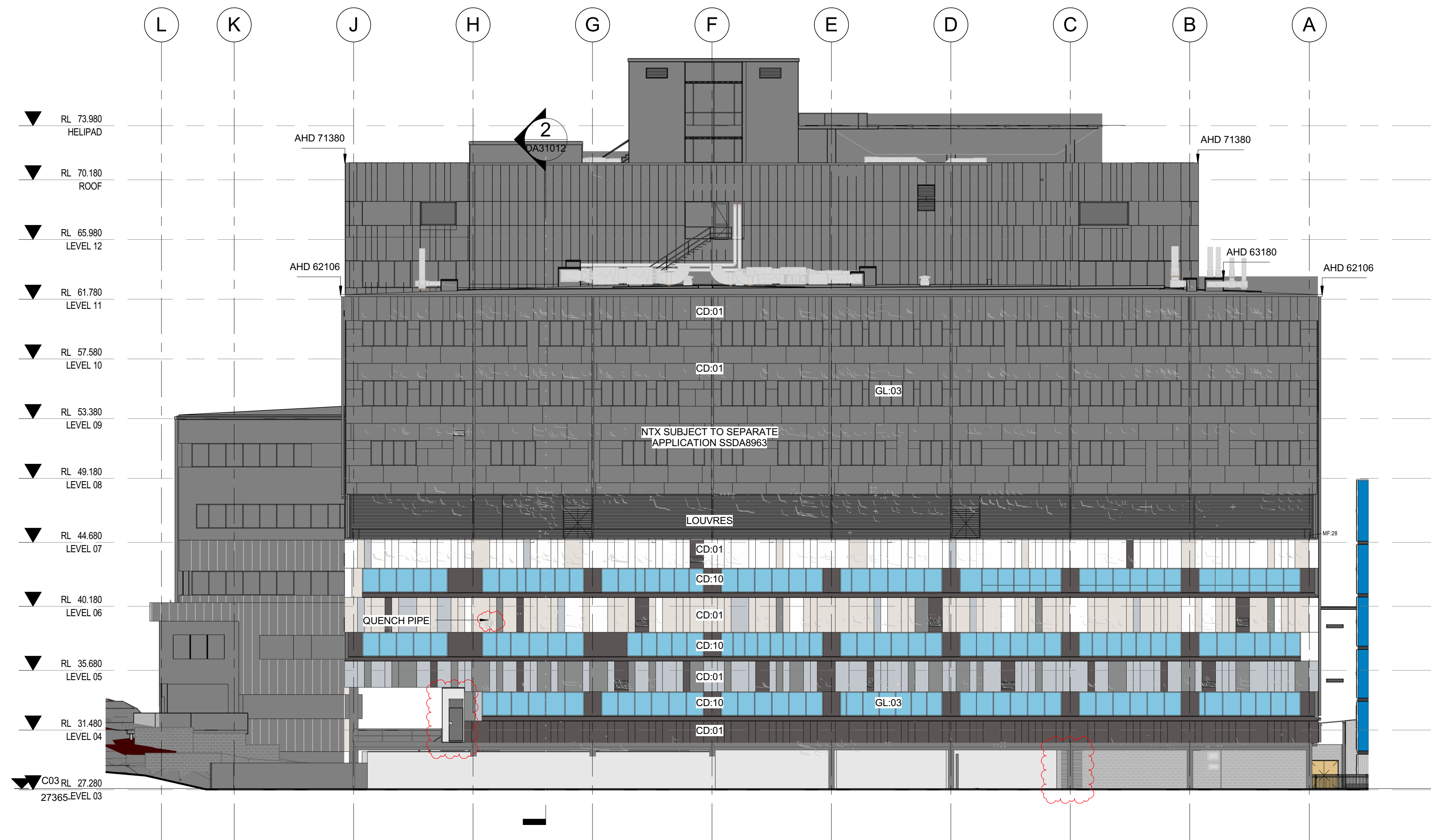
Sheet No: 1 of 5

Schedule of Changes - Level 7	
Item	Comments
1	East and West louvres aligned to external face of column
2	Louvre door moved to align with internal plant layout

ISSUE	REVISION DESCRIPTION	DATE	APD
A	Issue for DA	29/05/18	IM
B	4.55 Modification	11/06/18	IM
C	4.55 Modification	19/07/18	IM
D	4.55 Modification	04/07/19	IM
E	4.55 Modification	10/07/19	IM



DISCLAIMER: THIS DRAWING HAS BEEN DOCUMENTED IN COLOUR AND IS REQUIRED TO BE PRINTED IN COLOUR. FAILURE TO DO SO MAY RESULT IN LOSS OF INFORMATION



1 Building Elevation - North 3B2
A40001 1 : 200

NSW GOVERNMENT | **Planning, Industry & Environment**

Issued under the Environmental Planning and Assessment Act 1979

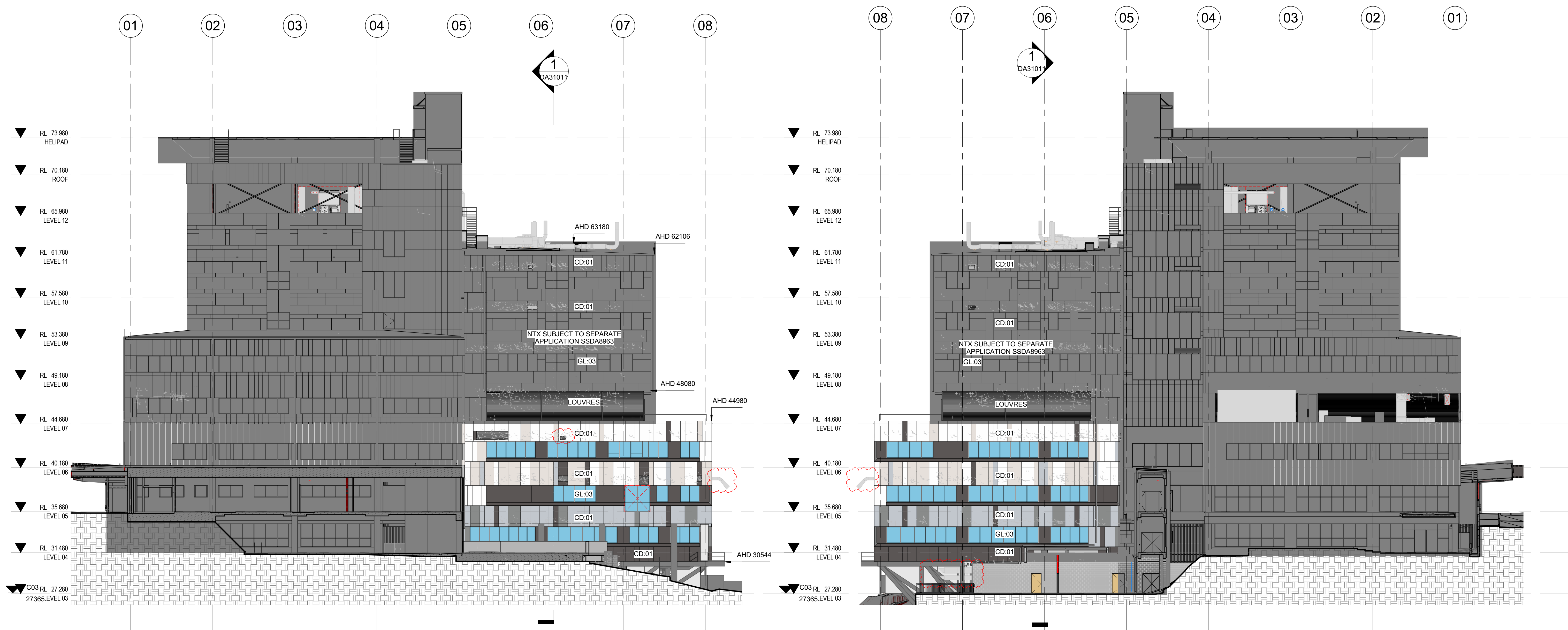
Approved Section: 4.55(1A) Application No: SSD-6848-Mod-6
 Granted on the: 4 Sept 2019 Signed: *[Signature]*

Sheet No: 2 of 5

Schedule of Changes - North Elevation 3B2	
Item	Comments
1	Quench pipe design adjusted, level 5 grid H
2	Security gate level 4 grid H
3	Block wall alignment adjusted west grid C
4	Mechanical duct shown grid B
5	Extent of louvres adjusted grid C

ISSUE	REVISION DESCRIPTION	DATE	APD
A	Issue for DA	29/05/18	IM
B	4.55 Modification	11/06/18	IM
C	4.55 Modification	19/07/18	IM
D	4.55 Modification	04/07/19	IM
E	4.55 Modification	10/07/19	IM

DISCLAIMER:
 THIS DRAWING HAS BEEN DOCUMENTED IN COLOUR AND IS REQUIRED TO BE PRINTED IN COLOUR. FAILURE TO DO SO MAY RESULT IN LOSS OF INFORMATION



1 Building Elevation - East 3B2
1 : 200

2 Building Elevation - West 3B2
1 : 200

NSW GOVERNMENT | **Planning, Industry & Environment**

Issued under the Environmental Planning and Assessment Act 1979

Approved Section: 4.55(1A) Application No: SSD-6848-Mod-6

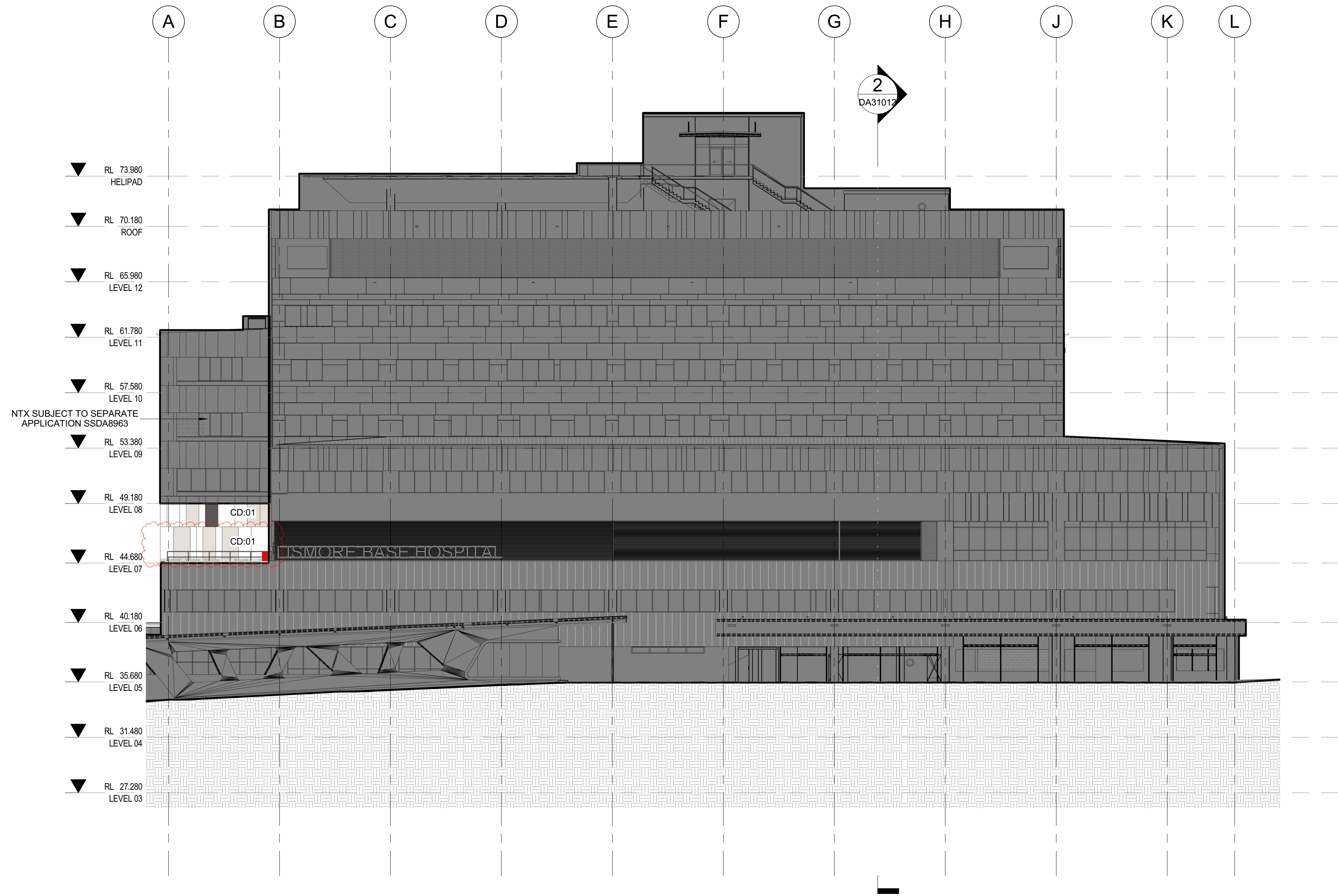
Granted on the: 4 Sept 2019 Signed: *[Signature]*

Sheet No: 3 of 5

Schedule of Changes - East & West Elevations 3B2	
Item	Comments
1	Mechanical plant shown
2	Mechanical louvre added level 6 grid 6
3	Quench pipe design changed level 5 grid 8

ISSUE	REVISION DESCRIPTION	DATE	APD
A	Issue for DA	29/05/18	IM
B	4.55 Modification	11/06/18	IM
C	4.55 Modification	19/07/18	IM
D	4.55 Modification	04/07/19	IM
E	4.55 Modification	10/07/19	IM

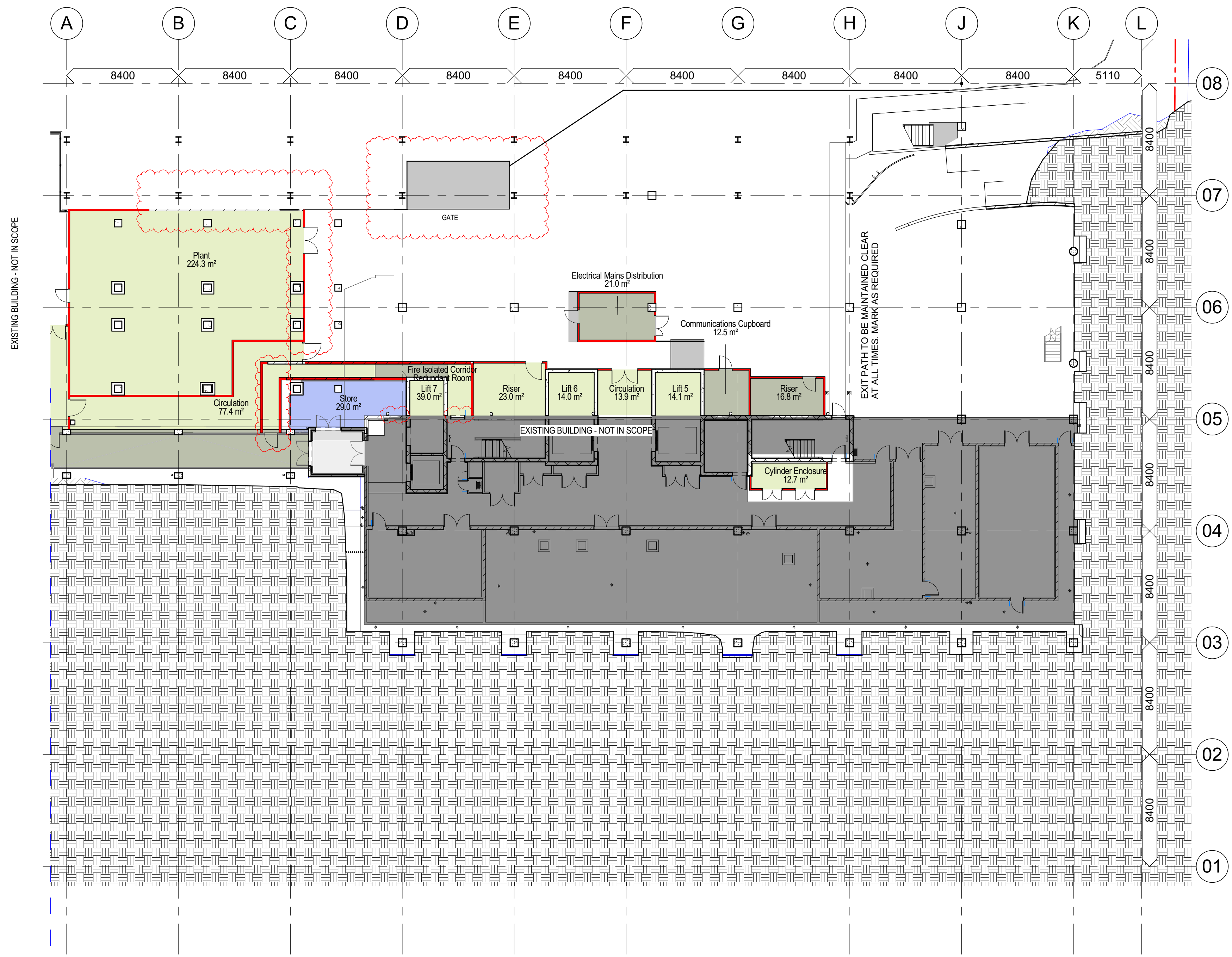
DISCLAIMER:
THIS DRAWING HAS BEEN DOCUMENTED IN COLOUR AND IS REQUIRED TO BE PRINTED IN COLOUR. FAILURE TO DO SO MAY RESULT IN LOSS OF INFORMATION



1 Building Elevation - South Frontage
1 : 200


Planning, Industry & Environment
 Issued under the Environmental Planning and Assessment Act 1979
 Approved Section: 4.55(1A) Application No: SSD-6848-Mod-6
 Granted on the: 4 Sept 2019 Signed: 
 Sheet No: 4 of 5

Schedule of Changes	
Item	Comments
1	Incorporation of quench pipe box on Northern Facade
2	Amendment of design language to facade
3	Change of colour palette to facade
4	Incorporation of large removable window for MRI
5	Incorporation of elevated walkway to Level 04
6	Reconfiguration of Level 03 to accommodate altered plant as a result of extension
7	Level 03 extent of louvre panelling reduced
8	Coordination of Mechanical design with external louvres
9	Windows amended suit internal layout



1 GA - Level 03 3B2
A30001 1:200

- Colour Legend
- Back of House
 - Travel & Engineering

NSW GOVERNMENT | **Planning, Industry & Environment**

Issued under the Environmental Planning and Assessment Act 1979

Approved Section: 4.55(1A) Application No: SSD-6848-Mod-6

Granted on the: 4 Sept 2019 Signed: *[Signature]*

Sheet No: 5 of 5

Schedule of Changes - Level 3	
Item	Comments
1	Grid C Block Wall Moved West
2	Extent of block and louvre modified Grid 7
3	Fire passage alignment shifted west on Grid C
4	Fire passage door removed at stair 1 as per PER
5	Chiller Compound removed Grid E7

ISSUE	REVISION DESCRIPTION	DATE	APD
A	Issue for DA	29/05/18	IM
B	4.55 Modification	11/06/18	IM
C	4.55 Modification	19/07/18	IM
D	4.55 Modification	04/07/19	IM
E	4.55 Modification	10/07/19	IM

DISCLAIMER: THIS DRAWING HAS BEEN DOCUMENTED IN COLOUR AND IS REQUIRED TO BE PRINTED IN COLOUR. FAILURE TO DO SO MAY RESULT IN LOSS OF INFORMATION

