

GENERAL NOTES

* FOR DEVELOPMENT APPLICATION ONLY _ NOT FOR CONSTRUCTION

* Do not scale from drawings

* All work to be carried out in accordance to the Technical Specification

* All discrepancies or conflict should be brought to the attention of the Project Landscape Architect

* Larger scale drawings and written dimensions take preference

* All dimensions in mm unless otherwise stated.

* All tree dimensions and RLs in metres.

* Use figured dimensions only.

* Verify all dimensions on site before the commencement of any works.

* Contractors shall locate and protect all services prior to construction.

* All work shall be carried out in accordance with ASA, BCA and Local Government Regulations.

* Structural Details shall be subject to Engineer's Specifications.

* Drainage & Water Feature Details shall be subject to Hydraulic Engineer's Specifications.

* All work shall be carried out in a professional manner by Qualified Tradesman according to Landscape Drawings and Engineer's Specifications.

*Protect all adjoining property building, walls and paving. Damaged elements are to be replaced.

* No responsibility will be taken by 360 degrees. for any variations in design, construction method, materials specified, and general specifications without permission from the Project Engineer or Landscape Architect.

*Service location on plans are indicative only . 360 accepts no responsibility for the accuracy of service location. it is the responsibility of the contractor to determine service locations prior to the commencement of work. Any damages remains the responisblty of the contractor.

* This Drawing is copyright to 360 degrees.

PLANTING NOTES

* Adjust final location of planting locally to suit service infrastructure including service lines, pillars, valves and the like.

* Adjust final variation of plant material as directed to suit final extent of each planting area.

* All trees in general landscape grass seeded batter and turf areas are, unless otherwise noted to be provided with a mulch ring with spade finish edge.

* Project Landscape Architect to inspect and approve all Plant material prior to delivery to site.

* Project Landscape Architect to inspect and approve all Plant material setout prior to install.

LANDSCAPE FINISHES NOTES

* There are to be no sharp protusions or abrasive edges, obstrusive fittings and fixtures

* Adjust extent of each type of soilworks and edging locally as required to accomodate final constructed locations of walls/signage and pavements

* All Garden Bed Levels must be A minimum of 150mm Below Facade Flashing and Waterproof Membrane to Slab. Refer Typical Details

* All Paving and Deck Levels must be setout and co-ordinated with Civil Stormwater Pits and Trench Drains prior to Construction
Refer Civil Engineers Documentation

* Contractor to allow for access to Pits under Timber Deck

* Adjust final location of soilworks and edging locally to suit service infrastructure including services, lines, pillars, valves and the like

* Each area of turf extends to entire area boundary by adjacent walls, pavements, edges, and kerbs as shown

* For all lighting locations to landscape areas refer to Electrical Engineers drawings. Final Location to be confirmed with Projects Landscape Architect

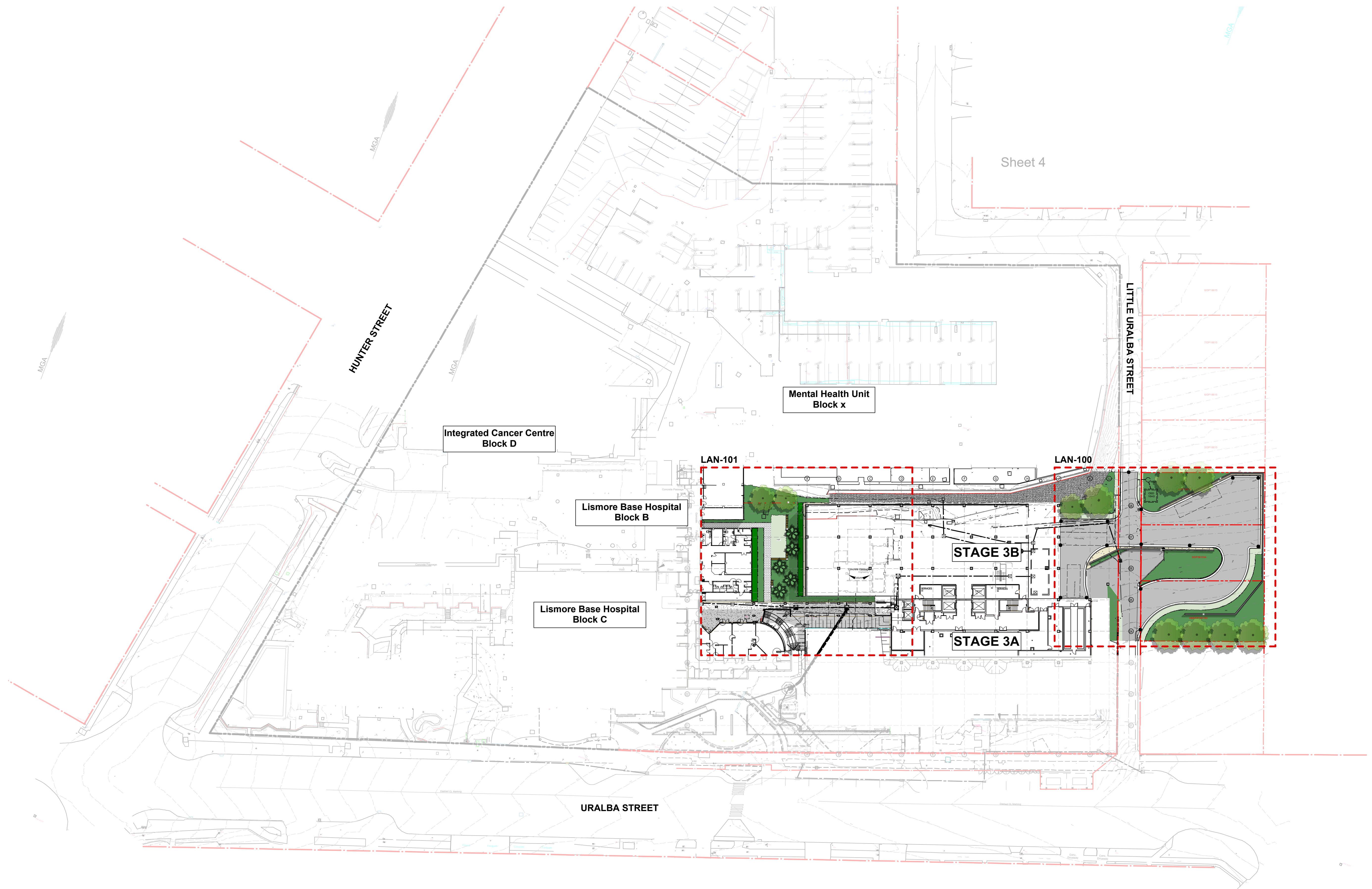
* Finished surface levels and contours are indicative only. Refer to Civil Engineers drawings for final levels

* For all structural details of walls, pavements, and the like refer to Civil Engineers documentation and specification

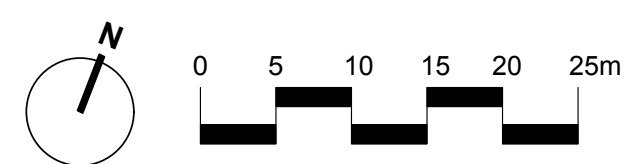
* Sub soil drainage indicative only. Refer to Engineers documentation for overland flow requirements, extent and details of all sub soil drainage

* Refer to Irrigation Consultant documentation for details and requirements of landscape irrigation system

DRAWING LEGEND		
	Title Boundary	N/A
SYMBOL	ITEM	MATERIAL & FINISH
	Vehicle Pavement	Refer to Civil Documentation
	Pavement Type 1	Light Grey Concrete with lightly exposed aggregate
	Pavement Type 2	Granite Unit Pavers
	Seating Type 1	Hardwood Timber Bench Seating
	Wall Type 1	Core Filled Blockwork Retaining Wall
	Gravel Type 1	10-20mm Crushed Granite
	Turf	Turf
	Garden Bed	Proposed Groundstorey planting consisting of shrubs, grasses and groundcovers Refer to Planting Schedule for Species & Sizes
	Proposed Trees	Refer to Planting Schedule for Species & Sizes
	Edge Type 1	Steel Edging Finish: Mild Steel
	Fence Type 1	1.8m high Steel Fencing
	Existing Conrous	N/A
	Propoesed Reduced Level	N/A
	Top of Wall Level	N/A
	Top of Fence Level	N/A
	Top of Seat Level	N/A
	Grading	N/A



REV	Amendment	Date	By
A	Issued for DA	14.11.14	DW



IMPORTANT NOTES:

Do not scale from drawings

All discrepancies to be brought to the attention of the Landscape Architect

Larger scale drawings and written dimensions take preference over dimensions in mm unless otherwise stated.

Use Imperial dimensions in feet and inches.

Use Imperial dimensions only.

Verify all dimensions on site before the commencement of any works.

Contractors shall locate and protect all services prior to construction.

All work shall be carried out in accordance with ASIA, BCA and Local Government Regulations.

Structural details shall be subject to Engineer's Specifications.

Drainage & Water Features Details shall be subject to Hydraulic Engineer's Specifications.

All work shall be carried out in a professional manner by Qualified Tradesmen according to Landscape Drawings.

Liability for any loss or damage shall be limited to the sum of \$50,000.

Our responsibility shall be taken by \$300,000 per year for any variations in design, construction method, materials and general specifications without permission from the Project Engineer or Landscape Architect.

Drawings are copyright.

CLIENT
NSW
Health
Infrastructure

SCALE
1:500 @ A1

SHEET
3 of 6

	DRAWN DW
--	-------------

<p> <input type="checkbox"/> </p>	<p> CHECKED LB </p>
-----------------------------------	-------------------------

ISSUED FOR
DA

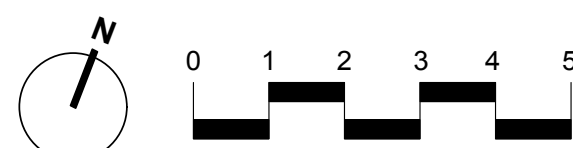
DWG. TITLE
SITE LOCATION PLAN

PROJECT
LISMORE BASE HOSPITAL - STAGE 3B

[illegible]

- 4x Large trees to loading bay entrance to consist of species such as *Angophora costata* or *Cupaniopsis anacardioides*

REV	Amendment	Date	By
A	Issued for DA	14.11.14	DW



IMPORTANT NOTES:

- Do not scale from drawings
- All discrepancies to be brought to the attention of the Landscape Architect
- Larger scale drawings and written dimensions take preference over dimensions in any other drawings otherwise stated
- All tree dimensions and RUL in metric
- Use Imperial dimensions only
- Verify all dimensions on site before the commencement of any works
- Contractors shall locate and protect all services prior to construction
- All work shall be carried out in accordance with ASIA, DCA and Local Government Regulations.
- Structural Details shall be subject to Engineer's Specifications
- Drainage & Water Feature Details shall be subject to Hydraulic Engineer's Specifications
- Work to be carried out in a professional manner by Qualified Tradesmen according to Landscape Drawings & Specifications
- No responsibility will be taken by 360 degrees for any variations in design, construction method, materials or workmanship that may occur from the Project Engineer to Landscape Architect.
- This Drawing is copyright © 360 degrees

SCALE
1:100 @ A1

	DRAWN DW
--	-------------

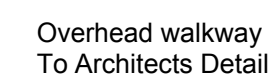
ISSUED FOR
DA


PROJECT
LISMORE BASE HOSPITAL - STAGE 3B

360 

Audio 5.1 2 Hill Street
Curry Hills NSW 2010
+612 9332 3601
www.360.net.au
RN: 90 146 901 322

1000



360
Studio 5.1 2 Hill Street
Surry Hills NSW 2010
p +612 9332 3600
w www.360.net.au
ARN: 62 445 004 000

A large, mature tree with dense green foliage and some reddish-brown flowers or fruits, standing in front of a house with a grey roof. The tree is the central focus, with its branches spreading out. The house behind it has a grey shingled roof and light-colored siding. The sky is bright and overcast.

A tall palm tree with a thick trunk and large, fan-shaped fronds, set against a clear blue sky.

A tall coconut palm tree with a large, feathery frond, standing in a lush, green tropical setting. The tree is the central focus, with its trunk extending from the bottom to the top of the frame. The frond is large and green, with some brown, dried fronds hanging down. The background is filled with dense tropical foliage and other trees. The ground is covered in green grass and some small plants. The overall scene is bright and sunny, with strong shadows cast on the ground.



A close-up photograph of a lush green fern frond, showing the detailed, feathery structure of the leaves. The frond is vibrant green and appears to be a fiddlehead, with the leaves tightly packed and curved. The background is a soft, out-of-focus green, suggesting a natural, forest-like setting.



LAN-900