


LEGEND

- Building Extents (Stage 1)
- Building Extents (Stage 2)
- Planted Areas
- Hardscape Areas
- Existing Trees
- Existing Trees Removed

NOT FOR CONSTRUCTION

REVISION B	DATE 08/12/14	REVISION NOTE REVISED DA LANDSCAPE PLANS	BY AG
NOTES DRAFT			
PROJECT Lismore Hospital Carpark			
ADDRESS Uralba and Dalziell Street			
CLIENT Health Infrastructure			
DRAWING Context Plan			
PREPARED FOR:  Health Infrastructure HEALTH INFRASTRUCTURE Level 6/77 Pacific Highway North Sydney NSW 1585 PO BOX 1060 North Sydney NSW		PREPARED BY: SPACKMAN MOSSOP and MICHAELS SPACKMAN MOSSOP MICHAELS 3 OXFORD ST. RABBITON NSW PO BOX 880 SABLEHURST NSW 1300	
PROJECT # 14065	DATE 08/12/14	SCALE @ A1 1:750	SCALE @ xx
PLOT DATE --	DWG #	REVISION	
DRAWN AG	CHKD MS	L01	

Lismore Hospital Carpark

Health Infrastructure



LEGEND

Building Line

Planted Areas (refer planting palette)

- PM1 Groundcovers
- PM2 Shaded Grasses
- PM3 Shrubs and Medium Trees
- PM4 Climbers and Creepers
- PM5 Slope Stabilising
- PM6 Exposed Grasses

Footpath Areas (refer hardscape palette)

- SM1 Concrete
- SM2 Asphaltic Concrete

Feature Trees (refer planting palette)

- Syzygium luehmannii Small-leafer Lilly Pilly
- Eucalyptus robusta Swamp Mahogany
- Ficus obliqua Small leaved fig tree
- Eucalyptus tereticornis Forest Red Gum
- Flindersia australis Australian Teak
- Lophostemon confertus Brush Box

Existing Trees

- Existing Trees Retained
- Existing Trees Removed

NOTE:

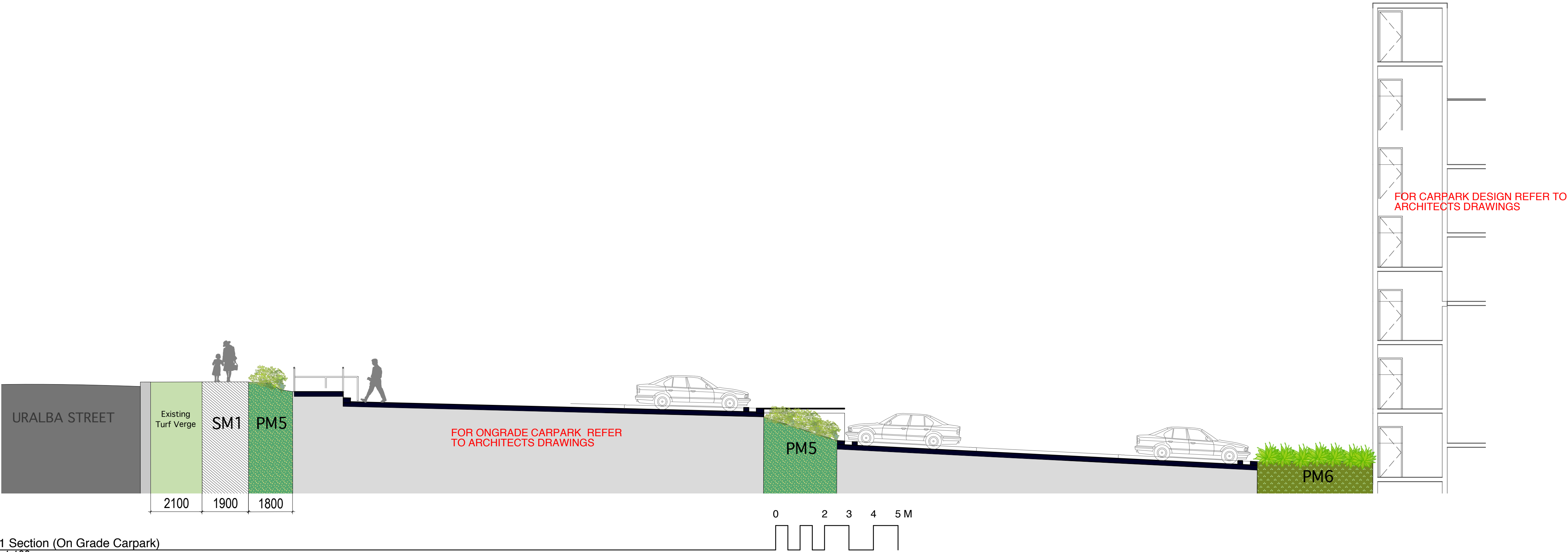
- Existing Trees (to be removed) should be assessed for there viability for transplantation and reuse on site.
- Any works relating to drainage should seek the appropriate civil design input and certification.
- For carpark design refer to architects drawings
- For drainage and levels refer to civil drawings

NOT FOR CONSTRUCTION

REVISION B	DATE 08/12/14	REVISION NOTE REVISED DA LANDSCAPE PLANS	BY AG
NOTES DRAFT			
PROJECT Lismore Hospital Carpark			
ADDRESS Uralba and Dalziell Street			
CLIENT Health Infrastructure			
DRAWING Landscape Plan (Stage 1)			
PREPARED FOR: NSW GOVERNMENT Health Infrastructure HEALTH INFRASTRUCTURE Level 6/77 Pacific Highway North Sydney NSW 1585 PO BOX 1060 North Sydney NSW		PREPARED BY: SPACKMAN MOSSOP and MICHAELS SPACKMAN, MOSSOP & MICHAELS 3 ONCORO ST. RABBITON NSW PO BOX 680 SHELLENGHURST NSW 1300	
PROJECT # 14065	SCALE @ A1 1:200		
DATE 08/12/14	SCALE @ xx		
PLOT DATE -	DWG #	REVISION	
DRAWN AG	CHKD MS	L02	

1

Stage 1 Section (On Grade Carpark)
Section: 1:100



LEGEND

- Building Line
- Planted Areas (refer planting palette)
- PM1

Groundcovers
- PM2

Shaded Grasses
- PM3

Shrubs and Medium Trees
- PM4

Climbers and Creepers
- PM5

Slope Stabilising
- PM6

Exposed Grasses

NOT FOR CONSTRUCTION

REVISION B	DATE 08/12/14	REVISION NOTE REVISED DA LANDSCAPE PLANS	BY AG
NOTES DRAFT			
PROJECT Lismore Hospital Carpark			
ADDRESS Uralba and Dalziell Street			
CLIENT Health Infrastructure			
DRAWING Landscape Section (Stage 1)			
PREPARED FOR: <div><div>NSW</div><div>GOVERNMENT</div><div>Health Infrastructure</div><div>HEALTH INFRASTRUCTURE Level 6/7/7 Pacific Highway North Sydney NSW 1585 PO BOX 1060 North Sydney NSW</div></div>		PREPARED BY: <div><div>SPACKMAN MOSSOP and MICHAELS</div><div>SPACKMAN MOSSOP MICHAELS 3 OXFORD ST. PADMINGTON NSW PO BOX 880 DARLINGHURST NSW 1500</div></div>	
PROJECT #	14065	SCALE @ A1	1:100
DATE	08/12/14	SCALE @ xx	-
PLOT DATE	-	DWG #	REVISION
DRAWN AG	CHKD MS	L03	

Lismore Hospital Carpark

Health Infrastructure



LEGEND

- Building Line
- Planted Areas (refer planting palette)
- PM1 Groundcovers
 - PM2 Shaded Grasses
 - PM3 Shrubs and Medium Trees
 - PM4 Climbers and Creepers
 - PM5 Slope Stabilising
 - PM6 Exposed Grasses

- Footpath Areas (refer hardscape palette)
- SM1 Concrete
 - SM2 Asphaltic Concrete


- Feature Trees (refer planting palette)
- Syzygium luehmannii*
Small-leafer Lilly Pilly
 - Eucalyptus robusta*
Swamp Mahogany
 - Ficus obliqua*
Small leaved fig tree
 - Eucalyptus tereticornis*
Forest Red Gum
 - Flindersia australis*
Australian Teak
 - Lophostemon confertus*
Brush Box

- Existing Trees
- Existing Trees Retained
 - Existing Trees Removed

NOTE:

- Existing Trees (to be removed) should be assessed for there viability for transplantation and reuse on site.
- Any works relating to drainage should seek the appropriate civil design input and certification.
- For carpark design refer to architects drawings
- For drainage and levels refer to civil drawings

NOT FOR CONSTRUCTION

REVISION B	DATE 08/12/14	REVISION NOTE REVISED DA LANDSCAPE PLANS	AG
NOTES DRAFT			
PROJECT Lismore Hospital Carpark			
ADDRESS Uralba and Dalziel Street			
CLIENT Health Infrastructure			
DRAWING Landscape Plan (Stage 2)			
PREPARED FOR:  Health Infrastructure HEALTH INFRASTRUCTURE Level 6/77 Pacific Highway North Sydney NSW 1585 PO BOX 1060 North Sydney NSW		PREPARED BY: SPACKMAN MOSSOP and MICHAELS SPACKMAN MOSSOP MICHAELS 3 ONYOND ST. RABBITON NSW PO BOX 680 SABLEHURST NSW 1300	
PROJECT # 14065	SCALE @ A1 1:200		
DATE 08/12/14	SCALE @ xx		
PLOT DATE -	DWG #	REVISION	
DRAWN AG	CHKD MS	L04	