


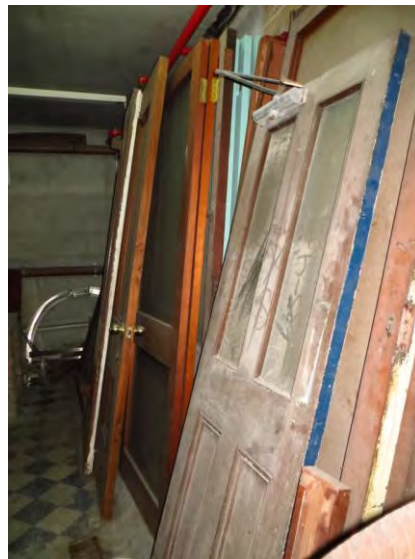
## STOREROOM G31

### Ground Floor



27

<b>Location</b> Lands Building	<b>Room No</b> G31 Ground Floor	<b>Item No</b> 27
<b>Title</b> Building fabric		
<b>Description</b> Quantity of building fabric including windows, doors, skirting and other items removed from Lands Department Building.		
<b>Date</b> Circa 1880	<b>Condition</b> Removed building fabric	<b>Dimensions</b> (W x D x H) N/A
<b>Photograph</b> 		



**Significance**

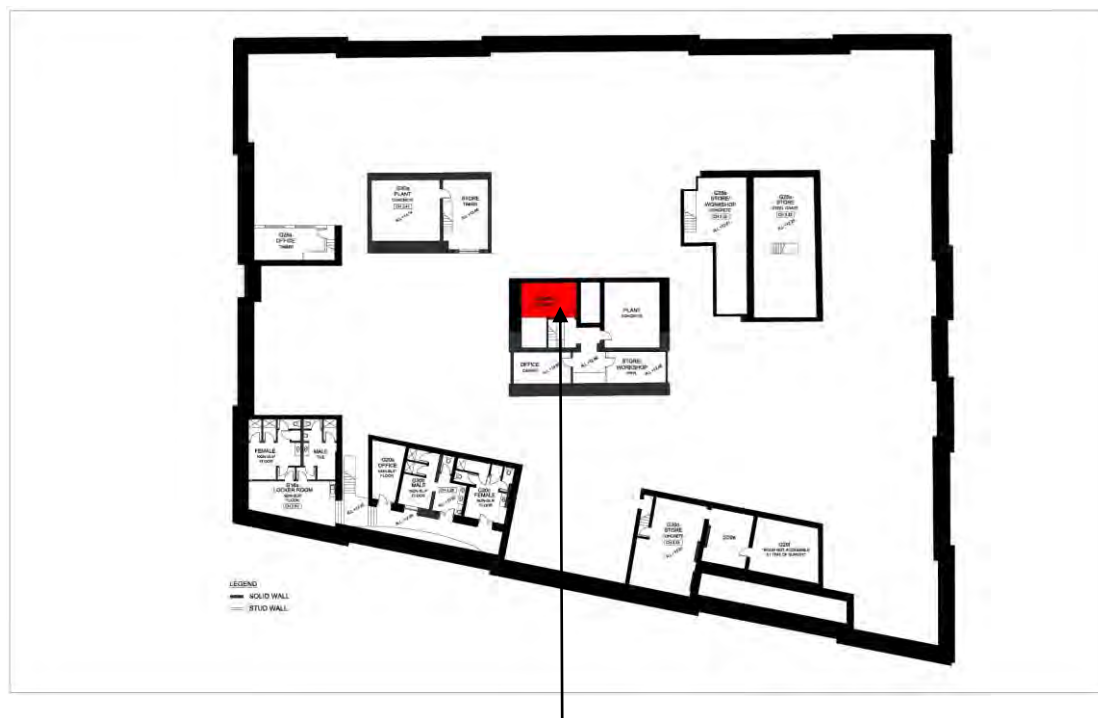
Exceptional – original building fabric

**Recommendation**

Retain on site as material for reference, templates for new fabric and/or for future restoration or repair.

## STOREROOM (above G38)

### Ground Floor Mezzanine




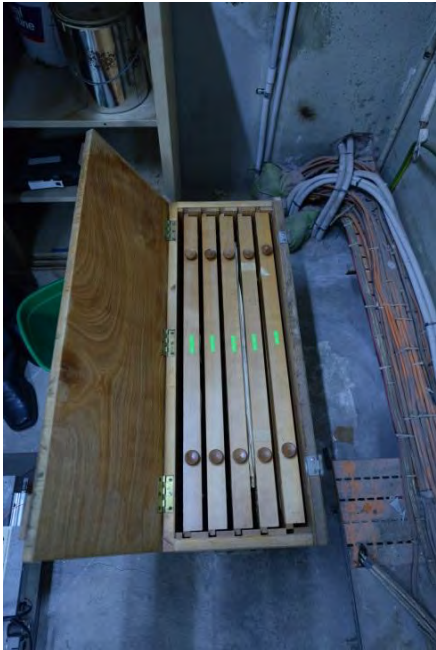
28

29

30

<b>Location</b> Lands Building	<b>Room No Above G38</b> Mezzanine, Ground Floor	<b>Item No</b> 28
<b>Title</b> Day bed		
<b>Description</b> Australian cedar day bed, frame and turned top rails with carved spindle timber supports, stuff over black vinyl upholstered seat, supported on turned legs.		
<b>Date</b> 1880-90	<b>Condition</b> Poor	<b>Dimensions (W x D x H)</b> 178 x 64.5 x 65.5cm
<b>Photograph</b> 		
<b>Significance</b> High – item of original furnishing, ensuite with other items of furniture – 13,14 and 15		
<b>Recommendation</b> The day bed should be restored and re-united with other matching items (Items 13, 14 and 15) and if possible re-allocated within the Lands Building.		




<b>Location</b> Lands Building	<b>Room No</b> Above G38 Mezzanine, Ground Floor	<b>Item No</b> 29
<b>Title</b> Travelling case		
<b>Description</b> Travelling land ballot case, with 5 timber ballot trays and circular numbered ballot balls. Each tray of balls is covered with a plywood sheet, secured with metal clasps to keep the balls in place. Paper label stuck onto top inscribed to 'Under Secretary Lands, Lands Department.'		
<b>Date</b> Mid 20 <sup>th</sup> century	<b>Condition</b> Good	<b>Dimensions (W x D x H)</b> 80 x 29 x 49cm
<b>Photograph</b> <div style="display: flex; justify-content: space-around; align-items: center;">   </div>		

**Significance**

High – evidence of land ballot process as work activity of Lands Department, high interpretive value

**Recommendation**

Retain in Lands Building for interpretive purposes.

<b>Location</b> Lands Building	<b>Room No</b> Above G51 Mezzanine, Ground Floor	<b>Item No</b> 30
<b>Title</b> Press		
<b>Description</b> Stained oak frame from a printing press, painted guidelines to base plate.		
<b>Date</b> Late 19 <sup>th</sup> century	<b>Condition</b> Incomplete, poor, split on corner of base	<b>Dimensions (W x D x H)</b> 83.5 x 32 x 65cm
<b>Photograph</b> 		
<b>Significance</b> Moderate – item associated with work processes of Lands Department, but incomplete.		
<b>Recommendation</b> The significance of this item is compromised by its incompleteness and lack of provenance. If this cannot be established through adequate consultation with a recognised authority on early printing equipment, the item is not recommended for retention.		



**Other information**


The Powerhouse Museum has a printing press (English, manufactured by Hughes and Kimble) , with lithographic plates which were donated by the NSW Lands Department in 1952. The Lands Department is believed to have acquired that press about 1840 and it may have been one of two used in Governor Brisbane's observatory in Parramatta in 1828.

## STOREROOM (above G51)

### Ground Floor Mezzanine



31 to 34

<b>Location</b> Lands Building	<b>Room No</b> Above G51 Mezzanine, Ground Floor	<b>Item No</b> 31
<b>Title</b> Wooden trays		
<b>Description</b> Quantity of rectangular wooden trays and numbered balls, unused		
<b>Date</b> 20 <sup>th</sup> century	<b>Condition</b> Good	<b>Dimensions (W x D x H)</b> Not recorded
<b>Other information</b> 		
Ballot box and trays in use, Minister for Lands Office SLNSW Govt Printer		

**Photograph**



**Significance**



High – evidence of activity conducted by Lands Department, high interpretive value.

**Recommendation**

Retain examples in Lands Building for interpretive purposes, offer examples to Powerhouse Museum.

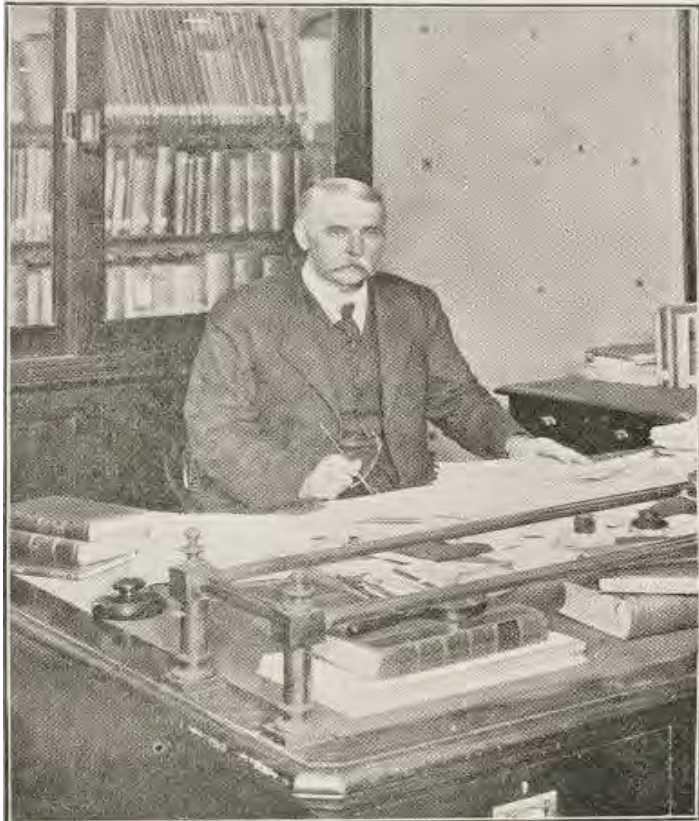
<b>Location</b> Lands Building	<b>Room No</b> Above G51 Mezzanine, Ground Floor	<b>Item No</b> 32
<b>Title</b> Map holder		
<b>Description</b> Cedar map holder, with calico-backed maps on rollers, inscribed in centre front with details of contents, New South Wales.		
<b>Date</b> Early 20 <sup>th</sup> century	<b>Condition</b> Fair, maps require repair	<b>Dimensions (W x D x H)</b> 114 x 24 x 15cm
<b>Photograph</b> 		
<b>Significance</b> High— evidence of work activity in Lands Department, high interpretive value.		
<b>Recommendation</b> Retain in Lands Department, repair and use for interpretive purposes.		



<b>Location</b> Lands Building	<b>Room No</b> Above G51 Mezzanine, Ground Floor	<b>Item No</b> 33
<b>Title</b> Books		
<b>Description</b> Quantity of leather bound books including Statutes and Cases Determined by the Metropolitan Land Court		
<b>Date</b> Various	<b>Condition</b> Fair to poor	<b>Dimensions (W x D x H)</b> N/A
<b>Photograph</b> <div style="display: flex; justify-content: space-around; align-items: center;">   </div>		
<b>Significance</b> Moderate – these books appear to be volumes which exist in other collections in the public domain		
<b>Recommendation</b> If further assessment determines that these are duplicate material held in a public collection (eg State Library of NSW, Parliamentary Library), are stored as they are no longer required for reference, and have no value for interpretation, then they do not need to be retained.		

<b>Location</b> Lands Building	<b>Room No</b> Above G51 Mezzanine, Ground Floor	<b>Item No</b> 34
<b>Title</b> Cupboard		
<b>Description</b> Two door cupboard, possibly a press		
<b>Date</b> Late 19 <sup>th</sup> century	<b>Condition</b> Poor	<b>Dimensions (W x D x H)</b> N/A
<b>Photograph</b> 		
<b>Significance</b> Moderate		
<b>Recommendation</b> This item may be considered for future disposal if no alternate use can be found in the Lands Building		



<b>Location</b> Lands Building	<b>Room No</b> 101 First Floor	<b>Item No</b> 35
<b>Title</b> Desk		
<b>Description</b> Australian red cedar double pedestal partner's desk, each pedestal with 4 drawers to one side each with twin brass mounted recessed handles, single cupboard to the other, on shaped plinth base with rounded corners, brown composition leather insert to desk top, sides of desk have mouldings to panels.		
<b>Date</b> Late 19 <sup>th</sup> century	<b>Condition</b> Good	<b>Dimensions</b> (W x D x H) 158 x 59.5 x 72cm
<b>Other information</b>  		
Desk of the Under Secretary for Lands, circa 1905		


**Photograph****Significance**

Exceptional –original furnishing for Under Secretary of Lands office, important to office hierarchy furnishing.

**Recommendation**


Further research required to establish whether the top is original. The photograph circa 1905 appears to show the desk with a curved cut-out similar to the desk in Room 201. Retain in situ.



<b>Location</b> Lands Building	<b>Room No 101</b> First Floor	<b>Item No</b> 36
<b>Location</b> Lands Department		<b>Room No</b> 101
<b>Title</b> Table		
<b>Description</b> Australian cedar board room table, solid top with moulded edge above apron, supported on 4 turned legs (glass top not original). The original finish of this table has been stripped off.		
<b>Date</b> Late 19 <sup>th</sup> century	<b>Condition</b> Good, but not original finish	<b>Dimensions (W x D x H)</b> 213 x 113 x 74cm
<b>Photograph</b> 		
<b>Significance</b> Moderate		
<b>Recommendation</b> Because this table no longer has its original finish, it would be preferable to replace it with one of the tables currently in storage which is in original condition. Unless a definite provenance can be established for this, it could be recommended for disposal. (Refer Items 8 or 25)		


<b>Location</b> Lands Building	<b>Room No</b> 101 First Floor	<b>Item No</b> 37
<b>Title</b> Chairs (5)		
<b>Description</b> Australian red cedar chairs, serpentine front seat rail, out-swept scroll carved arms, carved cedar back inset with buttoned squab, upholstered in brown leather, stuff over seat buttoned along seat rail, turned front legs on brass and porcelain casters, slightly out-swept back legs.		
<b>Date</b> Circa 1880	<b>Condition</b> Good	<b>Dimensions (W x D x H)</b> 58 x 51 x 99cm
<b>Photograph</b> 		
<b>Significance</b> Exceptional – original to furnishing of Lands Department building, possibly from first floor boardroom [Room 104].		
<b>Recommendation</b> Retain in situ.		

<b>Location</b> Lands Building	<b>Room No</b> 101 First Floor	<b>Item No</b> 38
<b>Title</b> Chairs (2)		
<b>Description</b> Cedar arm chairs ,upholstered in black leather with studded detail along seat rail and arm rests, upholstered waisted back, upholstered arms terminating in down-swept reeded arm supports, stuff over seat tapering square front legs, slightly splay back legs,		
<b>Date</b> Circa 1920-30s	<b>Condition</b> Excellent	<b>Dimensions (W x D x H)</b> Not recorded
<b>Photograph</b> 		
<b>Significance</b> Moderate		
<b>Recommendation</b> These chairs are not original to the original fit-out but consistent with a subsequent upgrade to an executive office. Can be retained in situ if required to provide sufficient seating around meeting table.		


<b>Location</b> Lands Building	<b>Room No</b> 101 First Floor	<b>Item No</b> 39
<b>Title</b> Desk		
<b>Description</b> Australian red cedar kneehole desk, 2 drawers with rectangular wood handles, solid timber top, supported on turned legs.		
<b>Date</b> Late 19 <sup>th</sup> century	<b>Condition</b> Good, minor damage to edges	<b>Dimensions (W x D x H)</b> 137 x 59.5 x 72cm
<b>Photograph</b> 		
<b>Significance</b> High – original furniture for Lands Department building, important to office hierarchy		
<b>Recommendation</b> Retain in situ.		

<b>Location</b> Lands Building	<b>Room No</b> 101 First Floor	<b>Item No</b> 40
<b>Title</b> Hat stand		
<b>Description</b> Australian red cedar coat and hat stand, rectangular form, broken pediment above, central mirror with shelf below supported on shaped brackets, side supports each with 4 brass and porcelain hat and coat hooks, projecting shelf supported on central carved upright and rectangular base with canted corners, lead lined drip tray.		
<b>Date</b> Late 19 <sup>th</sup> century	<b>Condition</b> Excellent	<b>Dimensions</b> (W x D x H) 61 x 34 x 196cm
<b>Photograph</b> 		
<b>Significance</b> High – original to furnishing of Lands Department building and consistent with other examples in the Building.		
<b>Recommendation</b> This item is more likely to have been located in the adjoining office, but is part of the suite appropriate to the office furnishing hierarchy for the position.		



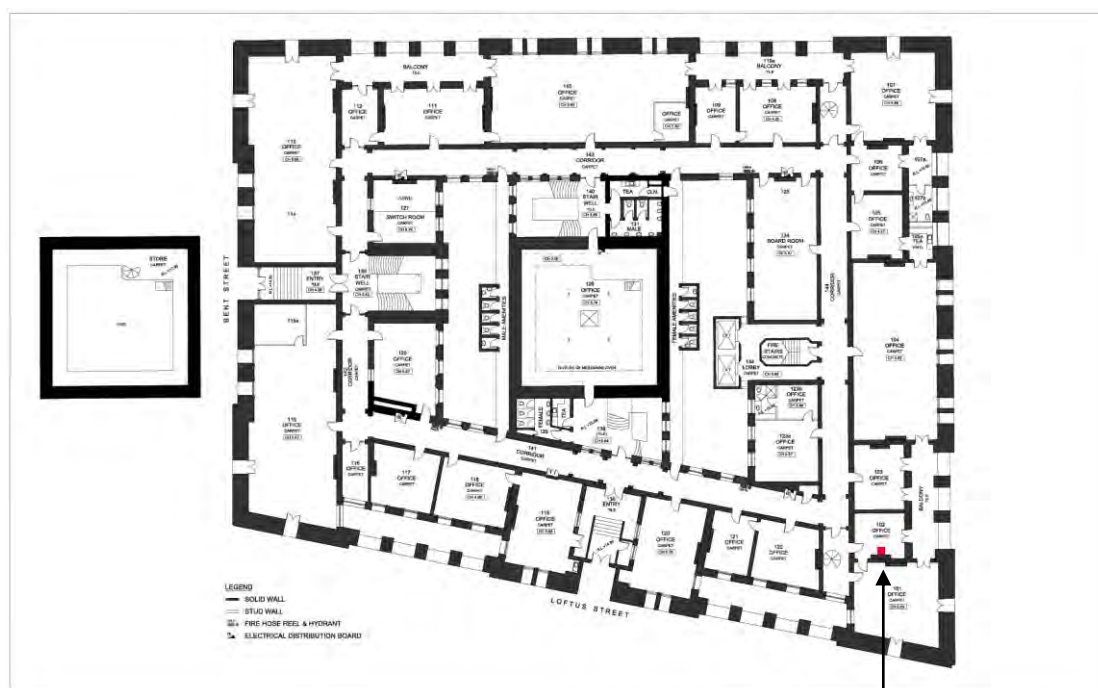
<b>Location</b> Lands Building	<b>Room No</b> 101 First Floor	<b>Item No</b> 41
<b>Title</b> Bookcase		
<b>Description</b> Australian red cedar breakfront bookcase, top section with projecting front, 4 glazed doors enclosing 3 adjustable shelves, above 4 door cupboard below, on plinth base.		
<b>Date</b> Circa 1880	<b>Condition</b> Excellent	<b>Dimensions (W x D x H)</b> 250 x 59 x 274cm
<b>Photograph</b> 		
<b>Significance</b> High – original to furnishing of Lands Department building		
<b>Recommendation</b> Retain in situ.		


<b>Location</b> Lands Building	<b>Room No</b> 101 First Floor	<b>Item No</b> 42
<b>Title</b> Table		
<b>Description</b> Circular coffee table, solid timber top with foliate carved decoration to apron, supported on 4 cabriole legs.		
<b>Date</b> 20 <sup>th</sup> century	<b>Condition</b> Good	<b>Dimensions (W x D x H)</b> 45cm height, 88cm diameter
<b>Photograph</b> 		
<b>Significance</b> Moderate		
<b>Recommendation</b> Retain if required but not original to 1880s Lands Building furnishing.		

<b>Location</b> Lands Building	<b>Room No</b> 101 First Floor	<b>Item No</b> 43
<b>Title</b> Chairs (3)		
<b>Description</b> Fully upholstered wing arm chairs, loose cushion seat, buttoned back, cabriole front legs.		
<b>Date</b> Modern	<b>Condition</b> Excellent	<b>Dimensions (W x D x H)</b> 84 x 68 x 107cm
<b>Photograph</b> 		
<b>Significance</b> Neutral		
<b>Recommendation</b> <p>The three leather upholstered chairs are modern reproductions and could be replaced with Items 13, 14 and 15 to retain their integrity and association with the Lands Building. Similarly, the modern 2-door glazed timber cupboard in this room was not recorded as having any significance but consideration could be given to replacing it with Item and not recorded).</p>		

## OFFICE [102]

### First Floor

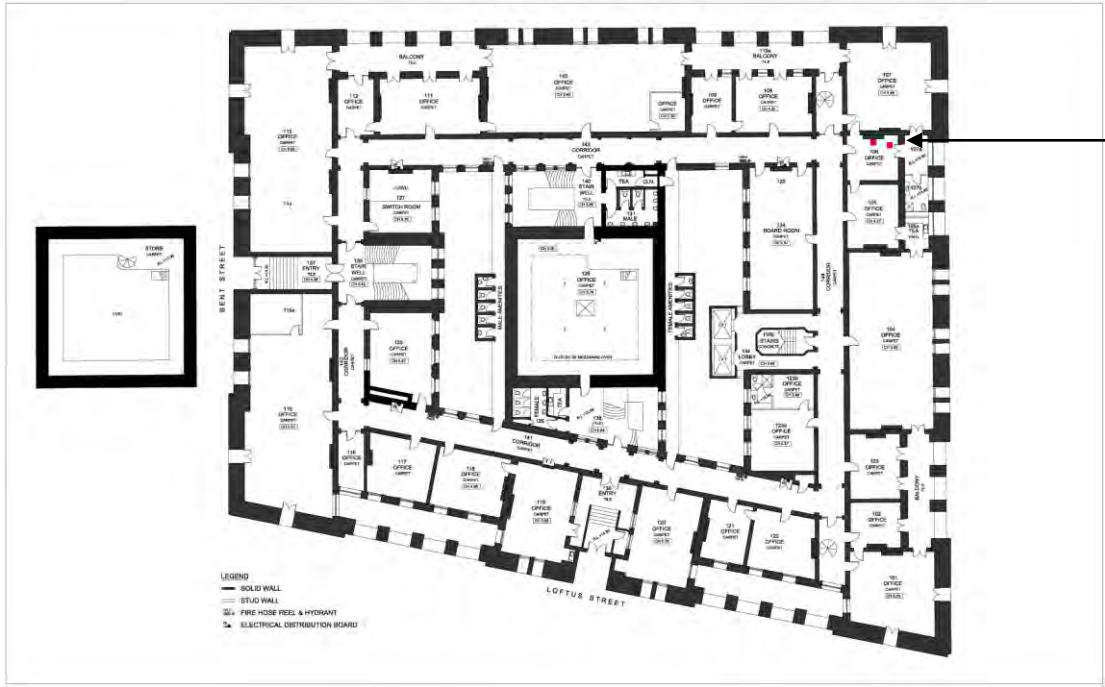


<b>Location</b> Lands Building	<b>Room No</b> 102 First Floor	<b>Item No</b> 44
<b>Title</b> Clock		
<b>Description</b> Black marble clock, rectangular carcase, surmounted by triangular pediment flanked by carved scrolls, set with contrasting panels of contrasting green marble, incised foliate decoration, circular enamel and gilt clockface with Roman numerals and glass cover, stepped base with stepped surmounts above, of French manufacture.		
<b>Date</b> Circa 1880	<b>Condition</b> Good, damage to enamel face, chips to glass cover	<b>Dimensions</b> (W x D x H) 42 x 17.5 x 48.5cm
<b>Photograph</b> 		
<b>Significance</b> Exceptional.		
<b>Recommendation</b> This clock may have been relocated to Room 102 following the removal of the fireplace in Room 101.		




OFFICE [106]

First Floor



45

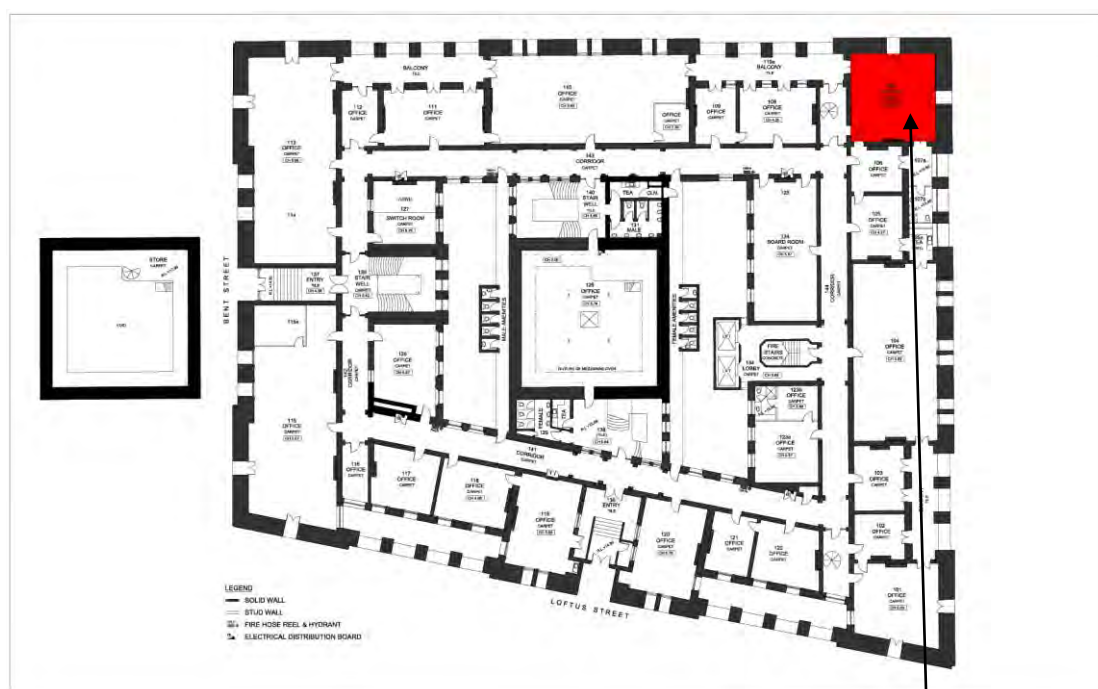
46

<b>Location</b> Lands Building	<b>Room No</b> 106 First Floor	<b>Item No</b> 45
<b>Title</b> Plan		
<b>Description</b> Framed plan of the Redfern Estate showing land offered for sale by Richardson and Wrench, January 7 1884, printed by Gibbs Shallard & Co, Sydney.		
<b>Date</b> 1884 (image), modern frame	<b>Condition</b> Excellent	<b>Dimensions (W x D x H)</b> 78.5 x 107cm
<b>Photograph</b> 		
<b>Significance</b> High – original print.		
<b>Recommendation</b> Retain for interpretive use.		


<b>Location</b> Lands Building	<b>Room No</b> 106 First Floor	<b>Item No</b> 46
<b>Title</b> Chair		
<b>Description</b> Cedar Trafalgar chair, scroll shaped arms, curved top rail, stuff over seat upholstered in brown leather, buttoned along seat rail, turned front legs. (Matching Trafalgar chairs in Room 107)		
<b>Date</b> Circa 1880	<b>Condition</b> Fair	<b>Dimensions (W x D x H)</b> 47 x 52 x 89cm
<b>Photograph</b> 		
<b>Significance</b> High – original furnishing for Lands Department building.		
<b>Recommendation</b> Reunite with Item 60 in Minister for Lands office (Room 107), repair and retain in situ.		

## FORMER MINISTER FOR LANDS OFFICE [107]

### First Floor



47 to 68

<b>Location</b> Lands Building	<b>Room No 107</b> First Floor	<b>Item No</b> 47
<b>Title</b> Bookcase		
<b>Description</b> Fixed cedar bookcase, with carved decorative frieze below projecting pediment, 5 glazed doors to upper section above panelled doors with drop handles, plinth base. Tongue and grooved back to carcase, adjustable cedar shelving. Both sides of bookcase fitted with rectangular mirrors.  Bookcase contains bound leather volumes of NSW Parliamentary Debates and Statutes.		
<b>Date</b> 1880	<b>Condition</b> Excellent, modified to conceal air conditioning ducting	<b>Dimensions (W x D x H)</b> 327 x 67 x 337cm
<b>Other information</b>   <p>Sheep ballot in Minister for Land's Office, Lands Department, Sydney. The bookcase can be seen in the background. SLNSW GP Series 2 - 04154</p>		



**Photograph**



**Significance**

Exceptional – constructed for fit out of Minister's for Lands office, integral to room.

**Recommendation**

Retain in situ with bound leather volumes.

<b>Location</b> Lands Building	<b>Room No</b> 107 First Floor	<b>Item No</b> 48
<b>Title</b> Table		
<b>Description</b> Low rectangular cedar table, brown leather insert to top, moulded edge with canted corners, supported on four turned legs on brass and porcelain casters. Paper trade label, "Manufactured by Alex W Norton Cabinetmaker, 52-54 Hunter Street"		
<b>Date</b> Circa 1880	<b>Condition</b> Good, some wear to leather top	<b>Dimensions (W x D x H)</b> 76 x 45 x 45cm

## Other information



Small table is visible to the right of the desk

**Photograph**



**Significance**

Exceptional – original to Minister for Lands office, work of Alexander Norton, colonial cabinetmaker.

**Recommendation**

Retain in situ.

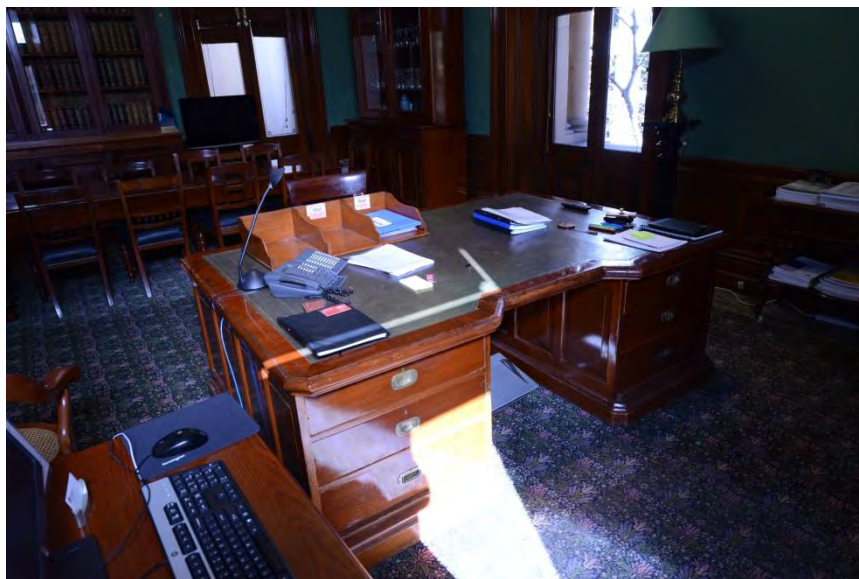


<b>Location</b> Lands Building	<b>Room No</b> 107 First Floor	<b>Item No</b> 49
<b>Title</b> Chair		
<b>Description</b> Office chair, swivel seat with cane insert, lyre shaped central back splat, 4 out-swept legs on brass and porcelain casters. Impressed mark VR, crown, December 1878		
<b>Date</b> 1878	<b>Condition</b> Excellent	<b>Dimensions (W x D x H)</b> 49cm diameter, 83cm height
<b>Photograph</b> 		
<b>Significance</b> Exceptional – consistent with item of furniture, possibly associated with earlier Survey building on the site.		
<b>Recommendation</b> This desk chair is consistent with others supplied to government offices circa 1880 and further research may confirm that it was used with one of the desks with the cut-out curve. Retain in situ		

<b>Location</b> Lands Building	<b>Room No</b> 107 First Floor	<b>Item No</b> 50
<b>Title</b> Desk		
<b>Description</b> Double pedestal cedar partner's desk, each pedestal with 3 drawers to one side each with brass mounted recessed handles, single cupboard to the other on plinth base with canted corners, gilt tooled green leather insert to desk top which has shaped chair recess. Trade label "Manufactured by Alex W Norton cabinetmaker 52-54 Hunter Street". Modified with electrical cabling.		
<b>Date</b> Circa 1880	<b>Condition</b> Excellent	<b>Dimensions (W x D x H)</b> 218 x 151 x 75cm
<b>Other information</b> <div data-bbox="317 835 1265 1482" data-label="Image"> </div> <p>Land ballot drawn for ex-servicemen, showing desk in Minister's Office in the Lands Department SLNSW GPO Series 2 - 0187</p>		



**Photograph**




**Significance**

Exceptional – item of original furnishing of Minister for Lands office, work of colonial cabinetmaker Alexander Norton.

**Recommendation**

Retain in situ.

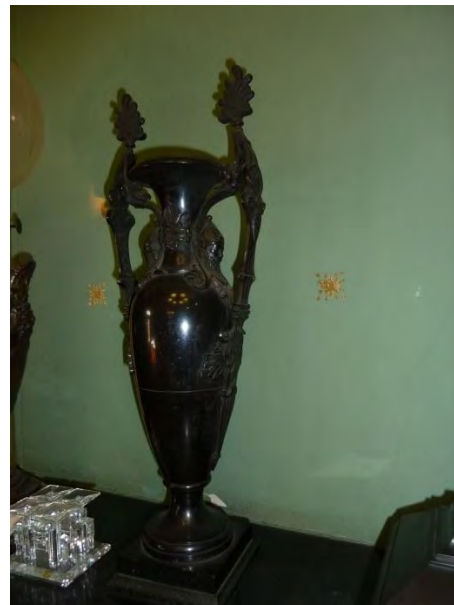
<b>Location</b> Lands Building	<b>Room No</b> 107 First Floor	<b>Item No</b> 51
<b>Title</b> Fender		
<b>Description</b> Cast iron fireplace fender with brass gallery rail		
<b>Date</b> 1880	<b>Condition</b> Excellent	<b>Dimensions (W x D x H)</b> 138 x 36 x 15cm
<b>Photograph</b> 		
<b>Significance</b> Exceptional – original to the furnishing of the Minister for Lands office.		
<b>Recommendation</b> Retain in situ.		

<b>Location</b> Lands Building	<b>Room No</b> 107 First Floor	<b>Item No</b> 52
<b>Title</b> Garniture		
<b>Description</b> Black marble French Empire mantel clock the clock case enclosing a gilded enamel clockface with Roman numerals		
<b>Date</b> Circa 1880	<b>Condition</b> Excellent	<b>Dimensions</b> (W x D x H) Clock 58 x 17 x 53cm, vases 54cm height
<b>Other information</b>  <p>Land ballot held in the Minister for Lands office, SLNSW Government Printing Office 2-05004. Clock and vases are visible on mantelpiece to the right.</p>		

**Photograph**



**Photograph**



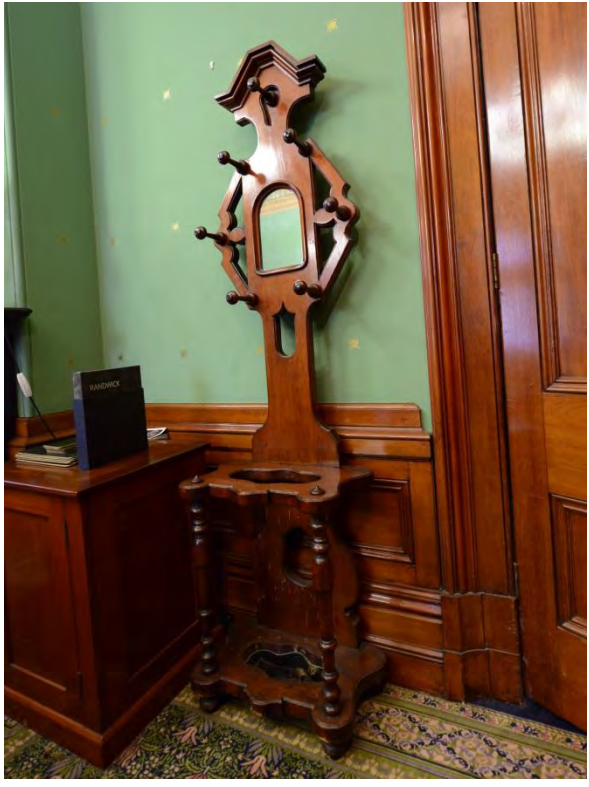
**Significance**

Exceptional – original to the furnishing of the Minister for Lands office.


**Recommendation**

Retain in situ.




<b>Location</b> Lands Building	<b>Room No</b> 107 First Floor	<b>Item No</b> 53
<b>Title</b> Hat and coat stand		
<b>Description</b> Cedar coat and hat stand, waisted form, shaped pediment above a hat peg, arched mirror surrounded by a decorative cut-out with 6 coat pegs, shelf supported on t 2 front turned uprights, with shaped cut out for umbrella handles, shaped base with lead lined drip tray.		
<b>Date</b> Circa 1880	<b>Condition</b> Excellent	<b>Dimensions (W x D x H)</b> 56 x 35 x 210.5cm
<b>Photograph</b> 		
<b>Significance</b> Exceptional – part of original furnishing of Minister for Lands office, important to hierarchy of room furnishing.		
<b>Recommendation</b> Retain in situ.		




<b>Location</b> Lands Building	<b>Room No</b> 107 First Floor	<b>Item No</b> 54
<b>Title</b> Table		
<b>Description</b> Cedar side table, solid timber top with green leather insert, with moulded edge above the apron, supported on four turned legs. Trade label "Manufactured by Alex W Norton Cabinetmaker, 52-54 Hunter Street".		
<b>Date</b> Circa 1880	<b>Condition</b> Excellent	<b>Dimensions (W x D x H)</b> 183 x 45 x 75cm
<b>Photograph</b> 		
<b>Significance</b> Exceptional – item of original furnishing, work of colonial cabinetmaker, Alexander Norton.		
<b>Recommendation</b> Retain in situ.		

<b>Location</b> Lands Building	<b>Room No</b> 107 First Floor	<b>Item No</b> 55
<b>Title</b> Chaise longue		
<b>Description</b> Cedar chaise longue, serpentine shaped front rail and scroll carved backboard, upholstered in red leather, stuff over sear buttoned along seat rail, buttoned back and sloped side, supported on turned legs on brass and porcelain casters.		
<b>Date</b> Circa 1880	<b>Condition</b> Excellent	<b>Dimensions (W x D x H)</b> 195 x 63 x 92cm
<b>Photograph</b> 		
<b>Significance</b> Exceptional – item of original furniture for Minister for Lands office, high quality work of a colonial cabinetmaker (unidentified), part of the hierarchy of office furnishing.		
<b>Recommendation</b> Retain in situ, compatible with Item 11.		

<b>Location</b> Lands Building	<b>Room No</b> 107 First Floor	<b>Item No</b> 56
<b>Title</b> Bookcase		
<b>Description</b> Cedar bookcase, moulded projecting pediment, two glazed doors, enclosing 2 shelves above 3 panelled doors on a plinth base, single full length drawer with metal handles in Art Nouveau style.		
<b>Date</b> Late 19 <sup>th</sup> century	<b>Condition</b> Excellent, handles incomplete	<b>Dimensions (W x D x H)</b> 161 x 60 x 236cm
<b>Photograph</b> 		
<b>Significance</b> Exceptional - original to in Lands Building, but a later acquisition.		
<b>Recommendation</b> Retain in situ.		

<b>Location</b> Lands Building	<b>Room No</b> 107 First Floor	<b>Item No</b> 57
<b>Title</b> Table		
<b>Description</b> Cedar board room table, solid top, moulded edge above apron, single drawer at each end with turned wooden handle, supported on four turned wooden legs resting on timber blocks (to raise height).		
<b>Date</b> Circa 1880	<b>Condition</b> Excellent	<b>Dimensions</b> (W x D x H) 274 x 88.5 x 75cm
<b>Photograph</b> 		
<b>Significance</b> High – original furnishing for Lands Department building.		
<b>Recommendation</b> Retain in situ.		



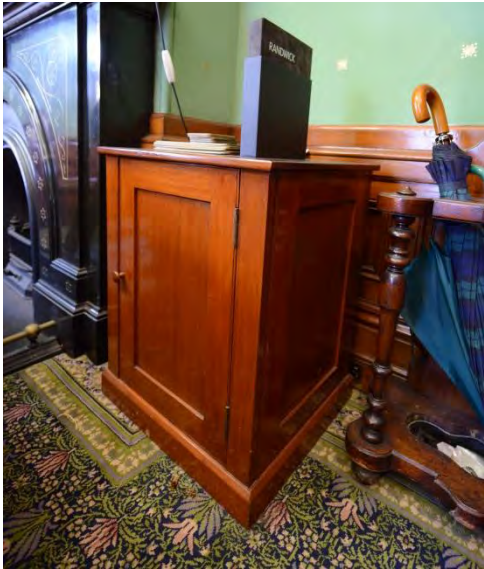

<b>Location</b> Lands Building	<b>Room No</b> 107 First Floor	<b>Item No</b> 58
<b>Title</b> Chairs (4)		
<b>Description</b> Cedar chairs, H-shaped frame to back, shaped top rail between reeded stiles, upholstered in blue leather, stuff over seat with buttoning above seat rails, ring turned legs.		
<b>Date</b> Late 19 <sup>th</sup> century	<b>Condition</b> Excellent	<b>Dimensions (W x D x H)</b> 46 x 46 x 91cm
<b>Photograph</b> 		
<b>Significance</b> High – original furnishing for Lands Department building.		
<b>Recommendation</b> Retain in situ.		




<b>Location</b> Lands Building	<b>Room No</b> 107 First Floor	<b>Item No</b> 59
<b>Title</b> Chairs (5)		
<b>Description</b> Cedar chairs, two back rails enclosing spindles, carved top rail with a central rosette, between reeded stiles, upholstered in blue leather, stuff over seat with buttoning above seat rails, ring turned legs..		
<b>Date</b> Late 19 <sup>th</sup> century	<b>Condition</b> Excellent	<b>Dimensions (W x D x H)</b> 48 x 43 x 88cm
<b>Photograph</b> 		
<b>Significance</b> High – original for furnishing of Lands Department building. Items 58 and 59 are likely to be an amalgam from larger suites of meeting room chairs.		
<b>Recommendation</b> Retain in situ.		

<b>Location</b> Lands Building	<b>Room No</b> 107 First Floor	<b>Item No</b> 60
<b>Title</b> Chairs (2)		
<b>Description</b> Cedar Trafalgar chairs, scroll shaped arms, curved top rail, stuff over seat upholstered in red-brown leather, buttoned along seat rail, turned front legs.		
<b>Date</b> Circa 1880	<b>Condition</b> Excellent	<b>Dimensions (W x D x H)</b> 47 x 52 x 89cm
<b>Photograph</b> 		
<b>Significance</b> High – original furnishing for Lands Department building.		
<b>Recommendation</b> Reunite chair with Item 46 and retain in situ.		


<b>Location</b> Lands Building	<b>Room No</b> 107 First Floor	<b>Item No</b> 61
<b>Title</b> Table		
<b>Description</b> Cedar side table, solid timber top, with moulded edge above the apron with shelf and gallery below, supported on four turned legs on brass and porcelain castors.. Modern centre support addition below shelf.		
<b>Date</b> Circa 1880	<b>Condition</b> Excellent	<b>Dimensions (W x D x H)</b> 152 x 38 x 74cm
<b>Photograph</b> 		
<b>Significance</b> High – item of original furnishing for Lands Department building.		
<b>Recommendation</b> Remove alteration and retain in situ. Black plinth adjacent not original to the room.		

<b>Location</b> Lands Building	<b>Room No</b> 107 First Floor	<b>Item No</b> 62
<b>Title</b> Cupboard (2)		
<b>Description</b> Cedar cupboard, on a plinth base, single hinged door with turned wooden handle, enclosing 1 shelf,		
<b>Date</b> Late 19 <sup>th</sup> /early 20 <sup>th</sup> century	<b>Condition</b> Excellent	<b>Dimensions (W x D x H)</b> 60 x 55 x 75cm
<b>Photograph</b> <div style="display: flex; justify-content: space-around; align-items: flex-start;">   </div>		
<b>Significance</b> Moderate – not considered original to the room.		
<b>Recommendation</b> May be relocated as not original to this room.		




<b>Location</b> Lands Building	<b>Room No</b> G20 First Floor	<b>Item No</b> 63
<b>Title</b> File tray		
<b>Description</b> Stained timber file tray, 2 partitions with shaped profile, baize to base.		
<b>Date</b> 20 <sup>th</sup> century	<b>Condition</b> Good	<b>Dimensions</b> (W x D x H) 80 x 41.5cm
<b>Photograph</b> 		
<b>Significance</b> Moderate		
<b>Recommendation</b> Not original but practical items which could be retained for current office function.		



<b>Location</b> Lands Building	<b>Room No</b> 107 First Floor	<b>Item No</b> 64
<b>Title</b> Lamps (2)		
<b>Description</b> Pair of baluster shaped bronze vases on a marble plinth base, (modern reproduction) etched glass shades, configured for electricity.		
<b>Date</b> Late 19 <sup>th</sup> century	<b>Condition</b> Good	<b>Dimensions</b> (W x D x H) 62cm height
<b>Photograph</b> 		
<b>Significance</b> Moderate – not identified as original to the Minister for Lands office, modified for electricity.		
<b>Recommendation</b> Not original but practical items which could be retained for current office function.		

<b>Location</b> Lands Building	<b>Room No</b> 107 First Floor	<b>Item No</b> 65
<b>Title</b> Jardiniere		
<b>Description</b> Glazed earthenware planter bowl on stand, painted enamel decoration, Chinese.		
<b>Date</b> Modern, circa 1980s	<b>Condition</b> Good	<b>Dimensions (W x D x H)</b> Bowl 39 x 41 diameter; base 49 x 41 diameter
<b>Photograph</b> 		
<b>Significance</b> Neutral		
<b>Recommendation</b> Not original but practical items which could be retained for current office function.		

<b>Location</b> Lands Building	<b>Room No 107</b> First Floor	<b>Item No</b> 66
<b>Title</b> Planter		
<b>Description</b> Glazed earthenware planter, painted enamel decoration, Chinese.		
<b>Date</b> Modern, circa 1980s	<b>Condition</b> Good	<b>Dimensions (W x D x H)</b> 46 ht, 54 diameter
<b>Photograph</b> 		
<b>Significance</b> Neutral		
<b>Recommendation</b> Not original but practical item which could be retained for current office function.		

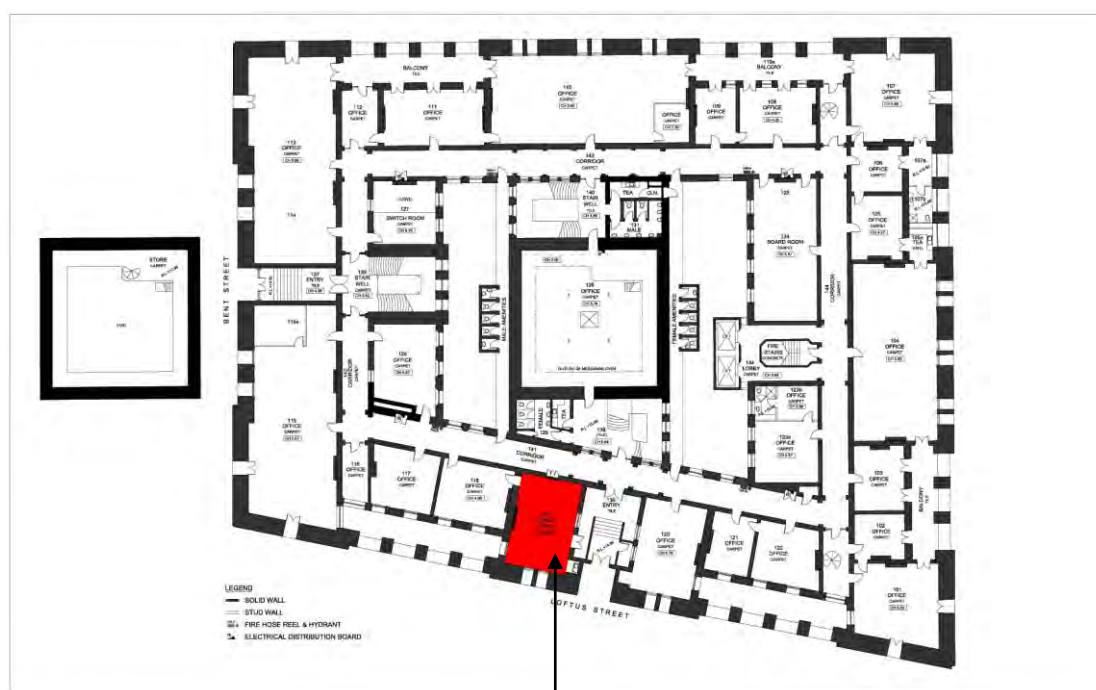
<b>Location</b> Lands Building	<b>Room No</b> 107 First Floor	<b>Item No</b> 67
<b>Title</b> Chesterfields (2)		
<b>Description</b> Two 2 seater chesterfields, upholstered in salmon coloured leather, probably made by Moran Leather.		
<b>Date</b> Circa 1980s	<b>Condition</b> Excellent	<b>Dimensions (W x D x H)</b> 184 x 88 x 79cm
<b>Photograph</b> 		
<b>Significance</b> Neutral		
<b>Recommendation</b> Not original but practical items which could be retained for current office function.		

<b>Location</b> Lands Building	<b>Room No</b> 107 First Floor	<b>Item No</b> 68
<b>Title</b> Table		
<b>Description</b> Rectangular tray table with folding sides secured with brass hinges, and cut out handles on of the folding sides, supported on four straight legs joined by an H-shaped stretcher. Not original to the office.		
<b>Date</b> Modern, circa 1980s	<b>Condition</b> Excellent	<b>Dimensions (W x D x H)</b> 120 x 90 x 53
<b>Photograph</b> <div style="display: flex; justify-content: space-around; align-items: center;">   </div>		
<b>Significance</b> Neutral		
<b>Recommendation</b> Not original but practical item which could be retained for current office function.		



## MEETING ROOM [119]

### First Floor



69

70

<b>Location</b> Lands Building	<b>Room No</b> 119 First Floor	<b>Item No</b> 69
<b>Title</b> Table (2 sections, 1 reproduction)		
<b>Description</b> Cedar meeting table, extendable with separate solid timber leaves, canted corners, double moulded edge to top, deep apron, four turned legs. One section has been over polished. Winding lever is original.		
<b>Date</b> Late 19 <sup>th</sup> century	<b>Condition</b> Good	<b>Dimensions (W x D x H)</b> Each section 171 x 128 x 80cm
<b>Photograph</b> 