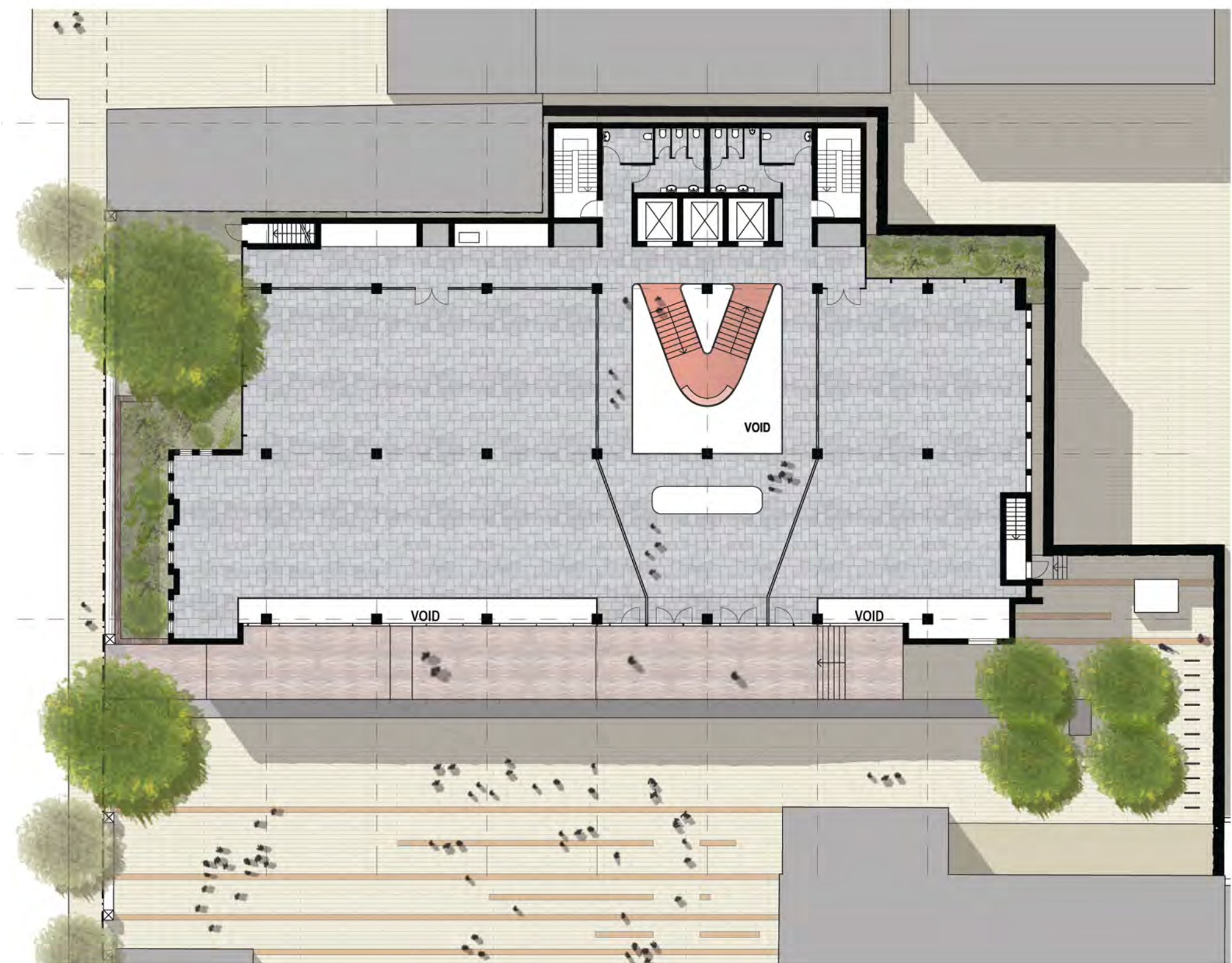
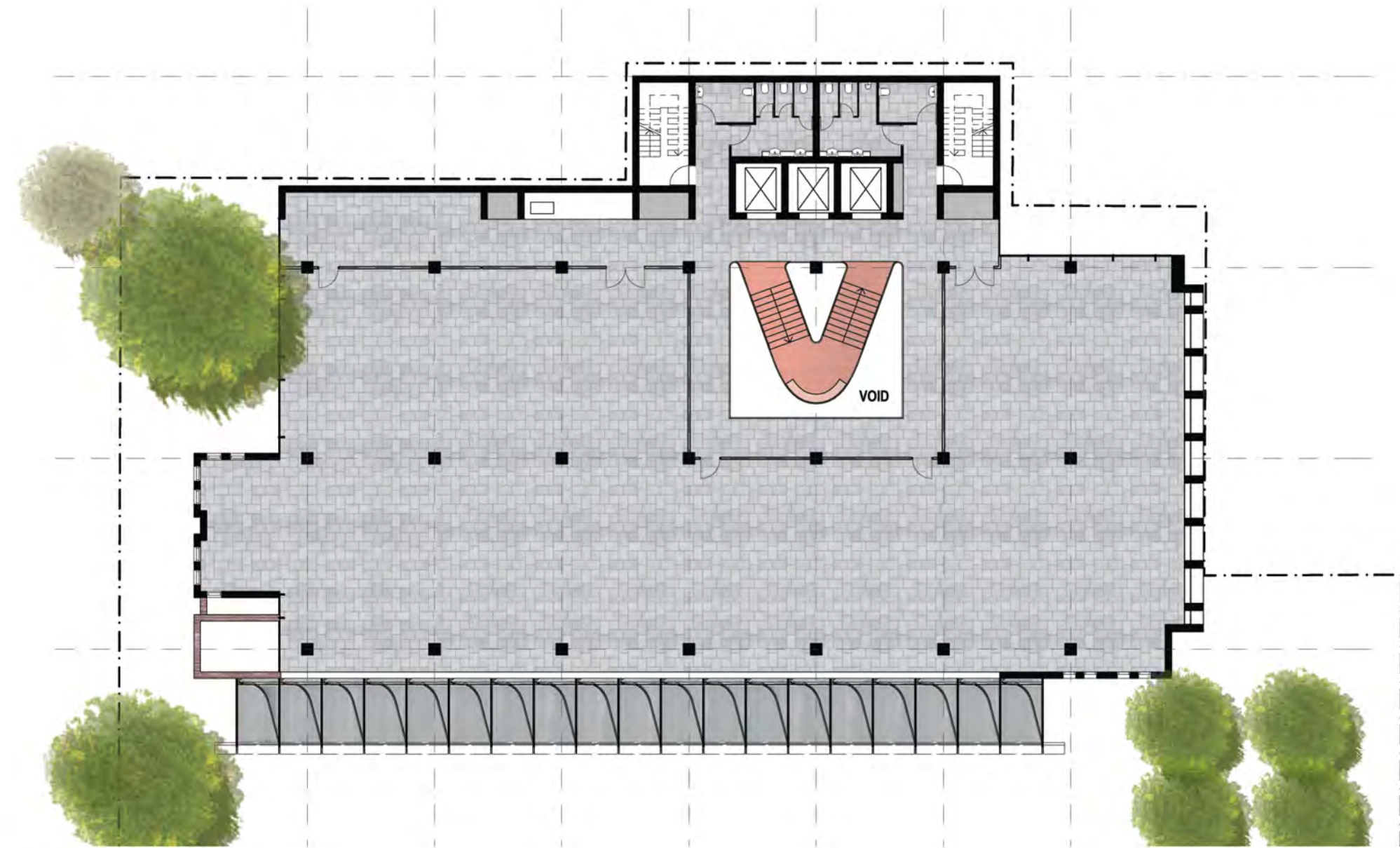


COMPETITION STAGE

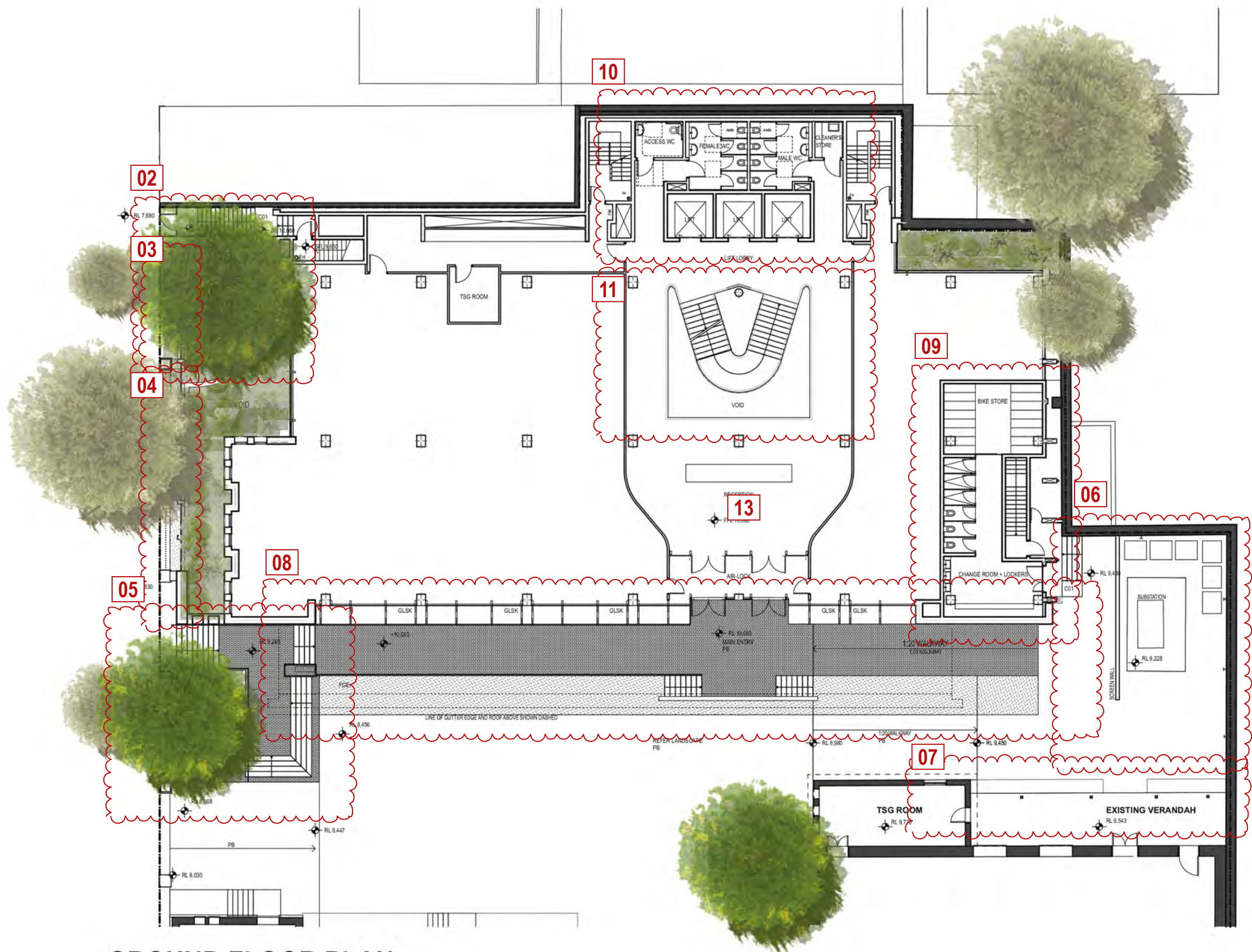


GROUND FLOOR PLAN

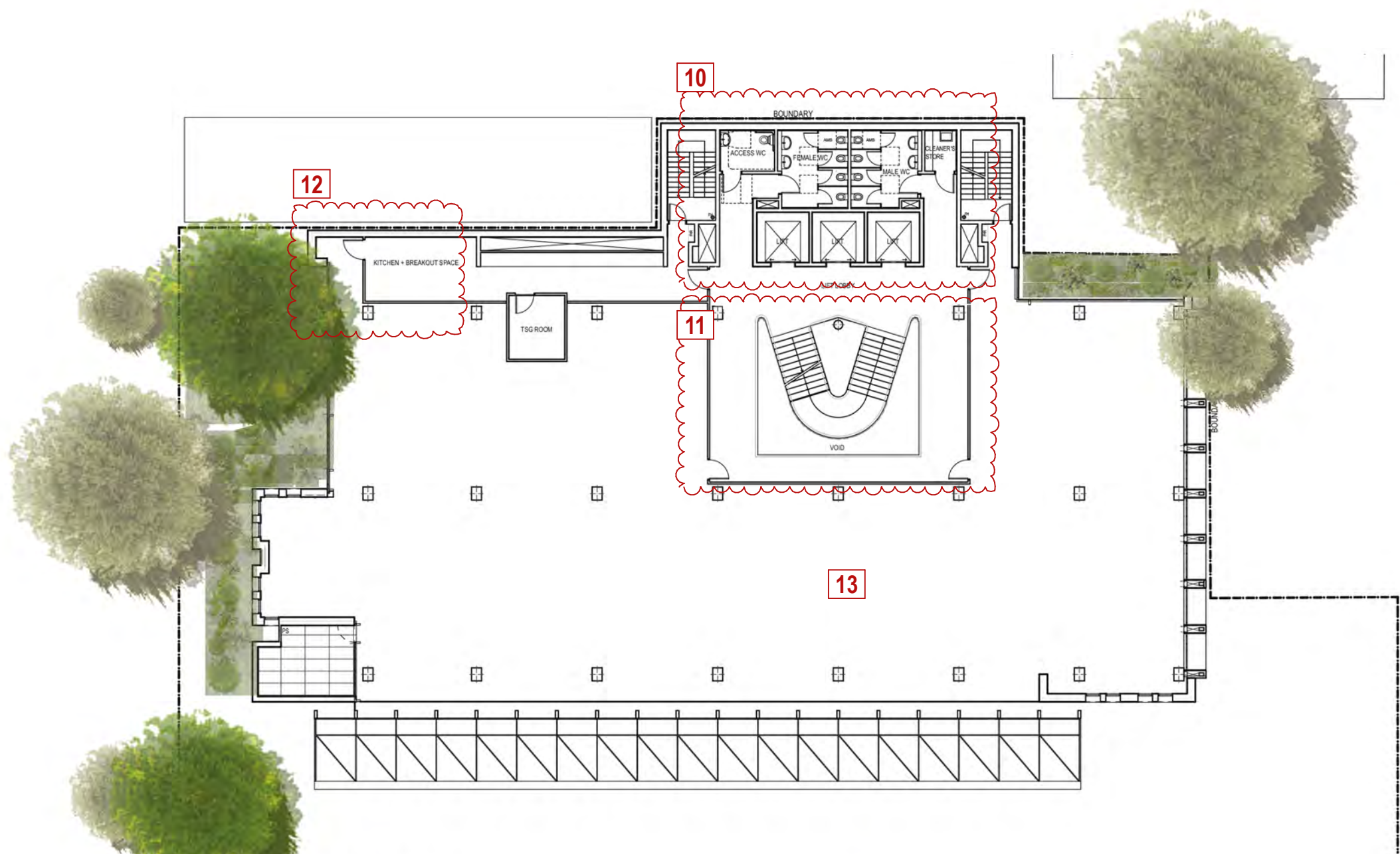


TYPICAL FLOOR PLAN


DESIGN REFINEMENT



GROUND FLOOR PLAN



TYPICAL FLOOR PLAN

Rev.	Description	Issue Date
1	MOD 1 SSD6746	20.08.2018
LEGEND		
01	Wholistic Public Domain approach adopted for the Blackfriars Precinct. Integrated landscape design proposed including additional four mature trees and renewal of south western corner of site with decking under existing large tree	
02	Existing T33 Jacaranda Tree replaced with new significant mature tree in its place	
03	Fire services enclosure integrated to Heritage fence	
04	New glazed fence for flood mitigation to Void, located east of existing heritage fence	
05	Existing T35 River Oak tree replaced with new significant mature tree in its place. Entry stair refinement to protect roots of tree and to meet new raised Ground Floor level of RL10.080	
06	Existing substation with easements required to be retained, so proposed landscaping modified to screen substation. Waste bin collection area dedicated to services area	
07	Minor modifications to allow substation easement access with removal of later verandah extension and steps and replacement of window with a new door opening to east	
08	Main entry redesigned to allow for new raised Ground Floor level of RL10.080 as per Flood requirements (No change to overall building height)	
09	Internal Bike Store and End of Trip Facilities added	
10	Amenities reconfigured to meet BCA WC requirements	
11	Atrium stairs adjusted to allow additional lobby space and to allow for fire requirements of building	
12	Improved facade modulation	
13	Rationalisation and development of Structure and Services	
14	Additional four new mature trees planted on site	
Consultants For all consultants contact details, Please refer to Page Coverage		
Notes Do not scale off drawings. Use figured dimensions only. Report any discrepancies to the architect. These designs, plans, specifications and the copyright therein are the property of Tonkin Zulaikha Greer Architects Pty Ltd, and must not be reproduced or copied wholly or in part without written permission of Tonkin Zulaikha Greer Architects Pty Ltd.		
Project Name UTS BLACKFRIARS INDUSTRY HUB		
 UTS UNIVERSITY OF TECHNOLOGY, SYDNEY FACILITIES MANAGEMENT OPERATIONS Tower, Building 1, Level 19, 15 Broadway Broadway NSW 2007 Ph: 9514-2000 Fax: 9514-4690		
Drawing Title UTS BLACKFRIARS CAMPUS CB23 A14 - DESIGN REFINEMENT FROM COMPETITION 2		
FMU Project Number 03013-C-18		
Drawn By SB, JH, JB, KP	Checked RS, KL	Approved By TG
Drawing Scale 1:250 @A1	Drawing Status DA	Date App. 00-00-18
UTS Drg File Name	UTS Drg File No 70014	Rev No 1