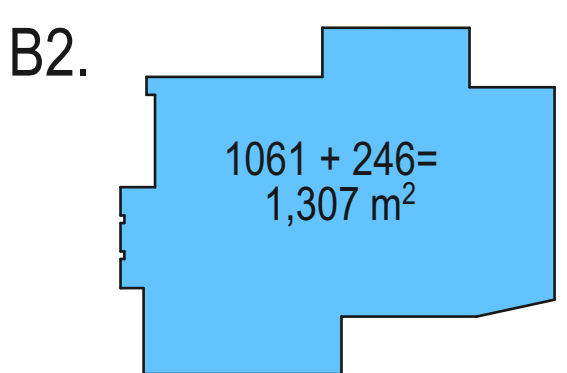
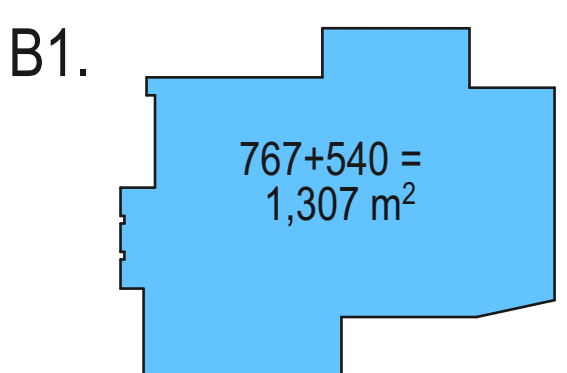
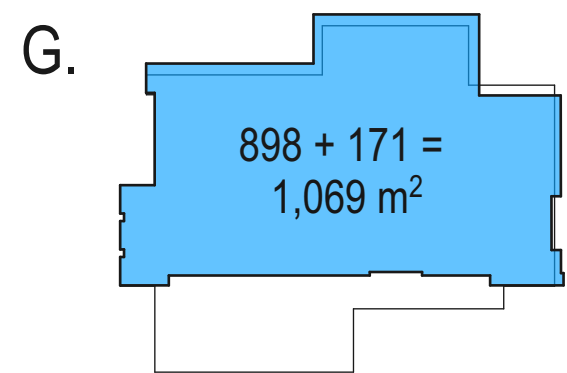
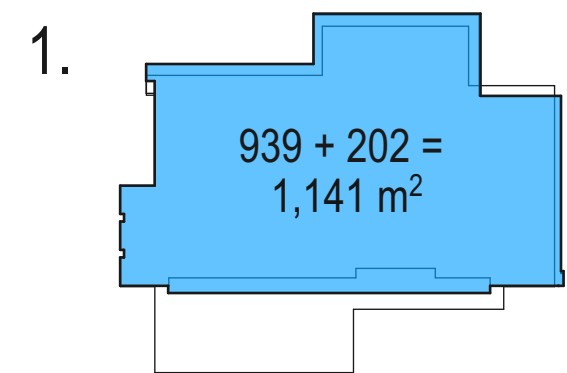
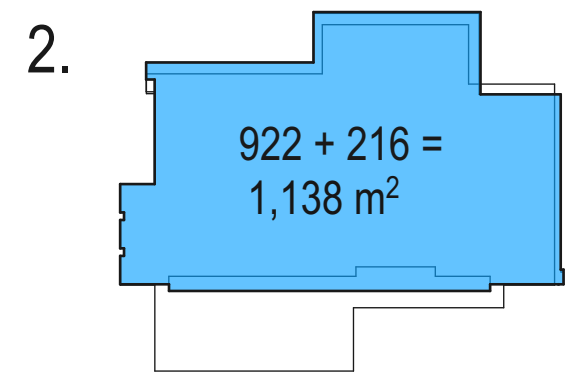
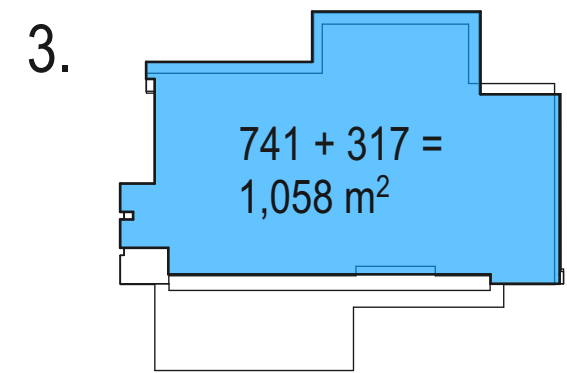
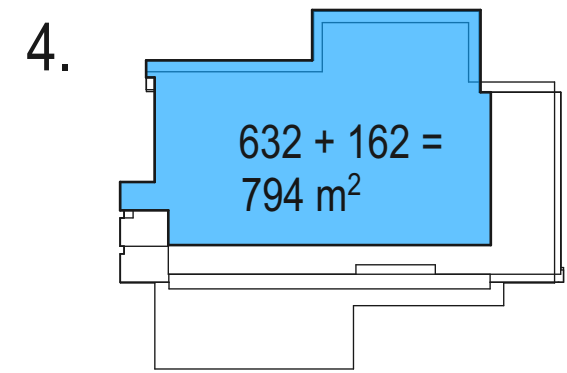
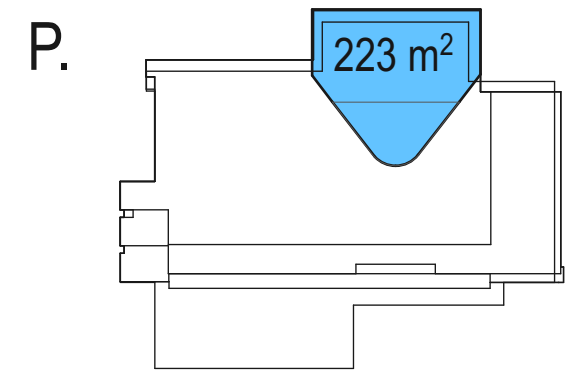


PROPOSED ENVELOPE PLAN 1:250 @A1



GROSS FLOOR AREA - SERVICES + VOIDS + BALCONIES - 5960 m2*
GROSS BUILDING AREA - 2077 m2
8037 m2**

*Gross Floor Area calculation based on Sydney LEP 2012 Definition.
**Gross Building Area calculation based on UTS Design Guidelines Definition

| Rev. | Description | Issue Date |
|------|---------------|------------|
| 1 | MOD 1 SSD6746 | 20.08.2018 |

N

Consultants
For all consultants contact details, Please refer to Page Coverpage

Notes
Do not scale off drawings. Use figured dimensions only. Report any discrepancies to the architect. These designs, plans, specifications and the copyright therein are the property of Tonkin Zulaikha Greer Architects Pty Ltd, and must not be reproduced or copied wholly or in part without written permission of Tonkin Zulaikha Greer Architects Pty Ltd.

Project Name
UTS BLACKFRIARS
INDUSTRY HUB

UTS

UNIVERSITY OF TECHNOLOGY, SYDNEY
FACILITIES MANAGEMENT OPERATIONS
Tower, Building 1, Level 19, 15 Broadway
Broadway NSW 2007
Ph: 9514-2000 Fax: 9514-4690

Drawing Title
UTS BLACKFRIARS CAMPUS CB23
A02 - PROPOSED BUILDING
ENVELOPE PLAN

FMU Project Number
03013-C-18

Drawn By
SB, JH, JB, KP

Checked
RS, KL

Approved By
TG

Date App.
00-00-18

Drawing Scale
1:250 @A1

Drawing Status
DA

A1

UTS Drg File Name

UTS Drg File No
70002

Rev No
1