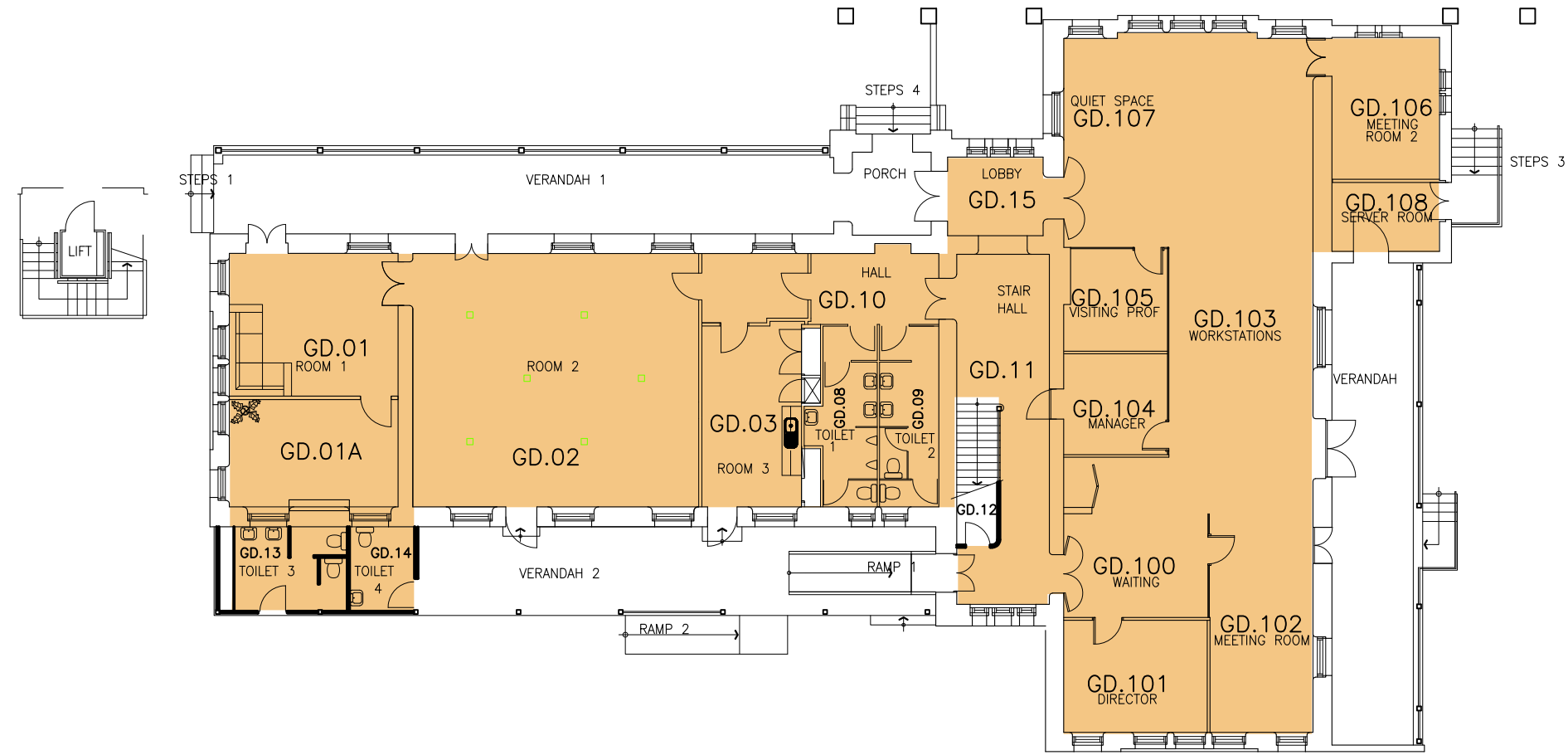


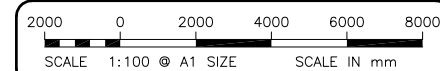
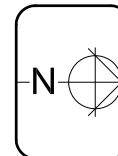
BUILDING 22:  
LEVEL GD: 449m<sup>2</sup>



SITE CONTAINS CONTAMINATED FILL. CONTRACTORS SHALL FOLLOW THE SITE MANAGEMENT PLAN FOR THE MANAGEMENT OF SOIL CONTAMINATION. A COPY OF THIS PLAN IS AVAILABLE FROM FACILITIES MANAGEMENT UNIT PHONE ON (02) 95142830 .



**CITY CAMPUS  
BLACKFRIARS, BUILDING 22  
LEVEL GD**



Rev 1 CNC UPGRADE, JAN 2015, CARRICK UPGRADE, OCT 2006

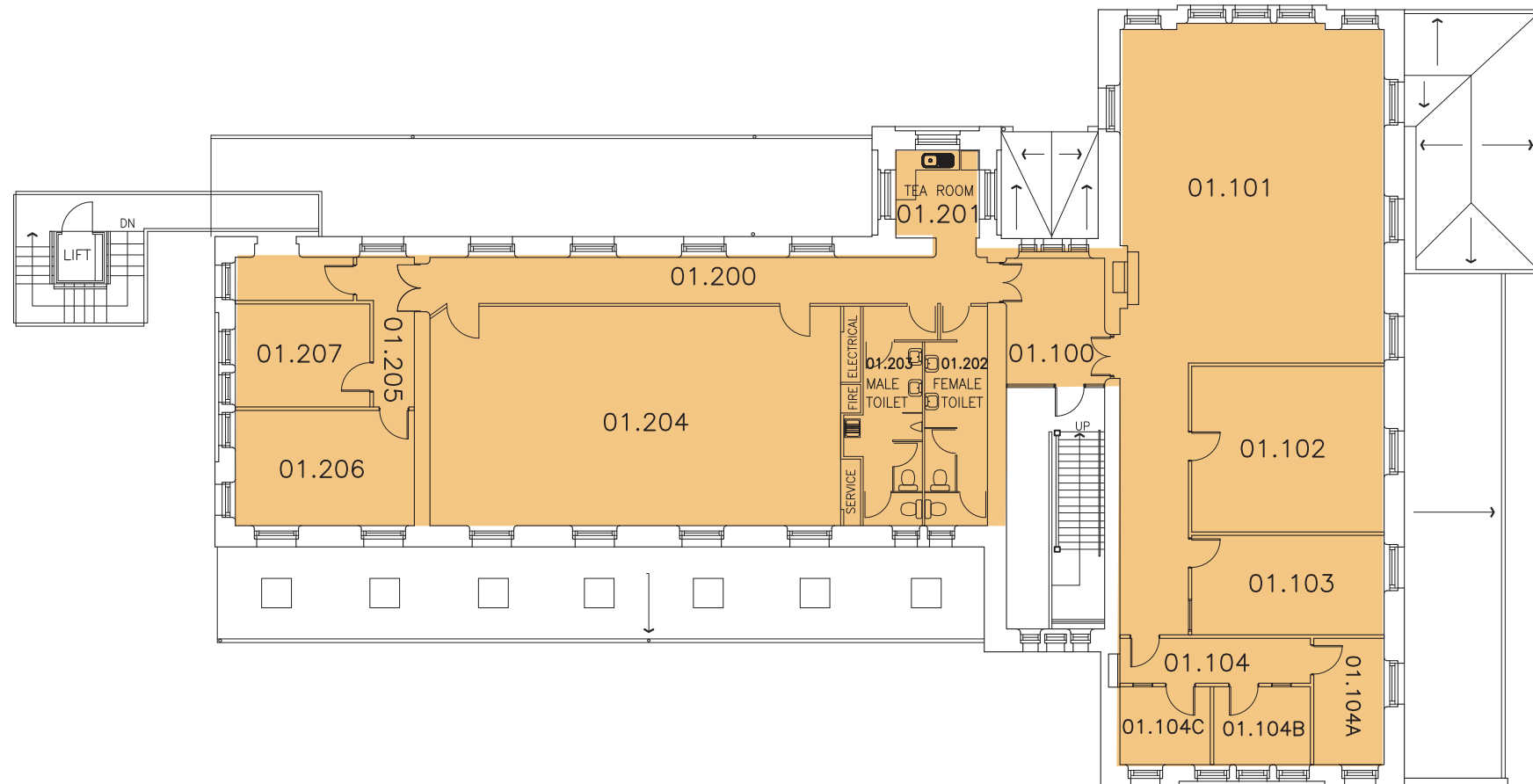
Facilities Management Operations

AS BUILT JANUARY 2015

CB22GDAP-04724\_01

AMENDMENT IN PROGRESS

BUILDING 22:  
LEVEL 01: 383m<sup>2</sup>

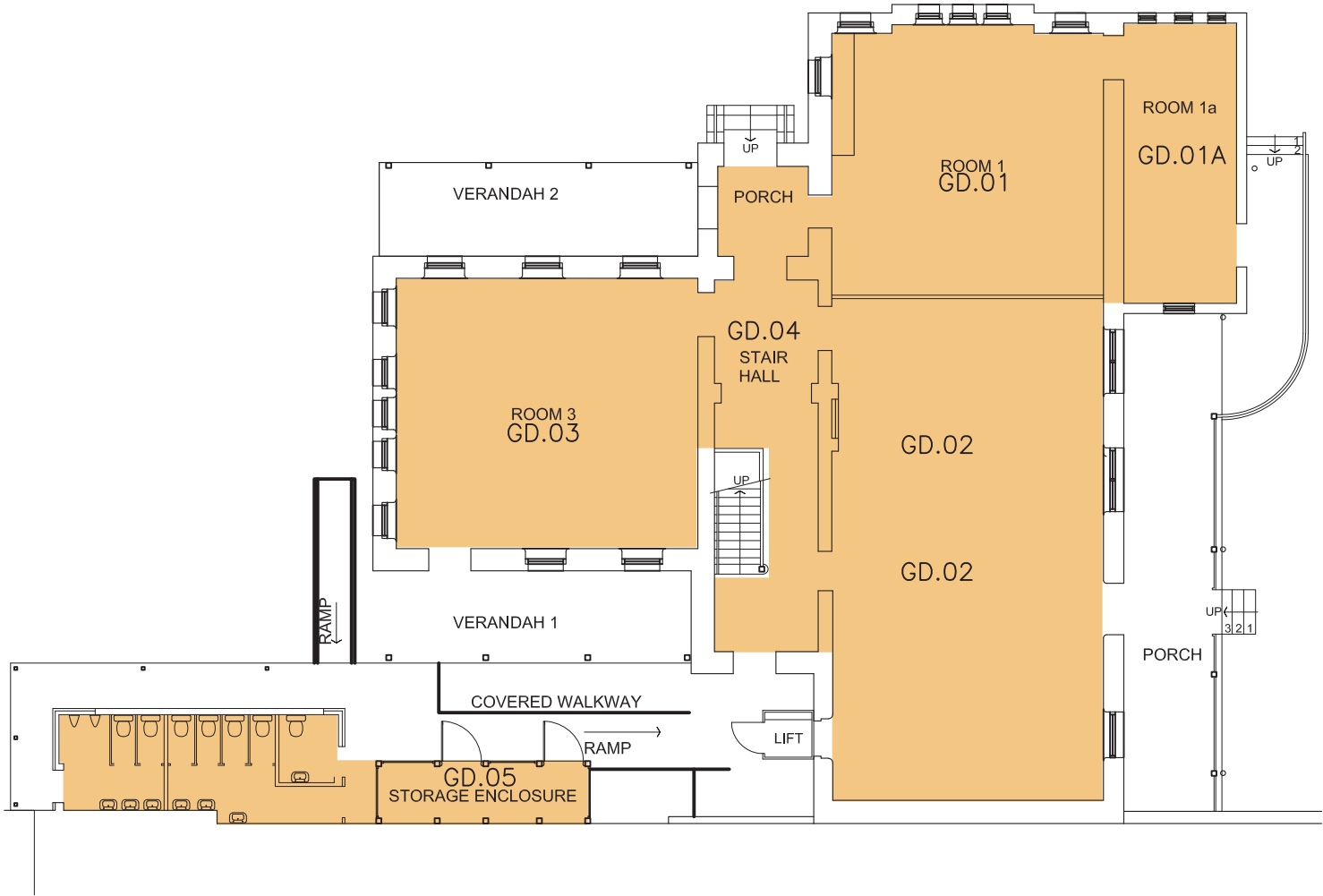


SITE CONTAINS CONTAMINATED FILL. CONTRACTORS SHALL FOLLOW THE  
SITE MANAGEMENT PLAN FOR THE MANAGEMENT OF SOIL CONTAMINATION.  
A COPY OF THIS PLAN IS AVAILABLE FROM FACILITIES MANAGEMENT UNIT  
PHONE ON (02) 95142830 .



AMENDMENT IN PROGRESS

BUILDING 25:  
LEVEL GD: 368m<sup>2</sup>



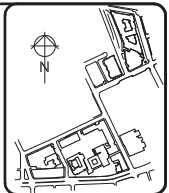
SITE CONTAINS CONTAMINATED FILL. CONTRACTORS SHALL FOLLOW THE SITE MANAGEMENT PLAN FOR THE MANAGEMENT OF SOIL CONTAMINATION. A COPY OF THIS PLAN IS AVAILABLE FROM FACILITIES MANAGEMENT UNIT PHONE ON (02) 95142830 .



CITY CAMPUS  
BLACKFRIARS, BUILDING 25  
LEVEL GD



Rev 0 OLD KITCHEN WALL MOVED, JAN 2010  
OFFICES DELETED, DEC 2006



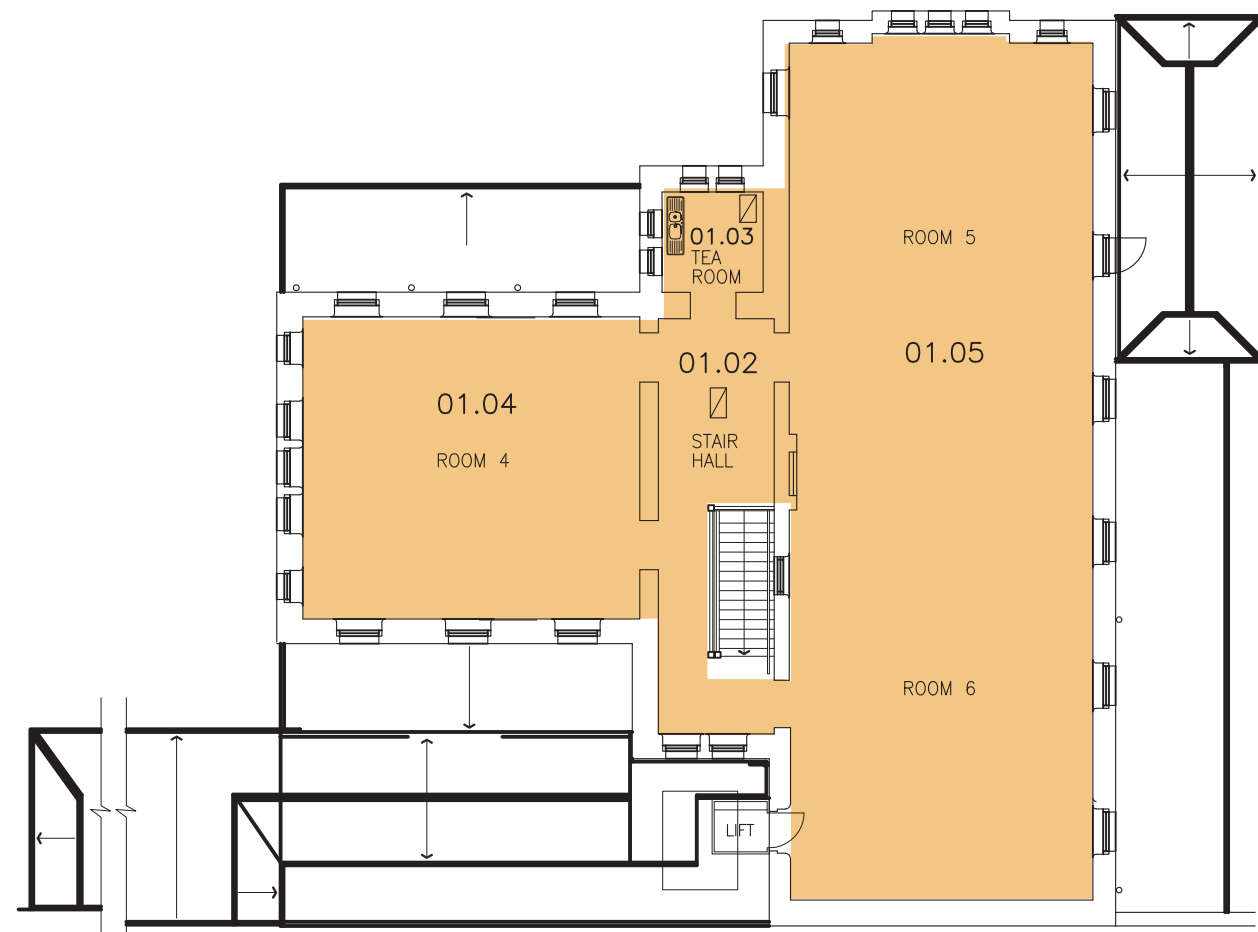
Facilities Management Operations

AS BUILT JANUARY 2010

CB25GDAP-04726\_00

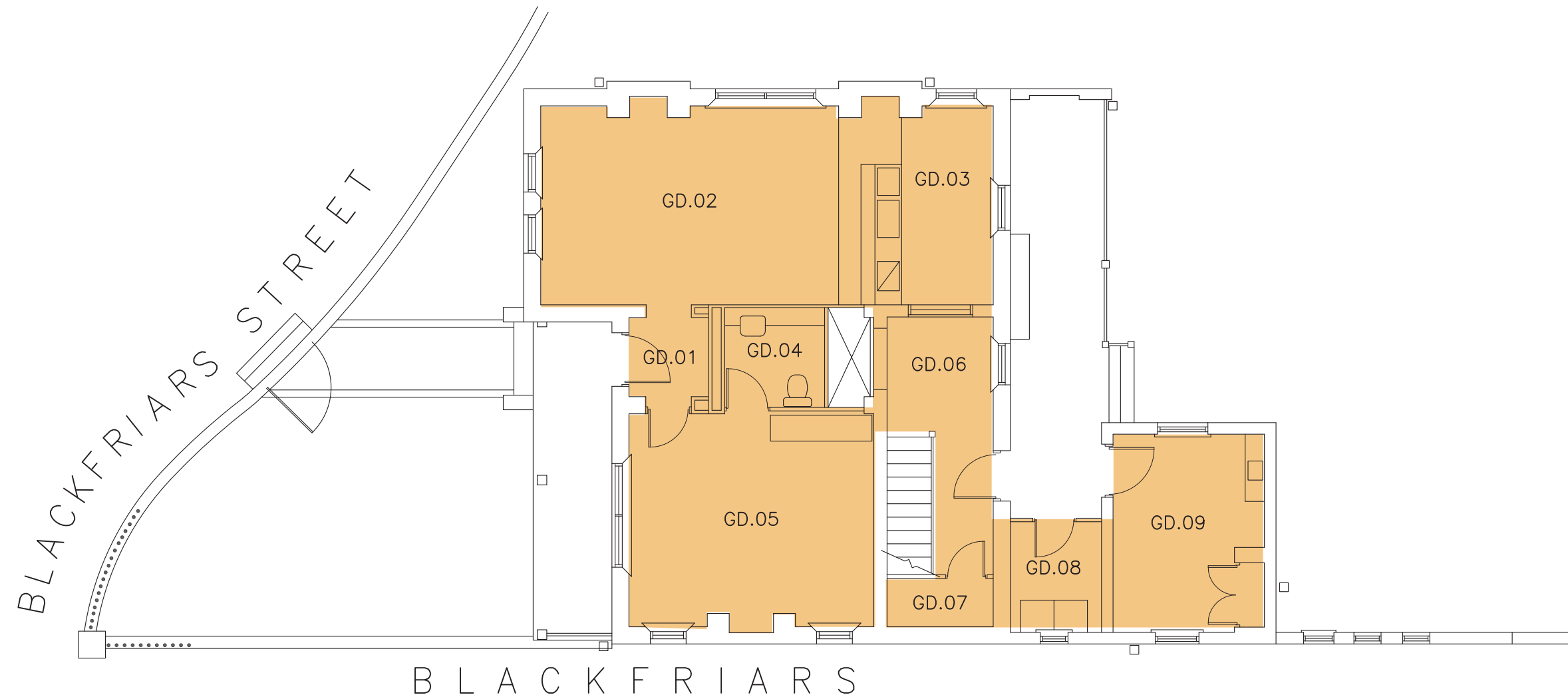
BUILDING 25:

LEVEL 01: 295m<sup>2</sup>



SITE CONTAINS CONTAMINATED FILL. CONTRACTORS SHALL FOLLOW THE SITE MANAGEMENT PLAN FOR THE MANAGEMENT OF SOIL CONTAMINATION. A COPY OF THIS PLAN IS AVAILABLE FROM FACILITIES MANAGEMENT UNIT PHONE ON (02) 95142830 .

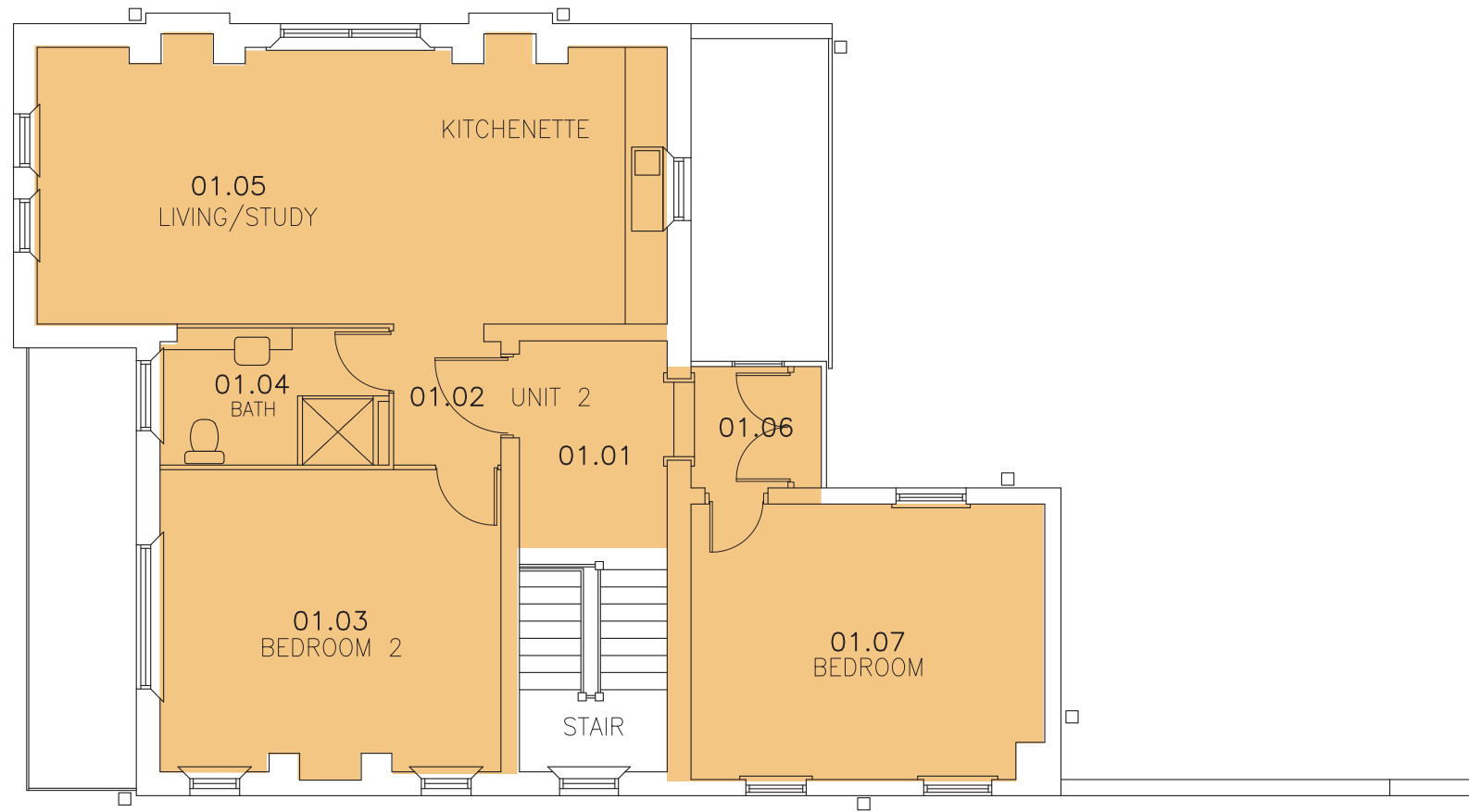
BUILDING 27:  
LEVEL GD: 90m<sup>2</sup>



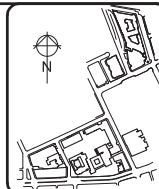
GROUND FLOOR PLAN – UNIT 1

AMENDMENT IN  
PROGRESS

BUILDING 27:  
LEVEL 01: 100m<sup>2</sup>



FIRST FLOOR PLAN – UNIT 2



AMENDMENT IN  
PROGRESS