

[illegible]

A01.001[A]

Sydney 43 Brisbane Street
Surry Hills NSW 2010 Australia
T 02 8354 5100 F 02 8354 5199
email syd@batessmart.com.au
<http://www.batessmart.com.au>

BATESSMART™



PRELIMINARY
NOT FOR CONSTRUCTION

- Existing Site Buildings
- Existing Surrounding Buildings

A	26.11.14 Issue for DA	JH	BD
Revision Date	Description	Initial	Checked

Revision Date	Description	Initial	Checked

60-78 Regent St
Redfern
Existing Condition



Check all dimensions and site conditions prior to commencement of any work, the purchase or ordering of any materials, fittings, plant, services or equipment and the preparation of shop drawings and/or the fabrication of any components.
All drawings to be read in conjunction with all architectural documents and all other consultants documents.
Do not scale drawings - refer to figured dimensions only. Any discrepancies shall immediately be referred to the architect for clarification.
All drawings may not be reproduced or distributed without prior permission from the architect.



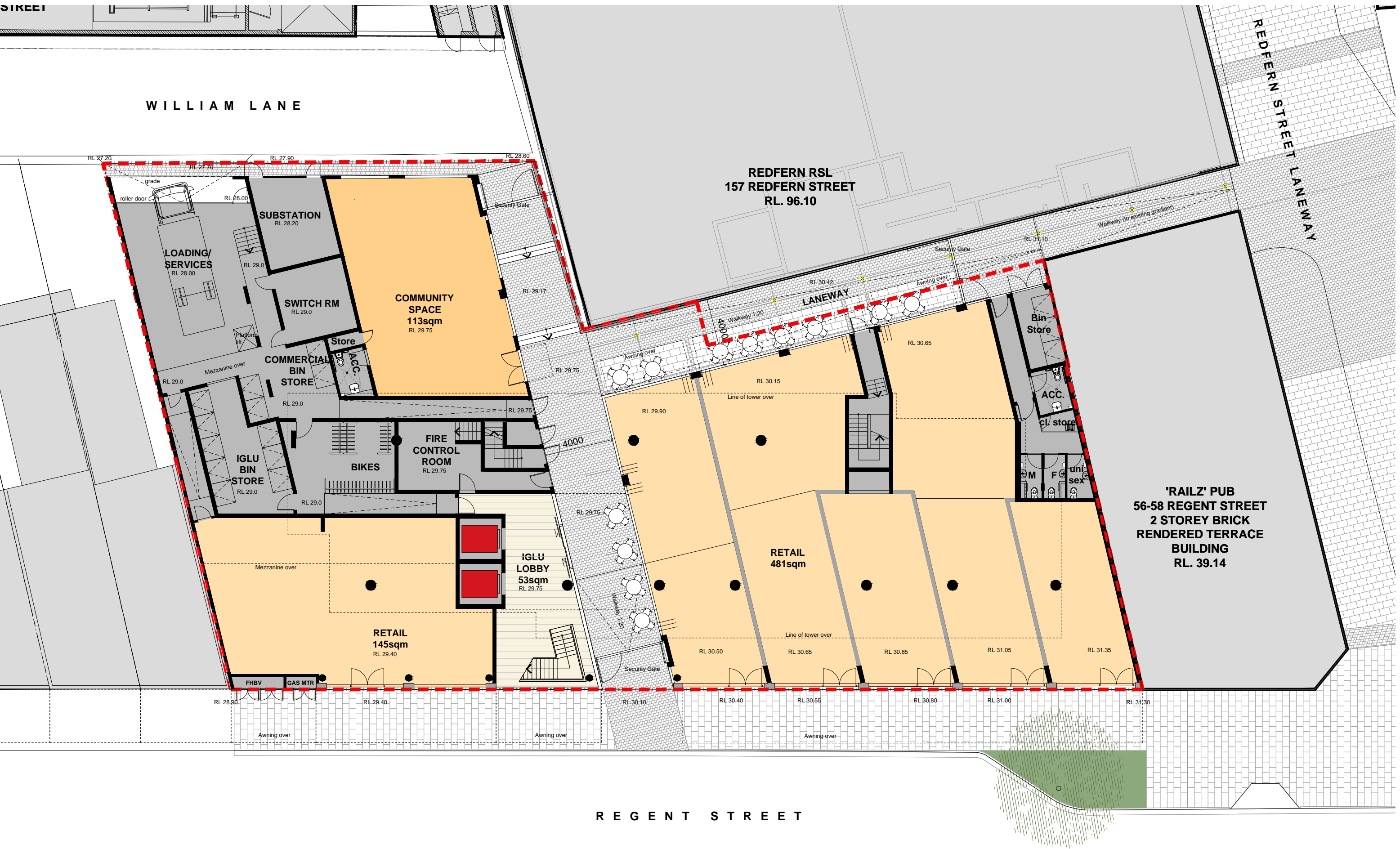
Scale	1:200 @ A3		
Drawn	JH	Checked	BD
Project No.	S11798		
Status	DA		
Plot Date	26/11/2014 4:25:12 PM		
Plot File	S:\11700-11798\11798_iglu_regentstredfem00_maincad\plots\... ---DA01.002[A].dwg		
Drawing No.		[Revision]	

Melbourne 1 Nicholson Street
Melbourne VIC 3000 Australia
T 03 8664 6200 F 03 8664 6300
email melb@batesmart.com.au
http://www.batesmart.com.au

Sydney 43 Brisbane Street
Surry Hills NSW 2010 Australia
T 02 8354 5100 F 02 8354 5199
email syd@batesmart.com.au
http://www.batesmart.com.au

Bates Smart Pty Ltd ABN 70 004 999 400

BATESSMART



PRELIMINARY
NOT FOR CONSTRUCTION

A	26.11.14	Issue for DA	JH	BD	
Revision Date	Description	Initial	Checked	Revision Date	Description

60-78 Regent St
Redfern
Ground Floor Plan



Check all dimensions and site conditions prior to commencement of any work, the purchase or ordering of any materials, fittings, plant, services or equipment and the preparation of shop drawings and/or the fabrication of any components.
All drawings to be read in conjunction with all architectural documents and all other consultants documents.
Do not scale drawings - refer to figured dimensions only. Any discrepancies shall immediately be referred to the architect for clarification.
All drawings may not be reproduced or distributed without prior permission from the architect.



Scale	1:200 @ A3		
Drawn	JH	Checked	BD
Project No.	S11798		
Status	DA		
Plot Date	26/11/2014 4:25:31 PM		
Plot File	S:\11700-11798\11798_iglu_regentstredem\00_main\cadplot9... ---DA\A02.000\A.dwg		
Drawing No.	[Revision]		

A02.000[A]

Melbourne 1 Nicholson Street
Melbourne VIC 3000 Australia
T 03 8664 6200 F 03 8664 6300
email melb@batesmart.com.au
http://www.batesmart.com.au

Bates Smart Pty Ltd ABN 70 004 999 400

Sydney 43 Brisbane Street
Surry Hills NSW 2010 Australia
T 02 8354 5100 F 02 8354 5199
email syd@batesmart.com.au
http://www.batesmart.com.au

BATESSMART

STREET

WILLIAM LANE

REDFERN STREET LANEWAY

REDFERN RSL
157 REDFERN STREET
RL. 96.10



R E G E N T S T R E E T

PRELIMINARY
NOT FOR CONSTRUCTION

A	26.11.14	Issue for DA	JH	BD			
Revision Date	Description	Initial	Checked	Revision Date	Description	Initial	Checked

60-78 Regent St
Redfern
Typical Plan (Accessible)
Levels 02-05



Check all dimensions and site conditions prior to commencement of any work, the purchase or ordering of any materials, fittings, plant, services or equipment and the preparation of shop drawings and/or the fabrication of any components.
All drawings to be read in conjunction with all architectural documents and all other consultative documents.
Do not scale drawings - refer to figured dimensions only. Any discrepancies shall immediately be referred to the architect for clarification.
All drawings may not be reproduced or distributed without prior permission from the architect.



Scale	1:200 @ A3		
Drawn	JH	Checked	BD
Project No.	S11798		
Status	DA		
Plot Date	9/3/2014 5:13 PM		
Plot File	S:\11700-11798\11798_iglu_regentstredferm00_main\cad\plots\... ...DA02.002\A.dwg		
Drawing No.		[Revision]	

Melbourne 1 Nicholson Street
Melbourne VIC 3000 Australia
T 03 8664 6200 F 03 8664 6300
email melb@batesmart.com.au
http://www.batesmart.com.au

Bates Smart Pty Ltd ABN 70 004 999 400

Sydney 43 Brisbane Street
Surry Hills NSW 2010 Australia
T 02 8354 5100 F 02 8354 5199
email syd@batesmart.com.au
http://www.batesmart.com.au

BATESSMART



60-78 Regent St
Redfern
Typical Plan
Levels 06-17



Check all dimensions and site conditions prior to commencement of any work, the purchase or ordering of any materials, fittings, plant, services or equipment and the preparation of shop drawings and/or the fabrication of any components.

All drawings to be read in conjunction with all architectural documents and all other consultants documents.

Do not scale drawings - refer to figured dimensions only. Any discrepancies shall immediately be referred to the architect for clarification.

All drawings may not be reproduced or distributed without prior permission from the architect.

Scale	1:200 @ A3	
Drawn	JH	Checked BD
Project No.	S11798	
Status	DA	
Plot Date	9/3/2014 5:13 PM	
Plot File	S:\1700-1798\1798_iglu_regentstredferm00_main\cad\plots\... ...DA92.000\1.dwg	
Drawing No.		[Revision]

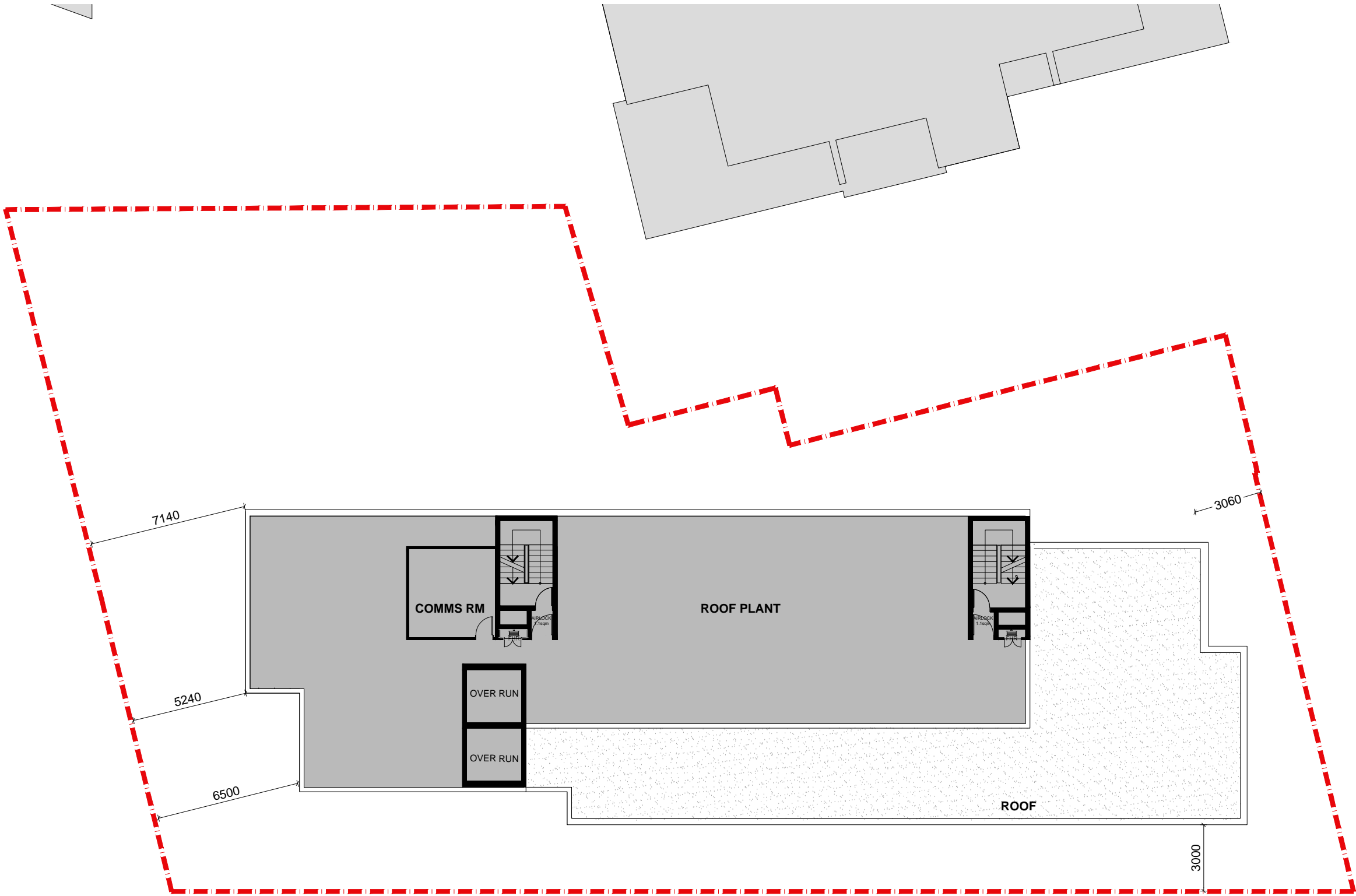
A02.008[A]

Melbourne 1 Nicholson Street
Melbourne VIC 3000 Australia
T 03 8664 6200 F 03 8664 6300
email melb@batesmart.com.au
<http://www.batesmart.com.au>

Sydney 43 Brisbane Street
Surry Hills NSW 2010 Australia
T 02 8354 5100 F 02 8354 5199
email syd@batesmart.com.au
<http://www.batesmart.com.au>

Bates Smart Pty Ltd ABN 70 004 999 400

BATESSMART™



PRELIMINARY
NOT FOR CONSTRUCTION

A	26.11.14 Issue for DA	JH	BD
Revision Date	Description	Initial	Checked

Revision Date	Description	Initial	Checked

60-78 Regent St
Redfern
Roof Terrace Plan



Check all dimensions and site conditions prior to commencement of any work, the purchase or ordering of any materials, fittings, plant, services or equipment and the preparation of shop drawings and/or the fabrication of any components.
All drawings to be read in conjunction with all architectural documents and all other consultative documents.
Do not scale drawings - refer to figured dimensions only. Any discrepancies shall immediately be referred to the architect for clarification.
All drawings may not be reproduced or distributed without prior permission from the architect.



Scale	1:200 @ A3		
Drawn	JH	Checked	BD
Project No.	S11798		
Status	DA		
Plot Date	26/11/2014 4:26:08 PM		
Plot File	S:\11700-11798\11798_iglu_regentstredferm00_maincad\plots\... ... DWG219[A].dwg		
Drawing No.		[Revision]	

Melbourne 1 Nicholson Street
Melbourne VIC 3000 Australia
T 03 8664 6200 F 03 8664 6300
email melb@batesmart.com.au
http://www.batesmart.com.au

Sydney 43 Brisbane Street
Surry Hills NSW 2010 Australia
T 02 8354 5100 F 02 8354 5199
email syd@batesmart.com.au
http://www.batesmart.com.au

Bates Smart Pty Ltd ABN 70 004 999 400

BATESSMART™

PRELIMINARY
NOT FOR CONSTRUCTION

A	26.11.14 Issue for DA	JH	BD
Revision Date	Description	Initial	Checked

Revision Date	Description	Initial	Checked

60-78 Regent St
Redfern
Basement Plan



Check all dimensions and site conditions prior to commencement of any work, the purchase or ordering of any materials, fittings, plant, services or equipment and the preparation of shop drawings and/or the fabrication of any components.
All drawings to be read in conjunction with all architectural documents and all other consultants documents.
Do not scale drawings - refer to figured dimensions only. Any discrepancies shall immediately be referred to the architect for clarification.
All drawings may not be reproduced or distributed without prior permission from the architect.



Scale	1:200 @ A3		
Drawn	JH	Checked	BD
Project No.	S11798		
Status	DA		
Plot Date	26/11/2014 4:26:13 PM		
Plot File	S:\11700-11798\11798_iglu_regentsredfern\00_maincad\plot1... ... A02.B01[A]dwg		
Drawing No.	A02.B01[A]		
	[Revision]		

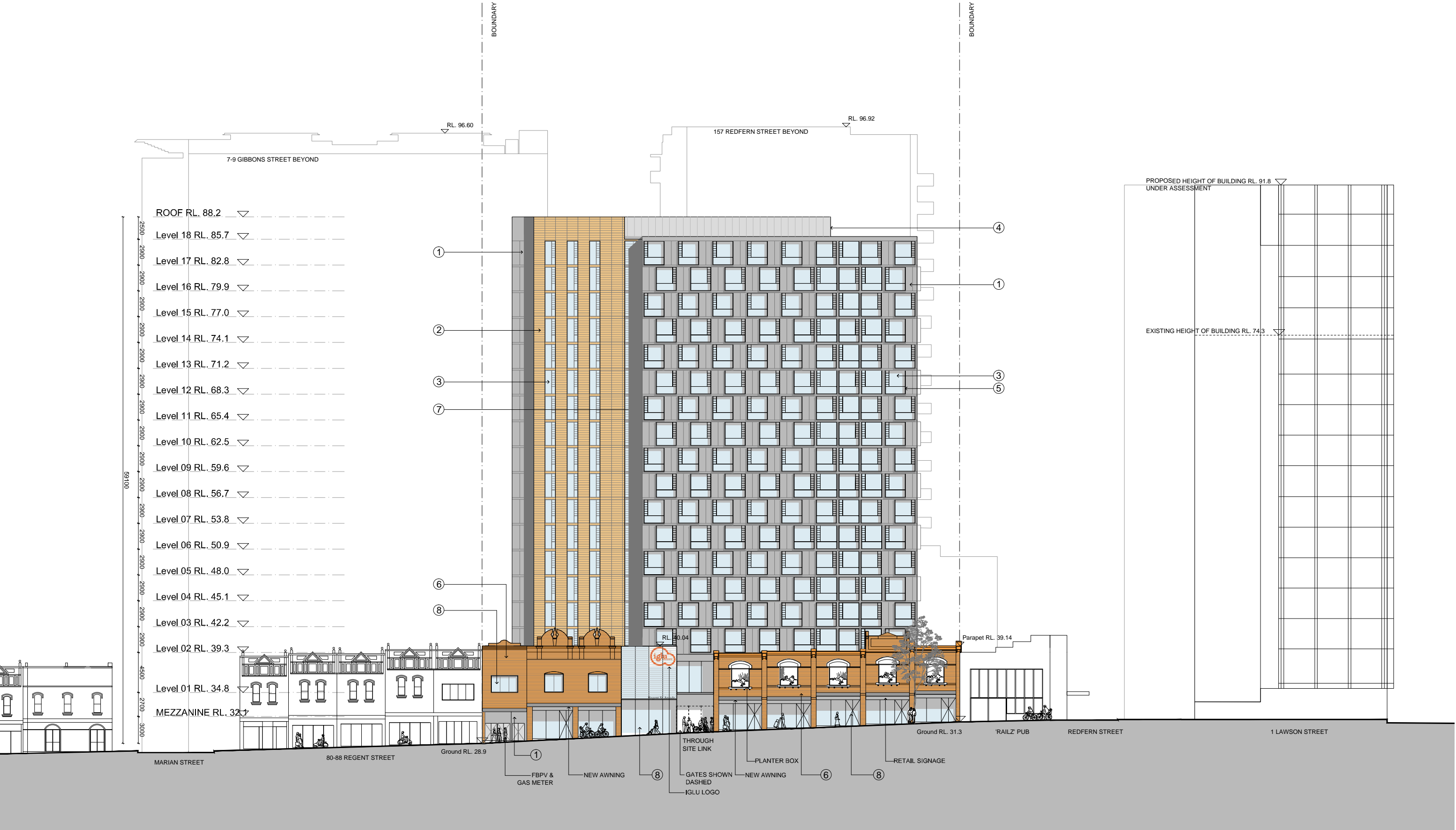
A02.B01[A]

Melbourne 1 Nicholson Street
Melbourne VIC 3000 Australia
T 03 8664 6200 F 03 8664 6300
email melb@batesmart.com.au
http://www.batesmart.com.au

Sydney 43 Brisbane Street
Surry Hills NSW 2010 Australia
T 02 8354 5100 F 02 8354 5199
email syd@batesmart.com.au
http://www.batesmart.com.au

Bates Smart Pty Ltd ABN 70 004 999 400

BATESSMART™



PRELIMINARY
NOT FOR CONSTRUCTION

MATERIALS LEGEND

- 1. Aluminium cladding panel
- 2. Terracotta cladding panel
- 3. Window system (Vision glass, glass louvres & spandrel)
- 4. Aluminium screen
- 5. Expressed aluminium sunshade
- 6. Existing face brickwork
- 7. Glass louvres
- 8. Vision glass
- 9. New brickwork

A		26.11.14	Issue for DA	JH	BD
Revision	Date	Description	Initial	Checked	

Revision	Date	Description	Initial	Checked	

60-78 Regent St
Redfern
East Elevation



Check all dimensions and site conditions prior to commencement of any work, the purchase or ordering of any materials, fittings, plant, services or equipment and the preparation of shop drawings and/or the fabrication of any components.
All drawings to be read in conjunction with all architectural documents and all other consultants documents.
Do not scale drawings - refer to figured dimensions only. Any discrepancies shall immediately be referred to the architect for clarification.
All drawings may not be reproduced or distributed without prior permission from the architect.

Scale	1:400 @ A3
Drawn	JH
Checked	BD
Project No.	S11798
Status	DA
Plot Date	26/11/2014 4:26:28 PM
Plot File	S:\11700-11798\11798_iglu_regentstredfermi00_main\cad\plots\... ...DA07.001[A].dmg
Drawing No.	A07.001[A]
[Revision]	

Melbourne 1 Nicholson Street
Melbourne VIC 3000 Australia
T 03 8664 6200 F 03 8664 6300
email melb@batesmart.com.au
http://www.batesmart.com.au

Bates Smart Pty Ltd ABN 70 004 999 400

Sydney 43 Brisbane Street
Surry Hills NSW 2010 Australia
T 02 8354 5100 F 02 8354 5199
email syd@batesmart.com.au
http://www.batesmart.com.au

BATESSMART



PRELIMINARY
NOT FOR CONSTRUCTION

MATERIALS LEGEND

- | | |
|---|------------------|
| 1. Aluminium cladding panel | 8. Vision glass |
| 2. Terracotta cladding panel | 9. New brickwork |
| 3. Window system (Vision glass, glass louvres & spandrel) | |
| 4. Aluminium screen | |
| 5. Expressed aluminium sunshade | |
| 6. Existing face brickwork | |
| 7. Glass louvres | |

A		26.11.14	Issue for DA	JH	BD
Revision	Date	Description	Initial	Checked	

Revision	Date	Description	Initial	Checked	

60-78 Regent St
Redfern
West Elevation



Check all dimensions and site conditions prior to commencement of any work, the purchase or ordering of any materials, fittings, plant, services or equipment and the preparation of shop drawings and/or the fabrication of any components.
All drawings to be read in conjunction with all architectural documents and all other consultative documents.
Do not scale drawings - refer to figured dimensions only. Any discrepancies shall immediately be referred to the architect for clarification.
All drawings may not be reproduced or distributed without prior permission from the architect.

Scale	1:400 @ A3	
Drawn	JW	Checked BD
Project No.	S11798	
Status	DA	
Plot Date	26/11/2014 4:26:35 PM	
Plot File	S:\11700-11798\11798_iglu_regentstredfern\00_main\cad\plots\... ... A07.002[A].dwg	
Drawing No.	A07.002[A]	
	[Revision]	

Melbourne 1 Nicholson Street
Melbourne VIC 3000 Australia
T 03 8664 6200 F 03 8664 6300
email melb@batesmart.com.au
http://www.batesmart.com.au

Sydney 43 Brisbane Street
Surry Hills NSW 2010 Australia
T 02 8354 5100 F 02 8354 5199
email syd@batesmart.com.au
http://www.batesmart.com.au

Bates Smart Pty Ltd ABN 70 004 999 400

BATESSMART



PRELIMINARY
NOT FOR CONSTRUCTION

MATERIALS LEGEND

- | | |
|---|------------------|
| 1. Aluminium cladding panel | 8. Vision glass |
| 2. Terracotta cladding panel | 9. New brickwork |
| 3. Window system (Vision glass, glass louvres & spandrel) | |
| 4. Aluminium screen | |
| 5. Expressed aluminium sunshade | |
| 6. Existing face brickwork | |
| 7. Glass louvres | |

A	26.11.14 Issue for DA	JH	BD
Revision	Date	Description	Initial Checked

Revision	Date	Description	Initial Checked

60-78 Regent St
Redfern
North Elevation



Check all dimensions and site conditions prior to commencement of any work, the purchase or ordering of any materials, fittings, plant, services or equipment and the preparation of shop drawings and/or the fabrication of any components.
All drawings to be read in conjunction with all architectural documents and all other consultants documents.
Do not scale drawings - refer to figured dimensions only. Any discrepancies shall immediately be referred to the architect for clarification.
All drawings may not be reproduced or distributed without prior permission from the architect.

Scale	1:400 @ A3		
Drawn	JW	Checked	BD
Project No.	S11798		
Status	DA		
Plot Date	26/11/2014 4:26:46 PM		
Plot File	S:\11700-11798\11798_iglu_regentstredfermi00_main\cad\plots\... ... A07.003[A].dwg		
Drawing No.	A07.003[A]		[Revision]

Melbourne 1 Nicholson Street
Melbourne VIC 3000 Australia
T 03 8664 6200 F 03 8664 6300
email melb@batesmart.com.au
http://www.batesmart.com.au

Bates Smart Pty Ltd ABN 70 004 999 400

Sydney 43 Brisbane Street
Surry Hills NSW 2010 Australia
T 02 8354 5100 F 02 8354 5199
email syd@batesmart.com.au
http://www.batesmart.com.au

BATESSMART

PRELIMINARY
NOT FOR CONSTRUCTION

MATERIALS LEGEND

1. Aluminium cladding panel

2. Terracotta cladding panel

3. Window system (Vision glass, glass louvres & spandrel)

4. Aluminium screen

5. Expressed aluminium sunshade

6. Existing face brickwork

7. Glass louvres
8. Vision glass

9. New brickwork

A		26.11.14	Issue for DA	JH	BD
Revision	Date	Description	Initial	Checked	

Revision	Date	Description	Initial	Checked	

60-78 Regent St
Redfern
South Elevation



Check all dimensions and site conditions prior to commencement of any work, the purchase or ordering of any materials, fittings, plant, services or equipment and the preparation of shop drawings and/or the fabrication of any components.
All drawings to be read in conjunction with all architectural documents and all other consultative documents.
Do not scale drawings - refer to figured dimensions only. Any discrepancies shall immediately be referred to the architect for clarification.
All drawings may not be reproduced or distributed without prior permission from the architect.

Scale	1:400 @ A3		
Drawn	JW	Checked	BD
Project No.	S11798		
Status	DA		
Plot Date	26/11/2014 4:26:52 PM		
Plot File	S:\11700-11798\11798_iglu_regentstredfermi00_main\cad\plots\... ... A07.004[A]		
Drawing No.	A07.004[A]		[Revision]

Melbourne

1 Nicholson Street
Melbourne VIC 3000 Australia
T 03 8664 6200 F 03 8664 6300
email melb@batesmart.com.au
http://www.batesmart.com.au

Sydney

43 Brisbane Street
Surry Hills NSW 2010 Australia
T 02 8354 5100 F 02 8354 5199
email syd@batesmart.com.au
http://www.batesmart.com.au

Bates Smart Pty Ltd ABN 70 004 999 400

BATESSMART

PRELIMINARY
NOT FOR CONSTRUCTION

MATERIALS LEGEND

1. Aluminium cladding panel
2. Terracotta cladding panel
3. Window system (Vision glass, glass louvres & spandrel)
4. Aluminium screen
5. Expressed aluminium sunshade
6. Existing face brickwork
7. Glass louvres

8. Vision glass
9. New brickwork

A	26.11.14 Issue for DA	JH	BD
Revision	Date	Description	Initial Checked

Revision	Date	Description	Initial Checked

60-78 Regent St
Redfern
Section CC



Check all dimensions and site conditions prior to commencement of any work, the purchase or ordering of any materials, fittings, plant, services or equipment and the preparation of shop drawings and/or the fabrication of any components.
All drawings to be read in conjunction with all architectural documents and all other consultative documents.
Do not scale drawings - refer to figured dimensions only. Any discrepancies shall immediately be referred to the architect for clarification.
All drawings may not be reproduced or distributed without prior permission from the architect.

Scale	1:400 @ A3	
Drawn	JH	Checked BD
Project No.	S11798	
Status	DA	
Plot Date	26/11/2014 4:26:56 PM	
Plot File	S:\11700-11798\11798_iglu_regentstredfermi00_main\cad\plots\... ...DA08.003[A].dwg	
Drawing No.	A08.003[A]	

[Revision]

Melbourne 1 Nicholson Street
Melbourne VIC 3000 Australia
T 03 8664 6200 F 03 8664 6300
email melb@batesmart.com.au
http://www.batesmart.com.au

Sydney 43 Brisbane Street
Surry Hills NSW 2010 Australia
T 02 8354 5100 F 02 8354 5199
email syd@batesmart.com.au
http://www.batesmart.com.au

Bates Smart Pty Ltd ABN 70 004 999 400

BATESSMART™