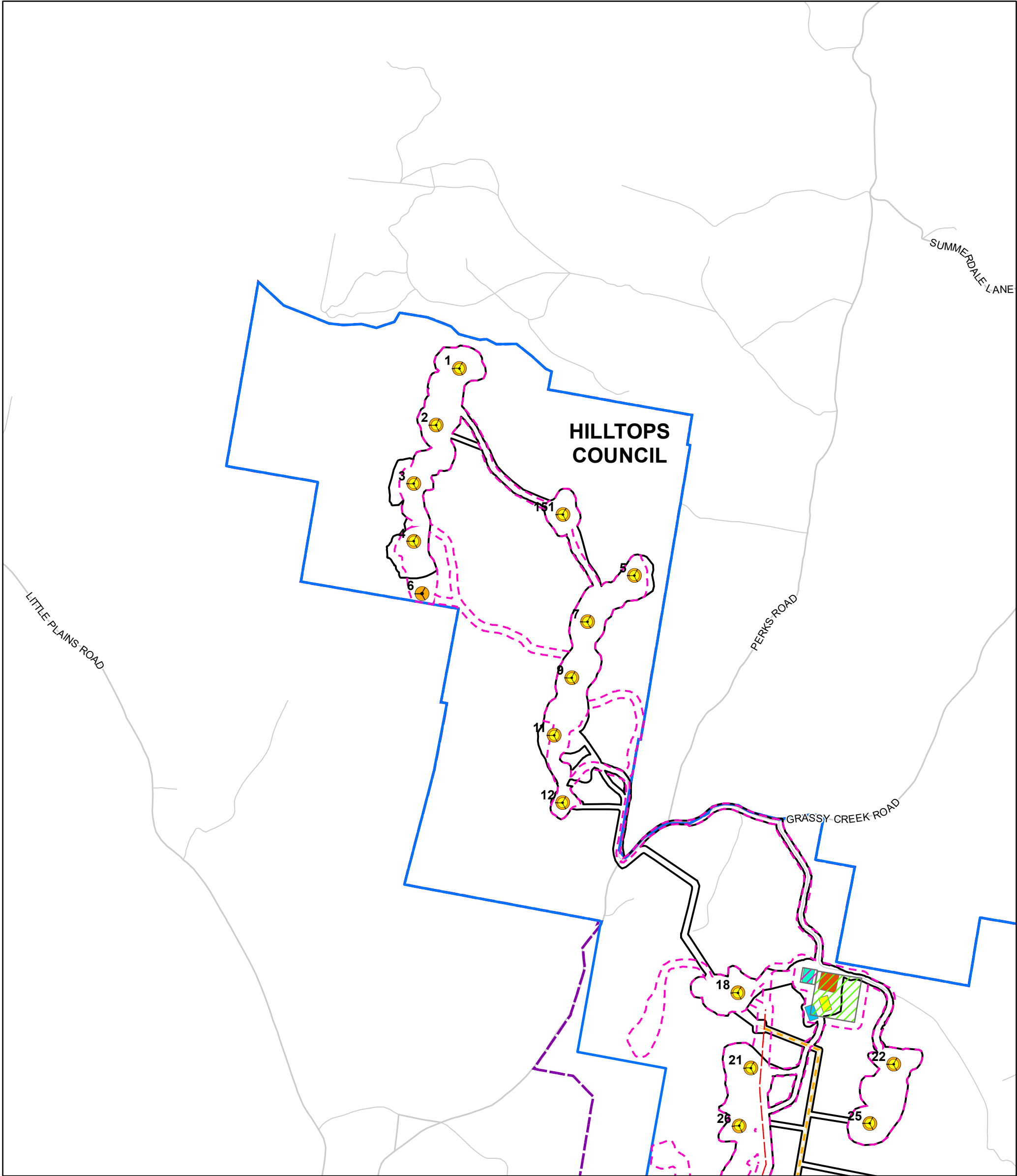


## Appendix E: Infrastructure Changes



**Modified Project**

- Modified Indicative Turbine Layout
- Revised Transmission Line (33kV)
- Revised Transmission Line (Up to 330kV)
- Transgrid Transmission Line (330kV)
- Revised Collector Substation
- Revised Connection Substation
- Revised O&M Facility
- Revised Temporary Construction Compounds
- Revised Temporary Batch Plants
- Revised Temporary Laydown Area
- Modified Development Corridor
- Modified Project Boundary

**Approved Project**

- Approved Indicative Turbine Layout
- Approved Transmission Line (33kV and 330kV)
- Approved Collector Substations
- Approved Connection Substation
- Approved O&M Facilities
- Approved Temporary Construction Compounds
- Approved Temporary Batch Plants
- Approved Project Boundary
- Approved Development Corridor
- Approved Temporary Laydown Area
- Approved Project Boundary
- Local Government Area

**Note1.** The alignment of the revised access tracks and revised underground cable is based on an optimised infrastructure layout (based on the micro-siting allowance in the Development Consent). All infrastructure is indicative only.

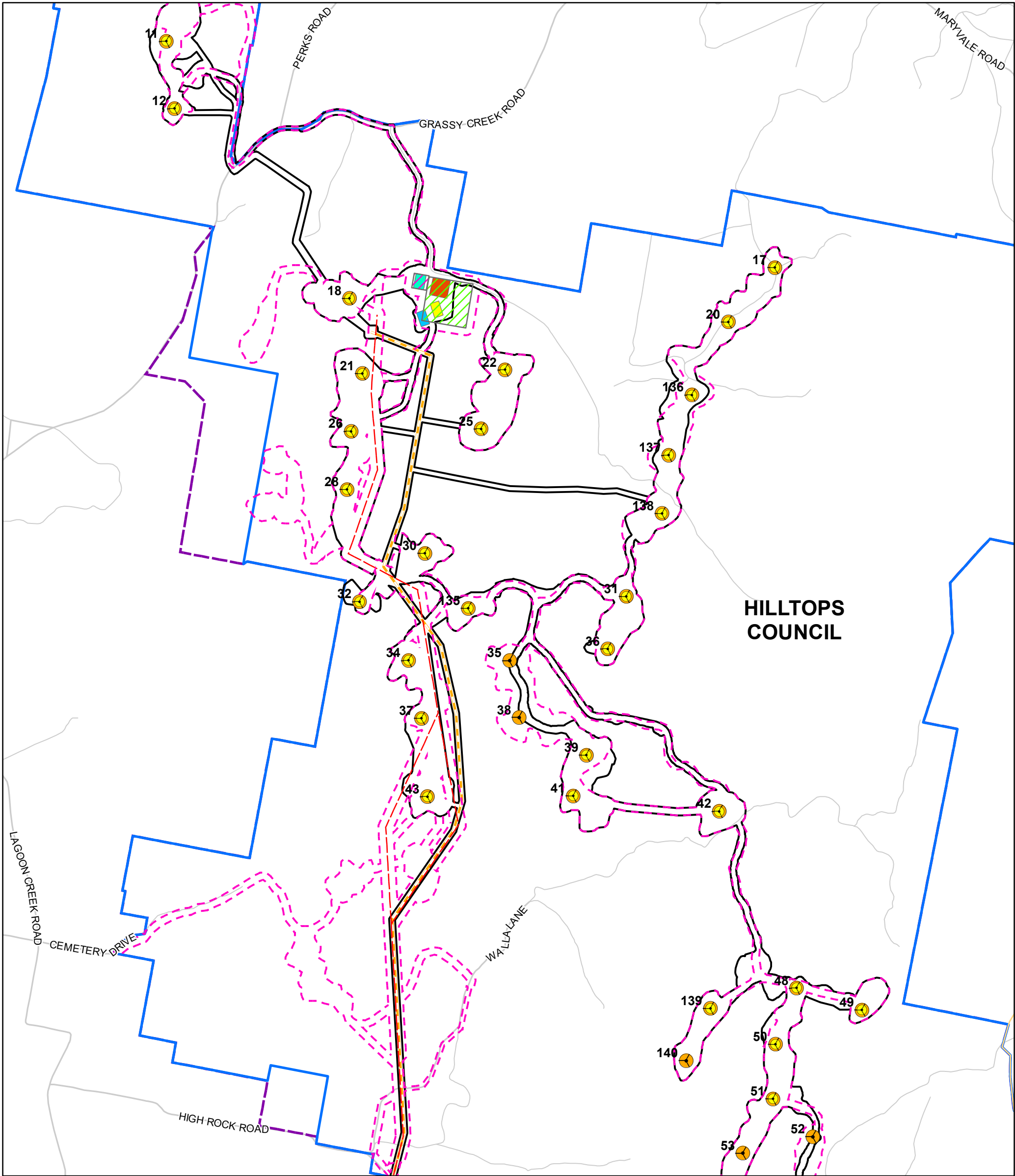
**Note2.** The development corridor includes allowance for the underground cabling and access tracks (in addition to the infrastructure shown).

**Note3.** The Project Boundary is based on publicly available cadastre and during detailed design will be updated for the actual property boundaries and road reserves.

**Date:** 31/03/2020  
**Version:** A

0 0.25 0.5  
Kilometres  
GDA 1994 MGA Zone 55  
1:25,000





**Modified Project**

- Modified Indicative Turbine Layout
- Revised Transmission Line (33kV)
- Revised Transmission Line (Up to 330kV)
- Transgrid Transmission Line (330kV)
- Revised Collector Substation
- Revised Connection Substation
- Revised O&M Facility
- Revised Temporary Construction Compounds
- Revised Temporary Batch Plants
- Revised Temporary Laydown Area
- Modified Development Corridor
- Modified Project Boundary

**Approved Project**

- Approved Indicative Turbine Layout
- Approved Transmission Line (33kV and 330kV)
- Approved Collector Substations
- Approved Connection Substation
- Approved O&M Facilities
- Approved Temporary Construction Compounds
- Approved Temporary Batch Plants
- Approved Development Corridor
- Approved Project Boundary
- Local Government Area

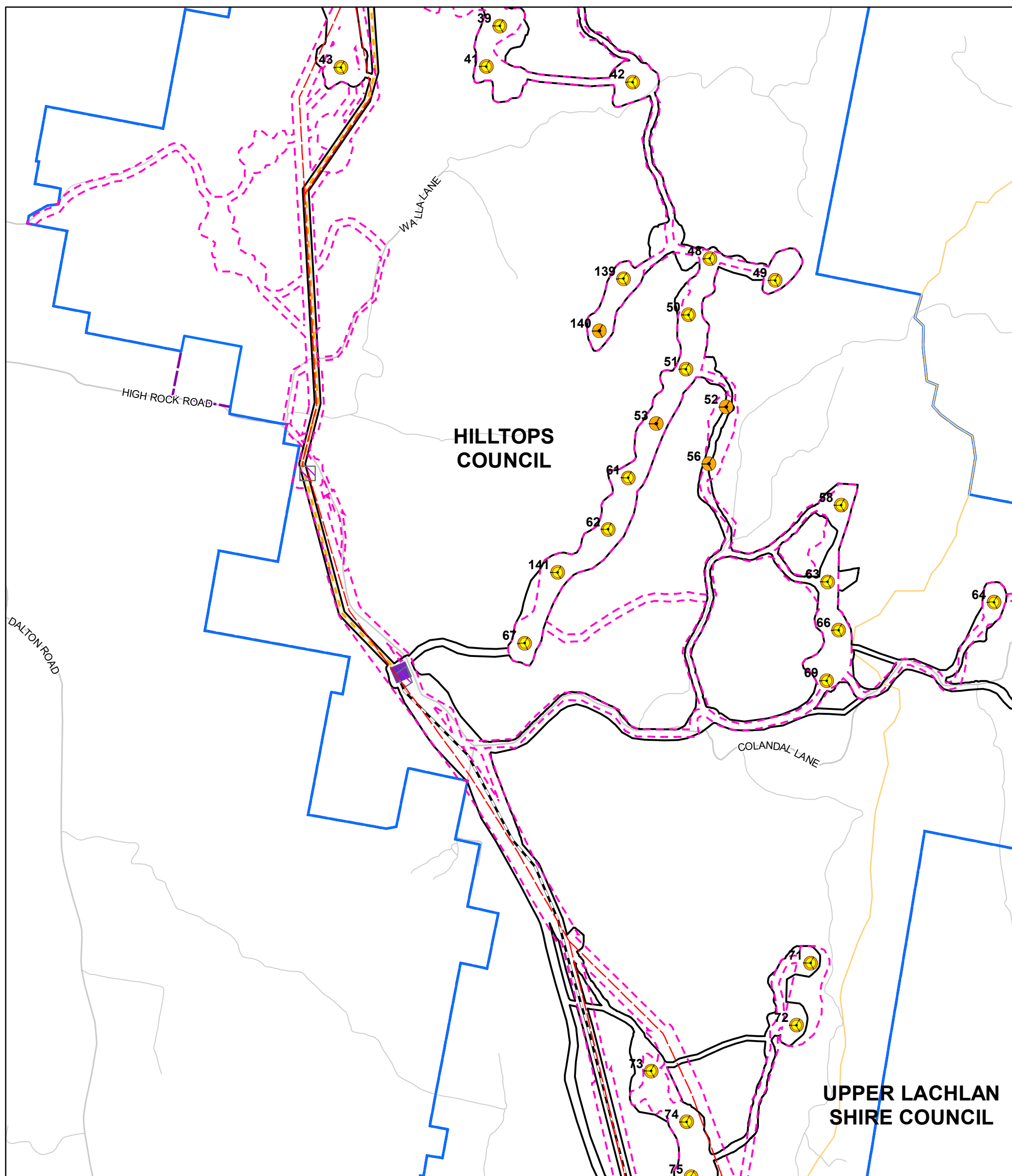
**Note1.** The alignment of the revised access tracks and revised underground cable is based on an optimised infrastructure layout (based on the micro-siting allowance in the Development Consent). All infrastructure is indicative only.

**Note2.** The development corridor includes allowance for the underground cabling and access tracks (in addition to the infrastructure shown).

**Note3.** The Project Boundary is based on publicly available cadastre and during detailed design will be updated for the actual property boundaries and road reserves.

**Date:** 31/03/2020  
**Version:** A

0 0.25 0.5  
Kilometres  
GDA 1994 MGA Zone 55  
1:25,000



Modified Project		Approved Project	
Modified Indicative Turbine Layout	Approved Indicative Turbine Layout	Approved Temporary Batch Plants	Local Government Area
Revised Transmission Line (33kV)	Approved Transmission Line (33kV and 330kV)	Approved Development Corridor	
Revised Transmission Line (Up to 330kV)	Approved Project Boundary		
Transgrid Transmission Line (330kV)	Approved Collector Substations		
Revised Collector Substation	Approved Connection Substation		
Revised Connection Substation	Approved O&M Facilities		
Revised O&M Facility	Approved Temporary Construction Compounds		
Revised Temporary Construction Compounds			
Revised Temporary Batch Plants			
Revised Temporary Laydown Area			
Modified Development Corridor			
Modified Project Boundary			

**Note1.** The alignment of the revised access tracks and revised underground cable is based on an optimised infrastructure layout (based on the micro-siting allowance in the Development Consent). All infrastructure is indicative only.

**Note2.** The development corridor includes allowance for the underground cabling and access tracks (in addition to the infrastructure shown).

**Note3.** The Project Boundary is based on publicly available cadastre and during detailed design will be updated for the actual property boundaries and road reserves.

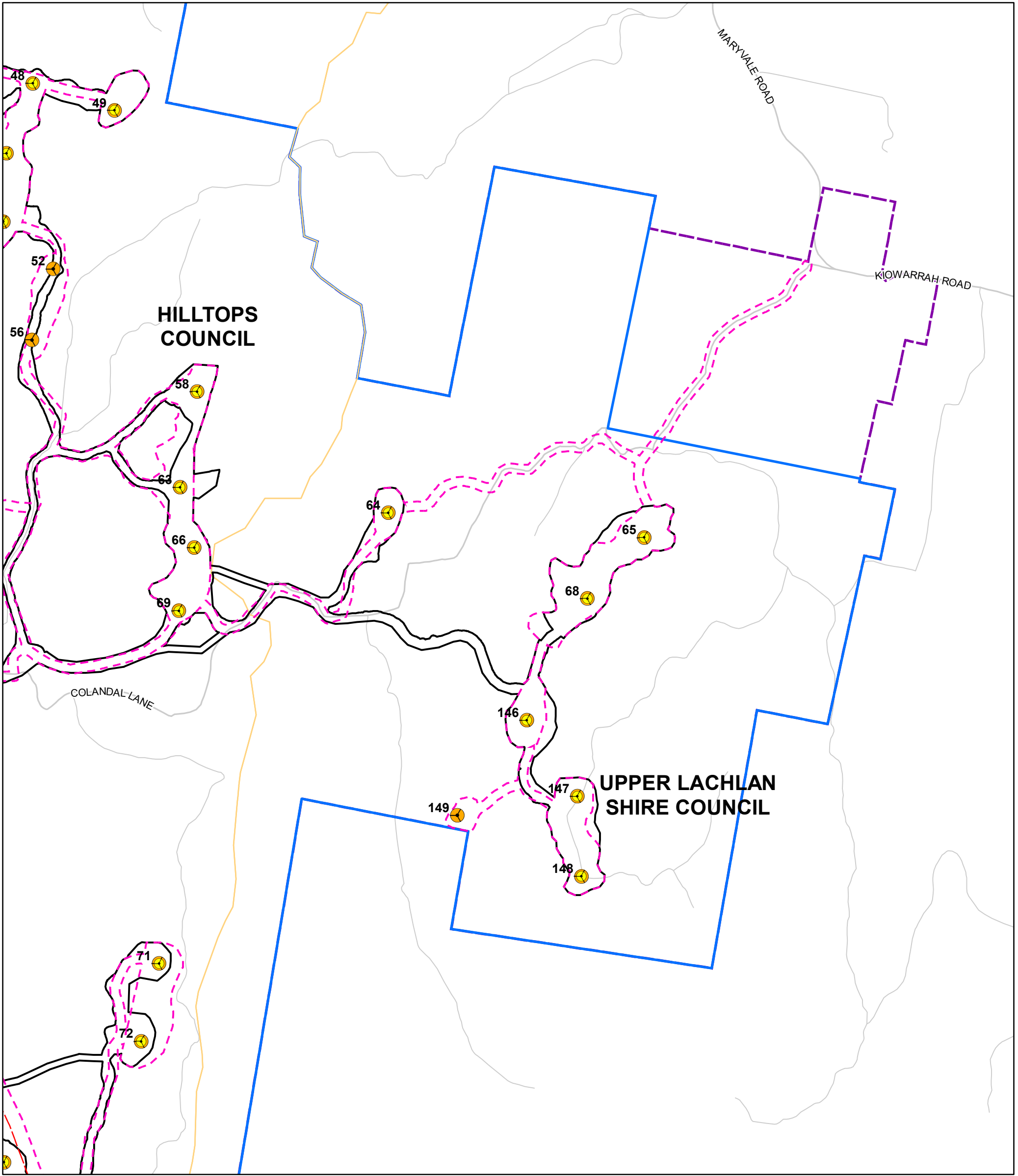
N

Date: 31/03/2020  
Version: A

0 0.25 0.5  
Kilometres

GDA 1994 MGA Zone 55  
1:25,000





**Modified Project**

- Modified Indicative Turbine Layout
- Revised Transmission Line (33kV)
- Revised Transmission Line (Up to 330kV)
- Transgrid Transmission Line (330kV)
- Revised Collector Substation
- Revised Connection Substation
- Revised O&M Facility
- Revised Temporary Construction Compounds
- Revised Temporary Batch Plants
- Revised Temporary Laydown Area
- Modified Development Corridor
- Modified Project Boundary

**Approved Project**

- Approved Indicative Turbine Layout
- Approved Transmission Line (33kV and 330kV)
- Approved Collector Substations
- Approved Connection Substation
- Approved O&M Facilities
- Approved Temporary Construction Compounds
- Approved Temporary Batch Plants
- Approved Project Boundary

**Local Government Area**

- Approved Temporary Batch Plants
- Approved Development Corridor
- Approved Project Boundary

**Note1.** The alignment of the revised access tracks and revised underground cable is based on an optimised infrastructure layout (based on the micro-siting allowance in the Development Consent). All infrastructure is indicative only.

**Note2.** The development corridor includes allowance for the underground cabling and access tracks (in addition to the infrastructure shown).

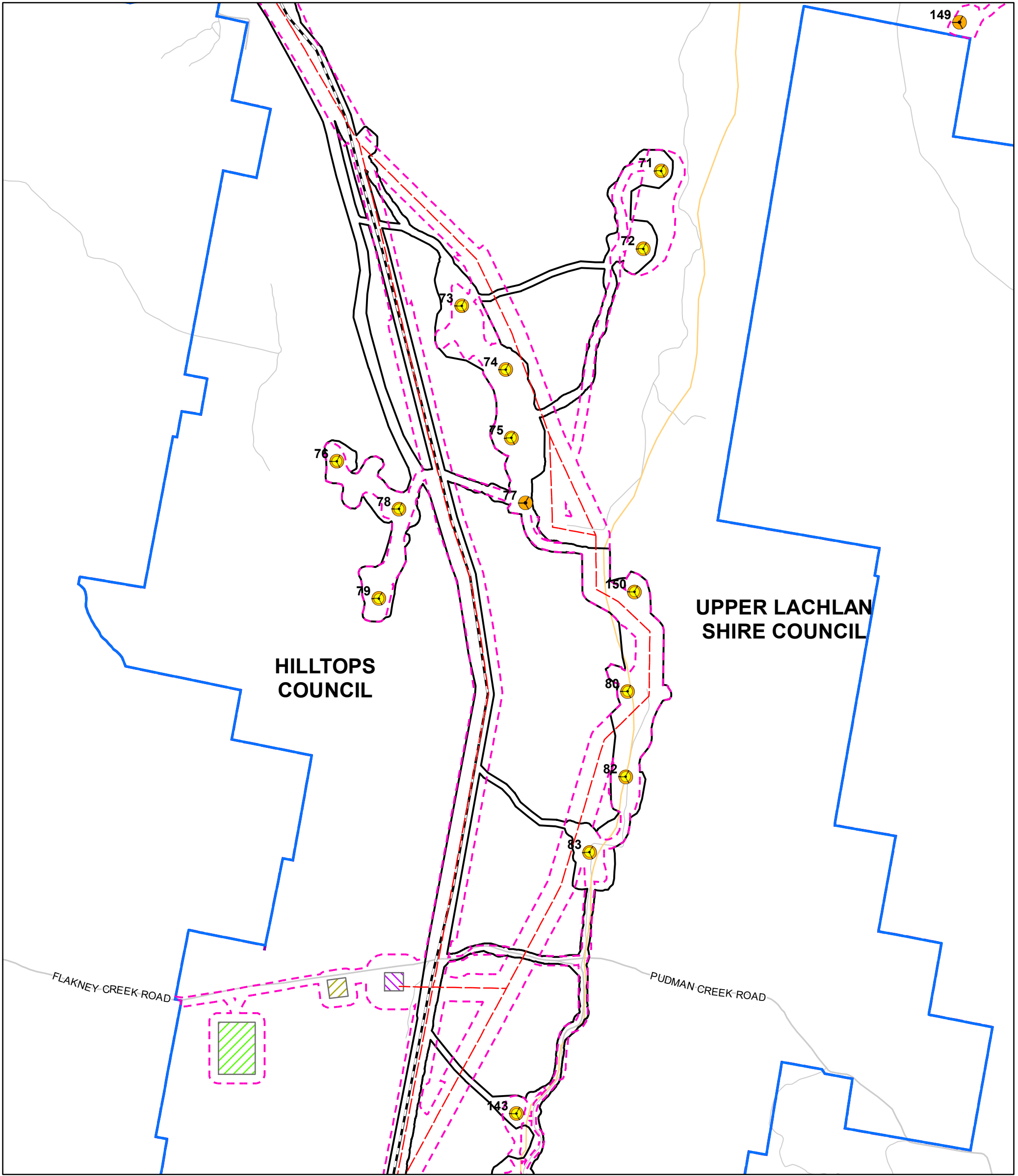
**Note3.** The Project Boundary is based on publicly available cadastre and during detailed design will be updated for the actual property boundaries and road reserves.

**Date:** 31/03/2020  
**Version:** A

0 0.25 0.5  
Kilometres  
GDA 1994 MGA Zone 55  
1:20,000

Document Path: G:\GIS\Development\_Sites\NSW\RyePark\Maps\Working\RPWF\_126\_Infrastructure Changes\_20200331.mxd





**Modified Project**

- Modified Indicative Turbine Layout
- Revised Transmission Line (33kV)
- Revised Transmission Line (Up to 330kV)
- Transgrid Transmission Line (330kV)
- Revised Collector Substation
- Revised Connection Substation
- Revised O&M Facility
- Revised Temporary Construction Compounds
- Revised Temporary Batch Plants
- Revised Temporary Laydown Area
- Modified Development Corridor
- Modified Project Boundary

**Approved Project**

- Approved Indicative Turbine Layout
- Approved Transmission Line (33kV and 330kV)
- Approved Collector Substations
- Approved Connection Substation
- Approved O&M Facilities
- Approved Temporary Construction Compounds
- Approved Temporary Batch Plants
- Approved Project Boundary
- Approved Development Corridor
- Approved Project Boundary
- Local Government Area

**Note1.** The alignment of the revised access tracks and revised underground cable is based on an optimised infrastructure layout (based on the micro-siting allowance in the Development Consent). All infrastructure is indicative only.

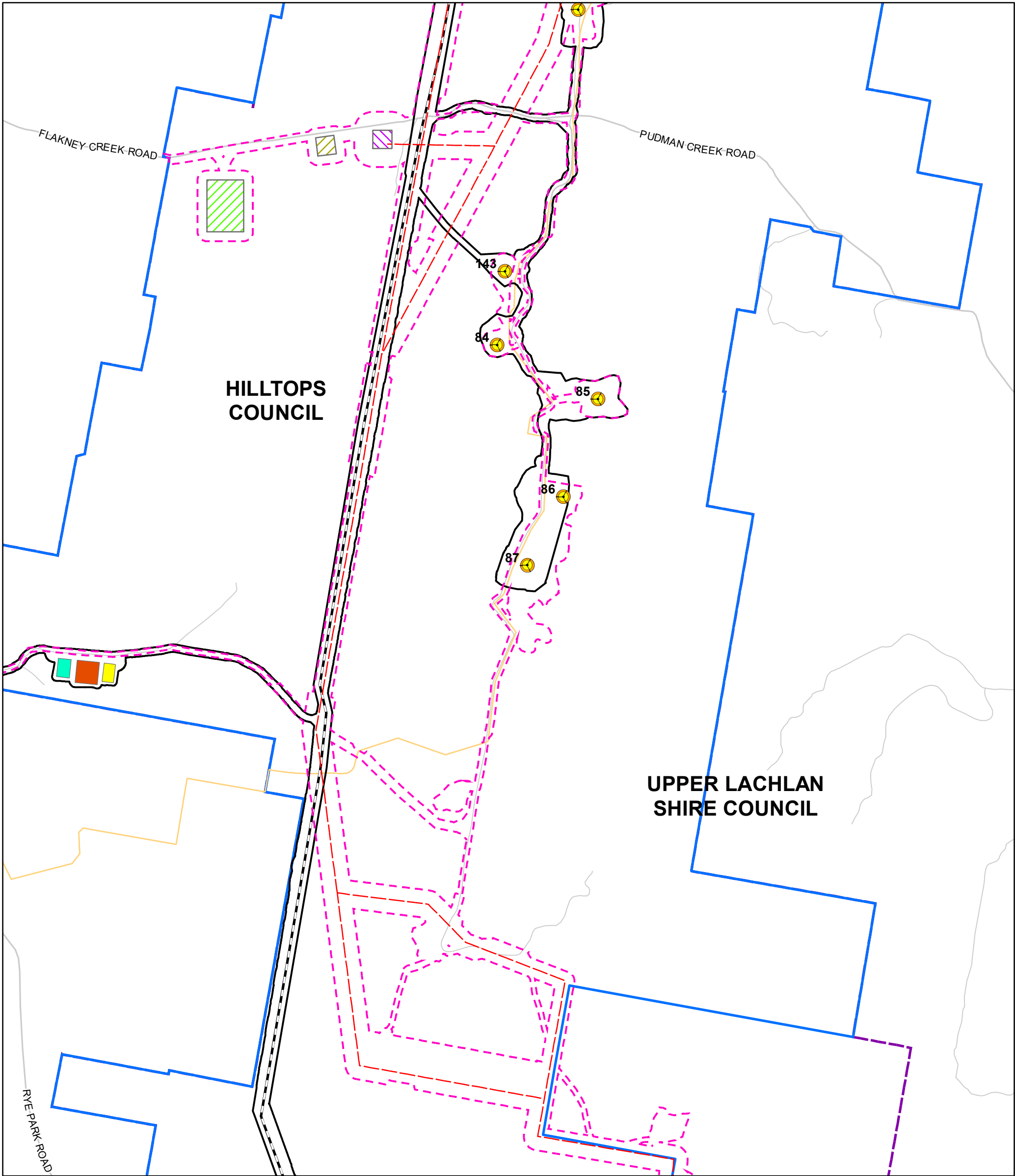
**Note2.** The development corridor includes allowance for the underground cabling and access tracks (in addition to the infrastructure shown).

**Note3.** The Project Boundary is based on publicly available cadastre and during detailed design will be updated for the actual property boundaries and road reserves.

**Date:** 31/03/2020  
**Version:** A

0 0.25 0.5  
Kilometres  
GDA 1994 MGA Zone 55  
1:20,000





**Modified Project**

- Modified Indicative Turbine Layout
- Revised Transmission Line (33kV)
- Revised Transmission Line (Up to 330kV)
- Transgrid Transmission Line (330kV)
- Revised Collector Substation
- Revised Connection Substation
- Revised O&M Facility
- Revised Temporary Construction Compounds
- Revised Temporary Batch Plants
- Revised Temporary Laydown Area
- Modified Development Corridor
- Modified Project Boundary

**Approved Project**

- Approved Indicative Turbine Layout
- Approved Transmission Line (33kV and 330kV)
- Approved Collector Substations
- Approved Connection Substation
- Approved O&M Facilities
- Approved Temporary Construction Compounds
- Approved Temporary Batch Plants
- Approved Development Corridor
- Approved Project Boundary
- Local Government Area

**Note1.** The alignment of the revised access tracks and revised underground cable is based on an optimised infrastructure layout (based on the micro-siting allowance in the Development Consent). All infrastructure is indicative only.

**Note2.** The development corridor includes allowance for the underground cabling and access tracks (in addition to the infrastructure shown).

**Note3.** The Project Boundary is based on publicly available cadastre and during detailed design will be updated for the actual property boundaries and road reserves.

North Arrow

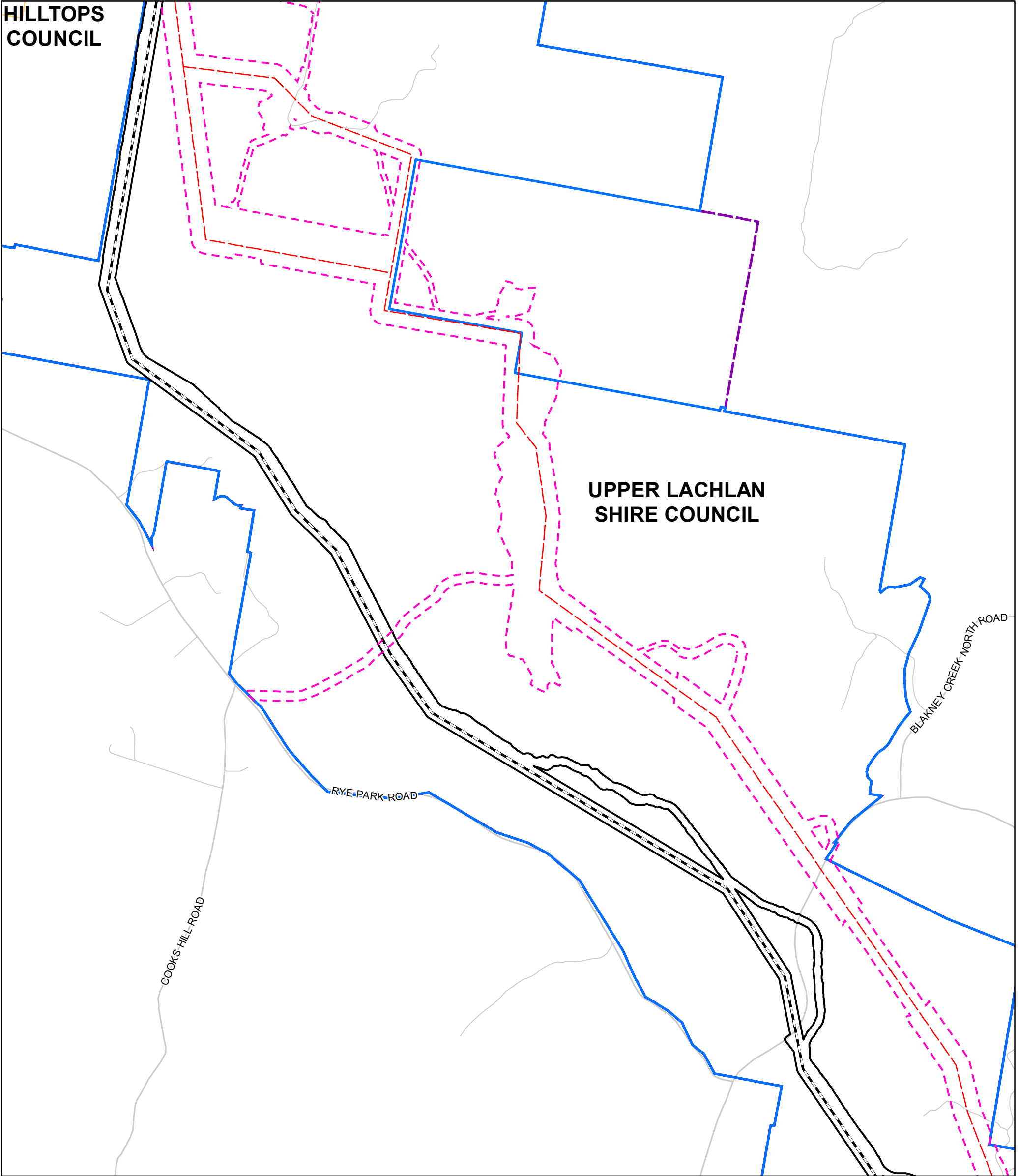
Date: 31/03/2020  
Version: A

0 0.25 0.5  
Kilometres  
GDA 1994 MGA Zone 55  
1:20,000

Document Path: G:\GIS\Development\_Sites\NSW\RyePark\Maps\Working\RPWF\_126\_Infrastructure Changes\_20200331.mxd







**Modified Project**

- Modified Indicative Turbine Layout
- Revised Transmission Line (33kV)
- Revised Transmission Line (Up to 330kV)
- Transgrid Transmission Line (330kV)
- Revised Collector Substation
- Revised Connection Substation
- Revised O&M Facility
- Revised Temporary Construction Compounds
- Revised Temporary Batch Plants
- Revised Temporary Laydown Area
- Modified Development Corridor
- Modified Project Boundary

**Approved Project**

- Approved Indicative Turbine Layout
- Approved Transmission Line (33kV and 330kV)
- Approved Collector Substations
- Approved Connection Substation
- Approved O&M Facilities
- Approved Temporary Construction Compounds
- Approved Temporary Batch Plants
- Approved Project Boundary
- Approved Development Corridor
- Approved Project Boundary
- Local Government Area

**Note1.** The alignment of the revised access tracks and revised underground cable is based on an optimised infrastructure layout (based on the micro-siting allowance in the Development Consent). All infrastructure is indicative only.

**Note2.** The development corridor includes allowance for the underground cabling and access tracks (in addition to the infrastructure shown).

**Note3.** The Project Boundary is based on publicly available cadastre and during detailed design will be updated for the actual property boundaries and road reserves.

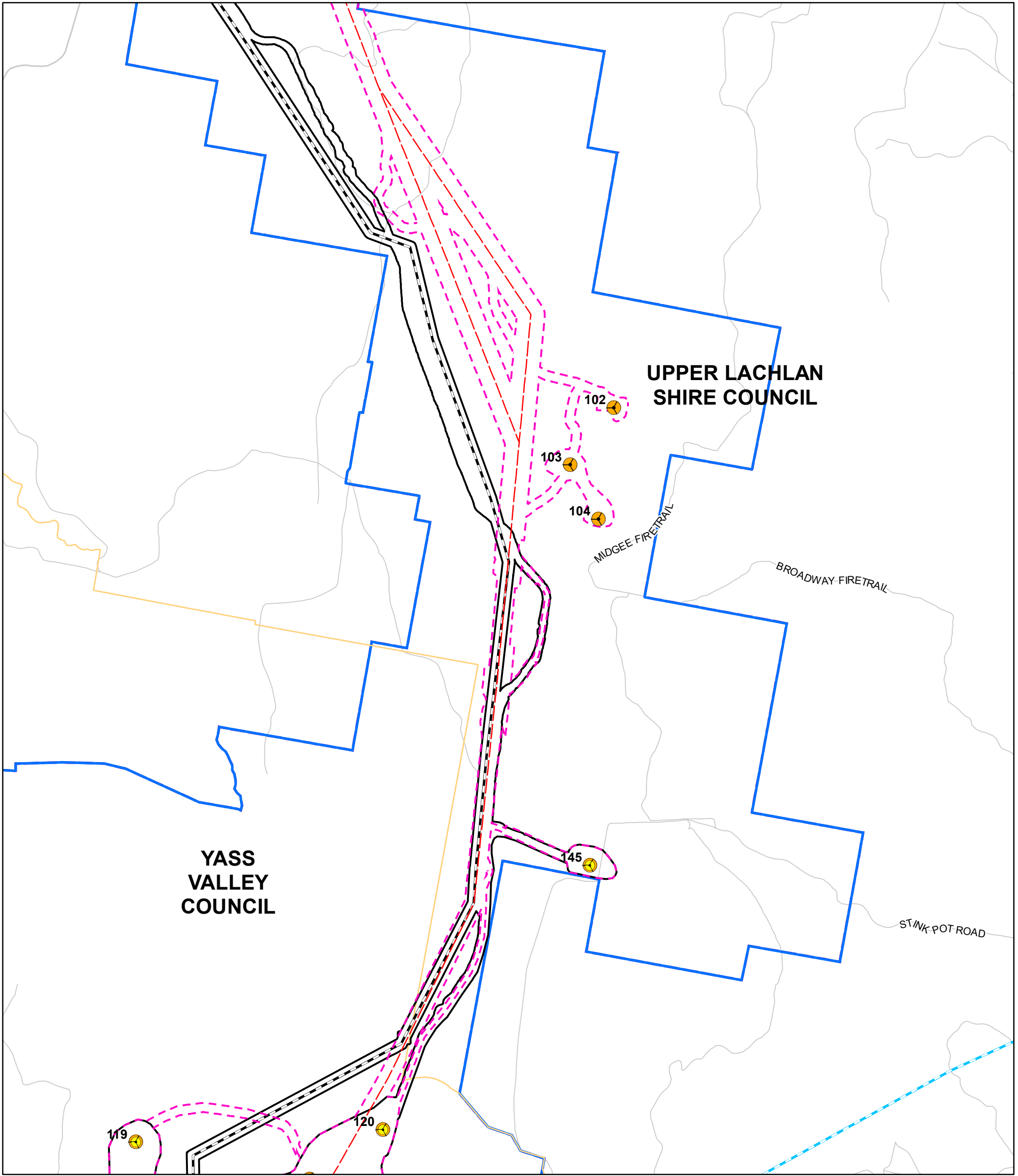
**Date:** 31/03/2020  
**Version:** A

0 0.25 0.5  
Kilometres  
GDA 1994 MGA Zone 55  
1:20,000

Document Path: G:\GIS\Development\_Sites\NSW\RyePark\Maps\Working\RPWF\_126\_Infrastructure Changes\_20200331.mxd







**Modified Project**

- Modified Indicative Turbine Layout
- Revised Transmission Line (33kV)
- Revised Transmission Line (Up to 330kV)
- Transgrid Transmission Line (330kV)
- Revised Collector Substation
- Revised Connection Substation
- Revised O&M Facility
- Revised Temporary Construction Compounds
- Revised Temporary Batch Plants
- Revised Temporary Laydown Area
- Modified Development Corridor
- Modified Project Boundary

**Approved Project**

- Approved Indicative Turbine Layout
- Approved Transmission Line (33kV and 330kV)
- Approved Collector Substations
- Approved Connection Substation
- Approved O&M Facilities
- Approved Temporary Construction Compounds
- Approved Temporary Batch Plants
- Approved Development Corridor
- Approved Project Boundary
- Local Government Area

**Note1.** The alignment of the revised access tracks and revised underground cable is based on an optimised infrastructure layout (based on the micro-siting allowance in the Development Consent). All infrastructure is indicative only.

**Note2.** The development corridor includes allowance for the underground cabling and access tracks (in addition to the infrastructure shown).

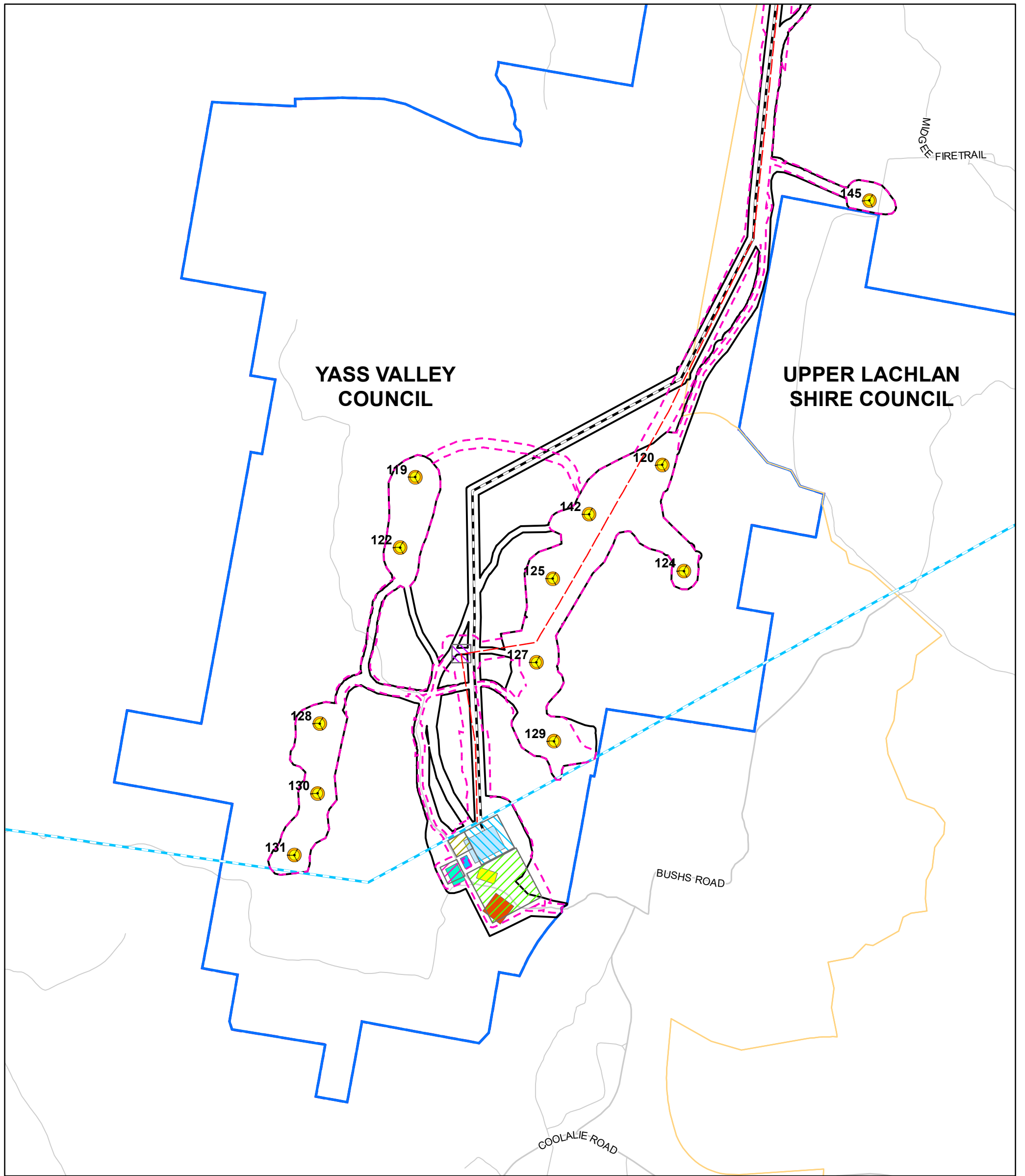
**Note3.** The Project Boundary is based on publicly available cadastre and during detailed design will be updated for the actual property boundaries and road reserves.

**Date:** 31/03/2020  
**Version:** A

0 0.25 0.5  
Kilometres  
GDA 1994 MGA Zone 55  
1:20,000

Document Path: G:\GIS\Development\_Sites\NSW\RyePark\Maps\Working\RPWF\_126\_Infrastructure Changes\_20200331.mxd





<b>Modified Project</b> <ul style="list-style-type: none"> <li>Modified Indicative Turbine Layout</li> <li>Revised Transmission Line (33kV)</li> <li>Revised Transmission Line (Up to 330kV)</li> <li>Transgrid Transmission Line (330kV)</li> <li>Revised Collector Substation</li> <li>Revised Connection Substation</li> <li>Revised O&amp;M Facility</li> <li>Revised Temporary Construction Compounds</li> <li>Revised Temporary Batch Plants</li> <li>Revised Temporary Laydown Area</li> <li>Modified Development Corridor</li> <li>Modified Project Boundary</li> </ul>	<b>Approved Project</b> <ul style="list-style-type: none"> <li>Approved Indicative Turbine Layout</li> <li>Approved Transmission Line (33kV and 330kV)</li> <li>Approved Collector Substations</li> <li>Approved Connection Substation</li> <li>Approved O&amp;M Facilities</li> <li>Approved Temporary Construction Compounds</li> <li>Approved Temporary Batch Plants</li> <li>Approved Development Corridor</li> <li>Approved Project Boundary</li> <li>Local Government Area</li> </ul>	<p><b>Note1.</b> The alignment of the revised access tracks and revised underground cable is based on an optimised infrastructure layout (based on the micro-siting allowance in the Development Consent). All infrastructure is indicative only.</p> <p><b>Note2.</b> The development corridor includes allowance for the underground cabling and access tracks (in addition to the infrastructure shown).</p> <p><b>Note3.</b> The Project Boundary is based on publicly available cadastre and during detailed design will be updated for the actual property boundaries and road reserves.</p>	<div style="text-align: center;"> <p><b>Date: 31/03/2020</b> <b>Version: A</b></p> </div> <div style="text-align: center;"> <p>GDA 1994 MGA Zone 55 1:20,000</p> </div>	
---	---	--	---	--