

Environmental Impact Statement
Uungula Wind Farm

Appendix Q: Community Newsletters and Print Media

May 2020

MEDIA RELEASE

Date: 19 April 2011



Proposed New Development - Uungula Wind Farm

Wind Prospect CWP has commenced with early stages of development of a second wind farm in the Mudgee area. A Preliminary Environmental Assessments (PEA) has been submitted to the NSW Department of Planning for Uungula Wind Farm, located midway between Wellington, Gulgong and Mudgee, north of Lake Burrandong. This announcement follows the proposed Crudine Ridge Wind Farm, located approximately 40 km south of Mudgee made earlier in the year.

"Wind Prospect CWP is pleased to announce that the development phase of this wind farm is now underway. Our early announcement of this project is to ensure we engage thoroughly with the community and I welcome the opportunity to discuss the proposal with broader stakeholders" said Ed Mounsey, Head of Development, Wind Prospect CWP Pty Ltd.

The proposed Uungula Wind Farm could comprise upward of 300 turbines depending on final selection. Current wind turbine technologies vary in geometry and it is therefore difficult to provide exact details at this early stage of the development. "Our approach to assessing the impact of the wind farm will be based on greatest number and largest size of turbine (i.e. most impact). This ensures that, post consent, we have

the flexibility to choose the most suitable wind turbine available in the market at that time,” said Mr. Mounsey.

Currently towers ranging from 80 to 100 metres and individual blade lengths from 40 up to 60 m are available, giving a potential height to blade tip of 160 m. These machines provide for a range of generation capacities from 1.5 to 3.4 megawatts (MW).

“In the coming weeks we will be establishing a project website for the project www.uungulawindfarm.com.au whereby interested stakeholders can learn more about Wind Prospect CWP, the proposed wind farm and typical stages in the development process. Each website will be maintained throughout the duration of the project with key events, milestones and newsletters uploaded as the proposal develops. Importantly, we also have a ‘Have Your Say’ space on the website for community members to put their opinion across” Mr. Mounsey concluded.

A copy of the Preliminary Environmental Assessment will be uploaded to the website, and will also be available to view on the NSW Department of Planning’s website (www.majorprojects.planning.nsw.gov.au) listed under the wind farm name.

For further information, please contact Ed Mounsey, Head of Development for Wind Prospect CWP, on 02 4013 4640.

Wind Prospect CWP Pty Ltd is a joint venture between Wind Prospect Group (WP) and Continental Wind Partners (CWP), both international wind farm development companies. The joint venture combines the strengths of the two groups that undertake all aspects of wind energy development, including design, construction and operation of wind farms across 11 countries. With over 18 years of successful development within the industry, Wind Prospect has been involved in the successful delivery of 2,500 MW, including onshore and offshore projects. The company's civil, electrical and mechanical engineers have been involved in the commissioning of over 50 wind farms around the world. Continental Wind Partners has developed and is now building the largest wind farm in Europe, the 600MW Fantanele project. To date \$1.5billion has been invested in this project alone.

Wind Prospect CWP's office in Newcastle manages the NSW portfolio of 3,200 MW of wind farm developments which include the Boco Rock project. Boco Rock follows the successes of the groups 12 Australian wind farms which have been approved over the last 8 years (Table 1).

Wind Farm	State	Turbines	Total MW	Status
Hallett I (Brown Hill)	SA	45	94.5	Operating
Snowtown (Stage 1)	SA	47	98.7	Operating
Canunda	SA	23	46	Operating
Mt Millar	SA	35	70	Operating
Hallett II (Hallett Hill)	SA	34	71.4	Operating
Hallett IV (North Brown Hill)	SA	63	132.3	Under Construction
Hallett V (The Bluff Range)	SA	25	52.5	Under Construction
Snowtown (Stage 2)	SA	83	166	Approved
Willogeleche Hill	SA	26	52	Approved
Troubridge Point	SA	15	30	Approved
Boco Rock	NSW	122	260	Approved
Sapphire	NSW	159	325	Near Submission
Totals		677	1,398.4 MW	

Table 1 – Wind Prospect's Australian Wind Farm Developments To Date

ENDS

Media Outlets

Mudgee Guardian and Gulgong Advertiser	02 6372 1455	PO Box 255, Mudgee NSW 2850
		darren.snyder@ruralpress.com
The Western Advocate	02 6331 2611	PO Box 11, Bathurst NSW 2795
		mail.westernadvocate@ruralpress.com
Radio 2MG, Mudgee	02 6372 1777	PO Box 17, Mudgee NSW 2850
		news@2MG.com.au
ABC Central West	02 6393 2511	PO Box 8549, East Orange NSW 2800
		news.westnsw@abc.net.au
Newcastle Herald		ngoffet@theherald.com.au

MEDIA RELEASE

Date: 28 September 2011



Wind Farm Consultation

The proposed Uungula Wind Farm is located north of Lake Burrandong, New South Wales, midway between Wellington, Gulgong and Mudgee and could accommodate upward of 300 wind turbines - enough to produce approximately 1,500 gigawatt hours (GWh) annually of clean, renewable energy, capable of supply approximately 240,000 average homes across Australia.

Our current efforts are concentrated towards delivering initial wind farm layouts whilst evaluating a range of grid connection routes. This process, to date, has been greatly aided by feedback through our website and through direct approaches from local landowners via the contact details provided on our project website (www.uungulawindfarm.com.au). Once the initial site design options have been explored and internally tested, we will hold a Public Open Day, similar to the one held for the Crudine Ridge Wind Farm in July this year, to further encourage feedback. Notifications of this Public Open Day will be made via a Project Newsletter that will be distributed throughout the local community in addition to local newspaper adverts and likely radio interviews.

The Public Open Day will take the form of large scale displays, including maps of the initial wind farm layouts, photomontages of the proposed project from a range of

locations, and other information relating to what has been done to date and what is still to be done. A number of Wind Prospect CWP staff members will also be on hand to liaise with and answer questions.

The proposed Crudine Ridge Wind Farm is located south of Pyramul, New South Wales, midway between Mudgee and Bathurst and could accommodate up to 106 wind turbines - enough to produce approximately 560 gigawatt hours (GWh) annually of clean, renewable energy, capable of supply approximately 80,000 average homes across Australia.

Feedback from the initial Crudine Ridge Wind Farm Public Open Day was overwhelmingly positive, and in line with the responses we received to our earlier Public Opinion Survey. This feedback encouraged us to progress the project, and as such onsite surveys will conclude later this year, following which we will hold a second Public Open Day. Again, notifications of this Public Open Day will be made via a Project Newsletter that will be distributed throughout the local community in addition to local newspaper adverts and likely radio interviews.

As mentioned previously, we encourage feedback from the local community at all stages of the development process. Should any of your readers wish to make contact about either proposal, they can do so by contacting Ed Mounsey, Head of Development for Wind Prospect CWP on 02 4013 4640, or ed.mounsey@wpcwp.com.au, or PO Box 1708, Newcastle, NSW, 2300.

Wind Prospect CWP Pty Ltd is a joint venture between Wind Prospect Group (WP) and Continental Wind Partners, both international wind farm development companies. The joint venture combines the strengths of the two groups that undertake all aspects of wind energy development, including design, construction and operation of wind farms across 11 countries. With over 18 years of successful development within the industry, Wind Prospect has been involved in the successful delivery of 2,500 MW, including onshore and offshore projects. The company's civil, electrical and mechanical engineers have been involved in the commissioning of over 50 wind farms around the world. Continental Wind Partners has developed and is now building the largest wind farm in Europe, the 600MW Fantanele project. To date \$1.5billion has been invested in this project alone.

Wind Prospect CWP's offices in Newcastle manage the, NSW portfolio of 3,200 MW of wind farm developments which include the Boco Rock project. Boco Rock follows the successes of the groups other Australian wind farms approved over the last 8 years in Australia (Table 1).

Wind Farm	State	Turbines	Total MW	Status
Hallett I (Brown Hill)	SA	45	94.5	Operating
Snowtown (Stage 1)	SA	47	98.7	Operating
Canunda	SA	23	46	Operating
Mt Millar	SA	35	70	Operating
Hallett II (Hallett Hill)	SA	34	71.4	Operating
Hallett IV (North Brown Hill)	SA	63	132.3	Under Construction
Hallett V (The Bluff Range)	SA	25	52.5	Under Construction
Snowtown (Stage 2)	SA	83	166	Approved
Willogeleche Hill	SA	26	52	Approved
Troubridge Point	SA	15	30	Approved
Boco Rock	NSW	122	260	Approved
Sapphire	NSW	159	325	Near Submission
Totals		677	1,398.4 MW	

Table 1 – Wind Prospect Wind Farm Developments To Date

ENDS

Media Outlets

Mudgee Guardian	02 6372 1455	PO Box 255, Mudgee NSW 2850
		robyn.murray@ruralpress.com
Wellington Times	02 6845 2755	PO Box 42, Wellington NSW 2820
		editor.welltimes@ruralpress.com



Uungula Wind Farm

December 2011

Public Opinion Survey

We would be pleased if you could spare a little time to answer the following questions and return the form. Your feedback is useful to us in making sure we have thoroughly identified local community concerns. We feed this information back into the project and thereby allow for the best possible wind farm proposal to be submitted.

How close do you live to the proposed wind farm?

0 - 5km ☐

5 - 15km ☐

Over 15km ☐

Do you approve of wind being used to generate renewable electricity?

Yes ☐

No ☐

No view ☐

On hearing of our proposal, what was your initial view?

I support it ☐

I don't support it ☐

Undecided ☐

What do you see as the main benefits of the proposed project?

.....
.....
.....

What are your main concerns about the proposed project?

.....
.....
.....

Do you have any other comments about the proposed project?

.....
.....
.....

If you would like to receive further information about Uungula Wind Farm, please let us know. Any details you provide will be held in the strictest confidence and used only to update you on the project.

Preferred method of contact:

Post ☐

Email ☐

Project website ☐

Name:
Address:
Email:
Phone:

Please post/fax/email your completed copy of the Public Opinion Survey to the details below:

Post: Wind Prospect CWP Pty Ltd, PO Box 1708, Newcastle, NSW, 2300 Fax: 02 4926 2154

Email: ed.mounsey@wpcwp.com.au / sam.wilderbeek@wpcwp.com.au

Web: www.uungulawindfarm.com.au

MEDIA RELEASE

Date: December 2011



Uungula Wind Farm Project Update

The proposed Uungula Wind Farm is located between Mudgee, Gulgong and Wellington, New South Wales. The project could accommodate approximately 330 wind turbines - enough to produce in the order of 2,600 gigawatt hours (GWh) annually of clean, renewable energy; capable of supplying 350,000 average Australian homes.

Since the Preliminary Environmental Assessment was submitted in March 2011, Wind Prospect CWP have been conducting desktop studies and have engaged in initial stakeholder consultation. As a result of this process, the envelope of the wind farm has been redefined. A section of the project north of the Yarrabin Road has been removed from consideration, although a potential expansion to the project north of the existing envelope is being investigated. For an updated map of the project envelope, please refer to the website www.uungulawindfarm.com.au

Wind Prospect CWP would appreciate your feedback and encourage members of the community to complete our Public Opinion Survey which can be accessed through the website. Alternately, you can contact us directly 02 4013 4640 if you wish to have a Public Opinion Survey mailed to you.

A Public Open Day will be held in early 2012 to provide further information about the project and the assessment requirements which will shape the wind farm. At the Public Open Day, Wind Prospect CWP's development team will be on hand to discuss and answer questions about the Uungula Wind Farm.

If you require additional information or would like to discuss the project further, please contact Ed Mounsey on 02 4013 4640.

Wind Prospect CWP Pty Ltd is a joint venture between Wind Prospect Group (WP) and Continental Wind Partners, both international wind farm development companies. The joint venture combines the strengths of the two groups that undertake all aspects of wind energy development, including design, construction and operation of wind farms across 11 countries. With over 18 years of successful development within the industry, Wind Prospect has been involved in the successful delivery of 2,500 MW, including onshore and offshore projects. The company's civil, electrical and mechanical engineers have been involved in the commissioning of over 50 wind farms around the world. Continental Wind Partners has developed and is now building the largest wind farm in Europe, the 600MW Fantanele project. To date \$1.5billion has been invested in this project alone.

Wind Prospect CWP's offices in Newcastle manage the, NSW portfolio of 3,200 MW of wind farm developments which include the Boco Rock project. Boco Rock follows the successes of the groups 12 Australian wind farms approved over the last 8 years in Australia (Table 1).

Wind Farm	State	Turbines	Total MW	Status
Hallett I (Brown Hill)	SA	45	94.5	Operating
Snowtown (Stage 1)	SA	47	98.7	Operating
Canunda	SA	23	46	Operating
Mt Millar	SA	35	70	Operating
Hallett II (Hallett Hill)	SA	34	71.4	Operating
Hallett IV (North Brown Hill)	SA	63	132.3	Under Construction
Hallett V (The Bluff Range)	SA	25	52.5	Under Construction
Snowtown (Stage 2)	SA	83	166	Approved
Willogoleche Hill	SA	26	52	Approved
Troubridge Point	SA	15	30	Approved
Boco Rock	NSW	122	260	Approved
Sapphire	NSW	159	325	Under Assessment
Totals		677	1,398.4 MW	

Table 1 – Wind Prospect Wind Farm Developments To Date

ENDS

Media Outlets

Mudgee Guardian and Gulgong Advertiser	02 6372 1455	PO Box 255, Mudgee NSW 2850
		mail.mguardian@ruralpress.com
The Western Advocate	02 6331 2611	PO Box 11, Bathurst NSW 2795
		mail.westernadvocate@ruralpress.com
Radio 2MG, Mudgee	02 6372 1777	PO Box 17, Mudgee NSW 2850
		news@2mMG.com.au
ABC Central West	02 6393 2511	PO Box 8549, East Orange NSW 2800
		news.westnsw@abc.net.au
Prime Television	02 6881 1777	Catalina.Florez@prime7.com.au
Wellington Times	02 6845 2755	editor.welltimes@ruralpress.com
Newcastle Herald		ngoffet@theherald.com.au

MEDIA RELEASE

Date: December 2011



Wind Prospect CWP still forging ahead with Uungula Wind Farm

Wind Prospect CWP remains committed to developing the Uungula Wind Farm between Mudgee, Gulgong and Wellington. Wind Prospect CWP is continuing to conduct site studies and community consultation for the project. Should the site remain feasible, a submission will be made to the Department of Planning and Infrastructure in due course. The project has, however, been modified after initial stakeholder consultation and feasibility studies. Modifying and redefining a project is a normal part of the process when developing a wind farm in its early stages.

Wind Prospect CWP looks forward to continuing its work on the site and engaging further with the local community as the project takes shape. Visit the Uungula Wind Farm website at www.uungulawindfarm.com.au to find out more about the project and to Have Your Say.

Wind Prospect CWP Pty Ltd is a joint venture between Wind Prospect Group (WP) and Continental Wind Partners, both international wind farm development companies. The joint venture combines the strengths of the two groups that undertake all aspects of wind energy development, including design, construction and operation of wind farms across 11 countries. With over 18 years of successful development within the industry, Wind Prospect has been involved in the successful delivery of 2,500 MW, including onshore and offshore projects. The company's civil, electrical and mechanical engineers have been involved in the commissioning of over 50 wind farms around the world. Continental Wind Partners has developed and is now building the largest wind farm in Europe, the 600MW Fantanele project. To date \$1.5billion has been invested in this project alone.

Wind Prospect CWP's offices in Newcastle manage the, NSW portfolio of 3,200 MW of wind farm developments which include the Boco Rock project. Boco Rock follows the successes of the groups 12 Australian wind farms approved over the last 8 years in Australia (Table 1).

Wind Farm	State	Turbines	Total MW	Status
Hallett I (Brown Hill)	SA	45	94.5	Operating
Snowtown (Stage 1)	SA	47	98.7	Operating
Canunda	SA	23	46	Operating
Mt Millar	SA	35	70	Operating
Hallett II (Hallett Hill)	SA	34	71.4	Operating
Hallett IV (North Brown Hill)	SA	63	132.3	Under Construction
Hallett V (The Bluff Range)	SA	25	52.5	Under Construction
Snowtown (Stage 2)	SA	83	166	Approved
Willogoleche Hill	SA	26	52	Approved
Troubridge Point	SA	15	30	Approved
Boco Rock	NSW	122	260	Approved
Sapphire	NSW	159	325	Under Assessment
Totals		677	1,398.4 MW	

Table 1 – Wind Prospect Wind Farm Developments To Date

ENDS

Media Outlets

Mudgee Guardian and Gulgong Advertiser	02 6372 1455	PO Box 255, Mudgee NSW 2850
		mail.mguardian@ruralpress.com
The Western Advocate	02 6331 2611	PO Box 11, Bathurst NSW 2795
		mail.westernadvocate@ruralpress.com
Radio 2MG, Mudgee	02 6372 1777	PO Box 17, Mudgee NSW 2850
		news@2mMG.com.au
ABC Central West	02 6393 2511	PO Box 8549, East Orange NSW 2800
		news.westnsw@abc.net.au
Prime Television	02 6881 1777	shannon.marshall-mccormack@prime7.com.au
Wellington Times	02 6845 2755	editor.welltimes@ruralpress.com
Newcastle Herald		ngoffet@theherald.com.au



Wind Farm Open Days

Wind Prospect CWP Pty Ltd will be holding two Public Open Days in February one for each of its proposed wind farm projects in the region.

Crudine Ridge Wind Farm

Public Open Day #2 will be held on the Tuesday, 28th February at Pyramul Hall, from 2.30 to 7.00pm.

The proposed wind farm is located south of Pyramul, midway between Mudgee and Bathurst and could accommodate up to 106 wind turbines - enough to produce approximately 560 gigawatt hours (GWh) annually of clean, renewable energy, capable of supplying approximately 80,000 average homes across Australia.

Uungula Wind Farm

Public Open Day #1 will be held on the Wednesday, 29th February at Goolma Community Hall, from 2.30 to 7.00pm.

The proposed Uungula Wind Farm is located between Wellington, Gulgong and Mudgee, north of Lake Burrendong and could accommodate over 250 wind turbines - enough to produce approximately 1,320 gigawatt hours (GWh) annually of clean, renewable energy, capable of supplying approximately 190,000 average homes across Australia.

Each Public Open Day will take the form of large scale displays, including maps of the respective wind farm layouts, photomontages of the respective project from a range of locations, and other information relating to what has been done to date and what is still to be done. A number of Wind Prospect CWP staff members will also be on hand to liaise with and answer questions.

Have your say at www.crudineridgewindfarm.com.au
www.uungulawindfarm.com.au

Public Open Day #1 - 29th February, Goolma Hall, 2.30 - 7.00pm

Wind Prospect CWP Pty Ltd will be holding a Public Open Day for the proposed Uungula Wind Farm on Wednesday, 29th of February at Goolma Hall, from 2.30 to 7.00pm.

The proposed wind farm is located between Wellington, Gulgong and Mudgee, north of Lake Burrendong, New South Wales and could accommodate over 250 wind turbines - enough to produce approximately 1,320 gigawatt hours (GWh) annually of clean, renewable energy, capable of supplying approximately 190,000 average homes across Australia.

The Public Open Day will take the form of large scale displays, including a map of the proposed wind farm area, photomontages of the proposed project from a range of locations, and other information relating to what has been done to date and what is still to be done. A number of Wind Prospect CWP staff members will also be on hand to liaise with and answer questions.

Over the next 12 months we will continue talking with the local community and interested stakeholders to receive input into the proposal, at the same time as engaging consultants to undertake and complete detailed investigations. There will be displays at the Public Open Day on each of the following studies to be completed during this time frame:

- Aviation and Communication
- Ecology and Cultural Heritage
- Economic Benefits
- Landscape and Visual Impact Assessment
- Land Values
- Noise Assessment
- Transport
- Fire and Safety
- Health



DRAFT NSW PLANNING GUIDELINES FOR WIND FARMS

The NSW Government recently published Draft Planning Guidelines for Wind Farms (Draft Guidelines) on the 23rd December 2011. The Draft Guidelines are currently on Public Exhibition until the 14th March 2012 and are therefore open to public comment.

One of the proposals put forward in the Draft Guidelines is for wind farm proponents to establish a Community Consultation Committee (CCC). The purpose of a CCC would be to provide a forum for open discussion between Wind Prospect CWP, the community, Local Government and other stakeholders. In particular, the CCC would provide a forum to:

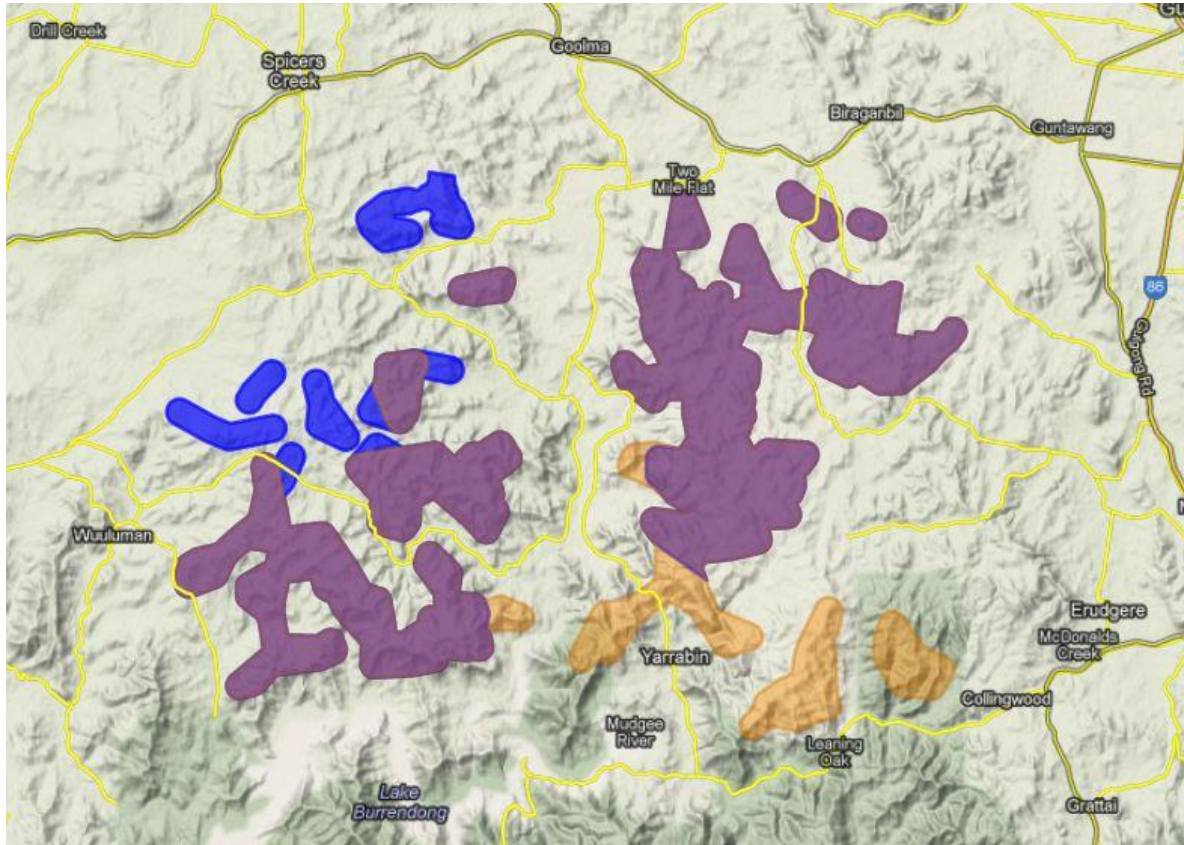
- Establish good working relationships between the proponent and the community;
- Provide for ongoing communication and information dissemination;
- Discuss community concerns and resolutions; and
- Advise on the allocation of Community Enhancement Funds.

In preparing for the Draft Guidelines being incorporated, Wind Prospect CWP would like to seek nominations from interested community representatives and other stakeholders who would be willing to sit on the CCC. Nomination forms will be made available at the Public Open Day or through contacting us directly via the details provided. Nominations will close 30th April 2012.

UUNGULA WIND FARM

Since the Ungula Wind Farm application was made in March 2011, we have modified the proposed envelope as displayed in Newsletter #1. This change followed ever improving technical data and significant community consultation that occurred in November through to January. As a result the project has reduced in size from approximately 330 to over 250 wind turbines.

Map showing the location of the proposed Ungula Wind Farm (existing area is purple, newly identified area is blue and removed area is orange) in relation to nearby localities.



Current available wind turbines for the Ungula Wind Farm have rated capacities between 1.5 to 4.5 MW and comprise a three bladed design mounted on top of a steel tower. Blade lengths range from 40m to greater than 60m with tower heights ranging from 70m to over 100m. We do not yet know which wind turbine model will be best suited for the Ungula Wind Farm, however to ensure we address the greatest potential impact, our assessments will be undertaken with regard to the largest available wind turbines.

The wind farm would also consist of access tracks, overhead and underground electrical cabling, substations, permanent storage compounds, wind measuring masts plus temporary facilities during the construction phase. An external power line would also be required to connect to the nearby transmission network.

USEFUL WEBSITES

- Ungula Wind Farm: www.uungulawindfarm.com.au
- Wind Prospect: www.windprospect.com
- Continental Wind Partners: www.continentalwind.com
- Clean Energy Council: www.cleanenergycouncil.org.au
- BioBanking: www.environment.nsw.gov.au/biobanking



Please post/email/fax your comments to us via:
Post: Wind Prospect CWP Pty Ltd, PO Box 1708, Newcastle, NSW 2300
Fax: 02 4926 2154 Phone: 02 4013 4640
Email: ed.mounsey@wpcwp.com.au / sam.wilderbeek@wpcwp.com.au

www.uungulawindfarm.com.au





Uungula Wind Farm

February 2012

Public Opinion Survey—Landscape Values

We would be pleased if you could spare a little time to answer the following questions and return the form. Your feedback is important to us in making sure we have thoroughly identified local community issues. Your comments help shape the project and allow for the best possible wind farm proposal to be submitted.

How close do you live to the proposed wind farm?

0 - 5km ☐

5 - 15km ☐

Over 15km ☐

Which attributes of the landscape surrounding the proposed wind farm do you value most? Please list any you can think of.

.....

.....

.....

.....

Do you visit the landscape surrounding the proposed wind farm for recreational activities? Please list.

.....

.....

.....

.....

Do you travel along any of the local roads surrounding the proposed wind farm on a regular basis (either daily or several times a week)? Are there any memorable views you experience from these road corridors?

.....

.....

.....

.....

Where would you go to see a distant or panoramic view from the landscape surrounding the wind farm? Please list any locations you can think of.

.....

.....

.....

.....

Are there any features or landmarks within the landscape surrounding the wind farm that have a specific historic or personal memory for you? Please list any you can think of.

.....

.....

.....

.....



Uungula Wind Farm

February 2012

Public Opinion Survey—Landscape Values cont'd

Over time, have you noticed any physical changes in the landscape surrounding the proposed wind farm? Please list any you can think of.

.....
.....
.....
.....

Do you think you will have a view of the wind farm from your house or within your property? If yes, please can you provide the name of your property.

.....
.....
.....
.....

Do you believe that the wind farm will have a positive, negative, or neutral impact on the landscape?

.....
.....
.....
.....

Do you have any other comments or suggestions?

.....
.....
.....
.....
.....

If you would like to be kept up-to-date about the Uungula Wind Farm, please let us know below. Any details you provide will be held in the strictest confidence and used only to update you on the project.

Preferred method of contact:

Post ☐

Email ☐

Telephone ☐

Name:
Postal Address:
Email:
Phone:

Please post/email/fax your completed copy of the Public Opinion Survey to the details below:

Post: Wind Prospect CWP Pty Ltd, PO Box 1708, Newcastle, NSW 2300
Email: ed.mounsey@wpcwp.com.au / sam.wilderbeek@wpcwp.com.au
www.uungulawindfarm.com.au
Fax: 02 4926 2154 Phone: 02 4013 4640

MEDIA RELEASE

Date: 15th January 2013



Uungula Wind Farm Community Consultative Committee established.

The first meeting of the Uungula Wind Farm Community Consultative Committee (CCC) will be held in February. Community and Council representatives, and Wind Prospect CWP staff will be attending; with Margaret Macdonald-Hill to chair the CCC. Margaret has considerable experience chairing such committees in the coal and gas sectors.

The CCC is another consultation channel to allow the community and the wind farm team to share information about the project. “We look forward to listening and talking with members of the committee as we continue to develop the project, and work through challenges and opportunities as they arise” commented Ed Mounsey, Head of Development at Wind Prospect CWP.

Wind Prospect CWP held a public open day last year, has two feedback surveys in circulation, and continues to seek input from all stakeholders. The Uungula Wind Farm development team is keen to share further details about the project design and associated infrastructure with the community and CCC as the project matures. Ed Mounsey commented “We are excited about the potential of this project and are looking forward to keeping those interested up-to-date as we continue to investigate, develop and assess the project.”

A number of technical assessments have been undertaken over the last five months, including landscape and visual, ecological, noise and cultural heritage assessments. Feedback from the community and other stakeholders along with the assessment studies help to improve the project, whilst understanding and minimising impacts. Wind Prospect CWP intends to submit an Environmental Assessment which will include the results of these assessments to the Department of Planning and Infrastructure within the next twelve months.

Please keep informed about the project through the wind farm website at uungulawindfarm.com.au and if you require additional information or would like to discuss the progress of the project directly with the Development team, please contact Ed Mounsey on 02 4013 4640.

Wind Prospect CWP Pty Ltd is a joint venture between Wind Prospect Group (WP) and Continental Wind Partners, both international wind farm development companies. The joint venture combines the strengths of the two groups that undertake all aspects of wind energy development, including design, construction and operation of wind farms across 11 countries. With over 18 years of successful development within the industry, Wind Prospect has been involved in the successful delivery of 2,500 MW, including onshore and offshore projects. The company's civil, electrical and mechanical engineers have been involved in the commissioning of over 50 wind farms around the world. Continental Wind Partners has developed and recently completed construction of the largest wind farm in Europe, the 600 MW Fantanele project. To date \$1.5 billion has been invested in this project alone.

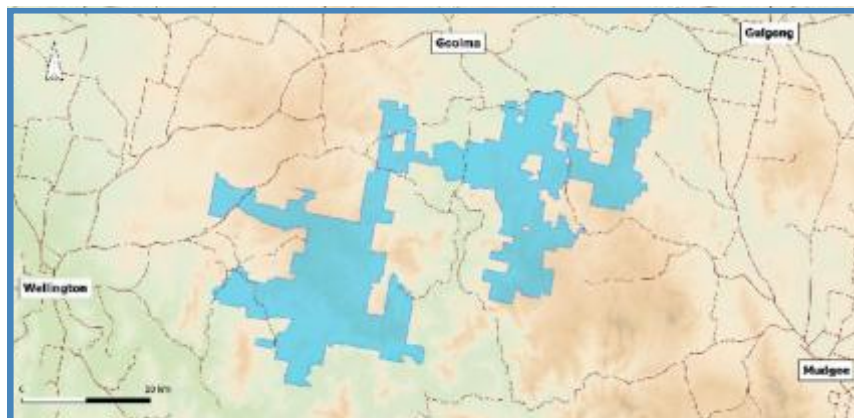
ENDS

Media Outlets

Outlet	Phone	Mail/email address
Mudgee Guardian & Gulgong Advertiser	02 6372 1455	PO Box 255, Mudgee NSW 2850 mail.mguardian@ruralpress.com
The Western Advocate	02 6331 2611	PO Box 11, Bathurst NSW 2795 mail.westernadvocate@ruralpress.com
Radio 2MG, Mudgee	02 6372 1777	PO Box 17, Mudgee NSW 2850 news@2mg.com.au
ABC Central West	02 6393 2511	PO Box 8549, East Orange NSW 2800 news.westnsw@abc.net.au
Prime Television	02 6881 1777	shannon.marshall-mccormack@prime7.com.au
Wellington Times	02 6845 2755	editor.welltimes@ruralpress.com
Newcastle Herald		ngoffet@theherald.com.au

Project Update

Wind Prospect CWP is assessing the potential for a wind farm on rural land between Wellington, Goolma, Gulgong and Mudgee, north of Lake Burrendong, New South Wales. The wind farm project consists up to 249 wind turbine locations, which if all are constructed would produce clean, renewable electricity for the equivalent demand of about 180,000 average Australian homes¹.



General location of the proposed Uungula Wind Farm

With this newsletter, we aim to provide you with more information about the proposed wind farm and update you with how the project has changed since the Public Open Day held in Goolma early last year. There is also an updated map of the wind farm and some photomontages to give you an idea of how the wind farm might look.

Changes to the Uungula Wind Farm (UWF) investigation area and wind turbine layout have been informed from ongoing community consultation and results of independent consultant studies. The design of UWF aims to seek a balance between providing clean energy and economic stimulus benefits against the impacts identified within the Environmental Assessment being produced for the project.

The map included with this newsletter shows the proposed wind turbine location areas and transmission line easement routes. Further project detail will be described in the Environmental Assessment which will be submitted to the Department of Planning and Infrastructure in the coming months.

This newsletter is the third in a series covering the progress of the development of the wind farm. In parallel, up to date information is displayed on the project website at www.uungulawindfarm.com.au. Our contact details are also available on the back page of this newsletter should you wish to contact us directly.

Uungula Wind Farm - Key Facts

Clean Energy

- The equivalent of about 180,000 average homes¹ across Australia would be supplied with clean renewable electricity - that is enough to supply all of the houses in Newcastle, NSW
- This is the same as taking around 5.8 million cars off the road each year

Local Jobs and Investment

- Construction: 480 direct jobs
1,500 indirect jobs
- Local construction spend: \$12 million dollars
- Operation: 48 direct jobs
120 indirect jobs
- Local operation spend: \$1.2 million dollars
- Income to local farmers of around \$2.1 million a year
- Community funds for local projects

¹ based on an indicative capacity factor of c.35% from 425 MW installed, and an average household energy use of 7.3 MWh p.a. (NSW OEH - Power use in NSW, 2012)

UUNGULA WIND FARM

UWF consists of up to 249 wind turbine locations with a rated capacity upwards from 1.5 MW each. The wind turbines would be three-bladed, semi-variable speed, pitch regulated machines mounted on top of a welded steel shell or a concrete steel hybrid tower. Blade lengths range from 37 m up to 72 m with tower heights ranging from 80 m to 120 m. We do not yet know which wind turbine model will be best suited for UWF, however to ensure we address the greatest potential impact, the Environmental Assessment has been undertaken with regard to the largest available wind turbine in the market.

Wind turbines are being proposed on the higher altitude ridges within the site boundary, where they are well spaced and positioned with regards to landscape amenity, existing land use, ecological conservation and cultural heritage values, and to comply with the relevant guidelines and legislation.

UWF would also consist of ancillary structures and equipment which would be positioned in accordance with site constraints. These include access tracks, overhead and underground transmission lines, substations, permanent storage compounds, wind measuring masts plus temporary facilities during the construction phase. The project site is currently used as rural farm land and this would continue to be the case after construction. Once the wind farm is operational it would be monitored remotely, with maintenance staff undertaking regular service and maintenance in line with the selected wind turbine model.

The life span of a wind farm is usually 20 to 25 years, after which time there would be an option to either decommission the site, restoring the area to its previous land use with regard to consent conditions and lease requirements, or to upgrade the equipment and extend the wind farm's operational life.



CLEAN RENEWABLE ELECTRICITY AND LOCAL ECONOMY BENEFITS



UWF will play an important role in contributing to the increasing local and global need for renewable projects to tackle the issues of Global Warming and Climate Change; contributing additional renewable energy generation to meet the legislated Australian target of 20% by 2020. The carbon emissions saved would be the equivalent of taking over 5.8 million cars off the road each year and the electricity produced equivalent to supplying almost 180,000 average homes¹ with clean renewable electricity.

If all proposed wind turbines are built, UWF would create as many as 480 full time equivalent construction jobs with the workforce possibly spending up to \$12 million locally. The indirect employment benefit created by construction of the project could be as many as 1,500 jobs.

During operation of the wind farm, around 48 full time equivalent positions would be created in order to run and maintain the wind turbines. The wind farm operations and maintenance team could spend as much as \$1.2 million a year locally and the staff are likely to live locally. The employment benefit created by the operation of the wind farm could support an additional 120 indirect jobs.

A community fund would contribute money towards local projects such as sporting facilities, events and additional services for the benefit of the wider community. Local farmers would be paid around \$2.1 million dollars a year to have the wind farm on their land. Several farmers have mentioned that this income could be used to employ staff and fund additional farm management programs.

¹ based on an indicative capacity factor of c.35% from 425 MW installed, and an average household energy use of 7.3 MWh p.a. (NSW OEH - Power use in NSW, 2012)

ENVIRONMENTAL ASSESSMENT

The Environmental Assessment involves collecting and assessing data for a number of studies from across the site to determine the likely impact from the project in the following areas;



Ecology: Consultants have been collecting data on site over the spring / summer season. Feedback from this process has resulted in modifications to the wind farm design which minimise impacts on flora and fauna. We are especially mindful of impacts on threatened and endangered species, including Swift Parrot, Regent Honey-eater, Spotted-tail Quoll and Box Gum Woodlands.

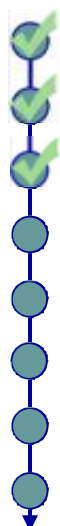
Cultural Heritage: Indigenous and non-indigenous heritage aspects have been assessed. Consultants have undertaken a walkover of the project area, which benefitted from the involvement of local Aboriginal groups. Very few sites were discovered, limited to a few artefact scatters which have been documented, and management and mitigation measures will be adopted.

Noise: Background sound levels have been recorded at 15 residences around the project site. The data has been used to develop the wind turbine layout with some turbines removed or modified to ensure that the impacts are within NSW regulations, which are some of the strictest in the world.

Landscape and Visual: 3D modelling and the production of wind farm photomontages is used to assess landscape effects and visual amenity. This assessment also determines how visible the wind farm will be from representative viewpoints around the local area such as local roads and vantage points.

Other Assessments: These include Traffic and Transport, Fire and Bushfire Risk, Water, Communications, Aviation and Electro-magnetic Interference assessments. The results of these reports can also help inform the wind turbine layout prior to submission for planning consent.

PROJECT TIME LINE



- March 2011 - Project Announced
- April 2011 - Director General's Requirements Issued
- Ongoing - Consultation with Stakeholders
- Mid 2013 - Submit Environmental Assessment
- Q3 2013 - Public Exhibition
- Q1 2014 - Decision - Dept. Planning & Infrastructure
- 2014/15 - Construction Begins (if approved)
- 2016/17 - Begin Operation

COMMUNITY CONSULTATION

The UWF Community Consultative Committee (CCC) met for the first time on the 11th of February, 2013. The CCC has been established as another consultation channel to allow the community and the developer to share information about the project. The CCC has agreed to meet quarterly and is chaired by Margaret MacDonald-Hill, who has significant experience chairing similar committees in the coal and gas sectors. The appointed members are;

- Daniel MacDonald (Wind Prospect CWP)
- Sam Wilderbeek (Wind Prospect CWP)
- Jim MacDonald (Twelve Mile Road)
- Heather Gough-Fuller (Twelve Mile Road)
- Michael Flynn (Upper Piambong Road)
- Chris McDonnell (Guroba Road)
- Steve Lowe (Yarrabin Road)
- Craig Stubbs (Gulgong)
- Louisa Kiely (Uamby Road)
- Rob Buhr (Mayor, Wellington Council)
- Michael Tolhurst (General Manager, Wellington Council)
- Catherine Van Learen (Group Manager, Development and Services, Mid Western Regional Council)
- John Weatherley (Councillor, Mid Western Regional Council)

You can get in contact with the CCC by contacting Daniel MacDonald (details on back) and we will pass your details on to the committee.

WHY WIND?

- Australia has a world class wind resource which can provide comparatively priced, clean and 'forecastable' energy to the nation.
- The development of wind farms helps to meet our demand for power.
- Utilising wind energy increases our diversity of energy sources thereby increasing our security of electricity supply.
- We need to reduce our greenhouse gas emissions under the Kyoto Protocol.
- Wind energy integrates very well with other renewable and fossil fuel technologies already in existence across the country.

DRIVERS FOR RENEWABLE ENERGY GENERATION

The Australian Government's enhanced Renewable Energy Target (eRET) was established to encourage additional generation of electricity from renewable energy sources and to achieve a commitment of a 20 percent share of renewables in Australia's electricity supply by 2020. The eRET places a legal liability on wholesale purchasers of electricity (e.g. electricity retailers) to proportionally contribute to an additional 41,000 GWh of renewable energy from large renewable energy generators like wind farms each year.

The steep 'ramp up' profile of the requirements of eRET up to 2020 and the significant lead time which is required to develop renewable energy projects through to construction, requires the commencement of new projects now.

WIND PROSPECT CWP PTY LTD



Wind Prospect CWP Pty Ltd is a NSW based wind farm development company with an office in Newcastle. Our staff are experienced wind farm professionals with a range of skills in planning, engineering and environmental science.

Wind Prospect CWP Pty Ltd is a partnership between the Wind Prospect Group (WP) and Continental Wind Partners (CWP). WP undertake all aspects of wind energy development, including design, construction, operation and commercial services, with offices in the UK, Ireland, Canada, Australia and China. With over 18 years of successful development within the industry, WP has been involved in over 2,500 MW of approved wind farms. WP's domestic operation lays claim to being the most successful independent developer in Australia, having achieved planning approval for 12 wind farms totalling over 1,100 MW, of which 565 MW are

operating or under construction.

CWP were established in 2007 to finance the development of wind farms in Romania and Poland. They have since grown to be a leader in renewable energy development, expanding into the rest of Europe and Australia, with projects totalling over 4,500 MW including one of the largest project in Europe, the 600 MW Fantanele wind farm now operating in Romania. Our most recent planning success is in New South Wales with the Boco Rock Wind Farm (260 MW) located approximately 40 km south of Cooma.

USEFUL WEBSITES

- Ungula Wind Farm: www.uungulawindfarm.com.au
- Wind Prospect: www.windprospect.com
- Continental Wind Partners: www.continentalwind.com
- Clean Energy Council: www.cleanenergycouncil.org.au
- BioBanking: www.environment.nsw.gov.au/biobanking



Please post/email/fax your comments to us via:

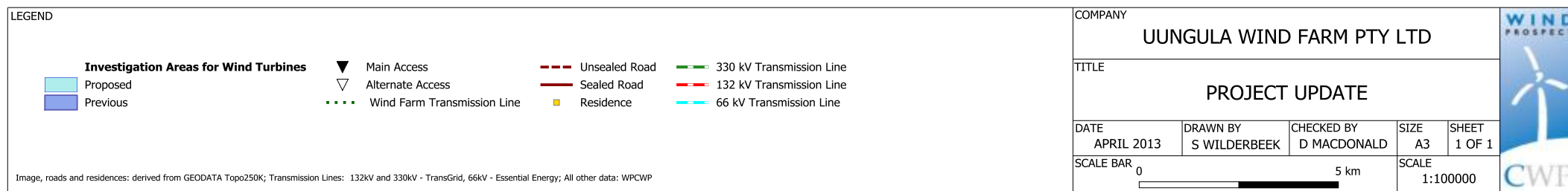
Post: Wind Prospect CWP Pty Ltd, PO Box 1708, Newcastle, NSW 2300

Fax: 02 4926 2154 Phone: 02 4013 4640

Email: daniel.macdonald@wpcwp.com.au

www.uungulawindfarm.com.au







Photomontage A: View from Castlereagh Highway (Nearest turbine in view is 9.7 kms away)



Photomontage B: View from the corner of Wuuluman and Yarragal Roads (Nearest turbine in view is 2.4 kms away)



CWP

Uungula Wind Farm - Sample Photomontages





Uungula Wind Farm

Landowner Opportunity - Environmental Offsets

Wind Prospect CWP (WPCWP) is developing Uungula Wind Farm (UWF) located within the Wellington and Mid-Western Regional Council areas, NSW. As with all major projects, UWF will have an impact on biodiversity resulting from activities associated with the construction and operation of the wind farm. As a result, UWF is required to establish an environmental offset, to preserve ecological habitat on a like for like basis, in and around the project area, to be set aside and managed for conservation.



In NSW the preferred environmental offset mechanism is the Biodiversity Banking Offset Scheme (BioBanking) operated by the Office of Environment and Heritage (OEH). BioBanking brings together landowners who have native vegetation and fauna on their property and developers such as WPCWP who may be able to protect the biodiversity through an environmental offset. By participating in the BioBanking scheme, a landowner can benefit from a guaranteed income stream to permanently set aside and manage one or more selected areas of land for conservation. Opportunities also exist for landowners to sell land with the relevant biodiversity values, which would be set aside under the BioBanking scheme.

To find out more about BioBanking a summary can be obtained from the OEH website:

<http://www.environment.nsw.gov.au/resources/biobanking/09383bbowners.pdf>.

If this sounds like something you may be interested in, please complete the form below and return to Wind Prospect CWP, PO Box 1708, Newcastle, NSW 2300 or email to uungula.biobanking@wpcwp.com.au
For further information please call (02) 4013 4640.

Name:			
Address:			
Phone:		Email:	
Total property size (Acres / hectares):			
Lot & DP(s) to be considered for BioBanking:			
<i>If possible, please attach a map highlighting the location of the property to be considered.</i>			
<u>Vegetation types:</u> (if known - tick those present on the land you are nominating)			
<input type="checkbox"/>	Blakely's Red Gum – Rough-barked Apple Box	<input type="checkbox"/>	White Box - White Cypress Pine
<input type="checkbox"/>	Ironbark and/or Stringybark	<input type="checkbox"/>	White Box - Kurrajong
<input type="checkbox"/>	Tumbledown Red Gum - Cypress Pine - Red Box	<input type="checkbox"/>	Yellow Box on flats and alluvial terraces
<input type="checkbox"/>	Cypress Pine Woodland	Other:	
Native vegetation condition :			
<input type="checkbox"/>	Grazed	<input type="checkbox"/>	Un-grazed
Preference:			
<input type="checkbox"/>	Manage	<input type="checkbox"/>	Sell
Existing conservation agreements: (e.g. Property Vegetation Plan, Stewardship)			
Other comments:			

MEDIA RELEASE

Date: 1st May 2013



Uungula Wind Farm – Final Stages of Environmental Assessment

Wind Prospect CWP is in the final stages of preparing an Environmental Assessment (EA) for the proposed Uungula Wind Farm. The wind farm consists of up to 249 potential wind turbine sites and associated infrastructure on 30 properties. The extent of the project has been reduced since the Public Open Day last year. The improvements to design have been made as a result of dialogue with local stakeholders and through impact assessments undertaken by independent experts. The EA will detail impacts associated with the wind farm as well as highlight the significant benefits that could be generated for the region.

Development Manager for the project Daniel MacDonald commented “The project team has worked hard since March 2011 to design a wind farm that has reduced its associated impacts in the area. It’s exciting to be developing a clean energy project that could potentially provide 480 full time equivalent jobs during construction and 48 full time operations positions. The effect of construction and operation of the wind farm would be millions of additional dollars flowing into the local community, providing business stimulus, additional farm income and funds for local community projects.”

An updated map of the project is included in the third newsletter and is available for download on the project website www.uungulawindfarm.com.au. The latest wind farm design involves wind turbine locations consolidated around a fewer number of ridges. Consideration has been given to minimise the number of access points from main roads to avoid unnecessary impacts to local Council roads where practical.

It is anticipated that the EA will be on Public Exhibition via the NSW Department of Planning and Infrastructure from Q3 2013.

Wind Prospect CWP encourages members of the community to keep up to date by visiting the project website at www.uungulawindfarm.com.au. If you require additional information or would like to discuss the progress of the project further, please contact Daniel MacDonald on 0400 781 651.

Wind Prospect CWP Pty Ltd is a NSW based wind farm development company with an office in Newcastle. Our staff are experienced wind farm professionals with a range of skills in planning, engineering and environmental science.

Wind Prospect CWP Pty Ltd is a partnership between the Wind Prospect Group (WP) and Continental Wind Partners (CWP). WP undertake all aspects of wind energy development, including design, construction, operation and commercial services, with offices in the UK, Ireland, Canada, Australia and China. With over 18 years of successful development within the industry, WP has been involved in over 2,500 MW of approved wind farms. WP's domestic operation lays claim to being the most successful independent developer in Australia, having achieved planning approval for 12 wind farms totalling over 1,100 MW, of which 565 MW are operating or under construction.

CWP were established in 2007 to finance the development of wind farms in Romania and Poland. They have since grown to be a leader in renewable energy development, expanding into the rest of Europe and Australia, with projects totalling over 4,500 MW including one of the largest project in Europe, the 600 MW Fantanele wind farm now operating in Romania. Our most recent planning success is in New South Wales with the Boco Rock Wind Farm (260 MW) located approximately 40 km south of Cooma.

Wind Farm	State	Turbines	Total MW	Status
Hallett I (Brown Hill)	SA	45	94.5	Operating
Snowtown (Stage 1)	SA	47	98.7	Operating
Canunda	SA	23	46	Operating
Mt Millar	SA	35	70	Operating
Hallett II (Hallett Hill)	SA	34	71.4	Operating
Hallett IV (North Brown Hill)	SA	63	132.3	Under Construction
Hallett V (The Bluff Range)	SA	25	52.5	Under Construction
Snowtown (Stage 2)	SA	83	166	Approved
Willogoleche Hill	SA	26	52	Approved
Troubridge Point	SA	15	30	Approved
Boco Rock	NSW	122	260	Approved
Sapphire	NSW	159	325	Under Assessment
Crudine Ridge	NSW	106	135	Under Assessment
Totals		783	1,533.4 MW	

Wind Prospect Wind Farm Developments to Date

ENDS

Media Outlets

Outlet	Phone	Mail/Email address
Mudgee Guardian & Gulgong Advertiser	02 6372 1455	PO Box 255, Mudgee NSW 2850 mail.mguardian@ruralpress.com
The Western Advocate	02 6331 2611	PO Box 11, Bathurst NSW 2795 mail.westernadvocate@ruralpress.com
Radio 2MG, Mudgee	02 6372 1777	PO Box 17, Mudgee NSW 2850 news@2mg.com.au
ABC Central West	02 6393 2511	PO Box 8549, East Orange NSW 2800 news.westnsw@abc.net.au
Prime Television	02 6881 1777	shannon.marshall-mccormack@prime7.com.au
Wellington Times	02 6845 2755	editor.welltimes@ruralpress.com farren.hotham@fairfaxmedia.com.au
Newcastle Herald		ngoffet@theherald.com.au

September 2018

Uungula Wind Farm

Uungula Wind Farm is a proposed wind energy development of up to 127 wind turbines on agricultural land in the central western ranges approximately 14 km east of Wellington, NSW. The project would have a capacity of approximately 400 MW, generating enough power for over 170,500 homes, saving over a million tonnes of greenhouse gas emissions every year.

Uungula Wind Farm will play an important role in increasing competition in the National Energy Market and reducing the market reliance on fossil fuel generation. The site is well suited to wind generation due to its reliable wind resource, low density of rural residential dwellings and proximity to existing transmission infrastructure.

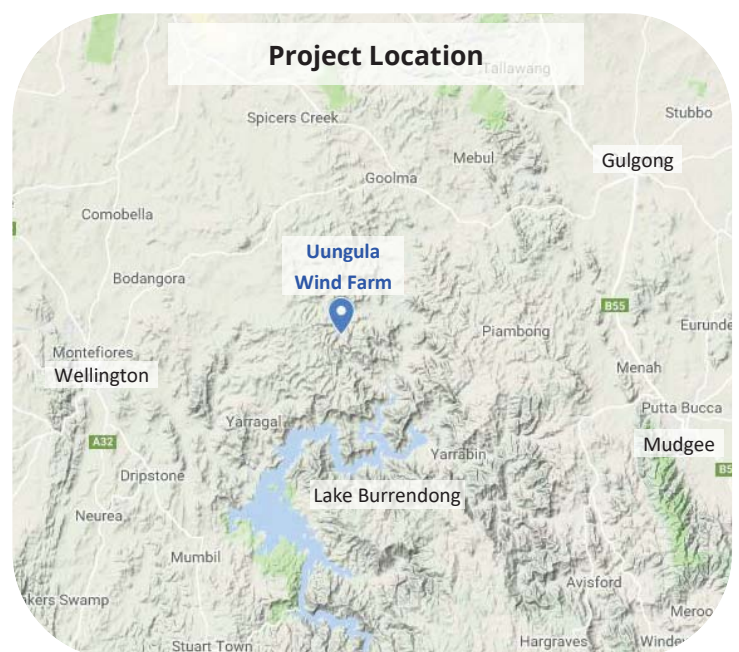
Community Consultative Committee

Uungula Wind Farm Community Consultative Committee (CCC) was established to foster good working relationships between the project, CWP Renewables and the community and to provide a forum for open discussion and information sharing. The CCC continues to meet and will be kept informed of all developments of the wind farm.

If you would like to get in touch with your local CCC member, please contact the Independent Chairperson:

Lisa Andrews—Articulate Solutions

ph: 0401 609 693 or ic.articulatesolutions@gmail.com



Uungula Wind Farm was first publicly announced in 2011 and an Environmental Assessment was prepared in 2013. At that stage the project consisted of 249 turbines within the Wellington Council and Mid-Western Regional Council areas. Following many years of consultation and after a detailed review of the grid network, the project was revised in July 2018 to focus on the western half of the project only, between Wellington and the Cudgegong River, and 122 turbines were removed from the plans.

The result is a carefully considered wind farm design which capitalises on the reliable wind resources of the district, in an area of NSW with very low population density and low potential for adverse impacts. The project now falls entirely within the Dubbo Regional Council area and would make a significant contribution to the Wellington area, adding to the growing number of renewable energy projects fuelling the local economy.

Mark Branson

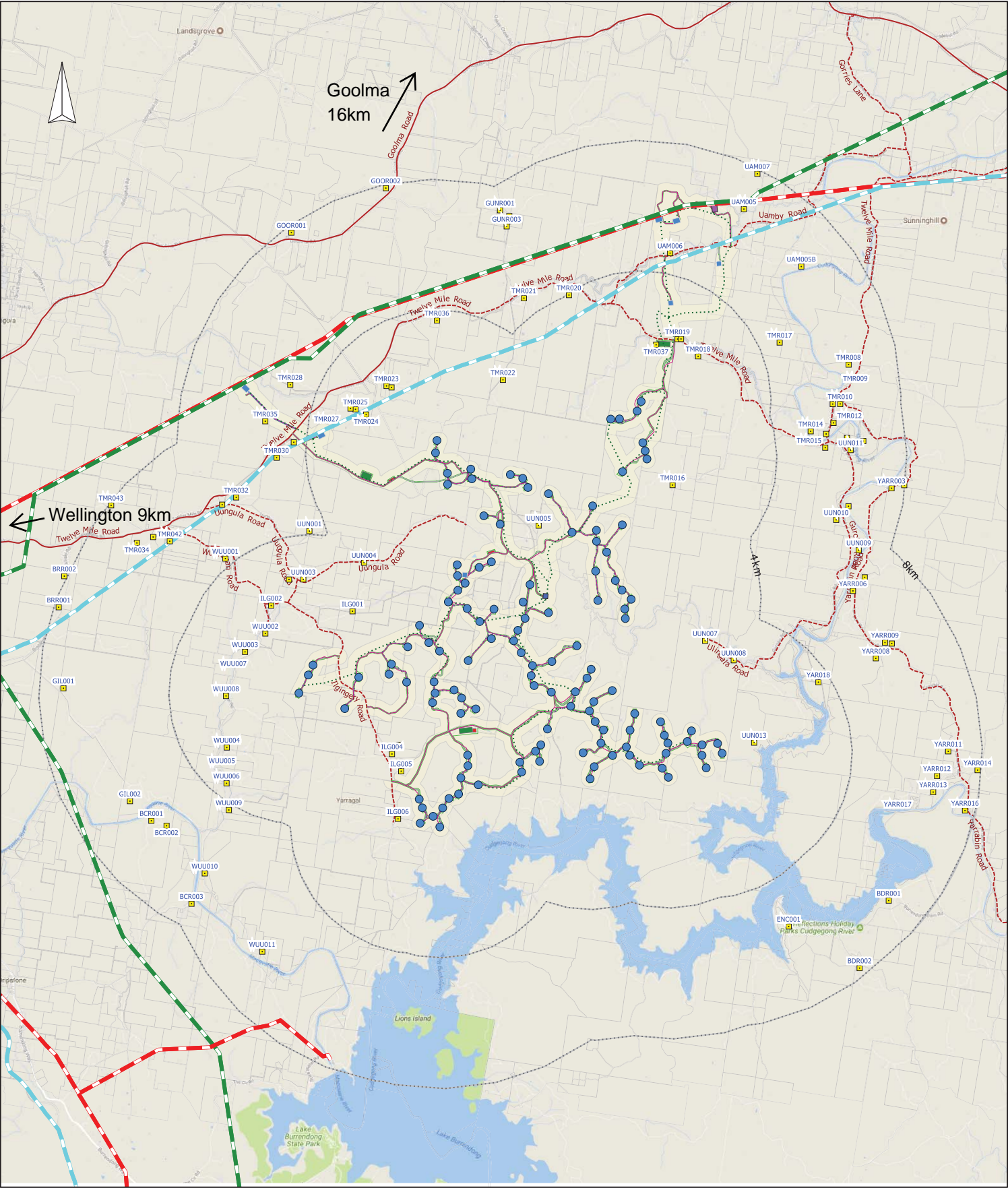
Senior Development Manager

Phone: +61 (02) 4013 4640

Email: info@uungulawindfarm.com.au

Sign up to the e-newsletter and find out more on the Uungula Wind Farm website:

www.uungulawindfarm.com.au



<div>LEGEND</div> <div><div><div><div><div></div><div>Wind Turbines (127)</div></div><div><div></div><div>Dwellings</div></div><div><div></div><div>Access Track</div></div><div><div></div><div>Roads:</div></div><div><div></div><div>Sealed</div></div><div><div></div><div>Unsealed</div></div><div><div></div><div>Development Corridor</div></div></div><div><div><div><div></div><div>Site Compound</div></div><div><div></div><div>Rock Crushing/Batching Plant</div></div><div><div></div><div>Temp Impact Area</div></div><div><div></div><div>Perm Impact Area</div></div></div><div><div><div><div></div><div>Cables (overhead)</div></div><div><div></div><div>Cables (underground)</div></div><div><div></div><div>Powerlines:</div></div><div><div></div><div>132kV</div></div><div><div></div><div>330kV</div></div><div><div></div><div>66kV</div></div></div></div></div><tr><td colspan="2"><div>COMPANY</div><div><div>UUNGULA WIND FARM PTY LTD</div><div><div>cwp</div><div>Renewables</div></div></div></td></tr><tr><td colspan="2"><div>TITLE</div><div>PROJECT AND SURROUNDS</div></td></tr><tr><td><div>DATE</div><div>06/09/2018</div></td><td><div>SCALE</div><div>1:140000</div></td><td><div>DWG NO</div><div>UWF-04</div></td><td><div>REV</div><div>A</div></td><td><div>VER</div><div>1</div></td></tr><tr><td><div>DRAWN BY</div><div>J PETERSEN</div></td><td><div>CHECKED BY</div><div>M BRANSON</div></td><td><div>SHEET</div><div>1 OF 1</div></td><td><div>JOB NO</div><div>110247</div></td><td><div>SIZE</div><div>A3</div></td></tr></div></div>		<div>COMPANY</div> <div><div>UUNGULA WIND FARM PTY LTD</div><div><div>cwp</div><div>Renewables</div></div></div>		<div>TITLE</div> <div>PROJECT AND SURROUNDS</div>		<div>DATE</div> <div>06/09/2018</div>	<div>SCALE</div> <div>1:140000</div>	<div>DWG NO</div> <div>UWF-04</div>	<div>REV</div> <div>A</div>	<div>VER</div> <div>1</div>	<div>DRAWN BY</div> <div>J PETERSEN</div>	<div>CHECKED BY</div> <div>M BRANSON</div>	<div>SHEET</div> <div>1 OF 1</div>	<div>JOB NO</div> <div>110247</div>	<div>SIZE</div> <div>A3</div>
<div>COMPANY</div> <div><div>UUNGULA WIND FARM PTY LTD</div><div><div>cwp</div><div>Renewables</div></div></div>															
<div>TITLE</div> <div>PROJECT AND SURROUNDS</div>															
<div>DATE</div> <div>06/09/2018</div>	<div>SCALE</div> <div>1:140000</div>	<div>DWG NO</div> <div>UWF-04</div>	<div>REV</div> <div>A</div>	<div>VER</div> <div>1</div>											
<div>DRAWN BY</div> <div>J PETERSEN</div>	<div>CHECKED BY</div> <div>M BRANSON</div>	<div>SHEET</div> <div>1 OF 1</div>	<div>JOB NO</div> <div>110247</div>	<div>SIZE</div> <div>A3</div>											

Uungula Wind Farm

Project Design

Community consultation for the Uungula Wind Farm has been underway since 2011 and the CCC was established in 2013. In a direct response to community feedback, turbines and ancillary infrastructure once proposed for the Piambong and Yarrabin areas no longer form part of the project design. The project area is now bounded by Twelve Mile Road, Ilgingerry Road, Guroba Road and Burrendong Dam.

The proposed wind farm has been carefully positioned and is proposed at a scale which balances the environmental, social and economic aspects of the region and Australia's energy generation needs.

A detailed assessment of potential impacts of the wind farm on local residents of the area is being undertaken as part of the planning and approvals process.



Planning and Approvals

An Environmental Assessment was prepared in 2013 for the project which then consisted of 249 turbines within the Wellington Council and Mid-western Regional Council areas. Due to changes in the energy market at the time, the project Development Application was not formally lodged and the project was transitioned to the State Significant Development process.

An Environmental Impact Statement (EIS) is currently being prepared for the revised project in accordance with the NSW Wind Energy Framework (DPE 2016) Visual Assessment Bulletin and Noise Assessment Bulletin. The Framework provides clarity, consistency and transparency for the community regarding both assessment and decision-making on State Significant Development projects.

The EIS will include a full description of the development, including details of construction, operation, upgrading and decommissioning as well as detailed analysis of impacts on neighbouring residences. Technical studies are currently underway and the EIS is expected to be released for public exhibition in early 2019. Public submissions on the EIS are welcomed and the community will be notified once it is released.

Contact Us

The project team will be working within the community to answer questions, understand concerns and provide mitigations where appropriate to limit the impacts of the project on local residents. Please contact us using the details below to find out more.

Mark Branson
Senior Development Manager
Phone: +61 (02) 4013 4640
Email: info@uungulawindfarm.com.au

Sign up to the e-newsletter and find out more on the Uungula Wind Farm website:
www.uungulawindfarm.com.au



About Us

CWP Renewables

45 Hunter Street Newcastle NSW

Phone: +61 (02) 4013 4640

Email: info@cwprenewables.com

CWP Renewables is a leading renewable energy developer, owner and asset manager with full project life-cycle expertise. Our team holds a wealth of experience in the renewable energy sector, accumulated through the successful delivery of projects in Europe and Australia.

We develop and own utility-scale renewable energy facilities incorporating wind, solar and storage technologies, oversee project delivery and commissioning, and provide long-term operational asset management services. Our unique approach to own and manage each project from inception through to full operation ensures genuine engagement with all stakeholders at every stage of development.

CWP Renewables has been developing projects in Australia since 2007. Key development activities are coordinated from our offices in Newcastle and Sydney, with asset management services delivered from Canberra.

Our geographically dispersed portfolio of wind and solar projects is unique in the marketplace, combining generation profiles from different technologies and includes storage. This portfolio of aggregated, complimentary and manageable generation can be forecast and sold into the National Energy Market (NEM) or direct to end users, setting us apart from single technology renewable energy project developers in the sector.

Our commitment to delivering combined and complimentary renewable energy generation from our portfolio can be seen in the New England region of NSW, where construction of our 270 MW Sapphire Wind Farm is well underway, and where we are developing a complementary 200 MW solar and battery storage facility. These two projects will combine to deliver low-cost manageable renewable energy generation in to the NEM and/or direct to end use customers.

Find out more about CWP Renewables on our website:
www.cwprenewables.com

Uungula Wind Farm Community Survey of Landscape Values

About the Project:

Uungula Wind Farm is a proposed wind farm to be located between the localities of Wuuluman and Twelve Mile approximately 14 east of Wellington, NSW. The project would include up to 125 wind turbine generators and ancillary infrastructure with a generating capacity of approximately 400 MW (see map below). If approved the Project is likely to commence construction toward the end of 2020.

Further details are provided on the Project website: www.uungulawindfarm.com.au

Community Survey:

An Environmental Impact Statement (EIS) is currently in preparation and is expected to be released for public exhibition in early 2019. As part of the Community

Consultation process, we are seeking feedback from the local community to understand the landscape features and scenic values of the region. The survey on the next page has been prepared as a simple questionnaire to seek your input. The information will be used to inform the wind farm design and the landscape and visual impact assessment within the EIS.

You can complete the survey by either filling out the attached form or visiting the Project website.

The survey has been prepared to address requirements of the *NSW Wind Energy Guideline (2016)* and the *Wind Energy: Visual Assessment Bulletin* prepared by the NSW Department of Planning and Environment. Further information can be found on the project website, or by contacting our development team using the details below.



Uungula Wind Farm Community Survey of Landscape Values

Name: _____

Which location best describes where you live?

- | | |
|---|--------------------------------------|
| <input type="checkbox"/> Twelve Mile | <input type="checkbox"/> Wuuluman |
| <input type="checkbox"/> Yarragal | <input type="checkbox"/> Wellington |
| <input type="checkbox"/> Piambong | <input type="checkbox"/> Yarrabin |
| <input type="checkbox"/> Lake Burrendong | <input type="checkbox"/> Bodangora |
| <input type="checkbox"/> Goolma | <input type="checkbox"/> Mudgee |
| <input type="checkbox"/> Elsewhere in NSW | <input type="checkbox"/> Outside NSW |

What is your gender?

- ☐ Female ☐ Male ☐ Prefer not to say

What is your age group?

- ☐ 18-29 ☐ 30-44 ☐ 45-60 ☐ 61+ ☐ Prefer not to say

If you live close to the proposal, are you currently involved in the project?

- ☐ Yes ☐ No ☐ I do not live close by

What do you value most about the local area? (choose one or more)

- | | |
|---|---|
| <input type="checkbox"/> Community | <input type="checkbox"/> Local history |
| <input type="checkbox"/> Views | <input type="checkbox"/> Recreation areas |
| <input type="checkbox"/> Farming | <input type="checkbox"/> Bushland areas |
| <input type="checkbox"/> Employment opportunities | |

What landscape features do you think have the most scenic value in the local area? (choose one or more)

- ☐ Lake Burrendong
☐ Wellington Caves
☐ Mount Arthur Reserve
☐ Bushland areas
☐ Rocky hills and outcrops
☐ Farmland and rolling hills
☐ Local rivers and creeks

Do you support renewable energy investment in your region?

- ☐ Yes ☐ No ☐ Indifferent

What views or landscape characteristics in the region and local area are important to you? (feel free to draw on the map on the previous page)

What impact do you think the Uungula Wind Farm would have on the character of the local landscape?

- Positive Neutral Negative
- ☐ I haven't decided

Which statement best describes your visual relationship to the proposed wind farm (tick all that apply)

- ☐ I may see the wind farm from my house
☐ I may see the wind farm from my property
☐ I may see the wind farm from where I work
☐ I live in the area where the wind farm is located but do not believe I will see the wind farm
☐ I may see the wind farm from a place of recreation

Please rank how much impact you believe the wind farm will have on the local area:

- ☐ Low impact - the wind farm will impact few views and landscape areas
☐ Medium impact - the wind farm will impact some views and landscape areas
☐ High impact - the wind farm will change most local views and landscape areas

Do you think the proposed wind farm is well situated?

- ☐ Yes ☐ No ☐ Indifferent

Can you see the Bodangora Wind Farm from your house?

- ☐ Yes ☐ No ☐ Unsure

Please post this form to:

**Uungula Wind Farm
CWP Renewables
PO Box 1708
Newcastle NSW 2300**



Uungula Wind Farm

Uungula Wind Farm is a proposed wind farm to be located between the localities of Wuuluman and Twelve Mile approximately 14 east of Wellington, NSW. The Project is being developed by CWP Renewables, one of Australia’s leading renewable energy developers and asset managers.

The project would include up to 125 wind turbine generators and ancillary infrastructure with a generating capacity of approximately 400 MW. An Environmental Impact Statement (EIS) is currently in preparation and is expected to be released for public exhibition in early 2019. If approved the Project is likely to commence construction toward the end of 2020.

A Community Consultative Committee has recently been re-established with the first meeting expected to be held in early November. Further information can be found on the Project website <https://uungulawindfarm.com.au>

Community Survey of Landscape Values

As part of the Community Consultation process, we are seeking feedback from the local community to understand the important landscape features and scenic values of the region. The survey (via the link below) has been prepared as a simple questionnaire to seek your input.

The information will be used to inform the wind farm design and the landscape and visual impact assessment within the EIS. The survey has been prepared to address requirements of the *NSW Wind Energy Guideline (2016)* and the *Wind Energy: Visual Assessment Bulletin* prepared by the NSW Department of Planning and Environment. Further information can be found on the project website, or by contacting our development team.

Hardcopy surveys will also be available at Dubbo Regional Council offices.

[Participate in the survey here](#)

About Us



Uungula Wind Farm is being developed by CWP Renewables.

[CWP Renewables](#) is a leading renewable energy developer, owner and asset manager with full project life-cycle

expertise. Our team holds a wealth of experience in the renewable energy sector, accumulated through the successful delivery of projects in Europe and Australia.



We develop and own utility-scale renewable energy facilities incorporating wind, solar and storage technologies, oversee project delivery and commissioning, and provide long-term operational asset management services. Our unique approach to own and manage each project from inception through to full operation ensures genuine engagement with all stakeholders at every stage of development.

CWP Renewables has been developing projects in Australia since 2007. Key development activities are coordinated from our offices in Newcastle and Sydney, with asset management services delivered from Canberra.

Mailing List

This e-newsletter will be used on a quarterly basis to provide updates about the project. We will also be updating the Uungula Wind Farm project website regularly.

You can [unsubscribe](#) from our mailing list if you do not wish to receive updates.



Get in Touch

Please visit the [Uungula Wind Farm website](#) to learn more.

If you want to contact us directly, please respond to this email or use the contact details below.

Kind Regards,
Mark Branson
Senior Development Manager
CWP Renewables



Copyright ©2017 Uungula Wind Farm Pty Ltd, All rights reserved.

Mark Branson
Senior Development Manager - Uungula Wind Farm
CWP Renewables
PO Box 1708
Newcastle
NSW 2300

Tel: 02 4013 4640

Our mailing address is:
info@uungulawindfarm.com.au

Want to change how you receive these emails?
You can [unsubscribe](#) from this list.

June 2019

Uungula Wind Farm

Uungula Wind Farm is a proposed development of up to 117 wind turbine generators on agricultural land approximately 14 km east of Wellington, NSW.

The project would have a capacity of approximately 400 MW, generating enough power for over 170,500 homes, saving over a million tonnes of greenhouse gas emissions every year.

An Environmental Impact Statement (EIS) is currently being prepared and a development application is expected to be lodged later this year.

Community Benefits:

A community benefits program is being developed in consultation with the community. The Project is looking for opportunities to work with local organisations to support initiatives which can provide lasting benefits to the region in areas such as education, training, employment and social outcomes.

Please get in touch using the details below if you would like to discuss an opportunity to work together.

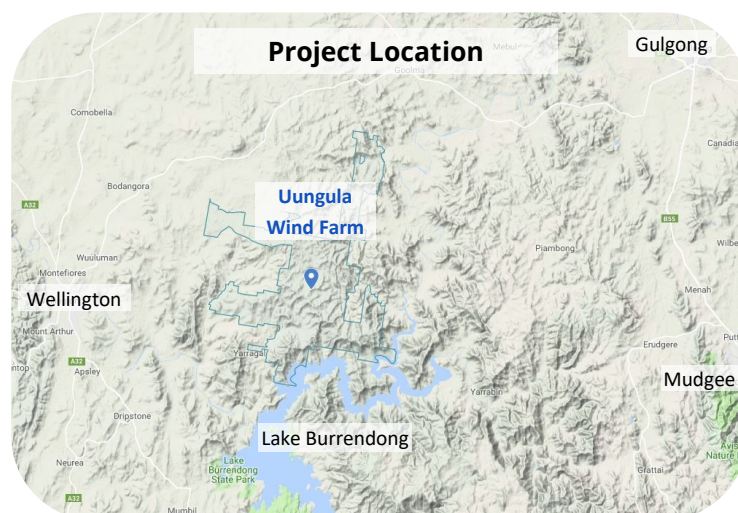
Economic Benefits:

The economic impacts of the Project have been assessed by Essential Economics. (Report to be available in the EIS). Regionally the project is expected to deliver:

- Approximately 250 construction jobs
- Approximately 25 full time jobs during operations

Additionally, there will be significant flow on effects for the region including:

- An estimated \$5.6 million in additional spending likely be directed to local and regional businesses within Wellington and Dubbo during construction
- This level of spending would support approximately 30 full time jobs in the service sector



Traffic and Transport:

The primary site access will be on Twelve Mile Road, approximately 13km east of Goolma Road. Secondary site entrances are shown on the map on the following page.

- A construction traffic and transport assessment is currently underway to evaluate required road upgrades.
- CWP Renewables is working with Council to evaluate dilapidation and maintenance requirements for the local road network.
- A Traffic Management Plan will be developed to adequately manage impacts to the community.

Contact Us

Phone: +61 (02) 4013 4640

Email: info@uungulawindfarm.com.au

Sign up to the e-newsletter and find out more on the

Uungula Wind Farm website:

www.uungulawindfarm.com.au

Uungula Wind Farm

Project Design Update

The Project Design has changed extensively in response to community feedback, environmental investigations, and technological advancements over time.

Recently we have made the decision to remove eight wind turbine generators (WTGs) from the design. This will reduce disturbance to the community during construction, ground disturbance, and impacts to visual amenity in the area. We have also relocated the concrete batching plant away from Twelve Mile Road due to noise concerns.

The Project will comprise up to 117 turbines up to 250 m in height with a rotor of approximately 170 m in diameter. See the map to the left for the revised Project Design.

The project team will be within the area regularly to answer questions, understand concerns and provide mitigations where appropriate to limit the impacts of the project on local residents. Please get in touch using the details below.



Planning and Approvals

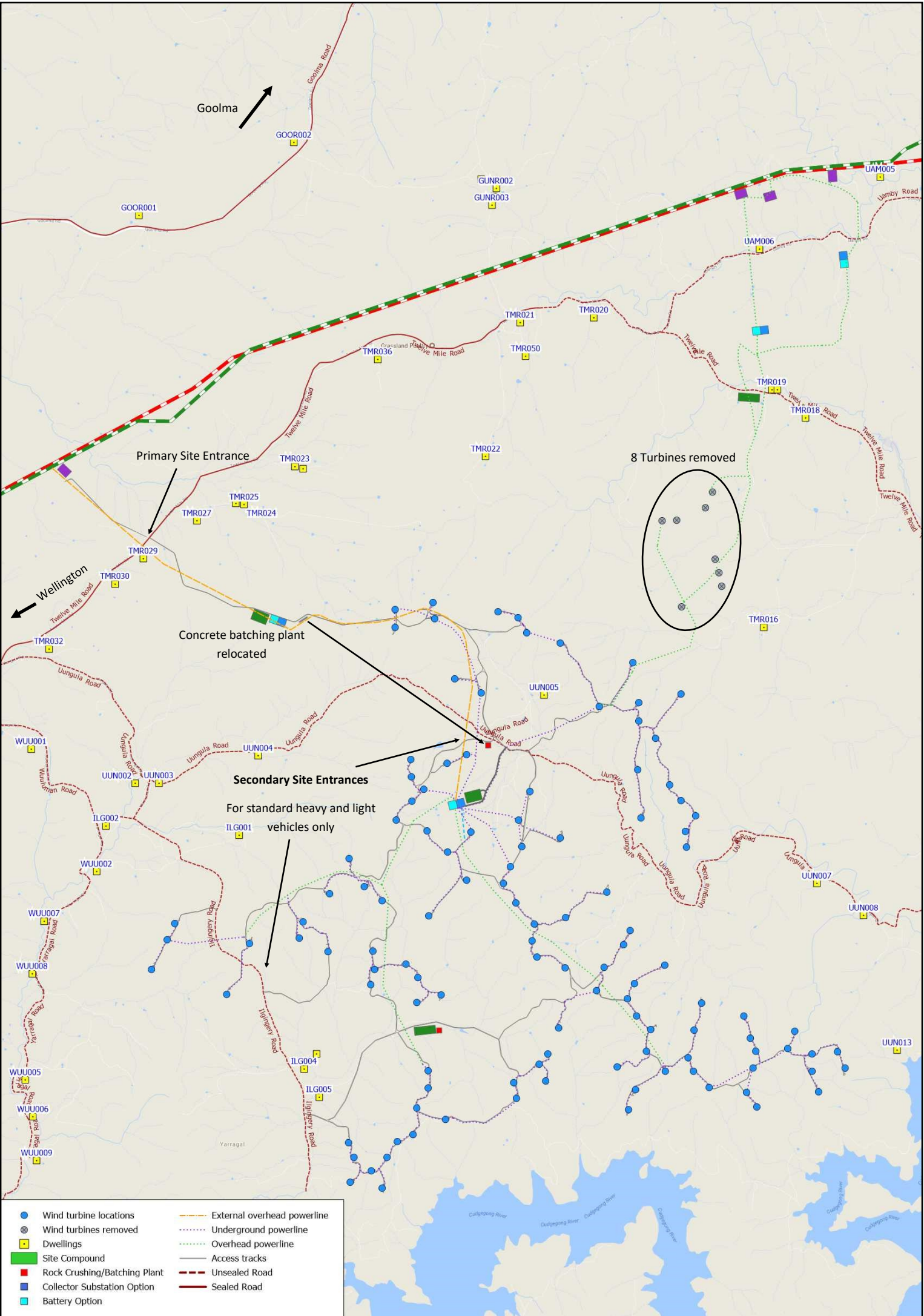
An Environmental Impact Statement (EIS) is currently being prepared for the revised project in accordance with the NSW Wind Energy Framework.

The EIS is expected to be released for public exhibition in late 2019. Public submissions on the EIS are welcomed and the community will be notified once it is released.

A public open day will be held prior to the lodgement of the EIS.

The following technical studies are now being finalised and will be included in the EIS:

- Landscape and visual impact assessment
- Noise and vibration impact assessment
- Biodiversity assessment report
- Cultural heritage impact assessment
- Economic Impact Assessment
- Transport Route Study
- Traffic and transport impact assessment
- Aviation Impact Assessment





CWP Renewables

45 Hunter Street Newcastle NSW

Phone: +61 (02) 4013 4640

Email: info@cwprenewables.com

CWP Renewables is a leading renewable energy developer, owner and asset manager with full project life-cycle expertise. Our team holds a wealth of experience in the renewable energy sector, accumulated through the successful delivery of projects in Europe and Australia.

We develop and own utility-scale renewable energy facilities incorporating wind, solar and storage technologies, oversee project delivery and commissioning, and provide long-term operational asset management services. Our unique approach to own and manage each project from inception through to full operation ensures genuine engagement with all stakeholders at every stage of development.

CWP Renewables has been developing projects in Australia since 2007. Key development activities are coordinated from our offices in Newcastle and Sydney, with asset management services delivered from Canberra.

Our geographically dispersed portfolio of wind and solar projects is unique in the marketplace, combining generation profiles from different technologies and includes storage. This portfolio of aggregated, complimentary and manageable generation can be forecast and sold into the National Energy Market (NEM) or direct to end users, setting us apart from single technology renewable energy project developers in the sector.

Our commitment to delivering combined and complimentary renewable energy generation from our portfolio can be seen in the New England region of NSW, where construction of our 270 MW Sapphire Wind Farm is well underway, and where we are developing a complementary 200 MW solar and battery storage facility. These two projects will combine to deliver low-cost manageable renewable energy generation in to the NEM and/or direct to end use customers.

Find out more about CWP Renewables on our website:
www.cwprenewables.com

Uungula Wind Farm

A proposed wind farm in the central western ranges of NSW.

[Learn More](#)

Creating value & opportunities through renewable energy

Uungula Wind Farm is a proposed development of up to 97 wind turbines and associated infrastructure on agricultural land approximately 14 km east of Wellington, NSW. The site is well suited to wind generation due to its reliable wind resource, low density of rural residential dwellings and proximity to existing transmission infrastructure.

Uungula Wind Farm will play an important role in increasing competition in the energy sector and reducing the market reliance on fossil fuel generation.

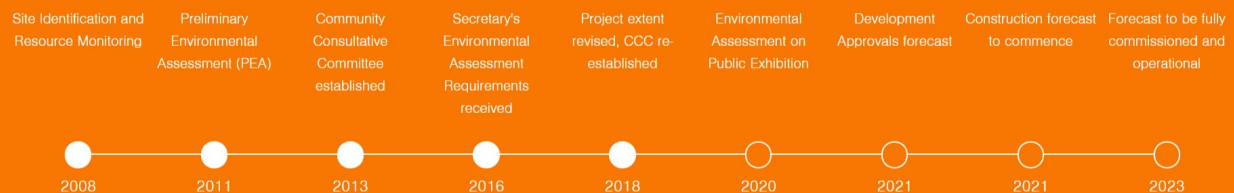
The proposed project capacity is approximately 400 MW, which would generate enough energy for over 170,500 homes* and would save over a million tonnes of greenhouse gas emissions every year.

**(Based on an average NSW household electricity consumption of 7.3 MWh annually.)*

[Learn more](#)

Project Timeline

Key milestones (those proposed in the future are subject to change)



Join Our Mailing List

Subscribe to our mailing list to receive e-Newsletters and updates on the Project.

Name

Email

[Submit](#)

Contact

Matthew Flower
Development Manager – Uungula Wind Farm
Tel: 02 4013 4640
Mob: 0414 136 476
Email: info@uungulawindfarm.com.au

Mailing Address

CWP Renewables
PO Box 1708
Newcastle
NSW 2300

© 2018 Uungula Wind Farm All rights reserved.
Site by Inklab

Project Description

Uungula Wind Farm will generate enough electricity to power 170,500 homes

Uungula Wind Farm is a proposed development of up to 97 wind turbines and associated infrastructure on agricultural land approximately 14 km east of Wellington, NSW. The site is well suited to wind generation due to its reliable wind resource, low density of rural residential dwellings and proximity to existing transmission infrastructure.

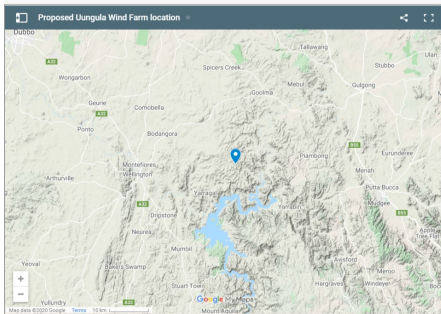
The wind farm was first publicly announced in 2011 and an Environmental Assessment was prepared in 2013. At that stage the project consisted of 249 turbines within the Wellington Council and Mid-Western Regional Council areas. Following extensive community consultation and after a detailed review of the grid network, the project was revised in July 2018 to focus on the western half of the project only, between Wellington and the Cudgong River, and 122 turbines were removed from the plans. In June 2019 a further eight wind turbine generators were removed from the design. This decision was made following extensive stakeholder consultation and will reduce disturbance to the community during construction, ground disturbance, and impacts to visual amenity in the area. The proposed project now consists of up to 97 WTGs, with 12 being removed from the design in early 2020.

A range of turbine sizes are being considered for the Project. The dimensions of the wind turbines anticipated to be on the market in the next few years are currently under review and turbines between 200 m and 250 m (height from blade ground to top of blade tip), with generating capacity expected to be upwards of 4MW, are being considered. Larger turbines enable greater energy generation from a smaller number of machines, lowering the levelized cost of energy.

We are currently undertaking a thorough analysis of all associated Project impacts, particularly visual amenity and continue working closely with neighbours and the community to assess the impacts of the larger turbines, prior to finalising the Project design.

Planning and approval documentation can be found here:

[Planning and Approvals](#)



Location

The proposed Uungula Wind Farm is located between Wellington, Gulugong and Mudgee, north of Lake Burrendong, New South Wales.

The map shows the location of the proposed wind farm

Project Timeline



Benefits

Uungula Wind Farm will play an important role in contributing to the increasing local and global need for renewable projects to tackle the issues of Global Warming and Climate Change. The project will contribute to the local economy of the Wellington region which is experiencing a growth in renewable energy trades and qualifications. This large scale project would provide additional opportunity for construction and operation suppliers in the region.

The project would be operational for approximately 25 years providing around 20 full time jobs as well as numerous supply contracts and service opportunities throughout the project life cycle.

Join Our Mailing List

Subscribe to our mailing list to receive e-Newsletters and updates on the Project.

Name

Email

[Submit](#)

Contact

Matthew Flower
Development Manager – Uungula Wind Farm
Tel: 02 4013 4640
Mob: 0414 136 476
Email: info@uungulawindfarm.com.au

Mailing Address

CWP Renewables
PO Box 1708
Newcastle
NSW 2300

© 2018 Uungula Wind Farm All rights reserved.
Site by Inkiab

Planning and Approvals

Uungula Wind Farm is a State Significant Development.

Uungula Wind Farm was first publicly announced in 2011 and an Environmental Assessment was prepared in 2013 for the project which then consisted of 249 turbines within the Wellington Council and Mid-western Regional Council areas. Due to changes in the energy market at the time, the project Development Application was not formally lodged and the project was transitioned to the State Significant Development process. In December 2016 Secretary's Environmental Assessment Requirements (SEARs) were issued. The Commonwealth Government also issued Environmental Assessment Requirements for the Project to be assessed as a controlled action under the *Environment Protection and Biodiversity Conservation Act 1999*, using the Accredited Assessment approach.

Following a detailed review of the grid network and extensive consultation with landowners and neighbours to the proposed project, a decision to focus on the western half of the project and to remove proposed infrastructure from the Plambong and Yarrabin areas was made. The proposed project will now consist of up to 97 turbines with a generating capacity of approximately 400 MW within the Dubbo Regional Council area.

An Environmental Assessment is to be released for public exhibition in early 2020.

Publicly Available Documents

Publicly available planning documents are available for download here:

- [Preliminary Environmental Assessment](#)
- [Secretary's Environmental Assessment Requirements](#)
- [Matters of National Environmental Significance Environmental Assessment Requirements](#)

Environmental Offsets

Design of the project is being undertaken to avoid impacts to biodiversity and other natural values as much as practicable. Where impacts cannot be avoided, they will be mitigated using best practice adaptive management strategies.

In some cases, impacts may not be practical to avoid or mitigate, and therefore an offset may be required in accordance with NSW and Commonwealth legislation. Environmental offsets may include the establishment of Stewardship Agreements (formerly known as BioBank Agreements) which provide landowners with a guaranteed income stream to permanently conserve and manage land for conservation. The project team is investigating opportunities to establish such agreements in the NSW Central West region.

If you are a landowner interested in establishing an offset or stewardship site, or you believe you have credits which may be suitable for this development, please [contact us to find out more](#).

Join Our Mailing List

Keep up to date with the planning and approvals process by subscribing to our e-newsletter

Name

Email

[Submit](#)

Contact

Matthew Flower
Development Manager – Uungula Wind Farm
Tel: 02 4013 4640
Mob: 0414 136 476
Email: info@uungulawindfarm.com.au

Mailing Address

CWP Renewables
PO Box 1708
Newcastle
NSW 2300

© 2018 Uungula Wind Farm All rights reserved.
Site by Inklab



Community

Genuine Community Engagement

Public consultation for the project commenced in April 2011 during the early stages of planning and feasibility assessment. Consultation with the local community has been underway ever since to inform the public, neighbouring residents, statutory regulators and other stakeholders, and to seek feedback on issues which should be considered during project design.

A Community Consultative Committee (CCC) was established in 2013 to provide a forum for consultation and information sharing between the project and the local community prior to the submission of the Environmental Assessment. Consultation with the local community has been ongoing throughout this time, including direct one-on-one contact with community members and neighbours to the project area. Since receiving updated Secretary's Environmental Assessment Requirements in 2016, the project has undertaken a significant design review.

In a direct response to community feedback, the project was significantly revised in July 2018 to remove all proposed turbines and other infrastructure from the Yarrabin and Pambong areas.

[Latest News](#)

Community Consultative Committee

The purpose of a community consultative committee (CCC) is to provide a forum for open discussion between representatives of the company, the community, the council and other stakeholders on issues directly relating to the project's development, construction, operations, environmental performance and community relations, and to keep the community informed on these matters.

The CCC has been re-established in 2018. If you would like to get in touch with your local CCC member, please contact the Independent Chairperson:

Mr Garry West
garrywest@bigpond.com

CCC minutes are publicly available

- [Meeting #9 Minutes – 6 May 2020](#)
 - [200506 CCC meeting Presentation Slides](#)
- [Meeting #8 Minutes – 24 January 2020](#)
 - [200124 CCC meeting Presentation Slides](#)
- [Meeting #7 Minutes – 4 October 2019](#)
 - [191004 CCC Meeting Presentation Slides](#)
- [Meeting #6 Minutes – 10 May 2019](#)
 - [10/05/19 CCC Meeting Presentation Slides](#)
- [Meeting #5 Minutes – 15 February 2019](#)
 - [15/2/19 CCC Presentation slides](#)
- [Meeting #4 Minutes – 2 November 2018](#)
 - [2/11/18 CCC Presentation slides](#)
- [Meeting #3 Minutes – 23 September 2013](#)
- [Meeting #2 Minutes – 17 June 2013](#)
- [Meeting #1 Minutes – 25 February 2013](#)



Community Survey of Landscape Values

An Environmental Impact Statement (EIS) is currently in preparation and is expected to be released for public exhibition in early 2020. As part of the Community Consultation process, we are seeking feedback from the local community to understand the landscape features and scenic values of the region. The survey was prepared as a simple questionnaire to seek your input. The information will be used to inform the wind farm design and the landscape and visual impact assessment within the EIS.

The survey was prepared to address requirements of the *NSW Wind Energy Guideline (2016)* and the *Wind Energy: Visual Assessment Bulletin* prepared by the NSW Department of Planning and Environment. The survey was available during October and November 2018 and we are currently analysing the responses. Thank you to everyone who took the time to participate, we value your input.

The survey is now closed, however, you can still view the survey questions via the link below:

[Community Survey of Landscape Values](#)

Community Benefits Fund

A Community Benefits Fund is a means to distribute financial contributions from a wind farm to the community which is affected by a development. The fund is typically established using a Voluntary Planning Agreement with the local council and can involve an elected committee which receives applications and disseminates funds according to set criteria. All finances are contributed by the wind farm, the administration is undertaken by council and/or the committee and grants are awarded to recipients based on their worthiness.

CWP Renewables wishes to work with the local community to design the structure of this fund so that the local community impacted by the development benefits most. We consider this a vital instrument to ensuring that those not directly hosting infrastructure will also benefit from the development.



Join Our Mailing List

Newsletters and media releases are used to share information with the community more broadly. If you wish to receive our e-newsletters, please sign up for our mailing list below.

Name

Email

Contact

Matthew Flower
Development Manager – Uungula Wind Farm
Tel: 02 4013 4640
Mob: 0414 136 476
Email: info@uungulawindfarm.com.au

Mailing Address

CWP Renewables
PO Box 1708
Newcastle
NSW 2300

© 2018 Uungula Wind Farm All rights reserved.
Site by InkLab



Uungula Wind Farm is a proposed wind farm to be located between the localities of Wuuluman and Twelve Mile approximately 14 east of Wellington, NSW. The project would include up to 109 wind turbine generators and ancillary infrastructure with a generating capacity of approximately 400 MW. If approved the Project is likely to commence construction toward the end of 2020. Further details are provided on the [Project Description page](#).

An Environmental Impact Statement (EIS) is currently in preparation and is expected to be released for public exhibition in early 2020. As part of the Community Consultation process, we are seeking feedback from the local community to understand the landscape features and scenic values of the region. The survey was prepared to address requirements of the NSW Wind Energy Guideline (2016) and the Wind Energy: Visual Assessment Bulletin prepared by the NSW Department of Planning and Environment.

The survey below was prepared as a simple questionnaire to seek community input. We received many responses and thank everyone who took the time to participate, we value your input. The information will be used to inform the wind farm design and the landscape and visual impact assessment within the EIS.

The survey is now closed and we are currently analysing the results. You can still view the survey questions below.

Name: _____

Which location best describes where you live?

☐ Twelve Mile ☐ Wuuluman
☐ Yarragal ☐ Wellington
☐ Plambong ☐ Yarrabin
☐ Lake Burrendong ☐ Bodangora
☐ Goolma ☐ Mudgee
☐ Elsewhere in NSW ☐ Outside NSW

What is your gender?
☐ Female ☐ Male ☐ Prefer not to say

What is your age group?
☐ 18-29 ☐ 30-44 ☐ 45-60 ☐ 61+ ☐ Prefer not to say

If you live close to the proposal, are you currently involved in the project?
☐ Yes ☐ No ☐ I do not live close by

What do you value most about the local area? (choose one or more)

☐ Community ☐ Local history
☐ Views ☐ Recreation areas
☐ Farming ☐ Bushland areas
☐ Employment opportunities

What landscape features do you think have the most scenic value in the local area? (choose one or more)

☐ Lake Burrendong
☐ Wellington Caves
☐ Mount Arthur Reserve
☐ Bushland areas
☐ Rocky hills and outcrops
☐ Farmland and rolling hills
☐ Local rivers and creeks

Do you support renewable energy investment in your region?
☐ Yes ☐ No ☐ Indifferent

What views or landscape characteristics in the region and local area are important to you? (feel free to draw on the map on the previous page)

What impact do you think the Uungula Wind Farm would have on the character of the local landscape?

☐ Positive ☐ Neutral ☐ Negative
☐ I haven't decided

Which statement best describes your visual relationship to the proposed wind farm (tick all that apply)

☐ I may see the wind farm from my house
☐ I may see the wind farm from my property
☐ I may see the wind farm from where I work
☐ I live in the area where the wind farm is located but do not believe I will see the wind farm
☐ I may see the wind farm from a place of recreation

Please rank how much impact you believe the wind farm will have on the local area:

☐ Low impact - the wind farm will impact few views and landscape areas
☐ Medium impact - the wind farm will impact some views and landscape areas
☐ High impact - the wind farm will change most local views and landscape areas

Do you think the proposed wind farm is well situated?
☐ Yes ☐ No ☐ Indifferent

Can you see the Bodangora Wind Farm from your house?
☐ Yes ☐ No ☐ Unsure

Please post this form to:

Uungula Wind Farm
CWP Renewables
PO Box 1708
Newcastle NSW 2300

Join Our Mailing List

Subscribe to the newsletter to receive email updates about the project

Name

Email

Submit

Contact

Matthew Flower
 Development Manager – Uungula Wind Farm
 Tel: 02 4013 4640
 Mob: 0414 136 476
 Email: info@uungulawindfarm.com.au

Mailing Address

CWP Renewables
 PO Box 1708
 Newcastle
 NSW 2300

© 2018 Uungula Wind Farm All rights reserved.
 Site by Inklab

News

Newsletter: Uungula Wind Farm Community Newsletter June 2019 12 June 2019

This newsletter provides the local community with an update on the proposed Uungula Wind Farm, which is a proposed development on agricultural land approximately 14 km east of Wellington, NSW. The...

[Read More](#)

Newsletter: Uungula Wind Farm Community Survey Reminder Nov 2018 15 November 2018

Community Survey of Landscape Values Reminder to submit your feedback The survey will close on November 30 CWP Renewables is currently preparing the Environmental Impact Statement for the proposed Uungula...

[Read More](#)

Newsletter: Uungula Wind Farm Community Update And Survey Oct 2018 19 October 2018

As part of the Community Consultation process, we are seeking feedback from the local community to understand the important landscape features and scenic values of the region. The survey (via...

[Read More](#)

Newsletter: Uungula Wind Farm Community Update Sept 2018 11 September 2018

An Environmental Impact Statement (EIS) is currently being prepared by CWP Renewables in accordance with the NSW Wind Energy Framework (DPE 2016) Visual Assessment Bulletin and Noise Assessment Bulletin. The...

[Read More](#)

Newsletter: Uungula Wind Farm Community Update July 2018 20 July 2018

Over the past eighteen months, CWP Renewables has been reviewing plans for the development of Uungula Wind Farm in consultation with the community. The wind farm was first publicly announced...

[Read More](#)

Newsletter: Uungula Wind Farm Community Update May 2018 19 May 2018

This newsletter provides the local community with an update on plans for the development of Uungula Wind Farm. Uungula Wind Farm is a proposed renewable energy project located on agricultural...

[Read More](#)

Newsletter: Uungula Wind Farm community update Dec 2017 1 December 2017

Uungula Wind Farm is a proposed renewable energy project located on agricultural land near Twelve Mile and Piampong, approximately 14 km east of Wellington and 20 km north-west of Mudgee...

[Read More](#)

Media release: Final Stages of Environmental Assessment 1 May 2013

Wind Prospect CWP is in the final stages of preparing an Environmental Assessment (EA) for the proposed Uungula Wind Farm. The wind farm consists of up to 249 potential wind...

[Read More](#)

Project Update 15 April 2013

Wind Prospect CWP is assessing the potential for a wind farm on rural land between Wellington, Goolma, Gulgong and Mudgee, north of Lake Burrendong, New South Wales. The wind farm...

[Read More](#)

Media Release: Wind Farm Open Days and Project Update 1 February 2012

Wind Prospect CWP Pty Ltd will be holding two Public Open Days later this month for their respective wind farm developments in the region. On Tuesday 28th February a Public...

[Read More](#)

Contact

Matthew Flower
Development Manager – Uungula Wind Farm
Tel: 02 4013 4640
Mob: 0414 136 476
Email: info@uungulawindfarm.com.au

Mailing Address

CWP Renewables
PO Box 1708
Newcastle
NSW 2300



Resources

This page provides useful links and resources related to the project and renewable energy in general.



The Clean Energy Council

The Clean Energy Council is the peak body for the clean energy industry in Australia. CWP Renewables is a sponsoring member of the CEC.

[Learn More](#)



The Clean Energy Regulator

The Clean Energy Regulator is a Government body responsible for accelerating carbon abatement for Australia through the administration of the National Greenhouse and Energy Reporting scheme, Renewable Energy Target and the Emissions Reduction Fund.

[Learn More](#)



Planning & Environment

NSW Wind Energy Guideline

The NSW Wind Energy Guideline provides the community, industry and regulators with guidance on the planning framework for the assessment of large-scale wind energy development proposals that are State significant development (SSD).

[Learn More](#)



Planning & Environment

Review of the Impact of Wind Farms on Property Values

The NSW Office of Environment and Heritage (OEH) commissioned Urbis to undertake an investigation into the potential impact of wind farm developments on property prices in NSW. This study follows on from the 2009 NSW Valuer-General's assessment of the impact of wind farms on property values.

[Learn More](#)



NSW Wind Farm Greenhouse Gas Savings Tool

The NSW wind farm greenhouse gas savings tool multiplies the output from a specific wind farm by the emissions intensity of the power supplied locally in the National Electricity Market (NEM).

[Learn More](#)



Australian Government

National Wind Farm Commissioner

The Commissioner is an independent role appointed by the Australian Government, reporting to the Minister for the Environment and Energy. The Commissioner's role is to receive and refer complaints from concerned community residents about wind farms, as well as promote best practices for industry and government to adopt in regard to the planning and operation of wind farms.

[Learn More](#)



The United Nations Framework Convention on Climate Change

The secretariat provides technical expertise and assists in the analysis and review of climate change information reported by Parties and in the implementation of the Kyoto mechanisms. It also maintains the registry for Nationally Determined Contributions (NDC) established under the Paris Agreement, a key aspect of implementation of the Paris Agreement.

[Learn More](#)



The International Renewable Energy Agency (IRENA)

The International Renewable Energy Agency (IRENA) is an intergovernmental organisation that supports countries in their transition to a sustainable energy future, and serves as the principal platform for international cooperation, a centre of excellence, and a repository of policy, technology, resource and financial knowledge on renewable energy.

[Learn More](#)



Smart Energy Council

Smart Energy Council is the peak body for the solar, storage and smart energy in Australia. A not-for-profit membership organisation committed to clean, efficient, cheap and smart energy solutions for all Australians. Membership is comprised of individual, installer, small and large businesses from across Australia and internationally.

[Learn More](#)

Contact

Matthew Flower
Development Manager – Uungula Wind Farm
Tel: 02 4013 4640
Mob: 0414 136 476
Email: info@uungulawindfarm.com.au

Mailing Address

CWP Renewables
PO Box 1708
Newcastle
NSW 2300

© 2018 Uungula Wind Farm All rights reserved.
Site by Inklab

Contractors

Contractor Enquiries

Uungula Wind Farm is currently in the early stages of development and construction will not be scheduled until such time as development approvals are granted. Local contractors and service providers are encouraged to register their interest for supplying goods and services during construction and operation of the wind farm, using the form below.

Company name*

Contact name*

Email*

Phone*

Address line 1

Address line 2

ZIP / Postal code

Website

Area of specialisation*

Your distance from proposed site *

☐ Less than 50km
☐ 50-100km away
☐ Over 100km away

Relevant experience*

Any other information?

How did you heard about the project?

Supply Contracts and Services

Wind farm construction is a complex business. The construction effort requires a wide range of technical, trades and skills and the project relies heavily on local traders and industry to bring these projects to fruition.

Some of the typical supply and service contracts which are required for wind farm construction include:

- Accommodation providers
- Blasting Services
- Building contractor
- Civils and Earthmoving Services
- Cleaning for Main Construction Compound
- Concrete Aggregate Supply
- Concrete Placing and Finishing
- Concrete Supply and Onsite Batching
- Construction equipment – hire sales and maintenance
- Container Hire
- Crane Hire
- Diesel Supply
- Earth Moving and Construction Equipment
- Electrical Installation
- Electrical Wholesalers
- Engineering Services including Steel Fabricated Warehouse
- Environmental Consultants
- Events functions and catering facilities and providers
- Fencing Contractors
- Fire alarm and fire extinguisher services and safety testing
- Geotechnical Testing
- Grout product suppliers and installers
- High voltage commissioning and safety testing
- Inground trenching and cable installation services
- Landscaping and site remediation services
- Onsite sewerage treatment plant and/or pump out services
- Overhead transmission line construction 33kV, 132 kV and 330kV
- Plumbing Works
- Reinforcement installation contractors
- Reinforcing steel suppliers
- RMS accredited road constructor
- Sand suppliers
- Scrap metal dealers
- Sign writers and signage suppliers
- Telecommunications services
- Temporary building hire
- Training – occupational health and first aid
- Water carting services

We strongly encourage those suppliers interested in participating in construction of Uungula Wind Farm to register their interest using the form above.



Contact

Matthew Flower
Development Manager – Uungula Wind Farm
Tel: 02 4013 4640
Mob: 0414 136 476
Email: info@uungulawindfarm.com.au

Mailing Address

CWP Renewables
PO Box 1708
Newcastle
NSW 2300

© 2018 Uungula Wind Farm All rights reserved.
Site by Inklab

About Us



CWP Renewables is a leading renewable energy developer, owner and asset manager with full project life-cycle expertise. Our team holds a wealth of experience in the renewable energy sector, accumulated through the successful delivery of projects in Europe and Australia.

We develop and own utility-scale renewable energy facilities incorporating wind, solar and storage technologies, oversee project delivery and commissioning, and provide long-term operational asset management services. Our unique approach to own and manage each project from inception through to full operation ensures genuine engagement with all stakeholders at every stage of development.

CWP Renewables has been developing projects in Australia since 2007. Key development activities are coordinated from our offices in Newcastle and Sydney, with asset management services delivered from Canberra.

Uungula Wind Farm is part of the portfolio of renewable energy investments owned by CWP Renewables.

[CWP Renewables website](#)[CWP Renewables on Twitter](#)[CWP Renewables on LinkedIn](#)

Renewable Energy Portfolio

Our geographically dispersed portfolio of wind and solar projects is unique in the marketplace, combining generation profiles from different technologies and includes storage. This portfolio of aggregated, complementary and manageable generation can be forecast and sold into the National Energy Market (NEM) or direct to end users, setting us apart from single technology renewable energy project developers in the sector.

Our commitment to delivering combined and complementary renewable energy generation from our portfolio can be seen in the New England region of NSW, where a 200 MW hybrid solar and battery power facility is planned to be co-located with the operating 270 MW Sapphire Wind Farm. The project will connect wind and solar generation with battery storage, expanding the credentials of New South Wales' New England region as a leader in renewable energy.

This hybrid project will combine to deliver low-cost manageable renewable energy generation into the NEM and direct to end-use customers.

Join Our Mailing List

Subscribe to our mailing list to receive e-Newsletters and updates on the Project.

Name

Email

[Submit](#)

Contact

Matthew Flower
Development Manager – Uungula Wind Farm
Tel: 02 4013 4640
Mob: 0414 136 476
Email: info@uungulawindfarm.com.au

Mailing Address

CWP Renewables
PO Box 1708
Newcastle
NSW 2300

© 2018 Uungula Wind Farm All rights reserved.
Site by Inklab

Contact us

Contact

Matthew Flower
Development Manager – Uungula Wind Farm
Tel: **02 4013 4640**
Email: info@uungulawindfarm.com.au

Mailing Address

CWP Renewables
PO Box 1708
Newcastle
NSW 2300

To enquire about the Uungula Wind Farm, please fill out the contact form below.

Your Name*

Your Email*

Subject*

Your Enquiry*

Send

Contact

Matthew Flower
Development Manager – Uungula Wind Farm
Tel: 02 4013 4640
Mob: 0414 136 476
Email: info@uungulawindfarm.com.au

Mailing Address

CWP Renewables
PO Box 1708
Newcastle
NSW 2300

© 2018 Uungula Wind Farm All rights reserved.
Site by Inklab