

Reflectivity - Façade Design

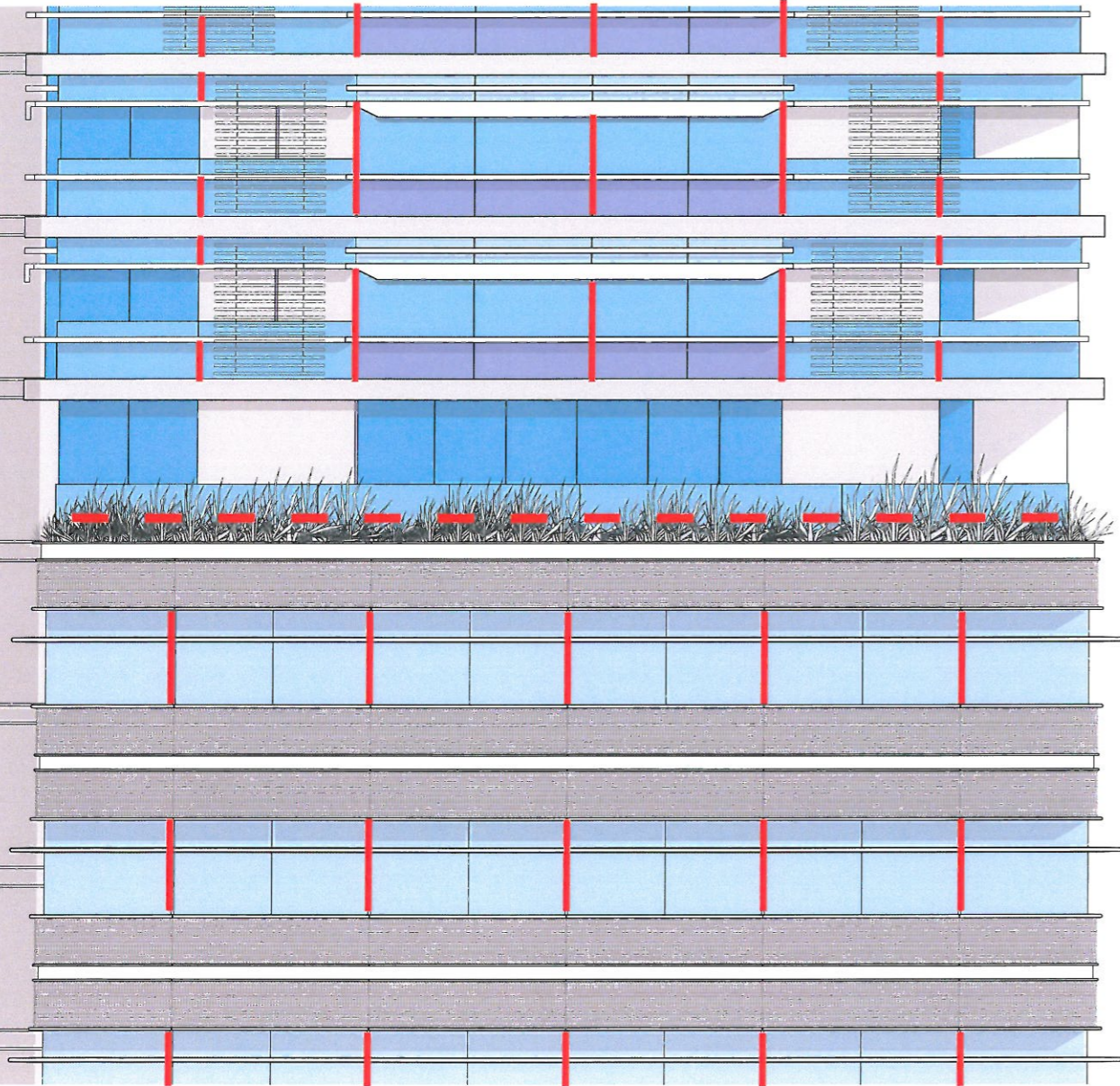
Revised Tower Façade Design - North Facade Glare

Response to Glare issues on the Commercial and Residential North Facade

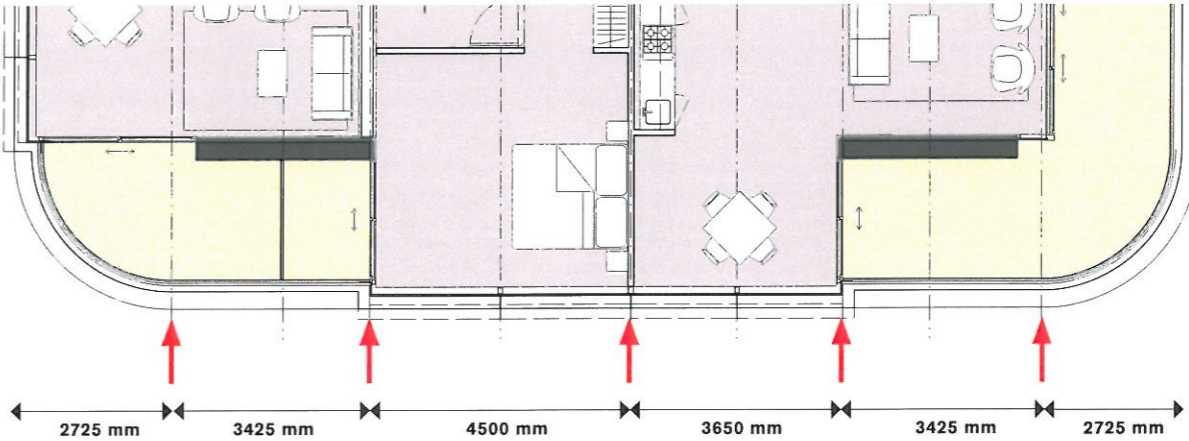
On the northern façade, vertical fin elements to glazing have been recommended to intercept morning and afternoon solar rays reflecting onto Broadway (see Solar Reflectivity Assessment 4946 for Frasers Broadway, submitted in March 2009 by CPP).

Please also refer to Solar Reflectivity Assessment information by Consultants

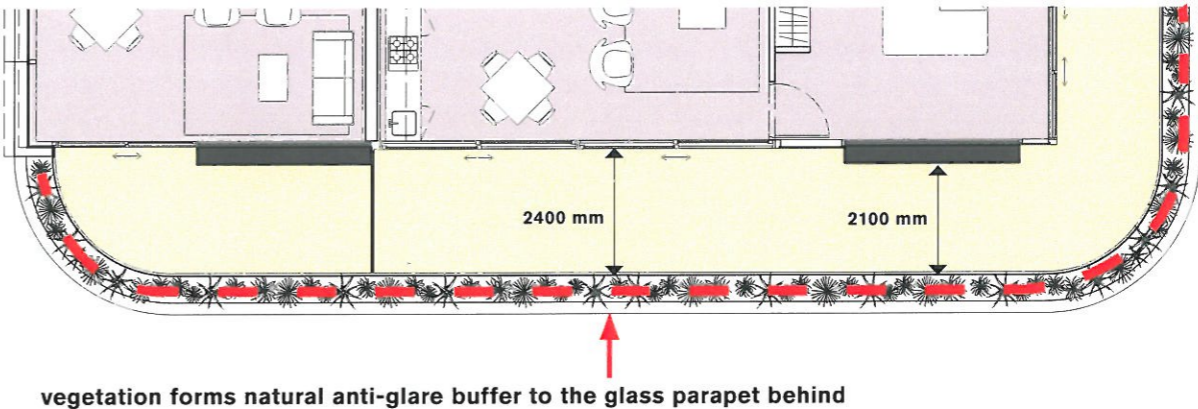
B4N - Commercial & Residential North Elevation, NTS



Typical Plan of North Facing Residential Facade, NTS



Typical Plan of North Facing Residential Neck Facade, NTS



Typical Plan of North Facing Commercial Facade, NTS

