

Façade Design

Revised Tower Façade Design - Privacy in Building Slot

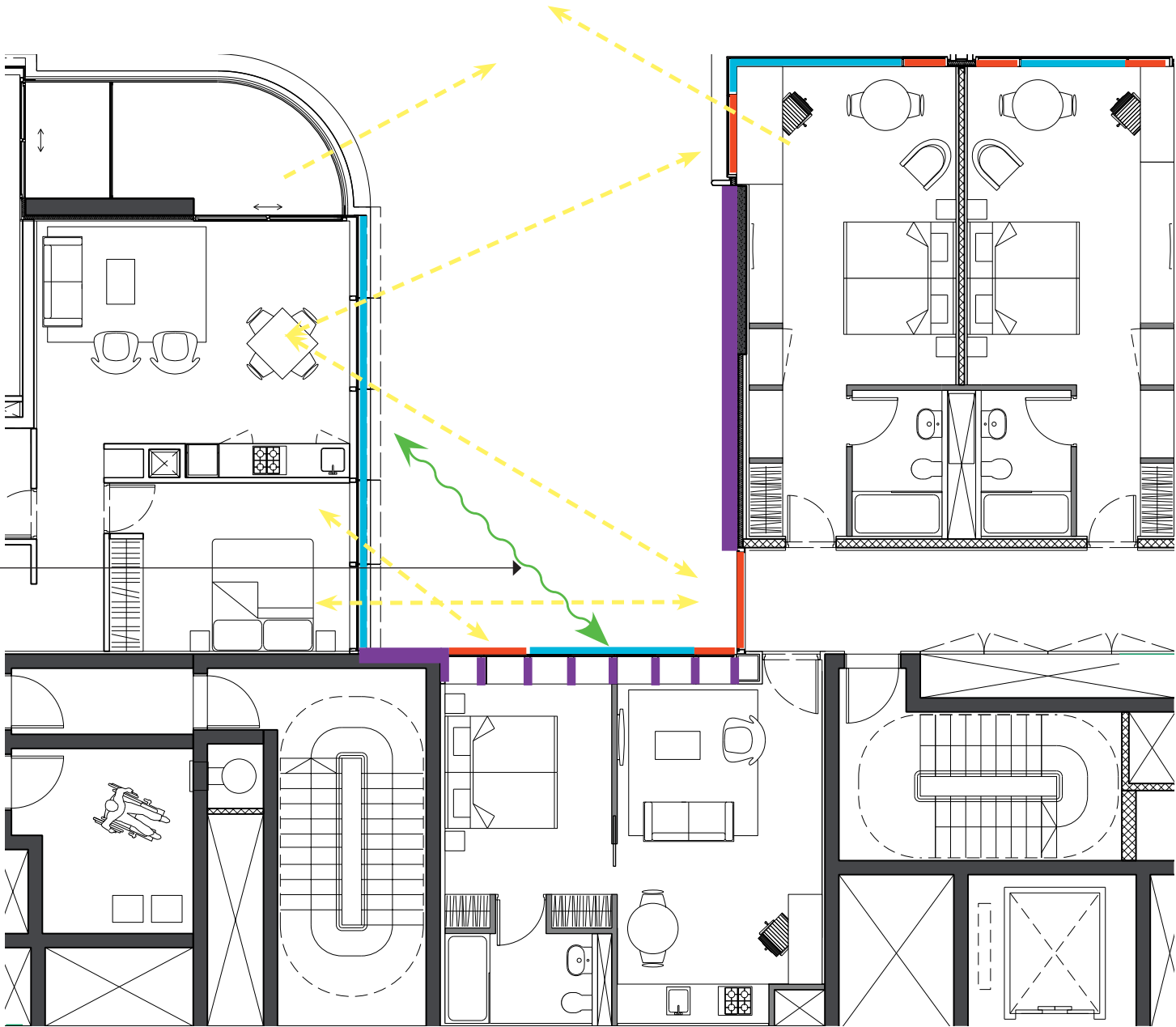
Response to Privacy issues in the slot between both building parts

Many different functions and cladding identities have been combined in the slot between both towers. In order to prevent overlooking issues between all these functions, some strategic decisions have been made in the design of all affected typologies.

The main strategy was to minimize the impact on the residential / commercial facade itself so especially the residential unit on this NE corner could maintain a maximum of views out and unobstructed daylight access. Therefore focussing privacy measures on the Hotel Suites in the Slot (H3) and the hotel corridor facade (H2).

Both cladding types will have full height textured glazing panels with a high level of privacy treatment in the most crucial areas as to minimize direct negative effects. Additionally, the Hotel room in the slot also has an increased cladding depth and additional vertical fins to focus its views straight ahead and prevent any overlooking possibilities towards the immediate residential / commercial areas.

Most problematic overlooking issues
(see next page)



- Clear / Vision glass
- Textured Glass (high privacy factor)
- Solid Facade / fin walls
- good privacy relationship