

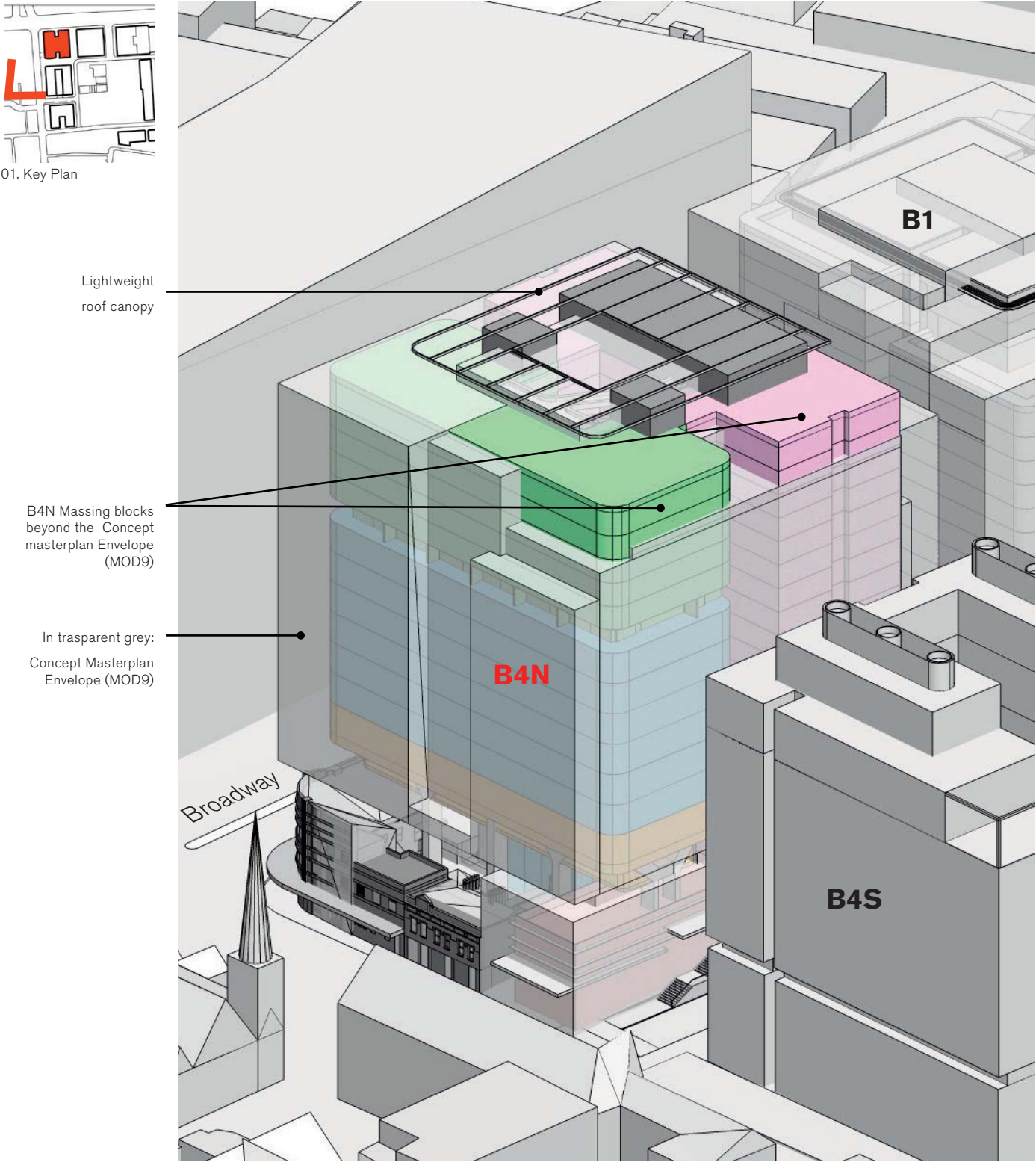
This chapter includes additional information to support the contents of this report. It includes:

- A1.** Massing comparison between the Concept Masterplan envelope MOD9 and B4N SSDA scheme.
- A2.** Massing diagrams illustrating additional and not used volumes in relation to MOD9 Concept masterplan envelope.
- A3.** Shadow studies highlighting the impact of B4N onto the main park and adjacent streets.
- A4.** Massing study, comparison between B4N SSDA scheme with and without exceeding volumes on the southern elevation.

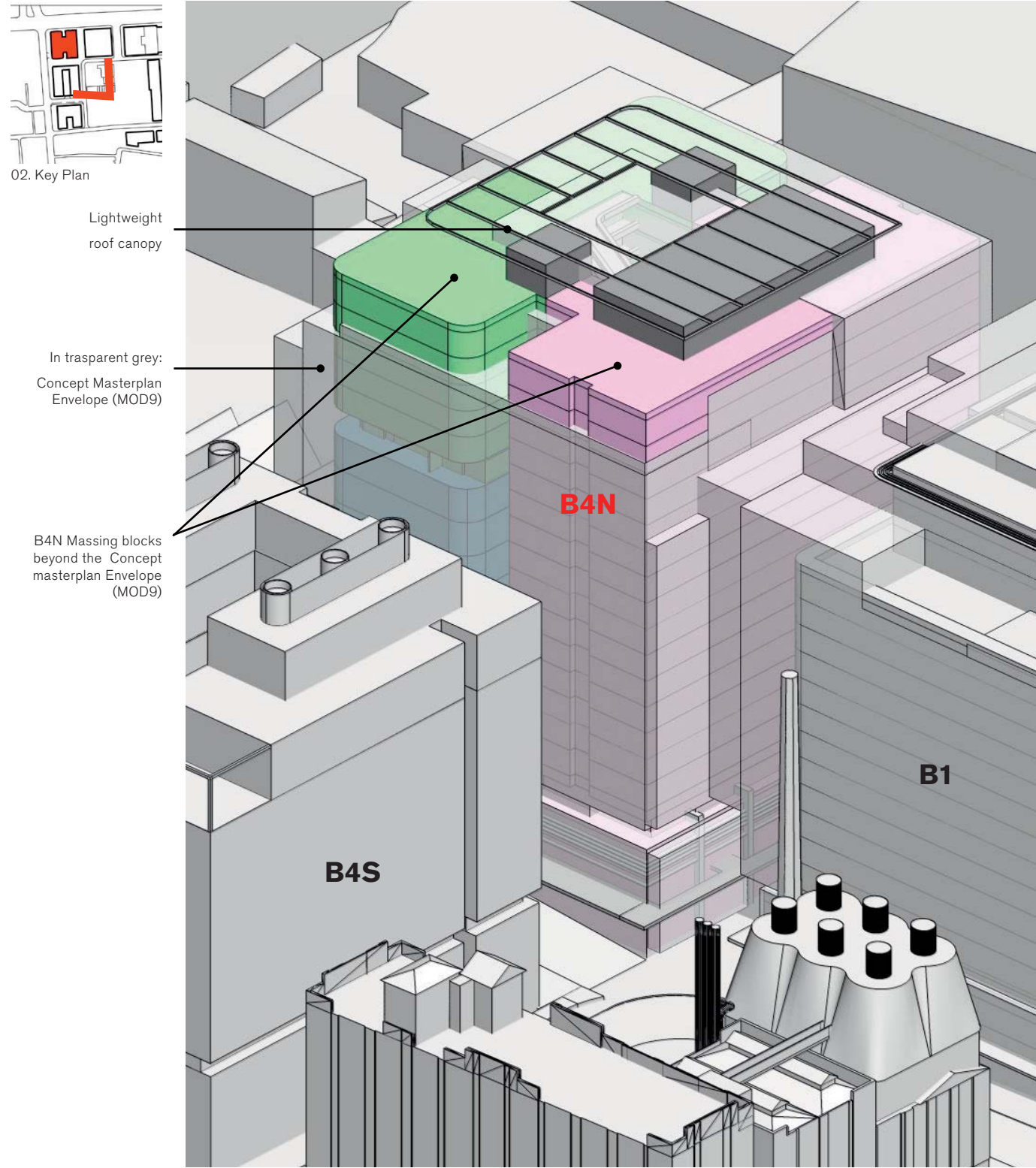
# Massing comparison

Comparison between the Concept Masterplan Envelope (MOD9) and B4N SSD Application scheme.

A.1



01. Aerial - South-west view

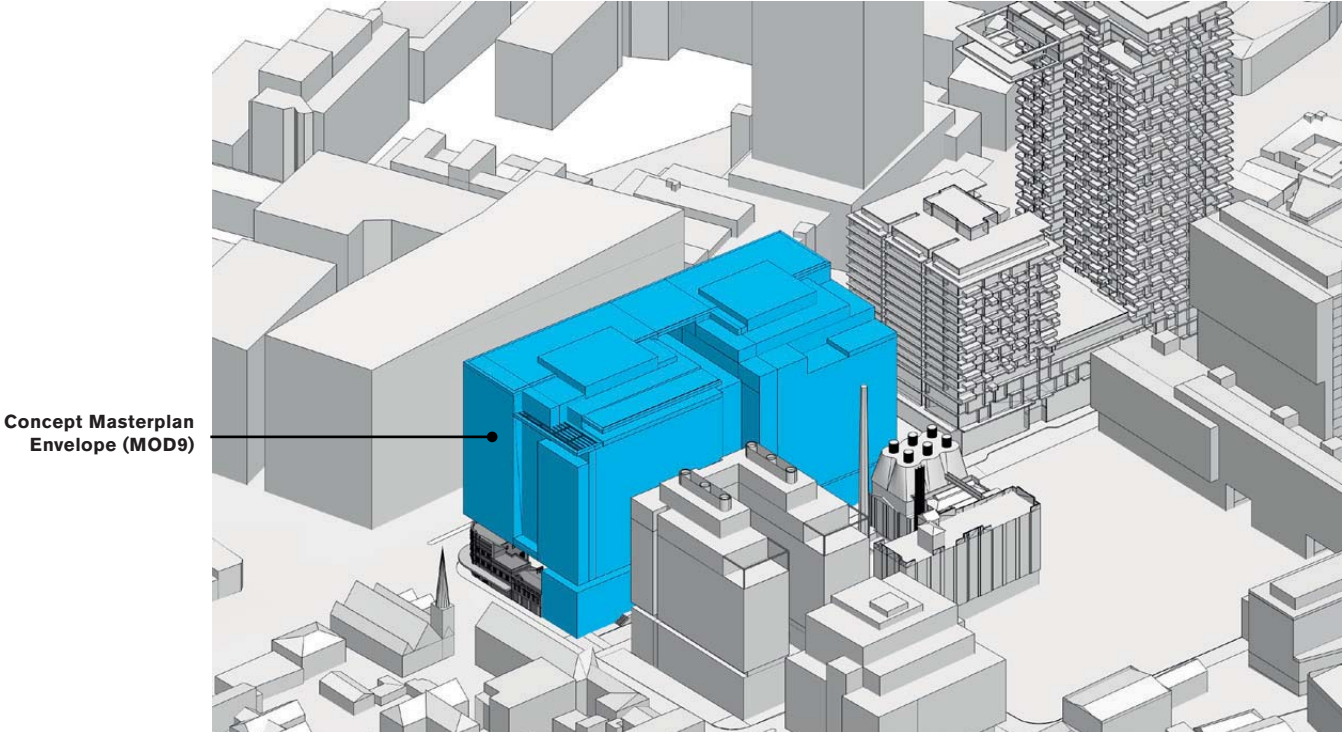


02. Aerial - South-east view

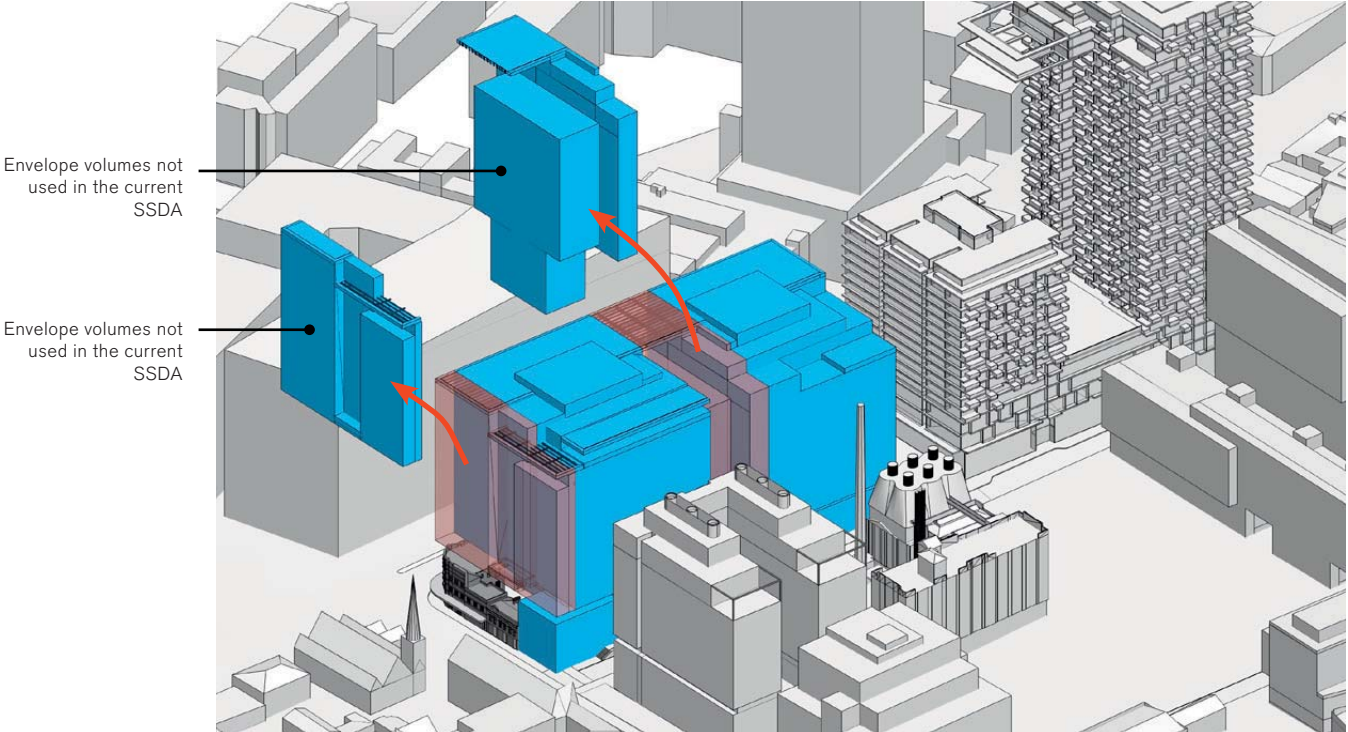


Massing Comparison

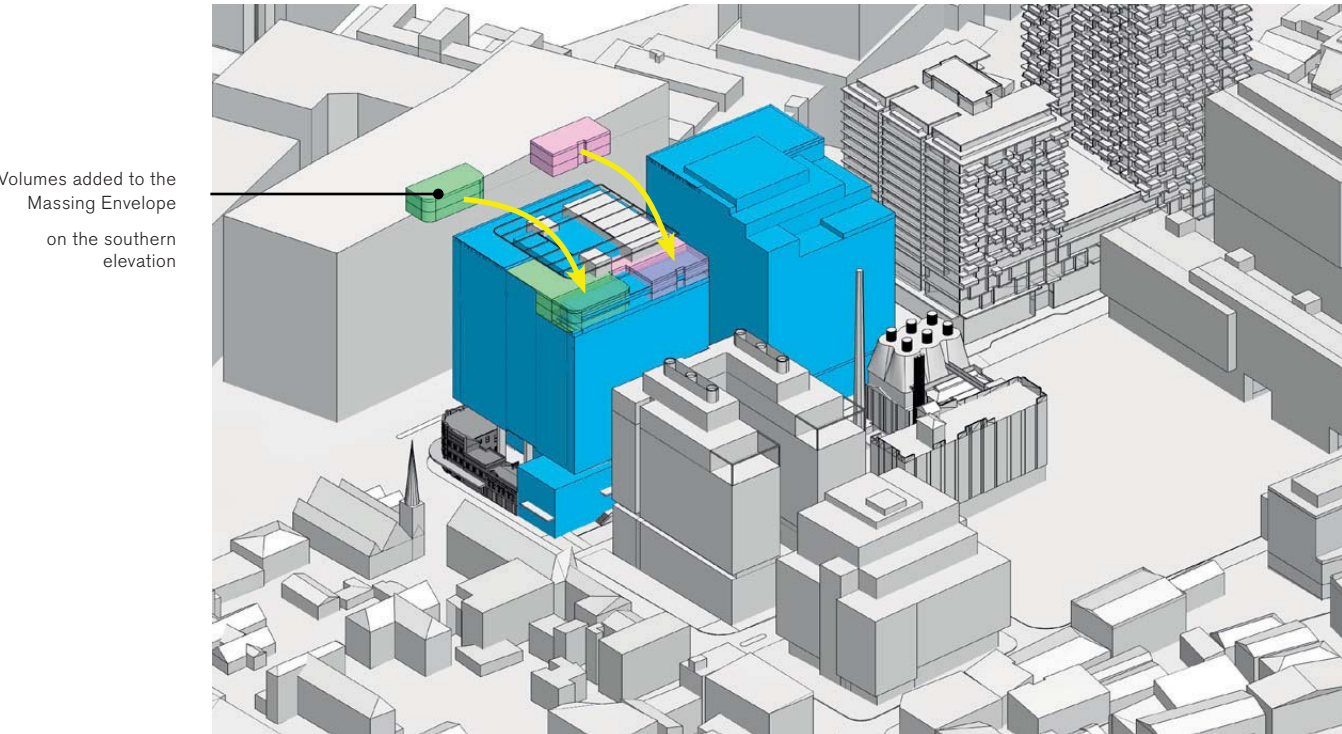
Massing comparison between the Concept Masterplan Envelope (MOD9) and B4N SSD Application scheme.



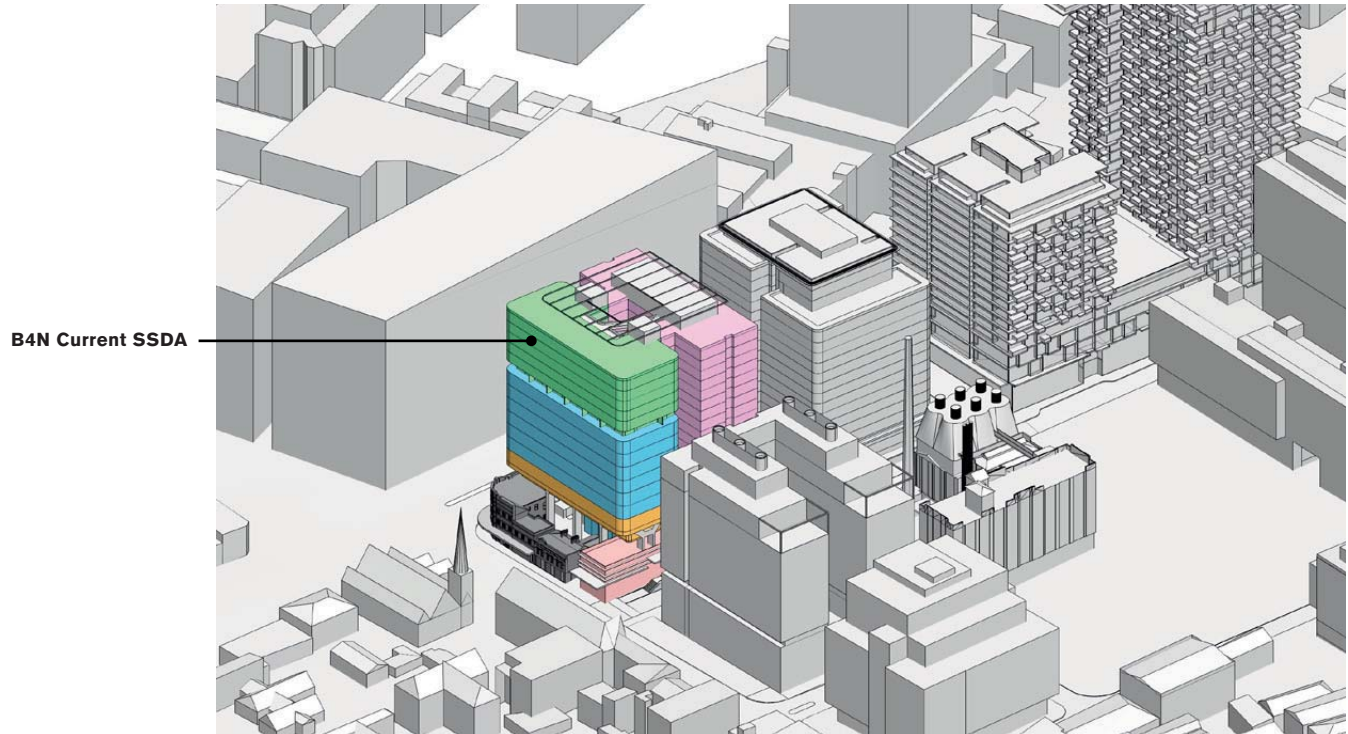
01. Concept Masterplan Envelope (MOD8)



02. Deleted volumes



03. Added volumes

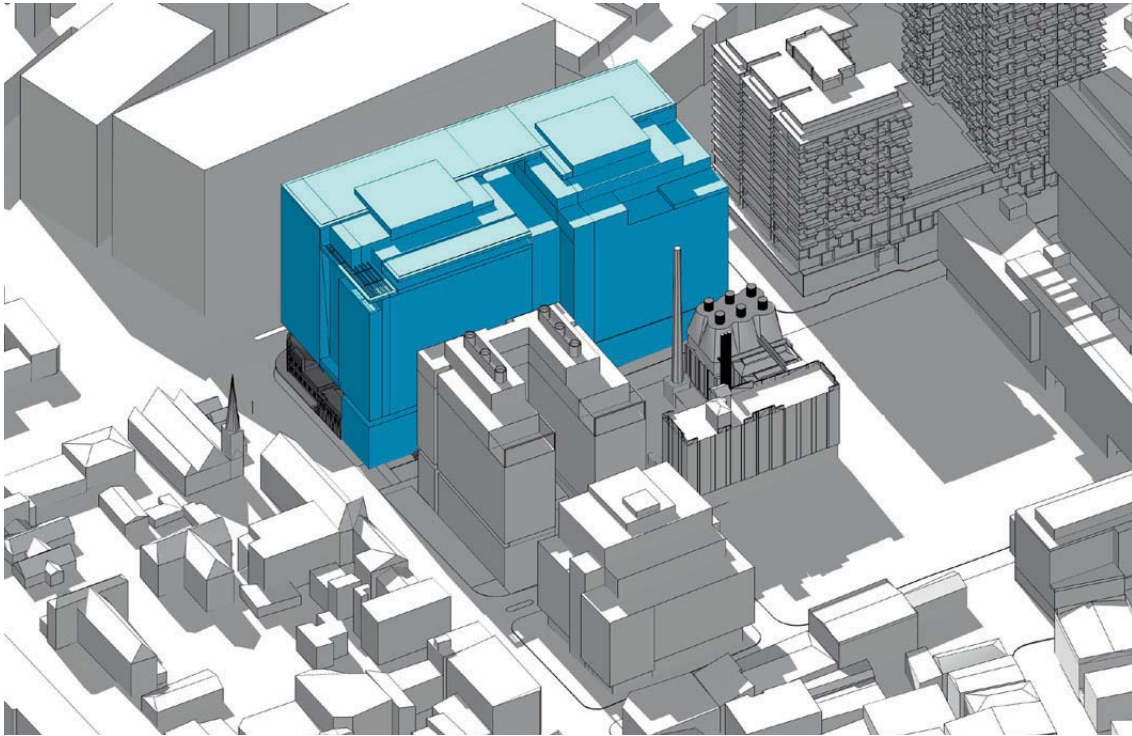


04. B4N massing SSD Application scheme

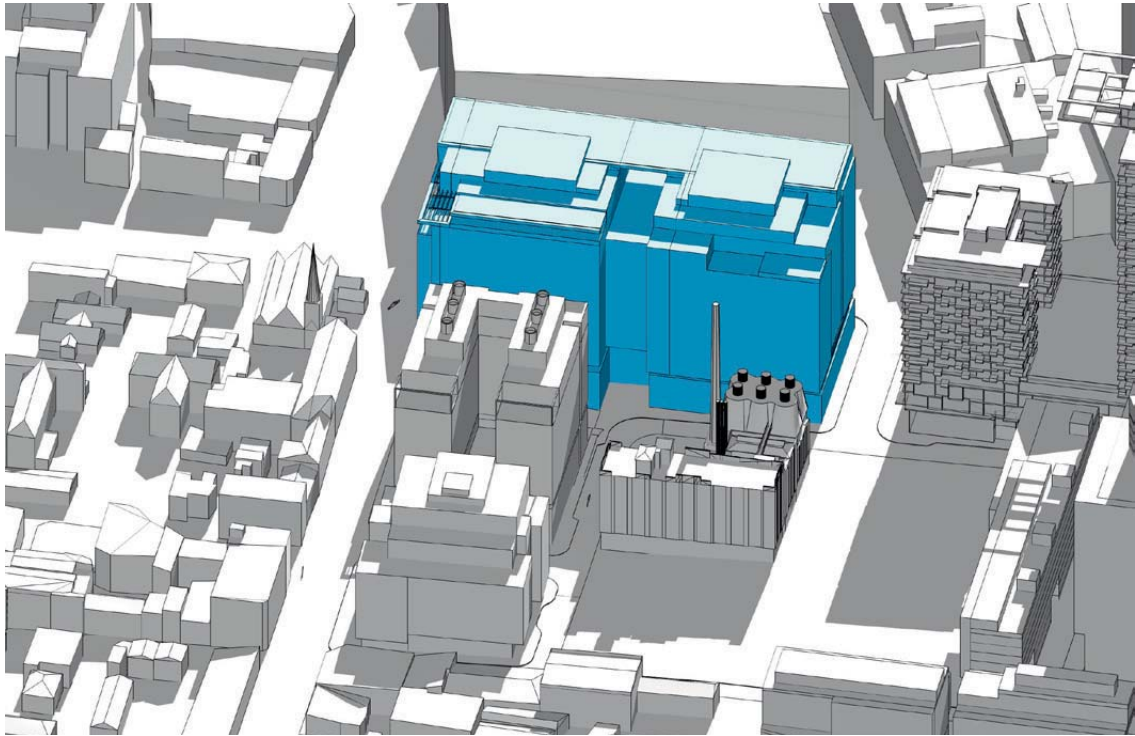


**Shadow study**  
Comparison between the Concept Masterplan Envelope (MOD9) and  
B4N SSD Application scheme - 21st June, 12:00 PM

- Shadow line of Concept Plan MOD9
- B4N Additional SUNLIGHT to Concept Plan in comparison with Concept Plan MOD9
- B4N Additional SHADOW to Concept Plan in comparison with Concept Plan MOD9



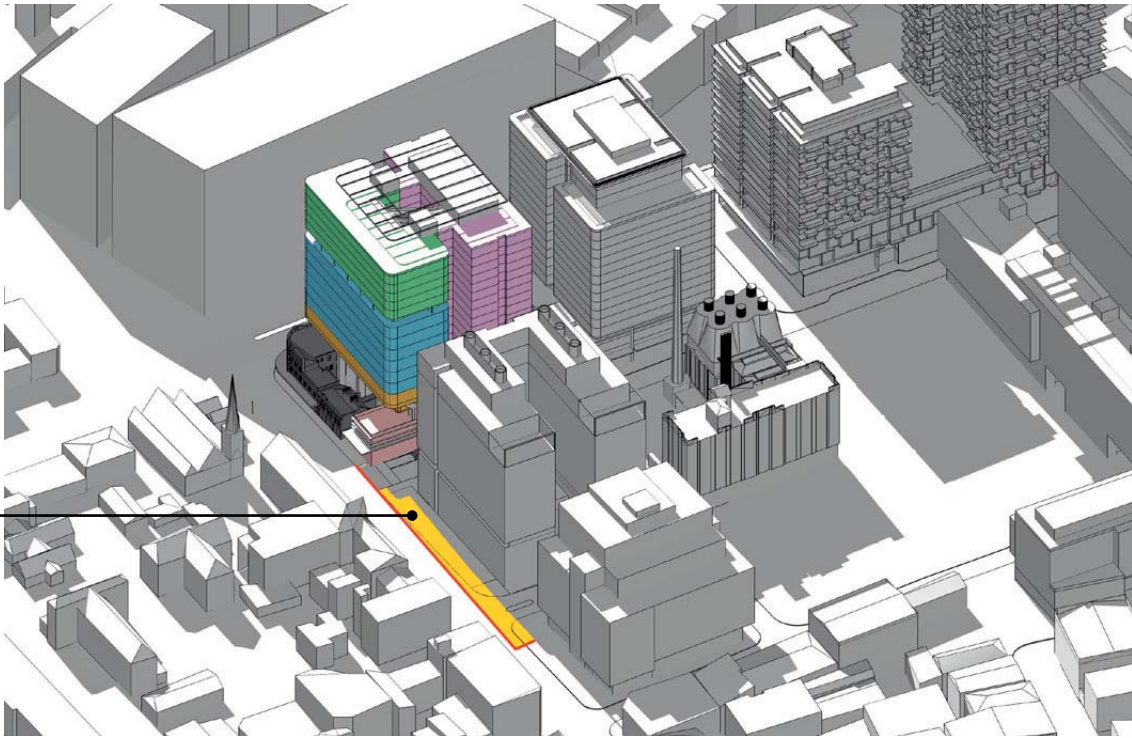
Masterplan Envelope as per S75W Amendments (MOD9) - 21 June 12.00



Masterplan Envelope as per S75W Amendments (MOD9) - 21 June 12.00 PM

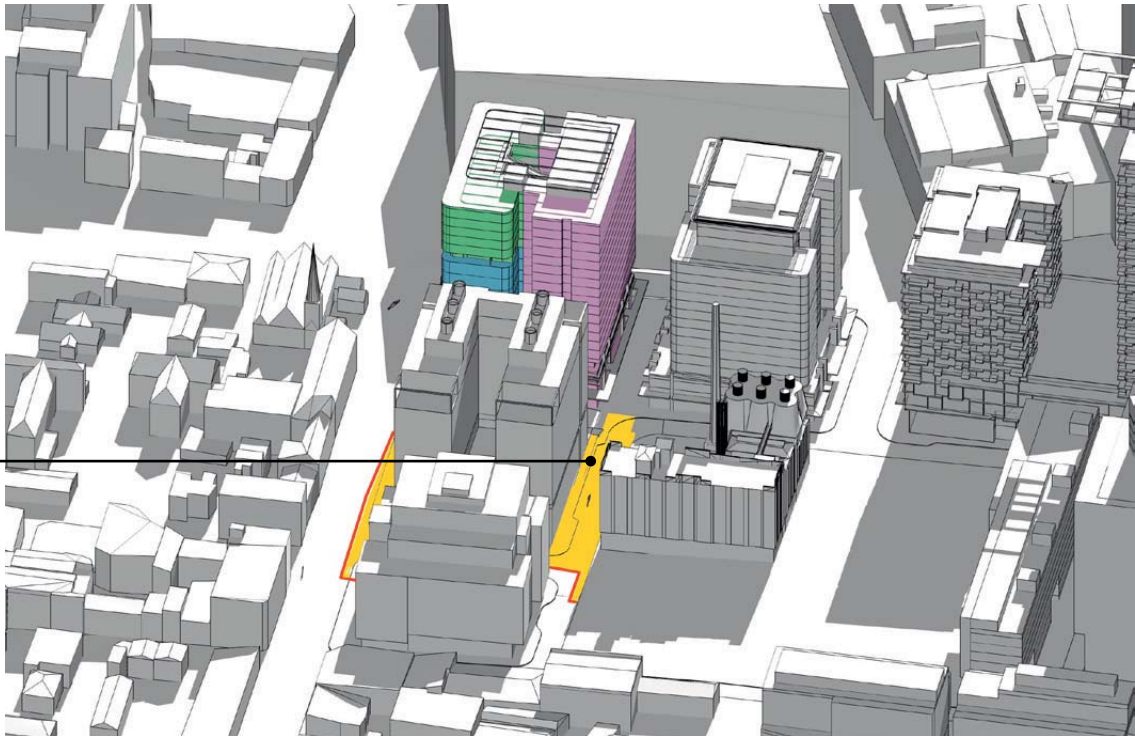
Additional sunlight to masterplan resulting from a revised Block 4N footprint.

The B4N western facade has been set back to allow a better sunlight penetration into the backyard area of the Australin hotel and along Abercrombie street.



Block 4N and 1 as per SSD Application - 21 June 12.00 PM

Additional sunlight to masterplan resulting from the deletion of the bridge link between Block 4N and Block1



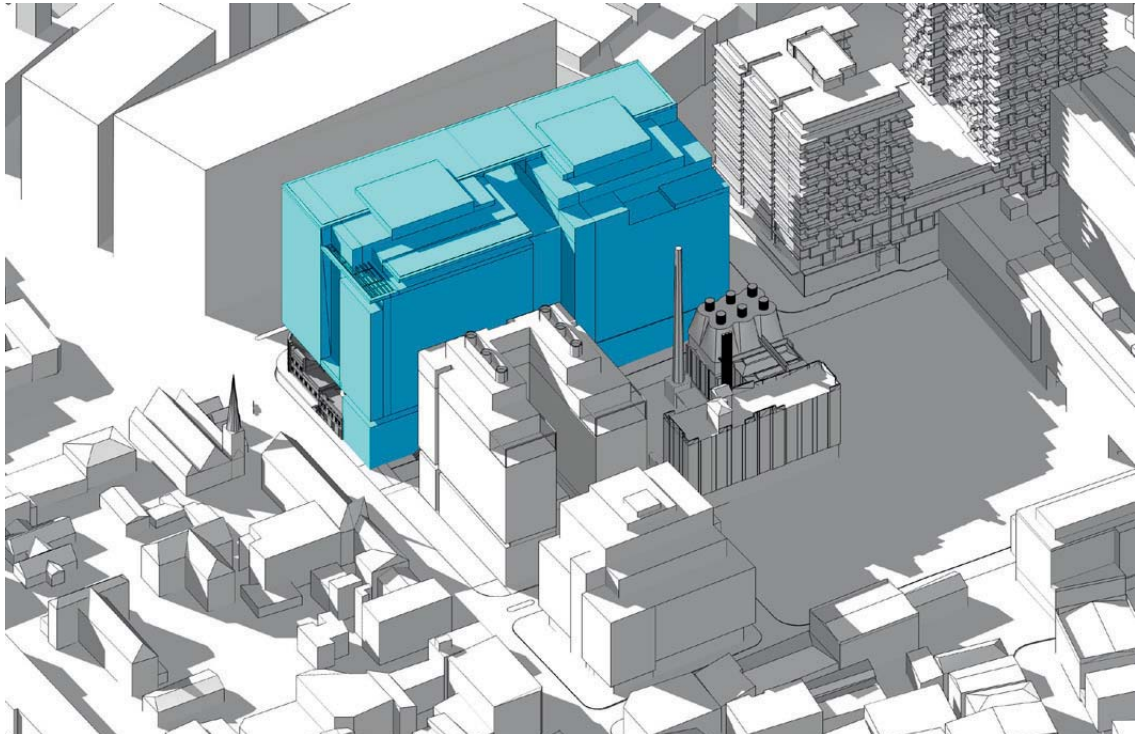
Block 4N and 1 as per SSD Application - 21 June 12.00 PM



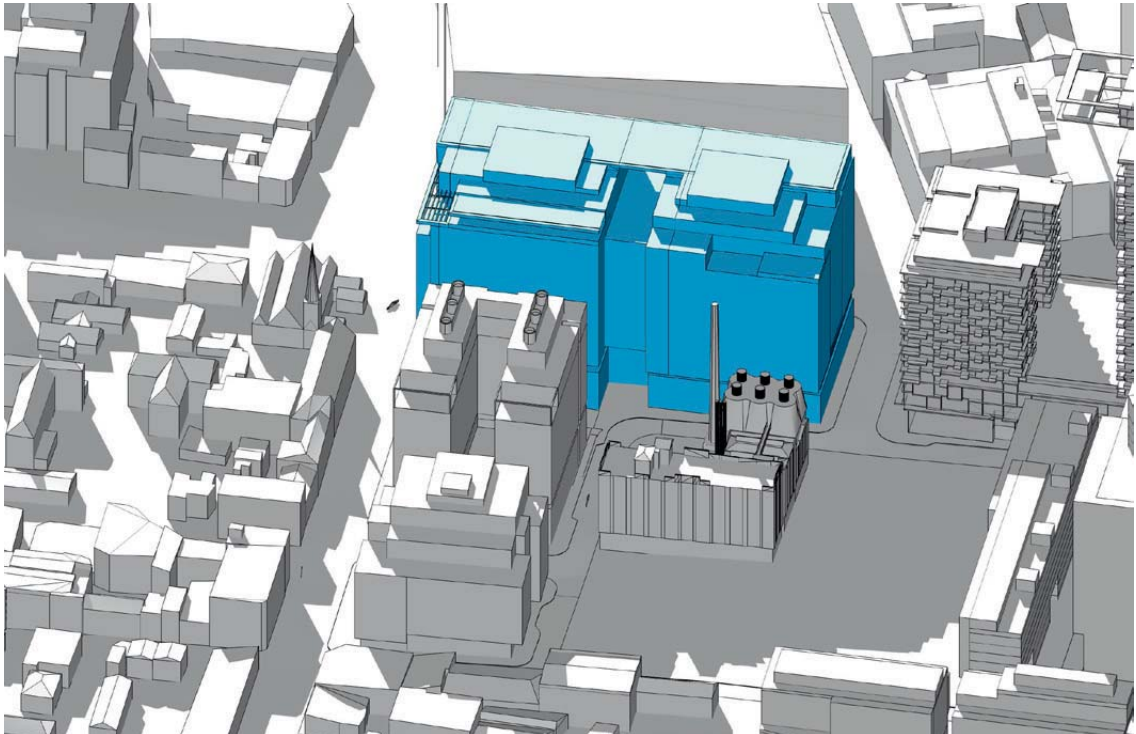
Shadow study

Comparison between the Concept Masterplan Envelope (MOD9) and B4N SSD Application scheme - 21st June, 02:00 PM

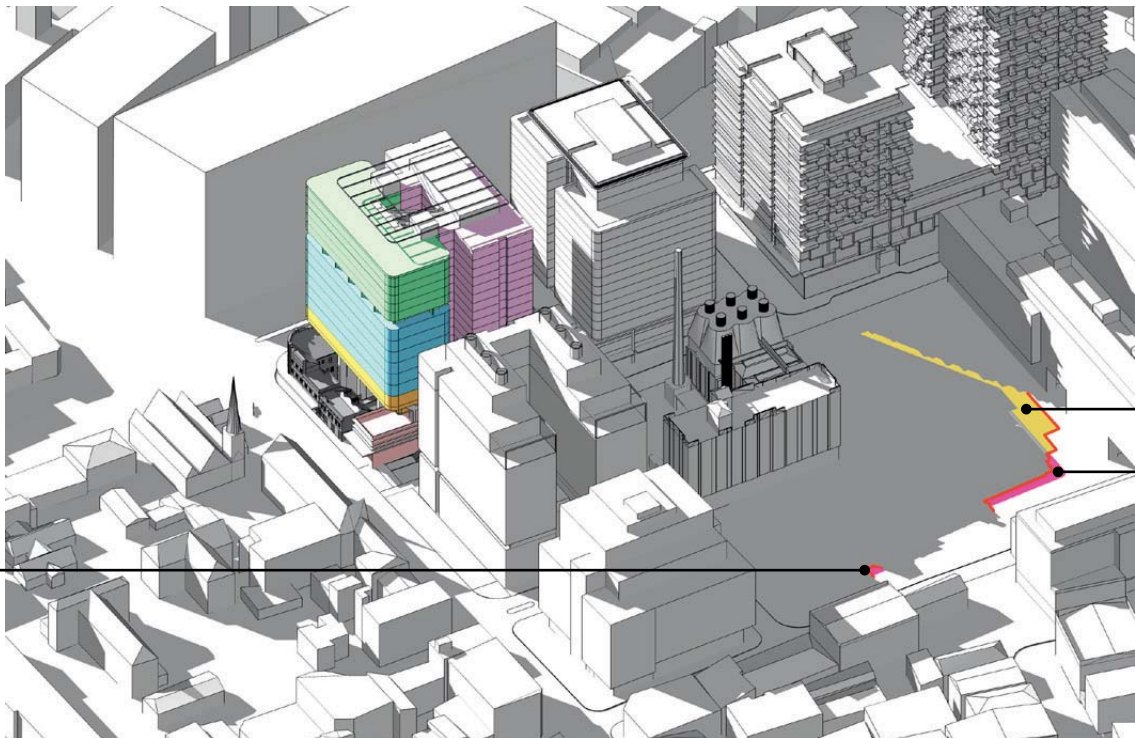
- Shadow line of Concept Plan MOD9
- B4N Additional SUNLIGHT to Concept Plan in comparison with Concept Plan MOD9
- B4N Additional SHADOW to Concept Plan in comparison with Concept Plan MOD9



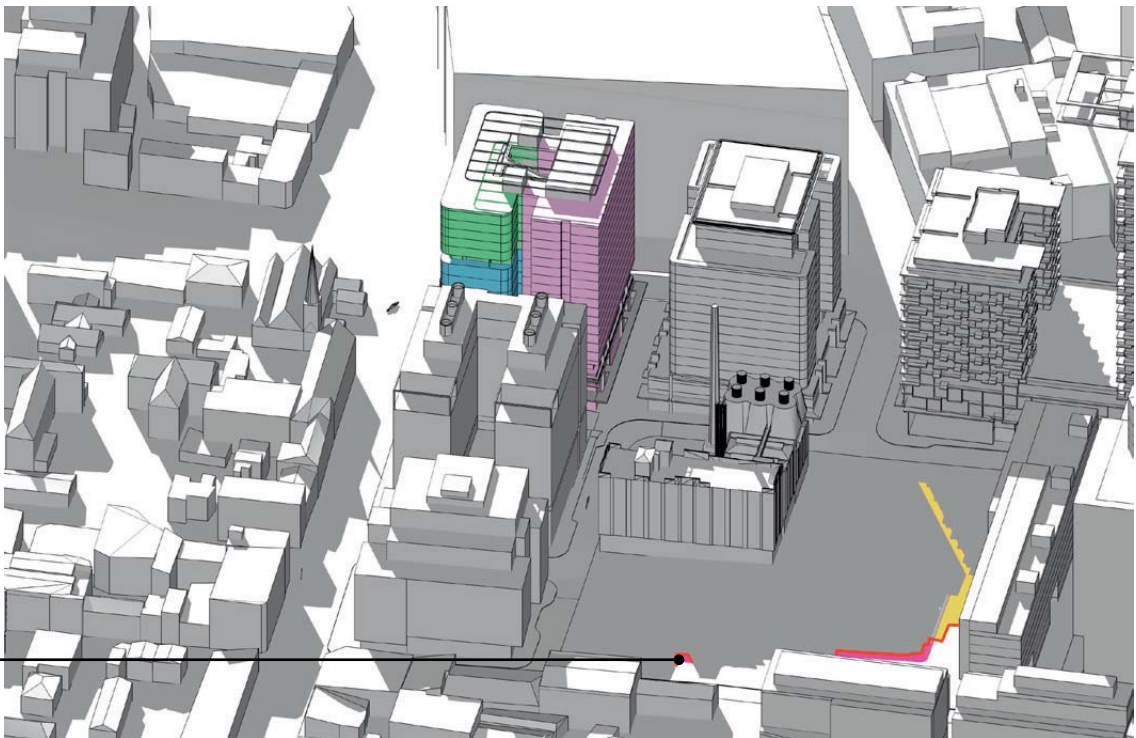
Masterplan Envelope as per S75W Amendments (MOD9) - 21 June 02.00 PM



Masterplan Envelope as per S75W Amendments (MOD9) - 21 June 02.00 PM



Block 4N and 1 as per SSD Application - 21 June 02.00 PM



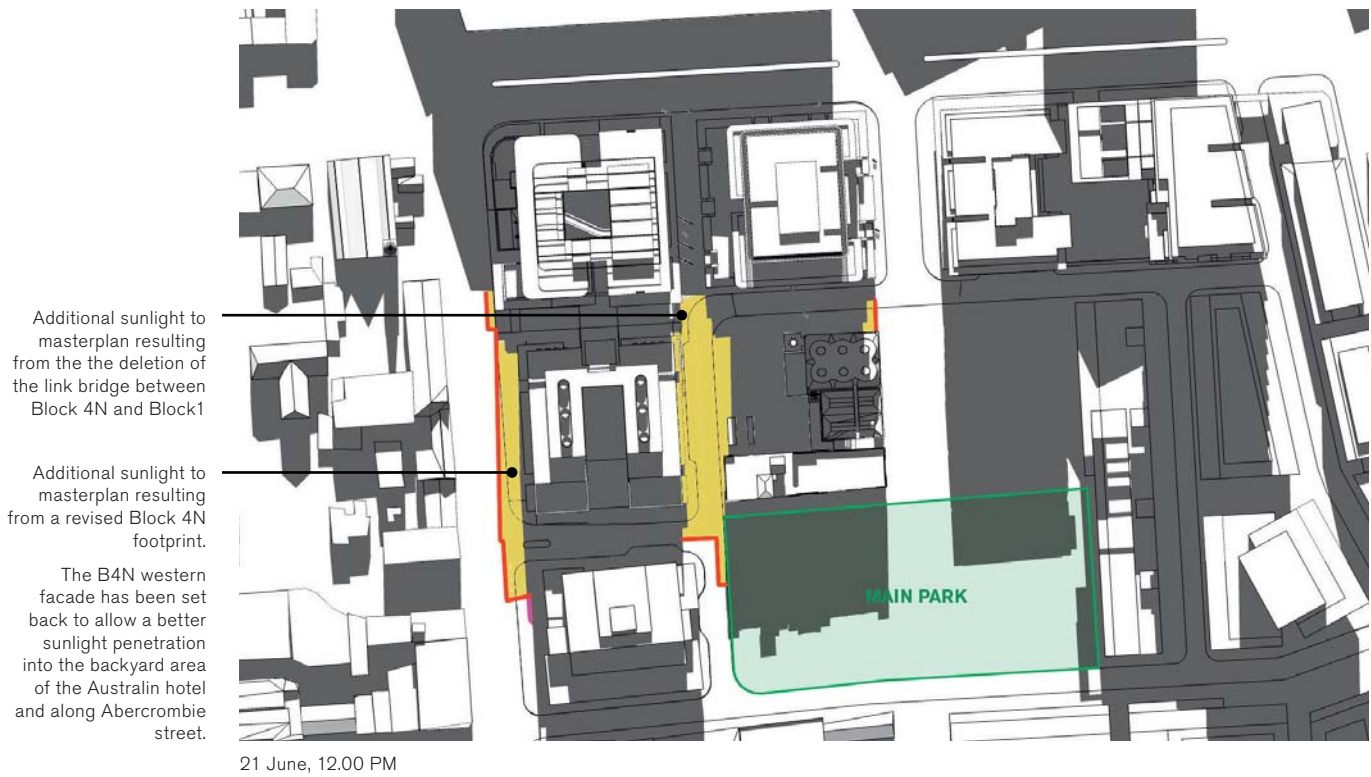
Block 4N and 1 as per SSD Application - 21 June 02.00 PM



Shadow study

Comparison between the Concept Masterplan Envelope (MOD9) and B4N SSD Application scheme.

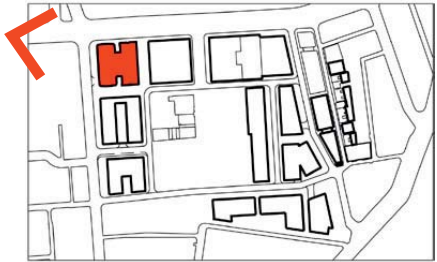
- Shadow line of Concept Plan MOD9
- B4N Additional SUNLIGHT to Concept Plan in comparison with Concept Plan MOD9
- B4N Additional SHADOW to Concept Plan in comparison with Concept Plan MOD9



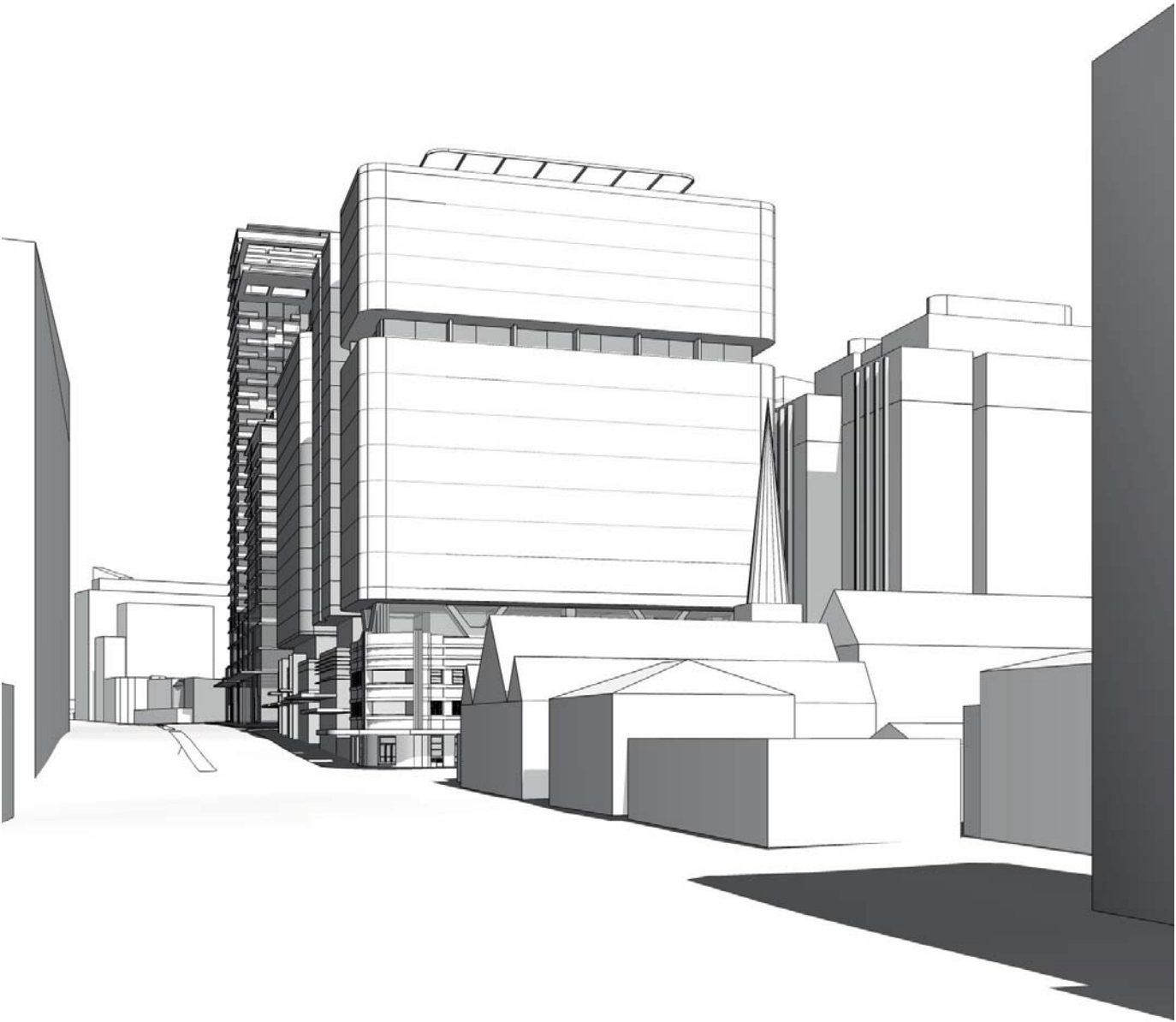


**Massing studies**  
Broadway View

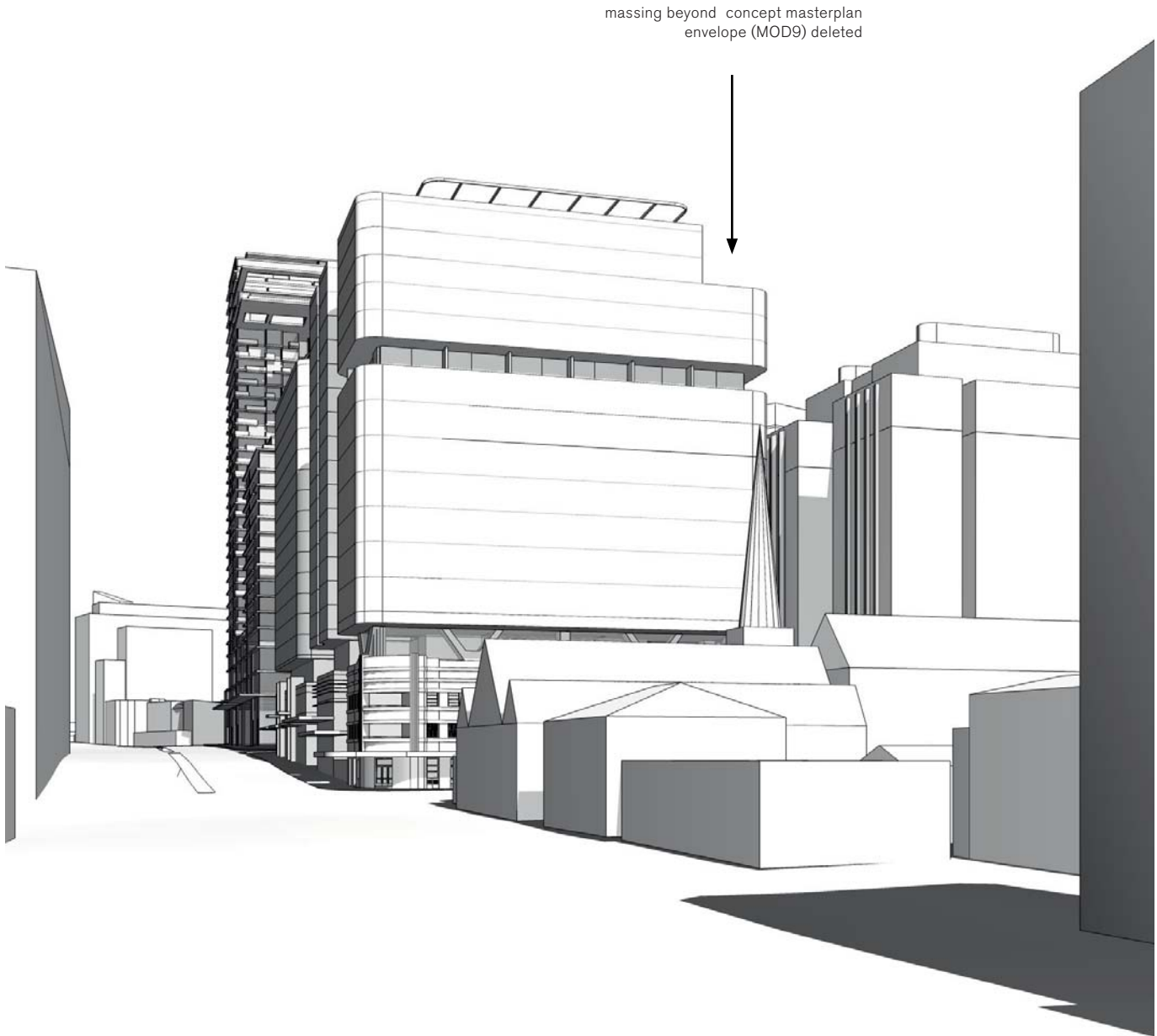
The study shows the current B4N massing scheme with and without the exceeding massing volumes on the southern elevation.



Key Plan



Block 4N Current Scheme as per SSD Application



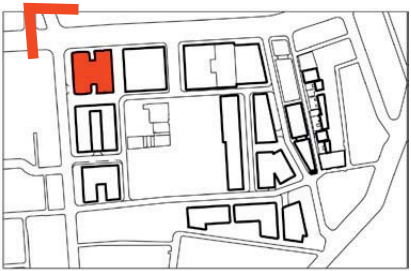
Block 4N Scheme reduced in height on the southern elevation



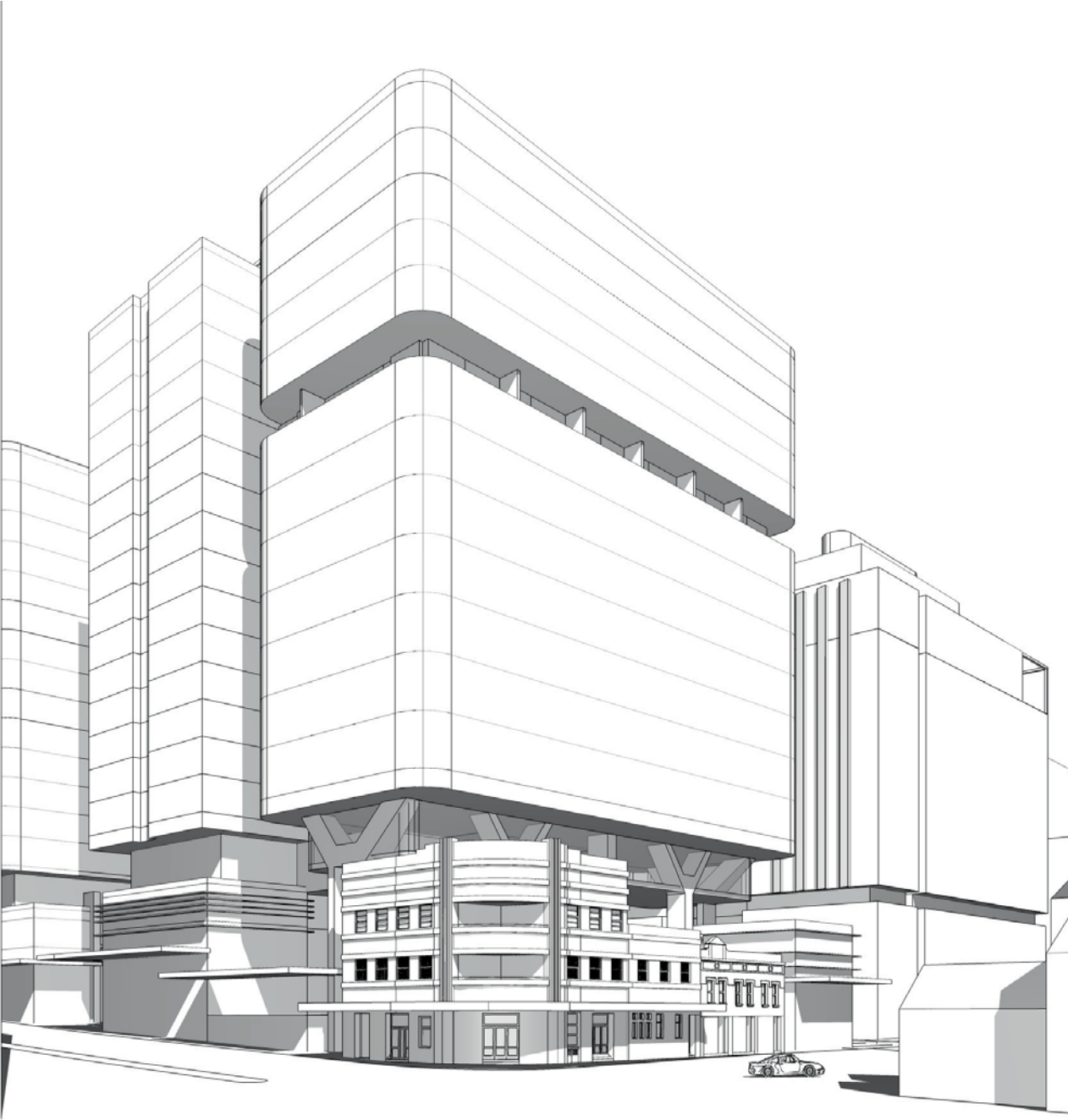
**Massing studies**  
Corner View

The study shows the current B4N massing scheme with and without the exceeding massing volumes on the southern elevation.

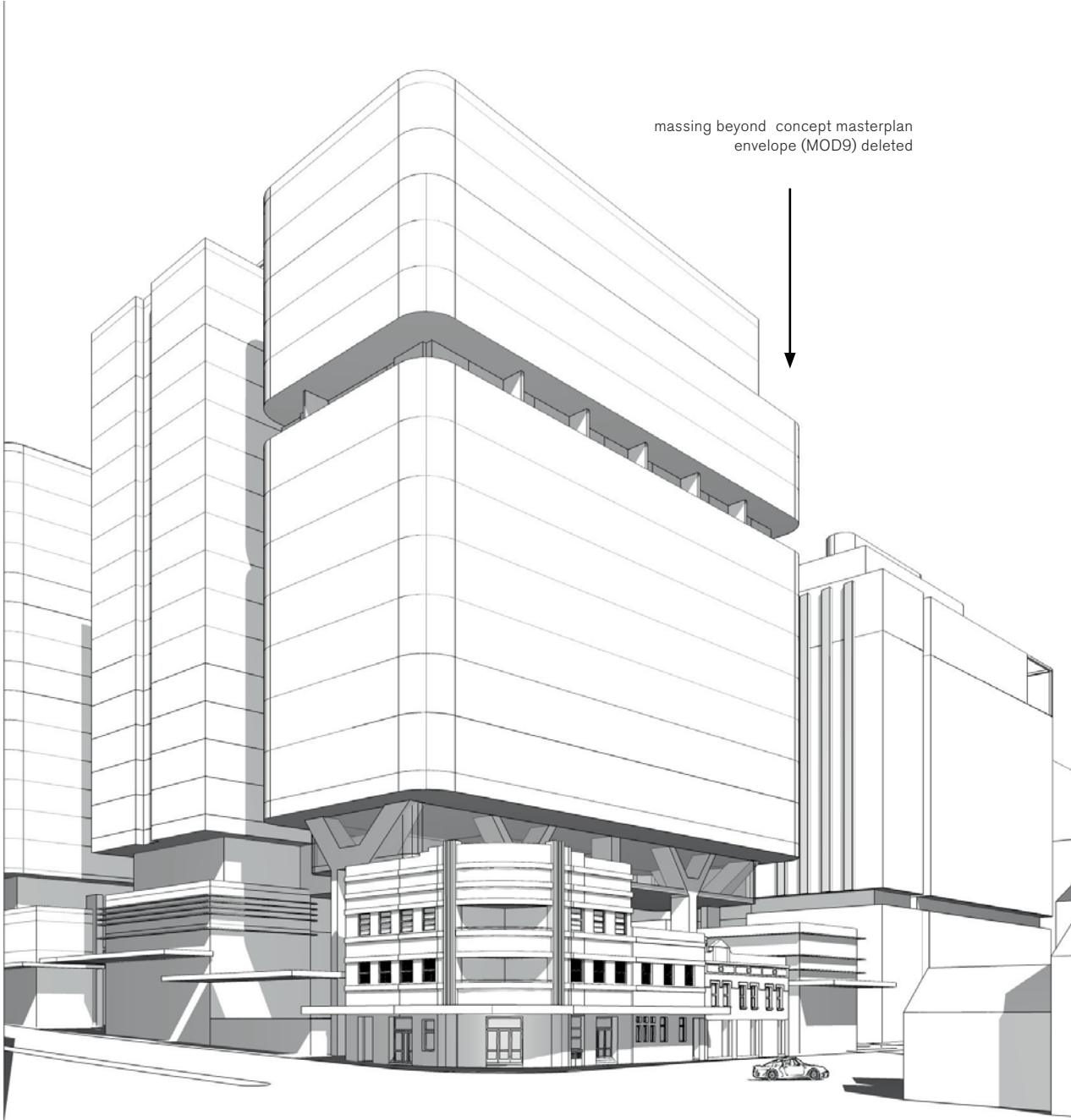
**A.3**



Key Plan



**Block 4N Current Scheme as per SSD Application**



**Block 4N Scheme reduced in height on the southern elevation**



Massing studies

Abercrombie View

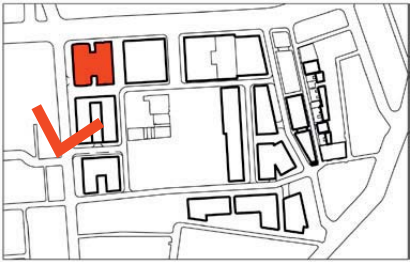
The study shows the current B4N massing scheme with and without the exceeding massing volumes on the southern elevation.



Block 4N Current Scheme as per SSD Application



Block 4N Scheme reduced in height on the southern elevation



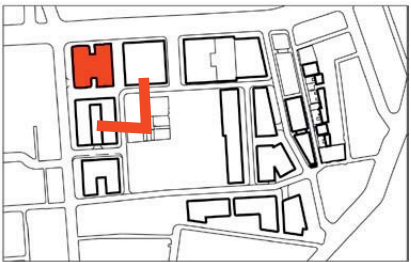
Key Plan



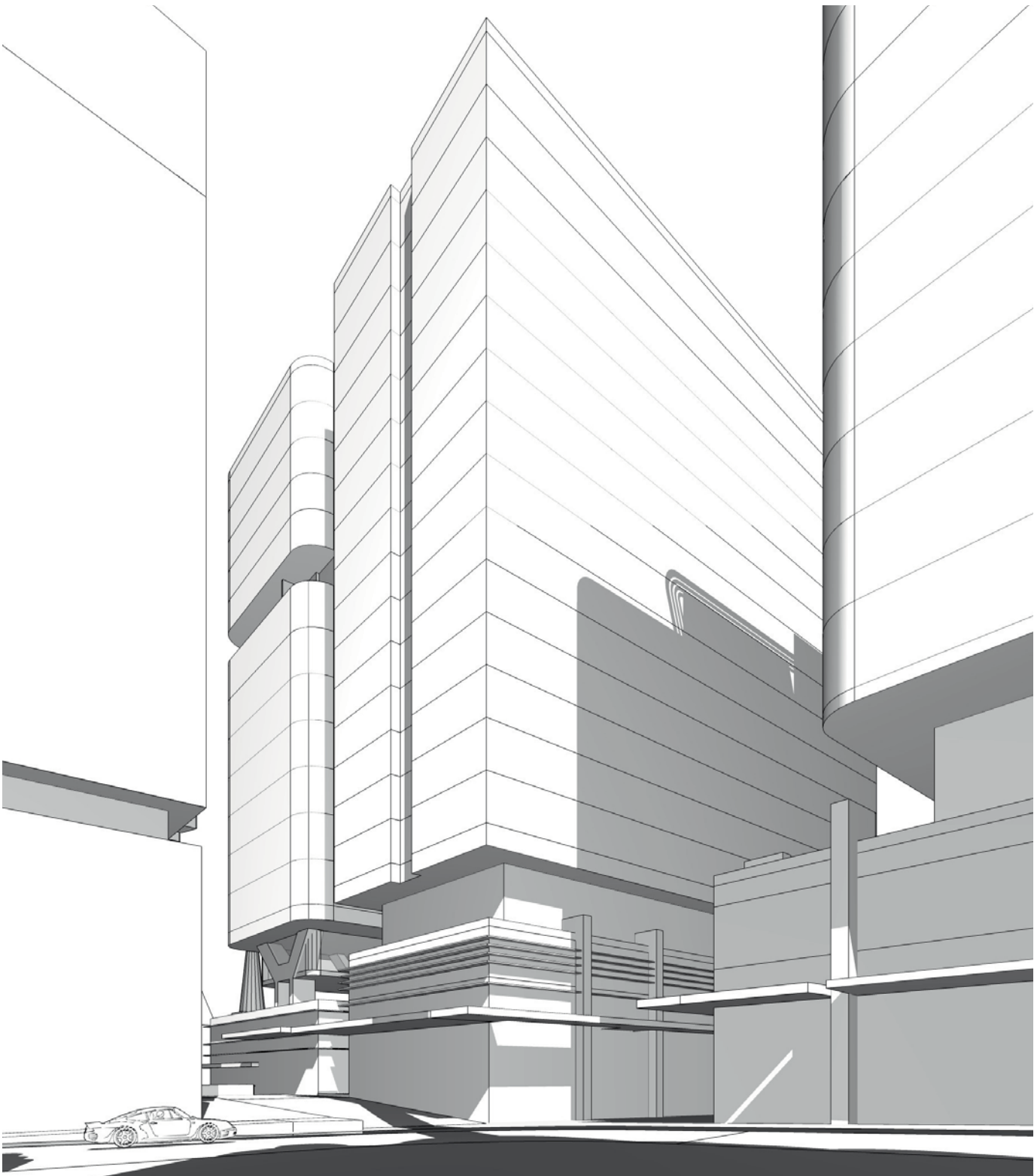
**Massing studies**  
Park View

The study shows the current B4N massing scheme with and without the exceeding massing volumes on the southern elevation.

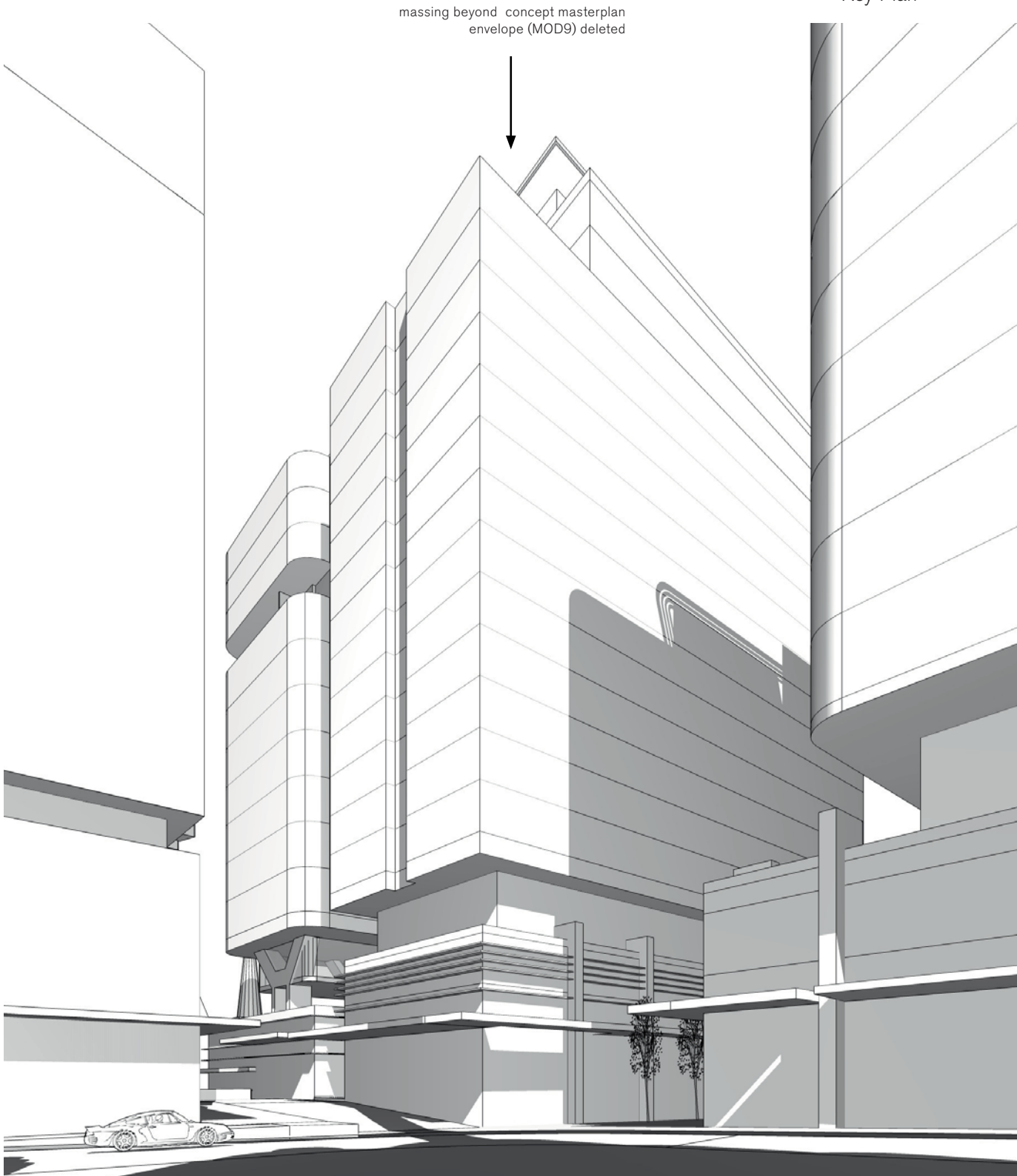
**A.3**



Key Plan



Block 4N Current Scheme as per SSD Application



Block 4N Scheme reduced in height on the southern elevation



