

Comparison of approved PA Scheme to Current Proposal

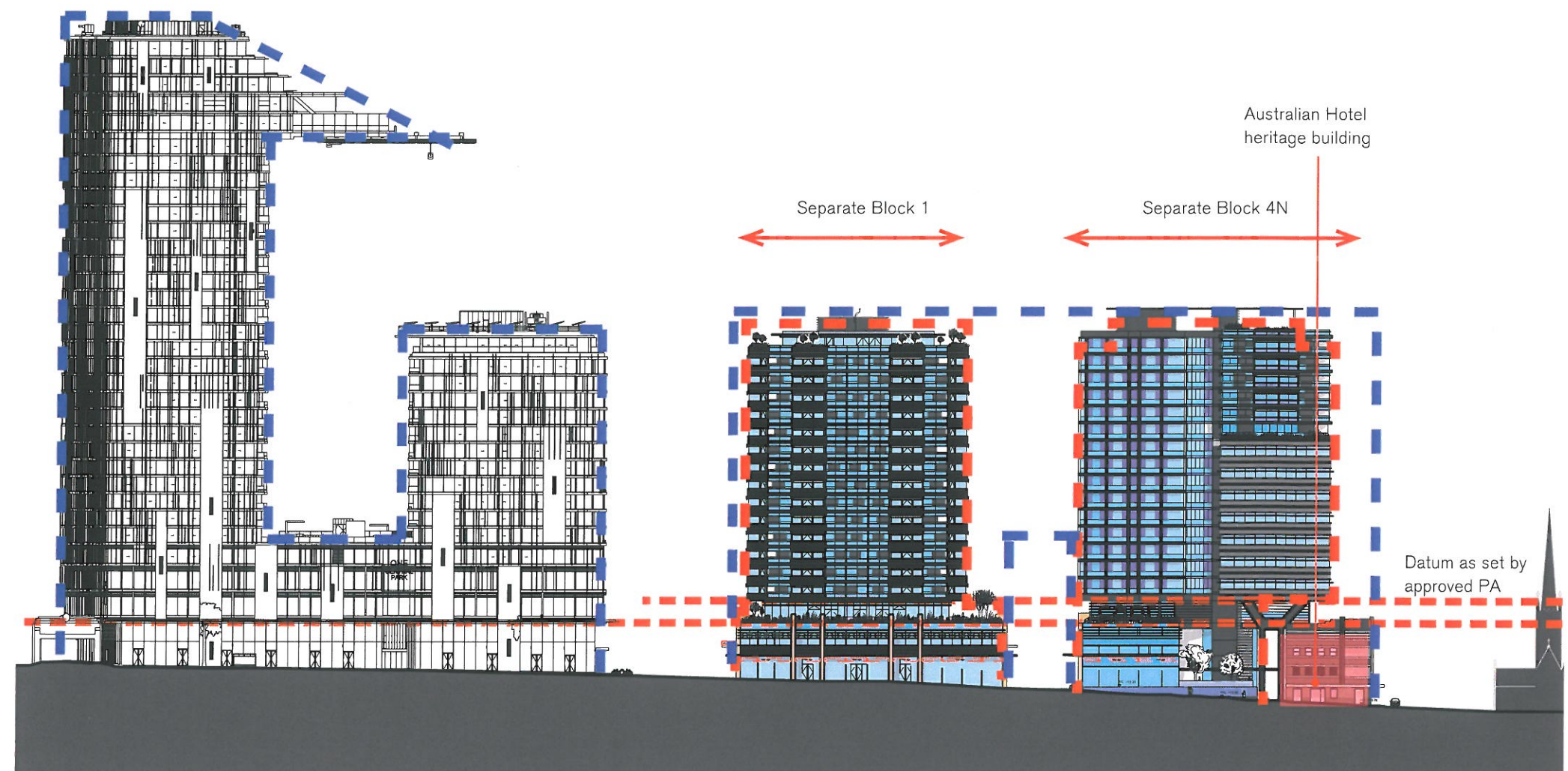
Streetscape - Revised proposal

5.2

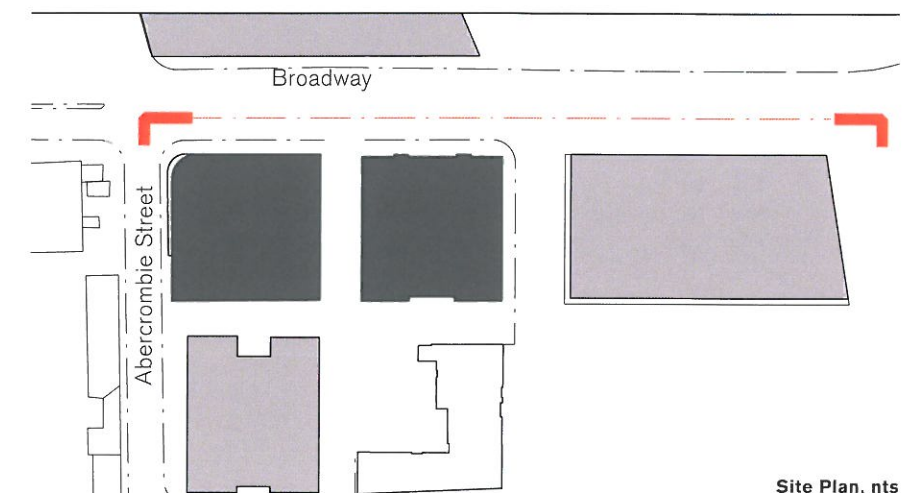
The revision of the overall massing into two separate blocks allows for a more articulated streetscape to Broadway.

The Podium datum previously set by the approved PA is maintained to ensure the visual continuity along the street between the new buildings and existing heritage buildings.

The datum also ensures that the Facade along the Podium is kept to a human scale, with the neck set back to address the heritage buildings and reduce the height impact of the massing above. The engagement with the heritage buildings is further reinforced by the incorporation of awnings that respond to and extend the awning of the Australian Hotel.



Revised Elevation along Broadway, nts



Site Plan, nts