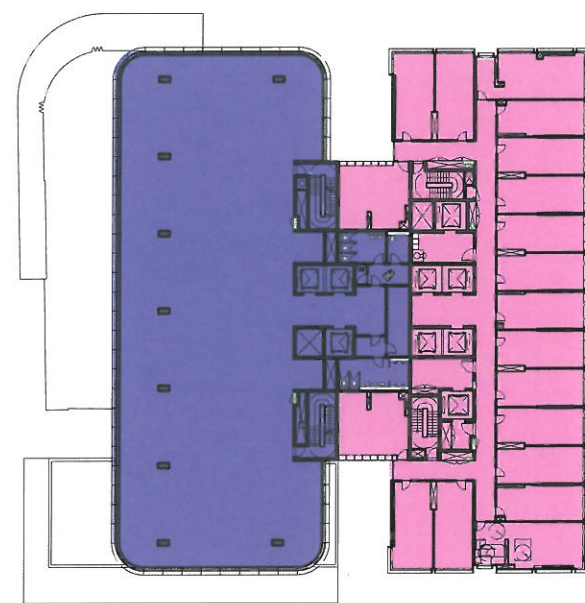




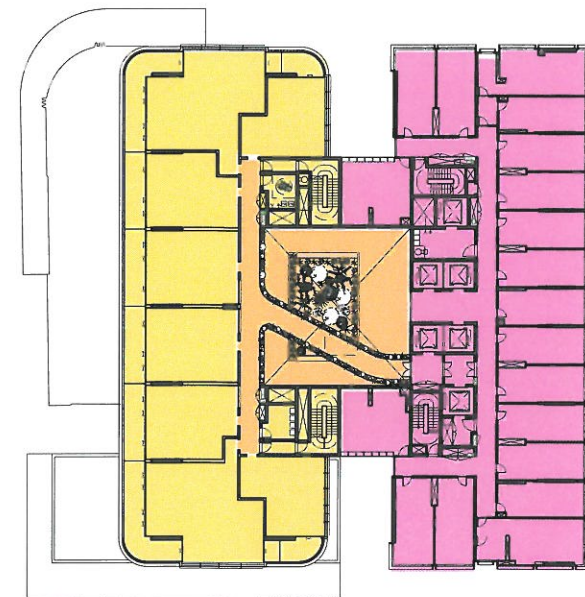
Block 4N - Ground Floor Level, nts



Block 4N - Neck Level 3, nts



Block 4N - Typical Commercial / Hotel Levels, nts



Block 4N - Typical Residential / Hotel Levels, nts

Façade Design

Revised Podium Façade Concept

General Design Concept:

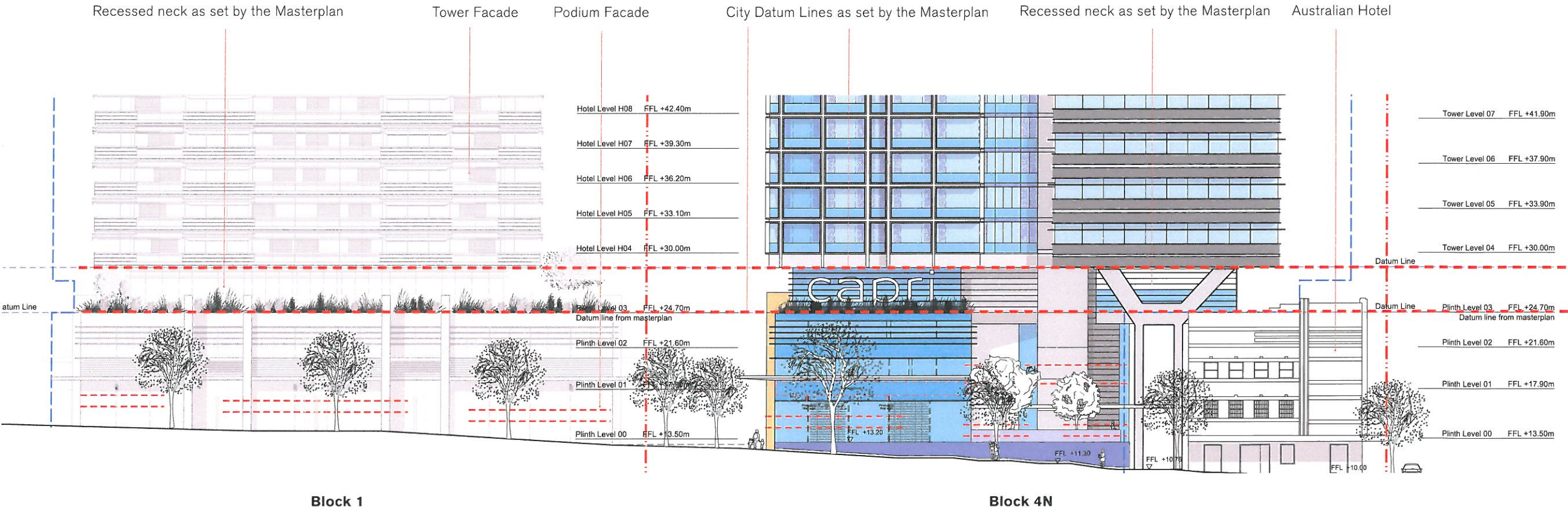
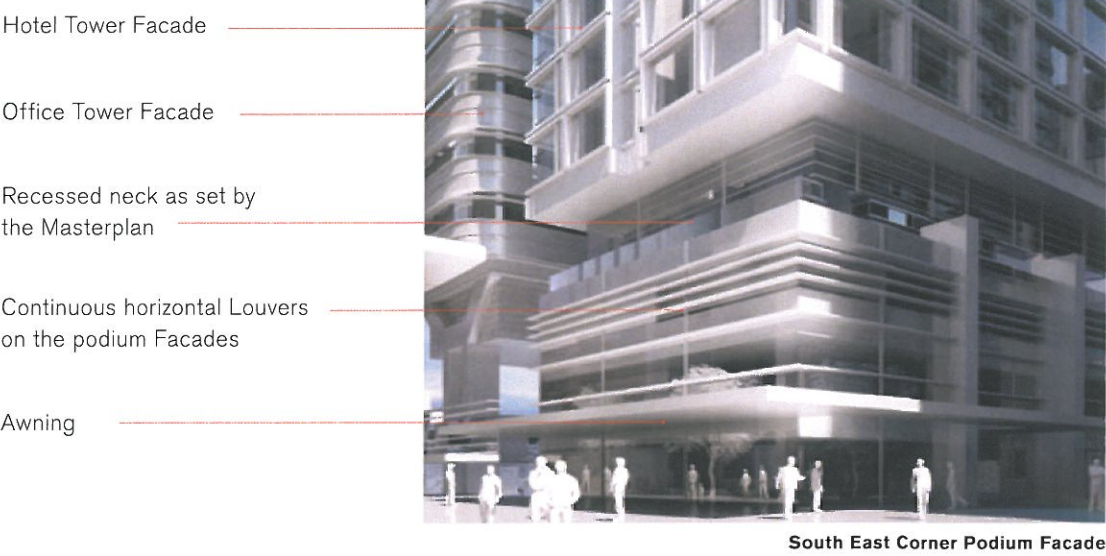
The general design concepts, which have been established for the facade of Block 4N can be summarized as follows:

- Curved and Horizontal**
The overall language for the facade has been developed with an emphasis on horizontality and the implementation of curved corners on the western massing that take its cue from the Australian Hotel.
- Keeping within Masterplan Principles**
The facade design adheres to Masterplan principles, such as the City Datum line and the recessed neck level
- Environmentally Sustainable Design targets**
Facades will be designed and specified to achieve a 5-star Greenstar rating.

Master plan Concepts: City Datum

The revised façade design of the Block 4N building maintains a key element of the Concept Masterplan massing strategy with the inclusion of the 'City Datum' line (see part elevation below).

This concept established in the existing approvals for Block 4N and Block 1 sets a recessed line in the building massing. This 'neck' recess is set at a height that generates street scale facades that formally respect the scale of the Heritage Buildings on the corner of Broadway and Abercrombie Street. The 'neck' further serves to divide the building into the 'tower' above the 'neck line', and the 'podium' below the 'neck line'.



Part elevation along Broadway, scale 1:500