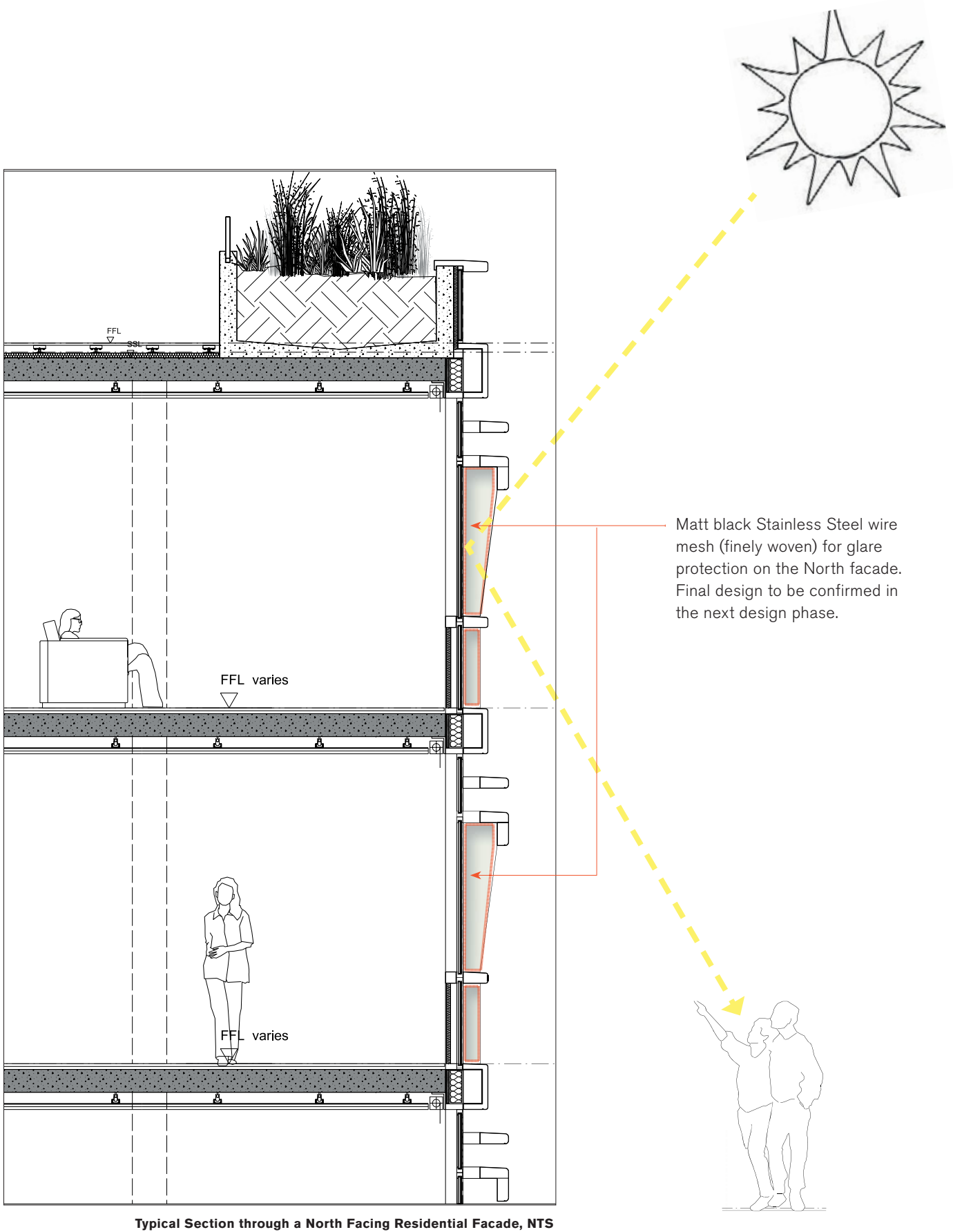
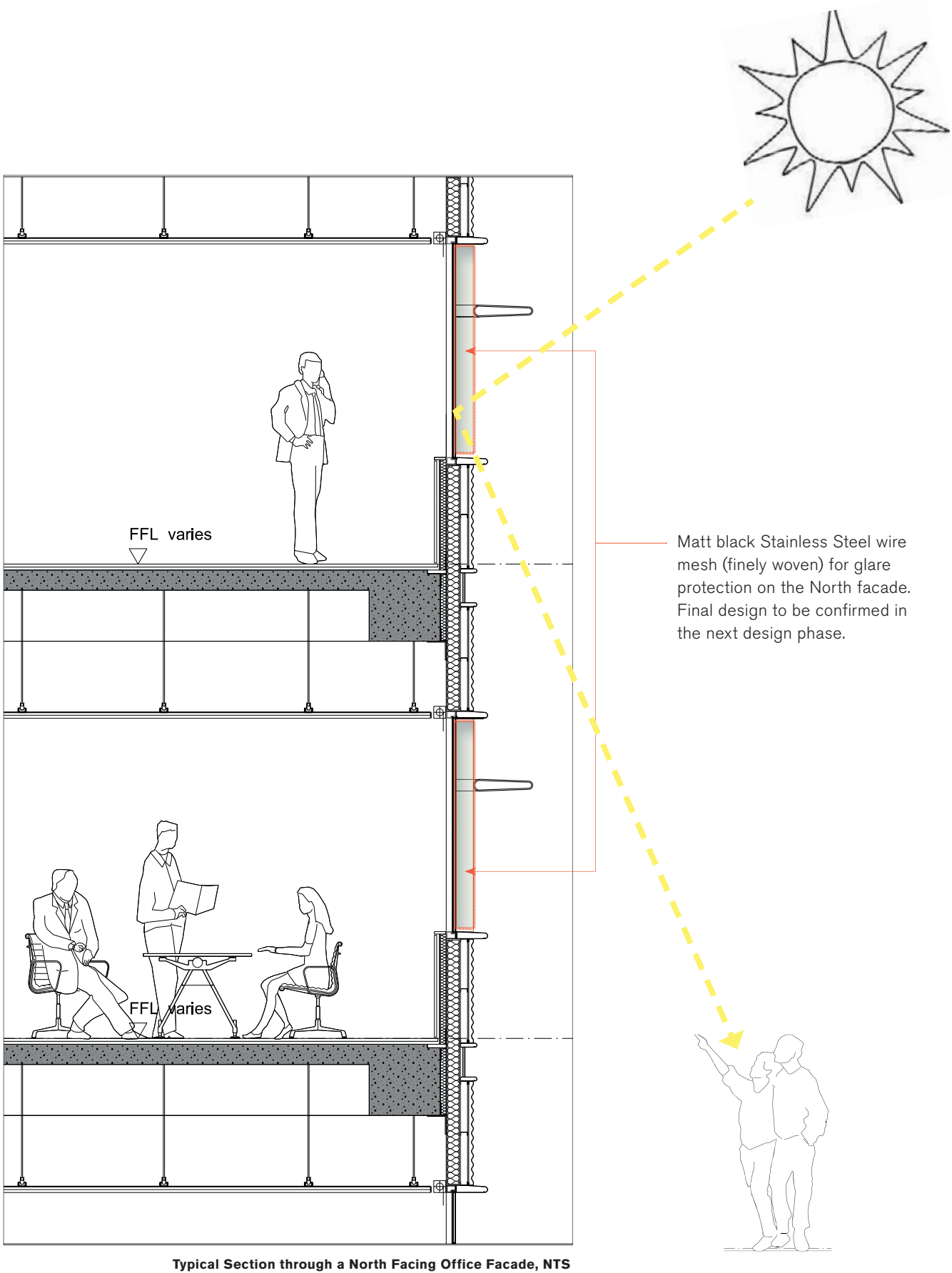


Façade Design

Revised Tower Façade Design - North Facade Glare



5.5.



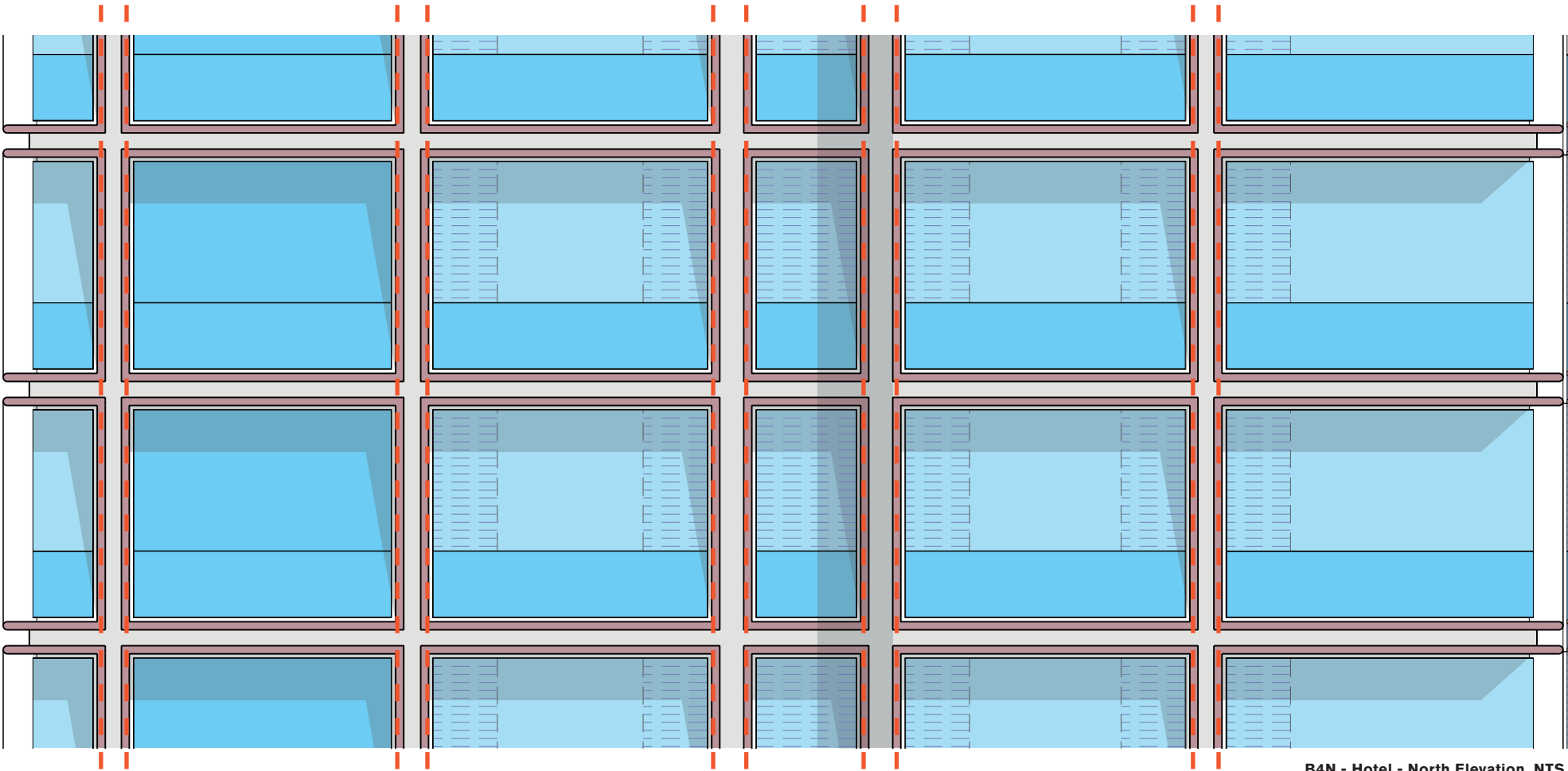
Façade Design

Revised Tower Façade Design - North Facade Glare

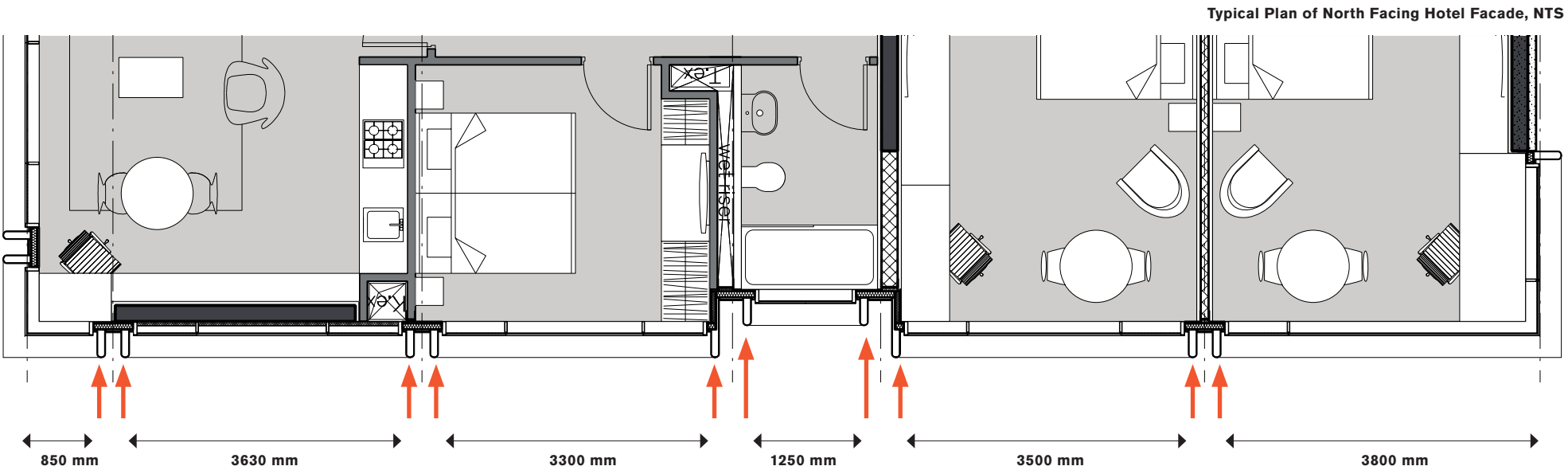
Response to Glare issues on the hotel North Facade

On the northern façade, vertical fin elements to the glazing have been recommended to intercept morning and afternoon solar rays reflecting onto Broadway (see Solar Reflectivity Assessment 4946 for Frasers Broadway, submitted in March 2009 by CPP). Anti glare measures have been incorporated within the cladding module of the hotel itself as each individual unit has been separated from the other by a double vertical fin which protrudes from the outer glazing line.

Please also refer to Solar Reflectivity Assessment information by Consultants



B4N - Hotel - North Elevation, NTS



Typical Plan of North Facing Hotel Facade, NTS

Façade Design

Revised Tower Façade Design - North Facade Glare

5.5.

