

Peak Apartments

Position: P3B

Level: 40

RL: 126.725 (Camera Height)

FOR INFORMATION ONLY

These images have been produced for view analysis purposes only.
Proposed outer parameters for built form ("parameter boxes") shown form part of State Significant Development Application SSD 5778-2013 and do not form part of this development application.
Building forms shown include those approved as part of State Significant Development Applications SSD5752 (ICC Core Facilities), SSD 6116 (ICC Hotel), SSD6013 (NW Plot mixed use development), SSD6013 (NW Plot commercial/public car park development) and SSD6010 (Student Accomodation development) as well as the proposed SSDA7 development. purposes.

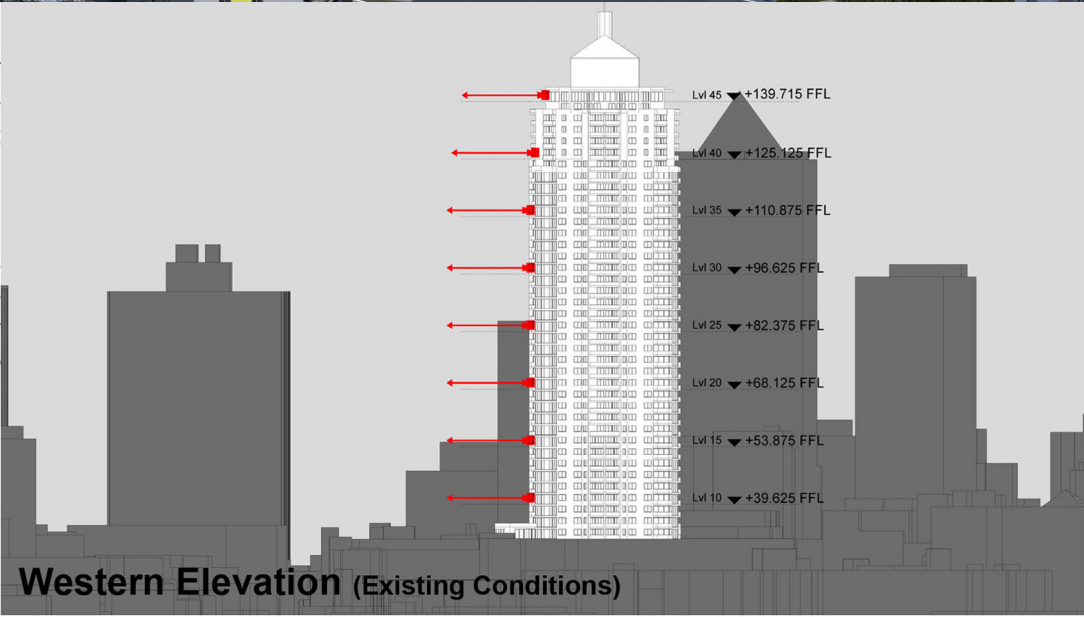
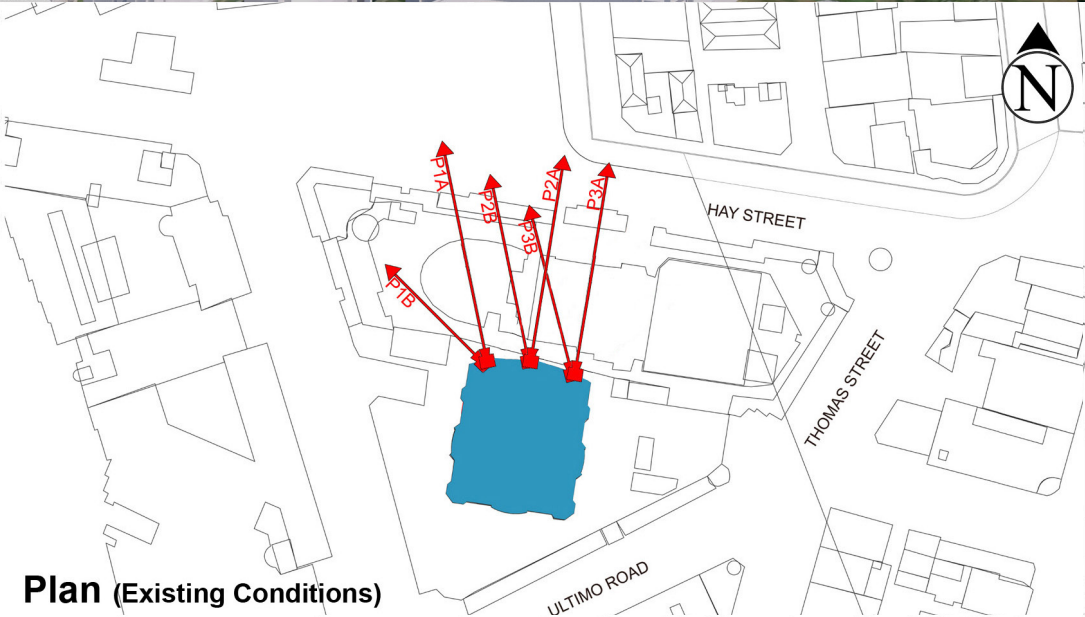
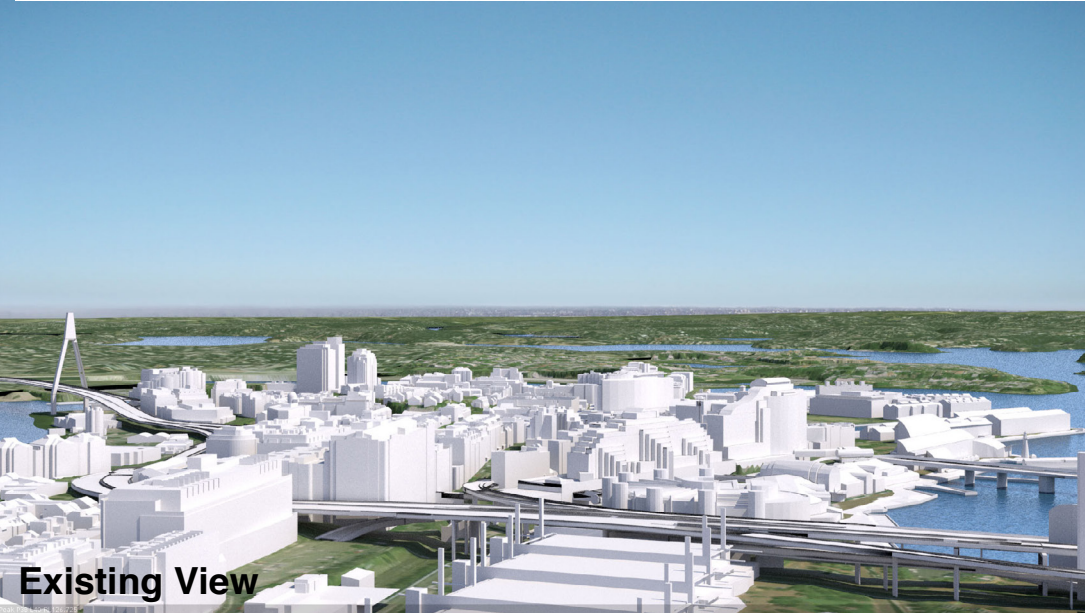
LEGEND:

Key Building

View Direction (50mm Camera)

Parameter Boxes in the Haymarket Precinct

42



Peak Apartments

Position: P3B

Level: 35

RL: 112.475 (Camera Height)

FOR INFORMATION ONLY

These images have been produced for view analysis purposes only.
Proposed outer parameters for built form ("parameter boxes") shown form part of State Significant Development Application SSD 5778-2013 and do not form part of this development application.
Building forms shown include those approved as part of State Significant Development Applications SSD5752 (ICC Core Facilities), SSD 6116 (ICC Hotel), SSD6013 (NW Plot mixed use development), SSD6013 (NW Plot commercial/public car park development) and SSD6010 (Student Accomodation development) as well as the proposed SSDA7 development. purposes.

LEGEND:

Key Building

View Direction (50mm Camera)

Parameter Boxes in the Haymarket Precinct

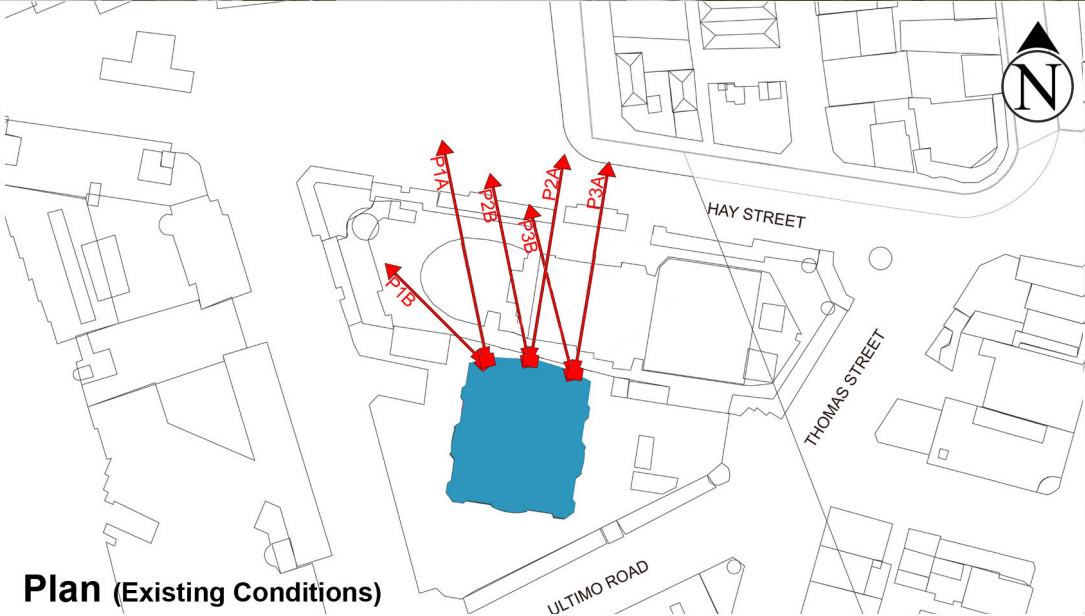
43



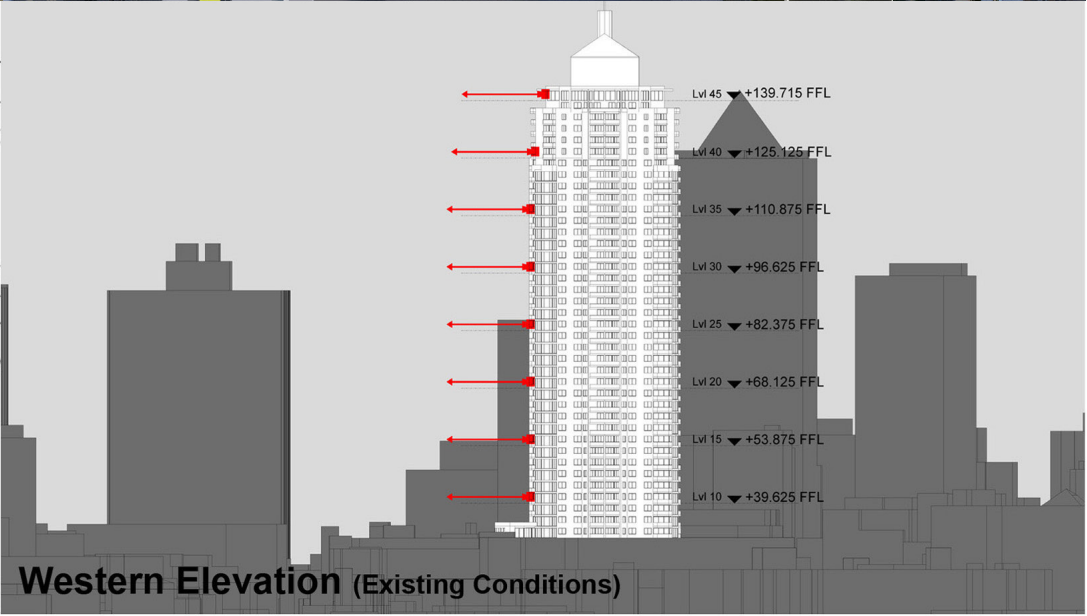
Existing View



Proposed View



Plan (Existing Conditions)



Western Elevation (Existing Conditions)

Peak Apartments

Position: P3B

Level: 30

RL: 98.225 (Camera Height)

FOR INFORMATION ONLY

These images have been produced for view analysis purposes only.
Proposed outer parameters for built form ("parameter boxes") shown form part of State Significant Development Application SSD 5778-2013 and do not form part of this development application.
Building forms shown include those approved as part of State Significant Development Applications SSD5752 (ICC Core Facilities), SSD 6116 (ICC Hotel), SSD6013 (NW Plot mixed use development), SSD6013 (NW Plot commercial/public car park development) and SSD6010 (Student Accomodation development) as well as the proposed SSDA7 development. purposes.

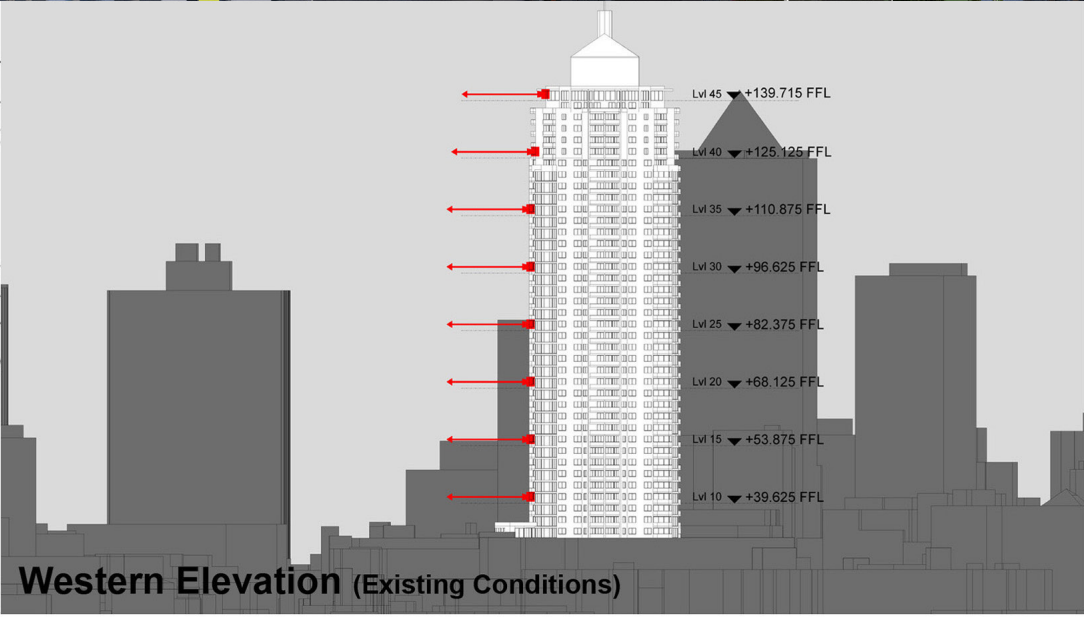
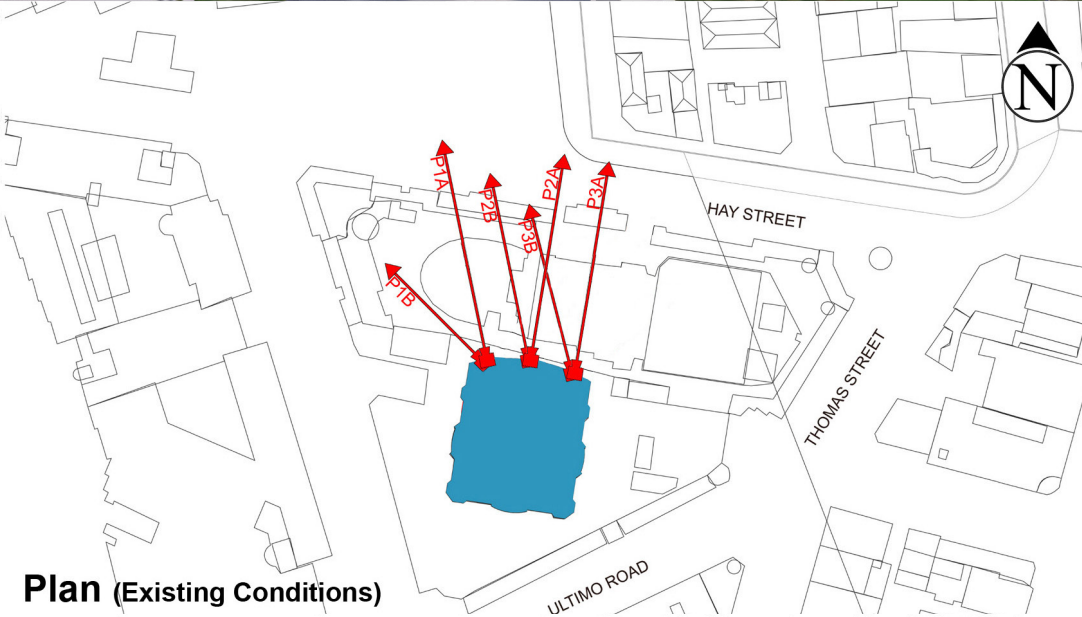
LEGEND:

Key Building

View Direction (50mm Camera)

Parameter Boxes in the Haymarket Precinct

44



Peak Apartments

Position: P3B

Level: 25

RL: 83.975 (Camera Height)

FOR INFORMATION ONLY

These images have been produced for view analysis purposes only.
Proposed outer parameters for built form ("parameter boxes") shown form part of State Significant Development Application SSD 5778-2013 and do not form part of this development application.
Building forms shown include those approved as part of State Significant Development Applications SSD5752 (ICC Core Facilities), SSD 6116 (ICC Hotel), SSD6013 (NW Plot mixed use development), SSD6013 (NW Plot commercial/public car park development) and SSD6010 (Student Accomodation development) as well as the proposed SSDA7 development. purposes.

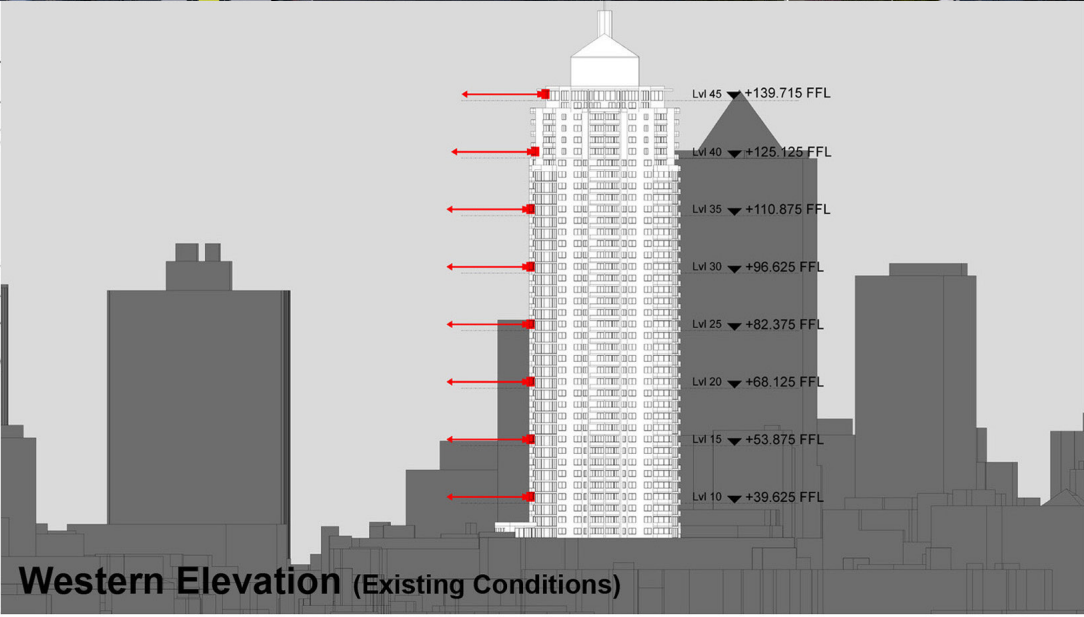
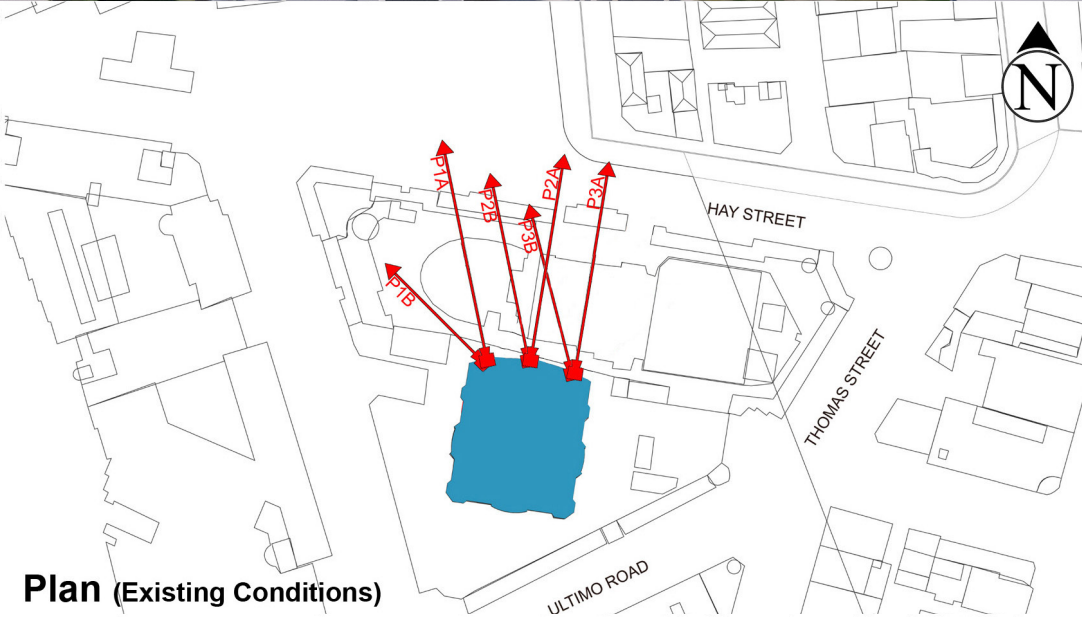
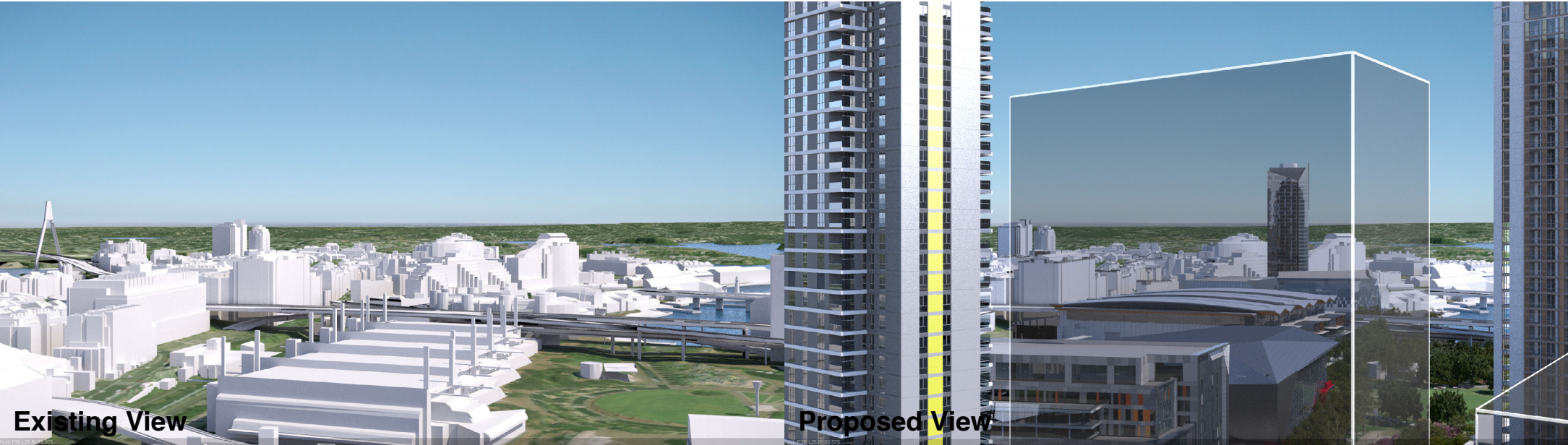
LEGEND:

Key Building

View Direction (50mm Camera)

Parameter Boxes in the Haymarket Precinct

45



Peak Apartments

Position: P3B

Level: 20

RL: 69.725 (Camera Height)

FOR INFORMATION ONLY

These images have been produced for view analysis purposes only.
Proposed outer parameters for built form ("parameter boxes") shown form part of State Significant Development Application SSD 5778-2013 and do not form part of this development application.
Building forms shown include those approved as part of State Significant Development Applications SSD5752 (ICC Core Facilities), SSD 6116 (ICC Hotel), SSD6013 (NW Plot mixed use development), SSD6013 (NW Plot commercial/public car park development) and SSD6010 (Student Accomodation development) as well as the proposed SSDA7 development. purposes.

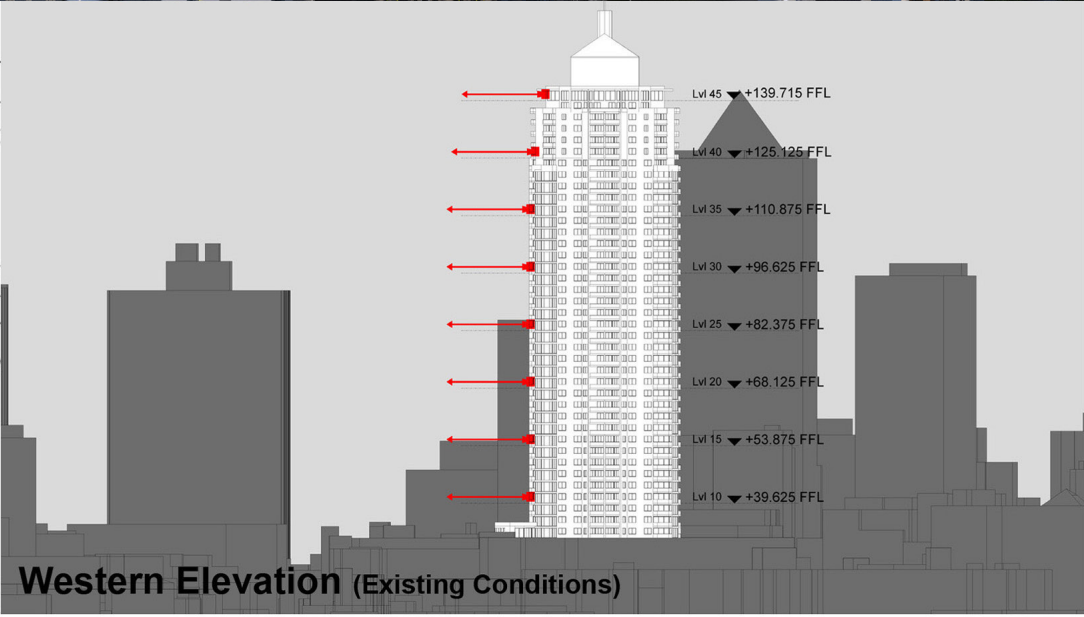
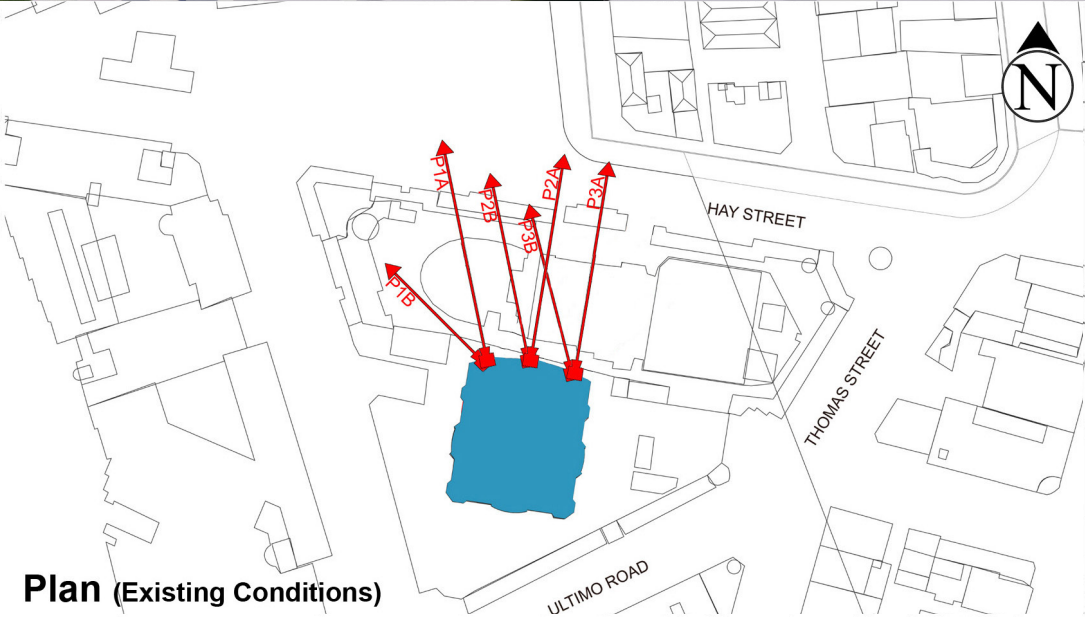
LEGEND:

Key Building

View Direction (50mm Camera)

Parameter Boxes in the Haymarket Precinct

46



Peak Apartments

Position: P3B

Level: 15

RL: 55.475 (Camera Height)

FOR INFORMATION ONLY

These images have been produced for view analysis purposes only.
Proposed outer parameters for built form ("parameter boxes") shown form part of State Significant Development Application SSD 5778-2013 and do not form part of this development application.
Building forms shown include those approved as part of State Significant Development Applications SSD5752 (ICC Core Facilities), SSD 6116 (ICC Hotel), SSD6013 (NW Plot mixed use development), SSD6013 (NW Plot commercial/public car park development) and SSD6010 (Student Accomodation development) as well as the proposed SSDA7 development. purposes.

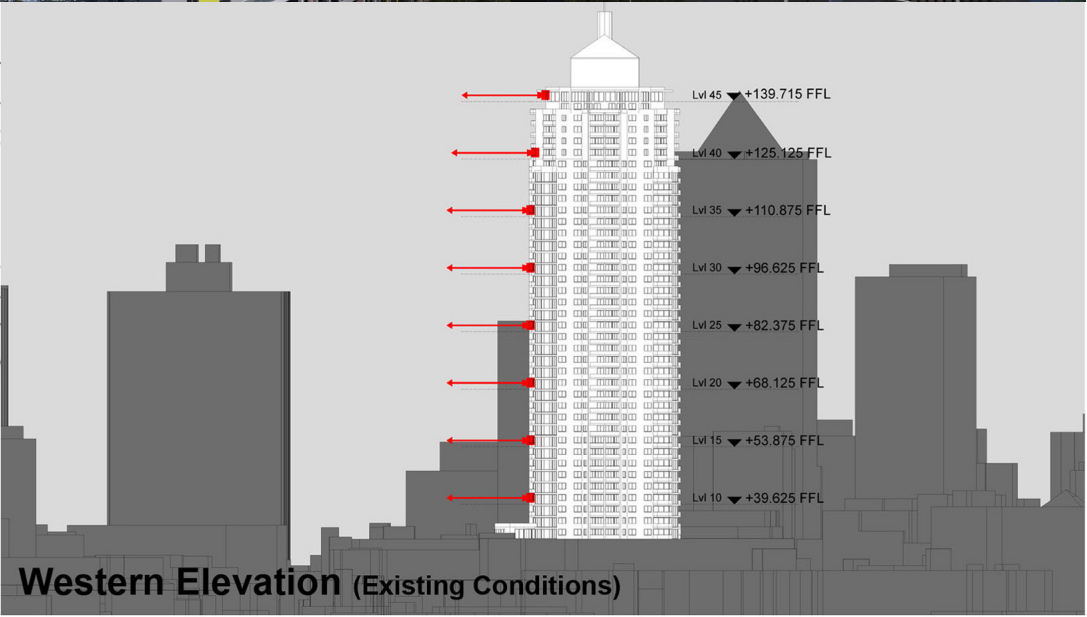
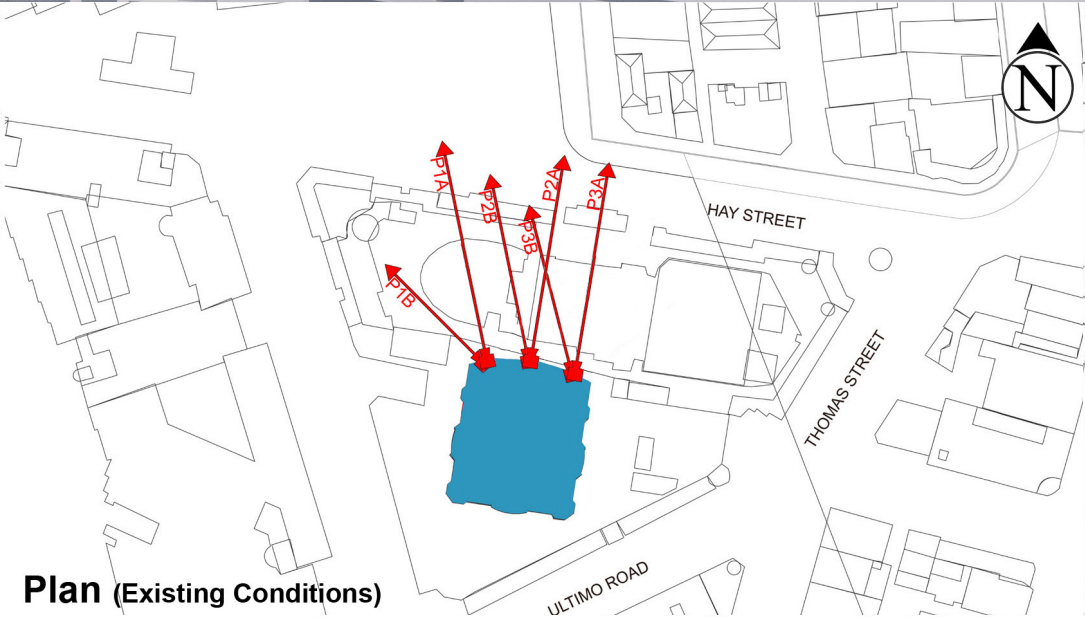
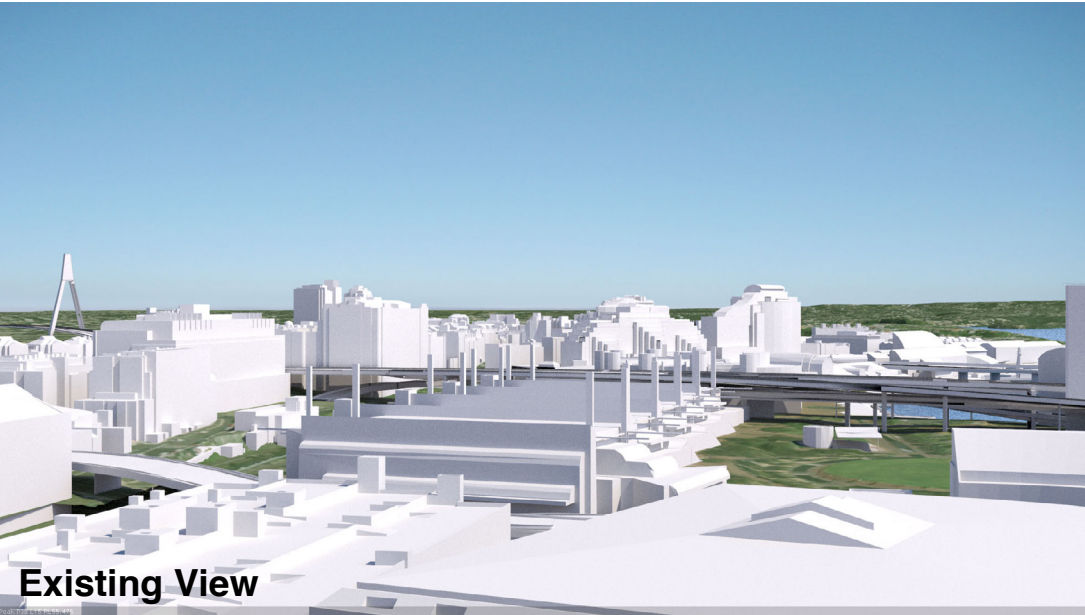
LEGEND:

47

Key Building

View Direction (50mm Camera)

Parameter Boxes in the Haymarket Precinct



Peak Apartments

Position: P3B

Level: 10

RL: 41.225 (Camera Height)

FOR INFORMATION ONLY

These images have been produced for view analysis purposes only.
Proposed outer parameters for built form ("parameter boxes") shown form part of State Significant Development Application SSD 5778-2013 and do not form part of this development application.
Building forms shown include those approved as part of State Significant Development Applications SSD5752 (ICC Core Facilities), SSD 6116 (ICC Hotel), SSD6013 (NW Plot mixed use development), SSD6013 (NW Plot commercial/public car park development) and SSD6010 (Student Accomodation development) as well as the proposed SSDA7 development. purposes.

LEGEND:

Key Building

View Direction (50mm Camera)

Parameter Boxes in the Haymarket Precinct

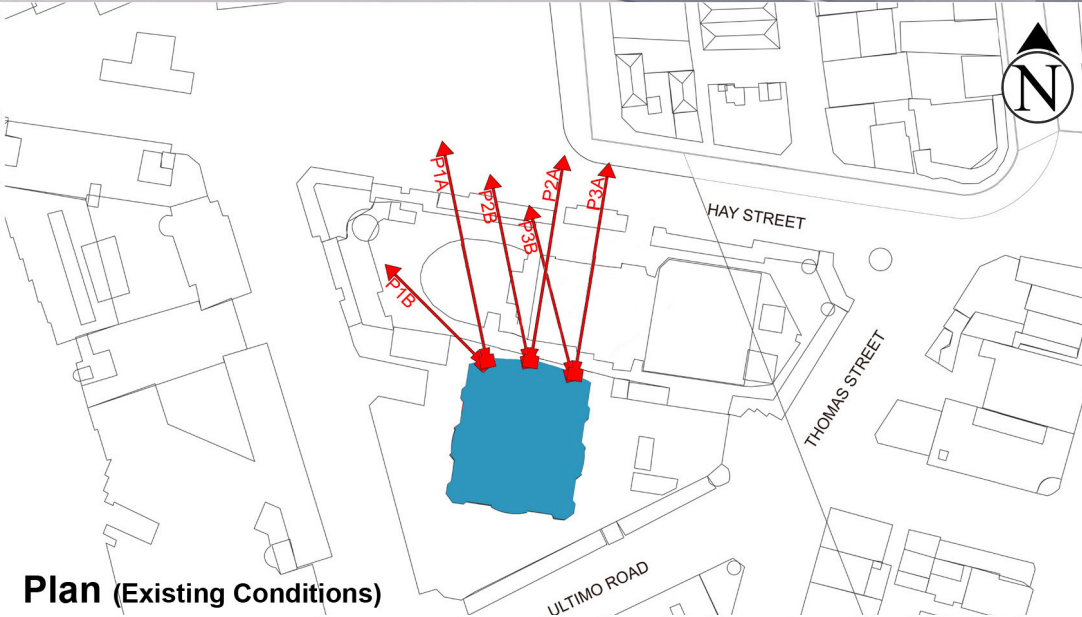
48



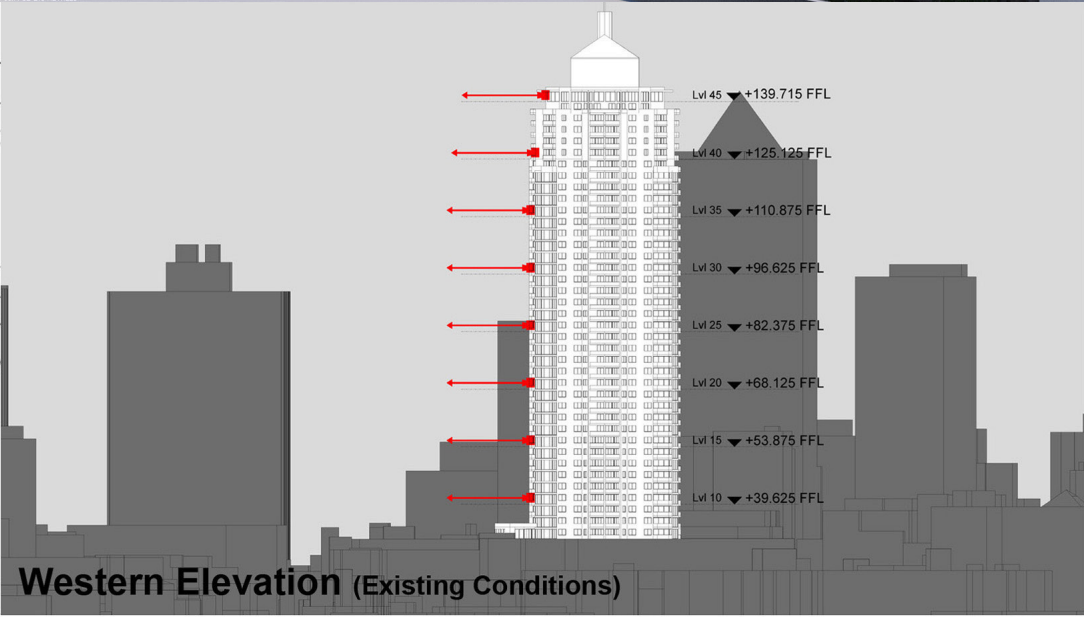
Existing View



Proposed View



Plan (Existing Conditions)



Western Elevation (Existing Conditions)