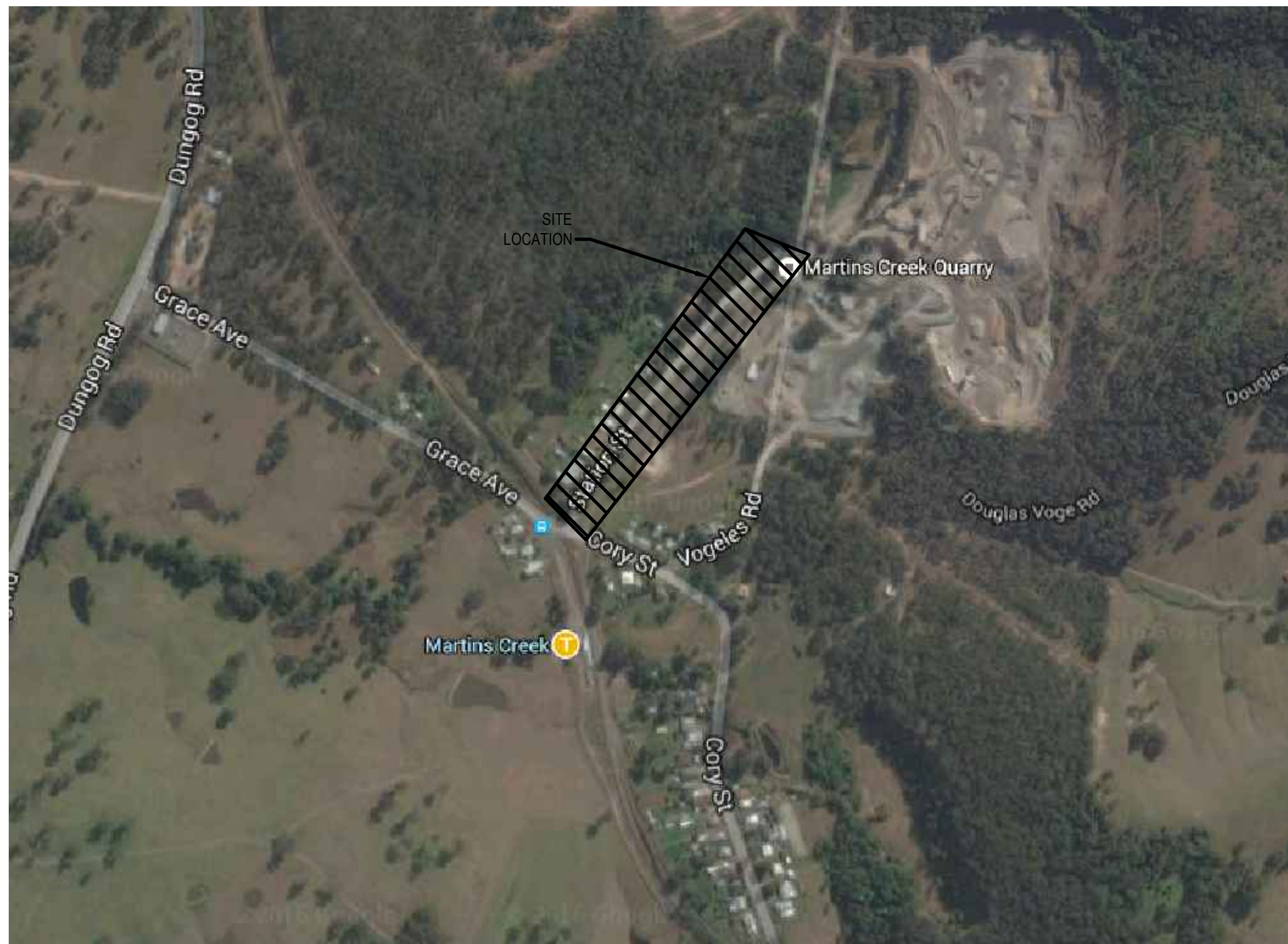


# ACOUSTIC WALL



LOCALITY PLAN  
NOT TO SCALE

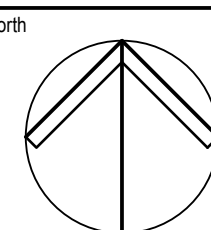
DRAWING SCHEDULE	
DRAWING No.	DESCRIPTION
C200-01	COVER SHEET, LOCALITY PLAN AND DRAWING SCHEDULE
C201-01	CONSTRUCTION NOTES
C202-01	GENERAL ARRANGEMENT PLAN
C202-02	ACOUSTIC WALL DETAILS
C203-01	ACOUSTIC WALL A LONGITUDINAL SECTIONS SHEET 1
C203-02	ACOUSTIC WALL A LONGITUDINAL SECTIONS SHEET 2
C203-03	ACOUSTIC WALL B LONGITUDINAL SECTION
C204-01	EROSION AND SEDIMENT CONTROL PLAN LAYOUT
C204-02	EROSION AND SEDIMENT CONTROL PLAN DETAILS

**CONCEPT ONLY**

NOT FOR CONSTRUCTION

© COPYRIGHT of this design and plan is the property of ACOR Consultants (NSW) Pty Ltd, ACN 152 876 910 ATF The ACOR (NSW) Unit Trust ABN 90 938 224 844, all rights reserved. It must not be used, modified, reproduced or copied wholly or in part without written permission from ACOR Consultants (NSW) Pty Ltd. ACOR Consultants is a trademark licensed to ACOR Consultants (NSW) Pty Ltd by ACOR Consultants Pty Ltd

This drawing has been assigned an electronic code that signifies the drawing has been checked and approved by:

[illegible]

Client	BUTTAI GRAVEL PTY LTD c/- DARACON CONTRACTORS PTY LTD
--------	--



ENGINEERS | MANAGERS | INFRASTRUCTURE PLANNERS | DEVELOPMENT CONSULTANTS

**ACOR Consultants (NSW) Pty Ltd**  
Level 1, 54 Union Street  
Cooks Hill, Newcastle NSW 2300  
T +61 2 4926 4811



Project MARTINS CREEK QUARRY

Drawing Title  
ACOUSTIC WALL LONGITUDINAL SECTION  
SHEET 2

Drawn AJM	Date 24/03/16	Scale N.T.S	A1	Q.A. Check BS	Date 17/05/16
Designed A.I.M	Project No. NE140313			Dwg. No. C200-01	Issue A

May 18, 2016 - 8:31am P:\NE\NE140313-Dragon- Martins Creek Engineering assistance\Drawings\Acoustic Wall\NE140313\_C200-01\_AM.dwg



GENERAL NOTES

1.

THE DRAWING DIMENSIONS SHALL NOT BE OBTAINED BY SCALING.

2.

THESE DRAWINGS SHALL BE READ IN CONJUNCTION WITH THE SPECIFICATION AND WRITTEN INSTRUCTIONS. ANY DISCREPANCY OR VARIATION SHALL BE REFERRED TO THE SUPERINTENDENT BEFORE PROCEEDING WITH THE WORK.

3.

ALL WORK TO BE IN ACCORDANCE WITH DUNGOG SHIRE COUNCIL ENGINEERING REQUIREMENTS FOR DEVELOPMENT, STANDARD DRAWINGS AND SPECIFICATIONS.

4.

NO ADDITIONAL OR P.C. WORKS SHALL BE UNDERTAKEN WITHOUT THE SUPERINTENDENTS APPROVAL. CONFIRM INSTRUCTIONS WITH SUPERINTENDENT.

5.

THE CONTRACTOR MUST ENSURE SUPERINTENDENT APPROVAL OF MATERIALS, PRIOR TO DELIVERY TO SITE.

6.

DIVERSION OF WATER AND THE PROTECTION OF WORKS IS THE CONTRACTORS RESPONSIBILITY.

7.

THE CONTRACTOR HAS SOLE RESPONSIBILITY TO EXERCISE CARE AND TAKE PRECAUTIONS TO ENSURE CONSTRUCTION ACTIVITIES DO NOT AFFECT ADJACENT PROPERTIES, ACCESS OR STRUCTURES. MAINTAIN EMBANKMENTS AND STRUCTURES IN STABLE CONDITION DURING CONSTRUCTION ENSURING NO PART IS OVERSTRESSED. TEMPORARY STRUCTURES, FORMWORK, TEMPORARY BRACING, SHORING AND THE LIKE SHALL BE THE SOLE RESPONSIBILITY OF THE CONTRACTOR.

8.

THE CONTRACTOR WILL BE RESPONSIBLE FOR THE FULL QA DOCUMENTATION OF THE PROJECT TO ENSURE WORKS MEET THE RELEVANT SECTIONS OF AUSPEC. A COMPLETE ITP PLAN SHALL BE SUBMITTED TO THE SUPERINTENDENT FOR APPROVAL PRIOR TO WORKS COMMENCING ON SITE.

9.

CONTRACTOR IS TO VERIFY THE LOCATION OF ALL SERVICES WITH EACH RELEVANT AUTHORITY. ANY DAMAGE TO SERVICES SHALL BE REPAIRED BY THE CONTRACTOR OR THE RELEVANT AUTHORITY AT THE CONTRACTOR'S EXPENSE. SERVICES SHOWN ON THESE PLANS ARE ONLY THOSE EVIDENT AT THE TIME OF SURVEY.

10.

UNDERTAKE WORKS TO PRINCIPLES OF AS 9001. SUBMIT WORK METHOD STATEMENT TO SUPERINTENDENT.

HOLD POINTS SHALL APPLY TO:

- APPROVAL OF WORK METHOD STATEMENT

- APPROVAL OF TRAFFIC CONTROL PLAN

- LOCATION OF INGROUND SERVICES

- SETOUT OF EACH AREA OF WORKS

- CERTIFICATION OF GROUND CONDITIONS

- CONCRETE POUR

- WORK AS EXECUTED SURVEY

- GEOTECHNICAL CERTIFICATION.

11.

ALL WORKS ARE TO BE SETOUT BY A REGISTERED SURVEYOR.

12.

ALL LEVELS SHALL BE OBTAINED FROM ESTABLISHED BENCH MARKS ONLY. STANDARD DATUM FOR ALL DRAWINGS IS AUSTRALIAN HEIGHT DATUM (A.H.D.).

13.

A TRAFFIC CONTROL PLAN TO AS 1742.3 IS TO BE SUBMITTED TO COUNCIL FOR APPROVAL PRIOR TO WORKS COMMENCING.

CONCRETE NOTES

C1.

ALL WORKMANSHIP AND MATERIALS SHALL BE IN ACCORDANCE WITH AS 3600 CURRENT EDITION WITH AMENDMENTS, EXCEPT WHERE VARIED BY THE CONTRACT DOCUMENTS.

C2.

READYMIX CONCRETE SUPPLY SHALL COMPLY WITH AS 1379.

C3.

CONCRETE QUALITY ALL THE REQUIREMENTS OF THE ACSE CONCRETE SPECIFICATION DOCUMENT 1 (EDITION 6) SHALL APPLY TO THE FORMWORK, REINFORCEMENT AND CONCRETE UNLESS NOTED OTHERWISE.

STRUCTURAL ELEMENT	PIERS	CAPS & FOOTINGS	SLABS
EXPOSURE CLASSIFICATION	B2	B2	A2
STRENGTH GRADE DESIGNATION F'c (MPa)	32	32	32
f <sub>cf</sub> (28 DAYS) (mpa)			
MAXIMUM AGGREGATE SIZE (mm)	20	20	20
SLUMP (mm)	80 ± 15	80 ± 15	80 ± 15
CEMENT TYPE			
MAXIMUM W/C RATIO			
MIN. CEMENT CONTENT (kg/m <sup>3</sup> )			
MAXIMUM SHRINKAGE STRAIN ε <sub>cs</sub>			
ADMIXTURES	NONE	NONE	NONE

C4.

PROJECT CONTROL TESTING SHALL BE CARRIED OUT IN ACCORDANCE WITH AS 1012.

C5.

NO ADMIXTURES SHALL BE USED IN CONCRETE UNLESS APPROVED IN WRITING.

C6.

CLEAR CONCRETE COVER TO ALL REINFORCEMENT FOR DURABILITY SHALL BE AS FOLLOWS UNLESS SHOWN OTHERWISE.

EXPOSURE CLASSIFICATION TO AS 3600	CONCRETE GRADE	CAST AGAINST GROUND	CAST IN FORMS AND EXPOSED	CAST IN FORMS AND INTERNAL
A1 & A2	25/32	50mm	30mm	20mm(A1)
B1	25	65mm	50mm	
B1	32	60mm	40mm	
B1	40	50mm	30mm	
B2	40	65mm	45mm	

NOTE:

1.

COVER REQUIREMENTS MAY NEED TO BE INCREASED TO SUIT FIRE RATING

2.

EXPOSURE CLASSIFICATION SHALL BE AS INDICATED ON THE DRAWINGS.

C7.

ALL REINFORCEMENT SHALL BE FIRMLY SUPPORTED ON MILD STEEL PLASTIC TIPPED CHAIRS, PLASTIC CHAIRS OR CONCRETE CHAIRS AT NOT GREATER THAN 1 METRE CENTRES BOTH WAYS. BARS SHALL BE TIED AT ALTERNATE INTERSECTIONS. IN EXPOSURE CONDITIONS GREATER THAN B1 USE ONLY PLASTIC CHAIRS.

C8.

CONCRETE SIZES SHOWN DO NOT INCLUDE THICKNESSES OF APPLIED FINISHES.

C9.

FOR CHAMFERS, DRIP GROOVES, REGLETS, ETC., REFER TO ARCHITECT'S DETAILS, MAINTAIN COVER TO REINFORCEMENT AT THESE DETAILS.

C10.

NO HOLES, CHASES OR EMBEDMENT OF PIPES OTHER THAN THOSE SHOWN ON THE STRUCTURAL DRAWINGS SHALL BE MADE IN CONCRETE MEMBERS WITHOUT THE PRIOR WRITTEN APPROVAL OF THE ENGINEER.

C11.

CONSTRUCTION JOINTS WHERE NOT SHOWN SHALL BE LOCATED TO THE APPROVAL OF THE ENGINEER.

C12.

THE FINISHED CONCRETE SHALL BE A DENSE HOMOGENEOUS MASS, COMPLETELY FILLING THE FORMWORK THOROUGHLY EMBEDDING THE REINFORCEMENT AND FREE OF STONE POCKETS. ALL CONCRETE INCLUDING SLABS ON GROUND AND FOOTINGS SHALL BE COMPACTED WITH MECHANICAL VIBRATORS.

C13.

CURING OF ALL CONCRETE IS TO BE ACHIEVED BY KEEPING SURFACES CONTINUOUSLY WET FOR A PERIOD OF 3 DAYS, AND PREVENTION OF LOSS OF MOISTURE FOR A TOTAL OF 7 DAYS FOLLOWED BY A GRADUAL DRYING OUT. APPROVED SPRAYED ON CURING COMPOUNDS THAT COMPLY WITH AS 3799 MAY BE USED WHERE FLOOR FINISHES WILL NOT BE AFFECTED (REFER MANUFACTURER'S SPECIFICATION). POLYTHENE SHEETING OR WET HESSIAN MAY BE USED TO RETAIN CONCRETE MOISTURE WHERE NOT PROTECTED FROM WIND AND TRAFFIC.

CONCRETE NOTES CONT'

C14.

CONSTRUCTION SUPPORT PROPPING IS TO BE LEFT IN PLACE WHERE NEEDED TO AVOID OVERSTRESSING THE STRUCTURE DUE TO CONSTRUCTION LOADING. NO BRICKWORK OR PARTITION WALLS ARE TO BE CONSTRUCTED ON SUSPENDED LEVELS UNTIL ALL PROPPING IS REMOVED AND THE SLAB HAS ABSORBED ITS DEAD LOAD DEFLECTION.

C15.

THE ENGINEER SHALL BE GIVEN 24 HOURS NOTICE FOR REINFORCEMENT INSPECTION AND CONCRETE SHALL NOT BE DELIVERED UNTIL FINAL APPROVAL OBTAINED.

C16.

CONDUITS, PIPES ETC., SHALL ONLY BE LOCATED IN THE MIDDLE ONE THIRD OF SLAB DEPTH AND SPACED AT NOT LESS THAN 3 DIAMETERS. PIPES OR CONDUITS SHALL NOT BE PLACED WITHIN THE COVER TO REINFORCEMENT.

C17.

REINFORCEMENT SYMBOLS:

N

DENOTES DEFORMED RIBBED BARS, GRADE 500MPa, NORMAL DUCTILITY, NOMINATED BAR SIZE TO AS 4671 U.N.O. eg. N16

R

DENOTES ROUND BARS, GRADE 250MPa, NORMAL DUCTILITY, NOMINATED BAR SIZE TO AS 4671 eg. R10

SL

DENOTES SQUARE MESH, DEFORMED RIBBED BARS, GRADE 500MPa, LOW DUCTILITY, NOMINATED BAR SIZE AND SPACING TO AS 4671, U.N.O. eg. SL92 - 9mm BARS @ 200mm CENTRES

RL

DENOTES RECTANGULAR MESH, DEFORMED RIBBED BARS, GRADE 500MPa, LOW DUCTILITY, NOMINATED BAR SIZE AND SPACING TO AS 4671 U.N.O. eg. RL1018 - 10mm BARS @ 100mm CENTRES, 8mm BARS @ 200mm CENTRES

TM

DENOTES TRENCH MESH, DEFORMED RIBBED BARS, GRADE 500MPa, LOW DUCTILITY, NOMINATED BAR SIZE TO AS 4671 U.N.O. eg. 3-L11TM - 3 11mm BARS @100mm CENTRES LONGITUDINALLY AND CROSS BARS @ 300mm CENTRES

NUMBER OF BARS IN GROUP

BAR GRADE AND TYPE

NOMINAL BAR SIZE IN mm

SPACING IN mm

17 N 20 - 250

C18.

REINFORCEMENT IS REPRESENTED DIAGRAMMATICALLY AND NOT NECESSARILY IN TRUE PROJECTION.

C19.

SLAB REINFORCEMENT SHALL EXTEND AT LEAST 65mm ONTO MASONRY SUPPORT WALLS AND 50 PERCENT OF BOTTOM REINFORCEMENT SHALL BE COGGED TO ACHIEVE ANCHORAGE AT SIMPLY SUPPORTED ENDS.

C20.

SPLICES IN REINFORCEMENT SHALL BE MADE ONLY IN POSITIONS SHOWN OR OTHERWISE APPROVED IN WRITING BY THE ENGINEER. LAPS SHALL BE IN ACCORDANCE WITH AS 3600 AND NOT LESS THAN THE DEVELOPMENT LENGTH FOR EACH BAR.

C21.

SITE BENDING OF DEFORMED REINFORCING BARS SHALL BE DONE WITHOUT HEATING USING MECHANICAL BENDING TOOLS.

C22.

WELDING OF REINFORCEMENT SHALL NOT BE PERMITTED UNLESS SHOWN ON THE STRUCTURAL DRAWINGS OR APPROVED BY THE ENGINEER.

C23.

JOGGLES TO BAR SHALL BE 1 BAR DIAMETER OVER A LENGTH OF 12 BAR DIAMETERS.

C24.

FABRIC SHALL BE LAPPED 2 TRANSVERSE WIRES PLUS 50mm. BUNDLED BARS SHALL BE TIED TOGETHER AT 30 BAR DIAMETER CENTRES WITH 3 WRAPS OF THE WIRE.

C25.

WHERE TRANSVERSE TIE BARS ARE NOT SHOWN PROVIDE N12-400 SPLICED WHERE NECESSARY AND LAP WITH MAIN BARS 400mm U.N.O.

C26.

PROVIDE UPWARD CAMBER TO FORMWORK OF REINFORCED CONCRETE CANTILEVERS OF L/120, WHERE L IS THE PROJECTION BEYOND COLUMN OR WALL FACE, AND TO FORMWORK OF SLABS WHERE NOTED ON PLAN. MAINTAIN THE SLAB AND BEAM DEPTHS SHOWN.

C27.

SLABS AND BEAM SHALL BE CONSTRUCTED TO BEAR ONLY ON THE BEAMS, WALLS, COLUMNS, ETC SHOWN ON THE DRAWINGS. ALL OTHER BUILDING ELEMENTS SHALL BE KEPT 15mm MINIMUM CLEAR FROM SOFFITS OF STRUCTURE.

C28.

REINFORCING LAP/COG LENGTHS

CONCRETE NOTES CONT'

C28.

REINFORCING LAP/COG LENGTHS

BAR Ø	LAP (mm)	COG
N12	500	IN ACCORDANCE WITH AS 3600
N16	600	
N20	900	
N24	1200	
N28	1500	
N32	1800	
N36	2100	

UNLESS NOTED OTHERWISE

C29.

GROUT TO BE 30MPa NON-SHRINK POURABLE GROUT. ALL BLOCKOUTS TO BE REMOVED PRIOR TO INSTALLING GROUT. GROUT AS PART OF BASE PLATE GROUTING.

C30.

ALL SLABS TO BE POURED ON WATERPROOF MEMBRANE UNO. WATERPROOF MEMBRANE TO BE 0.2mm THICK PLASTIC MEMBRANE UNO. WATERPROOF MEMBRANE NOT REQUIRED WHERE CONCRETE BLINDING IS USED.

© COPYRIGHT of this design and plan is the property of ACOR Consultants (NNSW) Pty Ltd, ACN 152 876 910 ATF The ACOR (NNSW) Unit Trust ABN 90 938 224 844, all rights reserved. It must not be used, modified, reproduced or copied wholly or in part without written permission from ACOR Consultants (NNSW) Pty Ltd. ACOR Consultants is a trademark licensed to ACOR Consultants (NNSW) Pty Ltd by ACOR Consultants Pty Ltd.

This drawing has been assigned an electronic code that signifies the drawing has been checked and approved by:

B	PRELIMINARY ISSUE	17/05/16	AJM	BS
A	PRELIMINARY ISSUE	1/4/16	AJM	BS
Issue	Description	Date	Drawn	Approved
1				

Client  
**BUTTAI GRAVEL PTY LTD**  
**c/- DARACON CONTRACTORS PTY LTD**

**ACOR Consultants (NNSW) Pty Ltd**  
Level 1, 54 Union Street  
Cooks Hill, Newcastle NSW 2300  
T +61 2 4926 4811

ENGINEERS | MANAGERS | INFRASTRUCTURE PLANNERS | DEVELOPMENT CONSULTANTS

Project  
**MARTINS CREEK QUARRY**

Drawing Title  
CONSTRUCTION NOTES

Drawn	Date	Scale	A1	Q.A. Check	Date
AJM	24/03/16	N.T.S			
Designed	Project No.	Dwg. No.	Issue		
AJM	NE140313	C201-01	A		

CONCEPT ONLY

NOT FOR CONSTRUCTION

Project File Name: E0115 - Martins Creek Quarry - Engineering - Infrastructure Drawings/Accessories/NE140313\_C201-01\_AJM.dwg  
May 19, 2016 - 1:36pm



CIVIL LEGEND PROPOSED	
	ACOUSTIC WALL ALIGNMENT
	RAILWAY LINE

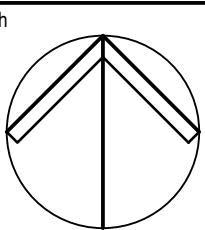


SCALE 1:1000 @ A1  
SCALE 1:2000 @ A3

© COPYRIGHT of this design and plan is the property of ACOR Consultants (NNSW) Pty Ltd, ACN 152 876 910 ATF The ACOR (NNSW) Unit Trust ABN 90 938 224 844, all rights reserved. It must not be used, modified, reproduced or copied wholly or in part without written permission from ACOR Consultants (NNSW) Pty Ltd. ACOR Consultants is a trademark licensed to ACOR Consultants (NNSW) Pty Ltd by ACOR Consultants Pty Ltd.

This drawing has been assigned an electronic code that signifies the drawing has been checked and approved by:

B	PRELIMINARY ISSUE	17/05/16	AJM	BS	
A	PRELIMINARY ISSUE	24/03/16	AJM	BS	
Issue	Description	Date	Drawn	Approved	
1					



Client

BUTTAI GRAVEL PTY LTD  
c/- DARACON CONTRACTORS PTY LTD



ACOR Consultants (NNSW) Pty Ltd  
Level 1, 54 Union Street  
Cooks Hill, Newcastle NSW 2300  
T +61 2 4926 4811



ENGINEERS | MANAGERS | INFRASTRUCTURE PLANNERS | DEVELOPMENT CONSULTANTS

Project

MARTINS CREEK QUARRY

Drawing Title

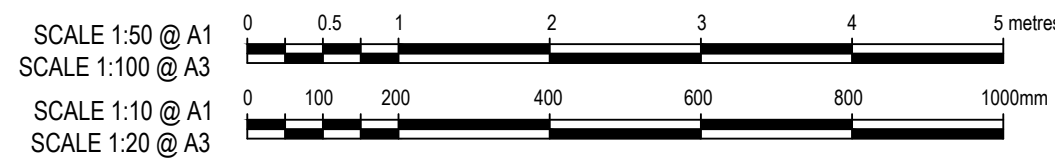
ACOUSTIC WALL ARRANGEMENT PLAN

Drawn	Date	Scale	A1	Q.A. Check	Date
AJM	24/03/16	1:1000		BS	17/05/16
Designed	Project No.	Dwg. No.		Issue	
AJM	NE140313	C202-01		B	

CONCEPT ONLY

NOT FOR CONSTRUCTION

Project File Path: C:\Users\ACOR\Documents\Projects\NE140313\ACOR\NE140313\_01\_A1.dwg  
May 19, 2016 8:43:31 AM



This drawing has been assigned an electronic code that signifies the drawing has been checked and approved by

[illegible]

Client

BUTTAI GRAVEL PTY LTD  
c/- DARACON CONTRACTORS PTY LTD



**ACOR Consultants (NNSW) Pty Ltd**  
Level 1, 54 Union Street  
Cooks Hill, Newcastle NSW 2300  
T +61 2 4926 4811



Project  
**MARTINS CREEK QUARRY**

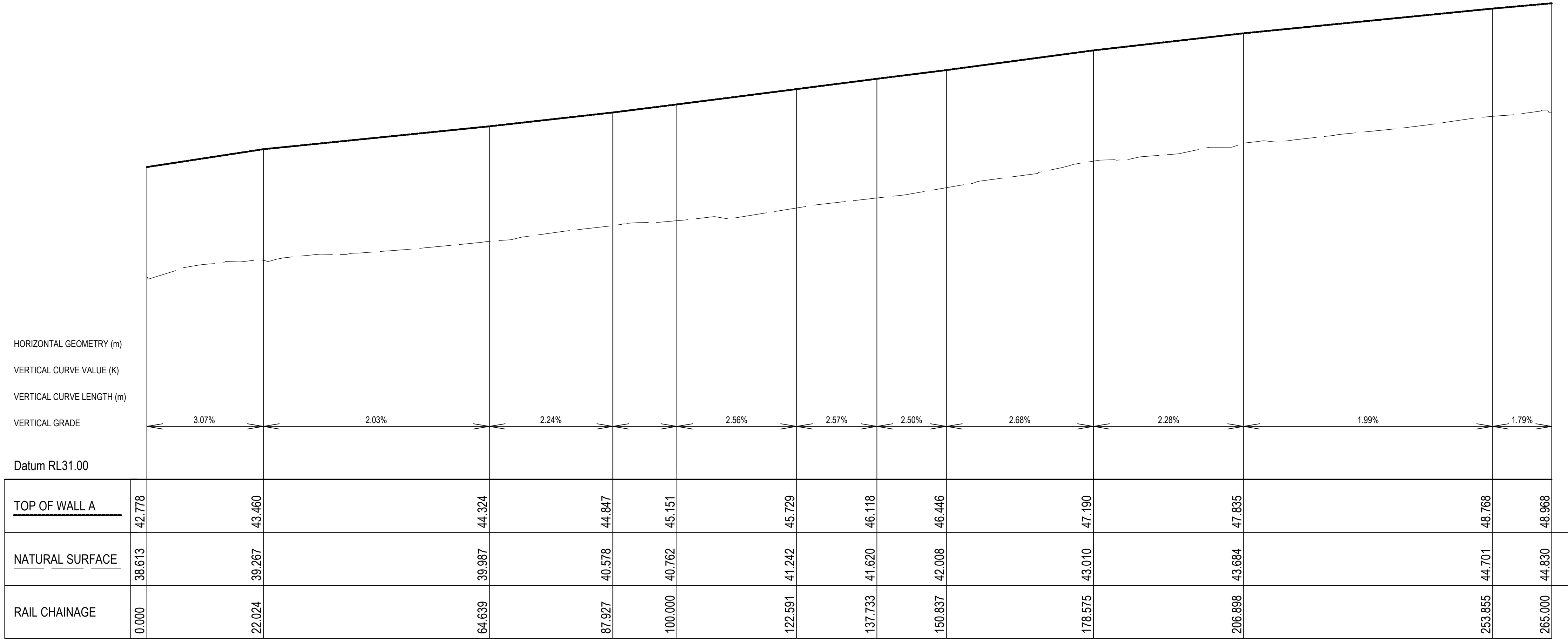
## Drawing Title

Drawn AJM	Date 24/03/16	Scale AS SHOWN	A1 Q.A. Check BS	Date 17/05/16
Designed AJM	Project No. NE140313		Dwg. No. C202-02	Issue B

**CONCEPT ONLY**

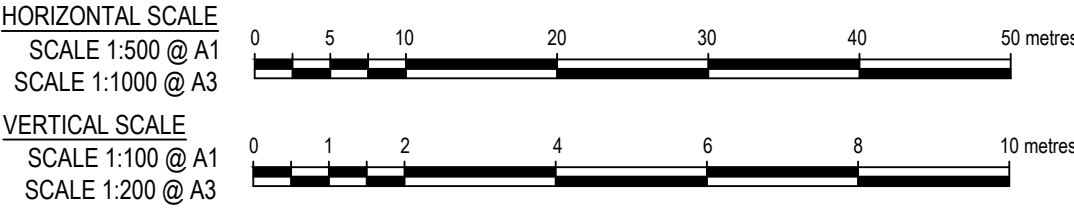
[NOT FOR CONSTRUCTION]





ACOUSTIC WALL A LONGITUDINAL SECTION 1

HORIZONTAL SCALE 1:500  
VERTICAL SCALE 1:100



© COPYRIGHT of this design and plan is the property of ACOR Consultants (NNSW) Pty Ltd, ACN 152 876 910 ATF The ACOR (NNSW) Unit Trust ABN 90 938 224 844, all rights reserved. It must not be used, modified, reproduced or copied wholly or in part without written permission from ACOR Consultants (NNSW) Pty Ltd. ACOR Consultants is a trademark licensed to ACOR Consultants (NNSW) Pty Ltd by ACOR Consultants Pty Ltd.

This drawing has been assigned an electronic code that signifies the drawing has been checked and approved by:

B		PRELIMINARY ISSUE		17/05/16	AJM BS
A		PRELIMINARY ISSUE		24/03/16	AJM BS
Issue	Description	Date	Drawn	Approved	
1	0	10m at full scale	100m	200m	

Client

BUTTAI GRAVEL PTY LTD  
c/- DARACON CONTRACTORS PTY LTD



ACOR Consultants (NNSW) Pty Ltd

Level 1, 54 Union Street  
Cooks Hill, Newcastle NSW 2300  
T +61 2 4926 4811



Project

MARTINS CREEK QUARRY

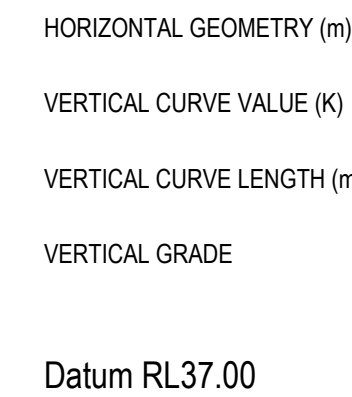
Drawing Title  
ACOUSTIC WALL A LONGITUDINAL SECTION  
SHEET 1

Drawn	Date	Scale	A1	Q.A. Check	Date
AJM	24/03/16	1:500, 1:100	BS	BS	17/05/16
Designed	Project No.	Dwg. No.	Issue		
AJM	NE140313	C203-01	A		

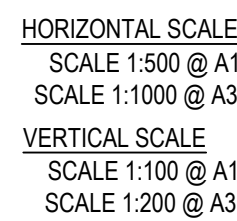
CONCEPT ONLY

NOT FOR CONSTRUCTION

Project: NE140313 - Martins Creek Quarry Acoustic Wall A Longitudinal Section  
Drawing: NE140313-01  
Date: 17/05/16  
Scale: 1:500, 1:100  
Author: AJM  
Checked: BS  
Approved: BS



HORIZONTAL SCALE 1:500  
VERTICAL SCALE 1:100



This drawing has been assigned an electronic code that signifies the drawing has been checked and approved by		Client
---	--	--------

This drawing has been assigned an electronic code that signifies the drawing has been checked and approved by:					
B	PRELIMINARY ISSUE	17/05/16	AJM	BS	
A	PRELIMINARY ISSUE	24/03/16	AJM	BS	
Issue	Description	Date	Drawn	Approved	

Client  
BUTTAI GRAVEL PTY LTD  
c/- DARACON CONTRACTORS PTY LTD



**ACOR Consultants (NNSW) Pty Ltd**  
Level 1, 54 Union Street  
Cooks Hill, Newcastle NSW 2300  
T +61 2 4926 4811

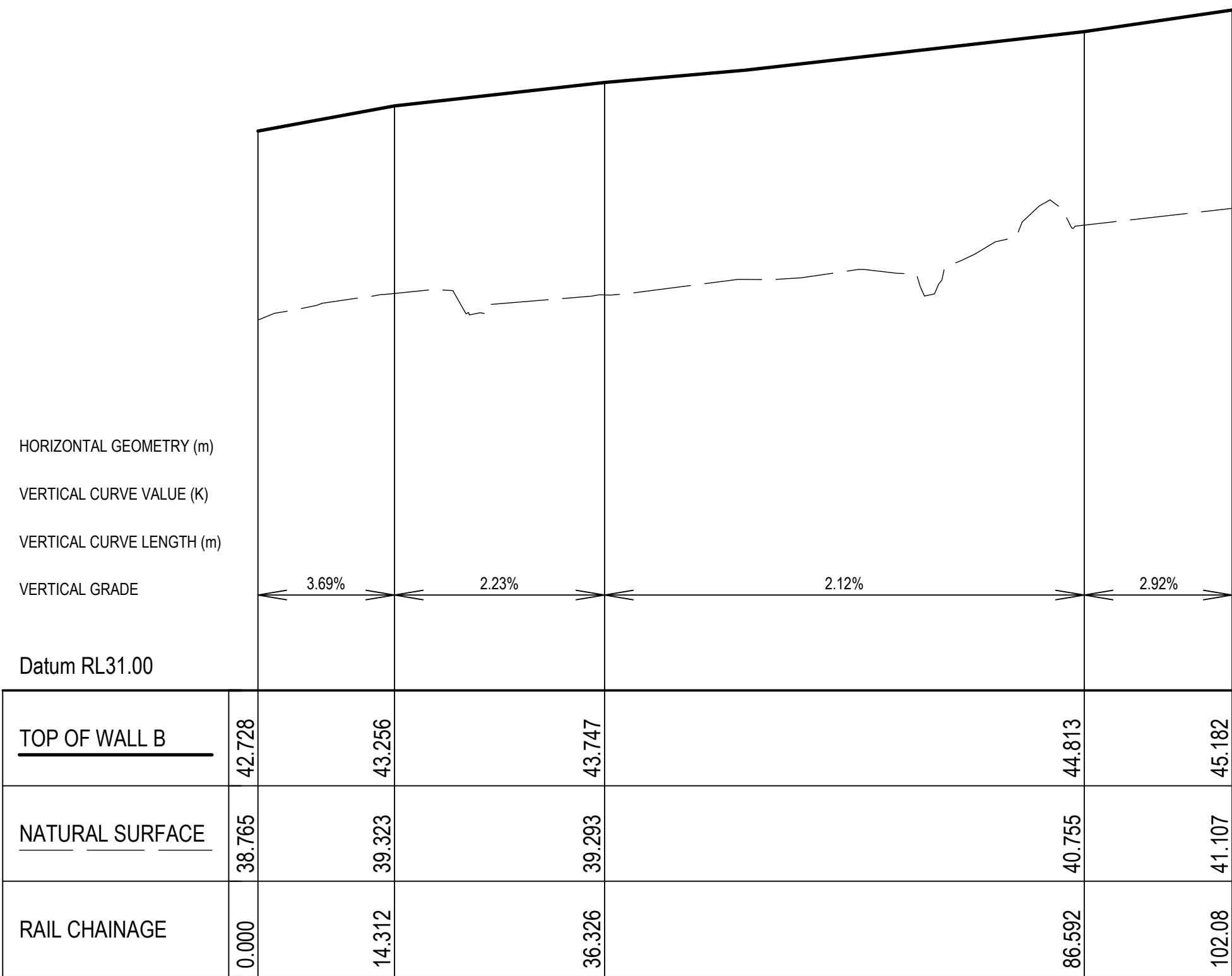
Project MARTINS CREEK QUARRY

Drawing Title  
ACOUSTIC WALL A LONGITUDINAL SECTION  
SHEET 2

Drawn AJM	Date 24/03/16	Scale A1 1:500, 1:100	Q.A. Check BS	Date 17/05/16
Designed AJM	Project No. NE140313		Dwg. No. C203-02	Issue A

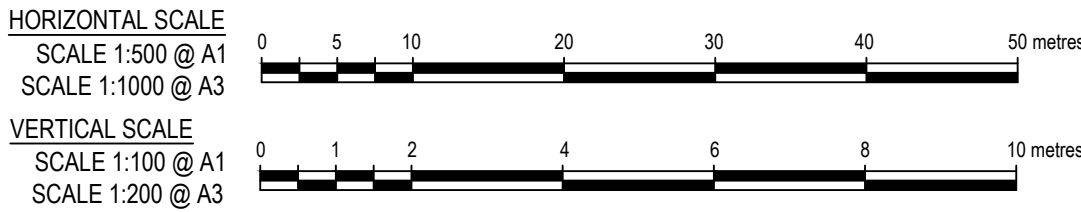
## CONCEPT ONLY

NOT FOR CONSTRUCTION



ACOUSTIC WALL B LONGITUDINAL SECTION

HORIZONTAL SCALE 1:500  
VERTICAL SCALE 1:100



© COPYRIGHT of this design and plan is the property of ACOR Consultants (NNSW) Pty Ltd, ACN 152 876 910 ATF The ACOR (NNSW) Unit Trust ABN 90 938 224 844, all rights reserved. It must not be used, modified, reproduced or copied wholly or in part without written permission from ACOR Consultants (NNSW) Pty Ltd. ACOR Consultants is a trademark licensed to ACOR Consultants (NNSW) Pty Ltd by ACOR Consultants Pty Ltd.

This drawing has been assigned an electronic code that signifies the drawing has been checked and approved by:

B	PRELIMINARY ISSUE	17/05/16	AJM	BS	
A	PRELIMINARY ISSUE	1/04/16	AJM	BS	
Issue	Description	Date	Drawn	Approved	

Client

BUTTAI GRAVEL PTY LTD  
c/- DARACON CONTRACTORS PTY LTD



ACOR Consultants (NNSW) Pty Ltd  
Level 1, 54 Union Street  
Cooks Hill, Newcastle NSW 2300  
T +61 2 4926 4811



Project

MARTINS CREEK QUARRY

Drawing Title  
ACOUSTIC WALL B LONGITUDINAL SECTION

Drawn	Date	Scale	A1	Q.A. Check	Date
AJM	24/03/16	1:500, 1:100	BS		17/05/16
Designed	Project No.	Dwg. No.	Issue		
AJM	NE140313	C203-03	A		

CONCEPT ONLY

NOT FOR CONSTRUCTION

Project: NE140313 - Martins Creek Quarry Acoustic Wall B Longitudinal Section  
Drawing: NE140313-03-00  
Scale: 1:500, 1:100  
Date: 17/05/16  
Issue: A