

# MASTERPLAN



# DESIGN PROPOSAL

SITE 68 PUBLIC DOMAIN INITIATIVES

Our proposal approach seeks to build an intimate and vibrant community park with a strong community, environmental and landscape focus.

The public domain and landscape solution proposes:

/ The proposed underpass link (separate DA) between Australia Avenue and Site 68 development (via the Site 3 Pocket park) provides a new and direct equitable access from Sydney Olympic Park railway station and town centre through to Bicentennial Park and the future Parkview Precinct.

/ A direct pedestrian and cycle connection is created to link the proposed underpass with the existing bridge crossing Australia Avenue, fully conforming to Ausroads cycle guidelines.

/ Existing cycleway connectivity is retained, linking the site to the existing Bennelong Parkway cycle route to the North and beneath the Australia Avenue railway bridge, also connecting to the new Land Bridge(Separate DA).

/ The new pedestrian land bridge over Bennelong Parkway provides a new, wider landscaped bridge offering increased amenity as well as strengthening the landscaped connection to Bicentennial Park (separate DA).

/ The relocation of the existing stormwater basin on Site 68 to a new below grade detention tank which sits beneath the proposed landscaping on Site 68. This approach is further described in the Alluvium report.

/ Water collected by the detention tank is pumped through biofiltration wetlands (1,200m<sup>2</sup>) integrated into the landscape design and visible to the public.

/ The wetlands offer an exploration walk for public interaction and educational interpretation; describing the environmental process taking place and the sustainability outcomes being achieved.

/ The site water harvesting processes are celebrated using a cascading waterfall and wetland ponds creating a powerful new identity for both the Parkview Precinct and Sydney Olympic Park.

/ New on-street parking on the southern side of the new street creates opportunities for short-term parking for the child care, as well as access to the neighbourhood park and wetland interpretation.

/ A vehicular drop-off to both the residential building and child care is integrated into the landscape as a 'shared way'

/ The tree planting strategy is focussed on native trees (Eucalypts, Melaleuca and some Casuarina) located around the perimeter (including associated bioretention area); with a relaxed and eclectic combination of Eucalypts , rainforest natives, relocated palms, Jacaranda and deciduous species concentrated in the new central neighbourhood zone.

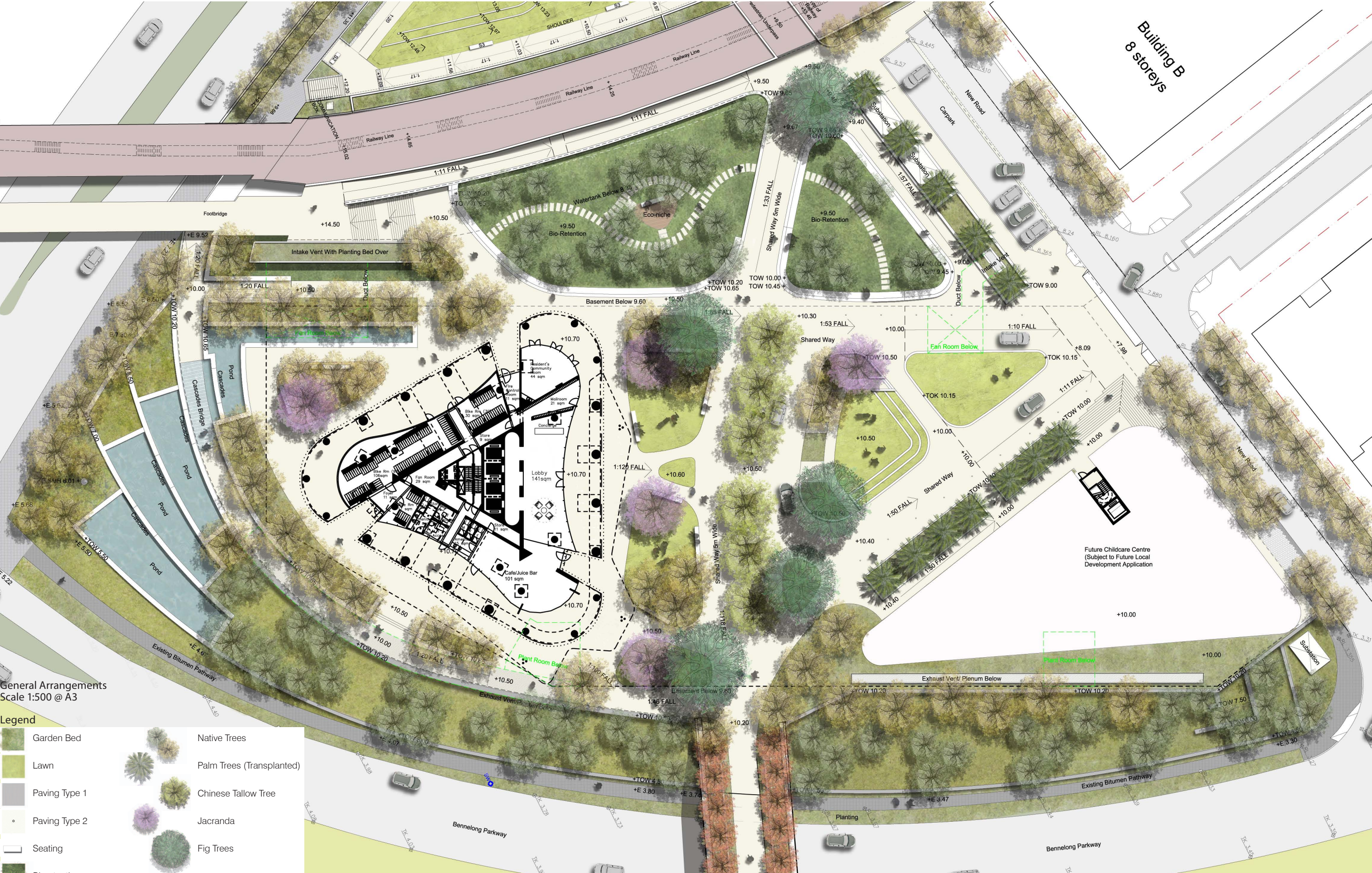
Note: The existing palm trees currently located on the corner of Australia Avenue and Bennelong Parkway are relocated to the new neighbourhood park, lining the new street and child care.

To assist in wind mitigation, wherever practicable, evergreen trees are located in close proximity to all three facades.

Understorey plantings will support the tree canopy in zones of wind influence; plantings will comprise groundcover and low-medium shrubs that at all times maintain eye level views essential for CPTED.



PROPOSED SITE 68 - GENERAL ARRANGEMENTS



General Arrangements  
Scale 1:500 @ A3

Legend

	Garden Bed		Native Trees
	Lawn		Palm Trees (Transplanted)
	Paving Type 1		Chinese Tallow Tree
	Paving Type 2		Jacranda
	Seating		Fig Trees
	Bioretention		







View from Australia Avenue & Bennelong Parkway intersection looking across Site 68







View across Site 68, looking south towards proposed cafe

