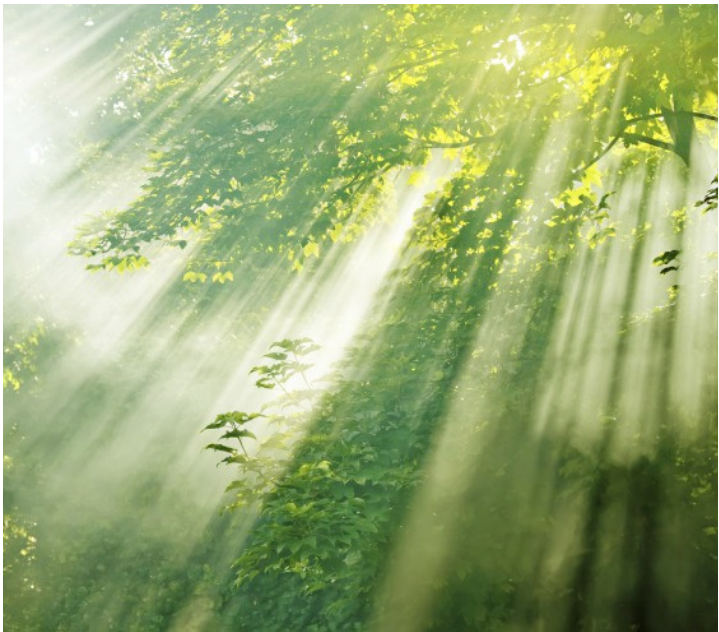
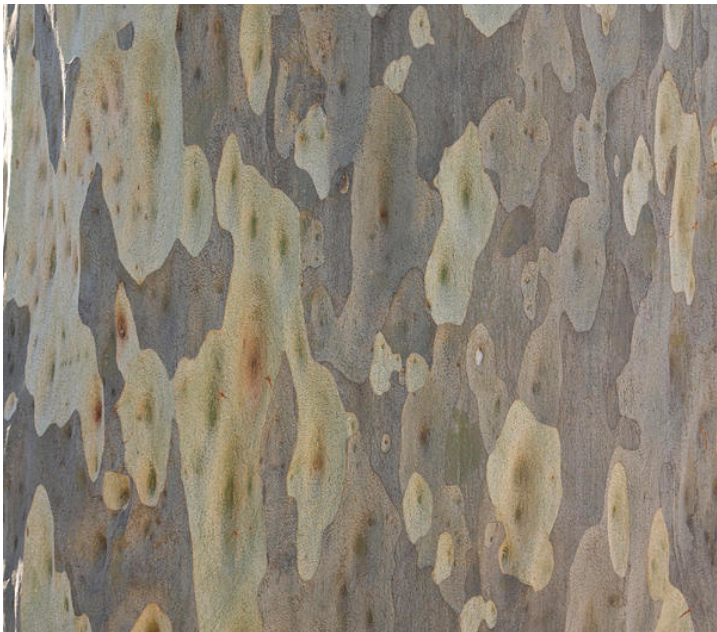






# 7.0 MATERIALS + FAÇADE ELEMENTS

*SEPP65 Principle 10: Aesthetics states: Quality aesthetics require the appropriate composition of building elements, textures, materials and colours and reflect the use, internal design and structure of the development. Aesthetics should respond to the environment and context, particularly to desirable elements of the existing streetscape or, in precincts undergoing transition, contribute to the desired future character of the area.*



## 7.1 MATERIALS

Our aim has been to create a residential character that is inviting and sophisticated. To achieve this we have used a restrained palette of natural materials and hues that are inspired by the location of the tower between Bicentennial Park and the more urban setting of Sydney Olympic Park town centre. The materials used are three shades of terracotta, glass, aluminium and off form concrete. The terracotta is used as a series of horizontal spandrels which express the single storey residential scale. Horizontal anodised aluminium fins provide shade and rain protection to the façade. Off form concrete columns complement the natural materials at the base of the tower, and relate to the materiality of other structures in Sydney Olympic Park.

