

# Surface Design

ABN: 19 570 343 498  
Suite 11.03, 68 York Street  
SYDNEY, NSW, 2000  
info@surfacedesign.com.au  
Ph: (02) 9249 1400

28 January 2015

Stephen Gouge  
JBA Planning  
Level 7, 77 Berry Street  
North Sydney, NSW, 2059

Project No. 13158

Dear Stephen,

## RE: Frasers Broadway – Block 1, Proposed profiled cladding

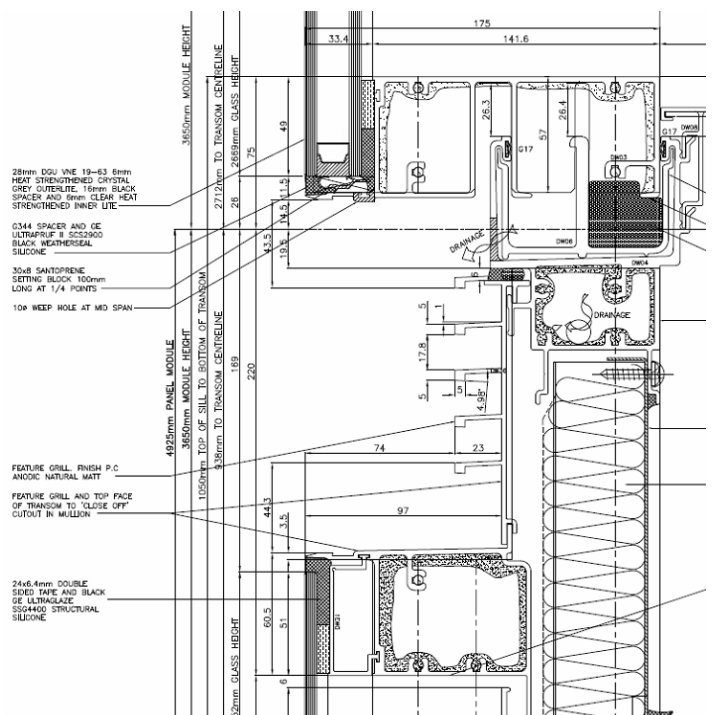
The proposed profiled cladding for the Block 1 development consists of horizontal profiled aluminium cladding which follows a regular, repeated profile over a height of approximately 350mm. In order to achieve the Architectural intent in a consistent profile it is proposed to fabricate the cladding by means of aluminium extrusion which will be detailed to interlock into adjacent panels to conceal fixings to the structure behind the cladding.

The use of aluminium extrusions allows the cladding to be installed in long lengths (~3m) reducing the amount of vertical joints in the cladding.

The use of exposed profiled cladding has recently been used on the Darling Quarter development as a spandrel feature (refer image to the right):

The cladding on Block 1 has been detailed with sufficient fall on the profiles to prevent water ponding and dust accumulation, the spacing of the profiles is small enough to prevent birds nesting.

To achieve the radiused corners to the building it is proposed that the corners are constructed with die cast aluminium profiles, equal in height to the aluminium extrusion. This method provides a consistent corner appearance avoiding the need to roll form the complex cladding shape. Both extrusion and castings will be coated in a wet paint application (powder coat or similar) to achieve consistent colour between the sections.



Regards,

Gavin McPherson  
Façade Engineer  
Surface Design

Ph: (02) 9249 1408;  
E: g.mcpherson@surfacedesign.com.au