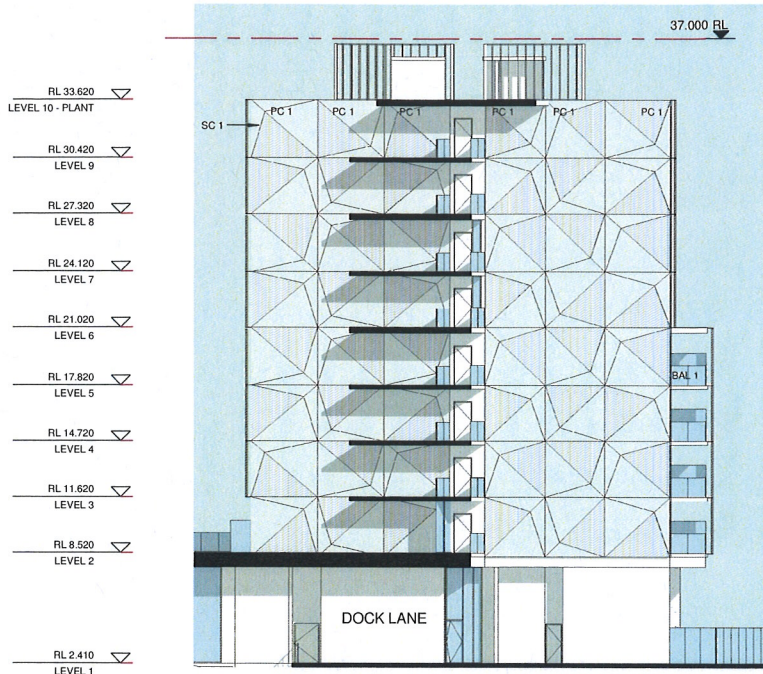


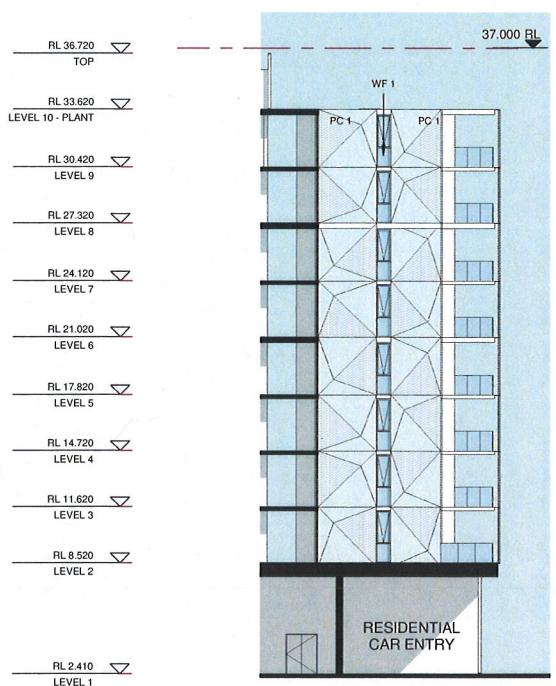
1 CC1 ELEVATION SECTION

1 : 200



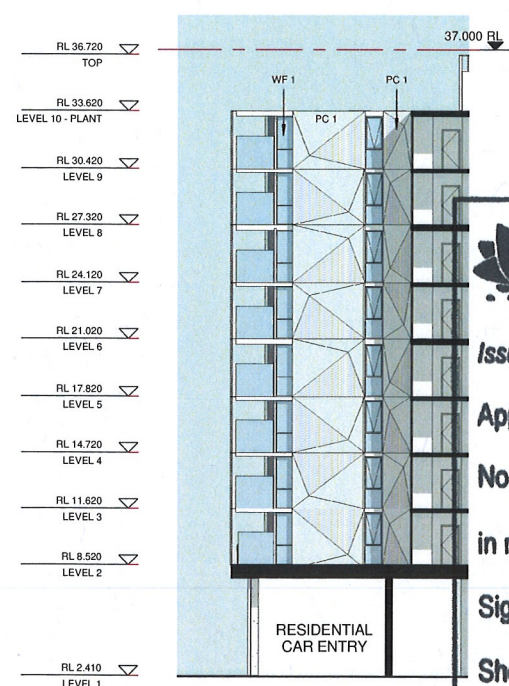
2 CC2 ELEVATION SECTION

1 : 200



3 CC3 ELEVATION SECTION

1 : 200



4 CC4 ELEVATION SECTION

1 : 200

**NSW GOVERNMENT**  
Planning

Issued under the Environmental Planning and Assessment Act 1979

Approved Section 96 (1A) (1) (2) Modification Application

No. 2 granted on the 23 July 2015

in respect to MP SSD 6387

Signed [Signature]

Sheet No. 33 of 43

**IONIC MANAGEMENT PTY. LTD**  
LEVEL 37, CHIFLEY TOWER, 2 CHIFLEY SQUARE  
SYDNEY 2000  
P: 02 8513 6540  
cym@ionic.net.au

**PAYCE CONSOLIDATED LTD**  
LEVEL 37, CHIFLEY TOWER, 2 CHIFLEY SQUARE  
SYDNEY 2000  
P: 02 8080 2300  
F: 02 8080 2399  
recs@payce.com.au

**stanisic architects**  
Level 2 243 Liverpool Street  
East Sydney NSW 2010  
T (61 2) 9358 2508  
E info@stanisic.com.au  
ABN 1100263481

**HDR RICE DAUBNEY**

**PROJECT**  
SOPA  
"DOCK" 1 BURROWAY RD  
WENTWORTH POINT, THE WHARF SITE  
SYDNEY OLYMPIC PARK

**DRAWING TITLE**  
TRUE ELEVATIONS  
ELEVATION BUILDING CUTS

**SCALE** (ORIGINAL SIZE A1)  
1 : 200

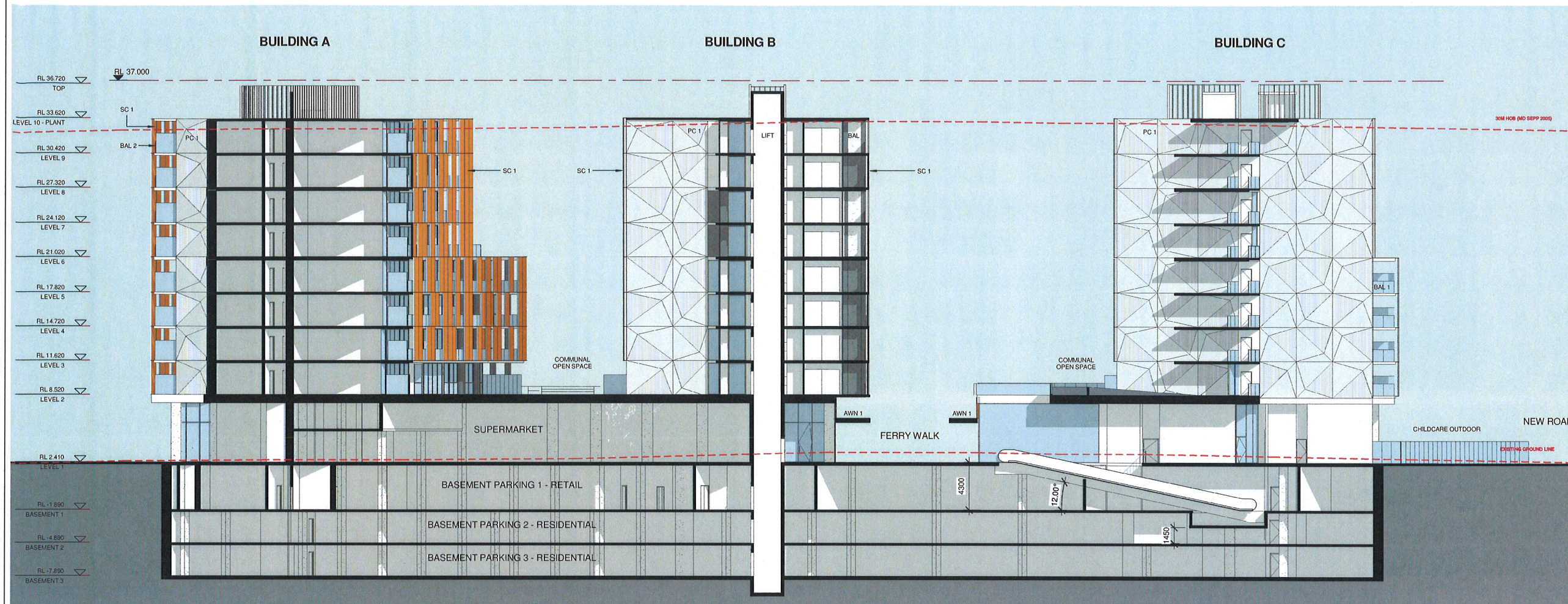
**CHECKED**  
JN

**PROJECT NUMBER**  
14 003

**DRAWING NUMBER**  
DA 1557

**ISSUE**  
J



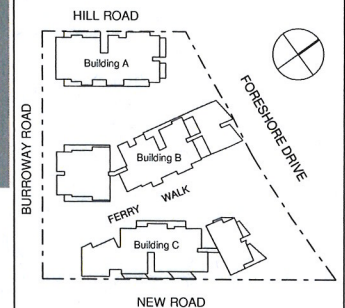


Stanisic architects is the owner of the copyright subsisting in these drawings, plans, designs and specifications. They must not be used, reproduced or copied, in whole or in part, nor may the information, ideas and concepts therein contained (which are confidential to Stanisic architects) be disclosed to any person without the prior written consent of that company.

REV	DESCRIPTION OF CHANGE	DATE
H	DA REVISION	05.09.14
I	DA REVISION	28.10.14
J	S96 ISSUE	01.05.15

#### LEGEND

AWN 1	ALUMINIUM SOFFIT AWNING SILVER
AWN 2	SUN SHADING DEVICE TO CHILD CARE CENTRE OUTDOOR PLAY AREA
BAL 1	OPAQUE WHITE GLASS BALUSTRADE
BAL 2	CLEAR GLASS BALUSTRADE
BAL 4	CHILDPROOF FRAMELESS GLASS BALUSTRADE TO CHILD CARE CENTRE
P 1	PAINT FINISH - DULUX P14B1Q 'GREY PEBBLE' QUARTER STR
PC 1	GROOVED PRECAST CONCRETE PANEL PAINT FINISH
PC 3	CONCRETE PAINT FINISH TO MATCH WF1
SC 1	PERFORATED ANODISED ALUMINIUM VERTICAL LOUVRED SCREEN
SC 2	UNIVERSAL ANODISED 'ORIENTAL GOLD' PERFORATED VERTICAL LOUVRED SCREEN
SC 3	ANODISED ALUMINIUM FINISH
SC 4	CHILD CARE CENTRE PERIMETER SCREEN
WF 1	ROOF PLANT SCREEN
WF 4	WINDOW FRAMES - INTERPON D2015 ULTRIVA ASTEROID PEARL MATT Y270A



1 SECTION  
SECTION LOOKING NORTH TO FORESHORE DRIVE 1 : 200

**NSW GOVERNMENT Planning**

Issued under the Environmental Planning and Assessment Act 1979

Approved Section 96 (1A) (1) (2) Modification Application

No. 2 granted on the 23 July 2015

in respect to MP SSD 6387

Signed *[Signature]*

Sheet No. 34 of 43

PROJECT MANAGER	IONIC MANAGEMENT PTY. LTD	<b>ionic</b> ionic management pty ltd
LEVEL 37, CHIFLEY TOWER, 2 CHIFLEY SQUARE SYDNEY 2000	P: 02 8313 0240 cryan@ionic.net.au	
CLIENT	PAYCE CONSOLIDATED LTD	<b>PAYCE</b>
LEVEL 37, CHIFLEY TOWER, 2 CHIFLEY SQUARE SYDNEY 2000	P: 02 8060 2300 F: 02 8060 2199 reception@payce.com.au	
ARCHITECTS	stanisic architects	
Level 2 243 Liverpool Street East Sydney NSW 2010 T (61 2) 9558 2368 E info@stanisic.com.au ABN 11002633481		
	<b>HDR</b>   RICE DAUBNEY	
PROJECT	SOPA "DOCK" 1 BURROWAY RD WENTWORTH POINT, THE WHARF SITE SYDNEY OLYMPIC PARK	
DRAWING TITLE	SECTION	
SCALE: (ORIGINAL SIZE A1)	1 : 200	CHECKED: JN
PROJECT NUMBER	DRAWING NUMBER	ISSUE:
14 003	DA 1601	J

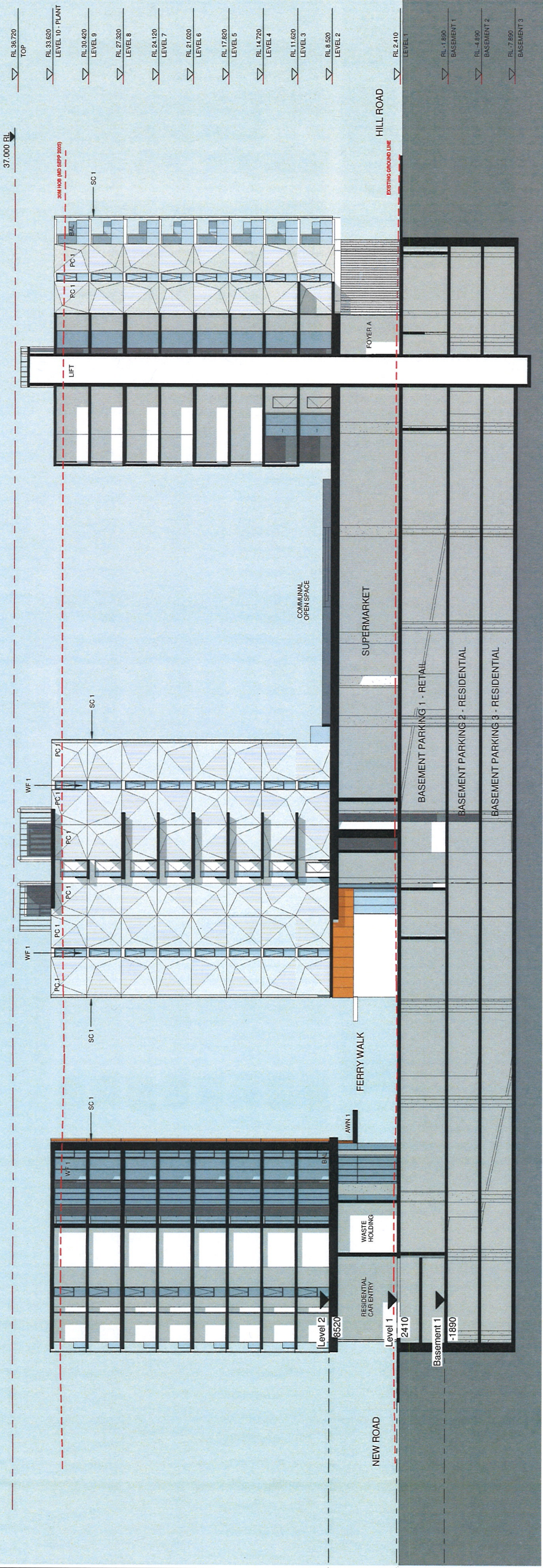


NORTH POINT

BUILDING A

BUILDING C

BUILDING B



37.000 RL

LEVEL 10 - PLANT

LEVEL 9

LEVEL 8

LEVEL 7

LEVEL 6

LEVEL 5

LEVEL 4

LEVEL 3

LEVEL 2

LEVEL 1

LEVEL 0

LEVEL -1

LEVEL -2

LEVEL -3

LEVEL -4

LEVEL -5

LEVEL -6

LEVEL -7

LEVEL -8

LEVEL -9

LEVEL -10

LEVEL -11

LEVEL -12

LEVEL -13

LEVEL -14

LEVEL -15

LEVEL -16

LEVEL -17

LEVEL -18

LEVEL -19

LEVEL -20

LEVEL -21

LEVEL -22

LEVEL -23

LEVEL -24

LEVEL -25

LEVEL -26

LEVEL -27

LEVEL -28

LEVEL -29

LEVEL -30

LEVEL -31

LEVEL -32

LEVEL -33

LEVEL -34

LEVEL -35

LEVEL -36

LEVEL -37

LEVEL -38

LEVEL -39

LEVEL -40

LEVEL -41

LEVEL -42

LEVEL -43

LEVEL -44

LEVEL -45

LEVEL -46

LEVEL -47

LEVEL -48

LEVEL -49

LEVEL -50

LEVEL -51

LEVEL -52

LEVEL -53

LEVEL -54

LEVEL -55

LEVEL -56

LEVEL -57

LEVEL -58

LEVEL -59

LEVEL -60

LEVEL -61

LEVEL -62

LEVEL -63

LEVEL -64

LEVEL -65

LEVEL -66

LEVEL -67

LEVEL -68

LEVEL -69

LEVEL -70

LEVEL -71

LEVEL -72

LEVEL -73

LEVEL -74

LEVEL -75

LEVEL -76

LEVEL -77

LEVEL -78

LEVEL -79

LEVEL -80

LEVEL -81

LEVEL -82

LEVEL -83

LEVEL -84

LEVEL -85

LEVEL -86

LEVEL -87

LEVEL -88

LEVEL -89

LEVEL -90

LEVEL -91

LEVEL -92

LEVEL -93

LEVEL -94

LEVEL -95

LEVEL -96

LEVEL -97

LEVEL -98

LEVEL -99

LEVEL -100

LEVEL -101

LEVEL -102

LEVEL -103

LEVEL -104

LEVEL -105

LEVEL -106

LEVEL -107

LEVEL -108

LEVEL -109

LEVEL -110

LEVEL -111

LEVEL -112

LEVEL -113

LEVEL -114

LEVEL -115

LEVEL -116

LEVEL -117

LEVEL -118

LEVEL -119

LEVEL -120

LEVEL -121

LEVEL -122

LEVEL -123

LEVEL -124

LEVEL -125

LEVEL -126

LEVEL -127

LEVEL -128

LEVEL -129

LEVEL -130

LEVEL -131

LEVEL -132

LEVEL -133

LEVEL -134

LEVEL -135

LEVEL -136

LEVEL -137

LEVEL -138

LEVEL -139

LEVEL -140

LEVEL -141

LEVEL -142

LEVEL -143

LEVEL -144

LEVEL -145

LEVEL -146

LEVEL -147

LEVEL -148

LEVEL -149

LEVEL -150

LEVEL -151

LEVEL -152

LEVEL -153

LEVEL -154

LEVEL -155

LEVEL -156

LEVEL -157

LEVEL -158

LEVEL -159

LEVEL -160

LEVEL -161

LEVEL -162

LEVEL -163

LEVEL -164

LEVEL -165

LEVEL -166

LEVEL -167

LEVEL -168

LEVEL -169

LEVEL -170

LEVEL -171

LEVEL -172

LEVEL -173

LEVEL -174

LEVEL -175

LEVEL -176

LEVEL -177

LEVEL -178

LEVEL -179

LEVEL -180

LEVEL -181

LEVEL -182

LEVEL -183

LEVEL -184

LEVEL -185

LEVEL -186

LEVEL -187

LEVEL -188

LEVEL -189

LEVEL -190

LEVEL -191

LEVEL -192

LEVEL -193

LEVEL -194

LEVEL -195

LEVEL -196

LEVEL -197

LEVEL -198

LEVEL -199

LEVEL -200

LEVEL -201

LEVEL -202

LEVEL -203

LEVEL -204

LEVEL -205

LEVEL -206

LEVEL -207

LEVEL -208

LEVEL -209

LEVEL -210

LEVEL -211

LEVEL -212

LEVEL -213

LEVEL -214

LEVEL -215

LEVEL -216

LEVEL -217

LEVEL -218

LEVEL -219

LEVEL -220

LEVEL -221

LEVEL -222

LEVEL -223

LEVEL -224

LEVEL -225

LEVEL -226

LEVEL -227

LEVEL -228

LEVEL -229

LEVEL -230

LEVEL -231

LEVEL -232

LEVEL -233

LEVEL -234

LEVEL -235

LEVEL -236

LEVEL -237

LEVEL -238

LEVEL -239

LEVEL -240

LEVEL -241

LEVEL -242

LEVEL -243

LEVEL -244

LEVEL -245

LEVEL -246

LEVEL -247

LEVEL -248

LEVEL -249

LEVEL -250

LEVEL -251

LEVEL -252

LEVEL -253

LEVEL -254

LEVEL -255

LEVEL -256

LEVEL -257

LEVEL -258

LEVEL -259

LEVEL -260

LEVEL -261

LEVEL -262

LEVEL -263

LEVEL -264

LEVEL -265

LEVEL -266

LEVEL -267

LEVEL -268

LEVEL -269

LEVEL -270

LEVEL -271

LEVEL -272

LEVEL -273

LEVEL -274

LEVEL -275

LEVEL -276

LEVEL -277

LEVEL -278

LEVEL -279

LEVEL -280

LEVEL -281

LEVEL -282

LEVEL -283

LEVEL -284

LEVEL -285

LEVEL -286

LEVEL -287

LEVEL -288

LEVEL -289

LEVEL -290

LEVEL -291

LEVEL -292

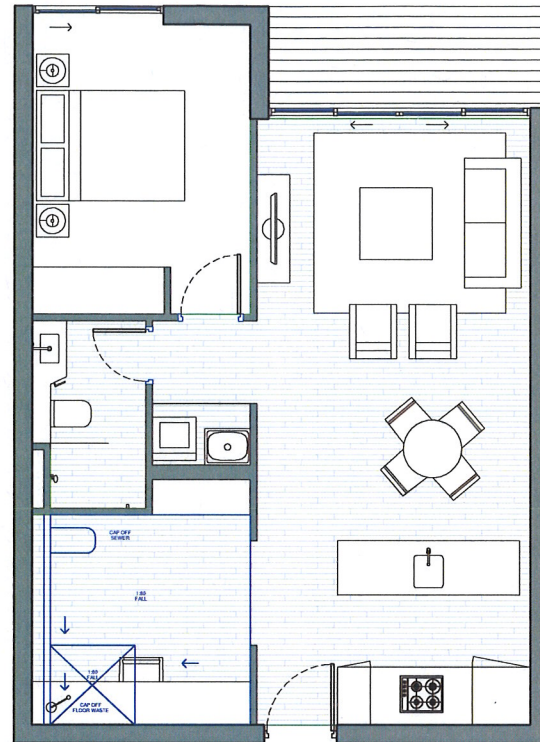
LEVEL -293

LEVEL -294

LEVEL -295

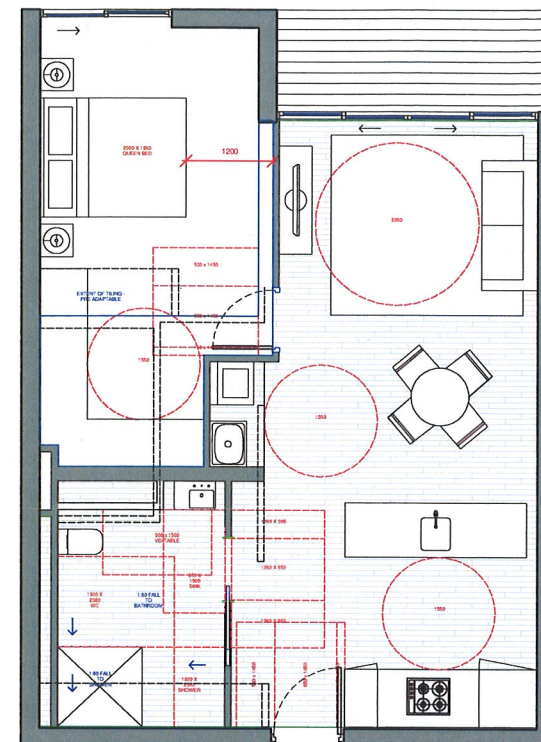
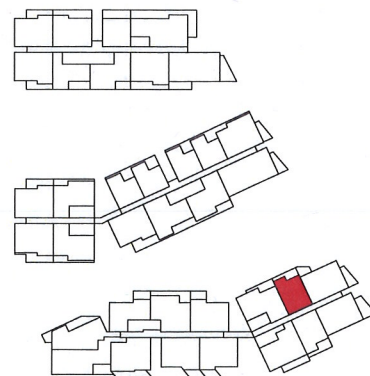
LEVEL -296





1 PLAN  
TYPE A PRE ADAPTATION

1 : 50



2 PLAN  
TYPE A POST ADAPTATION

1 : 50

LEGEND

ADAPTABLE APARTMENTS LEGEND  
B BATHROOM. REFER TO GA PLANS FOR BATHROOM TYPES.  
B1, 2... BEDROOM 1, 2, ETC.  
LY LAUNDRY. REFER TO GA PLANS FOR LAUNDRY TYPES.  
D DINING AREA.  
ST STUDY AREA.  
EN ENSUITE. REFER TO GA PLANS FOR ENSUITE TYPES.  
R ROSE.  
S STORAGE AREA. REFER TO GA PLANS FOR DETAILS.  
SD SLIDING DOOR. REFER TO WINDOW SCHEDULES FOR DETAILS.  
L LIVING AREA.  
K KITCHEN. REFER TO GA PLANS FOR KITCHEN TYPES.  
BY BALCONY.  
CY COURTYARD.  
NOTE A, B... NOTES. REFER TO ACCESSIBLE UNITS SPECIFICATION FOR DETAILS AND REQUIREMENTS.  
WIR WALK IN ROBE.  
NOTE G... NOTE G. BEDROOM CLEARANCES AS AGREED WITH ACCESSIBLE CONSULTANT.  
ADDITIONAL CAPPED OFF SERVICE POINT AT SLAB LEVEL FOR ACCESSIBLE WATER CLOSET.  
ADDITIONAL CAPPED OFF SERVICE POINT AT SLAB LEVEL FOR KITCHEN SINK.  
ADDITIONAL CAPPED OFF SERVICE POINT AT SLAB LEVEL FOR ACCESSIBLE VANITY BASIN.  
ADDITIONAL CAPPED OFF SERVICE POINT AT SLAB LEVEL FOR ACCESSIBLE SHOWER ROSE AND MIXERS.  
ADDITIONAL CAPPED OFF SERVICE POINT.

NOTES:  
1. ADAPTABLE UNITS TO COMPLY WITH THE ACCESSIBILITY REPORT AND AUSTRALIAN STANDARDS OUTLINE IN THE SCHEDULE.  
2. THRESHOLD FROM INTERNAL UNITS TO BALCONY TO BE LOW-LEVEL AND COMPLY WITH AS 4299.  
3. REFER TO ARCHITECTURAL GENERAL ARRANGEMENT PLANS FOR BATHROOM, KITCHEN, LAUNDRY TYPES.  
4. REFER TO WALL ELEMENT SCHEDULE DRAWINGS FOR ALL WALL TYPES.  
5. REFER TO WINDOW SCHEDULE DRAWINGS FOR ALL WINDOW TYPE, EXTENTS AND DETAILS.  
6. REFER TO DRAWING ( ) FOR ACCESSIBLE UNITS NOTES, REQUIREMENTS AND SPECIFICATION.  
7. ALL ADAPTABLE BATHROOMS AND KITCHENS TO HAVE ADDITIONAL SERVICES IN PLACE PRE-ADAPTATION.  
8. SERVICES TO BE CAPPED READY FOR POST-ADAPTATION. ALL BALCONIES TO HAVE MAXIMUM STEP DOWNS OF 35mm. REFER TO ARCHITECTURAL GENERAL ARRANGEMENT PLANS FOR BALCONY/COURTYARD EXTENTS.  
9. WALLS SURROUNDING SHOWER RECESS AND PAN REINFORCED TO ACCOMMODATE FUTURE NEED OF A FOLDING SHOWER SEATS AND GRAB RAILS.  
10. ALL ADAPTABLE UNITS TO HAVE SLIP-RESISTANT FLOOR SURFACES (KITCHEN, BATHROOMS, ENSUITE, LAUNDRY, BALCONY AND COURTYARD) TO COMPLY WITH AS 4299 AND PRESENT APPROPRIATE CERTIFICATION FOR APPROVAL.  
11. TILING WATERPROOFING FOR EXTENDED KITCHEN AND WET AREAS TO BE PROVIDED PRIOR TO POST-ADAPTATION.  
12. REFER TO ACCESSIBLE UNITS SPECIFICATION FOR ALL NOTES ON THE DRAWINGS AND DETAIL REQUIREMENTS.  
13. POWER FOR WALL OVER TO BE LOCATED FOR POST ADAPTATION LAYOUT.  
14. ADAPTABLE UNITS PREPARED BY HDR/RICE DAUBNEY. DETAIL TO FURTHER DESIGN DEVELOPMENT.  
15.

NORTH POINT

Stanisic architects is the owner of the copyright subsisting in these drawings, plans, designs and specifications. They must not be used, reproduced or copied, in whole or in part, nor may the information, ideas and concepts therein contained (which are confidential to Stanisic architects) be disclosed to any person without the prior written consent of that company.

REV	DESCRIPTION OF CHANGE	DATE
H	S90 ISSUE	01.05.15

**NSW GOVERNMENT Planning**

Issued under the Environmental Planning and Assessment Act 1979

Approved Section 96 (1A) (1) (2) Modification Application

No. .... 2 ..... granted on the 23 July 2015.

in respect to MP.SSD.6387

Signed.....

Sheet No. 36 of 43

PROJECT MANAGER  
**IONIC MANAGEMENT PTY. LTD**  
LEVEL 37, CHIFLEY TOWER, 2 CHIFLEY SQUARE  
SYDNEY 2000  
P: 02 9313 0240  
cryan@ionic.net.au

CLIENT  
**PAYCE CONSOLIDATED LTD**  
LEVEL 37, CHIFLEY TOWER, 2 CHIFLEY SQUARE  
SYDNEY 2000  
P: 02 8080 2300  
F: 02 8080 2399  
nccp@payce.com.au

ARCHITECTS  
**stanisic architects**  
Level 2 243 Liverpool Street  
East Sydney NSW 2010  
T: (61 2) 9358 2588  
E: info@stanisic.com.au  
ABN 11002633481

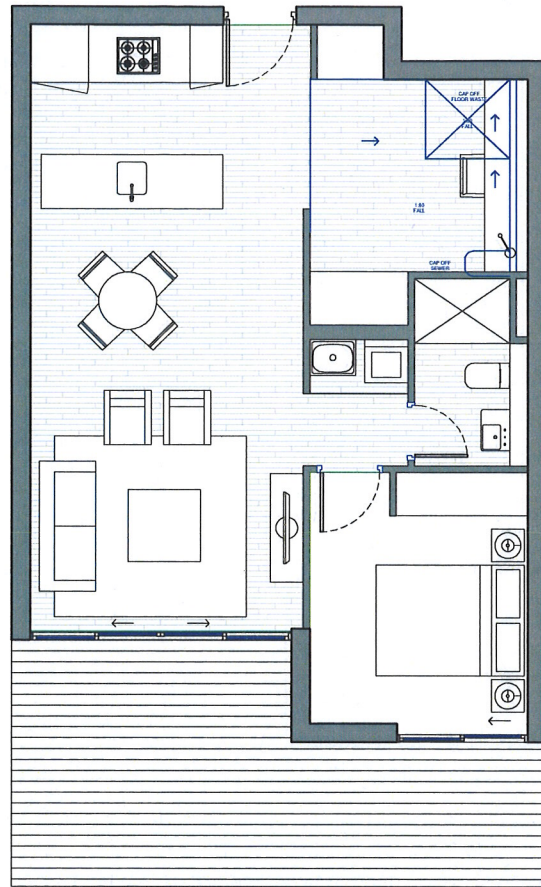
**HDR | RICE DAUBNEY**

PROJECT  
**SOPA "DOCK" 1 BURROWAY RD**  
WENTWORTH POINT, THE WHARF SITE  
SYDNEY OLYMPIC PARK

DRAWING TITLE  
**TYPE A PRE & POST ADAPTATION PLANS**

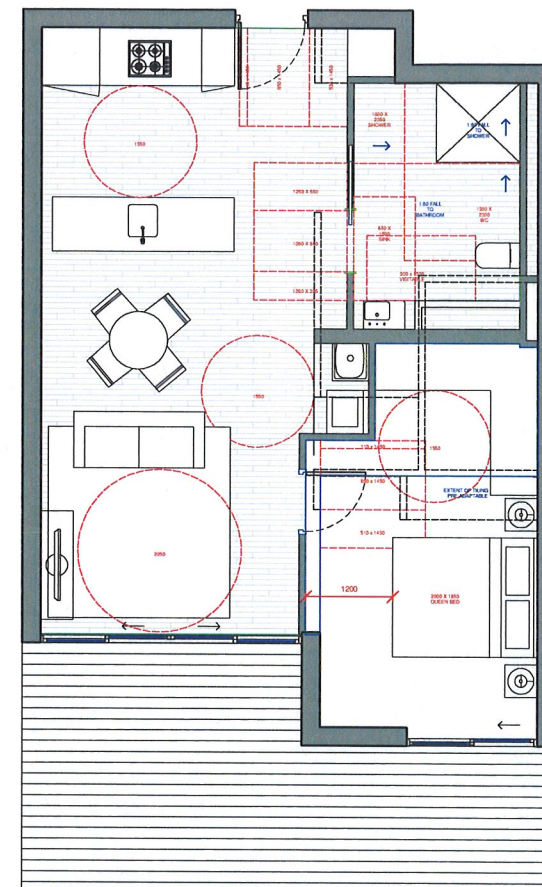
SCALE: [ORIGINAL SIZE A1]	CHECKED:
As indicated	JN
PROJECT NUMBER	DRAWING NUMBER
14 003	DA 3101
	ISSUE
	H





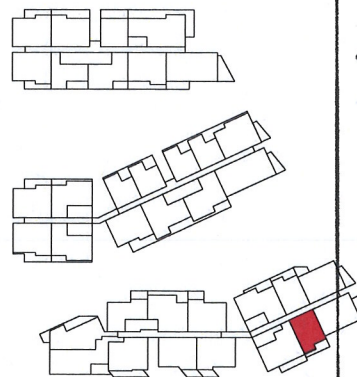
1 PLAN  
TYPE B PRE ADAPTATION

1 : 50



2 PLAN  
TYPE B POST ADAPTATION

1 : 50



**NSW GOVERNMENT Planning**

Issued under the Environmental Planning and Assessment Act 1979

Approved Section 96 (1A) (1) (2) Modification Application

No. 2 granted on the 23 July 2015

In respect to MP SSD 6387

Signed [Signature]

Sheet No. 37 of 43

LEGEND

- ADAPTABLE APARTMENTS LEGEND
- B BATHROOM. REFER TO GA PLANS FOR BATHROOM TYPES.
- B1, 2 BEDROOM 1, 2, ETC.
- LY LAUNDRY. REFER TO GA PLANS FOR LAUNDRY TYPES.
- D DINING AREA
- ST STUDY AREA
- EN ENSUITE. REFER TO GA PLANS FOR ENSUITE TYPES.
- R ROBE
- S STORAGE AREA. REFER TO GA PLANS FOR DETAILS.
- SD SLIDING DOOR. REFER TO WINDOW SCHEDULES FOR DETAILS.
- L LIVING AREA
- K KITCHEN. REFER TO GA PLANS FOR KITCHEN TYPES.
- BY BALCONY
- CY COURTYARD
- NOTES. REFER TO ACCESSIBLE UNITS SPECIFICATION FOR DETAILS AND REQUIREMENTS
- WIR WALK IN ROBE
- NOTE G. BEDROOM CLEARANCES AS AGREED WITH ACCESSIBLE CONSULTANT
- ADDITIONAL CAPPED OFF SERVICE POINT AT SLAB LEVEL FOR ACCESSIBLE WATER CLOSET
- ADDITIONAL CAPPED OFF SERVICE POINT AT SLAB LEVEL FOR KITCHEN SINK
- ADDITIONAL CAPPED OFF SERVICE POINT AT SLAB LEVEL FOR ACCESSIBLE VANITY BASIN
- ADDITIONAL CAPPED OFF SERVICE POINT AT SLAB LEVEL FOR ACCESSIBLE SHOWER ROSE AND MIXERS
- ADDITIONAL CAPPED OFF SERVICE POINT

- NOTES:
- ADAPTABLE UNITS TO COMPLY WITH THE ACCESSIBILITY REPORT AND AUSTRALIAN STANDARDS OUTLINE IN THE SCHEDULE.
  - THRESHOLD FROM INTERNAL UNITS TO BALCONY TO BE LOW-LEVEL AND COMPLY WITH AS 4299.
  - REFER TO ARCHITECTURAL GENERAL ARRANGEMENT PLANS FOR BATHROOM, KITCHEN, LAUNDRY TYPES.
  - REFER TO WALL ELEMENT SCHEDULE DRAWINGS FOR ALL WALL TYPES.
  - REFER TO WINDOW SCHEDULE DRAWINGS FOR ALL WINDOW TYPE, EXTENTS AND DETAILS.
  - REFER TO DRAWING ( ) FOR ACCESSIBLE UNITS NOTES, REQUIREMENTS AND SPECIFICATION.
  - ALL ADAPTABLE BATHROOMS AND KITCHENS TO HAVE ADDITIONAL SERVICES IN PLACE PRE-ADAPTATION.
  - SERVICES TO BE CAPPED READY FOR POST-ADAPTATION. ALL BALCONIES TO HAVE MAXIMUM STEP DOWNS OF 35mm. REFER TO ARCHITECTURAL GENERAL ARRANGEMENT PLANS FOR BALCONY/ COURTYARD EXTENTS.
  - WALLS SURROUNDING SHOWER RECESS AND PAN REINFORCED TO ACCOMMODATE FUTURE NEED OF A FOLDING SHOWER SEATS AND GRAB RAILS.
  - ALL ADAPTABLE UNITS TO HAVE SLIP-RESISTANT FLOOR SURFACES (KITCHEN, BATHROOMS, ENSUITE, LAUNDRY, BALCONY AND COURTYARD) TO COMPLY WITH AS 4299 AND PRESENT APPROPRIATE CERTIFICATION FOR APPROVAL.
  - TILING/ WATERPROOFING FOR EXTENDED KITCHEN AND WET AREAS TO BE PROVIDED PRIOR TO POST-ADAPTATION. REFER TO ACCESSIBLE UNITS SPECIFICATION FOR ALL NOTES ON THE DRAWINGS AND DETAIL REQUIREMENTS.
  - POWER FOR WALL OVEN TO BE LOCATED FOR POST ADAPTATION LAYOUT. ADAPTABLE UNITS PREPARED BY HDR/ RICE DAUBNEY, DETAIL TO FURTHER DESIGN DEVELOPMENT.

STANISIC ARCHITECTS IS THE OWNER OF THE COPYRIGHT SUBSISTING IN THESE DRAWINGS, PLANS, DESIGNS AND SPECIFICATIONS. THEY MUST NOT BE USED, REPRODUCED OR COPIED, IN WHOLE OR IN PART, NOR MAY THE INFORMATION, IDEAS AND CONCEPTS THEREIN CONTAINED (WHICH ARE CONFIDENTIAL TO STANISIC ARCHITECTS) BE DISCLOSED TO ANY PERSON WITHOUT THE PRIOR WRITTEN CONSENT OF THAT COMPANY.

REV	DESCRIPTION OF CHANGE	DATE
H	DA REVISION	05.08.14
I	586 ISSUE	01.05.15

PROJECT MANAGER  
**IONIC MANAGEMENT PTY. LTD**



LEVEL 37, CHIFLEY TOWER, 2 CHIFLEY SQUARE  
SYDNEY 2000

P: 02 9213 0240  
cryan@ionic.net.au

CLIENT

**PAYCE CONSOLIDATED LTD**



LEVEL 37, CHIFLEY TOWER, 2 CHIFLEY SQUARE  
SYDNEY 2000

P: 02 8080 2300  
F: 02 8080 2399  
reception@payce.com.au

ARCHITECTS:

**stanisic architects**  
Level 2 243 Liverpool Street  
East Sydney NSW 2010  
T (61 2) 9356 2588  
E info@stanisic.com.au  
ABN 11002633481

**HDR RICE DAUBNEY**

PROJECT  
**SOPA**  
"DOCK" 1 BURROWAY RD  
WENTWORTH POINT, THE WHARF SITE  
SYDNEY OLYMPIC PARK

DRAWING TITLE  
**TYPE B PRE & POST ADAPTATION PLANS**

SCALE: (ORIGINAL SIZE A1)  
As indicated

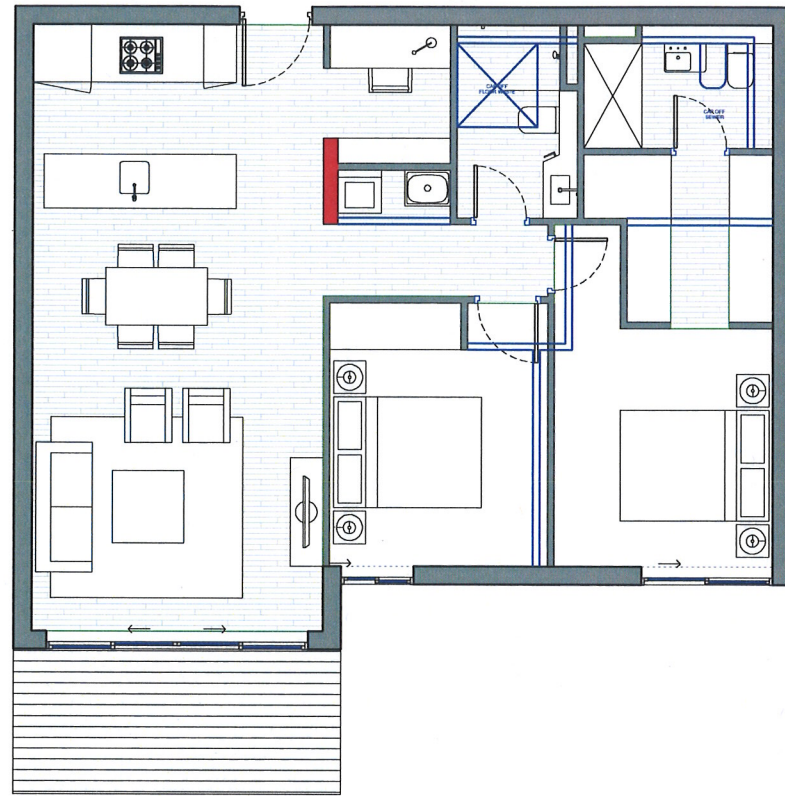
CHECKED:  
JN

PROJECT NUMBER  
14 003

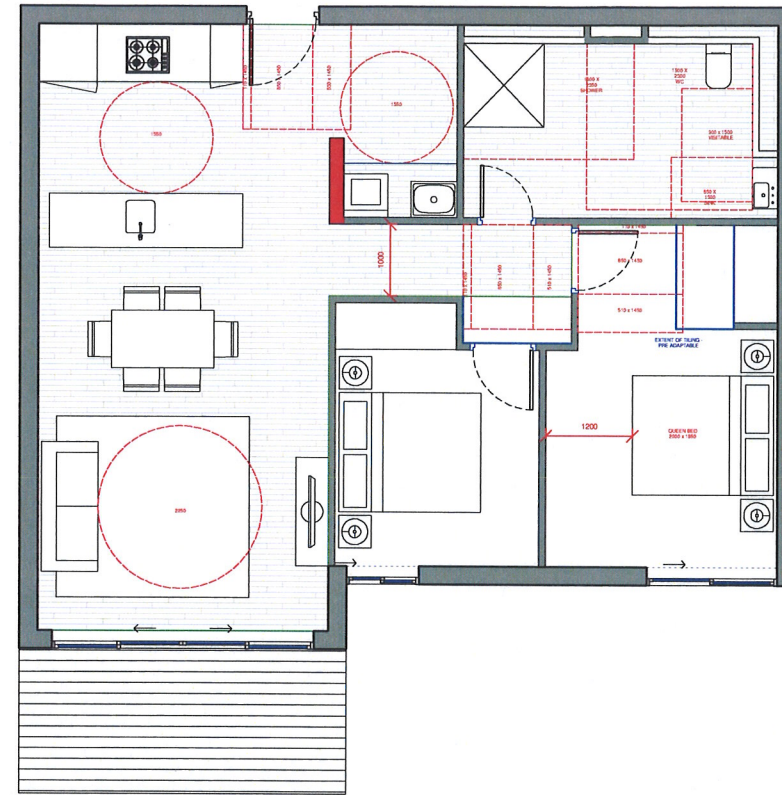
DRAWING NUMBER  
DA 3102

ISSUE  
I





1 PLAN  
TYPE C PRE ADAPTATION  
1 : 50



2 PLAN  
TYPE C POST ADAPTATION  
1 : 50



**NSW GOVERNMENT Planning**

Issued under the Environmental Planning and Assessment Act 1979

Approved Section 96 (1A) (1) (2) Modification Application

No. 2 granted on the 23 July 2015

in respect to MP 550 6387

Signed: [Signature]

Sheet No. 38 of 43

LEGEND

- ADAPTABLE APARTMENTS LEGEND
- B1, 2... BEDROOM 1, 2, ETC. REFER TO GA PLANS FOR BEDROOM TYPES.
  - LY LAUNDRY. REFER TO GA PLANS FOR LAUNDRY TYPES.
  - D DINING AREA.
  - ST STUDY AREA.
  - EN ENSUITE. REFER TO GA PLANS FOR ENSUITE TYPES.
  - R ROBE.
  - S STORAGE AREA. REFER TO GA PLANS FOR DETAILS.
  - SD SLIDING DOOR. REFER TO WINDOW SCHEDULES FOR DETAILS.
  - L LIVING AREA.
  - K KITCHEN. REFER TO GA PLANS FOR KITCHEN TYPES.
  - BY BALCONY.
  - CY COURTYARD.
  - NOTES. REFER TO ACCESSIBLE UNITS SPECIFICATION FOR DETAILS AND REQUIREMENTS.
  - WIR WALK IN ROBE.
  - NOTE G. BEDROOM CLEARANCES AS AGREED WITH ACCESSIBLE CONSULTANT.
- ADDITIONAL CAPPED OFF SERVICE POINT AT SLAB LEVEL FOR ACCESSIBLE WATER CLOSET
- ADDITIONAL CAPPED OFF SERVICE POINT AT SLAB LEVEL FOR KITCHEN SINK
- ADDITIONAL CAPPED OFF SERVICE POINT AT SLAB LEVEL FOR ACCESSIBLE VANITY BASIN
- ADDITIONAL CAPPED OFF SERVICE POINT AT SLAB LEVEL FOR ACCESSIBLE SHOWER ROSE AND MIXERS
- ADDITIONAL CAPPED OFF SERVICE POINT

NOTES:

- ADAPTABLE UNITS TO COMPLY WITH THE ACCESSIBILITY REPORT AND AUSTRALIAN STANDARDS OUTLINE IN THE SCHEDULE.
- THRESHOLD FROM INTERNAL UNITS TO BALCONY TO BE LOW-LEVEL AND COMPLY WITH AS 4299.
- REFER TO ARCHITECTURAL GENERAL ARRANGEMENT PLANS FOR BATHROOM, KITCHEN, LAUNDRY TYPES.
- REFER TO WALL ELEMENT SCHEDULE DRAWINGS FOR ALL WALL TYPES.
- REFER TO WINDOW SCHEDULE DRAWINGS FOR ALL WINDOW TYPE, EXTENTS AND DETAILS.
- REFER TO DRAWING ( ) FOR ACCESSIBLE UNITS NOTES, REQUIREMENTS AND SPECIFICATION.
- ALL ADAPTABLE BATHROOMS AND KITCHENS TO HAVE ADDITIONAL SERVICES IN PLACE PRE-ADAPTATION. SERVICES TO BE CAPPED READY FOR POST-ADAPTATION.
- ALL BALCONIES TO HAVE MAXIMUM STEP DOWNS OF 30mm. REFER TO ARCHITECTURAL GENERAL ARRANGEMENT PLANS FOR BALCONY/COURTYARD EXTENTS.
- WALLS SURROUNDING SHOWER RECESS AND PAN REINFORCED TO ACCOMMODATE FUTURE NEED OF A FOLDING SHOWER SEATS AND GRAB RAILS.
- ALL ADAPTABLE UNITS TO HAVE SLIP-RESISTANT FLOOR SURFACES (KITCHEN, BATHROOMS, ENSUITE, LAUNDRY, BALCONY AND COURTYARD) TO COMPLY WITH AS 4299 AND PRESENT APPROPRIATE CERTIFICATION FOR APPROVAL.
- REFER TO ARCHITECTURAL GENERAL ARRANGEMENT PLANS FOR TILING/WATERPROOFING FOR EXTENDED KITCHEN AND WET AREAS TO BE PROVIDED PRIOR TO POST-ADAPTATION.
- REFER TO ACCESSIBLE UNITS SPECIFICATION FOR ALL NOTES ON THE DRAWINGS AND DETAIL REQUIREMENTS.
- POWER FOR WALL OVEN TO BE LOCATED FOR POST ADAPTATION LAYOUT.
- ADAPTABLE UNITS PREPARED BY HDRICE DAUBNEY, DETAIL TO FURTHER DESIGN DEVELOPMENT.

NORTH POINT

Stanisic architects is the owner of the copyright subsisting in these drawings, plans, designs and specifications. They must not be used, reproduced or copied, in whole or in part, nor may the information, ideas and concepts therein contained (which are confidential to Stanisic architects) be disclosed to any person without the prior written consent of that company.

REV	DESCRIPTION OF CHANGE	DATE
H	DA REVISION	05.09.14
I	596 ISSUE	01.05.15

PROJECT MANAGER  
**IONIC MANAGEMENT PTY. LTD**  
Level 2, 243 Liverpool Street  
SYDNEY 2000  
P: 02 8513 0243  
cryan@ionic.net.au

CLIENT  
**PAYCE CONSOLIDATED LTD**  
Level 37, CHIFLEY TOWER, 2 CHIFLEY SQUARE  
SYDNEY 2000  
P: 02 8080 2300  
F: 02 8080 2399  
reception@payce.com.au

ARCHITECTS  
**stanisic architects**  
Level 2, 243 Liverpool Street  
East Sydney NSW 2010  
T: (61 2) 9358 2588  
E: info@stanisic.com.au  
ABN 11002633481

**HDR | RICE DAUBNEY**

PROJECT  
**SOPA**  
"DOCK" 1 BURROWAY RD  
WENTWORTH POINT, THE WHARF SITE  
SYDNEY OLYMPIC PARK

DRAWING TITLE  
**TYPE C PRE + POST ADAPTATION PLANS**

SCALE: (ORIGINAL SIZE A1)  
As indicated

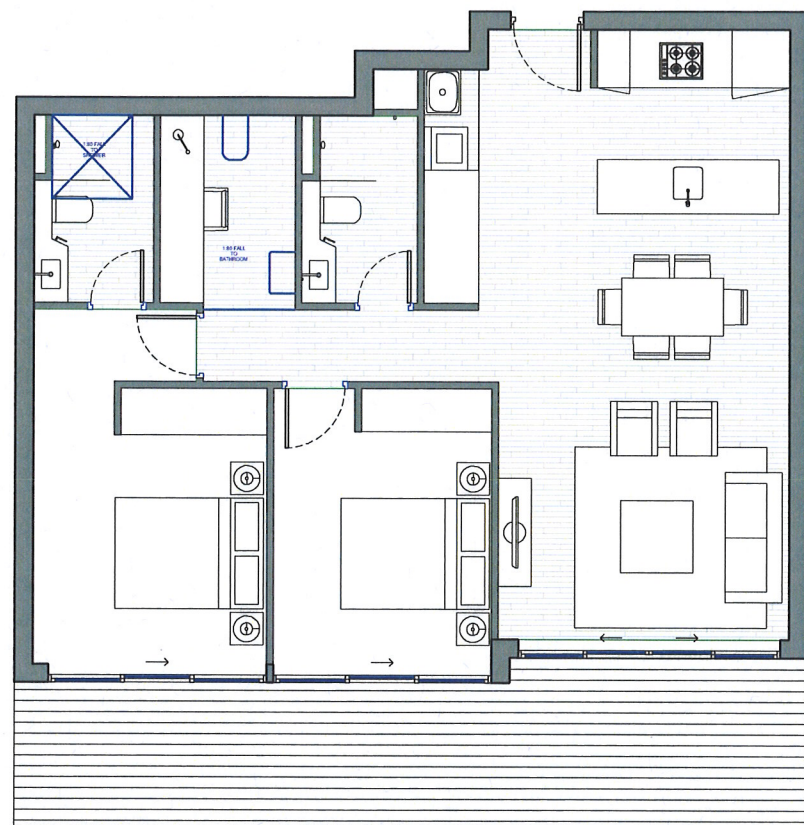
CHECKED:  
JN

PROJECT NUMBER  
14 003

DRAWING NUMBER  
DA 3103

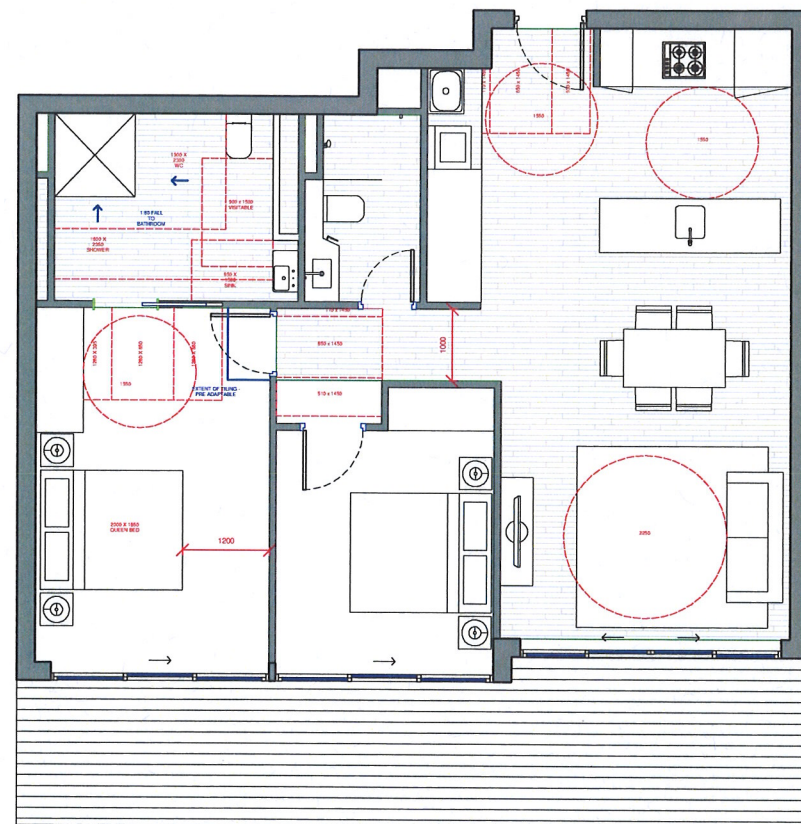
ISSUE:  
I





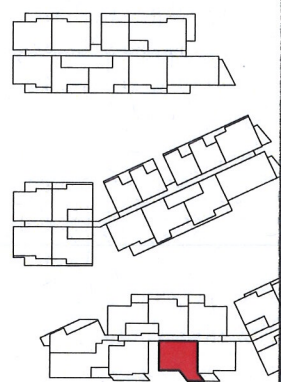
1 PLAN  
TYPE D PRE ADAPTATION

1 : 50



2 PLAN  
TYPE D POST ADAPTATION

1 : 50



**NSW GOVERNMENT Planning**

Issued under the Environmental Planning and Assessment Act 1979

Approved Section 96 (1A) (1) (2) Modification Application

No. 2 granted on the 23 July 2015

In respect to MP SSD 6387

Signed: [Signature]

Sheet No. 39 of 43

LEGEND

- ADAPTABLE APARTMENTS LEGEND
- B BATHROOM. REFER TO GA PLANS FOR BATHROOM TYPES.
- B1, 2 BEDROOM 1, 2, ETC.
- LY LAUNDRY. REFER TO GA PLANS FOR LAUNDRY TYPES.
- D DINING AREA
- ST STUDY AREA
- EN ENSUITE. REFER TO GA PLANS FOR ENSUITE TYPES.
- R ROBE
- S STORAGE AREA. REFER TO GA PLANS FOR DETAILS.
- SD SLIDING DOOR. REFER TO WINDOW SCHEDULES FOR DETAILS.
- L LIVING AREA
- K KITCHEN. REFER TO GA PLANS FOR KITCHEN TYPES.
- BV BALCONY
- CY COURTYARD
- NOTES. REFER TO ACCESSIBLE UNITS SPECIFICATION FOR DETAILS AND REQUIREMENTS
- WIR WALK IN ROBE
- NOTE G. BEDROOM CLEARANCES AS AGREED WITH ACCESSIBLE CONSULTANT
- ADDITIONAL CAPPED OFF SERVICE POINT AT SLAB LEVEL FOR ACCESSIBLE WATER CLOSET
- ADDITIONAL CAPPED OFF SERVICE POINT AT SLAB LEVEL FOR KITCHEN SINK
- ADDITIONAL CAPPED OFF SERVICE POINT AT SLAB LEVEL FOR ACCESSIBLE VANITY BASIN
- ADDITIONAL CAPPED OFF SERVICE POINT AT SLAB LEVEL FOR ACCESSIBLE SHOWER ROSE AND MIXERS
- ADDITIONAL CAPPED OFF SERVICE POINT

NOTES:

- ADAPTABLE UNITS TO COMPLY WITH THE ACCESSIBILITY REPORT AND AUSTRALIAN STANDARDS OUTLINE IN THE SCHEDULE.
- THRESHOLD FROM INTERNAL UNITS TO BALCONY TO BE LOW LEVEL AND COMPLY WITH AS 4299.
- REFER TO ARCHITECTURAL GENERAL ARRANGEMENT PLANS FOR BATHROOM, KITCHEN, LAUNDRY TYPES.
- REFER TO WALL ELEMENT SCHEDULE DRAWINGS FOR ALL WALL TYPES.
- REFER TO WINDOW SCHEDULE DRAWINGS FOR ALL WINDOW TYPE, EXTENTS AND DETAILS.
- REFER TO DRAWING ( ) FOR ACCESSIBLE UNITS NOTES, REQUIREMENTS AND SPECIFICATION.
- ALL ADAPTABLE BATHROOMS AND KITCHENS TO HAVE ADDITIONAL SERVICES IN PLACE PRE-ADAPTATION. SERVICES TO BE CAPPED READY FOR POST-ADAPTATION.
- ALL BALCONIES TO HAVE MAXIMUM STEP DOWNS OF 30mm. REFER TO ARCHITECTURAL GENERAL ARRANGEMENT PLANS FOR BALCONY/COURTYARD EXTENTS.
- WALLS SURROUNDING SHOWER RECESS AND PAN REINFORCED TO ACCOMMODATE FUTURE NEED OF A FOLDING SHOWER SEATS AND GRAB RAILS.
- ALL ADAPTABLE UNITS TO HAVE SLIP-RESISTANT FLOOR SURFACES (KITCHEN, BATHROOMS, ENSUITE, LAUNDRY, BALCONY AND COURTYARD) TO COMPLY WITH AS 4299 AND PRESENT APPROPRIATE CERTIFICATION FOR APPROVAL.
- REFER TO ARCHITECTURAL GENERAL ARRANGEMENT PLANS FOR TILING/WATERPROOFING FOR EXTENDED KITCHEN AND WET AREAS TO BE PROVIDED PRIOR TO POST-ADAPTATION.
- REFER TO ACCESSIBLE UNITS SPECIFICATION FOR ALL NOTES ON THE DRAWINGS AND DETAIL REQUIREMENTS.
- POWER FOR WALL OVEN TO BE LOCATED FOR POST ADAPTATION LAYOUT.
- ADAPTABLE UNITS PREPARED BY HDR/DICE DAUBNEY, DETAIL TO FURTHER DESIGN DEVELOPMENT.

North Point

Stanisic architects is the owner of the copyright subsisting in these drawings, plans, designs and specifications. They must not be used, reproduced or copied, in whole or in part, nor may the information, ideas and concepts therein contained (which are confidential to Stanisic architects) be disclosed to any person without the prior written consent of that company.

REV	DESCRIPTION OF CHANGE	DATE
H	S96 ISSUE	01.06.15

PROJECT MANAGER  
**IONIC MANAGEMENT PTY. LTD**



LEVEL 37, CHIFLEY TOWER, 2 CHIFLEY SQUARE  
SYDNEY 2000

P: 02 8913 0240  
cym@ionic.net.au

CLIENT  
**PAYCE CONSOLIDATED LTD**



LEVEL 37, CHIFLEY TOWER, 2 CHIFLEY SQUARE  
SYDNEY 2000

P: 02 8080 2390  
F: 02 8080 2399  
reception@payce.com.au

ARCHITECTS:  
**stanisic architects**  
Level 2 243 Liverpool Street  
East Sydney NSW 2010  
T (61 2) 9358 2588  
E info@stanisic.com.au  
ABN 11002633481

**HDR** | **RICE DAUBNEY**

PROJECT  
**SOPA**  
"DOCK" 1 BURROWAY RD  
WENTWORTH POINT, THE WHARF SITE  
SYDNEY OLYMPIC PARK

DRAWING TITLE  
**TYPE D PRE + POST ADAPTATION PLANS**

SCALE: (ORIGINAL SIZE A1)  
As indicated

CHECKED:  
JN

PROJECT NUMBER  
14 003

DRAWING NUMBER  
DA 3104

ISSUE:  
H





1 LEVEL 2  
1 : 500



3 LEVEL 4  
1 : 500



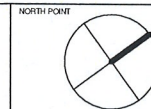
2 LEVEL 3  
1 : 500



4 LEVEL 5  
1 : 500

#### DAYLIGHT ACCESS SCHEDULE

FLOOR:	2 HRS
LEVEL 2:	23 UNITS
LEVEL 3:	23 UNITS
LEVEL 4:	23 UNITS
LEVEL 5:	25 UNITS
LEVEL 6:	18 UNITS
LEVEL 7:	19 UNITS
LEVEL 8:	19 UNITS
LEVEL 9:	28 UNITS
TOTAL:	178 UNITS
PERCENTAGE OF UNITS WITH 2 HOURS OF DAYLIGHT ACCESS:	70%
MINIMUM SEPP65 REQUIREMENT:	70%



Stanisic architects is the owner of the copyright subsisting in these drawings, plans, designs and specifications. They must not be used, reproduced or copied, in whole or in part, nor may the information, ideas and concepts therein contained (which are confidential to Stanisic architects) be disclosed to any person without the prior written consent of that company.

REV	DESCRIPTION OF CHANGE	DATE
H	DA REVISION	05.08.14
I	586 ISSUE	01.05.15

#### LEGEND

- 2 HOURS DAYLIGHT ACCESS TO LIVING ROOMS
- < 2 HOURS DAYLIGHT ACCESS TO LIVING ROOMS
- 3 HOURS DAYLIGHT ACCESS TO PRIVATE OPEN SPACES



NSW GOVERNMENT  
Planning

Issued under the Environmental Planning and Assessment Act 1979

Approved Section 96 (1A) (1) (2) Modification Application

No. 2 granted on the 23 July 2015

in respect to MP55D.6387

Signed [Signature]

Sheet No. 40 of 43

#### PROJECT MANAGER

IONIC MANAGEMENT  
PTY. LTD  
LEVEL 37, CHIFLEY TOWER, 2 CHIFLEY SQUARE  
SYDNEY 2000  
P: 02 8013 0040  
cryan@ionic.net.au

#### CLIENT

PAYCE  
CONSOLIDATED LTD  
LEVEL 37, CHIFLEY TOWER, 2 CHIFLEY SQUARE  
SYDNEY 2000  
P: 02 8010 2300  
F: 02 8010 2399  
mccapton@payce.com.au

#### ARCHITECTS

stanisic architects  
Level 2, 243 Liverpool Street  
East Sydney NSW 2010  
T (61 2) 3358 2366  
E info@stanisic.com.au  
ABN 11002633481

HR | RICE  
DAUBNEY

#### PROJECT

SOPA  
"DOCK" 1 BURROWAY RD  
WENTWORTH POINT, THE WHARF SITE  
SYDNEY OLYMPIC PARK

#### DRAWING TITLE

SEPP65 DAYLIGHT ACCESS  
DIAGRAM

#### SCALE: (ORIGINAL SIZE A1)

As Indicated

PROJECT NUMBER: 14 003

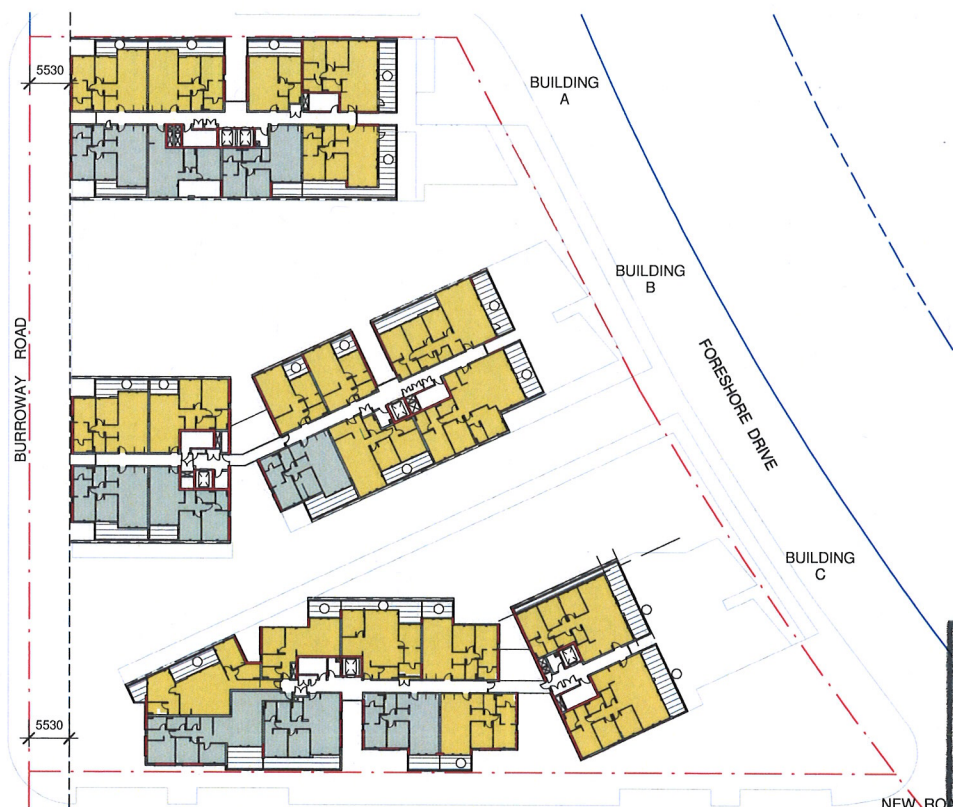
DRAWING NUMBER: DA 9001

ISSUE: I





1 LEVEL 6  
1 : 500



2 LEVEL 7  
1 : 500



3 LEVEL 8  
1 : 500



4 LEVEL 9  
1 : 500

NORTH POINT

Starisic architects is the owner of the copyright subsisting in these drawings, plans, designs and specifications. They must not be used, reproduced or copied, in whole or in part, nor may the information, ideas and concepts therein contained (which are confidential to Starisic architects) be disclosed to any person without the prior written consent of that company.

REV	DESCRIPTION OF CHANGE	DATE
H	DA REVISION	05.08.14
I	S96 ISSUE	01.05.15

LEGEND

[Yellow box]	2 HOURS DAYLIGHT ACCESS TO LIVING ROOMS
[Grey box]	< 2 HOURS DAYLIGHT ACCESS TO LIVING ROOMS
[Circle]	2 HOURS DAYLIGHT ACCESS TO PRIVATE OPEN SPACES

**NSW GOVERNMENT Planning**

Issued under the Environmental Planning and Assessment Act 1979

Approved Section 96 (1A) (1) (2) Modification Application

No. 2 granted on the 23 July 2015

in respect to MP SSD 6387

Signed [Signature]

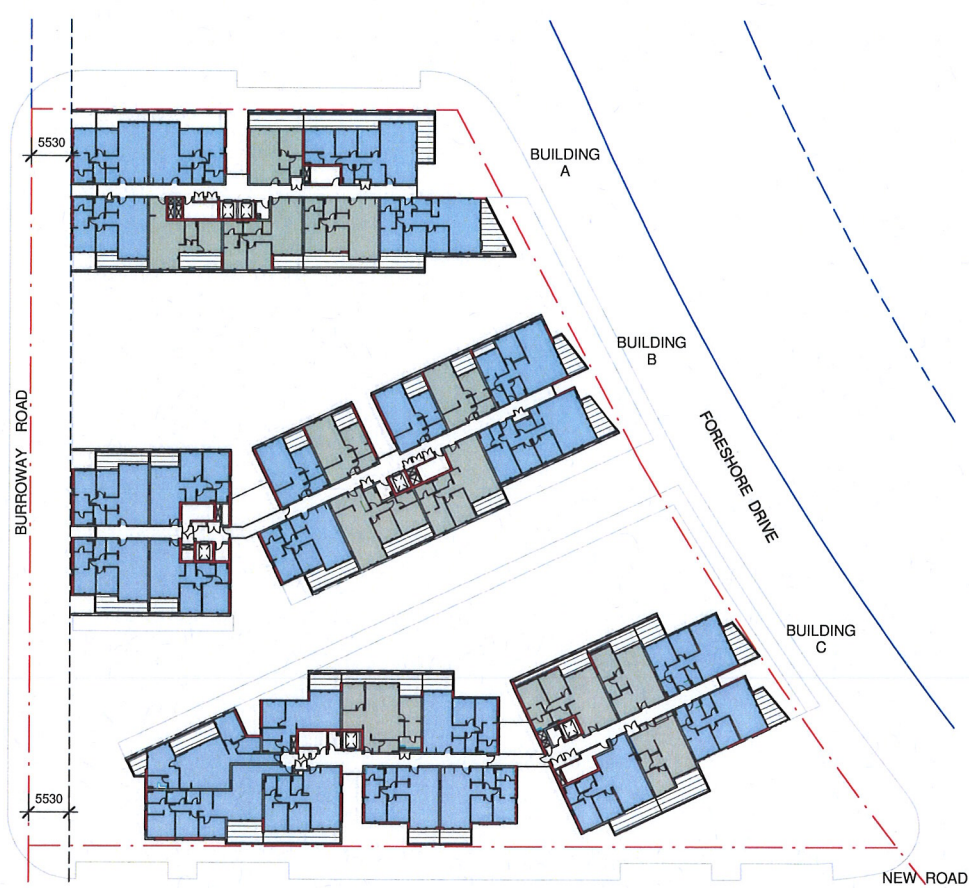
Sheet No. 41 of 43

PROJECT MANAGER	IONIC MANAGEMENT PTY. LTD	<b>ionic</b> ionic management pty ltd
LEVEL 37, CHIFLEY TOWER, 2 CHIFLEY SQUARE SYDNEY 2000	P: 02 9313 0010 cryan@ionic.net.au	
CLIENT	PAYCE CONSOLIDATED LTD	<b>PAYCE</b>
LEVEL 37, CHIFLEY TOWER, 2 CHIFLEY SQUARE SYDNEY 2000	P: 02 8080 2300 F: 02 8080 2399 reception@payce.com.au	
ARCHITECTS	stanisic architects	
Level 2 243 Liverpool Street East Sydney NSW 2010 T (61 2) 9356 2508 E info@stanisic.com.au ABN 11002633481		
	<b>HR</b> RICE DAUBNEY	
PROJECT	SOPA "DOCK" 1 BURROWAY RD WENTWORTH POINT, THE WHARF SITE SYDNEY OLYMPIC PARK	
DRAWING TITLE	SEPP65 DAYLIGHT ACCESS DIAGRAM	
SCALE: (ORIGINAL SIZE A1)	As indicated	CHECKED: JN
PROJECT NUMBER	DRAWING NUMBER	ISSUE
14 003	DA 9002	I

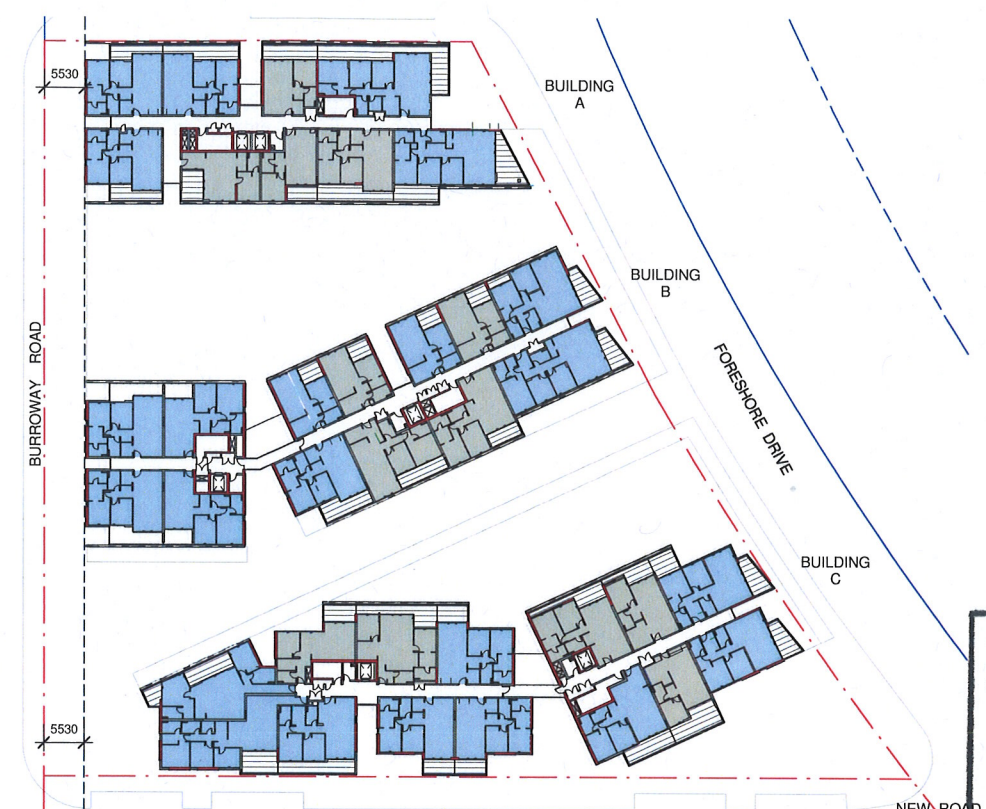




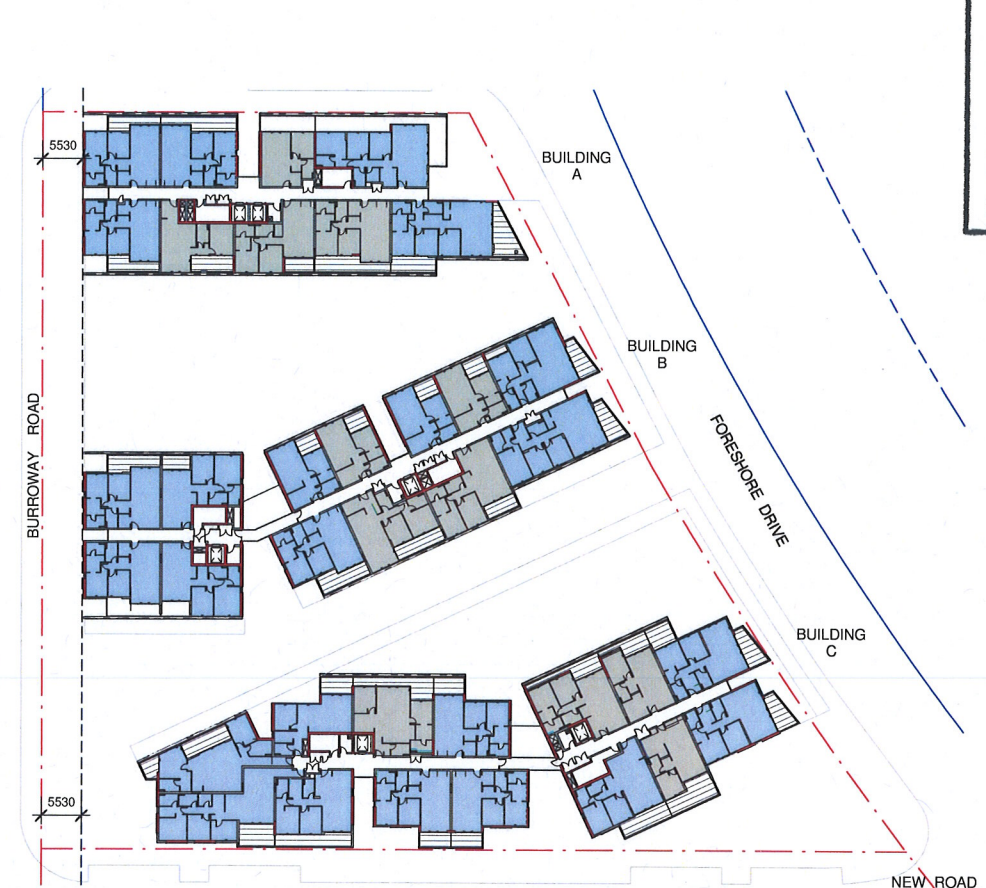
1 LEVEL 2  
1 : 500



3 LEVEL 4  
1 : 500



2 LEVEL 3  
1 : 500



4 LEVEL 5  
1 : 500

NATURAL VENTILATION SCHEDULE

LEVEL 2:	22 UNITS
LEVEL 3:	23 UNITS
LEVEL 4:	23 UNITS
LEVEL 5:	23 UNITS
LEVEL 6:	21 UNITS
LEVEL 7:	21 UNITS
LEVEL 8:	21 UNITS
LEVEL 9:	23 UNITS
TOTAL:	178 UNITS
PERCENTAGE OF UNITS NATURALLY VENTILATED:	69%
MINIMUM SEPP65 REQUIREMENT:	60%

NORTH POINT

Stanisic architects is the owner of the copyright subsisting in these drawings, plans, designs and specifications. They must not be used, reproduced or copied, in whole or in part, nor may the information, ideas and concepts therein contained (which are confidential to Stanisic architects) be disclosed to any person without the prior written consent of that company.

REV	DESCRIPTION OF CHANGE	DATE
H	DA REVISION	05.08.14
I	596 ISSUE	01.05.15

LEGEND

■ NATURALLY VENTILATED

■ NOT NATURALLY VENTILATED

**NSW GOVERNMENT Planning**

Issued under the Environmental Planning and Assessment Act 1979

Approved Section 96 (1A) (1) (2) Modification Application

No. .... 2 ..... granted on the 23 July 2015

in respect to MP 550.6387

Signed..... *[Signature]* .....

Sheet No. 42 of 43

PROJECT MANAGER

**IONIC MANAGEMENT PTY. LTD**

Level 37, CHIFLEY TOWER, 2 CHIFLEY SQUARE  
SYDNEY 2000

P: 02 8513 0240  
cny@ionic.net.au

CLIENT

**PAYCE CONSOLIDATED LTD**

Level 37, CHIFLEY TOWER, 2 CHIFLEY SQUARE  
SYDNEY 2000

P: 02 8000 2399  
F: 02 8000 2399  
mcc@payce.com.au

ARCHITECTS

**stanisic architects**

Level 2 243 Liverpool Street  
East Sydney NSW 2010  
T (61 2) 9358 2588  
E info@stanisic.com.au  
ABN 11002633481

**HR RICE DAUBNEY**

PROJECT

**SOPA**

"DOCK" 1 BURROWAY RD  
WENTWORTH POINT, THE WHARF SITE  
SYDNEY OLYMPIC PARK

DRAWING TITLE

**SEPP65 NATURAL VENTILATION DIAGRAM**

SCALE: (ORIGINAL SIZE A1)	CHECKED:
As Indicated	JN
PROJECT NUMBER	DRAWING NUMBER
14 003	DA 9003
	ISSUE:
	I





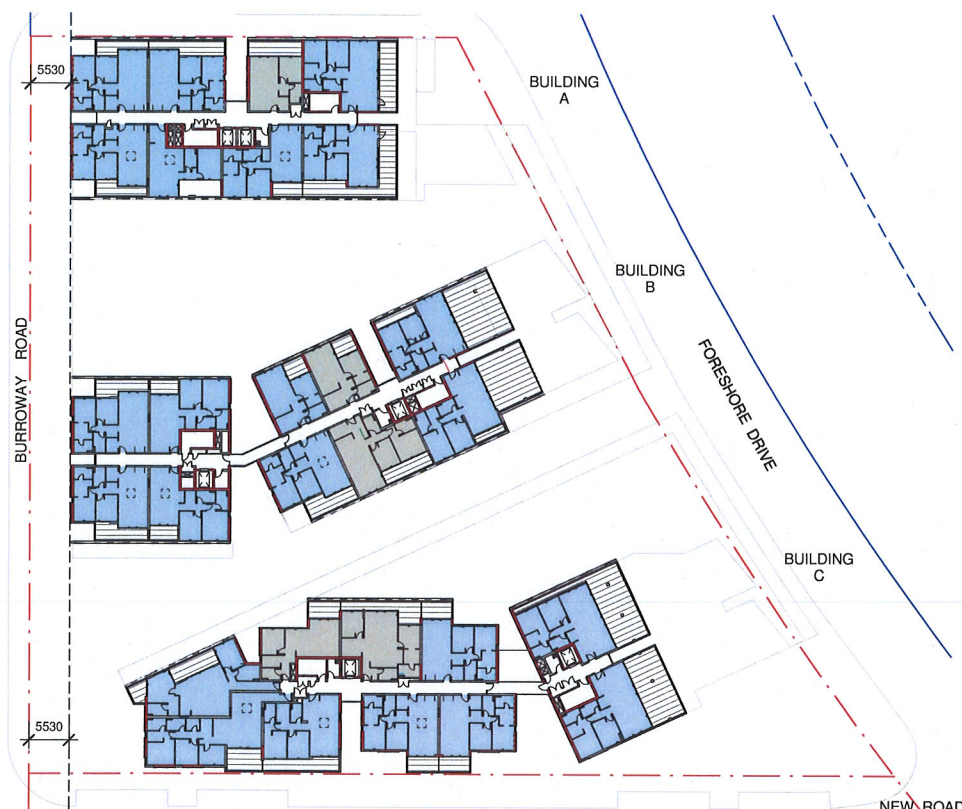
1 LEVEL 6  
1 : 500



2 LEVEL 7  
1 : 500



3 LEVEL 8  
1 : 500



4 LEVEL 9  
1 : 500

NORTH POINT

Stanisic architects is the owner of the copyright subsisting in these drawings, plans, designs and specifications. They must not be used, reproduced or copied, in whole or in part, nor may the information, ideas and concepts therein contained (which are confidential to Stanisic architects) be disclosed to any person without the prior written consent of that company.

REV	DESCRIPTION OF CHANGE	DATE
H	DA REVISION	05.09.14
I	S96 ISSUE	01.05.15

LEGEND

■ NATURALLY VENTILATED

■ NOT NATURALLY VENTILATED

**NSW GOVERNMENT Planning**

Issued under the Environmental Planning and Assessment Act 1979

Approved Section 96 (1A) (1) (2) Modification Application

No. .... 2 ..... granted on the 23 July 2015

in respect to MP 55D6387

Signed.....

Sheet No. .... 43 of 43

PROJECT MANAGER	IONIC MANAGEMENT PTY. LTD	<b>ionic</b> ionic management pty ltd P: 02 8313 0240 org@ionic.net.au
CLIENT	PAYCE CONSOLIDATED LTD	<b>PAYCE</b> P: 02 8080 2300 F: 02 8080 2399 reception@payce.com.au
ARCHITECTS	<b>stanisic architects</b> Level 2 243 Liverpool Street East Sydney NSW 2010 T (61 2) 9358 2588 E info@stanisic.com.au ABN 11002633481	
PROJECT	<b>SOPA</b> "DOCK" 1 BURROWAY RD WENTWORTH POINT, THE WHARF SITE SYDNEY OLYMPIC PARK	
DRAWING TITLE	SEPP65 NATURAL VENTILATION DIAGRAM	
SCALE: (ORIGINAL SIZE A1)	As indicated	CHECKED:
PROJECT NUMBER	DRAWING NUMBER	ISSUE:
14 003	DA 9004	I