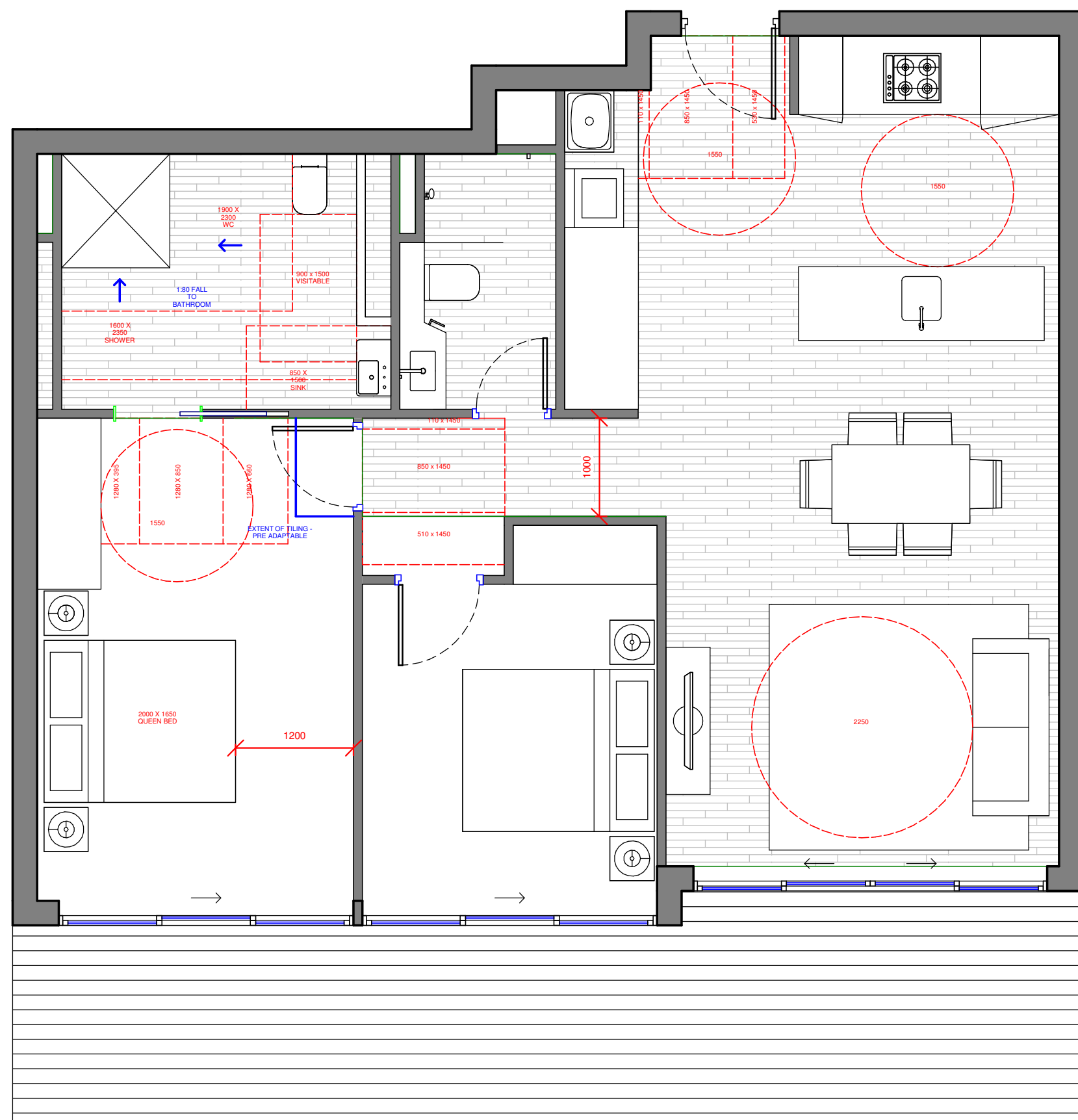


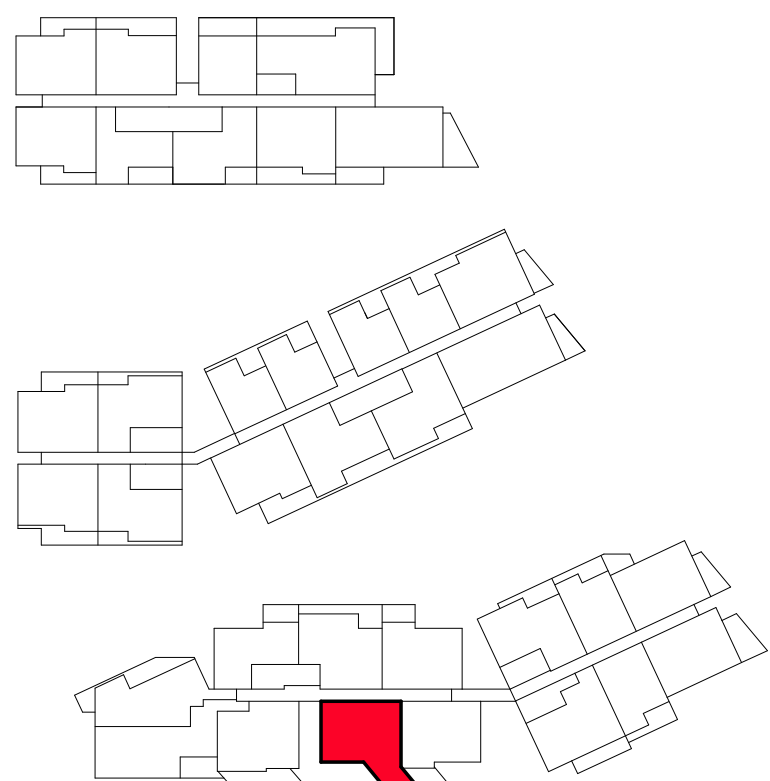
1 PLAN  
TYPE D PRE ADAPTATION

1 : 50



2 PLAN  
TYPE D POST ADAPTATION

1 : 50



#### LEGEND

##### ADAPTABLE APARTMENTS LEGEND

B BATHROOM. REFER TO GA PLANS FOR BATHROOM TYPES.  
B1, 2... BEDROOM 1, 2, ETC.  
LY LAUNDRY. REFER TO GA PLANS FOR LAUNDRY TYPES.  
D DINING AREA  
ST STUDY AREA  
EN ENSUITE. REFER TO GA PLANS FOR ENSUITE TYPES.  
R ROBE  
S STORAGE AREA. REFER TO GA PLANS FOR DETAILS.  
SD SLIDING DOOR. REFER TO WINDOW SCHEDULES FOR DETAILS.  
L LIVING AREA  
K KITCHEN. REFER TO GA PLANS FOR KITCHEN TYPES.  
BY BALCONY  
CY COURTYARD  
NOTE A. B. NOTES. REFER TO ACCESSIBLE UNITS SPECIFICATION FOR DETAILS AND REQUIREMENTS  
WIR WALK IN ROBE  
NOTE G. BEDROOM CLEARANCES AS AGREED WITH ACCESSIBLE CONSULTANT

ADDITIONAL CAPPED OFF SERVICE POINT AT SLAB LEVEL FOR ACCESSIBLE WATER CLOSET

ADDITIONAL CAPPED OFF SERVICE POINT AT SLAB LEVEL FOR KITCHEN SINK

ADDITIONAL CAPPED OFF SERVICE POINT AT SLAB LEVEL FOR ACCESSIBLE VANITY BASIN

ADDITIONAL CAPPED OFF SERVICE POINT AT SLAB LEVEL FOR ACCESSIBLE SHOWER ROSE AND MIXERS

ADDITIONAL CAPPED OFF SERVICE POINT

##### NOTES:

- ADAPTABLE UNITS TO COMPLY WITH THE ACCESSIBILITY REPORT AND AUSTRALIAN STANDARDS OUTLINE IN THE SCHEDULE.
- THRESHOLD FROM INTERNAL UNITS TO BALCONY TO BE LOW LEVEL AND COMPLY WITH AS 4299
- REFER TO ARCHITECTURAL GENERAL ARRANGEMENT PLANS FOR BATHROOM, KITCHEN, LAUNDRY TYPES.
- REFER TO WALL ELEMENT SCHEDULE DRAWINGS FOR ALL WALL TYPES.
- REFER TO WINDOW SCHEDULE DRAWINGS FOR ALL WINDOW TYPE, EXTENTS AND DETAILS.
- REFER TO DRAWING ( ) FOR ACCESSIBLE UNITS NOTES, REQUIREMENTS AND SPECIFICATION.
- ALL ADAPTABLE BATHROOMS AND KITCHENS TO HAVE ADDITIONAL SERVICES IN PLACE PRE-ADAPTATION. SERVICES TO BE CAPPED READY FOR POST-ADAPTATION.
- ALL BALCONIES TO HAVE MAXIMUM STEP DOWNS OF 35mm. REFER TO ARCHITECTURAL GENERAL ARRANGEMENT PLANS FOR BALCONY/ COURTYARD EXTENTS.
- WALLS SURROUNDING SHOWER RECESS AND PAN REINFORCED TO ACCOMMODATE FUTURE NEED OF A FOLDING SHOWER SEATS AND GRAB RAILS.
- ALL ADAPTABLE UNITS TO HAVE SLIP-RESISTANT FLOOR SURFACES (KITCHEN, BATHROOMS, ENSUITE, LAUNDRY, BALCONY AND COURTYARD) TO COMPLY WITH AS 4299 AND PRESENT APPROPRIATE CERTIFICATION FOR APPROVAL.
- TILING/ WATERPROOFING FOR EXTENDED KITCHEN AND WET AREAS TO BE PROVIDED PRIOR TO POST-ADAPTATION.
- REFER TO ACCESSIBLE UNITS SPECIFICATION FOR ALL NOTES ON THE DRAWINGS AND DETAIL REQUIREMENTS.
- POWER FOR WALL OVEN TO BE LOCATED FOR POST ADAPTATION LAYOUT. ADAPTABLE UNITS PREPARED BY HDR/RICE DAUBNEY, DETAIL TO FURTHER DESIGN DEVELOPMENT.

NORTH POINT

Stanisic architects is the owner of the copyright subsisting in these drawings, plans, designs and specifications. They must not be used, reproduced or copied, in whole or in part, nor may the information, ideas and concepts therein contained (which are confidential to Stanisic architects) be disclosed to any person without the prior written consent of that company.

REV	DESCRIPTION OF CHANGE	DATE
H	S96 ISSUE	01.05.15

PROJECT MANAGER

IONIC MANAGEMENT  
PTY. LTD



LEVEL 37, CHIFLEY TOWER, 2 CHIFLEY SQUARE  
SYDNEY 2000

P: 02 8313 0240  
cryan@ionic.net.au

CLIENT

PAYCE  
CONSOLIDATED LTD



LEVEL 37, CHIFLEY TOWER, 2 CHIFLEY SQUARE  
SYDNEY 2000

P: 02 8080 2300  
F: 02 8080 2399  
reception@payce.com.au

ARCHITECTS:

stanisic architects

Level 2 243 Liverpool Street  
East Sydney NSW 2010  
T (61 2) 9358 2588  
E info@stanisic.com.au  
ABN 11 002633481



PROJECT

SOPA  
"DOCK" 1 BURROWAY RD  
WENTWORTH POINT, THE WHARF SITE  
SYDNEY OLYMPIC PARK

DRAWING TITLE

TYPE D PRE + POST ADAPTATION  
PLANS

SCALE: (ORIGINAL SIZE A1)

As indicated

CHECKED:

JN

PROJECT NUMBER

14 003

DRAWING NUMBER

DA 3104

ISSUE:

H