

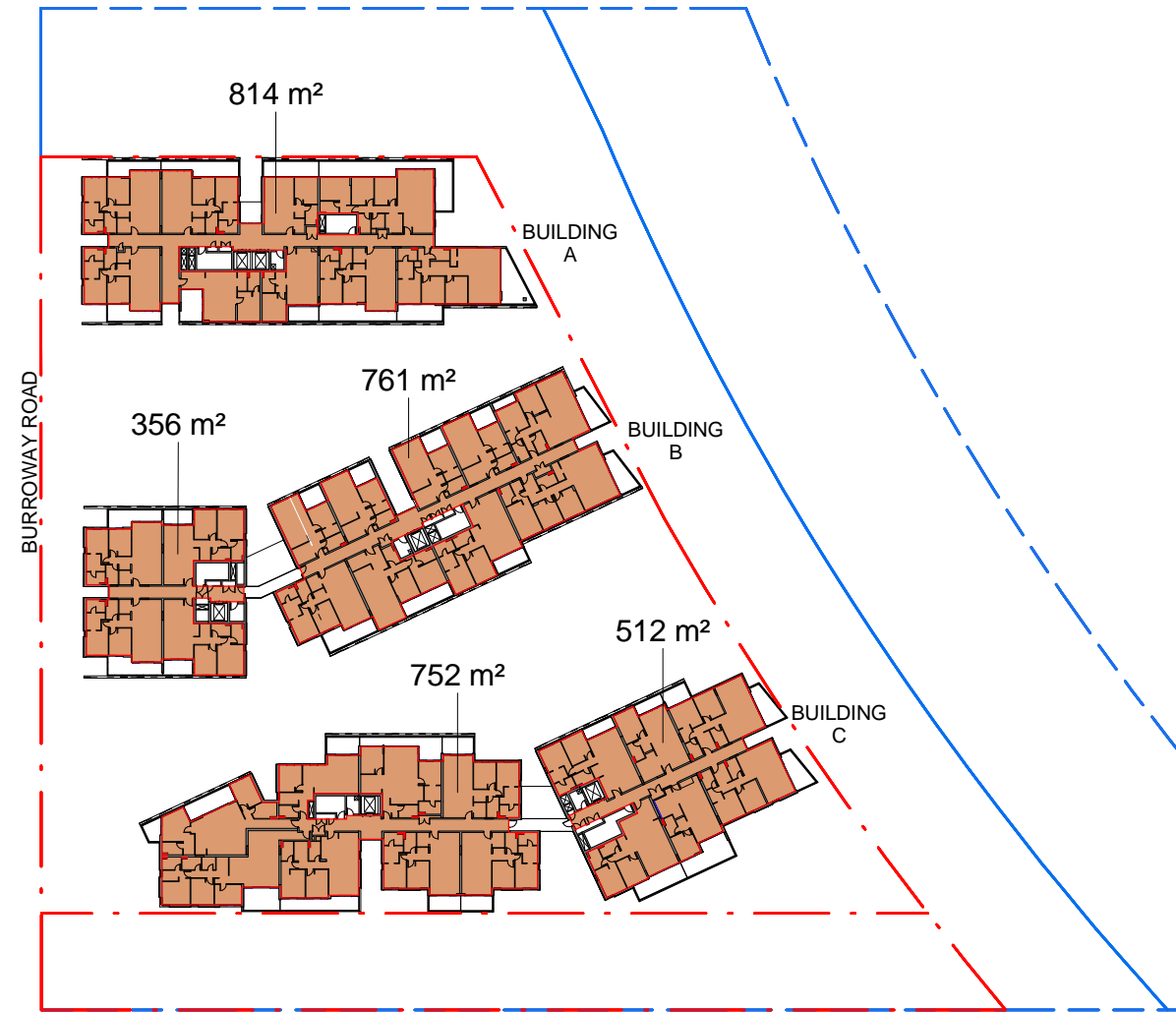
1 BASEMENT 1  
1 : 1000



2 LEVEL 1  
1 : 1000



3 LEVEL 2  
1 : 1000



4 LEVEL 3  
1 : 1000



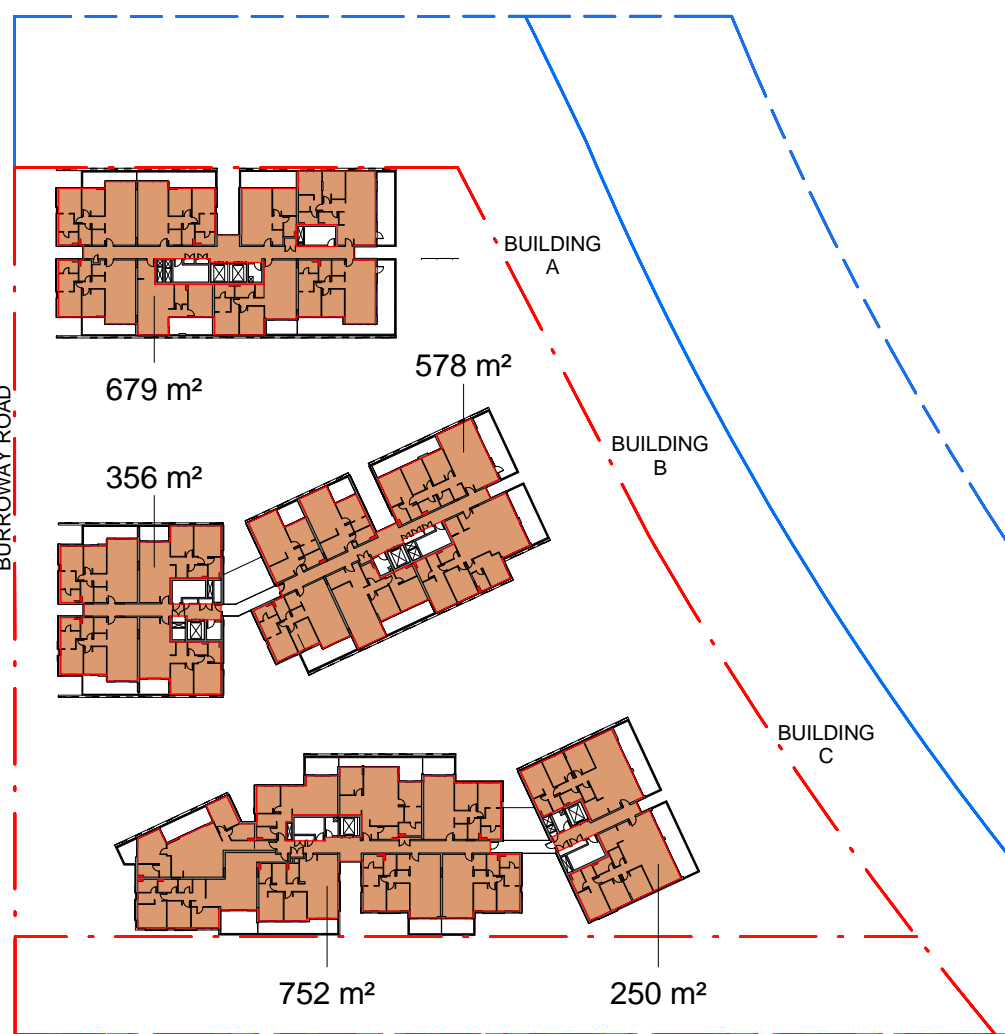
5 LEVEL 4  
1 : 1000



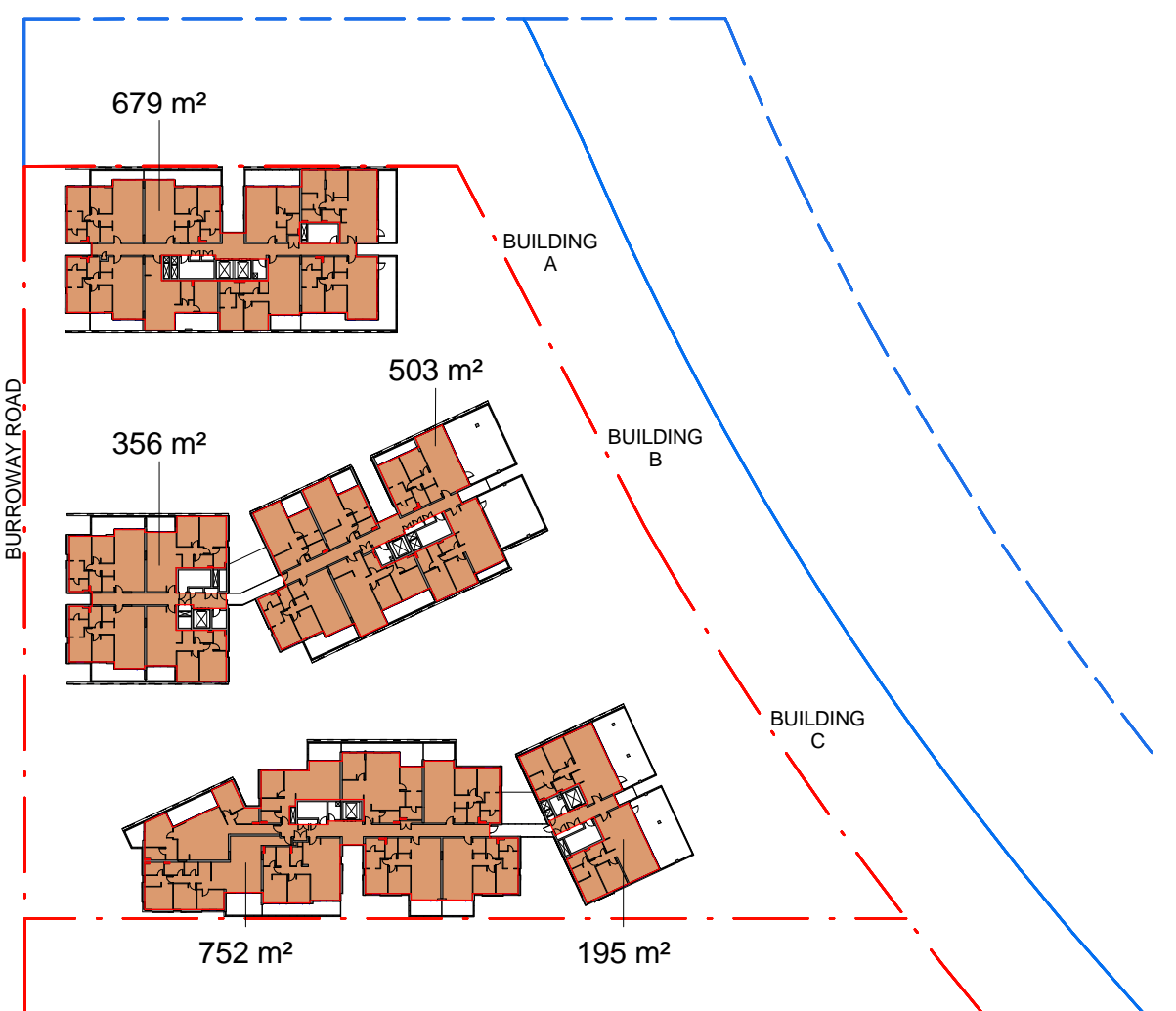
6 LEVEL 5  
1 : 1000



7 LEVEL 6  
1 : 1000



8 LEVEL 7  
1 : 1000



9 LEVEL 8  
1 : 1000



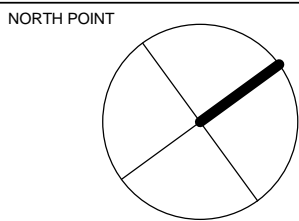
10 LEVEL 9  
1 : 1000

Area Schedule (Gross Floor Area)		
Level	Building	Area
LEVEL 1		153 m <sup>2</sup>
LEVEL 1		2245 m <sup>2</sup>
LEVEL 1		105 m <sup>2</sup>
LEVEL 1		1017 m <sup>2</sup>
LEVEL 1		220 m <sup>2</sup>
LEVEL 1		197 m <sup>2</sup>
LEVEL 1		190 m <sup>2</sup>
LEVEL 1	A	79 m <sup>2</sup>
LEVEL 1	B	31 m <sup>2</sup>
LEVEL 1	B	26 m <sup>2</sup>
LEVEL 1	C	29 m <sup>2</sup>
LEVEL 1	C	14 m <sup>2</sup>
TOTAL:		4305 m <sup>2</sup>
LEVEL 2	A	787 m <sup>2</sup>
LEVEL 2	B	761 m <sup>2</sup>
LEVEL 2	B	356 m <sup>2</sup>
LEVEL 2	C	752 m <sup>2</sup>
LEVEL 2	C	512 m <sup>2</sup>
TOTAL:		3169 m <sup>2</sup>
LEVEL 3	A	814 m <sup>2</sup>
LEVEL 3	B	356 m <sup>2</sup>
LEVEL 3	B	761 m <sup>2</sup>
LEVEL 3	C	752 m <sup>2</sup>
LEVEL 3	C	512 m <sup>2</sup>
TOTAL:		3195 m <sup>2</sup>

Area Schedule (Gross Floor Area)		
Level	Building	Area
LEVEL 4	A	821 m <sup>2</sup>
LEVEL 4	B	761 m <sup>2</sup>
LEVEL 4	B	356 m <sup>2</sup>
LEVEL 4	C	752 m <sup>2</sup>
LEVEL 4	C	512 m <sup>2</sup>
TOTAL:		3202 m <sup>2</sup>
LEVEL 5	A	821 m <sup>2</sup>
LEVEL 5	B	761 m <sup>2</sup>
LEVEL 5	B	356 m <sup>2</sup>
LEVEL 5	C	752 m <sup>2</sup>
LEVEL 5	C	512 m <sup>2</sup>
TOTAL:		3202 m <sup>2</sup>
LEVEL 6	A	679 m <sup>2</sup>
LEVEL 6	B	356 m <sup>2</sup>
LEVEL 6	B	578 m <sup>2</sup>
LEVEL 6	C	250 m <sup>2</sup>
LEVEL 6	C	752 m <sup>2</sup>
TOTAL:		2614 m <sup>2</sup>
LEVEL 7	A	679 m <sup>2</sup>
LEVEL 7	B	578 m <sup>2</sup>
LEVEL 7	B	356 m <sup>2</sup>
LEVEL 7	C	250 m <sup>2</sup>
LEVEL 7	C	752 m <sup>2</sup>
TOTAL:		2614 m <sup>2</sup>

Area Schedule (Gross Floor Area)		
Level	Building	Area
LEVEL 8	A	679 m <sup>2</sup>
LEVEL 8	B	356 m <sup>2</sup>
LEVEL 8	B	503 m <sup>2</sup>
LEVEL 8	C	195 m <sup>2</sup>
LEVEL 8	C	752 m <sup>2</sup>
TOTAL:		2485 m <sup>2</sup>
LEVEL 9	A	679 m <sup>2</sup>
LEVEL 9	B	356 m <sup>2</sup>
LEVEL 9	B	503 m <sup>2</sup>
LEVEL 9	C	195 m <sup>2</sup>
LEVEL 9	C	752 m <sup>2</sup>
TOTAL:		2485 m <sup>2</sup>
TOTAL GFA:		27272 m <sup>2</sup>

TOTAL RETAIL / COMMERCIAL / CHILD CARE GFA	4126 m <sup>2</sup>
TOTAL RESIDENTIAL GFA	23146 m <sup>2</sup>
TOTAL SITE GFA	27272 m <sup>2</sup>
SITE AREA	10430 m <sup>2</sup>
FSR	2.615:1



Stanisic architects is the owner of the copyright subsisting in these drawings, plans, designs and specifications. They must not be used, reproduced or copied, in whole or in part, nor may the information, ideas and concepts therein contained (which are confidential to Stanisic architects) be disclosed to any person without the prior written consent of that company.

REV	DESCRIPTION OF CHANGE	DATE
H	DA REVISION	05.09.14
I	5% ISSUE	01.05.15

#### GFA LEGEND

- NON-RESIDENTIAL
- RESIDENTIAL

#### DEFINITION

**gross floor area** means the sum of the floor area of each floor of a building measured from the internal face of external walls, or from the internal face of walls separating the building from any other building, measured at a height of 1.4 metres above the floor, and includes:

- (a) the area of a mezzanine, and
- (b) habitable rooms in a basement or an attic, and
- (c) any shop, auditorium, cinema, and the like, in a basement or attic, but excludes:
- (d) any area for common vertical circulation, such as lifts and stairs, and
- (e) any basement:
- (i) storage, and
- (ii) vehicular access, loading areas, garbage and services, and
- (f) plant rooms, lift towers and other areas used exclusively for mechanical services or ducting, and
- (g) car parking to meet any requirements of the consent authority (including access to that car parking), and
- (h) any space used for the loading or unloading of goods (including access to it), and
- (i) terraces and balconies with outer walls less than 1.4 metres high, and
- (j) voids above a floor at the level of a storey or storey above.

PROJECT MANAGER  
**IONIC MANAGEMENT PTY. LTD**  
Level 37, CHIFLEY TOWER, 2 CHIFLEY SQUARE  
SYDNEY 2000  
P: 02 8313 0340  
cyan@ionic.net.au

CLIENT  
**PAYCE CONSOLIDATED LTD**  
Level 37, CHIFLEY TOWER, 2 CHIFLEY SQUARE  
SYDNEY 2000  
P: 02 8080 2300  
F: 02 8080 2388  
reception@payce.com.au

ARCHITECTS:  
**stanisic architects**  
Level 2, 243 Liverpool Street  
East Sydney NSW 2010  
T: (61 2) 9358 6588  
E: info@stanisic.com.au  
ABN 11002633481

**HDR** | **RICE DAUBNEY**

PROJECT  
**SOPA**  
**"DOCK" 1 BURROWAY RD**  
WENTWORTH POINT, THE WHARF SITE  
SYDNEY OLIMPIC PARK

DRAWING TITLE

**GFA DIAGRAMS & YIELD SCHEDULE**

SCALE: [ORIGINAL SIZE A1]  
**1 : 1000**

CHECKED:  
**JN**

PROJECT NUMBER  
**14 003**

DRAWING NUMBER  
**DA 0006**

ISSUE:  
**I**