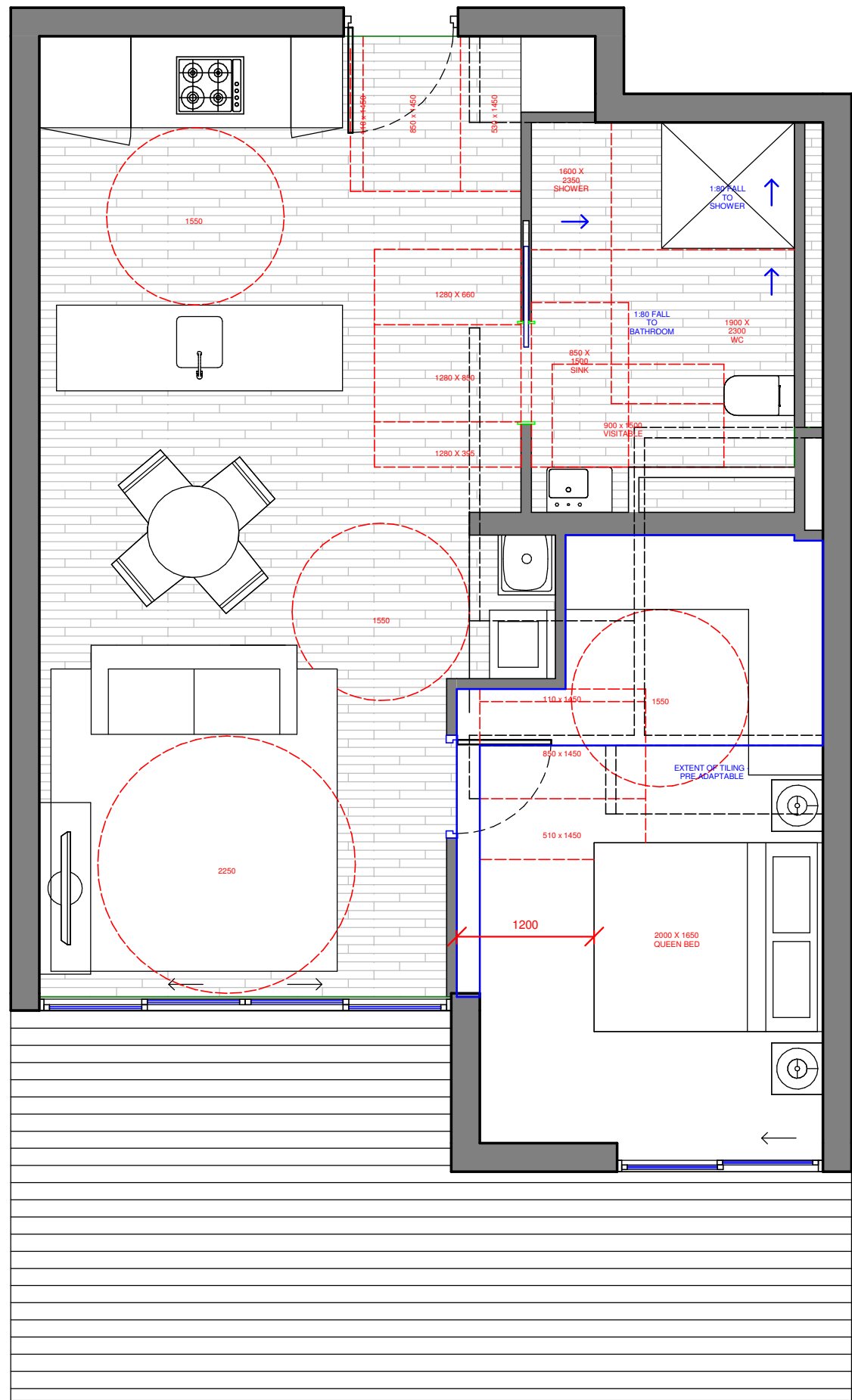
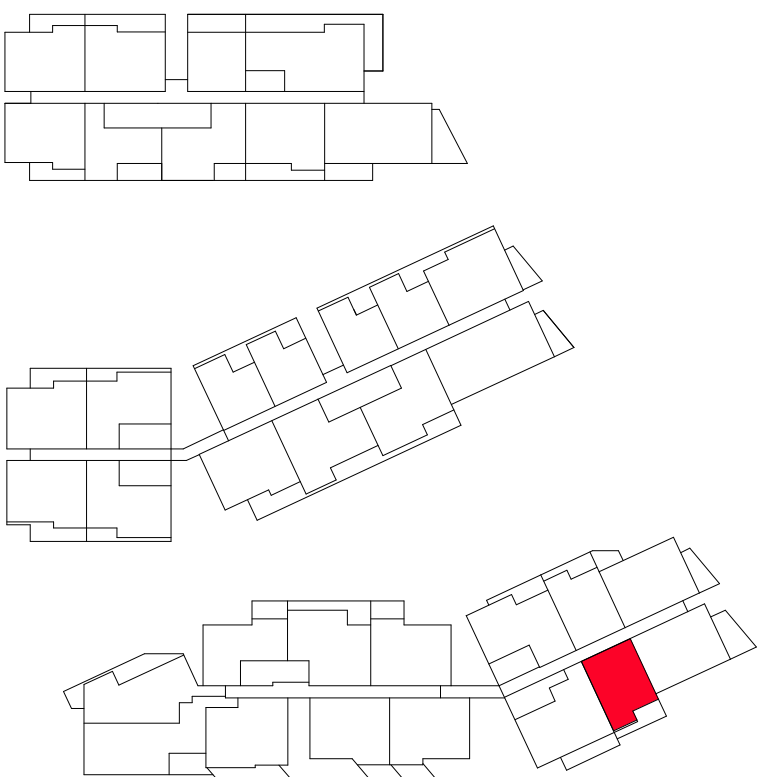


1 PLAN
TYPE B PRE ADAPTATION
1 : 50



2 PLAN
TYPE B POST ADAPTATION
1 : 50

LEGEND

ADAPTABLE APARTMENTS LEGEND
B BATHROOM. REFER TO GA PLANS FOR BATHROOM TYPES.
B1, 2... BEDROOM 1, 2, ETC.
LY LAUNDRY. REFER TO GA PLANS FOR LAUNDRY TYPES.
D DINING AREA
ST STUDY AREA
EN ENSUITE. REFER TO GA PLANS FOR ENSUITE TYPES.
R ROBE
S STORAGE AREA. REFER TO GA PLANS FOR DETAILS.
SD SLIDING DOOR. REFER TO WINDOW SCHEDULES FOR DETAILS.
L LIVING AREA
K KITCHEN. REFER TO GA PLANS FOR KITCHEN TYPES.
BY BALCONY
CY COURTYARD
NOTE A. B. NOTES: REFER TO ACCESSIBLE UNITS SPECIFICATION FOR DETAILS AND REQUIREMENTS
WIR WALK IN ROBE
NOTE G NOTE G. BEDROOM CLEARANCES AS AGREED WITH ACCESSIBLE CONSULTANT

ADDITIONAL CAPPED OFF SERVICE POINT AT SLAB LEVEL FOR ACCESSIBLE WATER CLOSET

ADDITIONAL CAPPED OFF SERVICE POINT AT SLAB LEVEL FOR KITCHEN SINK

ADDITIONAL CAPPED OFF SERVICE POINT AT SLAB LEVEL FOR ACCESSIBLE VANITY BASIN

ADDITIONAL CAPPED OFF SERVICE POINT AT SLAB LEVEL FOR ACCESSIBLE SHOWER ROSE AND MIXERS

ADDITIONAL CAPPED OFF SERVICE POINT

NOTES:

- ADAPTABLE UNITS TO COMPLY WITH THE ACCESSIBILITY REPORT AND AUSTRALIAN STANDARDS OUTLINE IN THE SCHEDULE.
- THRESHOLD FROM INTERNAL UNITS TO BALCONY TO BE LOW LEVEL AND COMPLY WITH AS 4299.
- REFER TO ARCHITECTURAL GENERAL ARRANGEMENT PLANS FOR BATHROOM, KITCHEN, LAUNDRY TYPES.
- REFER TO WALL ELEMENT SCHEDULE DRAWINGS FOR ALL WALL TYPES.
- REFER TO WINDOW SCHEDULE DRAWINGS FOR ALL WINDOW TYPE, EXTENTS AND DETAILS.
- ALL ADAPTABLE BATHROOMS AND KITCHENS TO HAVE REQUIREMENTS AND SPECIFICATION.
- REFER TO DRAWING () FOR ACCESSIBLE UNITS NOTES, REQUIREMENTS AND SPECIFICATION.
- ALL ADAPTABLE BATHROOMS AND KITCHENS TO HAVE ADDITIONAL SERVICES IN PLACE PRE-ADAPTATION. SERVICES TO BE CAPPED READY FOR POST-ADAPTATION. ALL BALCONIES TO HAVE MAXIMUM STEP DOWNS OF 30mm. REFER TO ARCHITECTURAL GENERAL ARRANGEMENT PLANS FOR BALCONY/ COURTYARD EXTENTS.
- WALLS SURROUNDING SHOWER RECESS AND PAN REINFORCED TO ACCOMMODATE FUTURE NEED OF A FOLDING SHOWER SEATS AND GRAB RAILS.
- ALL ADAPTABLE UNITS TO HAVE SLIP-RESISTANT FLOOR SURFACES (KITCHEN, BATHROOMS, ENSUITE, LAUNDRY, BALCONY AND COURTYARD) TO COMPLY WITH AS 4299 AND PRESENT APPROPRIATE CERTIFICATION FOR APPROVAL.
- TILING: WATERPROOFING FOR EXTENDED KITCHEN AND WET AREAS TO BE PROVIDED PRIOR TO POST-ADAPTATION.
- REFER TO ACCESSIBLE UNITS SPECIFICATION FOR ALL NOTES ON THE DRAWINGS AND DETAIL REQUIREMENTS.
- POWER FOR WALL OVEN TO BE LOCATED FOR POST ADAPTATION LAYOUT.
- ADAPTABLE UNITS PREPARED BY HDR/RICE DAUBNEY, DETAIL TO FURTHER DESIGN DEVELOPMENT.

NORTH POINT

Stanisic architects is the owner of the copyright subsisting in these drawings, plans, designs and specifications. They must not be used, reproduced or copied, in whole or in part, nor may the information, ideas and concepts therein contained (which are confidential to Stanisic architects) be disclosed to any person without the prior written consent of that company.

REV	DESCRIPTION OF CHANGE	DATE
H	DA REVISION	05.09.14
I	S96 ISSUE	01.05.15

PROJECT MANAGER
IONIC MANAGEMENT PTY. LTD
P: 02 8313 0240
cyan@ionic.net.au

LEVEL 37, CHIFLEY TOWER, 2 CHIFLEY SQUARE
SYDNEY 2000

CLIENT
PAYCE CONSOLIDATED LTD
P: 02 8080 2300
F: 02 8080 2399
reception@payce.com.au

ARCHITECTS:
stanisic architects
Level 2 243 Liverpool Street
East Sydney NSW 2010
T: (61 2) 9358 2586
E: info@stanisic.com.au
ABN 11 002633481

HDR | RICE DAUBNEY

PROJECT
**SOPA
"DOCK" 1 BURROWAY RD**
WENTWORTH POINT, THE WHARF SITE
SYDNEY OLYMPIC PARK

DRAWING TITLE
**TYPE B PRE & POST ADAPTATION
PLANS**

SCALE: (ORIGINAL SIZE A1)
As indicated

CHECKED:
JN

PROJECT NUMBER
14 003

DRAWING NUMBER
DA 3102

ISSUE:
I