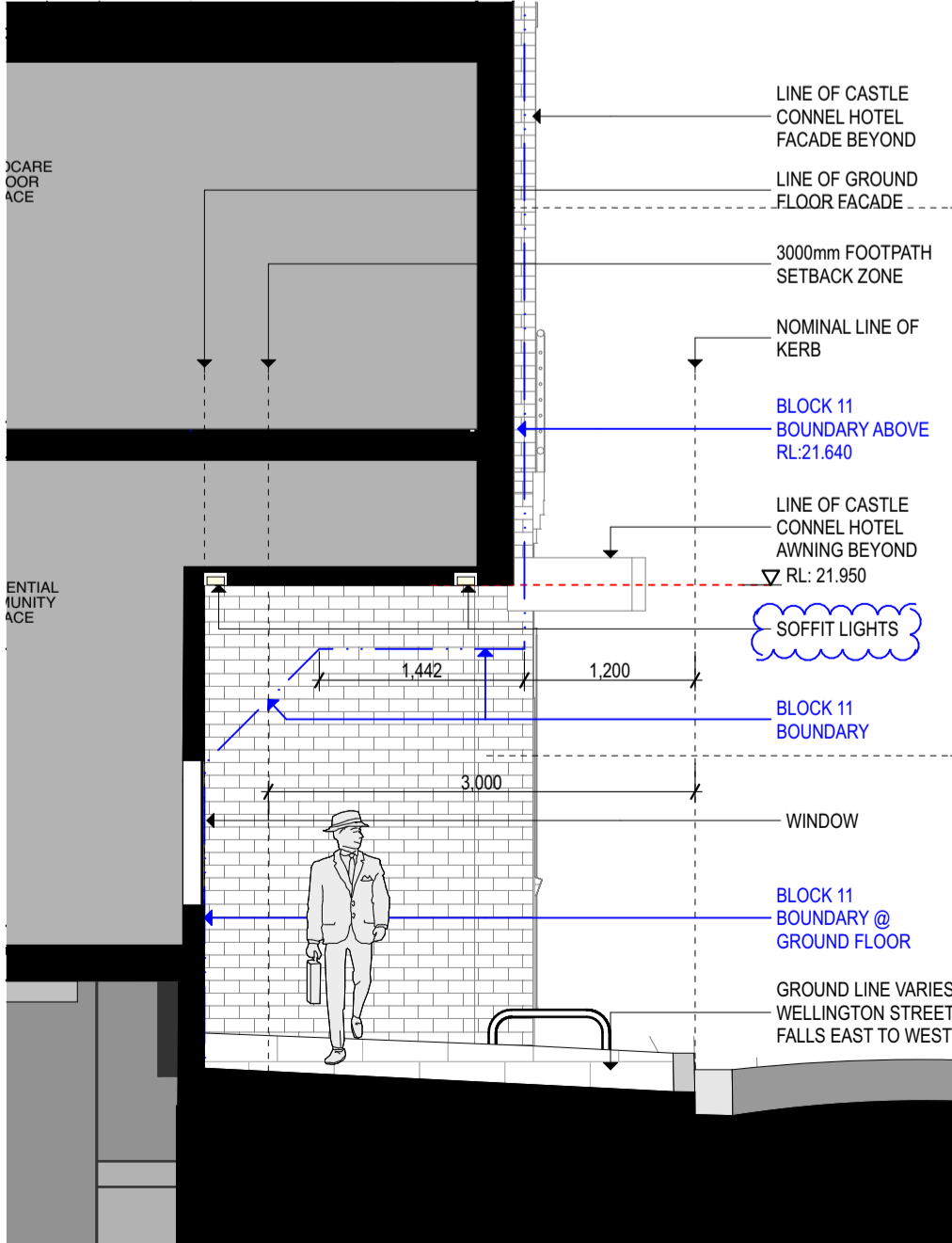


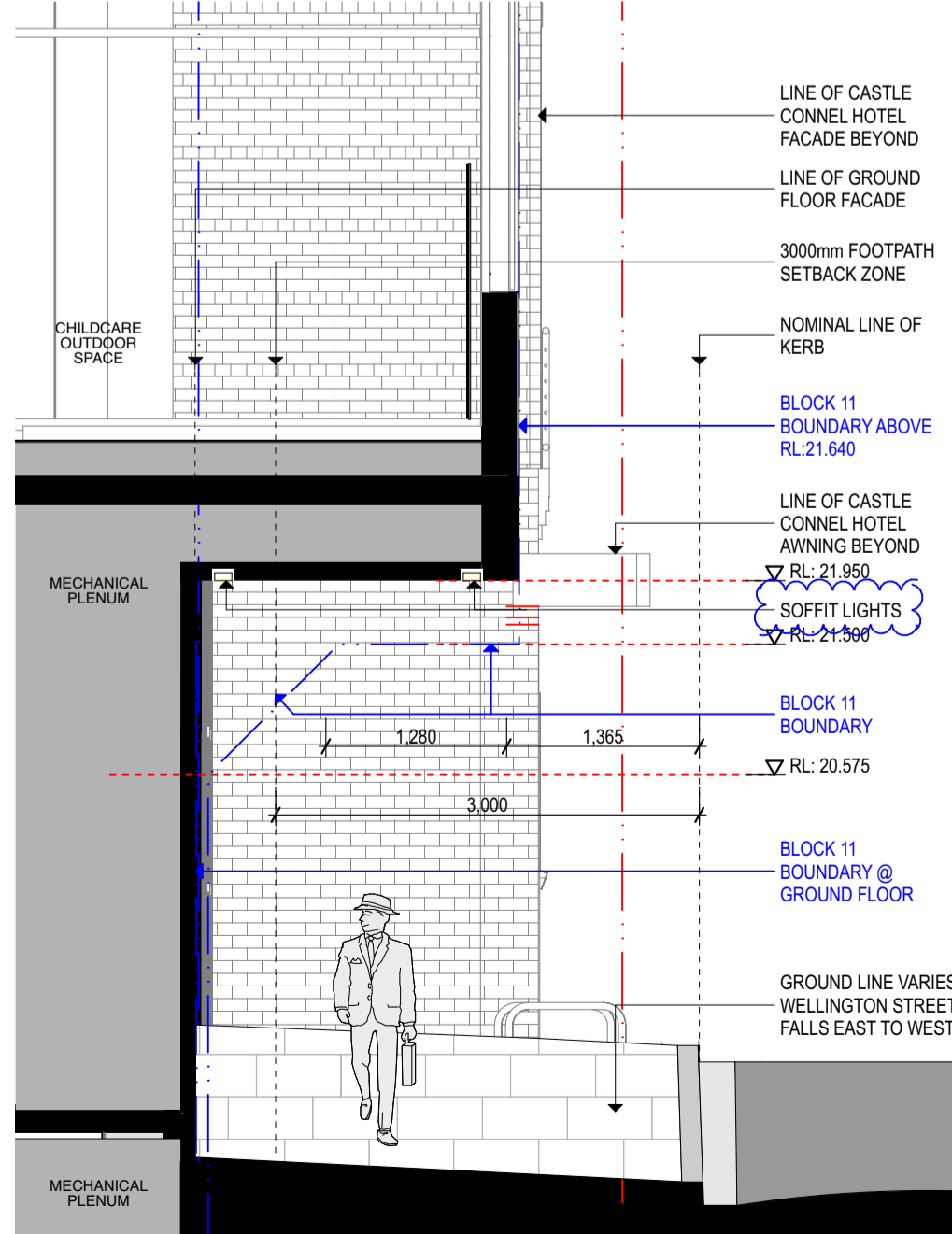
01 ELEVATION East SSSA 1:100



02 ELEVATION West SSSA 1:100



03 ELEVATION Wellington Street Setback 01 1:50



04 ELEVATION Wellington Street Setback 02 1:50

GENERAL NOTES
ALL DIMENSIONS AND EXISTING CONDITIONS SHALL BE CHECKED AND VERIFIED BY THE CONTRACTOR BEFORE PROCEEDING WITH THE WORK
ALL LEVELS RELATIVE TO AUSTRALIAN HEIGHT DATUM
DO NOT SCALE DRAWINGS. USE FIGURED DIMENSIONS ONLY

| LEGEND | |
|--------|--|
| S | STUDIO |
| 1B | 1 BED |
| 1BM | 1 BED + MEDIA NOOK |
| 1BS | 1 BED + STUDY |
| 2B | 2 BED |
| 2BM | 2 BED + MEDIA NOOK |
| 2BS | 2 BED + STUDY |
| 2BK | 2 BED DUAL KEY |
| 2BT | 2 BED 2 STOREY TERRACE |
| 3B | 3 BED |
| 3BM | 3 BED + MEDIA NOOK |
| 3BS | 3 BED + STUDY |
| 4B | 4 BED |
| | RETAIL + NON-RESIDENTIAL |
| | CHILDCARE |
| | EXTERNAL AREA |
| | COURTYARD/BALCONY/WINTER GARDEN |
| | 2 HOURS OF SUNLIGHT ACCESS |
| | NATURAL VENTILATION (NV) |
| | WIDE FRONTAGE NATURALLY VENTILATED |
| | ASSISTED VENTILATION |
| | SOUTH FACING APARTMENT |
| | ADAPTABLE APARTMENT |
| | LOBBY DUCTED VENTILATION |
| | APARTMENT ASSIST VENT LUCE |
| | ASSISTED VENTILATION |
| | GOOD VENTILATION |
| | NATURAL VENTILATION |
| | LOBBY CROSS VENTILATION |
| FAC001 | Anodised aluminium Curtain Wall System with integrated operable windows and aluminium clip-on custom profiled extrusions |
| FAC002 | Anodised aluminium Window Wall System with integrated operable windows and door systems (allow for 50/50 split between sliding and bi-fold functionality). Fenestration to facade system being anodised aluminium operable bi-fold perforated sunshade screens (allow for floor to floor coverage) |
| FAC003 | Anodised aluminium Window Wall System with integrated operable windows and door systems (allow for 50/50 split between sliding and bi-fold functionality). |
| FAC004 | Terracotta cladding (allow for minimum 1200 wide module) |
| FAC005 | Anodised aluminium sliding sunshade screen batter panels with battens at typically 100mm CC, 50mm SHS profile to framing and battens |
| FAC006 | Anodised aluminium Curtain Wall System with integrated operable windows and door systems (allow for 50/50 split between sliding and bi-fold functionality) with aluminium clip-on custom profiled extrusions |
| FAC007 | Anodised aluminium Curtain Wall System with integrated operable windows (allow for panel lift type e.g. 'Reptile') and door systems (allow for full height pivot functionality). Aluminium clip-on custom profiled extrusions to facade. |
| FAC008 | Full height aluminium clip-on custom profiled extrusions |
| FAC009 | Brick Type 1 colour (earthy rust). Bowral pressed or similar. Final selection as per materials board. |
| FAC010 | Rendered Masonry with integrated anodised aluminium window systems |
| FAC011 | Balustrade. Frameless glazing with powder coated 8mm plate aluminium portal framing. Glazing is not captured all round |
| FAC012 | Profiled anodised aluminium vertical battens using 'clip-on' fixing as noted in elevation (to stairs) |
| FAC013 | Fixed horizontal glass louvers |
| BS01 | Stainless steel Bollard |
| BS01 | Balustrade Type 01 |
| BYR1 | Stainless steel Bicycle Rail |
| DG1 | Decomposed Granite Gravel |
| DG2 | Decorative Gravel |
| HR2 | Stainless steel Handrail |
| LP1 | Lighting strip |
| P1 | Paving Type 1 City of Sydney Precast Paving |
| P2 | Paving Type 2 Precast Concrete Paving with Granite stone inlay |
| P3 | Paving Type 3 Granite Set to parking bays |
| P4 | Paving Type 4 Exposed Aggregate Concrete path |
| P5 | Paving Type 5 Precast paving to traffic areas |
| P6 | Paving Type 6 Brick Paving |
| PIT | Proposed Service Pits |
| RW1 | Brick base with a Timber capping Retaining wall |
| RW2 | Brick base with a Precast concrete capping Retaining wall |
| RW3 | In situ concrete Retaining wall |
| RW4 | Heritage Interpretation wall |
| ST1 | Corten Steel Edging |
| TD1 | Timber Bench Seats |
| TD2 | Timber Composite vertical batten screen |
| TD3 | Timber Decking |
| | CCTV Camera |

| 05 | 08/09/2017 | ISSUED FOR S96 APPROVAL | FJMT |
|------|------------|--------------------------|------|
| 04 | 29/11/2016 | ISSUED FOR S96 APPROVAL | FJMT |
| 03 | 21/06/2016 | REVISED SSSA | FJMT |
| 02 | 03/07/2015 | REFER REVISION CLOUDS | FJMT |
| 01 | 24/10/2014 | ISSUED FOR SSSA APPROVAL | FJMT |
| REV. | DATE | DESCRIPTION | BY |

CLIENT
FRASERS PROPERTY
Fraser's Broadway
Suite 11, Lumiere Commercial,
Level 12, 101 Bathurst Street,
Sydney, NSW, 2000, Australia

ARCHITECT
fjmt
francis-jones morehen thorp
SYDNEY
Level 5, 70 King Street
Sydney NSW 2000 Australia
T +61 2 9251 7077
F +61 2 9251 7072
E fjm@fjmt.com.au
W www.fjmt.com.au

PROJECT
Central Park Block 11
O'Connor Street, Chippendale
Sydney
Fraser's Broadway

TITLE
GROUND PLANE DETAIL ELEVATIONS
Detail Elevations - East and West

| | | | | |
|-----------|--------------------|----------|------|--------------|
| SCALE | 1:100 @ A1 | DRAWN | FJMT | PROJECT CODE |
| DATE | 24/10/2014 | APPROVED | SB | FB11 |
| SHEET NO. | SSDA-11-503 | REVISION | | |

WHEN PRINTED AT 50% ON A3 THE SCALE IS 1:200
Issued for Approval