

0 1 2 5m

**GENERAL NOTES**

- ALL DIMENSIONS AND EXISTING CONDITIONS SHALL BE CHECKED AND VERIFIED BY THE CONTRACTOR BEFORE PROCEEDING WITH THE WORK
- ALL LEVELS RELATIVE TO AUSTRALIAN HEIGHT DATUM
- DO NOT SCALE DRAWINGS. USE FIGURED DIMENSIONS ONLY

**LEGEND**

S	STUDIO
1B	1 BED
1BM	1 BED + MEDIA NOOK
1BS	1 BED + STUDY
2B	2 BED
2BM	2 BED + MEDIA NOOK
2BS	2 BED + STUDY
2BK	2 BED DUAL KEY
2BT	2 BED 2 STOREY TERRACE
3B	3 BED
3BM	3 BED + MEDIA NOOK
3BS	3 BED + STUDY
3BK	3 BED DUAL KEY
	RETAIL + NON-RESIDENTIAL
	CHILDCARE
	EXTERNAL AREA
	COURTYARD/BALCONY/WINTER-GARDEN
	2 HOURS OF SUNLIGHT ACCESS
	NATURAL VENTILATION (NV)
	WIDE FRONTAGE NATURALLY VENTILATED
	ASSISTED VENTILATION
	SOUTH FACING APARTMENT
	ADAPTABLE APARTMENT
	LOBBY DUCTED VENTILATION
	APARTMENT ASSIST VENT BLADE
	ASSISTED VENTILATION
	GOOD VENTILATION
	NATURAL VENTILATION
	LOBBY CROSS VENTILATION
FAC01	Anodised aluminium Curtain Wall System with integrated operable windows (allow for euro style multifunction hardware) clip-on custom profiled extrusions
FAC02	Anodised aluminium Window Wall System with integrated operable windows (allow for euro style multifunction hardware) and door systems (allow for 50/50 split between sliding and bi-fold functionality). Fenestration to facade system being anodised aluminium operable bi-fold perforated sunshade screens (allow for floor to floor coverage)
FAC03	Anodised aluminium Window Wall System with integrated operable window (allow for euro style multifunction hardware) and door systems (allow for 50/50 split between sliding and bi-fold functionality). Fenestration to facade system being anodised aluminium operable bi-fold perforated sunshade screens (allow for floor to floor coverage)
FAC04	Terracotta cladding (allow for minimum 1200 wide module)
FAC05	Anodised aluminium sliding sunshade screen batten panels with battens at typically 100mm CC, 50mm SHS profile to framing and battens
FAC06	Anodised aluminium Window Wall System with integrated operable windows (allow for euro style multifunction hardware) and door systems (allow for 50/50 split between sliding and bi-fold functionality). Profiled timber battens using "clip-on" fixing as noted in elevation.
FAC07	Anodised aluminium Window Wall System with integrated operable windows (allow for panel lift type e.g. "Reclina") and door systems (allow for full height panel functionality). Fenestration to facade system being profiled timber battens using "clip-on" fixing as noted in elevation.
FAC08	Full height timber batten screens
FAC09	Brick Type 1 colour (earthly rust). Bowral pressed or similar. Final selection as per materials board
FAC10	Rendered Masonry with integrated anodised aluminium window systems
FAC11	Bakustrade, Frameless glazing with powder coated 6mm plate aluminium portal framing. Glazing is not captured all round
FAC12	Profiled anodised aluminium vertical batten using "clip-on" fixing as noted in elevation.
BD1	Stainless steel Bolted
BYR1	Stainless steel Bicycle Rail
DG1	Decomposed Granite Gravel
DG2	Decorative Gravel
HR2	Stainless steel Handrail
LP1	Lighting strip
P1	Paving Type 1
P2	Paving Type 2
P3	Paving Type 3
P4	Paving Type 4
P5	Paving Type 5
P6	Paving Type 6
PT	Proposed Service Pits
RW1	Brick base with a Timber capping Retaining wall
RW2	Brick base with a Precast concrete capping Retaining wall
RW3	In situ concrete Retaining wall
RW4	Heritage Interpretation wall
ST1	Corten Steel Edging
TD1	Timber Bench Seats
TD2	Timber Composite vertical batten screen
TD3	Timber Decking

02	03/07/2015	ISSUED FOR SSDA APPROVAL	FJMT
01	24/10/2014	ISSUED FOR SSDA APPROVAL	FJMT
REV.	DATE	DESCRIPTION	BY
CLIENT			



ARCHITECT

**fjmt**

francis-jones morehen thorp

SYDNEY

Level 5, 70 King Street  
Sydney NSW 2000 Australia  
T +61 2 9251 7077  
F +61 2 9251 7072  
E fjmt@fjmt.com.au  
W www.fjmt.com.au

PROJECT

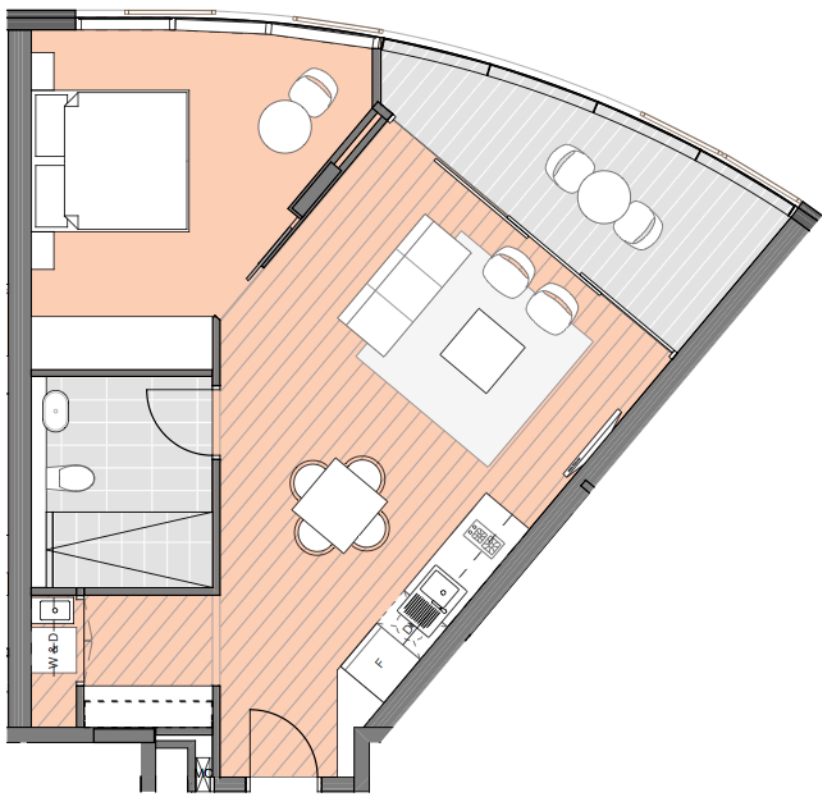
**Central Park Block 11**  
O'Connor Street, Chippendale  
Sydney  
Fraser's Broadway

TITLE

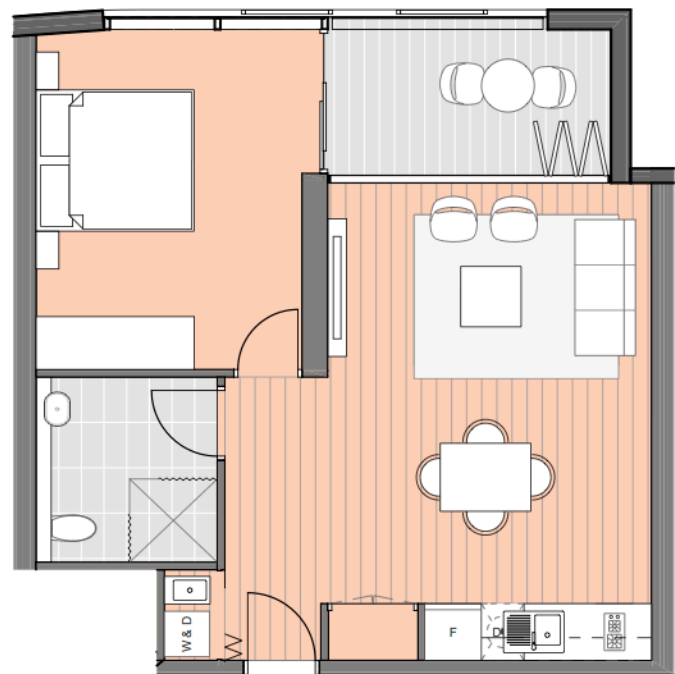
**TYPICAL LAYOUTS**  
Adaptable Apartments

SCALE	1:100 @ A1	DRAWN	FJMT	PROJECT CODE
DATE	17/10/14	APPROVED	SB	<b>FB11</b>
SHEET NO.	<b>SSDA-11-602</b>	REVISION		<b>02</b>

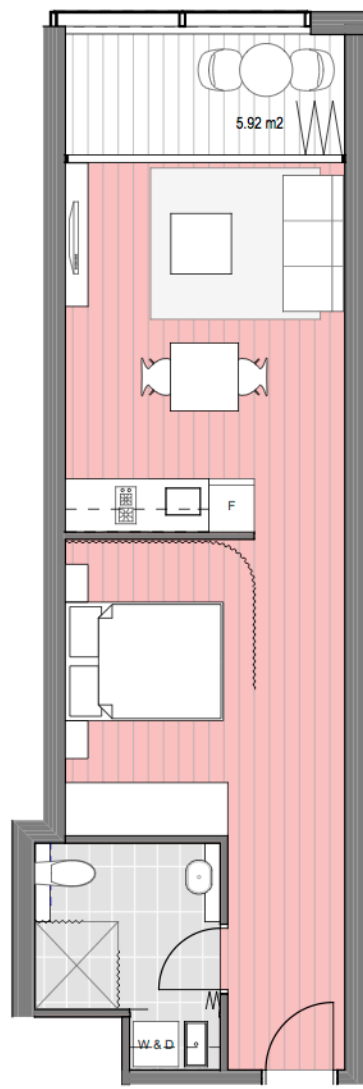
**Issued for Approval**



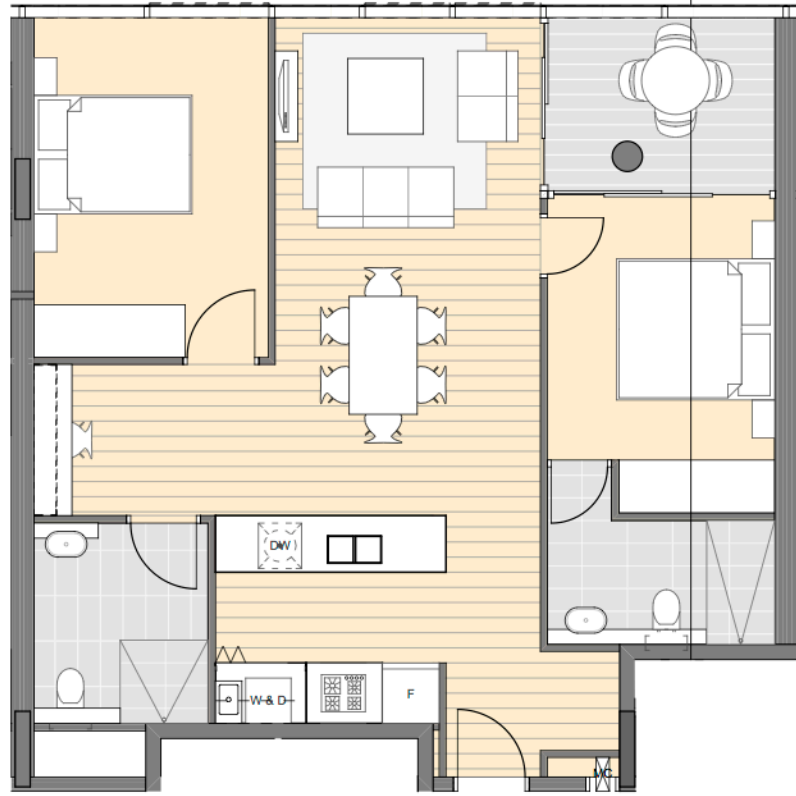
**01** PLAN 1 BED PRE-ADAPTABLE  
1:100



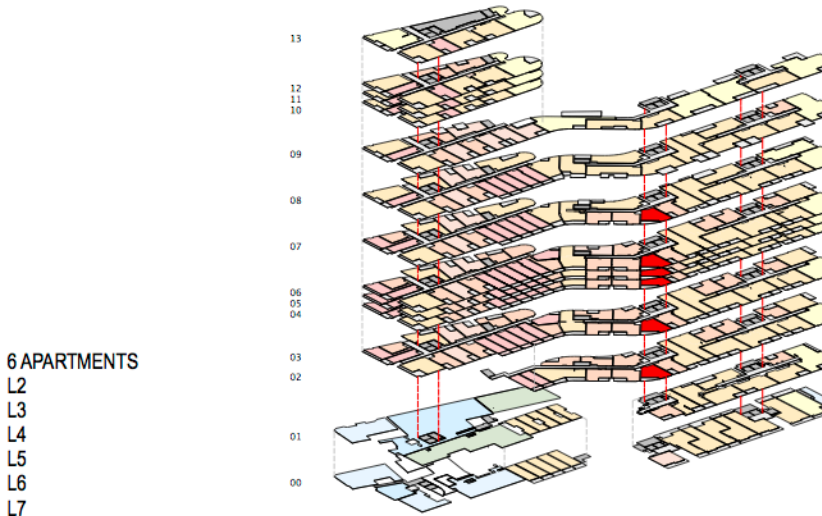
**03** PLAN 1 BED PRE-ADAPTABLE  
1:100



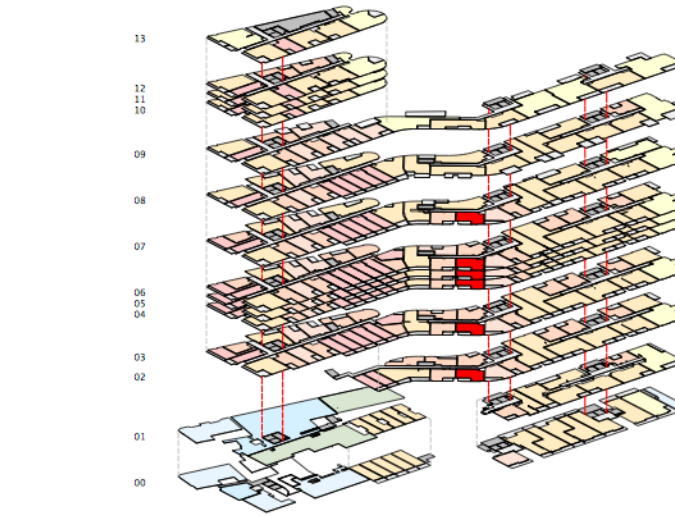
**05** PLAN STUDIO PRE-ADAPTABLE  
1:100



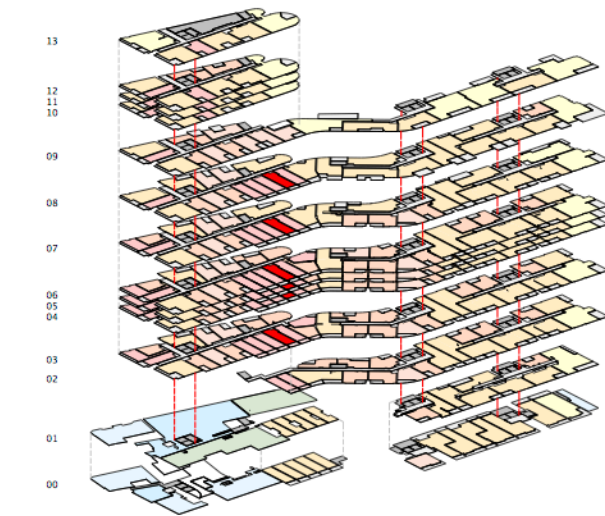
**07** PLAN 2 BED L10-L13 PRE-ADAPTABLE  
1:100



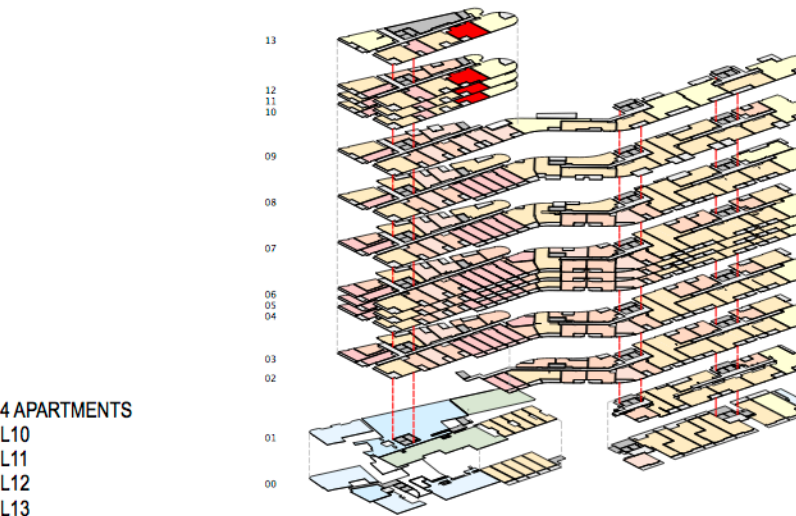
6 APARTMENTS  
L2  
L3  
L4  
L5  
L6  
L7



6 APARTMENTS  
L2  
L3  
L4  
L5  
L6  
L7



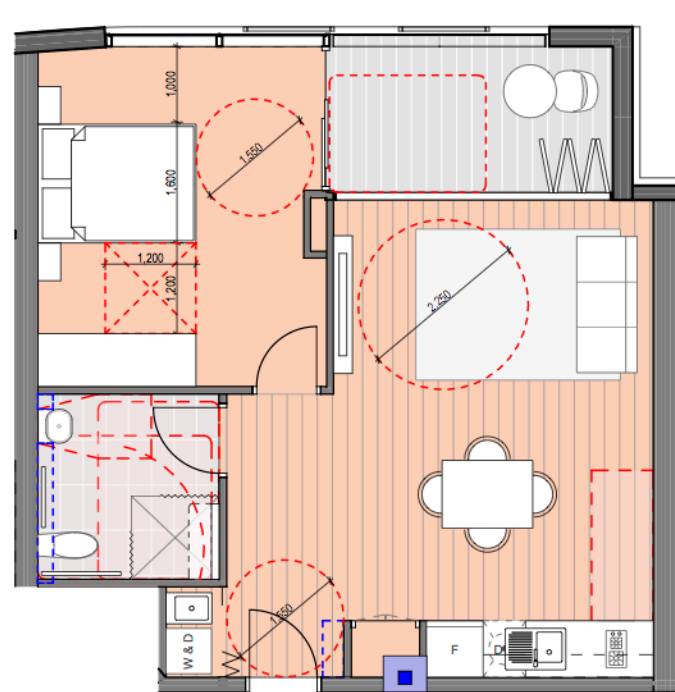
4 APARTMENTS  
L10  
L11  
L12  
L13



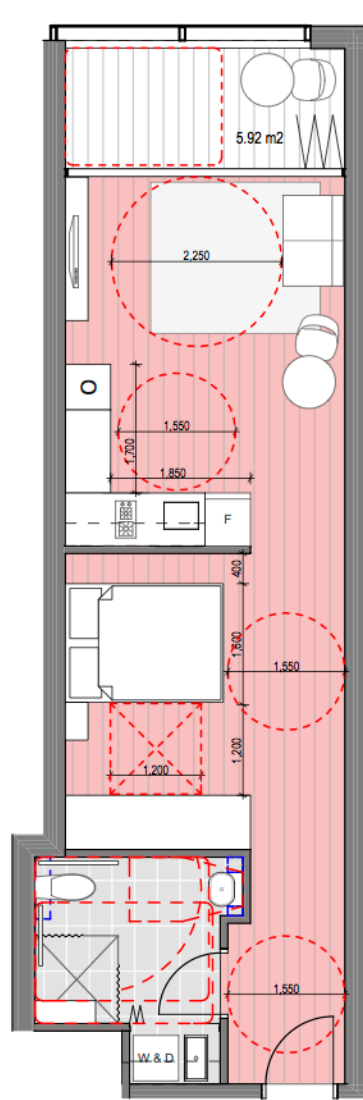
4 APARTMENTS  
L10  
L11  
L12  
L13



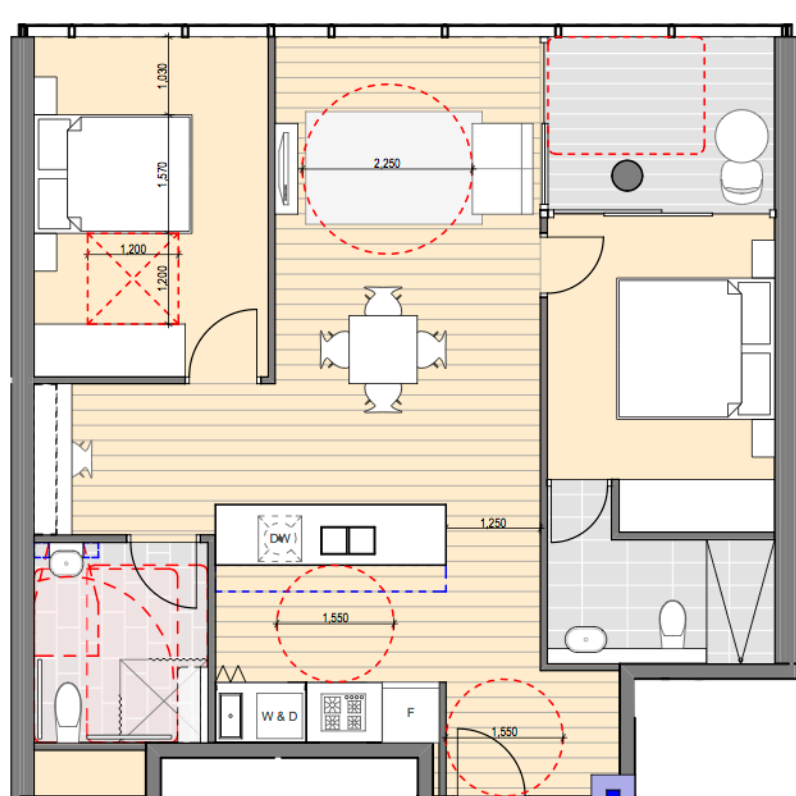
**02** PLAN 1 BED POST-ADAPTABLE  
1:100



**04** PLAN 1 BED POST-ADAPTABLE  
1:100



**06** PLAN STUDIO POST-ADAPTABLE  
1:100



**08** PLAN 2 BED L10-L13 POST-ADAPTABLE  
1:100