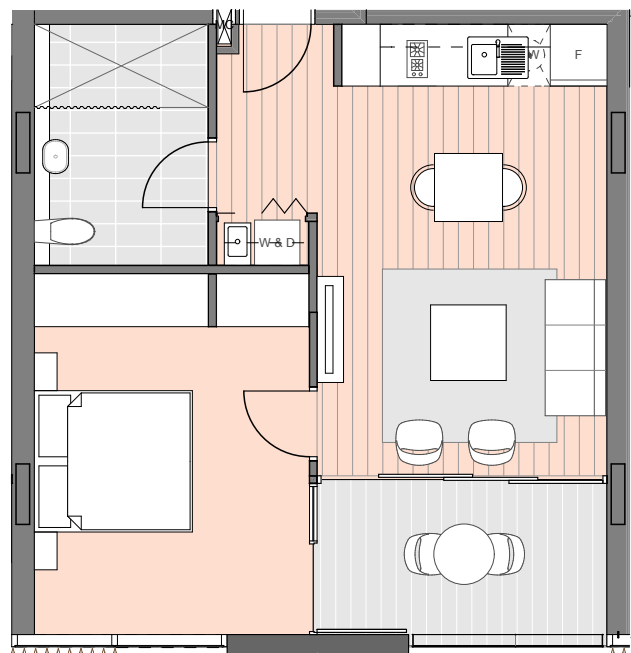
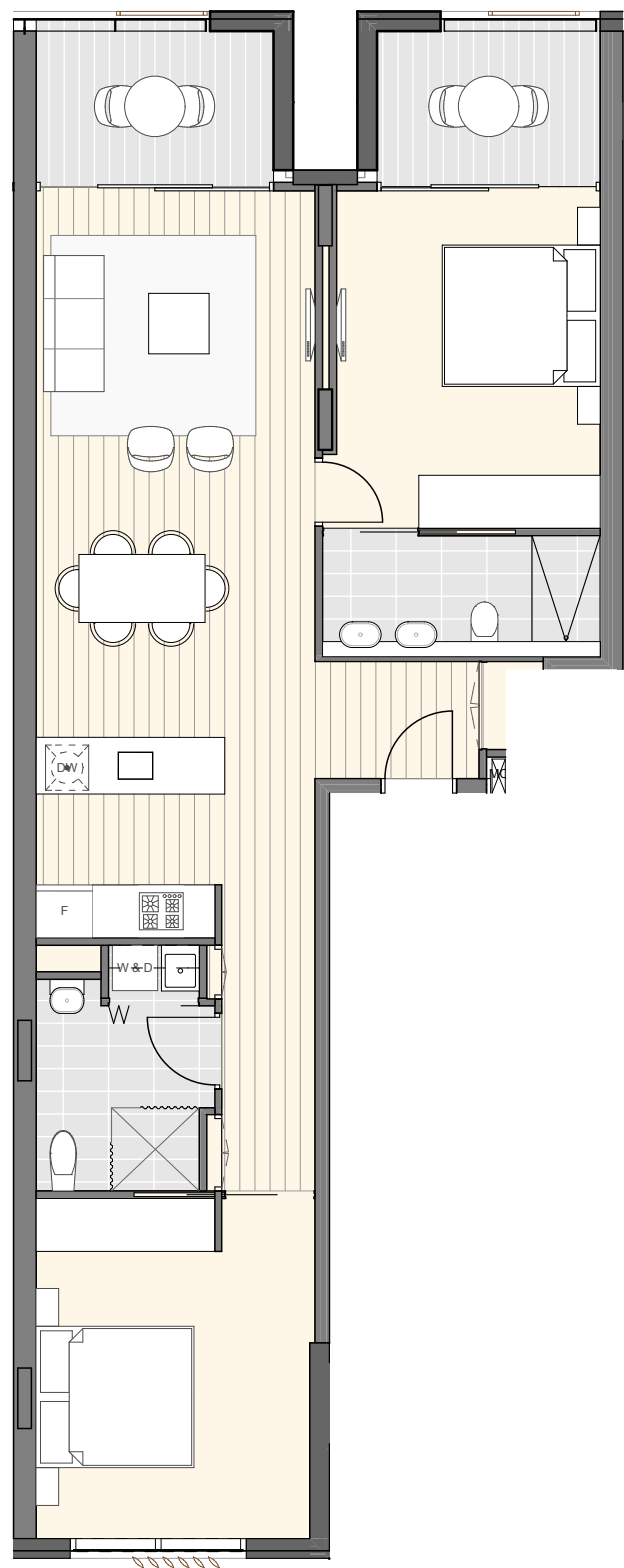


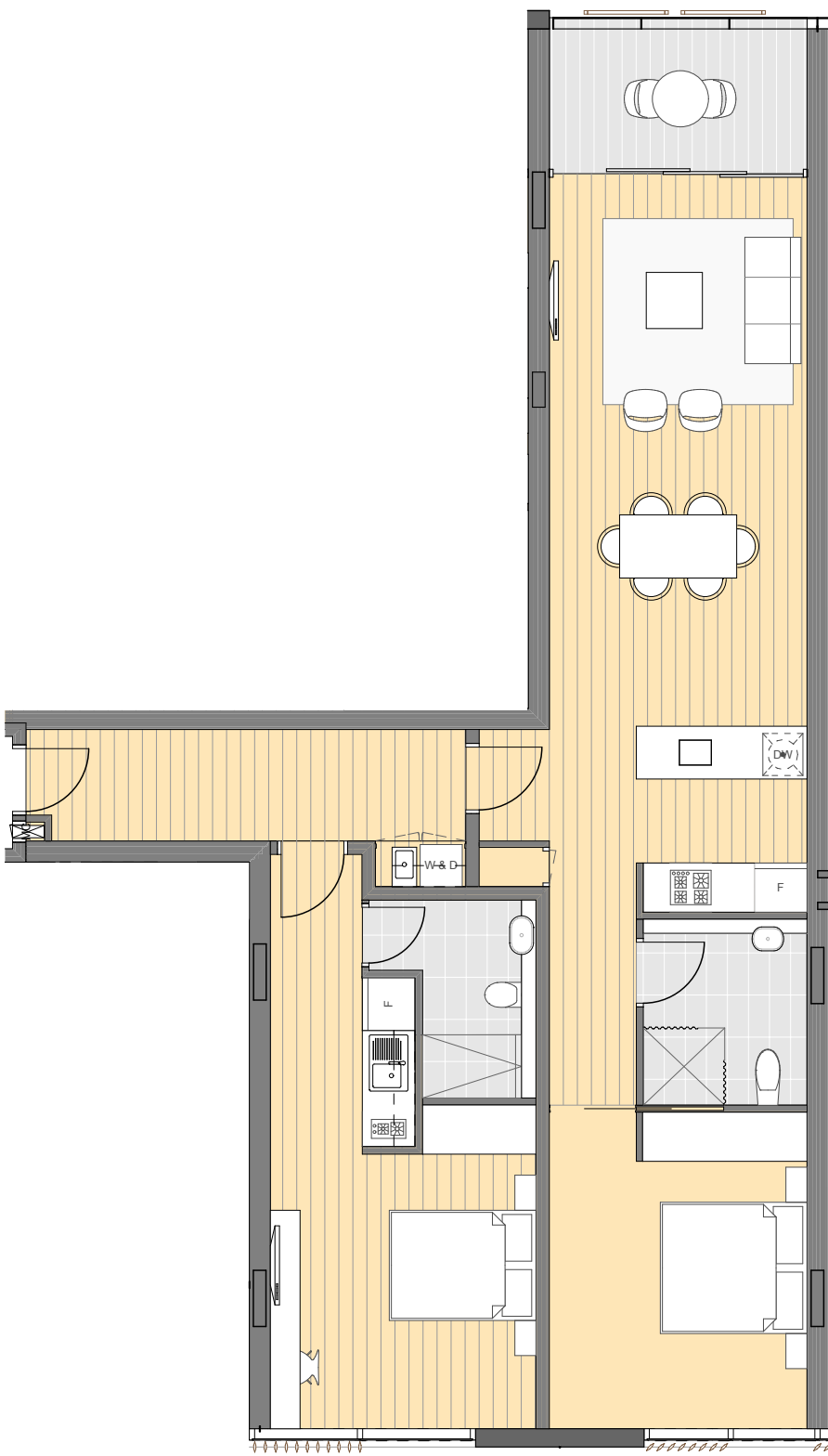
01 PLAN 3 BED PRE-ADAPTABLE
1:100



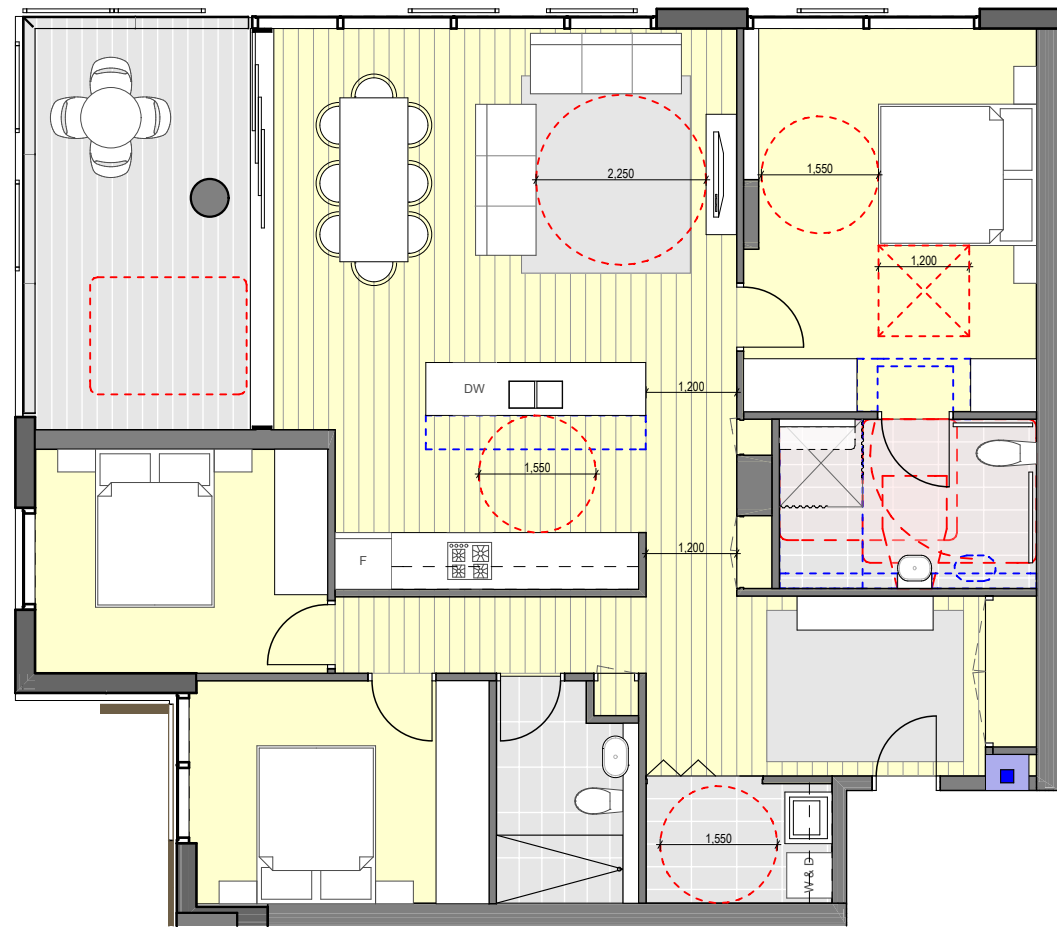
03 PLAN 1 BED PRE-ADAPTABLE
1:100



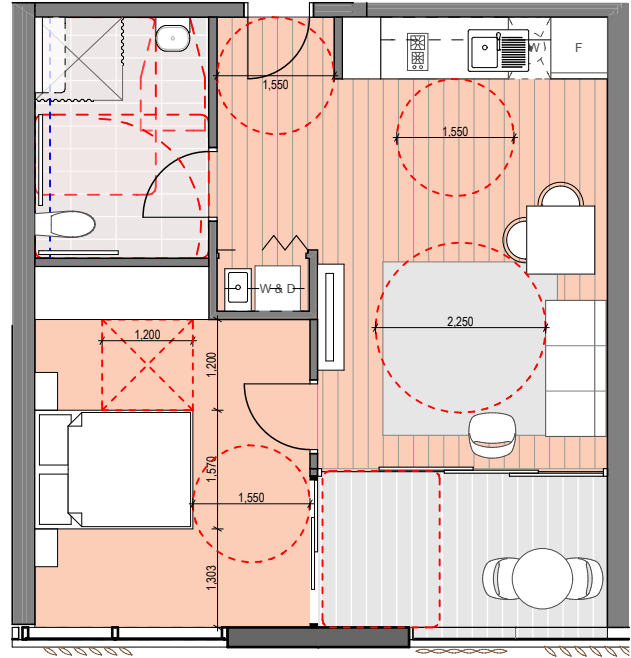
05 PLAN 1 BED PRE-ADAPTABLE
1:100



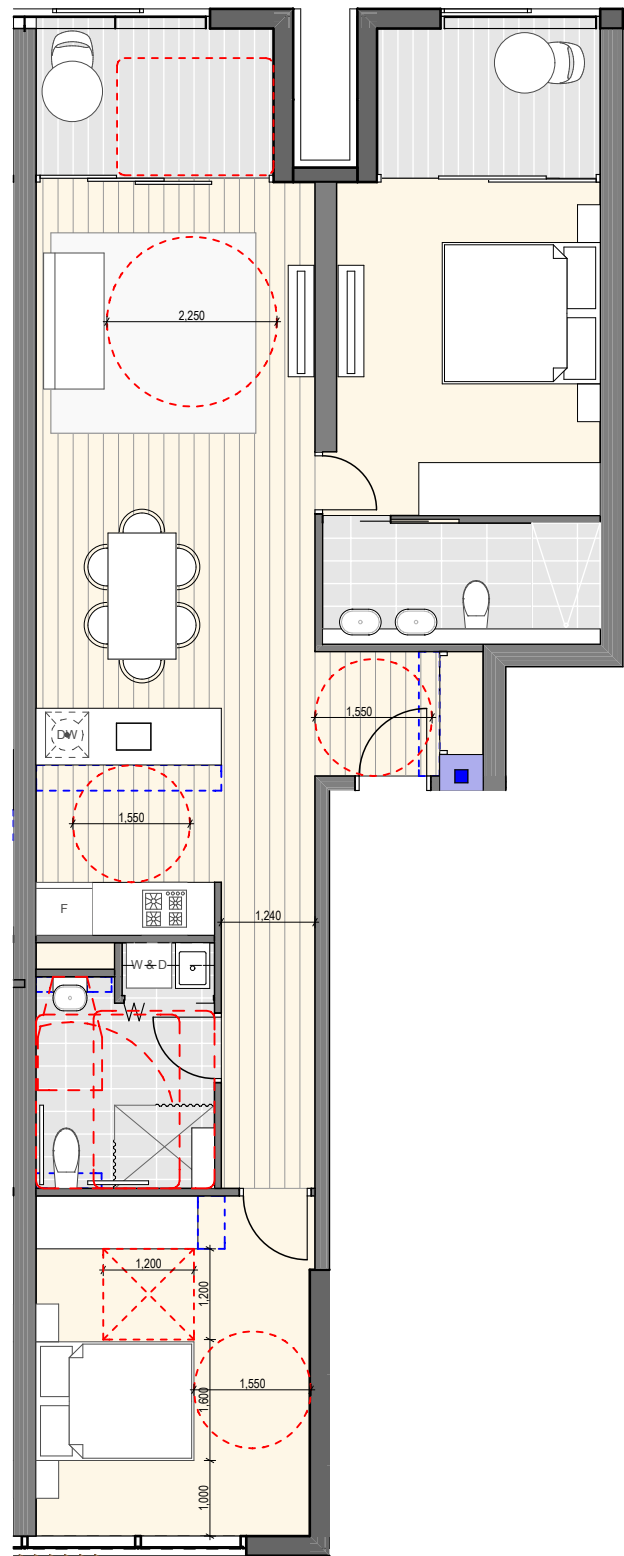
07 PLAN 2 BED KEY PRE-ADAPTABLE
1:100



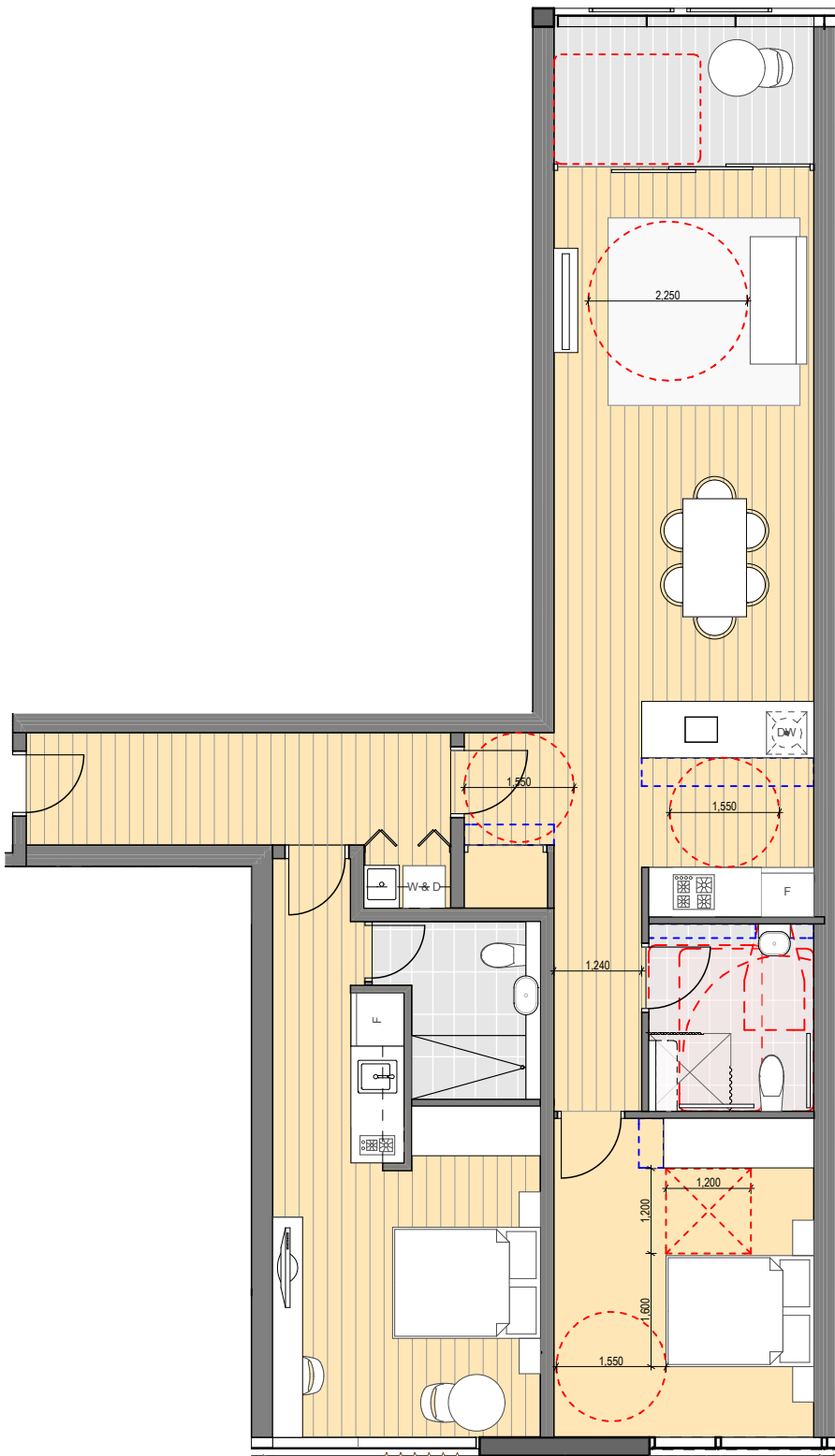
02 PLAN 3 BED POST-ADAPTABLE
1:100



04 PLAN 1 BED POST-ADAPTABLE
1:100



06 PLAN 1 BED POST-ADAPTABLE
1:100



08 PLAN 2 BED KEY POST-ADAPTABLE
1:100

GENERAL NOTES
ALL DIMENSIONS AND EXISTING CONDITIONS SHALL BE CHECKED AND VERIFIED BY THE CONTRACTOR BEFORE PROCEEDING WITH THE WORK
ALL LEVELS RELATIVE TO AUSTRALIAN HEIGHT DATUM
DO NOT SCALE DRAWINGS. USE FIGURED DIMENSIONS ONLY

LEGEND

S	STUDIO
1B	1 BED
1BM	1 BED + MEDIA NOOK
1BS	1 BED + STUDY
2B	2 BED
2BM	2 BED + MEDIA NOOK
2BS	2 BED + STUDY
2BK	2 BED DUAL KEY
2BT	2 BED 2 STOREY TERRACE
3B	3 BED
3BM	3 BED + MEDIA NOOK
3BS	3 BED + STUDY
3BK	3 BED DUAL KEY
	RETAIL + NON-RESIDENTIAL
	CHILDCARE
	EXTERNAL AREA
	COURTYARD/BALCONY/WINTER-GARDEN
	2 HOURS OF SUNLIGHT ACCESS
	NATURAL VENTILATION (NV)
	WIDE FRONTAGE NATURALLY VENTILATED
	ASSISTED VENTILATION
	SOUTH FACING APARTMENT
	ADAPTABLE APARTMENT
	LOBBY DUCTED VENTILATION
	APARTMENT ASSIST VENT BLADE
	ASSISTED VENTILATION
	GOOD VENTILATION
	NATURAL VENTILATION
	LOBBY CROSS VENTILATION
FAC01	Anodised aluminium Curtain Wall System with integrated operable windows (allow for euro style multifunction hardware) clip-on custom profiled extrusions
FAC02	Anodised aluminium Window Wall System with integrated operable windows (allow for euro style multifunction hardware) and door systems (allow for 50/50 split between sliding and bi-fold functionality). Fenestration to facade system being anodised aluminium operable bi-fold perforated sunshade screens (allow for floor to floor coverage)
FAC03	Anodised aluminium Window Wall System with integrated operable windows (allow for euro style multifunction hardware) and door systems (allow for 50/50 split between sliding and bi-fold functionality). Fenestration to facade system being anodised aluminium operable bi-fold perforated sunshade screens (allow for floor to floor coverage)
FAC04	Terracotta cladding (allow for minimum 1200 wide module)
FAC05	Anodised aluminium sliding sunshade screen battens panels with battens at typically 100mm CC, 50mm SHS profile to framing and battens
FAC06	Anodised aluminium Window Wall System with integrated operable windows (allow for euro style multifunction hardware) and door systems (allow for 50/50 split between sliding and bi-fold functionality). Profiled timber battens using "clip-on" fixing as noted in elevation
FAC07	Anodised aluminium Window Wall System with integrated operable windows (allow for panel lift type e.g. "Revelita") and door systems (allow for full height panel functionality). Fenestration to facade system being profiled timber battens using "clip-on" fixing as noted in elevation
FAC08	Full height timber batten screens
FAC09	Brick Type 1 colour (earthly rust). Bowral pressed or similar. Final selection as per materials board
FAC10	Rendered Masonry with integrated anodised aluminium window systems
FAC11	Balustrade. Frameless glazing with powder coated firm plate aluminium portal framing. Glazing is not captured all round
FAC12	Profiled anodised aluminium vertical batten using "clip-on" fixing as noted in elevation
BD1	Stainless steel Bollard
BYR1	Stainless steel Bicycle Rack
DG1	Decomposed Granite Gravel
DG2	Decorative Gravel
HR2	Stainless steel Handrail
LP1	Lighting strip
P1	Paving Type 1 City of Sydney Precast Paving
P2	Paving Type 2 Precast Concrete Paving with Granite stone inlay
P3	Paving Type 3 Granite Setts (to parking bays)
P4	Paving Type 4 Exposed Aggregate Concrete path
P5	Paving Type 5 Precast paving for traffic areas
P6	Paving Type 6 Brick Paving
PT	Proposed Service Pits
RW1	Brick base with a Timber capping Retaining wall
RW2	Brick base with a Precast concrete capping Retaining wall
RW3	In situ concrete Retaining wall
RW4	Heritage Interpretation wall
ST1	Corten Steel Edging
TD1	Timber Bench Seats
TD2	Timber Composite vertical batten screen
TD3	Timber Decking

01	24/10/2014	ISSUED FOR SSDA APPROVAL	FJMT
REV.	DATE	DESCRIPTION	BY

CLIENT
FRASERS BROADWAY
Suite 11, Lumiere Commercial,
Level 12, 101 Bathurst Street,
Sydney, NSW, 2000, Australia

ARCHITECT
fjmt
francis-jones morehen thorp
NONPRACTICE ARCHITECT RICHARD FRANCIS-JONES (REG NO 5301)

PROJECT
Central Park Block 11
O'Connor Street, Chippendale
Sydney
Fraser's Broadway

TITLE
TYPICAL LAYOUTS
Adaptable Apartments

SCALE	1:100 @ A1	DRAWN	FJMT	PROJECT CODE
DATE	17/10/14	APPROVED	SB	FB11
SHEET NO.	SSDA-11-601	REVISION		01

WHEN PRINTED AT 50% ON A3 THE SCALE IS 1:200
Issued for Approval