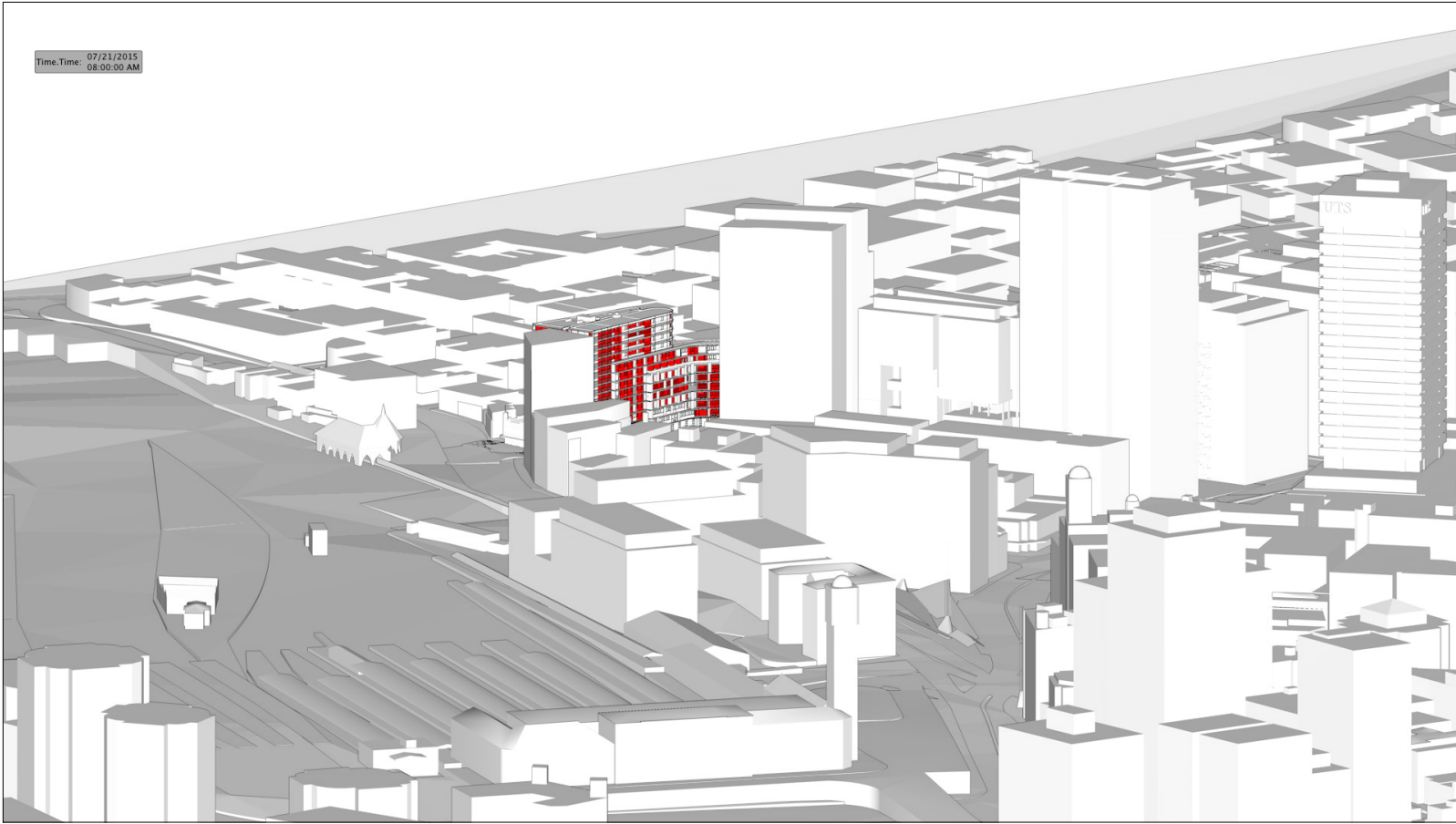


01 3D VIEW July 0700



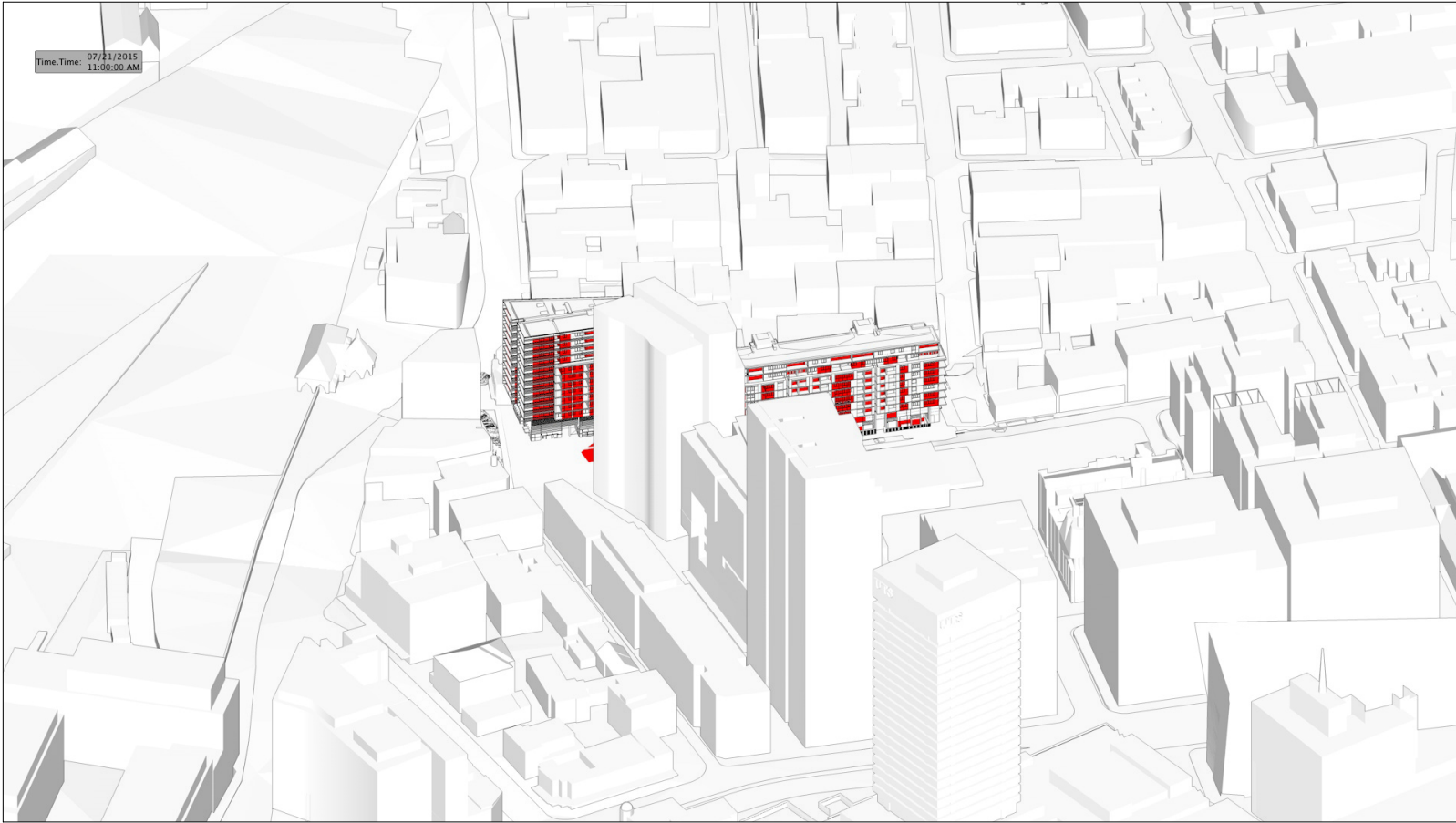
02 3D VIEW July 0800



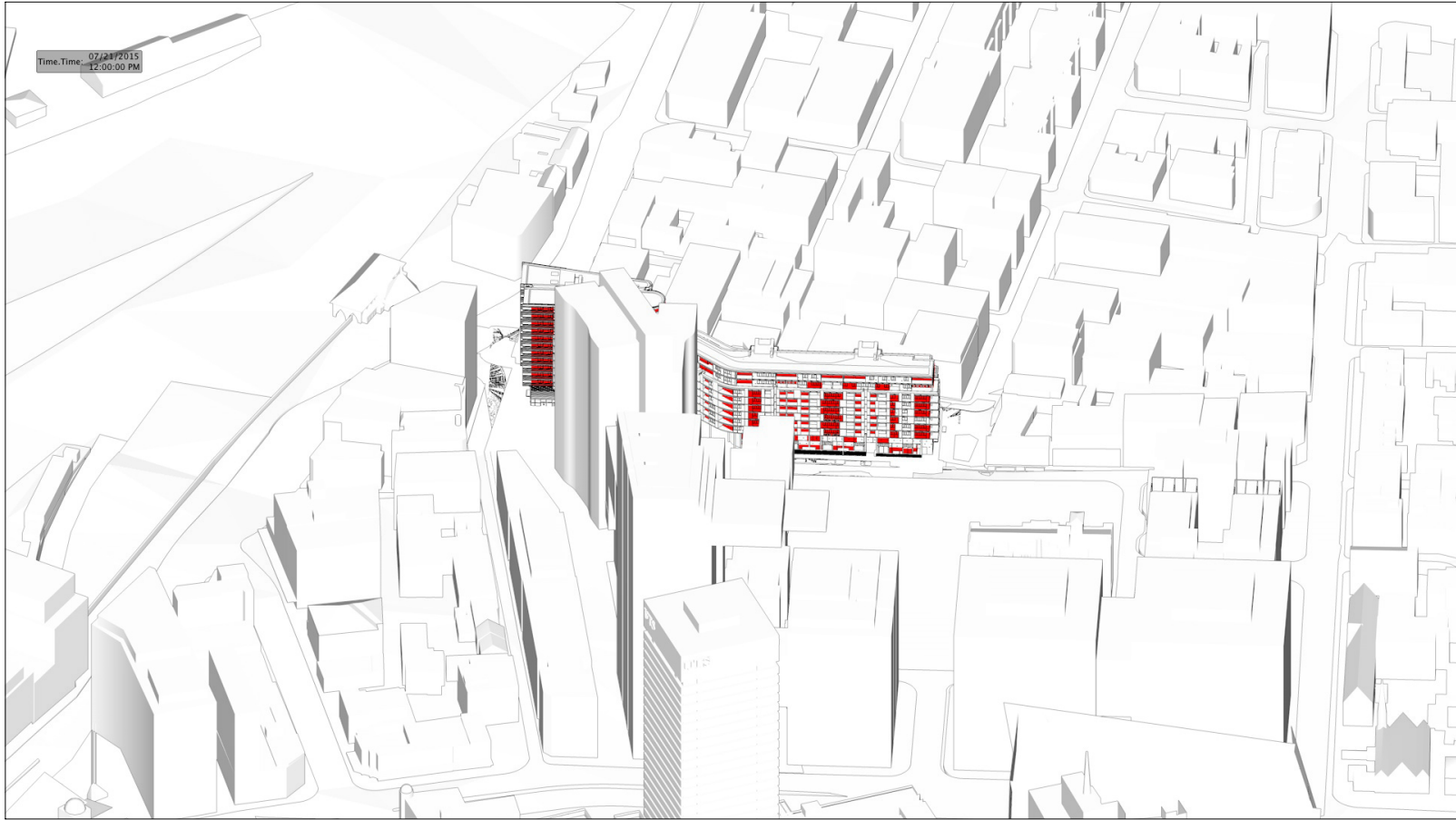
03 3D VIEW July 0900



04 3D VIEW July 1000



05 3D VIEW July 1100



06 3D VIEW July 1200



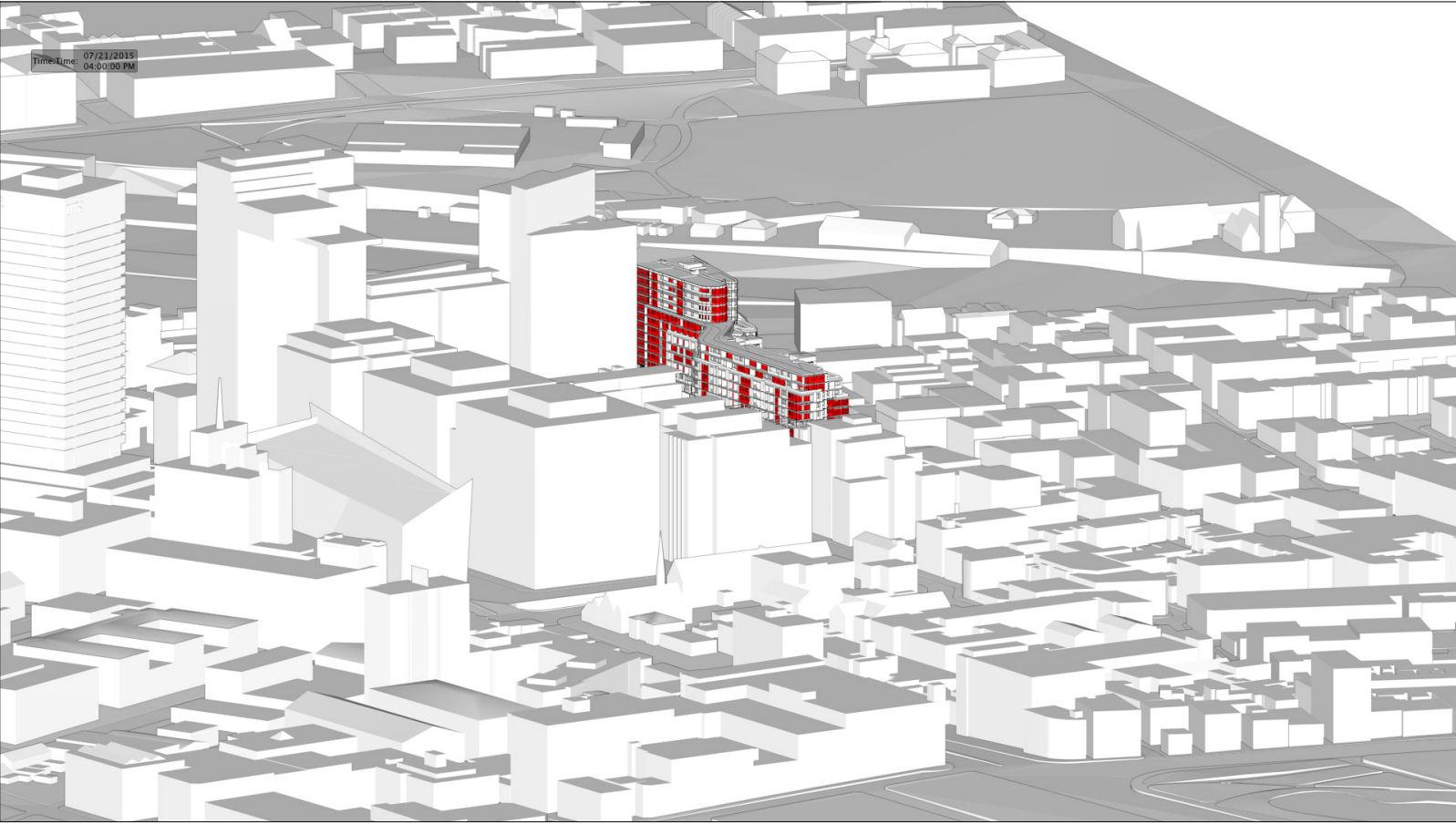
07 3D VIEW July 1300



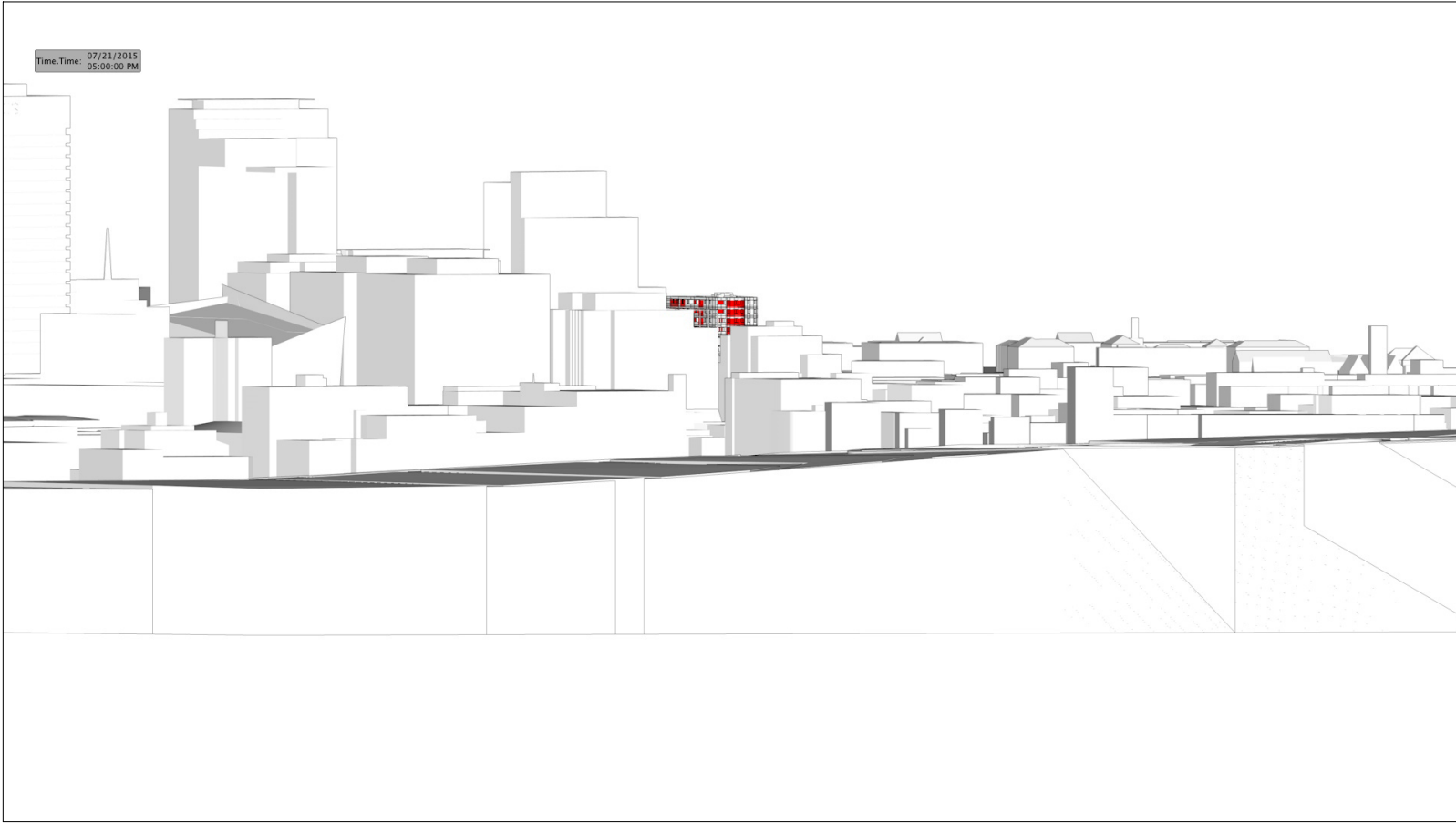
08 3D VIEW July 1400



09 3D VIEW July 1500



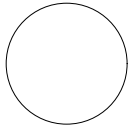
10 3D VIEW July 1600



11 3D VIEW July 1700



12 3D VIEW July 1800



- GENERAL NOTES**
- ALL DIMENSIONS AND EXISTING CONDITIONS SHALL BE CHECKED AND VERIFIED BY THE CONTRACTOR BEFORE PROCEEDING WITH THE WORK
 - ALL LEVELS RELATIVE TO AUSTRALIAN HEIGHT DATUM
 - DO NOT SCALE DRAWINGS. USE FIGURED DIMENSIONS ONLY

LEGEND

S	STUDIO
1B	1 BED
1BM	1 BED + MEDIA NOOK
1BS	1 BED + STUDY
2B	2 BED
2BM	2 BED + MEDIA NOOK
2BS	2 BED + STUDY
2BK	2 BED DUAL KEY
2BT	2 BED 2 STOREY TERRACE
3B	3 BED
3BM	3 BED + MEDIA NOOK
3BS	3 BED + STUDY
3BK	3 BED DUAL KEY
	RETAIL + NON-RESIDENTIAL
	CHILDCARE
	EXTERNAL AREA
	COURTYARD/BALCONY/WINTER-GARDEN

- 2 HOURS OF SUNLIGHT ACCESS
- NATURAL VENTILATION (NV)
- WIDE FRONTAGE NATURALLY VENTILATED
- ASSISTED VENTILATION
- SOUTH FACING APARTMENT
- ADAPTABLE APARTMENT
- LOBBY DUCTED VENTILATION
- APARTMENT ASSIST VENT DUCT
- ASSISTED VENTILATION
- GOOD VENTILATION
- NATURAL VENTILATION
- LOBBY CROSS VENTILATION

- FAC01** Anodised aluminium Curtain Wall System with integrated operable windows (allow for euro style multifunction hardware) clip-on custom profiled extrusions
- FAC02** Anodised aluminium Window Wall System with integrated operable windows (allow for euro style multifunction hardware) and door systems (allow for 50/50 split between sliding and bi-fold functionality). Fenestration to facade system being anodised aluminium operable bi-fold perforated sunshade screens (allow for floor to floor coverage)
- FAC03** Anodised aluminium Window Wall System with integrated operable windows (allow for euro style multifunction hardware) and door systems (allow for 50/50 split between sliding and bi-fold functionality). Fenestration to facade system being anodised aluminium operable bi-fold perforated sunshade screens (allow for floor to floor coverage)
- FAC04** Terracotta cladding (allow for minimum 1200 wide module)
- FAC05** Anodised aluminium sliding sunshade screen batten panels with battens at typically 100mm OC, 50mm SHS profile to framing and battens
- FAC06** Anodised aluminium Window Wall System with integrated operable windows (allow for euro style multifunction hardware) and door systems (allow for 50/50 split between sliding and bi-fold functionality). Profiled timber battens using "clip-on" fixing as noted in elevation.
- FAC07** Anodised aluminium Window Wall System with integrated operable windows (allow for panel lift type e.g. "Reclina") and door systems (allow for full height panel functionality). Fenestration to facade system being profiled timber battens using "clip-on" fixing as noted in elevation.
- FAC08** Full height timber batten screens
- FAC09** Brick Type 1 colour (earthly rust). Bowral pressed or similar. Final selection as per materials board
- FAC10** Rendered Masonry with integrated anodised aluminium window systems
- FAC11** Bekustrade. Frameless glazing with powder coated firm plate aluminium portal framing. Glazing is not captured all round
- FAC12** Profiled anodised aluminium vertical batten using "clip-on" fixing as noted in elevation.
- B01** Stainless steel Bollard
- BYR1** Stainless steel Bicycle Rail
- DG1** Decomposed Granite Gravel
- DG2** Decorative Gravel
- HR2** Stainless steel Handrail
- LP1** Lighting strip
- P1** Paving Type 1 City of Sydney Precast Paving
- P2** Paving Type 2 Precast Concrete Paving with Granite stone inlay
- P3** Paving Type 3 Granite Setts (to parking bays)
- P4** Paving Type 4 Exposed Aggregate Concrete path
- P5** Paving Type 5 Precast paving for traffic areas
- P6** Paving Type 6 Brick Paving
- PIT** Proposed Service Pits
- RW1** Brick base with a Timber capping Retaining wall
- RW2** Brick base with a Precast concrete capping Retaining wall
- RW3** In situ concrete Retaining wall
- RW4** Heritage Interpretation wall
- ST1** Corten Steel Edging
- TD1** Timber Bench Seats
- TD2** Timber Composite vertical batten screen
- TD3** Timber Decking

01 24/10/2014 ISSUED FOR SSDA APPROVAL FJMT

REV.	DATE	DESCRIPTION	BY
------	------	-------------	----

CLIENT

FRASERS BROADWAY

Suite 11, Lumiere Commercial,
Level 12, 101 Bathurst Street,
Sydney, NSW, 2000, Australia

ARCHITECT

fjmt

francis-jones morehen thorp

NONNATED ARCHITECT RICHARD FRANCIS-JONES (REG NO 5301)

SYDNEY

Level 5, 70 King Street
Sydney NSW 2000 Australia
T +61 2 9251 7077
F +61 2 9251 7072
E fjmt@fjmt.com.au
W www.fjmt.com.au

PROJECT

Central Park Block 11
O'Connor Street, Chippendale
Sydney
Fraser's Broadway

TITLE

ENVIRONMENTAL ANALYSIS
Apartment Solar Access Analysis - July 21

SCALE	DRAWN	FJMT	PROJECT CODE
DATE	24/10/2014	APPROVED	SB
SHEET NO.	SSDA-11-709	REVISION	01

Issued for Approval