

29 October 2015

MEMORANDUM

Client: St. Catherine's School, Waverley
Project: Staged Campus Master Plan + Stage 1 (RPAC)
Site Address: 26 Albion Street, Waverley, New South Wales
Attention: **Ms. Megan Fu**
Contact Officer
NSW Department of Planning and Environment

Sandrick Pty Ltd
ABN 99 093 585 623
Suite 412 Nexus Norwest
4 Columbia Court
Norwest Business Park
Baulkham Hills NSW 2153

Telephone: 02 8860 9494
Facsimile: 02 8860 9490

P.O. Box 8232
Baulkham Hills Business Centre
Baulkham Hills NSW 2153

Subject: **Response to Email dated 30 Sep. 2015 RE: SCS - Assessment**

Attachments: 1. Nil

1. INTRODUCTION

The response to technical submissions received following the 14 day notification period (6 July to 20 July, 2015) was formally lodged to the NSW Department of Planning and Environment (**NSW DP&E**) on 24 September, 2015.

Subsequent to the formal response, Ms. Megan Fu (Senior Planner and Contact Officer at the NSW DP&E) requested additional results from the travel survey prepared by Arup and distributed by St. Catherine's School in May, 2015. Specifically, results for the following questions were requested:

- Student survey:
 - Q5, Q6, Q8, Q10, Q15 to Q18 (inclusive)
- Staff survey:
 - Q7, Q8, Q11, Q12, Q18 and Q19

These results have been extrapolated from the raw survey data sheets and presented in column graph form in the succeeding sections of this information memorandum.



2. TRAVEL SURVEY RESULTS

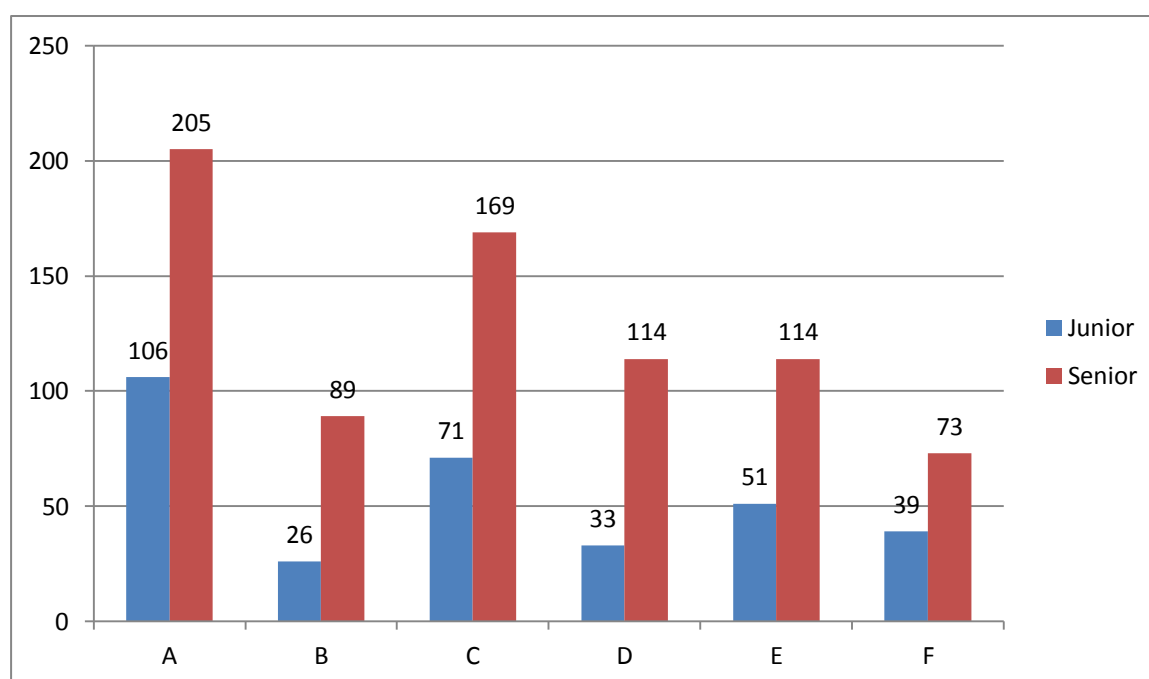
2.1 Student Survey

Question 5

Please indicate any days that you start school before 7:30am for extra-curricular activities?

Possible Responses:

Description	Junior	Senior
A I don't attend extracurricular activities before school	106	205
B Monday	26	89
C Tuesday	71	169
D Wednesday	33	114
E Thursday	51	114
F Friday	39	73

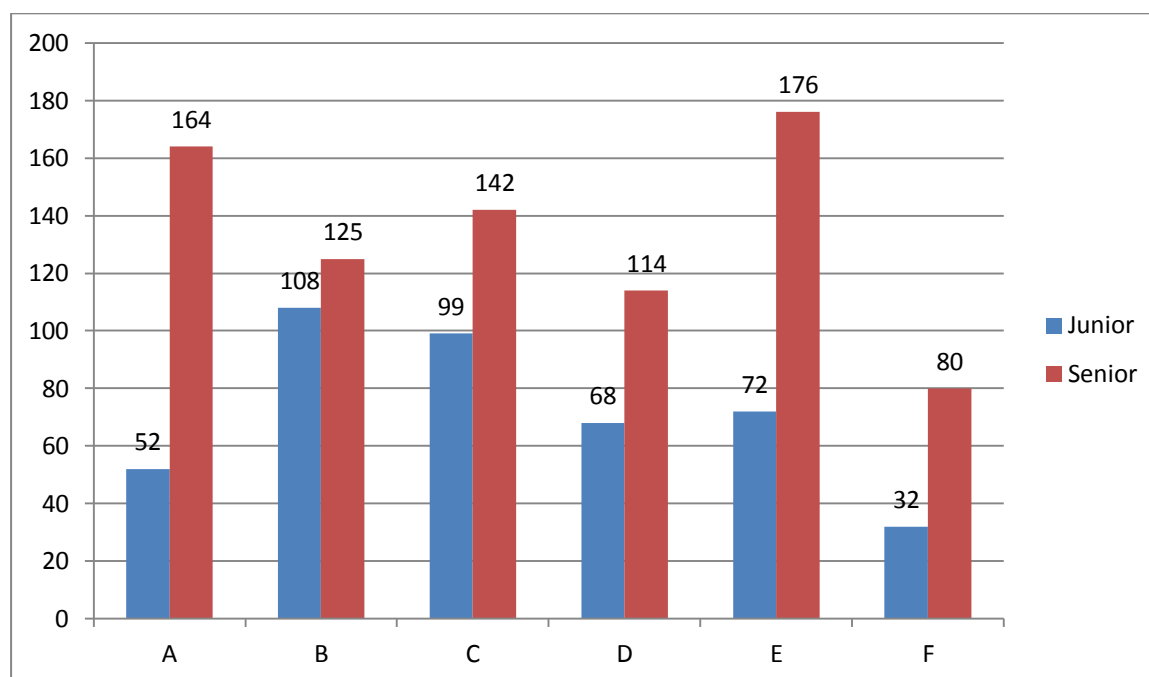


Question 6

Please indicate any days that you finish school after 4:00pm for extra-curricular activities?

Possible Responses:

Description	Junior	Senior
A I don't attend extracurricular activities after school	52	164
B Monday	108	125
C Tuesday	99	142
D Wednesday	68	114
E Thursday	72	176
F Friday	32	80

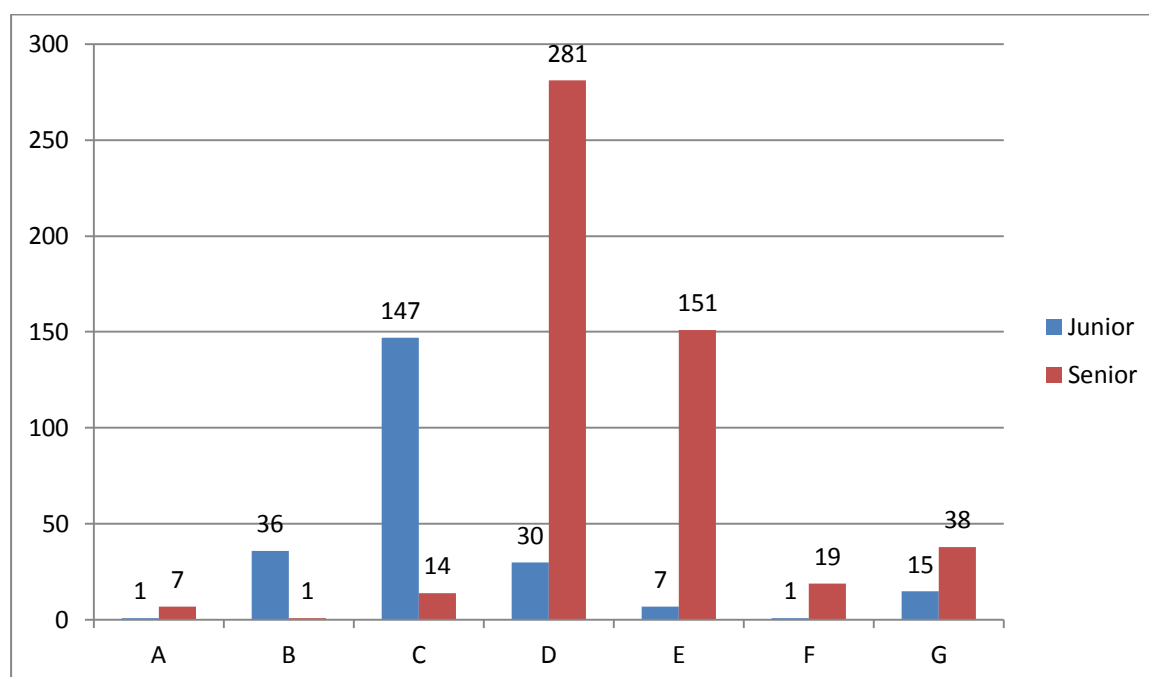


Question 8

What time do you usually depart from school (if not attending extra-curricular activities)?

Possible Responses:

Description	Junior	Senior
A Before 2:45pm	1	7
B 2:45-3:00pm	36	1
C 3:00-3:15pm	147	14
D 3:15-3:30pm	30	281
E 3:30pm-3:45pm	7	151
F 3:45pm 4:00pm	1	19
G After 4:00pm	15	38

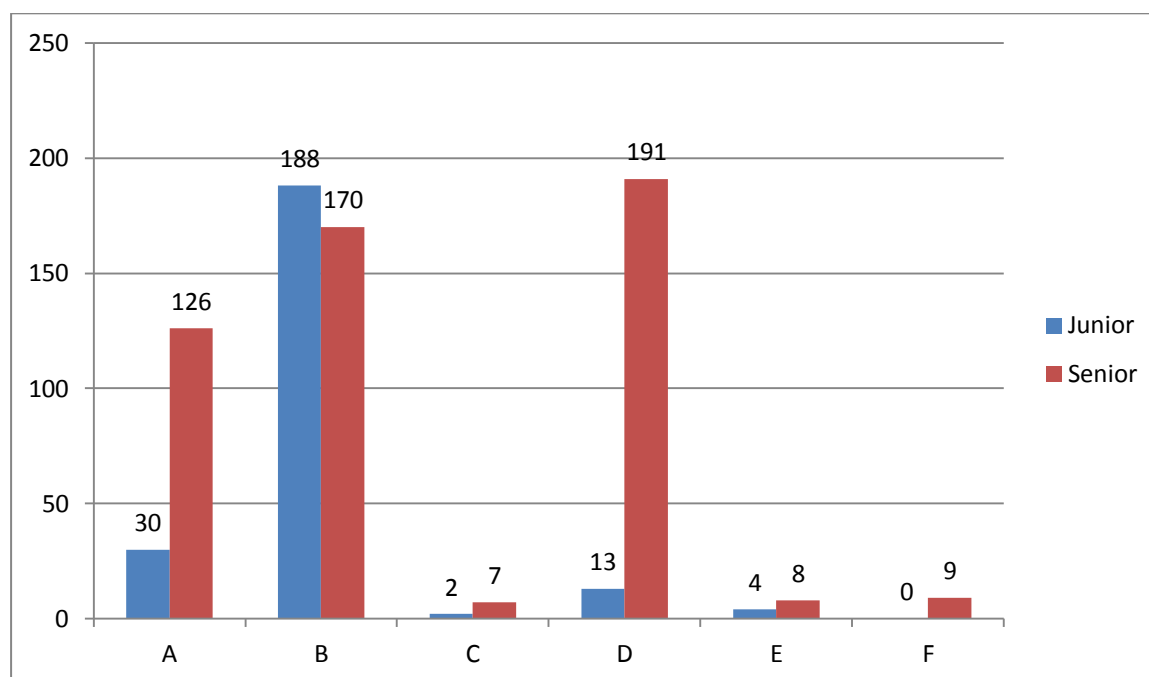


Question 10

On a typical day, how do you currently travel home from school?

Possible Responses:

Description	Junior	Senior
A Walk only (from school to home)	30	126
B Private vehicle (car drop-off)	188	170
C The St. Catherine's School bus (minibus)	2	7
D Public transport (public bus and/or train)	13	191
E Car-pool (ride-share with other St Catherine's School students)	4	8
F Other (please specify)	0	9



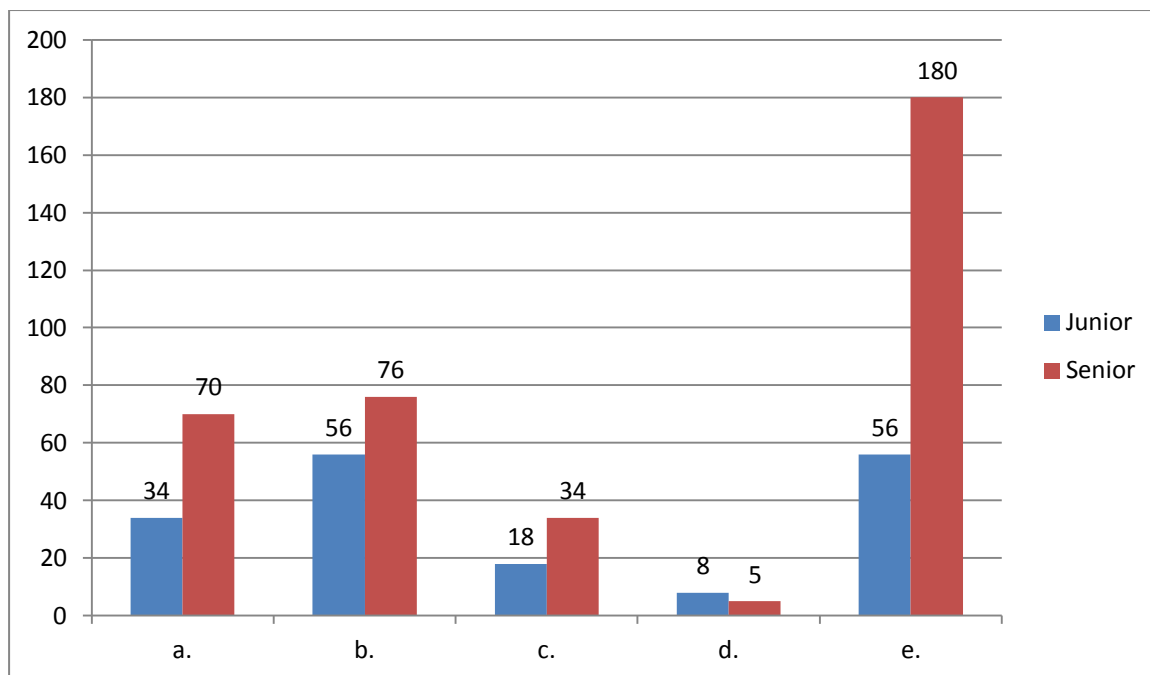
Question 15

What would encourage you to use the School's minibus service to and from school each day?

Responses:

A. Open-Ended Response

- a. Better affordability
- b. Accessibility (current routes does not pass by my place of residence)
- c. Travelling with peers
- d. Awareness (unaware of the existence of the current service)
- e. Other miscellaneous responses



While no specific options were provided (open-ended response), the above chart attempts to categorise the most common responses received.

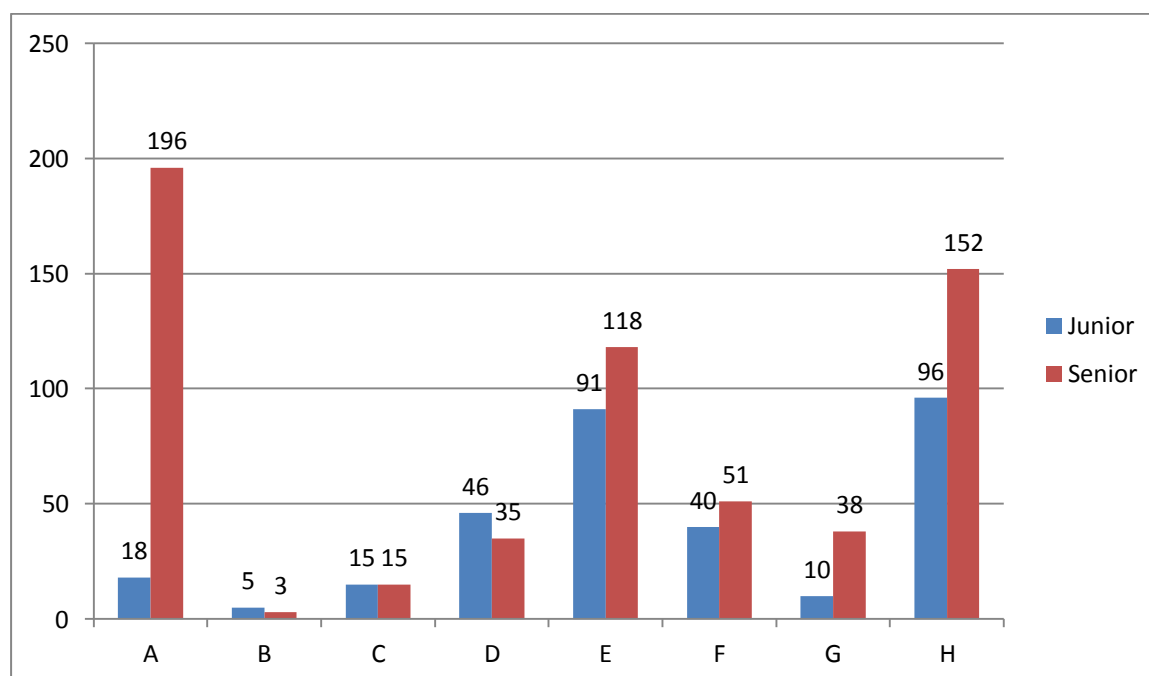


Questions 16

If you don't currently use public transport to school, could you please provide details as to why you don't use it?

Possible Responses:

Description	Junior	Senior
A I currently travel to and from school by public transport	18	196
B Public transport is too expensive	5	3
C There are no services near my house	15	15
D There is no direct service from my house to school	46	35
E My parent/guardian takes me to school on the way to/from work	91	118
F I have extracurricular activities before/after school most days	40	51
G Services are too infrequent	10	38
H Other (please specify)	96	152



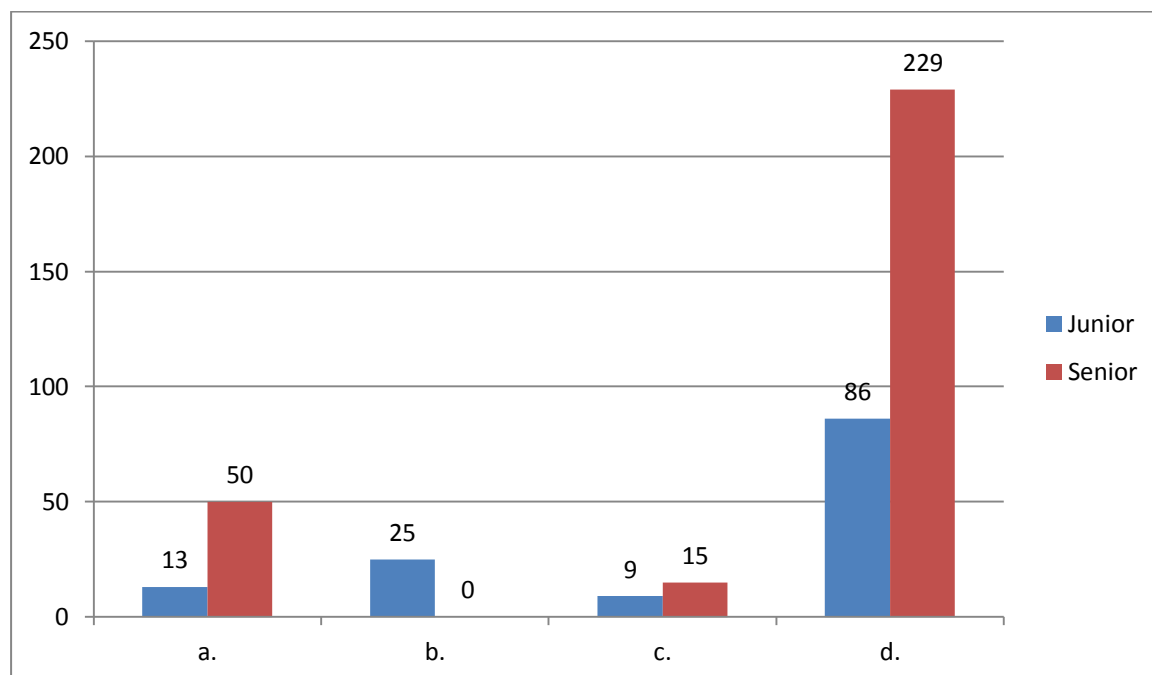
Question 17

What would encourage you to take public transport to and from school each day?

Responses:

A. Open-Ended Response

- a. More direct service, more frequent services or dedicated St. Catherine's School service
- b. Age (currently too young)
- c. Travelling with peers
- d. Other miscellaneous responses



While no specific options were provided (open-ended response), the above chart attempts to categorise the most common responses received. In this instance, a large number of “Other” responses were due to St. Catherine's School students either already utilising public bus services or walking due to the proximity of their residence to the School.

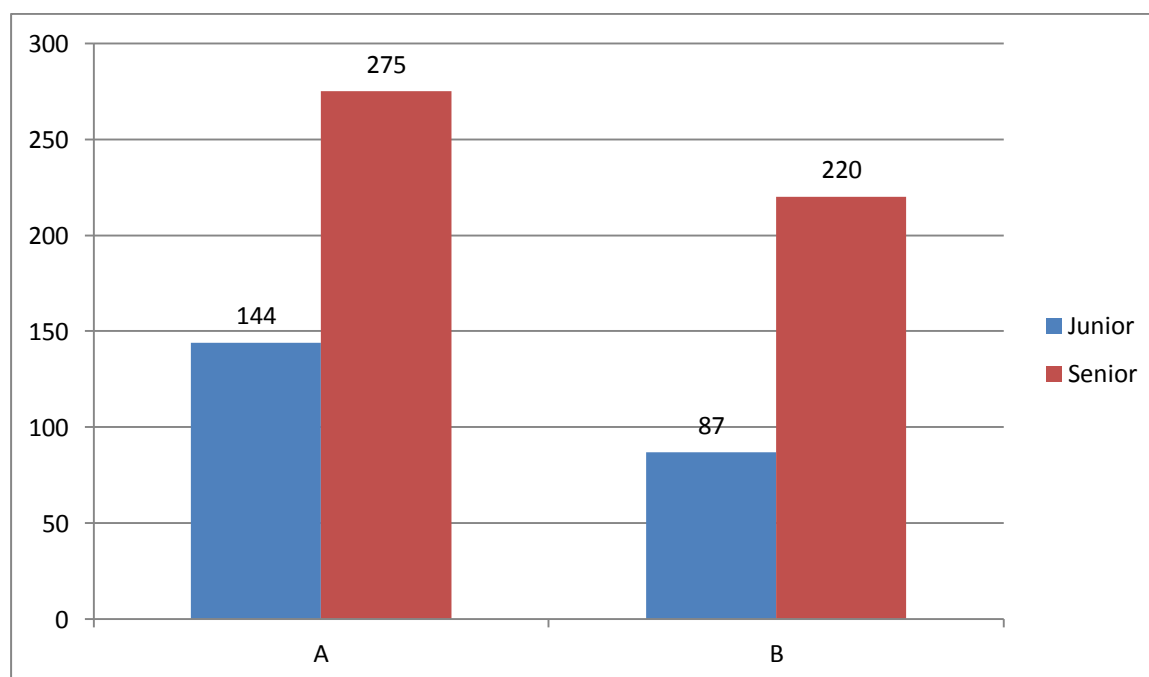


Question 18

Would you consider participating in a carpooling scheme with other students who also attend St Catherine's School?

Possible Responses:

Description	Junior	Senior
A Yes	144	275
B No	87	220

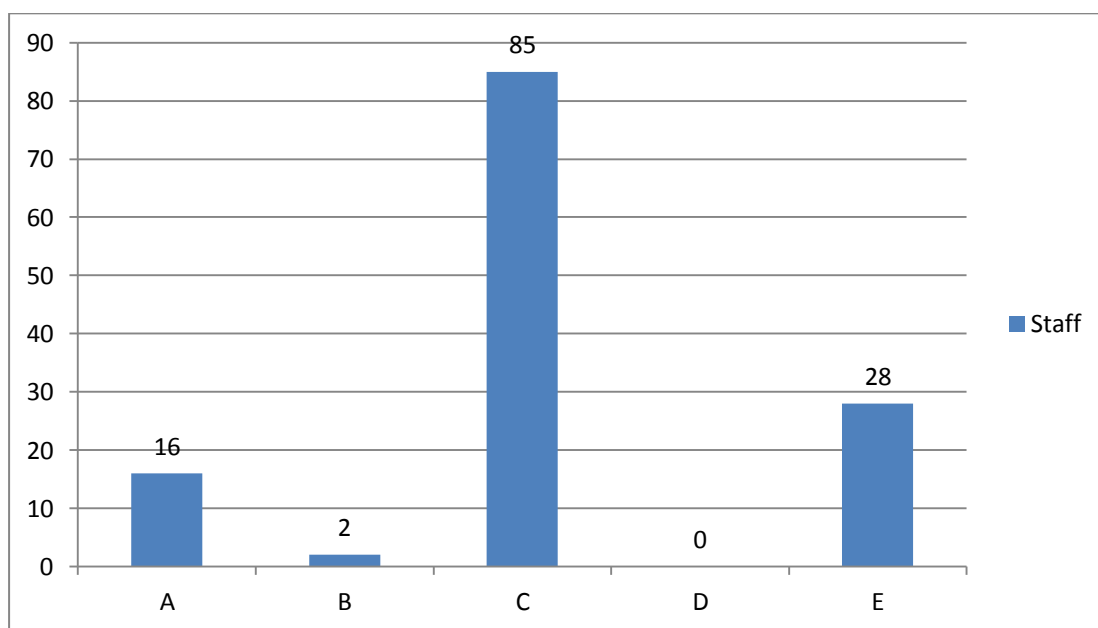


2.2 Staff Survey**Question 7**

If you don't currently walk to work, could you please provide details as to why you don't walk?

Possible Responses:

Description	Staff
A Bag is too heavy/I have too many bags	16
B Walking route isn't safe	2
C It is too far to walk	85
D A family member/partner/friend/colleague drops me off or picks me up	0
E Other	28



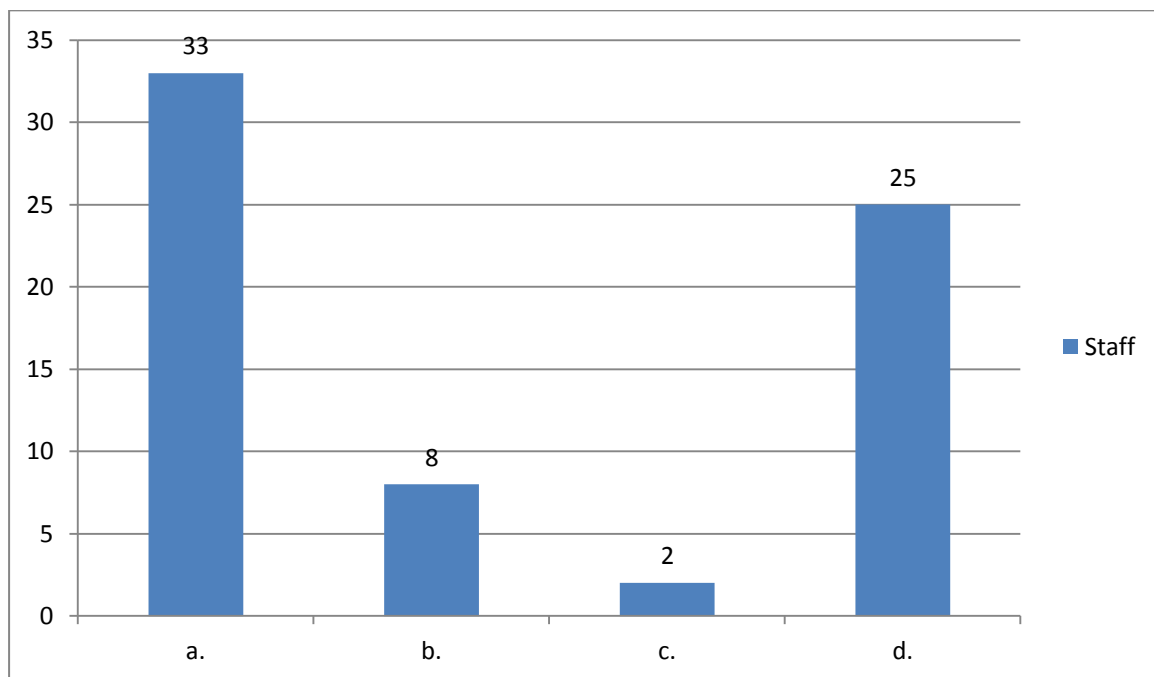
Question 8

What would encourage you to walk to and from work each day?

Responses:

A. Open-Ended Response

- a. It is currently too far to walk
- b. I currently have before and/or after work commitments
- c. I have too many things to carry to and from work
- d. Other miscellaneous responses



While no specific options were provided (open-ended response), the above chart attempts to categorise the most common responses received.



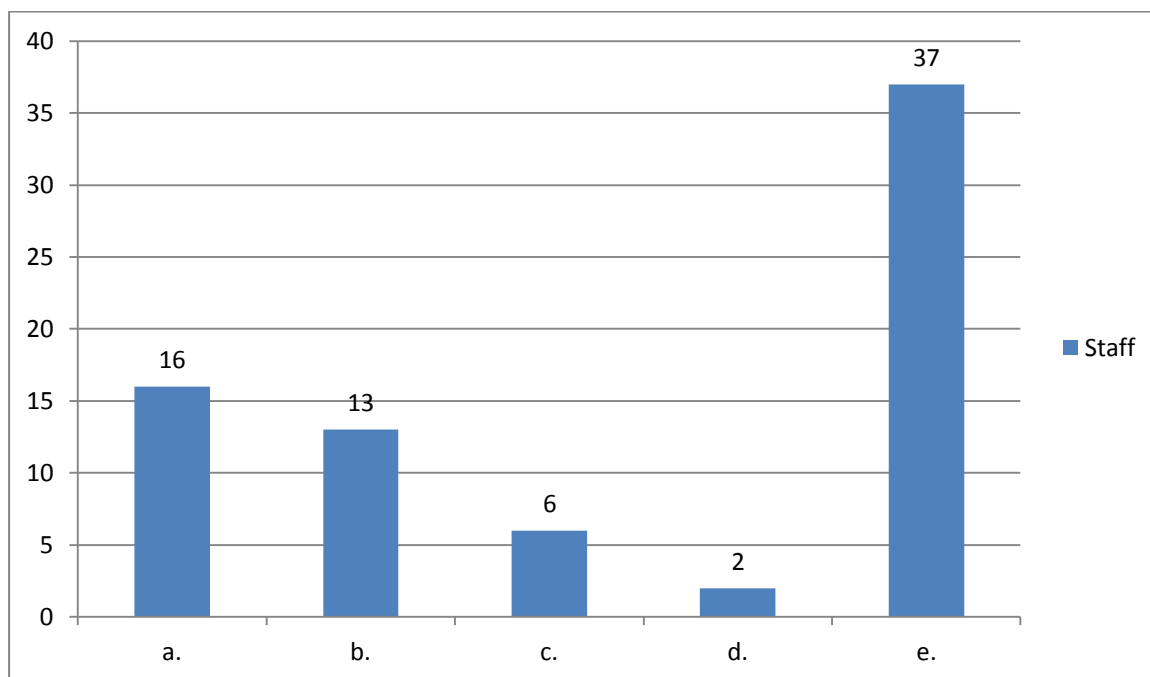
Question 11

What would encourage you to cycle/walk to work each day?

Responses:

A. Open-Ended Response

- a. It is currently too far to walk
- b. Provision of additional end-of-trip facilities (e.g. showers, lockers etc.)
- c. I currently have before and/or after work commitments
- d. I have too many things to carry to and from work
- e. Other miscellaneous responses



While no specific options were provided (open-ended response), the above chart attempts to categorise the most common responses received.

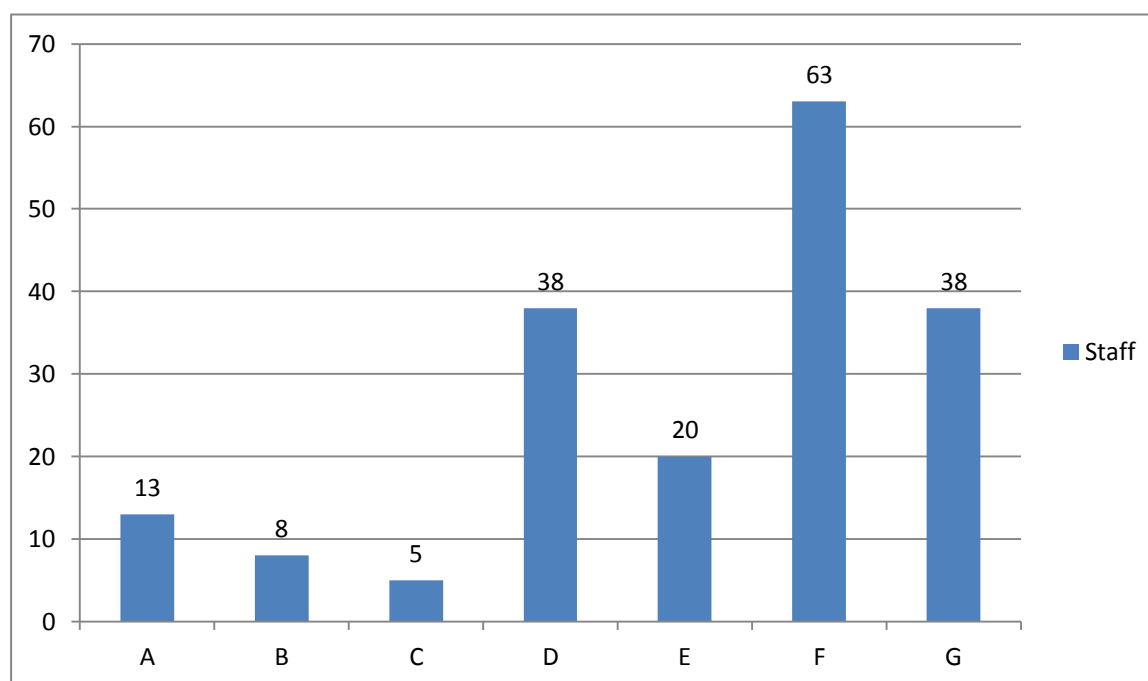


Question 12

If you don't currently use public transport to school, could you please provide details as to why you don't use it?

Possible Responses:

Description	Staff
A I currently travel to and from school by public transport	13
B Public transport is too expensive	8
C There are no services near my house	5
D There is no direct service from my house	38
E Services are too infrequent	20
F Driving is quicker	63
G Other (please specify)	38



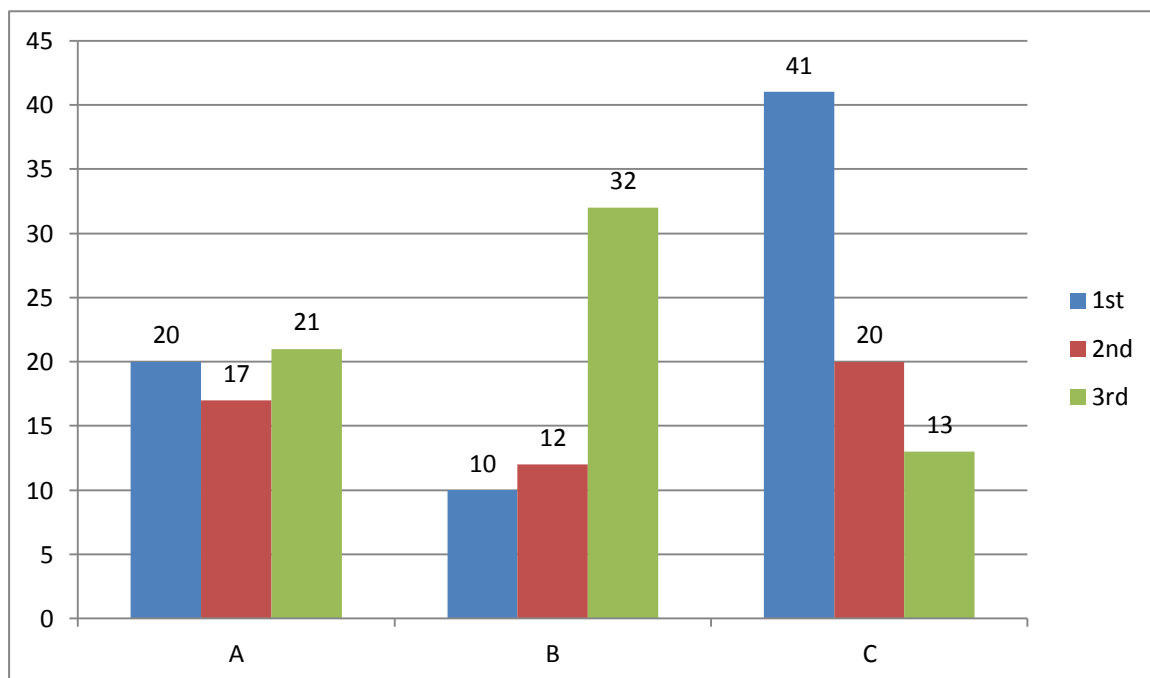
Question 18

St Catherine' School would like to know what would encourage you to consider alternative modes of travel away from the use of private vehicles (Please rank the same way as per previous question)

Possible Responses:

- A. Improved walking/cycling facilities
- B. Secure cycle/motorcycle car-park
- C. On-site Parking for car-pool users

Staff members that do not typically rely on private vehicles as a primary mode of travel were also given the option to select N/A (I don't travel by private vehicle).



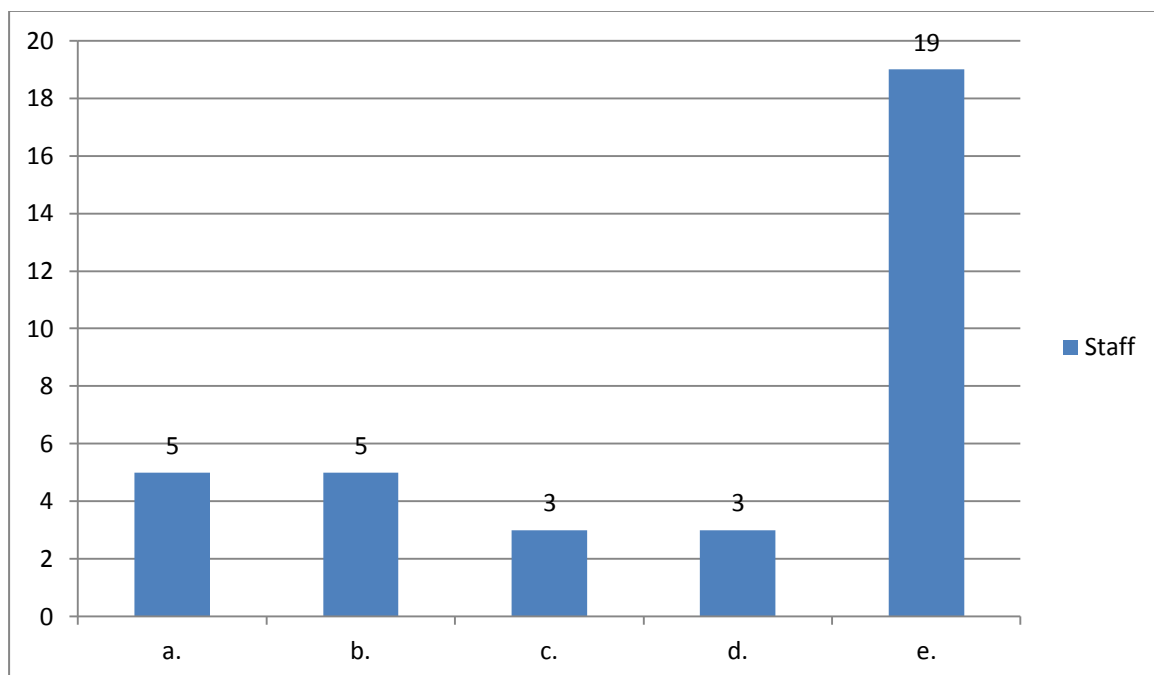
Question 19

Some suggestions have been provided above, however we would love to hear some of your own, please feel free to write some further suggestions.

Responses:

A. Open-Ended Response

- a. Review how on-site parking spaces are offered to staff (e.g. to favour staff that car pool or travel from extended distances etc.)
- b. Provision of a private bus service for staff
- c. Increased flexibility in working hours
- d. Cycling program and/or provision of end-of-trip facilities
- e. Other miscellaneous responses



While no specific options were provided (open-ended response), the above chart attempts to categorise the most common responses received.

