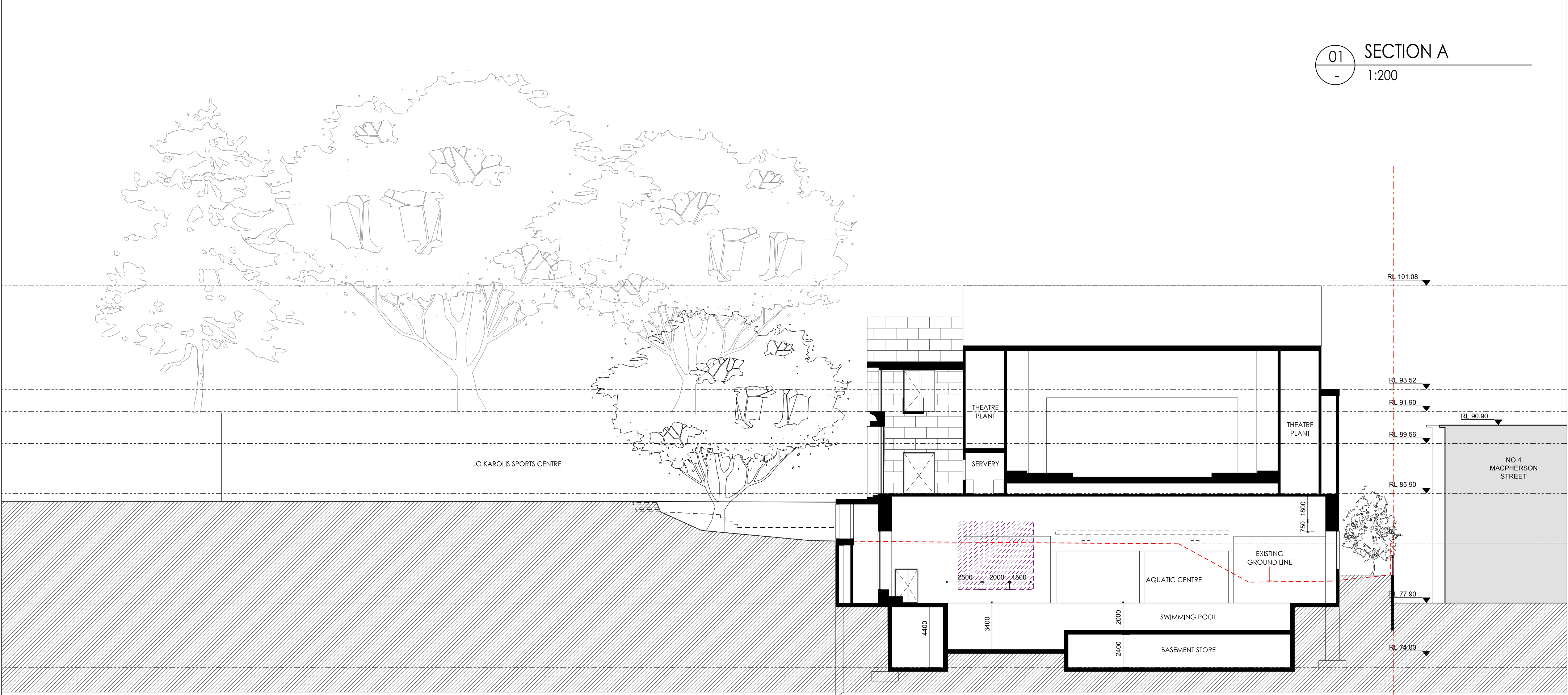
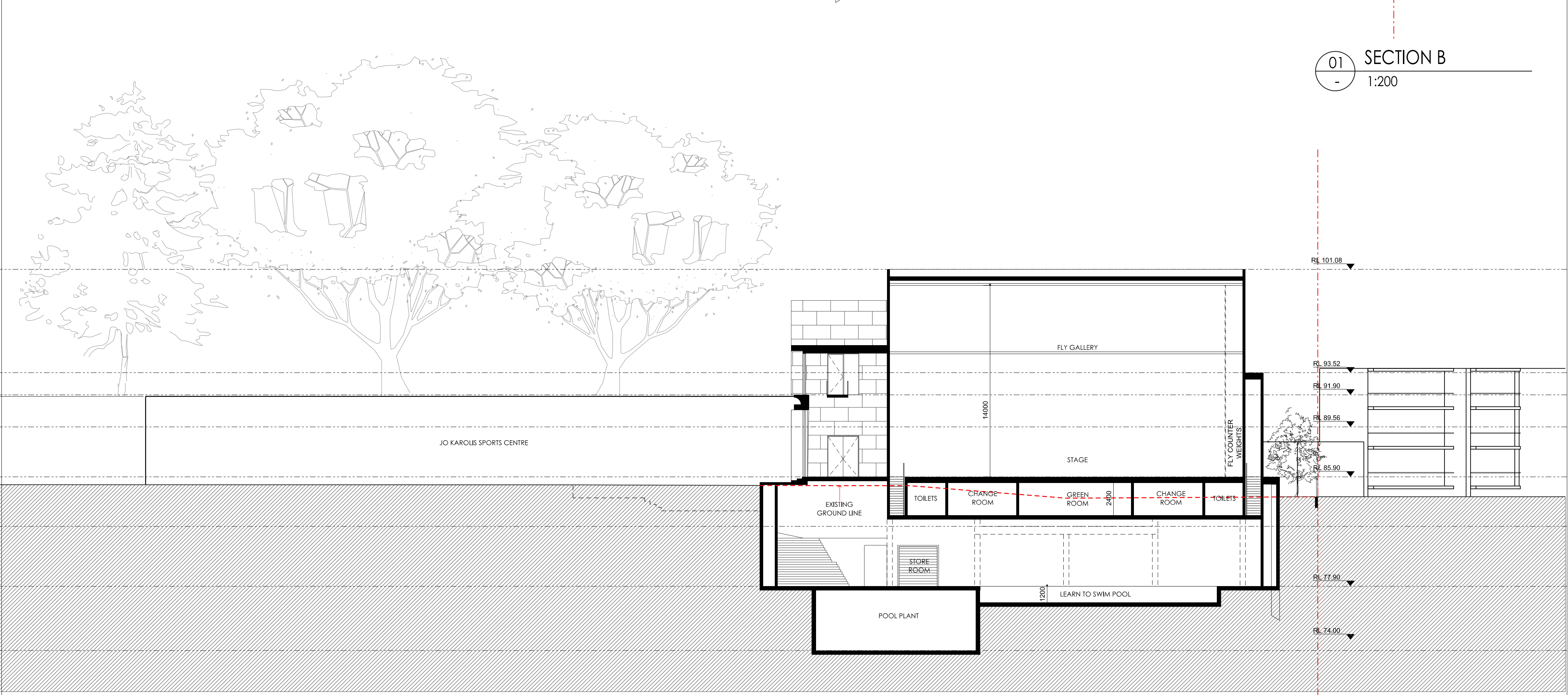


01 SECTION A
- 1:200



01 SECTION B
- 1:200



01 SECTION C
- 1:200

			Architect		Client		Drawing Title		Scale: 1:200 @ A1 Job No: 1212	
			PD MAYOH PTY LTD ABN 16788096806 Peter Mayoh, Regd. Architect No 3788 Arthur Gartrell, Regd. Architect No 4040 60 Strathallen Avenue Northbridge NSW 2063 P (02) 9558 0485 F (02) 9558 6424 info@pdmayoh.com.au www.mayoharchitects.com.au		ST. CATHERINE'S SCHOOL		SECTIONS A, B & C		Checked: PDM,JA Drawn: SS	
			Project		RPAC Project				Dwg No. A.160 Issue SK6	
			St. Catherine's School 26 Albion Street, Waverley NSW							
SK6	Pre-Lodgement Consultation with Waverley Council	12.11.13								
SK5	Preliminary Issue to Consultants	01.10.13								
SK4	Preliminary Issue	13.9.13								
SK3	Preliminary Issue	6.9.13								
Issue	Amendment Description	Date								