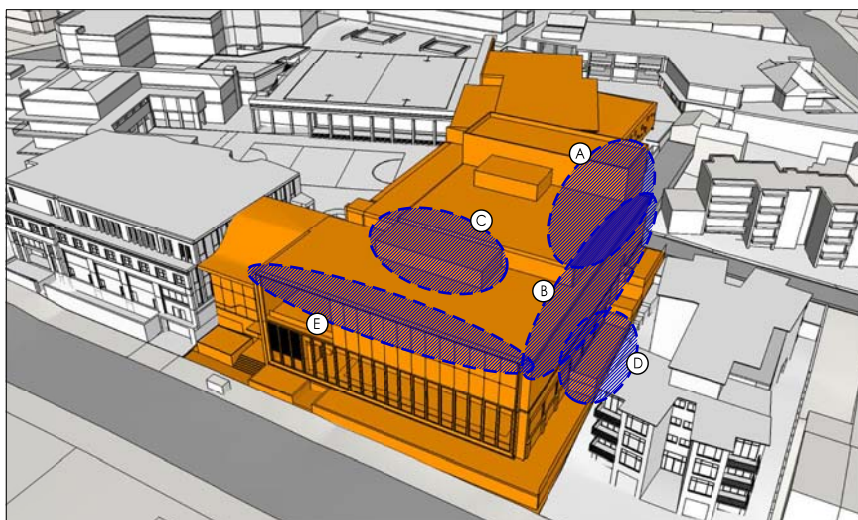
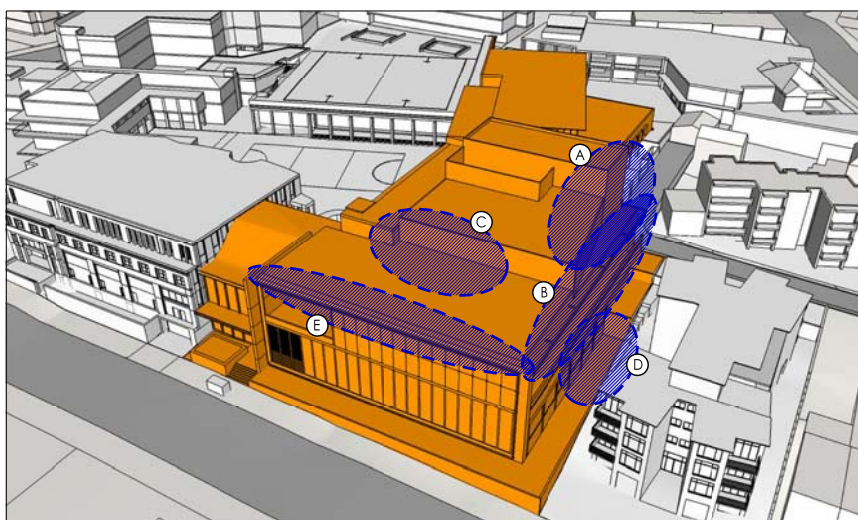


1. Diagram of Competition Scheme (September 2012).



2. Request for DGR's / Community Consultation scheme (November-December 2013)

- A. Fly System counterweights moved to off prompt side to allow for tapering back of building bulk on Eastern side.
- B. Egress passage along Eastern boundary is now external rather than internal to reduce building bulk + impact on immediate neighbours. "Green Screen" added to maximise landscape amenity on Eastern elevation.
- C. Plant proposed to go on the roof of MultiPurpose Hall has been relocated to inside the building envelope to reduce shadow & noise impacts on surrounding residents.
- D. Planter level lowered to maximise landscape area at similar level to neighbouring property.
- E. Overall height of MultiPurpose Hall roof lowered by 0.66 m.



3. Diagram of proposed Development Application scheme (July 2014).