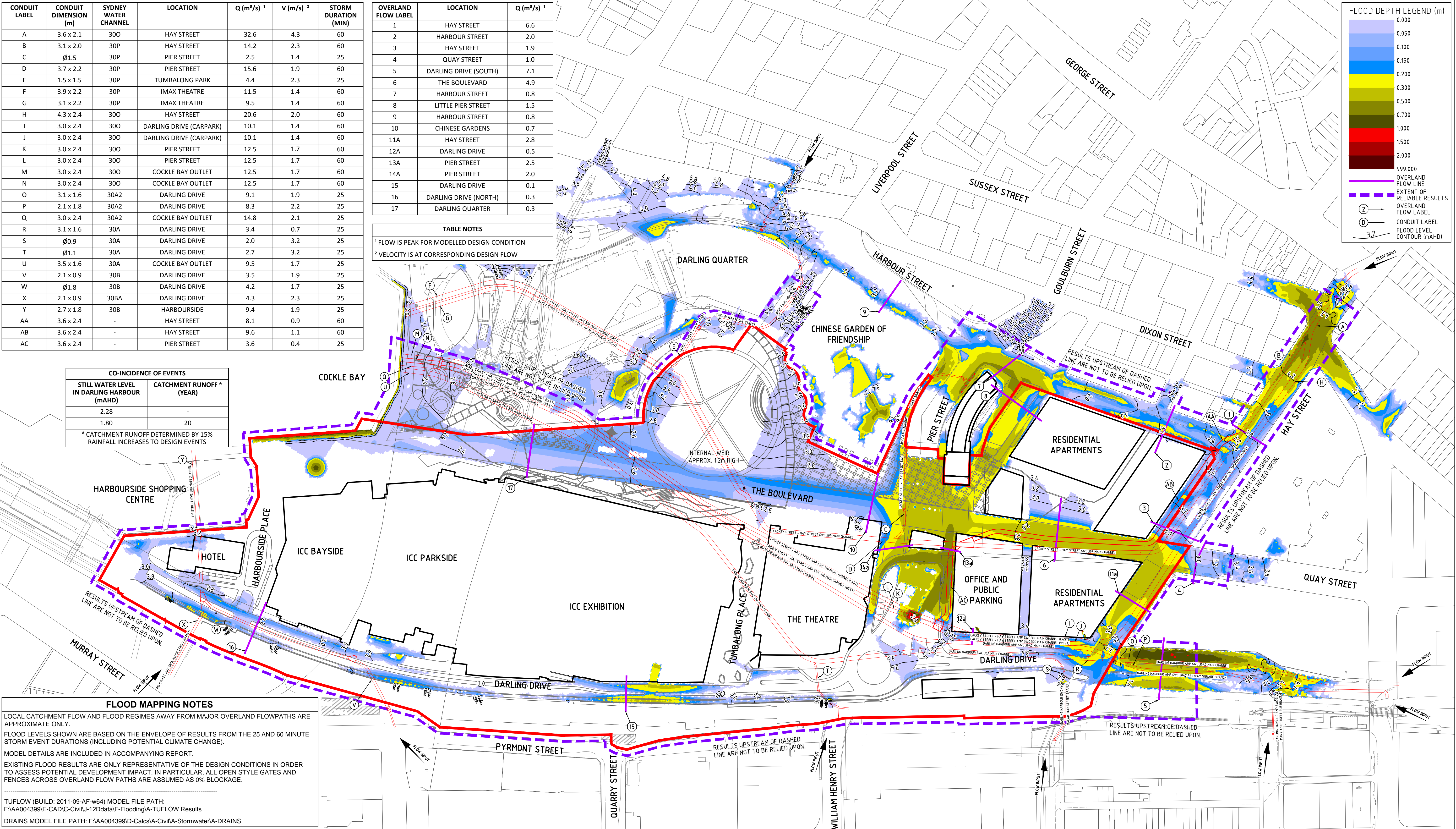


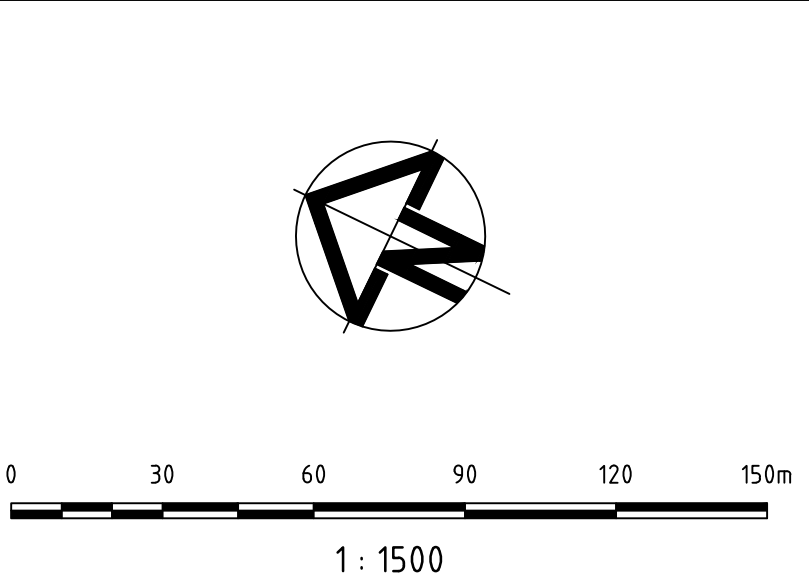
CONDUIT LABEL	CONDUIT DIMENSION (m)	SYDNEY WATER CHANNEL	LOCATION	Q (m³/s) <sup>1</sup>	V (m/s) <sup>2</sup>	STORM DURATION (MIN)
A	3.6 x 2.1	300	HAY STREET	32.6	4.3	60
B	3.1 x 2.0	30P	HAY STREET	14.2	2.3	60
C	Ø1.5	30P	PIER STREET	2.5	1.4	25
D	3.7 x 2.2	30P	PIER STREET	15.6	1.9	60
E	1.5 x 1.5	30P	TUMBALONG PARK	4.4	2.3	25
F	3.9 x 2.2	30P	IMAX THEATRE	11.5	1.4	60
G	3.1 x 2.2	30P	IMAX THEATRE	9.5	1.4	60
H	4.3 x 2.4	300	HAY STREET	20.6	2.0	60
I	3.0 x 2.4	300	DARLING DRIVE (CARPARK)	10.1	1.4	60
J	3.0 x 2.4	300	DARLING DRIVE (CARPARK)	10.1	1.4	60
K	3.0 x 2.4	300	PIER STREET	12.5	1.7	60
L	3.0 x 2.4	300	PIER STREET	12.5	1.7	60
M	3.0 x 2.4	300	COCKLE BAY OUTLET	12.5	1.7	60
N	3.0 x 2.4	300	COCKLE BAY OUTLET	12.5	1.7	60
O	3.1 x 1.6	30A2	DARLING DRIVE	9.1	1.9	25
P	2.1 x 1.8	30A2	DARLING DRIVE	8.3	2.2	25
Q	3.0 x 2.4	30A2	COCKLE BAY OUTLET	14.8	2.1	25
R	3.1 x 1.6	30A	DARLING DRIVE	3.4	0.7	25
S	Ø0.9	30A	DARLING DRIVE	2.0	3.2	25
T	Ø1.1	30A	DARLING DRIVE	2.7	3.2	25
U	3.5 x 1.6	30A	COCKLE BAY OUTLET	9.5	1.7	25
V	2.1 x 0.9	30B	DARLING DRIVE	3.5	1.9	25
W	Ø1.8	30B	DARLING DRIVE	4.2	1.7	25
X	2.1 x 0.9	30BA	DARLING DRIVE	4.3	2.3	25
Y	2.7 x 1.8	30B	HARBOURSIDE	9.4	1.9	25
AA	3.6 x 2.4	-	HAY STREET	8.1	0.9	60
AB	3.6 x 2.4	-	HAY STREET	9.6	1.1	60
AC	3.6 x 2.4	-	PIER STREET	3.6	0.4	25

OVERLAND FLOW LABEL	LOCATION	Q (m³/s) <sup>1</sup>
1	HAY STREET	6.6
2	HARBOUR STREET	2.0
3	HAY STREET	1.9
4	QUAY STREET	1.0
5	DARLING DRIVE (SOUTH)	7.1
6	THE BOULEVARD	4.9
7	HARBOUR STREET	0.8
8	LITTLE PIER STREET	1.5
9	HARBOUR STREET	0.8
10	CHINESE GARDENS	0.7
11A	HAY STREET	2.8
12A	DARLING DRIVE	0.5
13A	PIER STREET	2.5
14A	PIER STREET	2.0
15	DARLING DRIVE	0.1
16	DARLING DRIVE (NORTH)	0.3
17	DARLING QUARTER	0.3

TABLE NOTES
<sup>1</sup> FLOW IS PEAK FOR MODELLED DESIGN CONDITION
<sup>2</sup> VELOCITY IS AT CORRESPONDING DESIGN FLOW



DARLING HARBOUR LIVE



- NOTES:
- ALL DIMENSIONS IN METRES UNLESS NOTED OTHERWISE.
  - ALL COORDINATES TO MGA. ALL LEVELS TO AHD.
  - THIS DRAWING MUST BE READ IN CONJUNCTION WITH ALL RELEVANT CONTRACTS, SPECIFICATIONS AND DRAWINGS.
  - PRECINCT BOUNDARIES ARE INDICATIVE ONLY AND ARE SUBJECT TO CHANGE.

REV	DESCRIPTION	DATE
01	ISSUE FOR DEVELOPMENT APPLICATION	11/03/2013

CLIENT



PROJECT MANAGEMENT & CONSTRUCTION  
LEVEL 4, THE BOND, 30 HICKSON RD MILLERS POINT, NSW 2000

CIVIL / TRAFFIC / FACADES  
**HYDER CONSULTING PTY LTD**  
ABN 76 104 485 289  
LEVEL 5, 141 WALKER ST,  
NORTH SYDNEY NSW 2060  
AUSTRALIA  
Tel: +61 (0)2 8907 9000  
Fax: +61 (0)2 8907 9001  
www.hyderconsulting.com  
© Copyright reserved



PROJECT  
**SICEEP  
DARLING HARBOUR  
PROJECT PRECINCT**

DRAWING TITLE  
**20 YEAR ARI  
PROPOSED DEVELOPMENT  
FLOOD DEPTH AND LEVEL CONTOURS  
INCLUDING POTENTIAL CLIMATE CHANGE**

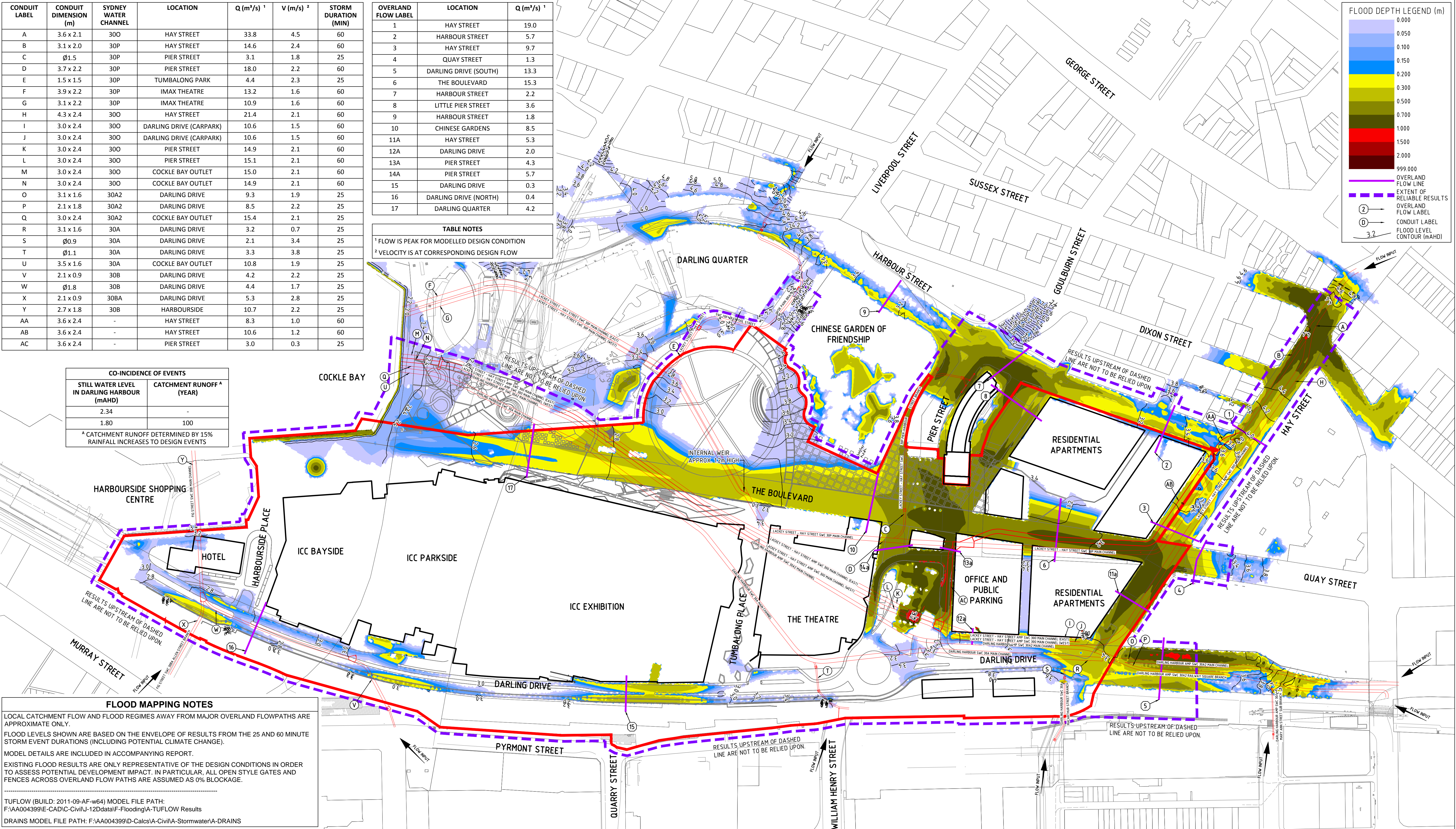
SCALE @ A1	DRAWN	DESIGNED	REVIEWED	APPROVED
1:1500	RD	CM	BC	JH
PROJECT NUMBER AA004399	DRAWING NUMBER WP-FL-0132	REV 01		



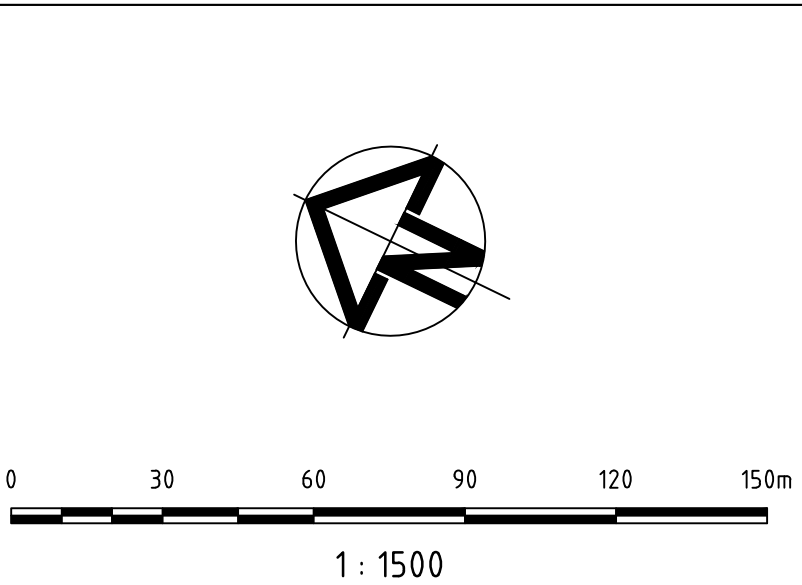
CONDUIT LABEL	CONDUIT DIMENSION (m)	SYDNEY WATER CHANNEL	LOCATION	Q (m³/s) <sup>1</sup>	V (m/s) <sup>2</sup>	STORM DURATION (MIN)
A	3.6 x 2.1	300	HAY STREET	33.8	4.5	60
B	3.1 x 2.0	30P	HAY STREET	14.6	2.4	60
C	Ø1.5	30P	PIER STREET	3.1	1.8	25
D	3.7 x 2.2	30P	PIER STREET	18.0	2.2	60
E	1.5 x 1.5	30P	TUMBALONG PARK	4.4	2.3	25
F	3.9 x 2.2	30P	IMAX THEATRE	13.2	1.6	60
G	3.1 x 2.2	30P	IMAX THEATRE	10.9	1.6	60
H	4.3 x 2.4	300	HAY STREET	21.4	2.1	60
I	3.0 x 2.4	300	DARLING DRIVE (CARPARK)	10.6	1.5	60
J	3.0 x 2.4	300	DARLING DRIVE (CARPARK)	10.6	1.5	60
K	3.0 x 2.4	300	PIER STREET	14.9	2.1	60
L	3.0 x 2.4	300	PIER STREET	15.1	2.1	60
M	3.0 x 2.4	300	COCKLE BAY OUTLET	15.0	2.1	60
N	3.0 x 2.4	300	COCKLE BAY OUTLET	14.9	2.1	60
O	3.1 x 1.6	30A2	DARLING DRIVE	9.3	1.9	25
P	2.1 x 1.8	30A2	DARLING DRIVE	8.5	2.2	25
Q	3.0 x 2.4	30A2	COCKLE BAY OUTLET	15.4	2.1	25
R	3.1 x 1.6	30A	DARLING DRIVE	3.2	0.7	25
S	Ø0.9	30A	DARLING DRIVE	2.1	3.4	25
T	Ø1.1	30A	DARLING DRIVE	3.3	3.8	25
U	3.5 x 1.6	30A	COCKLE BAY OUTLET	10.8	1.9	25
V	2.1 x 0.9	30B	DARLING DRIVE	4.2	2.2	25
W	Ø1.8	30B	DARLING DRIVE	4.4	1.7	25
X	2.1 x 0.9	30BA	DARLING DRIVE	5.3	2.8	25
Y	2.7 x 1.8	30B	HARBOURSIDE	10.7	2.2	25
AA	3.6 x 2.4	-	HAY STREET	8.3	1.0	60
AB	3.6 x 2.4	-	HAY STREET	10.6	1.2	60
AC	3.6 x 2.4	-	PIER STREET	3.0	0.3	25

OVERLAND FLOW LABEL	LOCATION	Q (m³/s) <sup>1</sup>
1	HAY STREET	19.0
2	HARBOUR STREET	5.7
3	HAY STREET	9.7
4	QUAY STREET	1.3
5	DARLING DRIVE (SOUTH)	13.3
6	THE BOULEVARD	15.3
7	HARBOUR STREET	2.2
8	LITTLE PIER STREET	3.6
9	HARBOUR STREET	1.8
10	CHINESE GARDENS	8.5
11A	HAY STREET	5.3
12A	DARLING DRIVE	2.0
13A	PIER STREET	4.3
14A	PIER STREET	5.7
15	DARLING DRIVE	0.3
16	DARLING DRIVE (NORTH)	0.4
17	DARLING QUARTER	4.2

TABLE NOTES
<sup>1</sup> FLOW IS PEAK FOR MODELLED DESIGN CONDITION
<sup>2</sup> VELOCITY IS AT CORRESPONDING DESIGN FLOW



DARLING HARBOUR LIVE



NOTES:

- ALL DIMENSIONS IN METRES UNLESS NOTED OTHERWISE.
- ALL COORDINATES TO MGA. ALL LEVELS TO AHD.
- THIS DRAWING MUST BE READ IN CONJUNCTION WITH ALL RELEVANT CONTRACTS, SPECIFICATIONS AND DRAWINGS.
- PRECINCT BOUNDARIES ARE INDICATIVE ONLY AND ARE SUBJECT TO CHANGE.

REV	DESCRIPTION	DATE
01	ISSUE FOR DEVELOPMENT APPLICATION	11/03/2013

CLIENT



PROJECT MANAGEMENT & CONSTRUCTION  
LEVEL 4, THE BOND, 30 HICKSON RD MILLERS POINT, NSW 2000

CIVIL / TRAFFIC / FACADES  
**HYDER CONSULTING PTY LTD**  
ABN 76 104 485 289  
LEVEL 5, 141 WALKER ST,  
NORTH SYDNEY NSW 2060  
AUSTRALIA  
Tel: +61 (0)2 8907 9000  
Fax: +61 (0)2 8907 9001  
www.hyderconsulting.com  
© Copyright reserved



PROJECT  
**SICEEP**  
**DARLING HARBOUR**  
**PROJECT PRECINCT**

DRAWING TITLE  
**100 YEAR ARI**  
**PROPOSED DEVELOPMENT**  
**FLOOD DEPTH AND LEVEL CONTOURS**  
**INCLUDING POTENTIAL CLIMATE CHANGE**

STATUS	SCALE @ A1	DRAWN	DESIGNED	REVIEWED	APPROVED
PRELIMINARY ONLY	1:1500	RD	CM	BC	JH
PROJECT NUMBER	DRAWING NUMBER	REV			
AA004399	WP-FL-0133	01			